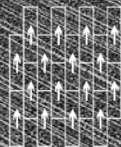
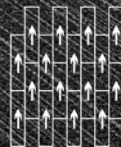
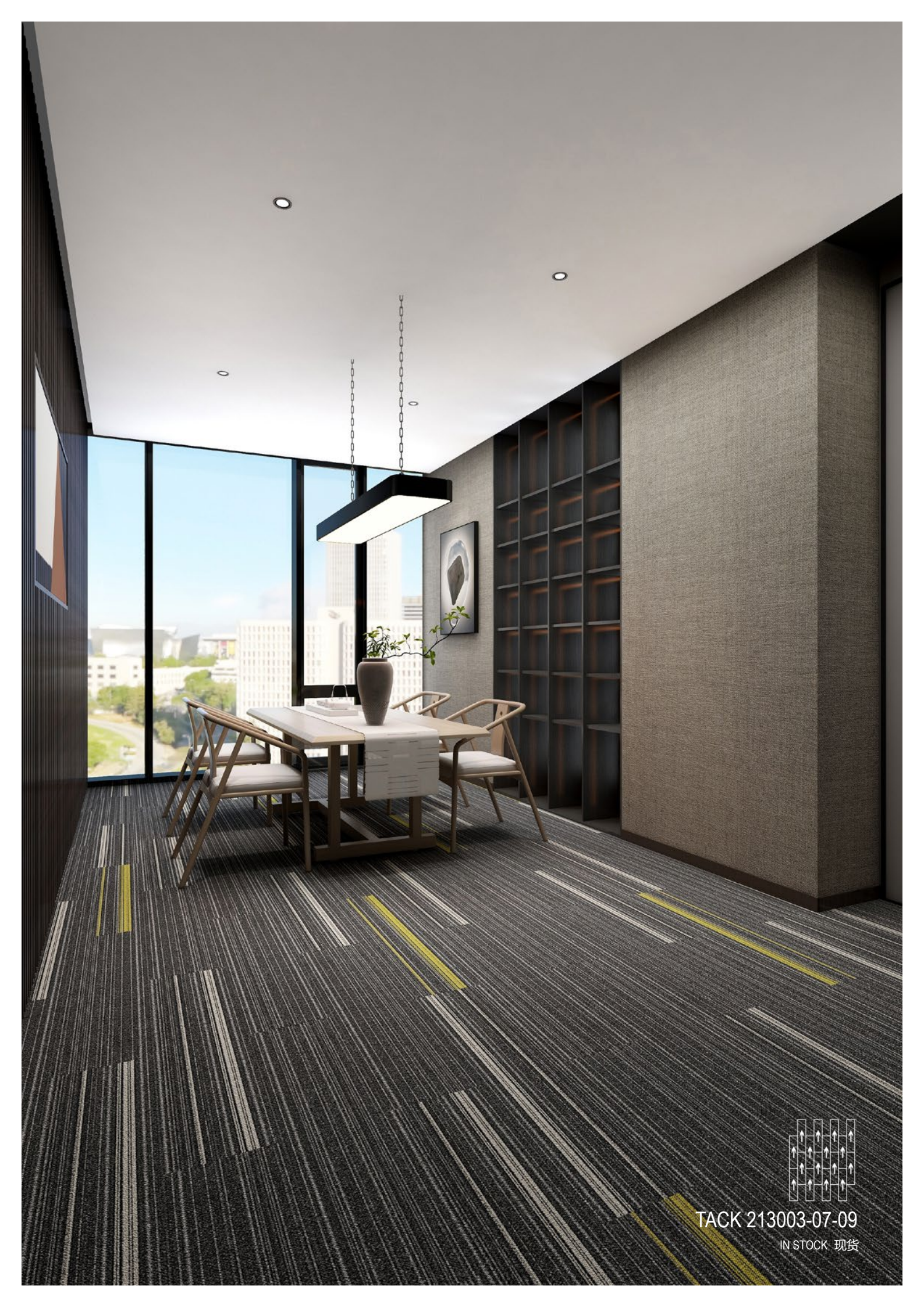




TACK 213

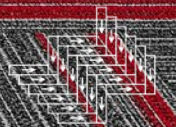


TACK 213001-09
IN STOCK 现货



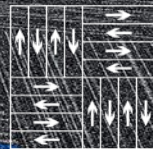
TACK 213003-07-09

IN STOCK 现货



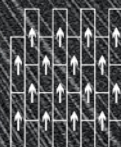
TACK 213006-09

IN STOCK 现货



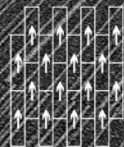
TACK 213008-09

IN STOCK 现货



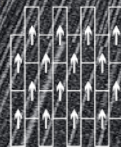
TACK 213001-07-09

IN STOCK 现货



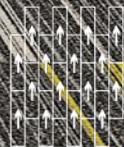
TACK 213004-07-09

IN STOCK 现货



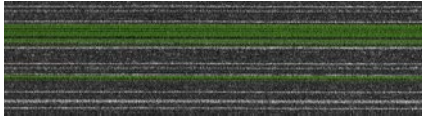
TACK 213008-07-09

IN STOCK 现货



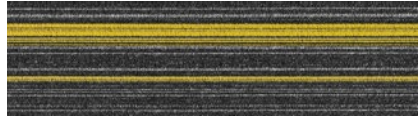
TACK 213003-04-07-09

IN STOCK 现货



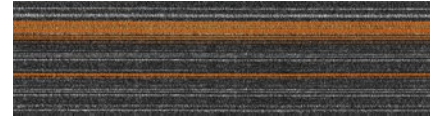
▲ IN STOCK 现货

TACK 213001



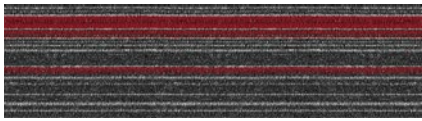
▲ IN STOCK 现货

TACK 213003



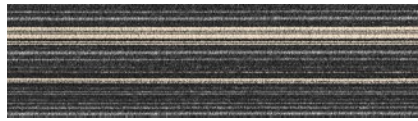
▲ IN STOCK 现货

TACK 213004



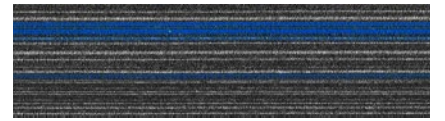
▲ IN STOCK 现货

TACK 213006



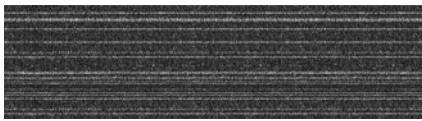
▲ IN STOCK 现货

TACK 213007



▲ IN STOCK 现货

TACK 213008



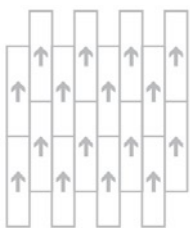
▲ IN STOCK 现货

TACK 213009

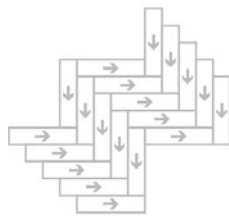
Specification 技术指标

Product Name 产品名称	TACK 213
Product Code 产品编码	TACK 213
Tufted construction 簇绒结构	Multi-level Loop 高低圈绒
Fiber 纱线	100% PP 100% 丙纶
Dye method 染色工艺	Solution Dyed 原液染色
Gauge 针距	1/10
Tufted weight(g/m ²) 绒重 (克 / 平方米)	480 ± 5%
Tile size(mm) 地毯尺寸 (毫米)	250 x 1000
Pile height(mm) 平均绒高 (毫米)	4.0 ± 0.5
Total thickness(mm) 总厚度 (毫米)	6.0 ± 0.5
Standard Backing 标准底背	Glass fiber reinforced PVC

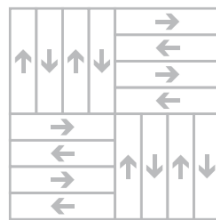
Recommended installation methods 建议铺装方式



Ashlar
上下错半



Herringbone
人字形



Basketweave
网篮形



Anti-fouling



Anti-static



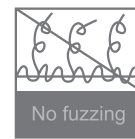
Environmental



Passed various tests



Fashion colors



100%B,C,F Yarn



Reduced Flammability



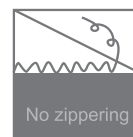
Isolation acoustic



Colorfast



Chair roulettes



No edge ravel



Wear resistance



Soil Resistance



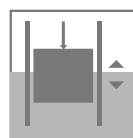
Wear Warranties



Dimensional Stability



Long life-span



Easy to transport



Non-mold