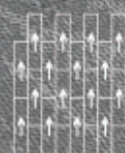




LAGOM 229



LAGOM 229001-Ashlar
IN STOCK 现货



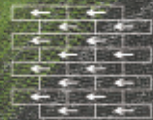
Architecture
Design&Carpet



LAGOM 229001-02-Ashlar

3:7

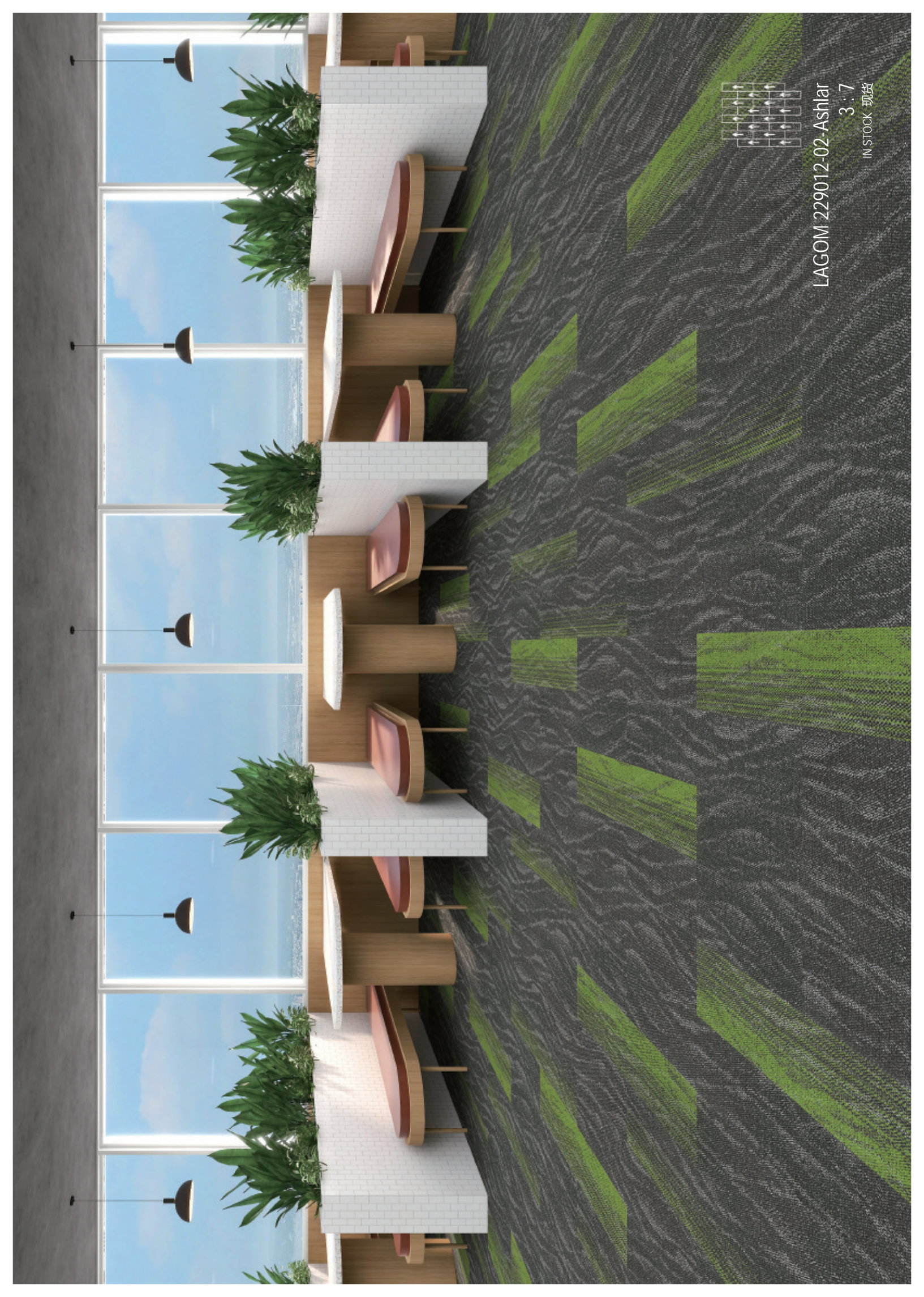
IN STOCK 现货

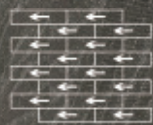


LAGOM 229012-02-Ashlar

3 : 7

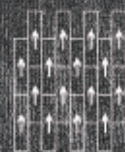
IN STOCK 现货





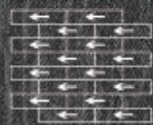
LAGOM 229003-13-Ashlar

IN STOCK 现货

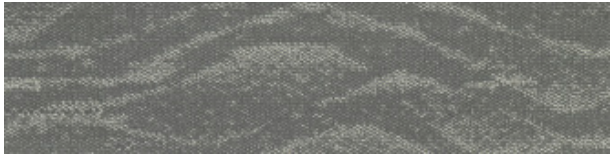


LAGOM 229004-Ashlar

IN STOCK 现货

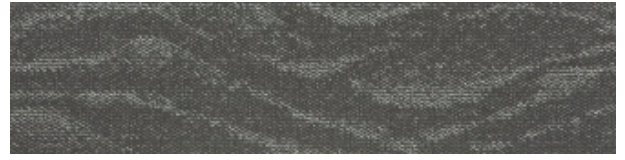


LAGOM 229004-14-Ashlar
IN STOCK 现货



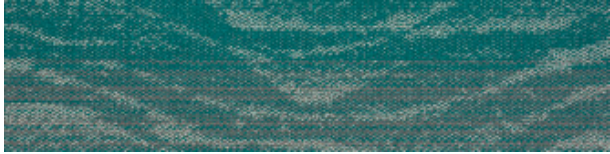
▲ IN STOCK 现货

LAGOM 229001



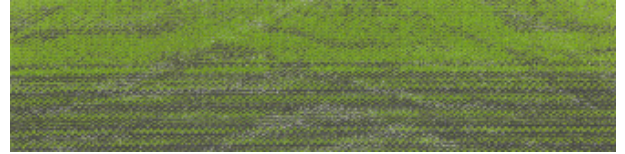
▲ IN STOCK 现货

LAGOM 229002



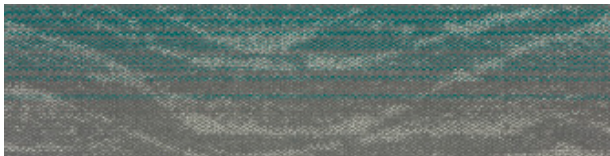
▲ IN STOCK 现货

LAGOM 229011



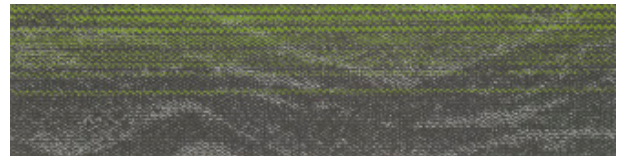
▲ IN STOCK 现货

LAGOM 229012



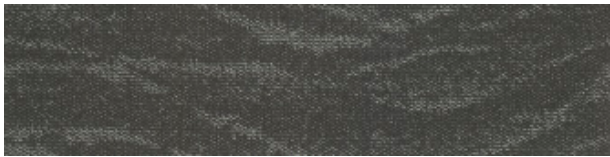
▲ IN STOCK 现货

LAGOM 229003



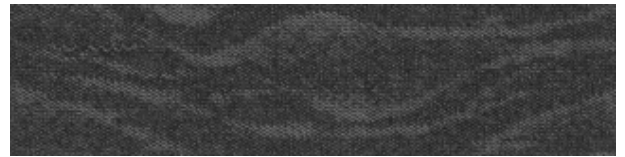
▲ IN STOCK 现货

LAGOM 229004



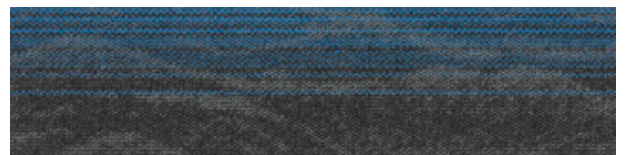
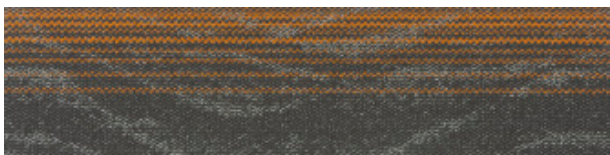
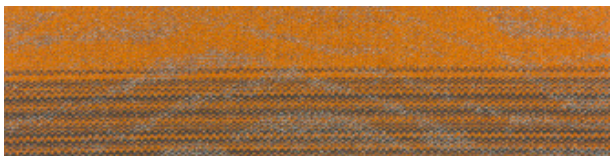
▲ IN STOCK 现货

LAGOM 229013



▲ IN STOCK 现货

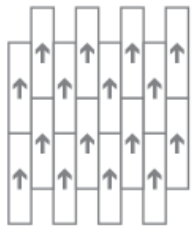
LAGOM 229014



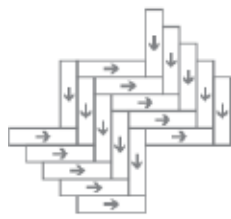
Specification 技术指标

Product Name 产品名称	LAGOM 229
Product Code 产品编码	LAGOM 229
Tufted construction 簇绒结构	Multi-Level loop 高低圈绒
Fiber 纱线	100% Nylon 100% 尼龙
Dye method 染色工艺	Solution Dyed 原液染色
Gauge 针距	1/12
Tufted weight(g/m ²) 绒重(克/平方米)	510±5%
Tile size(mm) 地毯尺寸(毫米)	250 x 1000
Pile height(mm) 平均绒高(毫米)	3.5 ± 0.5
Total thickness(mm) 总厚度(毫米)	6.0 ± 0.5
Standard Backing 标准底背	Glass fiber reinforced PVC

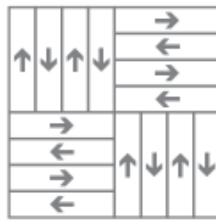
Recommended installation methods 建议铺装方式



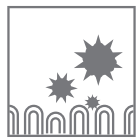
Ashlar
上下错半



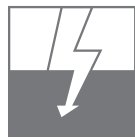
Herringbone
人字铺



Basketweave
网篮形



Anti-fouling



Anti-static



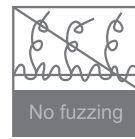
Environmental



Passed various tests



Fashion colors



100%B,C,F Yarn



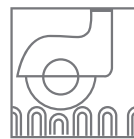
Reduced Flammability



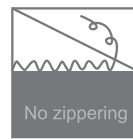
Isolation acoustic



Colorfast



Chair roulettes



No edge ravel



Wear resistance



Soil Resistance



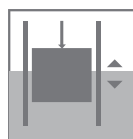
Wear Warranties



Dimensional Stability



Long life-span



Easy to transport



Non-moid