

# Dongguan Houjie Keming Electronic Factory

Tel: 86-769-85933616

Fax: 86-769-85994676

Email: sales1@dgkeming.com.cn

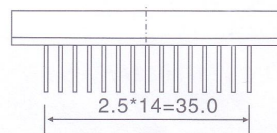
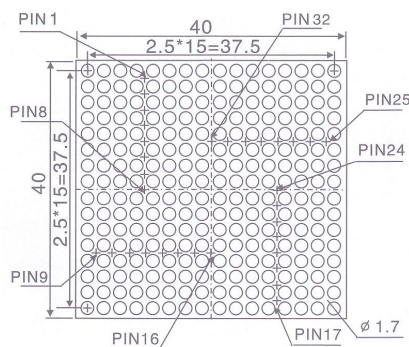
## Specifications of Dot Matrix LED display

Part: KEM-21616-BSR

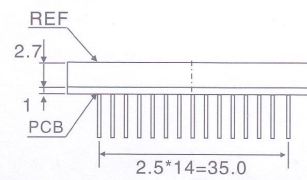
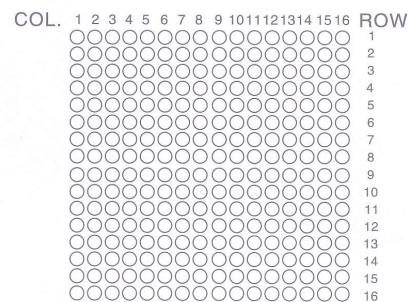
Features:

Dot diameter	1.7mm	Epoxy color	Milky white
Array	16x16	Pin configuration	Per your choice
Surface color	Black	Emitting color	Super red

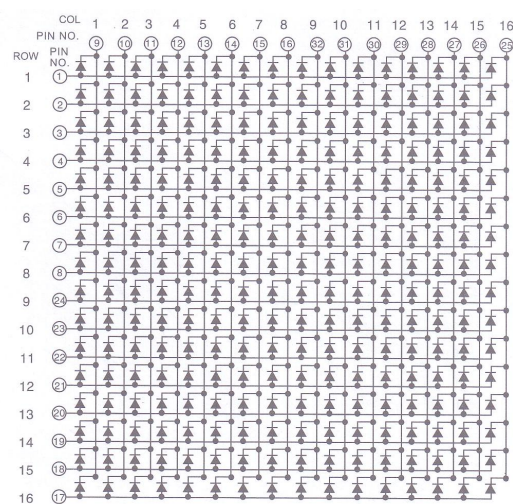
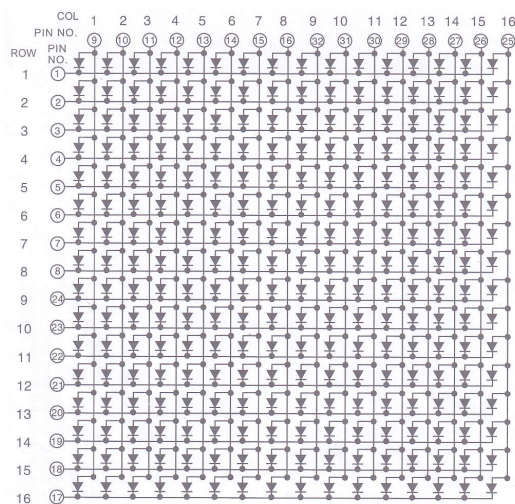
Package dimension& Internal circuit diagram



Common Cathode



Common Anode



Address: No.1 Ping' an street, Xiangdong new village, Baihao industrial district, Houjie town, Dongguan city, Guangdong province, China

# Dongguan Houjie Keming Electronic Factory

Tel: 86-769-85933616

Fax: 86-769-85994676

Email: sales1@dgkeming.com.cn

## ☆ ABSOLUTE MAXIMUM RATINGS (Ta=25°C)

ITEM	Amber	Super green	Super red	High red	Yellow green	Yellow	Blue	Pure green	White	UNIT
Power Dissipation (Pd)	52	50	40	36	44	42	66	66	66	mW
Peak Forward Current (Ifp)	100	100	100	100	100	100	100	100	100	mA
Continuous Forward Current(If)	20	20	20	20	20	20	20	20	20	mA
Reverse Voltage (Vr)	5	5	5	5	5	5	5	5	5	V
Reverse Current(Ir)	20	20	20	20	20	20	20	20	20	Ua
Operating Temperature Range(Ta)	-35~+85									°C
Storage Temperature Range(Tstg)	-35~+85									°C
Lead Solder Temperature	260°C for 3 sec									

## ☆ Color Code & Chip characteristic: (Test Condition: IF=20Ma)

Emitting Color	Peak Wavelength		Forward Voltage IF=20Ma (V)		Luminous Intensity IF=20Ma(mcd)
	(λp)	△λ	Typ	Max	Max
Ultra Orange	620-630	30	1.9	2.5	30
Super green	565-575	30	2.2	2.6	80
Super red	630-640	20	1.9	2.5	100
High red	640-660	20	2.1	2.5	60
Yellow green	570-580	30	2.2	2.6	45
Ultra Yellow	590-600	35	2.1	2.5	60
Blue	465-475	40	3.3	4.0	145
Pure green	515-525	40	3.3	4.0	200
White			3.3	4.0	180

Address: No.1 Ping' an street, Xiangdong new village, Baihao industrial district, Houjie town, Dongguan city, Guangdong province, China