

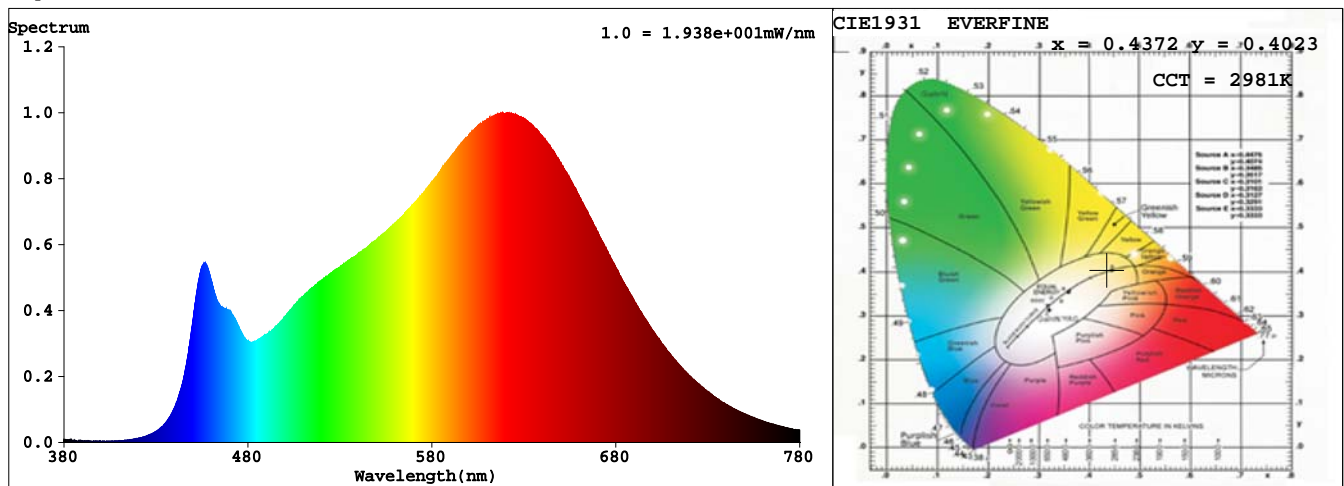
Spectrum Test Report

Sample	:	Date	:	2019-12-15 15:20:52	
Specification	:	YP2019120703 5050 24V30灯 3000K R 1.5Sam. Status	:		
Sample No.	:	1465	Instrument	:	HaasSuite(EVERFINE)
Manufacturer	:		Test by	:	
Assessor	:	damin			
Remark	:				

Test Condition

Temperature	:	25.3Deg	RH	:	65.0%
WL Range	:	380nm-780nm	IP	:	53112 (81%)
Test Mode	:	Fast Test	T	:	202 ms
			Sensitivity	:	High

Spectrum



Spectral Distribution

CIE1931 Chromaticity Diagram

Colorimetric Parameters

Chromaticity Coordinate: $x = 0.4372$ $y = 0.4023$ / $u' = 0.2515$ $v' = 0.5207$ ($duv = -7.52e-04$)

CCT= 2981K Prcp WL: $L_d = 583.2\text{nm}$ Purity=52.0%

Peak WL: $L_p = 619\text{nm}$ FWHM: $=160.9\text{nm}$ Ratio: R=24.6% G=72.0% B=3.3%

Render Index: $R_a = 93.3$ CRI = 91.3 AvgR = 91.3 TM30: $R_f = 90$ $R_g = 98$

R1 =95 R2 =100 R3 =96 R4 =92 R5 =94 R6 =96 R7 =90

R8 =82 R9 =63 R10=98 R11=94 R12=81 R13=97 R14=99 R15=91

LEVEL:OUT WHITE:ANSI_3000K

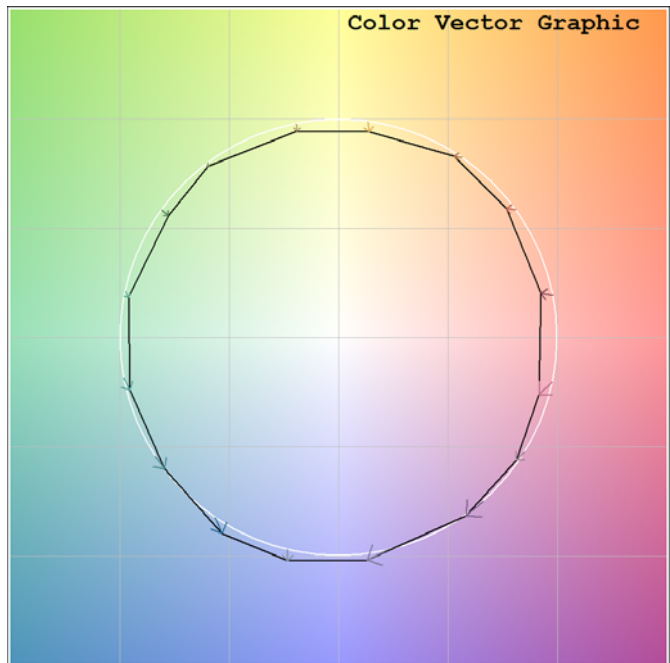
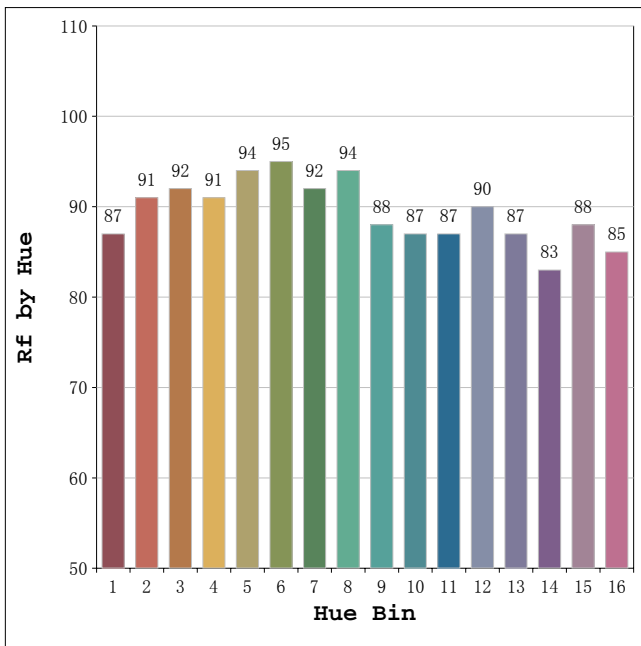
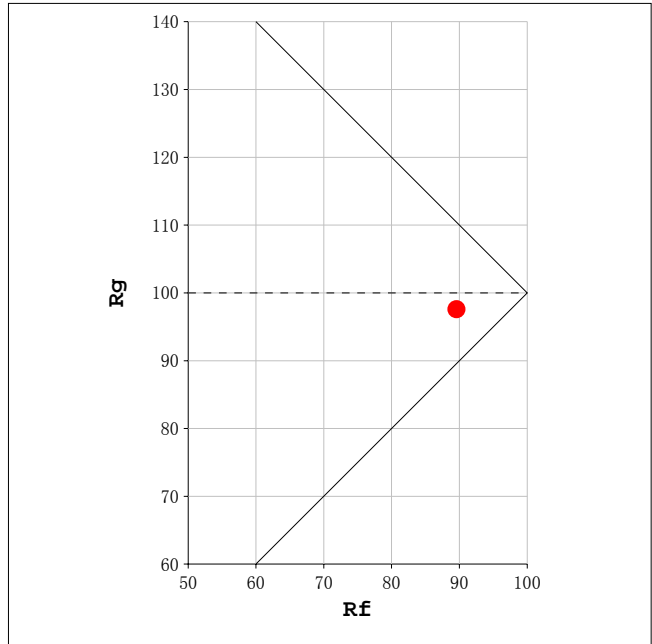
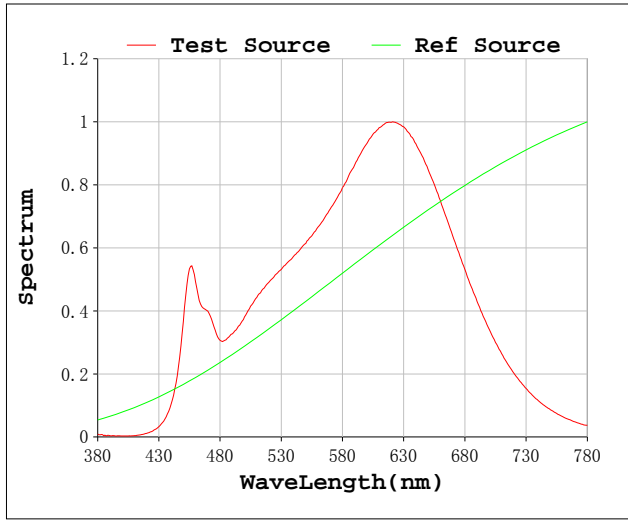
Photometric & Radiometric Parameters

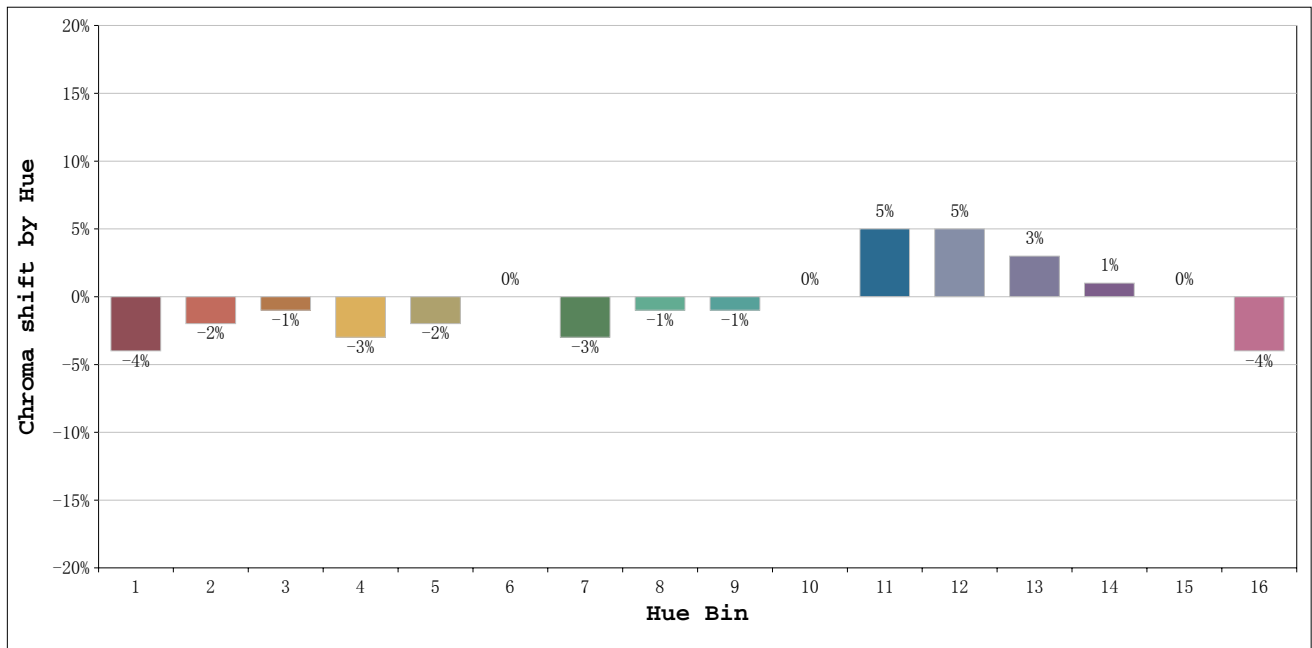
Flux = 959.20 lm Eff. : 72.07 lm/W $F_e = 3.3791$ W

Electrical parameters

V = 24.00 V I = 0.5546 A P = 13.31 W PF = 1.000 F=0.00 Hz

Rf: 90 CCT: 2981 K u': 0.2515
 Rg: 98 Duv: -0.0008 v': 0.5207





Hue Bin	Hue Angle	Rf	Graphic shift(%)	
			Chroma	Hue
1	0.0° - 22.5°	87	-4	2
2	22.5° - 45.0°	91	-2	3
3	45.0° - 67.5°	92	-1	3
4	67.5° - 90.0°	91	-3	0
5	90.0° - 112.5°	94	-2	0
6	112.5° - 135.0°	95	0	1
7	135.0° - 157.5°	92	-3	1
8	157.5° - 180.0°	94	-1	3
9	180.0° - 202.5°	88	-1	6
10	202.5° - 225.0°	87	0	7
11	225.0° - 247.5°	87	5	7
12	247.5° - 270.0°	90	5	1
13	270.0° - 292.5°	87	3	-9
14	292.5° - 315.0°	83	1	-9
15	315.0° - 337.5°	88	0	-4
16	337.5° - 360.0°	85	-4	-6