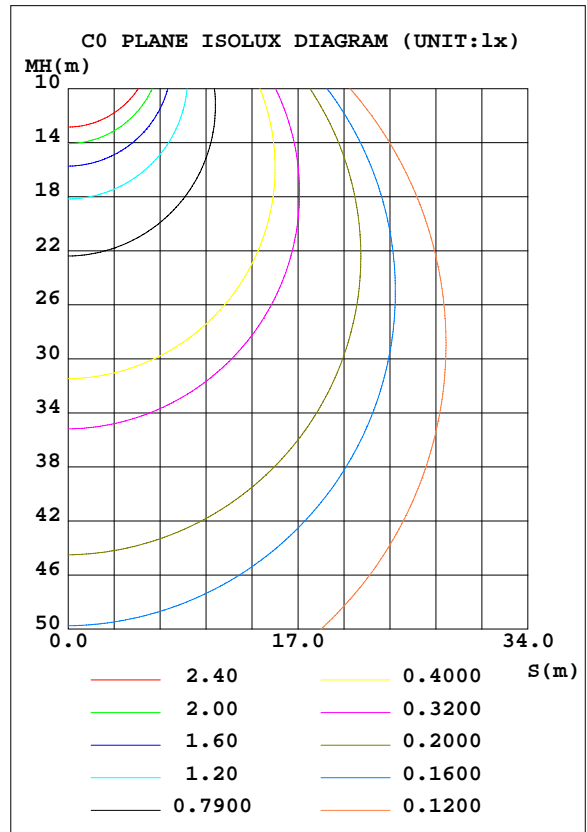
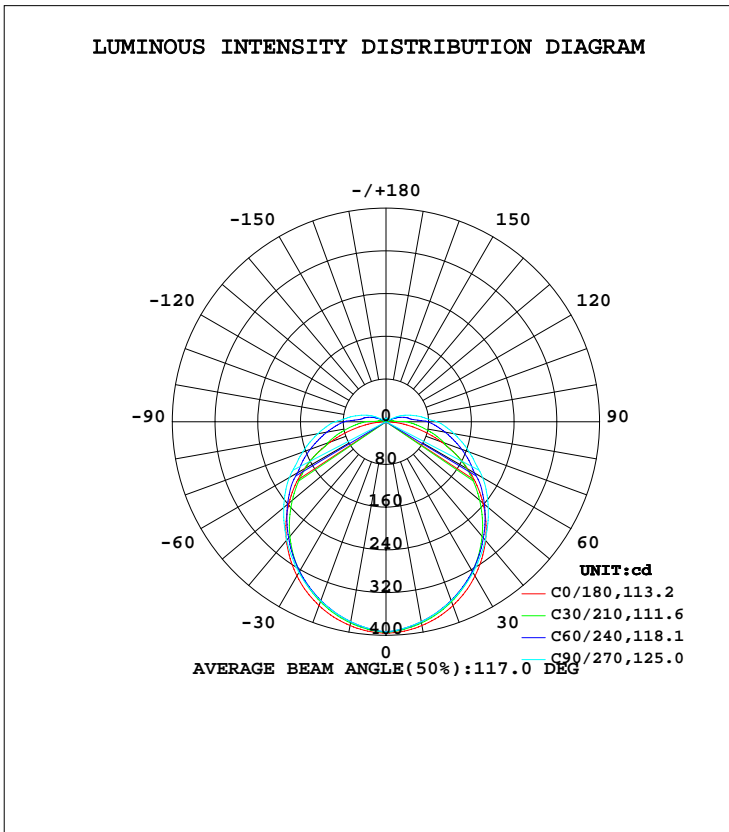


LUMINAIRE PHOTOMETRIC TEST REPORT

NAME: FEN18WT-P7-G1 28HZ940 24V210S 1307L05	TYPE:	WEIGHT:
SPEC.:	DIM.: 1307	SERIAL No.:
MFR.:	SUR.:1*0.013	Shielding Angle:

DATA OF LAMP		PHOTOMETRIC DATA			
MODEL		Imax(cd)	396.0	S/MH(C0/180)	1.25
NOMINAL POWER(W)	17.957	LOR(%)	100.0	S/MH(C90/270)	1.24
RATED VOLTAGE(V)	24	TOTAL FLUX(lm)	1329.0	η UP, DN(C0-180)	3.4,46.6
NOMINAL FLUX(lm)	1328.97	CIE CLASS	DIRECT	η UP, DN(C180-360)	3.4,46.6
LAMPS INSIDE	1	η up(%)	6.8	CIBSE SHR NOM	1.25
TEST VOLTAGE(V)	24	η down(%)	93.2	CIBSE SHR MAX	1.35



C Range: 0 - 90DEG
 C Interval: 15.0DEG
 Test Speed: HIGH
 Temperature:25.3DEG
 Operators:
 Test Date:2019-04-17

γ Range: 0 - 180DEG
 γ Interval: 1.0DEG
 Test System:EVERFINE GO-2000A_V1 SYSTEM V2.0.362
 Humidity:65.0%
 Test Distance:12.226m [K=1.0000]
 Remarks:

ZONAL FLUX DIAGRAM

ZONAL FLUX DIAGRAM:

γ	C0	C45	C90	C135	C180	C225	C270	C315	γ	Φ zone	Φ total	%lum, lamp
10	387.6	381.2	380.2	381.2	387.6	381.2	380.2	381.2	0- 10	36.96	36.96	2.78,2.78
20	366.4	357.2	357.0	357.2	366.4	357.2	357.0	357.2	10- 20	104.9	141.9	10.7,10.7
30	333.5	323.2	326.0	323.2	333.5	323.2	326.0	323.2	20- 30	158.2	300.1	22.6,22.6
40	290.0	281.4	289.3	281.4	290.0	281.4	289.3	281.4	30- 40	191.4	491.5	37,37
50	237.3	234.1	250.0	234.1	237.3	234.1	250.0	234.1	40- 50	201.8	693.3	52.2,52.2
60	176.8	182.8	208.9	182.8	176.8	182.8	208.9	182.8	50- 60	190.2	883.5	66.5,66.5
70	110.7	136.3	166.0	136.3	110.7	136.3	166.0	136.3	60- 70	158.3	1042	78.4,78.4
80	45.42	94.54	129.4	94.54	45.42	94.54	129.4	94.54	70- 80	118.4	1160	87.3,87.3
90	3.085	60.51	94.56	60.51	3.085	60.51	94.56	60.51	80- 90	78.84	1239	93.2,93.2
100	1.648	27.05	61.36	27.05	1.648	27.05	61.36	27.05	90-100	40.82	1280	96.3,96.3
110	2.524	11.17	35.38	11.17	2.524	11.17	35.38	11.17	100-110	23.05	1303	98,98
120	3.275	4.495	9.479	4.495	3.275	4.495	9.479	4.495	110-120	9.642	1313	98.8,98.8
130	3.869	4.769	5.355	4.769	3.869	4.769	5.355	4.769	120-130	4.238	1317	99.1,99.1
140	4.369	5.254	5.393	5.254	4.369	5.254	5.393	5.254	130-140	3.831	1321	99.4,99.4
150	4.838	5.746	5.581	5.746	4.838	5.746	5.581	5.746	140-150	3.364	1324	99.6,99.6
160	5.354	6.074	5.964	6.074	5.354	6.074	5.964	6.074	150-160	2.667	1327	99.8,99.8
170	5.948	6.403	6.316	6.403	5.948	6.403	6.316	6.403	160-170	1.726	1328	100,100
180	6.590	6.699	6.801	6.699	6.590	6.699	6.801	6.699	170-180	0.6165	1329	100,100
DEG	LUMINOUS INTENSITY:cd									UNIT:lm		

Conical surface Flux(90deg): 592.5 lm

%lum = 44.6%
%lamp = 44.6%

Conical surface Flux(120deg): 883.46 lm

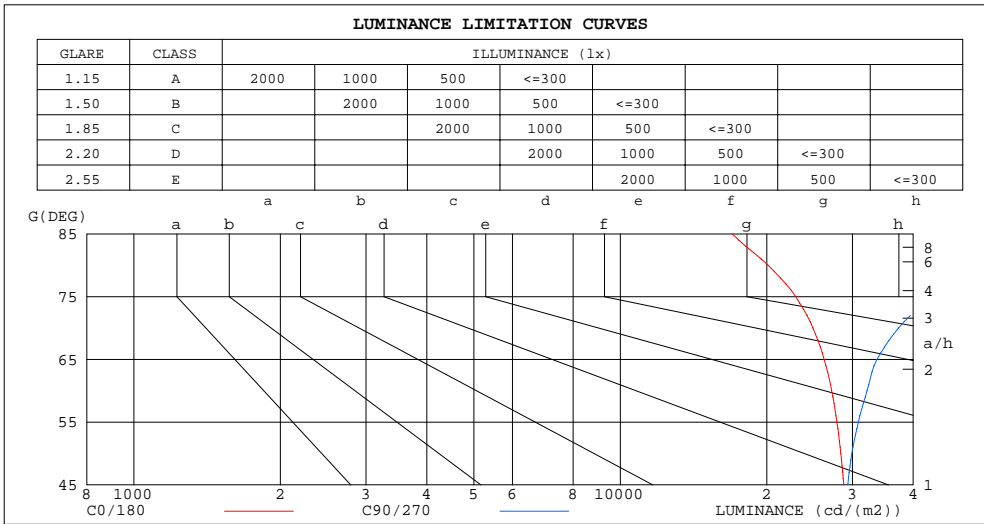
%lum = 66.5%
%lamp = 66.5%

C Range: 0 - 90DEG
C Interval: 15.0DEG
Test Speed: HIGH
Temperature:25.3DEG
Operators:
Test Date:2019-04-17

γ Range: 0 - 180DEG
γ Interval: 1.0DEG
Test System:EVERFINE GO-2000A_V1 SYSTEM V2.0.362
Humidity:65.0%
Test Distance:12.226m [K=1.0000]
Remarks:

LUMINANCE LIMITATION CURVES

NAME: FEN18WT-P7-G1 28HZ940 24V210S 1307L05	TYPE:	WEIGHT:
SPEC.:	DIM.: 1307	SERIAL No.:
MFR.:	SUR.:1*0.013	Shielding Angle:



LUMINANCE cd/(m2)		
G(DEG)	C0/180	C90/270
85	16988	99430
80	20120	57338
75	22934	43809
70	24892	37333
65	26240	33697
60	27199	32142
55	27880	30854
50	28394	29923
45	28796	29352

C Range: 0 - 90DEG
 C Interval: 15.0DEG
 Test Speed: HIGH
 Temperature: 25.3DEG
 Operators:
 Test Date: 2019-04-17

γ Range: 0 - 180DEG
 γ Interval: 1.0DEG
 Test System: EVERFINE GO-2000A_V1 SYSTEM V2.0.362
 Humidity: 65.0%
 Test Distance: 12.226m [K=1.0000]
 Remarks:

WEC AND CCEC

NAME: FEN18WT-P7-G1 28HZ940 24V210S 1307L05	TYPE:	WEIGHT:
SPEC.:	DIM.: 1307	SERIAL No.:
MFR.:	SUR.:1*0.013	Shielding Angle:

ρcc	80%			70%			50%			30%			10%			0
ρw	50%	30%	10%	50%	30%	10%	50%	30%	10%	50%	30%	10%	50%	30%	10%	0
ρfc	20%			20%			20%			20%			20%			0
RCR	RCR:Room Cavity Ratio						Wall Exitance Coefficients(WEC)									
0.0																
1.0	.363	.206	.065	.354	.202	.064	.336	.193	.062	.320	.185	.059	.306	.177	.057	
2.0	.321	.176	.054	.313	.172	.053	.298	.165	.051	.283	.159	.050	.270	.153	.048	
3.0	.289	.154	.046	.282	.151	.045	.268	.145	.044	.255	.140	.043	.243	.134	.042	
4.0	.262	.136	.040	.255	.134	.040	.243	.129	.038	.231	.124	.037	.221	.120	.037	
5.0	.239	.122	.035	.234	.120	.035	.222	.116	.034	.212	.112	.033	.202	.108	.032	
6.0	.220	.110	.032	.215	.109	.031	.205	.105	.031	.195	.102	.030	.187	.098	.029	
7.0	.204	.101	.029	.199	.099	.028	.190	.096	.028	.181	.093	.027	.173	.090	.026	
8.0	.189	.093	.026	.185	.091	.026	.177	.088	.025	.169	.086	.025	.162	.083	.024	
9.0	.177	.086	.024	.173	.084	.024	.165	.082	.023	.158	.079	.023	.152	.077	.022	
10.0	.166	.079	.022	.162	.078	.022	.155	.076	.021	.149	.074	.021	.143	.072	.021	

ρcc	80%			70%			50%			30%			10%			0
ρw	50%	30%	10%	50%	30%	10%	50%	30%	10%	50%	30%	10%	50%	30%	10%	0
ρfc	20%			20%			20%			20%			20%			0
RCR	RCR:Room Cavity Ratio						Ceiling Cavity Exitance Coefficients(CCEC)									
0.0	.242	.242	.242	.207	.207	.207	.141	.141	.141	.081	.081	.081	.026	.026	.026	
1.0	.236	.208	.182	.202	.178	.157	.138	.123	.108	.079	.071	.063	.025	.023	.020	
2.0	.229	.184	.147	.196	.158	.127	.134	.110	.088	.077	.064	.052	.025	.021	.017	
3.0	.221	.167	.124	.189	.144	.108	.130	.100	.076	.075	.058	.045	.024	.019	.015	
4.0	.213	.154	.109	.183	.133	.095	.126	.093	.067	.073	.054	.040	.023	.018	.013	
5.0	.205	.144	.099	.176	.125	.086	.121	.087	.061	.070	.051	.036	.023	.017	.012	
6.0	.198	.136	.091	.170	.118	.080	.117	.082	.056	.068	.048	.033	.022	.016	.011	
7.0	.191	.129	.086	.164	.112	.075	.113	.078	.053	.066	.046	.032	.021	.015	.010	
8.0	.184	.123	.082	.158	.107	.071	.110	.075	.051	.064	.044	.030	.021	.015	.010	
9.0	.178	.118	.078	.153	.103	.068	.106	.072	.049	.062	.043	.029	.020	.014	.010	
10.0	.172	.114	.076	.148	.099	.066	.103	.070	.047	.060	.041	.028	.019	.014	.009	

C Range: 0 - 90DEG
 C Interval: 15.0DEG
 Test Speed: HIGH
 Temperature:25.3DEG
 Operators:
 Test Date:2019-04-17

γ Range: 0 - 180DEG
 γ Interval: 1.0DEG
 Test System:EVERFINE GO-2000A_V1 SYSTEM V2.0.362
 Humidity:65.0%
 Test Distance:12.226m [K=1.0000]
 Remarks:

UGR(Unified Glare Rating) Table

NAME: FEN18WT-P7-G1 28HZ940 24V210S 1307L05					TYPE:					WEIGHT:				
SPEC.:					DIM.: 1307					SERIAL No.:				
MFR.:					SUR.:1*0.013					Shielding Angle:				
ceiling/cavity	0.7	0.7	0.5	0.5	0.3	0.7	0.7	0.5	0.5	0.3				
walls	0.5	0.3	0.5	0.3	0.3	0.5	0.3	0.5	0.3	0.3				
working plane	0.2	0.2	0.2	0.2	0.2	0.2	0.2	0.2	0.2	0.2				
Room dimensions	Viewed crosswise					Viewed endwise								
x = 2H y = 2H	22.7	24.2	23.0	24.5	24.8	23.4	24.9	23.8	25.2	25.6				
3H	24.2	25.6	24.6	25.9	26.3	25.7	27.1	26.1	27.5	27.8				
4H	24.8	26.1	25.2	26.5	26.9	27.0	28.3	27.4	28.7	29.1				
6H	25.2	26.5	25.6	26.8	27.3	28.3	29.6	28.8	30.0	30.4				
8H	25.4	26.6	25.8	27.0	27.4	29.1	30.3	29.5	30.7	31.1				
12H	25.4	26.6	25.9	27.0	27.5	29.9	31.1	30.4	31.5	32.0				
4H 2H	23.4	24.7	23.8	25.1	25.5	24.0	25.3	24.4	25.7	26.1				
3H	25.1	26.3	25.6	26.7	27.2	26.5	27.7	27.0	28.1	28.6				
4H	25.9	27.0	26.4	27.4	27.9	28.0	29.0	28.4	29.5	30.0				
6H	26.4	27.4	26.9	27.9	28.4	29.6	30.5	30.1	31.0	31.5				
8H	26.6	27.5	27.2	28.0	28.6	30.4	31.3	31.0	31.8	32.4				
12H	26.8	27.6	27.3	28.1	28.7	31.4	32.3	32.0	32.8	33.3				
8H 4H	26.6	27.5	27.1	27.9	28.5	28.3	29.2	28.8	29.7	30.2				
6H	27.4	28.2	28.0	28.7	29.3	30.2	30.9	30.7	31.4	32.0				
8H	27.8	28.5	28.3	29.0	29.6	31.3	31.9	31.8	32.5	33.1				
12H	28.1	28.7	28.7	29.2	29.9	32.5	33.1	33.1	33.7	34.3				
12H 4H	26.8	27.6	27.3	28.1	28.6	28.3	29.1	28.9	29.7	30.2				
6H	27.8	28.5	28.3	29.0	29.6	30.3	31.0	30.8	31.5	32.1				
8H	28.3	28.9	28.9	29.4	30.1	31.5	32.1	32.0	32.6	33.2				
Variations with the observer position at spacings:														
S = 1.0H	+ 0.1 / - 0.1					+ 0.1 / - 0.1								
1.5H	+ 0.1 / - 0.2					+ 0.2 / - 0.3								
2.0H	+ 0.1 / - 0.2					+ 0.2 / - 0.3								

CIE Pub.117, 1329 lm Total Lamp Luminous Flux Correct (8log(F/F0) = 1.0)

C Range: 0 - 90DEG
 C Interval: 15.0DEG
 Test Speed: HIGH
 Temperature:25.3DEG
 Operators:
 Test Date:2019-04-17

γ Range: 0 - 180DEG
 γ Interval: 1.0DEG
 Test System:EVERFINE GO-2000A_V1 SYSTEM V2.0.362
 Humidity:65.0%
 Test Distance:12.226m [K=1.0000]
 Remarks:

UTILIZATION FACTORS TABLE

NAME: FEN18WT-P7-G1 28HZ940 24V210S 1307L05	TYPE:	WEIGHT:
SPEC.:	DIM.: 1307	SERIAL No.:
MFR.:	SUR.:1*0.013	Shielding Angle:

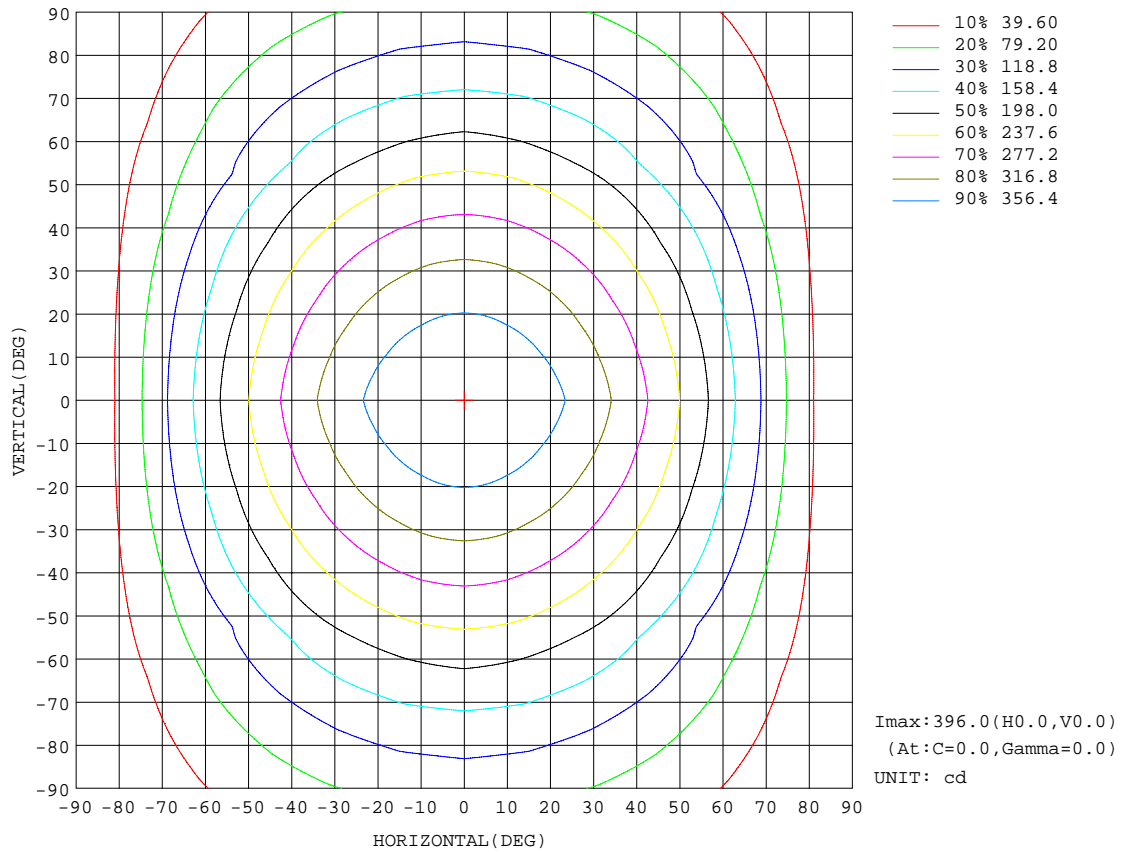
REFLECTANCE										
Ceiling	0.8	0.8	0.8	0.7	0.7	0.7	0.5	0.5	0.5	0
Walls	0.7	0.5	0.3	0.7	0.5	0.3	0.7	0.5	0.3	0
Working plane	0.2	0.2	0.2	0.2	0.2	0.2	0.2	0.2	0.2	0
ROOM INDEX	UTILIZATION FACTORS(PERCENT) $k(RI) \times RCR = 5$									
k = 0.60	53	41	34	52	41	34	51	40	33	27
0.80	62	50	42	61	50	42	59	49	42	34
1.00	70	58	50	69	58	50	66	59	49	41
1.25	77	66	58	76	65	57	72	63	56	48
1.50	82	71	63	80	70	63	77	68	61	53
2.00	89	79	72	87	78	71	83	75	69	60
2.50	94	84	77	91	83	76	86	79	74	64
3.00	97	89	82	94	87	81	89	83	78	68
4.00	102	94	89	99	92	87	93	88	84	73
5.00	104	98	93	101	96	91	96	91	87	76
ROOM INDEX	UF(total)									Direct
According to DIN EN 13032-2 2004			Suspended				SHRNOM = 1.25			

C Range: 0 - 90DEG
 C Interval: 15.0DEG
 Test Speed: HIGH
 Temperature:25.3DEG
 Operators:
 Test Date:2019-04-17

γ Range: 0 - 180DEG
 γ Interval: 1.0DEG
 Test System:EVERFINE GO-2000A_V1 SYSTEM V2.0.362
 Humidity:65.0%
 Test Distance:12.226m [K=1.0000]
 Remarks:

ISOCANDELA DIAGRAM

NAME: FEN18WT-P7-G1 28HZ940 24V210S 1307L05	TYPE:	WEIGHT:
SPEC.:	DIM.: 1307	SERIAL No.:
MFR.:	SUR.:1*0.013	Shielding Angle:

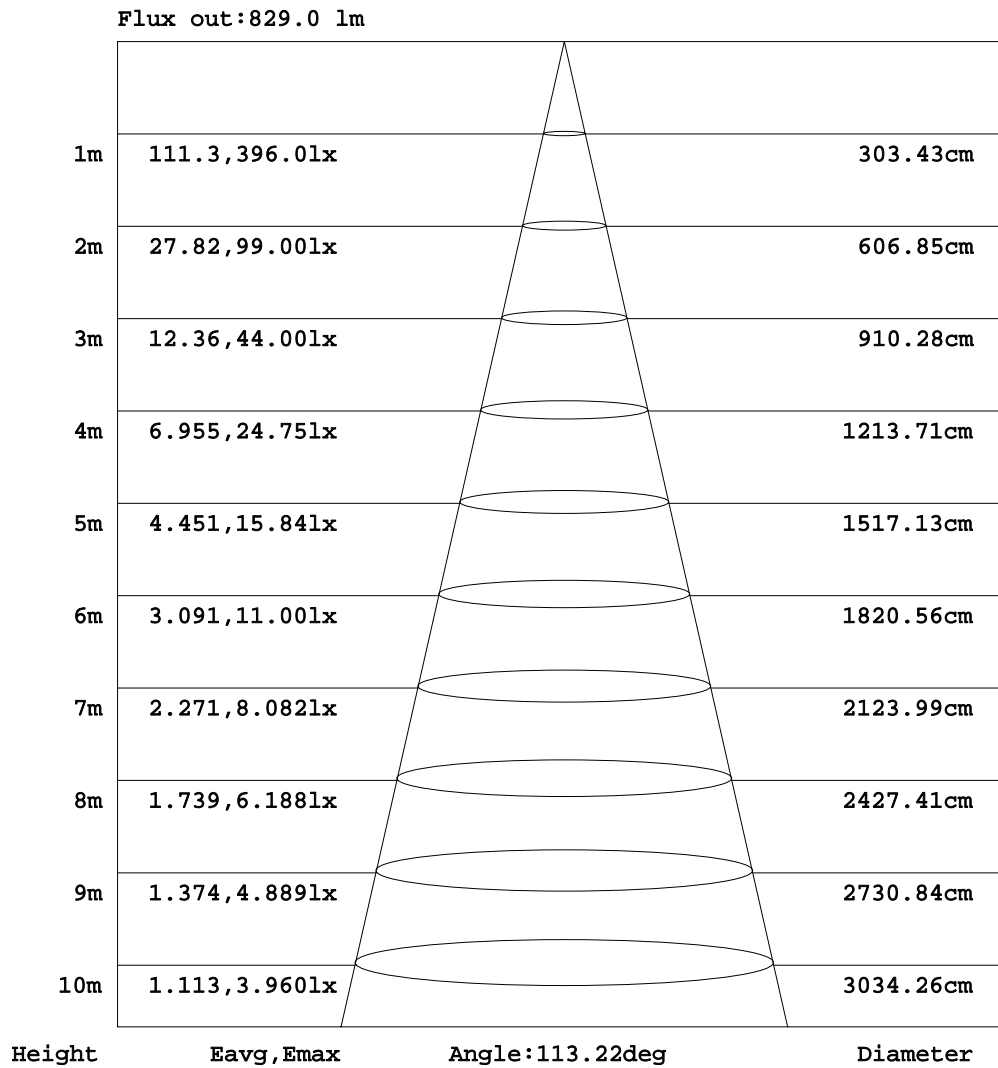


C Range: 0 - 90DEG
 C Interval: 15.0DEG
 Test Speed: HIGH
 Temperature: 25.3DEG
 Operators:
 Test Date: 2019-04-17

γ Range: 0 - 180DEG
 γ Interval: 1.0DEG
 Test System: EVERFINE GO-2000A_V1 SYSTEM V2.0.362
 Humidity: 65.0%
 Test Distance: 12.226m [K=1.0000]
 Remarks:

AAI Figure

NAME: FEN18WT-P7-G1 28HZ940 24V210S 1307L05	TYPE:	WEIGHT:
SPEC.:	DIM.: 1307	SERIAL No.:
MFR.:	SUR.:1*0.013	Shielding Angle:

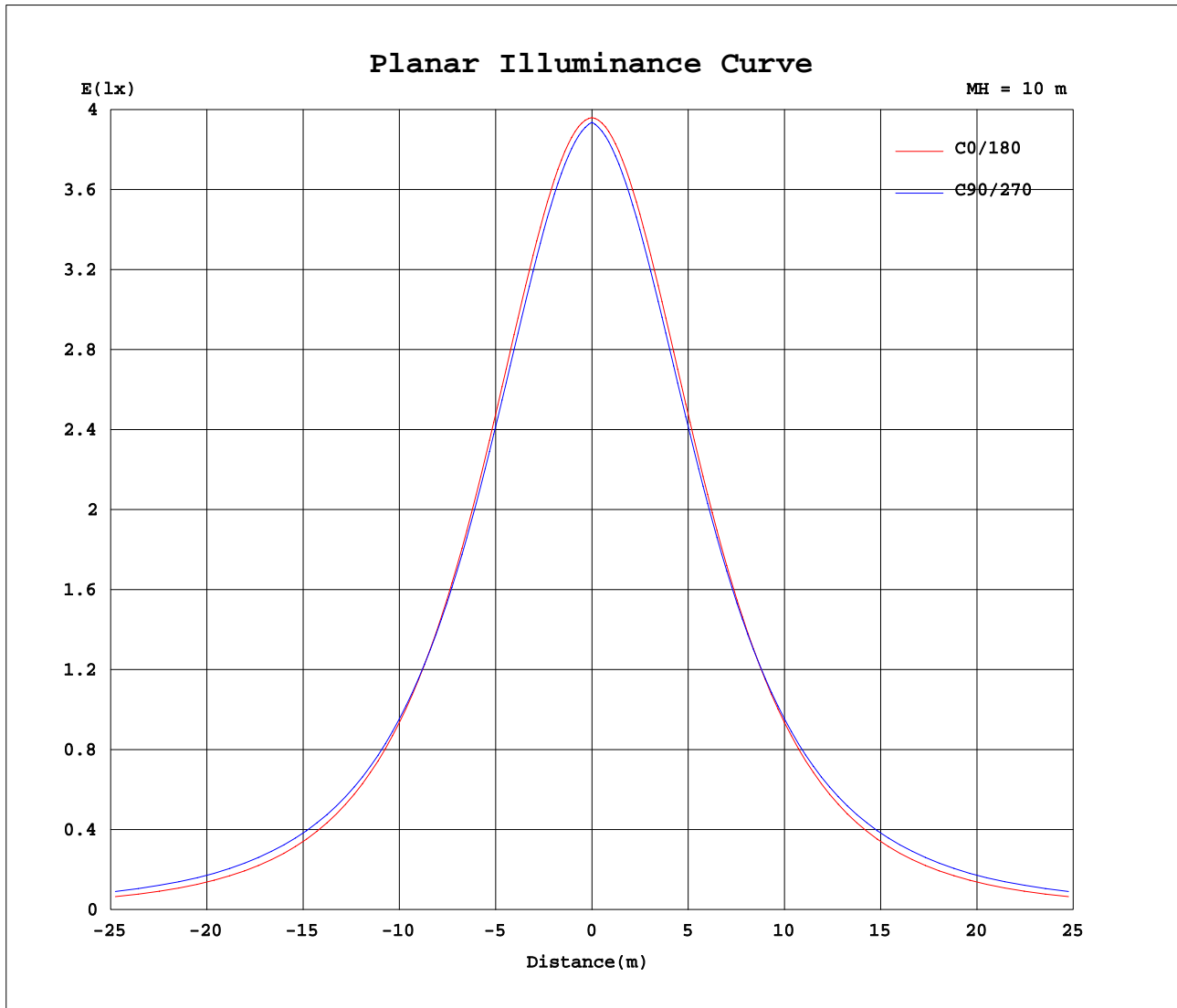


Note:The Curves indicate the illuminated area and the average illumination when the luminaire is at different distance.

C Range: 0 - 90DEG
 C Interval: 15.0DEG
 Test Speed: HIGH
 Temperature:25.3DEG
 Operators:
 Test Date:2019-04-17

γ Range: 0 - 180DEG
 γ Interval: 1.0DEG
 Test System:EVERFINE GO-2000A_V1 SYSTEM V2.0.362
 Humidity:65.0%
 Test Distance:12.226m [K=1.0000]
 Remarks:

Planar Illuminance Curve



C Range: 0 - 90DEG
 C Interval: 15.0DEG
 Test Speed: HIGH
 Temperature: 25.3DEG
 Operators:
 Test Date: 2019-04-17

γ Range: 0 - 180DEG
 γ Interval: 1.0DEG
 Test System: EVERFINE GO-2000A_V1 SYSTEM V2.0.362
 Humidity: 65.0%
 Test Distance: 12.226m [K=1.0000]
 Remarks:

LUMINOUS DISTRIBUTION INTENSITY DATA

NAME: FEN18WT-P7-G1 28HZ940 24V210S 1307L05	TYPE:	WEIGHT:
SPEC.:	DIM.: 1307	SERIAL No.:
MFR.:	SUR.:1*0.013	Shielding Angle:

Table--1 UNIT: cd

C(DEG) γ (DEG)	0	15	30	45	60	75	90	105	120	135	150	165	180	195	210	225	240	255	270
0	396	395	395	394	394	394	394	394	394	394	395	395	396	395	395	394	394	394	394
5	393	391	390	389	389	388	388	388	389	389	390	391	393	391	390	389	389	388	388
10	388	385	383	381	380	380	380	380	380	381	383	385	388	385	383	381	380	380	380
15	379	375	372	370	370	370	370	370	370	370	372	375	379	375	372	370	370	370	370
20	366	362	359	357	356	357	357	357	356	357	359	362	366	362	359	357	356	357	357
25	351	346	343	341	341	342	342	342	341	341	343	346	351	346	343	341	341	342	342
30	333	328	324	323	323	325	326	325	323	323	324	328	333	328	324	323	323	325	326
35	313	307	303	303	304	307	308	307	304	303	303	307	313	307	303	303	304	307	308
40	290	283	280	281	284	288	289	288	284	281	280	283	290	283	280	281	284	288	289
45	265	258	255	258	262	268	270	268	262	258	255	258	265	258	255	258	262	268	270
50	237	230	229	234	241	247	250	247	241	234	229	230	237	230	229	234	241	247	250
55	208	201	202	210	218	227	230	227	218	210	202	201	208	201	202	210	218	227	230
60	177	171	174	183	192	203	209	203	192	183	174	171	177	171	174	183	192	203	209
65	144	140	144	157	171	181	185	181	171	157	144	140	144	140	144	157	171	181	185
70	111	109	116	136	151	162	166	162	151	136	116	109	111	109	116	136	151	162	166
75	77.2	76.1	94.8	115	131	143	147	143	131	115	94.8	76.1	77.2	76.1	94.8	115	131	143	147
80	45.4	50.2	72.9	94.5	112	125	129	125	112	94.5	72.9	50.2	45.4	50.2	72.9	94.5	112	125	129
85	19.2	31.6	54.1	76.7	95.0	108	113	108	95.0	76.7	54.1	31.6	19.2	31.6	54.1	76.7	95.0	108	113
90	3.08	17.2	38.7	60.5	78.0	90.4	94.6	90.4	78.0	60.5	38.7	17.2	3.08	17.2	38.7	60.5	78.0	90.4	94.6
95	1.24	4.01	14.2	31.5	51.1	67.5	75.3	67.5	51.1	31.5	14.2	4.01	1.24	4.01	14.2	31.5	51.1	67.5	75.3
100	1.65	2.52	12.3	27.1	41.9	54.6	61.4	54.6	41.9	27.1	12.3	2.52	1.65	2.52	12.3	27.1	41.9	54.6	61.4
105	2.11	2.41	6.43	20.1	32.8	43.5	47.5	43.5	32.8	20.1	6.43	2.41	2.11	2.41	6.43	20.1	32.8	43.5	47.5
110	2.52	2.72	3.52	11.2	22.9	32.4	35.4	32.4	22.9	11.2	3.52	2.72	2.52	2.72	3.52	11.2	22.9	32.4	35.4
115	2.93	3.13	3.51	4.77	11.7	20.2	23.0	20.2	11.7	4.77	3.51	3.13	2.93	3.13	3.51	4.77	11.7	20.2	23.0
120	3.27	3.47	3.68	4.50	5.49	7.97	9.48	7.97	5.49	4.50	3.68	3.47	3.27	3.47	3.68	4.50	5.49	7.97	9.48
125	3.61	3.80	3.99	4.62	5.22	5.46	5.45	5.46	5.22	4.62	3.99	3.80	3.61	3.80	3.99	4.62	5.22	5.46	5.45
130	3.87	4.10	4.30	4.77	5.27	5.50	5.36	5.50	5.27	4.77	4.30	4.10	3.87	4.10	4.30	4.77	5.27	5.50	5.36
135	4.12	4.39	4.56	5.00	5.38	5.61	5.36	5.61	5.38	5.00	4.56	4.39	4.12	4.39	4.56	5.00	5.38	5.61	5.36
140	4.37	4.66	4.85	5.25	5.56	5.69	5.39	5.69	5.56	5.25	4.85	4.66	4.37	4.66	4.85	5.25	5.56	5.69	5.39
145	4.63	4.93	5.11	5.52	5.77	5.86	5.47	5.86	5.77	5.52	5.11	4.93	4.63	4.93	5.11	5.52	5.77	5.86	5.47
150	4.84	5.19	5.37	5.75	5.99	6.08	5.58	6.08	5.99	5.75	5.37	5.19	4.84	5.19	5.37	5.75	5.99	6.08	5.58
155	5.07	5.45	5.60	5.96	6.10	6.21	5.76	6.21	6.10	5.96	5.60	5.45	5.07	5.45	5.60	5.96	6.10	6.21	5.76
160	5.35	5.67	5.77	6.07	6.16	6.27	5.96	6.27	6.16	6.07	5.77	5.67	5.35	5.67	5.77	6.07	6.16	6.27	5.96
165	5.61	5.90	5.98	6.21	6.30	6.34	6.14	6.34	6.30	6.21	5.98	5.90	5.61	5.90	5.98	6.21	6.30	6.34	6.14
170	5.95	6.18	6.23	6.40	6.43	6.47	6.32	6.47	6.43	6.40	6.23	6.18	5.95	6.18	6.23	6.40	6.43	6.47	6.32
175	6.32	6.43	6.47	6.65	6.66	6.57	6.50	6.57	6.66	6.65	6.47	6.43	6.32	6.43	6.47	6.65	6.66	6.57	6.50
180	6.59	6.60	6.64	6.70	6.86	6.82	6.80	6.82	6.86	6.70	6.64	6.60	6.59	6.60	6.64	6.70	6.86	6.82	6.80

C Range: 0 - 90DEG
 C Interval: 15.0DEG
 Test Speed: HIGH
 Temperature: 25.3DEG
 Operators:
 Test Date: 2019-04-17

γ Range: 0 - 180DEG
 γ Interval: 1.0DEG
 Test System: EVERFINE GO-2000A_V1 SYSTEM V2.0.362
 Humidity: 65.0%
 Test Distance: 12.226m [K=1.0000]
 Remarks:

LUMINOUS DISTRIBUTION INTENSITY DATA

NAME: FEN18WT-P7-G1 28HZ940 24V210S 1307L05	TYPE:	WEIGHT:
SPEC.:	DIM.: 1307	SERIAL No.:
MFR.:	SUR.:1*0.013	Shielding Angle:

Table--2

UNIT: cd

C(DEG)\ γ (DEG)	285	300	315	330	345														
0	394	394	394	395	395														
5	388	389	389	390	391														
10	380	380	381	383	385														
15	370	370	370	372	375														
20	357	356	357	359	362														
25	342	341	341	343	346														
30	325	323	323	324	328														
35	307	304	303	303	307														
40	288	284	281	280	283														
45	268	262	258	255	258														
50	247	241	234	229	230														
55	227	218	210	202	201														
60	203	192	183	174	171														
65	181	171	157	144	140														
70	162	151	136	116	109														
75	143	131	115	94.8	76.1														
80	125	112	94.5	72.9	50.2														
85	108	95.0	76.7	54.1	31.6														
90	90.4	78.0	60.5	38.7	17.2														
95	67.5	51.1	31.5	14.2	4.01														
100	54.6	41.9	27.1	12.3	2.52														
105	43.5	32.8	20.1	6.43	2.41														
110	32.4	22.9	11.2	3.52	2.72														
115	20.2	11.7	4.77	3.51	3.13														
120	7.97	5.49	4.50	3.68	3.47														
125	5.46	5.22	4.62	3.99	3.80														
130	5.50	5.27	4.77	4.30	4.10														
135	5.61	5.38	5.00	4.56	4.39														
140	5.69	5.56	5.25	4.85	4.66														
145	5.86	5.77	5.52	5.11	4.93														
150	6.08	5.99	5.75	5.37	5.19														
155	6.21	6.10	5.96	5.60	5.45														
160	6.27	6.16	6.07	5.77	5.67														
165	6.34	6.30	6.21	5.98	5.90														
170	6.47	6.43	6.40	6.23	6.18														
175	6.57	6.66	6.65	6.47	6.43														
180	6.82	6.86	6.70	6.64	6.60														

C Range: 0 - 90DEG
 C Interval: 15.0DEG
 Test Speed: HIGH
 Temperature:25.3DEG
 Operators:
 Test Date:2019-04-17

γ Range: 0 - 180DEG
 γ Interval: 1.0DEG
 Test System:EVERFINE GO-2000A_V1 SYSTEM V2.0.362
 Humidity:65.0%
 Test Distance:12.226m [K=1.0000]
 Remarks: