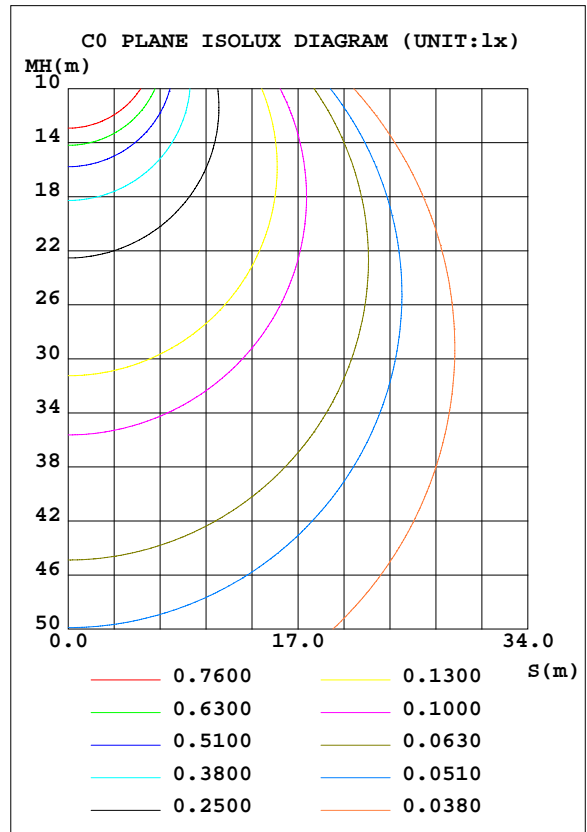
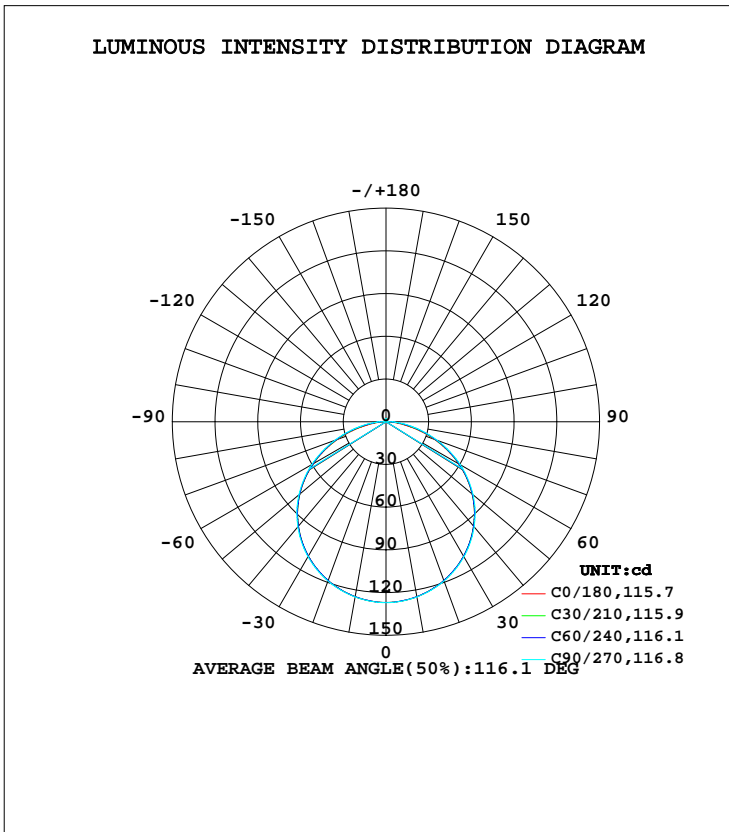


LUMINAIRE PHOTOMETRIC TEST REPORT

NAME: FL	TYPE:	WEIGHT:
SPEC.:LWF-132400W60-LP	DIM.: L=1M	SERIAL No.:
MFR.: LEDWIDE LIGHTING CO., LTD	SUR.:0.008*1	Shielding Angle:

DATA OF LAMP		PHOTOMETRIC DATA Eff: 84.26 lm/W			
MODEL		Imax(cd)	127.0	S/MH(C0/180)	1.28
NOMINAL POWER(W)	4.56	LOR(%)	100.0	S/MH(C90/270)	1.28
RATED VOLTAGE(V)	24	TOTAL FLUX(lm)	384.78	η UP, DN(C0-180)	0.9,49.1
NOMINAL FLUX(lm)	384.778	CIE CLASS	DIRECT	η UP, DN(C180-360)	0.9,49.1
LAMPS INSIDE	1	η up(%)	1.7	CIBSE SHR NOM	1.25
TEST VOLTAGE(V)	24	η down(%)	98.3	CIBSE SHR MAX	1.35



C Range: 0 - 90DEG  
 C Interval: 15.0DEG  
 Test Speed: HIGH  
 Temperature:25.3DEG  
 Operators:  
 Test Date:2019-01-11

γ Range: 0 - 180DEG  
 γ Interval: 1.0DEG  
 Test System:EVERFINE GO-2000A\_V1 SYSTEM V2.0.362  
 Humidity:65.0%  
 Test Distance:12.226m [K=1.0000]  
 Remarks:

ZONAL FLUX DIAGRAM

ZONAL FLUX DIAGRAM:

γ	C0	C45	C90	C135	C180	C225	C270	C315	γ	Φ zone	Φ total	%lum, lamp
10	124.8	124.7	124.9	124.7	124.8	124.7	124.9	124.7	0- 10	12.01	12.01	3.12,3.12
20	118.8	118.7	119.1	118.7	118.8	118.7	119.1	118.7	10- 20	34.51	46.52	12.1,12.1
30	109.1	109.1	109.5	109.1	109.1	109.1	109.5	109.1	20- 30	52.75	99.27	25.8,25.8
40	95.76	95.88	96.34	95.88	95.76	95.88	96.34	95.88	30- 40	64.41	163.7	42.5,42.5
50	79.00	79.16	79.86	79.16	79.00	79.16	79.86	79.16	40- 50	67.83	231.5	60.2,60.2
60	58.89	59.31	60.16	59.31	58.89	59.31	60.16	59.31	50- 60	62.20	293.7	76.3,76.3
70	36.34	37.49	38.34	37.49	36.34	37.49	38.34	37.49	60- 70	47.95	341.7	88.8,88.8
80	13.68	16.09	17.83	16.09	13.68	16.09	17.83	16.09	70- 80	27.73	369.4	96,96
90	0.2154	2.512	3.763	2.512	0.2154	2.512	3.763	2.512	80- 90	8.819	378.2	98.3,98.3
100	0.3594	0.3988	0.7585	0.3988	0.3594	0.3988	0.7585	0.3988	90-100	0.9285	379.1	98.5,98.5
110	0.6564	0.6491	0.8675	0.6491	0.6564	0.6491	0.8675	0.6491	100-110	0.5540	379.7	98.7,98.7
120	0.8988	0.9304	1.008	0.9304	0.8988	0.9304	1.008	0.9304	110-120	0.7847	380.5	98.9,98.9
130	1.118	1.212	1.117	1.212	1.118	1.212	1.117	1.212	120-130	0.9425	381.4	99.1,99.1
140	1.251	1.446	1.376	1.446	1.251	1.446	1.376	1.446	130-140	0.9931	382.4	99.4,99.4
150	1.391	1.642	1.509	1.642	1.391	1.642	1.509	1.642	140-150	0.9254	383.3	99.6,99.6
160	1.540	1.782	1.665	1.782	1.540	1.782	1.665	1.782	150-160	0.7575	384.1	99.8,99.8
170	1.751	1.915	1.861	1.915	1.751	1.915	1.861	1.915	160-170	0.5031	384.6	100,100
180	2.001	2.033	2.111	2.033	2.001	2.033	2.111	2.033	170-180	0.1832	384.8	100,100
DEG	LUMINOUS INTENSITY:cd									UNIT:lm		

Conical surface Flux(90deg): 197.72 lm

%lum = 51.4%  
%lamp = 51.4%

Conical surface Flux(120deg): 293.71 lm

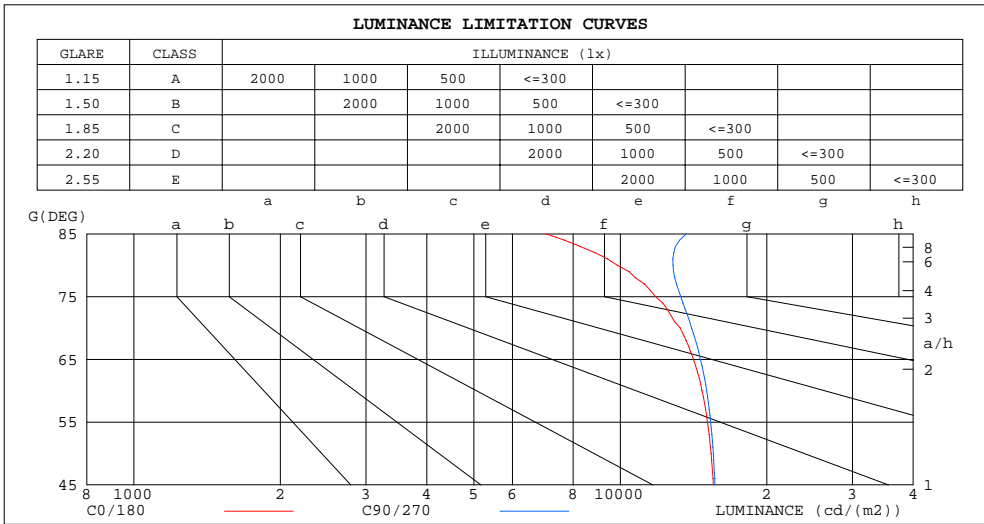
%lum = 76.3%  
%lamp = 76.3%

C Range: 0 - 90DEG  
C Interval: 15.0DEG  
Test Speed: HIGH  
Temperature:25.3DEG  
Operators:  
Test Date:2019-01-11

γ Range: 0 - 180DEG  
γ Interval: 1.0DEG  
Test System:EVERFINE GO-2000A\_V1 SYSTEM V2.0.362  
Humidity:65.0%  
Test Distance:12.226m [K=1.0000]  
Remarks:

LUMINANCE LIMITATION CURVES

NAME: FL	TYPE:	WEIGHT:
SPEC.:LWF-132400W60-LP	DIM.: L=1M	SERIAL No.:
MFR.: LEDWIDE LIGHTING CO., LTD	SUR.:0.008*1	Shielding Angle:



LUMINANCE cd/(m2)		
G( DEG)	C0/180	C90/270
85	7034	13660
80	9848	12833
75	11809	13309
70	13280	14014
65	14135	14611
60	14722	15040
55	15106	15334
50	15363	15530
45	15528	15653

C Range: 0 - 90DEG  
 C Interval: 15.0DEG  
 Test Speed: HIGH  
 Temperature:25.3DEG  
 Operators:  
 Test Date:2019-01-11

γ Range: 0 - 180DEG  
 γ Interval: 1.0DEG  
 Test System:EVERFINE GO-2000A\_V1 SYSTEM V2.0.362  
 Humidity:65.0%  
 Test Distance:12.226m [K=1.0000]  
 Remarks:

WEC AND CCEC

NAME: FL	TYPE:	WEIGHT:
SPEC.:LWF-132400W60-LP	DIM.: L=1M	SERIAL No.:
MFR.: LEDWIDE LIGHTING CO., LTD	SUR.:0.008*1	Shielding Angle:

ρcc	80%			70%			50%			30%			10%			0
ρw	50%	30%	10%	50%	30%	10%	50%	30%	10%	50%	30%	10%	50%	30%	10%	0
ρfc	20%			20%			20%			20%			20%			0
RCR	RCR:Room Cavity Ratio						Wall Exitance Coefficients(WEC)									
0.0																
1.0	.317	.180	.057	.309	.176	.056	.295	.169	.054	.282	.163	.052	.270	.156	.050	
2.0	.296	.162	.050	.289	.159	.049	.277	.154	.048	.265	.149	.047	.254	.144	.045	
3.0	.273	.145	.044	.267	.143	.043	.256	.139	.042	.246	.135	.041	.236	.131	.040	
4.0	.252	.131	.038	.246	.129	.038	.236	.125	.037	.227	.122	.037	.218	.119	.036	
5.0	.232	.118	.034	.228	.117	.034	.219	.114	.034	.210	.111	.033	.203	.108	.033	
6.0	.215	.108	.031	.211	.107	.031	.203	.104	.030	.196	.102	.030	.189	.099	.029	
7.0	.200	.099	.028	.196	.098	.028	.189	.096	.028	.183	.094	.027	.176	.092	.027	
8.0	.187	.091	.026	.183	.090	.026	.177	.088	.025	.171	.087	.025	.165	.085	.025	
9.0	.175	.085	.024	.172	.084	.024	.166	.082	.023	.161	.081	.023	.155	.079	.023	
10.0	.164	.079	.022	.162	.078	.022	.156	.077	.022	.151	.075	.021	.147	.074	.021	

ρcc	80%			70%			50%			30%			10%			0
ρw	50%	30%	10%	50%	30%	10%	50%	30%	10%	50%	30%	10%	50%	30%	10%	0
ρfc	20%			20%			20%			20%			20%			0
RCR	RCR:Room Cavity Ratio						Ceiling Cavity Exitance Coefficients(CCEC)									
0.0	.203	.203	.203	.174	.174	.174	.119	.119	.119	.068	.068	.068	.022	.022	.022	
1.0	.194	.169	.147	.166	.145	.126	.113	.100	.087	.065	.058	.051	.021	.019	.016	
2.0	.186	.145	.111	.159	.125	.096	.109	.086	.067	.063	.050	.039	.020	.016	.013	
3.0	.178	.128	.087	.153	.110	.076	.105	.076	.053	.061	.045	.031	.019	.014	.010	
4.0	.171	.114	.071	.147	.099	.062	.101	.069	.044	.058	.040	.026	.019	.013	.008	
5.0	.163	.104	.060	.140	.090	.052	.097	.063	.037	.056	.037	.022	.018	.012	.007	
6.0	.156	.096	.052	.134	.083	.046	.093	.058	.032	.054	.034	.019	.017	.011	.006	
7.0	.149	.089	.046	.128	.077	.041	.089	.054	.029	.052	.032	.017	.017	.010	.006	
8.0	.143	.083	.042	.123	.072	.037	.085	.051	.026	.050	.030	.015	.016	.010	.005	
9.0	.137	.078	.039	.118	.068	.034	.082	.048	.024	.048	.028	.014	.015	.009	.005	
10.0	.131	.074	.036	.113	.064	.031	.078	.045	.022	.046	.027	.013	.015	.009	.004	

C Range: 0 - 90DEG  
 C Interval: 15.0DEG  
 Test Speed: HIGH  
 Temperature:25.3DEG  
 Operators:  
 Test Date:2019-01-11

γ Range: 0 - 180DEG  
 γ Interval: 1.0DEG  
 Test System:EVERFINE GO-2000A\_V1 SYSTEM V2.0.362  
 Humidity:65.0%  
 Test Distance:12.226m [K=1.0000]  
 Remarks:

UGR(Unified Glare Rating) Table

NAME: FL		TYPE:					WEIGHT:				
SPEC.:LWF-132400W60-LP		DIM.: L=1M					SERIAL No.:				
MFR.: LEDWIDE LIGHTING CO., LTD		SUR.:0.008*1					Shielding Angle:				
ceiling/cavity	0.7	0.7	0.5	0.5	0.3	0.7	0.7	0.5	0.5	0.3	
walls	0.5	0.3	0.5	0.3	0.3	0.5	0.3	0.5	0.3	0.3	
working plane	0.2	0.2	0.2	0.2	0.2	0.2	0.2	0.2	0.2	0.2	
Room dimensions	Viewed crosswise					Viewed endwise					
x = 2H y = 2H	25.6	27.1	25.9	27.3	27.6	25.6	27.1	25.9	27.4	27.6	
3H	27.1	28.5	27.4	28.8	29.0	27.2	28.6	27.5	28.9	29.2	
4H	27.7	29.0	28.0	29.3	29.6	27.9	29.2	28.2	29.5	29.8	
6H	28.0	29.3	28.4	29.6	29.9	28.4	29.6	28.7	29.9	30.2	
8H	28.1	29.3	28.5	29.6	30.0	28.6	29.8	28.9	30.1	30.4	
12H	28.1	29.3	28.5	29.6	30.0	28.7	29.9	29.1	30.2	30.6	
4H 2H	26.2	27.5	26.5	27.8	28.1	26.2	27.6	26.6	27.9	28.1	
3H	27.9	29.1	28.3	29.4	29.7	28.0	29.2	28.4	29.5	29.8	
4H	28.6	29.6	29.0	30.0	30.4	28.8	29.8	29.2	30.2	30.6	
6H	29.1	30.0	29.5	30.4	30.8	29.4	30.4	29.8	30.7	31.2	
8H	29.2	30.1	29.6	30.5	30.9	29.7	30.6	30.1	31.0	31.4	
12H	29.3	30.1	29.7	30.5	30.9	29.9	30.7	30.4	31.1	31.6	
8H 4H	28.9	29.7	29.3	30.1	30.6	29.0	29.9	29.5	30.3	30.7	
6H	29.5	30.2	30.0	30.7	31.1	29.8	30.6	30.3	31.0	31.5	
8H	29.7	30.3	30.2	30.8	31.3	30.2	30.8	30.7	31.3	31.8	
12H	29.8	30.4	30.3	30.9	31.4	30.5	31.1	31.0	31.6	32.1	
12H 4H	28.9	29.7	29.3	30.1	30.5	29.0	29.9	29.5	30.3	30.7	
6H	29.6	30.2	30.0	30.7	31.1	29.9	30.5	30.4	31.0	31.5	
8H	29.8	30.4	30.3	30.8	31.4	30.3	30.8	30.8	31.3	31.8	
Variations with the observer position at spacings:											
S = 1.0H	+ 0.2 / - 0.2					+ 0.1 / - 0.2					
1.5H	+ 0.2 / - 0.3					+ 0.2 / - 0.3					
2.0H	+ 0.2 / - 0.3					+ 0.1 / - 0.3					

CIE Pub.117, 384.8 lm Total Lamp Luminous Flux Correct (8log(F/F0) = -3.3)

C Range: 0 - 90DEG  
 C Interval: 15.0DEG  
 Test Speed: HIGH  
 Temperature:25.3DEG  
 Operators:  
 Test Date:2019-01-11

γ Range: 0 - 180DEG  
 γ Interval: 1.0DEG  
 Test System:EVERFINE GO-2000A\_V1 SYSTEM V2.0.362  
 Humidity:65.0%  
 Test Distance:12.226m [K=1.0000]  
 Remarks:

UTILIZATION FACTORS TABLE

NAME: FL	TYPE:	WEIGHT:
SPEC.:LWF-132400W60-LP	DIM.: L=1M	SERIAL No.:
MFR.: LEDWIDE LIGHTING CO., LTD	SUR.:0.008*1	Shielding Angle:

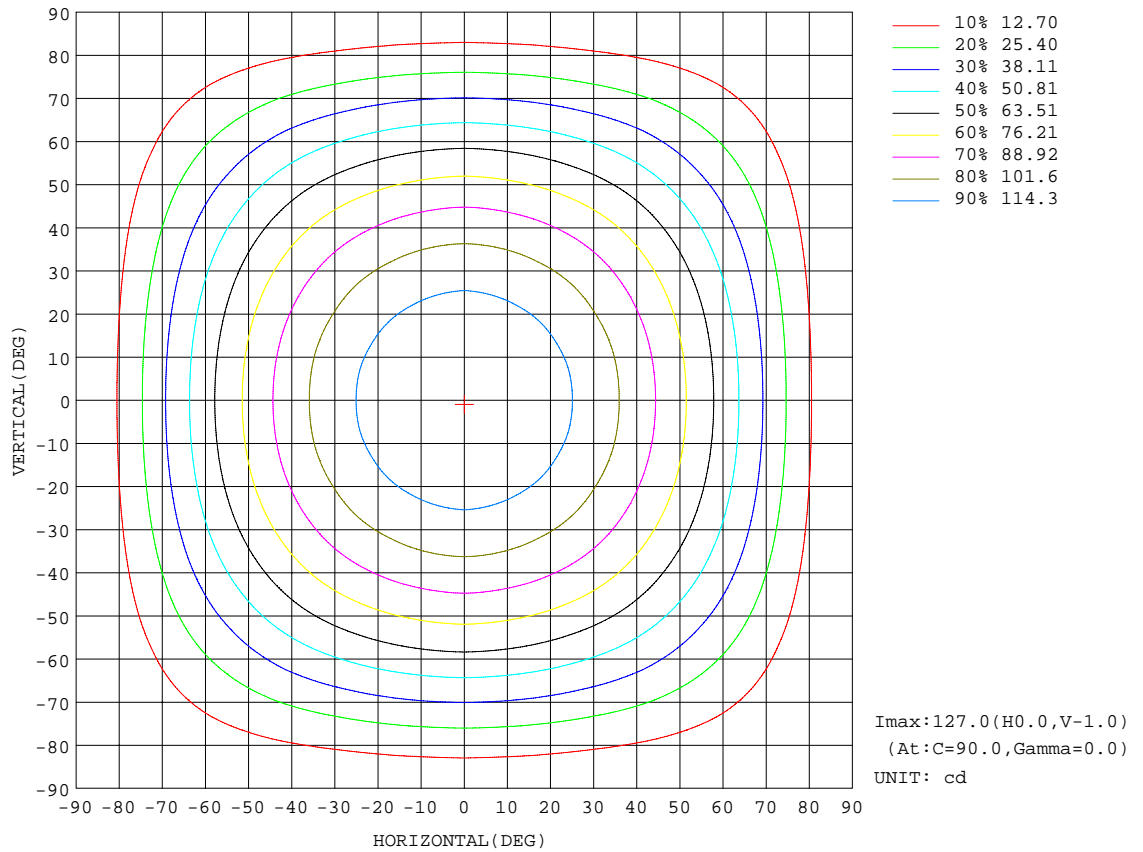
REFLECTANCE										
Ceiling	0.8	0.8	0.8	0.7	0.7	0.7	0.5	0.5	0.5	0
Walls	0.7	0.5	0.3	0.7	0.5	0.3	0.7	0.5	0.3	0
Working plane	0.2	0.2	0.2	0.2	0.2	0.2	0.2	0.2	0.2	0
ROOM INDEX	UTILIZATION FACTORS(PERCENT) $k(RI) \times RCR = 5$									
k = 0.60	56	45	37	55	44	37	54	44	37	31
0.80	66	54	47	65	54	47	63	53	46	39
1.00	75	63	56	73	63	56	71	64	55	48
1.25	82	71	64	80	70	63	77	69	62	55
1.50	87	77	70	85	76	69	82	74	68	60
2.00	94	85	78	92	84	78	88	81	76	68
2.50	98	90	84	96	88	83	92	85	81	72
3.00	101	94	89	99	93	87	95	89	85	76
4.00	105	99	95	103	98	93	98	94	90	81
5.00	108	103	99	105	101	97	100	97	94	84
ROOM INDEX	UF(total)									Direct
According to DIN EN 13032-2 2004			Suspended				SHRNOM = 1.25			

C Range: 0 - 90DEG  
 C Interval: 15.0DEG  
 Test Speed: HIGH  
 Temperature:25.3DEG  
 Operators:  
 Test Date:2019-01-11

$\gamma$  Range: 0 - 180DEG  
 $\gamma$  Interval: 1.0DEG  
 Test System:EVERFINE GO-2000A\_V1 SYSTEM V2.0.362  
 Humidity:65.0%  
 Test Distance:12.226m [K=1.0000]  
 Remarks:

**ISOCANDELA DIAGRAM**

NAME: FL	TYPE:	WEIGHT:
SPEC.:LWF-132400W60-LP	DIM.: L=1M	SERIAL No.:
MFR.: LEDWIDE LIGHTING CO., LTD	SUR.:0.008*1	Shielding Angle:

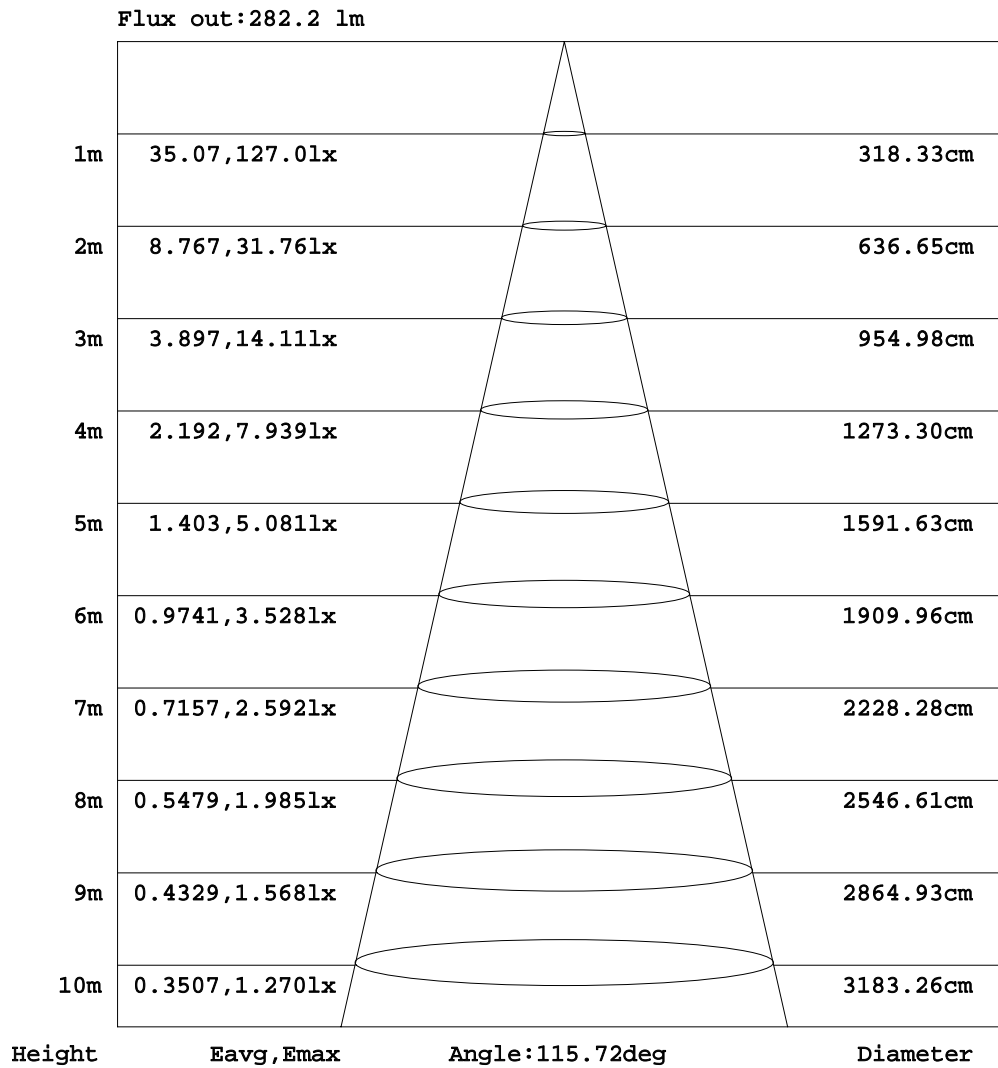


C Range: 0 - 90DEG  
 C Interval: 15.0DEG  
 Test Speed: HIGH  
 Temperature: 25.3DEG  
 Operators:  
 Test Date: 2019-01-11

$\gamma$  Range: 0 - 180DEG  
 $\gamma$  Interval: 1.0DEG  
 Test System: EVERFINE GO-2000A\_V1 SYSTEM V2.0.362  
 Humidity: 65.0%  
 Test Distance: 12.226m [K=1.0000]  
 Remarks:

**AAI Figure**

NAME: FL	TYPE:	WEIGHT:
SPEC.:LWF-132400W60-LP	DIM.: L=1M	SERIAL No.:
MFR.: LEDWIDE LIGHTING CO., LTD	SUR.:0.008*1	Shielding Angle:



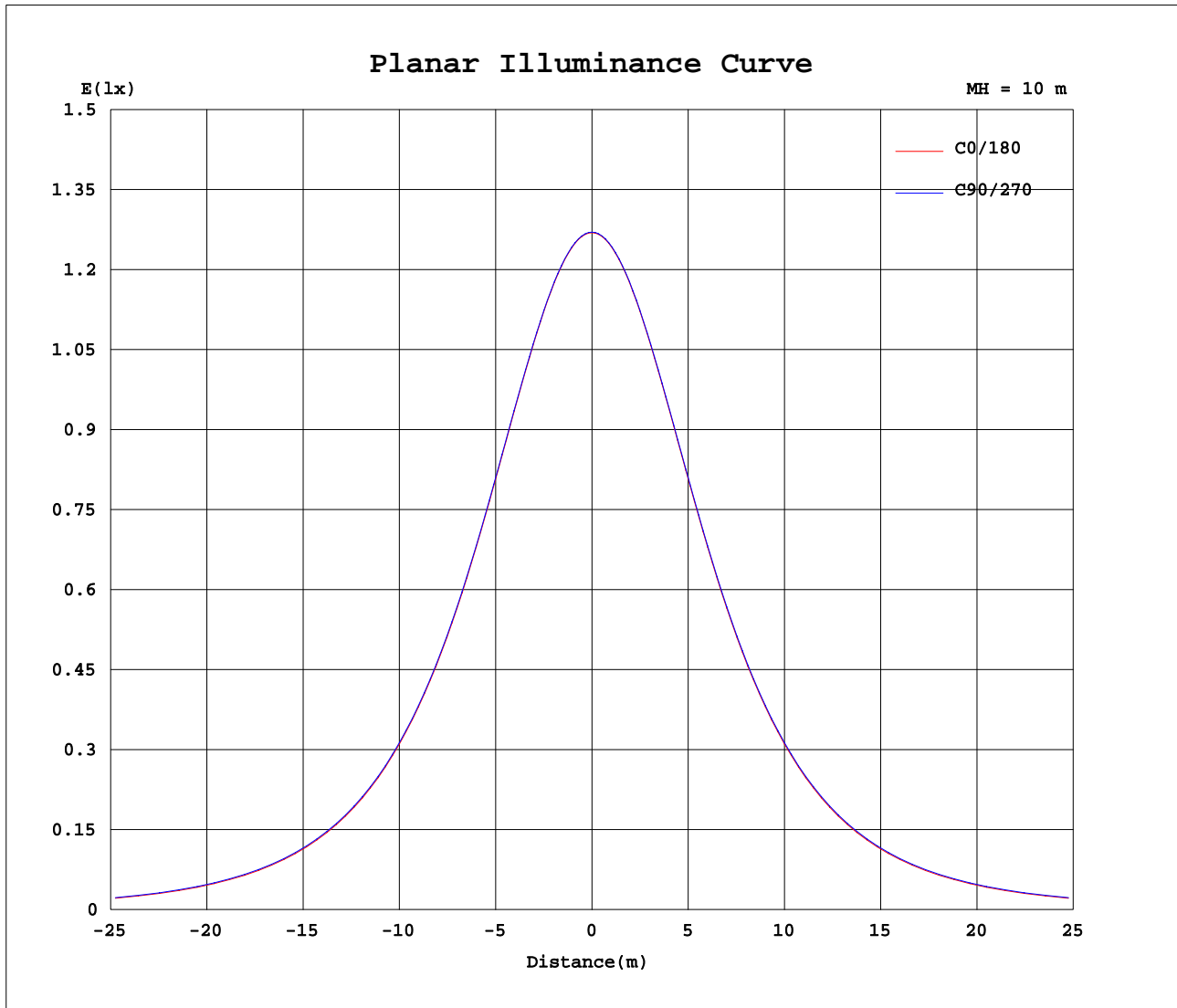
Note:The Curves indicate the illuminated area and the average illumination when the luminaire is at different distance.

C Range: 0 - 90DEG  
 C Interval: 15.0DEG  
 Test Speed: HIGH  
 Temperature:25.3DEG  
 Operators:  
 Test Date:2019-01-11

γ Range: 0 - 180DEG  
 γ Interval: 1.0DEG  
 Test System:EVERFINE GO-2000A\_V1 SYSTEM V2.0.362  
 Humidity:65.0%  
 Test Distance:12.226m [K=1.0000]  
 Remarks:



Planar Illuminance Curve



C Range: 0 - 90DEG  
 C Interval: 15.0DEG  
 Test Speed: HIGH  
 Temperature: 25.3DEG  
 Operators:  
 Test Date: 2019-01-11

$\gamma$  Range: 0 - 180DEG  
 $\gamma$  Interval: 1.0DEG  
 Test System: EVERFINE GO-2000A\_V1 SYSTEM V2.0.362  
 Humidity: 65.0%  
 Test Distance: 12.226m [K=1.0000]  
 Remarks:

LUMINOUS DISTRIBUTION INTENSITY DATA

NAME: FL	TYPE:	WEIGHT:
SPEC.:LWF-132400W60-LP	DIM.: L=1M	SERIAL No.:
MFR.: LEDWIDE LIGHTING CO., LTD	SUR.:0.008*1	Shielding Angle:

Table--1

UNIT: cd

C(DEG) γ (DEG)	0	15	30	45	60	75	90	105	120	135	150	165	180	195	210	225	240	255	270
0	127	127	127	127	127	127	127	127	127	127	127	127	127	127	127	127	127	127	127
5	126	126	126	126	126	126	126	126	126	126	126	126	126	126	126	126	126	126	126
10	125	125	125	125	125	125	125	125	125	125	125	125	125	125	125	125	125	125	125
15	122	122	122	122	122	122	122	122	122	122	122	122	122	122	122	122	122	122	122
20	119	119	119	119	119	119	119	119	119	119	119	119	119	119	119	119	119	119	119
25	114	114	114	114	114	114	115	114	114	114	114	114	114	114	114	114	114	114	115
30	109	109	109	109	109	109	109	109	109	109	109	109	109	109	109	109	109	109	109
35	103	103	103	103	103	103	103	103	103	103	103	103	103	103	103	103	103	103	103
40	95.8	95.9	95.7	95.9	95.7	96.0	96.3	96.0	95.7	95.9	95.7	95.9	95.8	95.9	95.7	95.9	95.7	96.0	96.3
45	87.8	87.9	87.8	87.9	87.9	88.1	88.5	88.1	87.9	87.9	87.8	87.9	87.8	87.9	87.8	87.9	87.9	88.1	88.5
50	79.0	79.1	79.0	79.2	79.2	79.4	79.9	79.4	79.2	79.2	79.0	79.1	79.0	79.1	79.0	79.2	79.2	79.4	79.9
55	69.3	69.5	69.4	69.6	69.6	69.9	70.4	69.9	69.6	69.6	69.4	69.5	69.3	69.5	69.4	69.6	69.6	69.9	70.4
60	58.9	59.0	59.1	59.3	59.3	59.7	60.2	59.7	59.3	59.3	59.1	59.0	58.9	59.0	59.1	59.3	59.3	59.7	60.2
65	47.8	48.2	48.2	48.6	48.5	49.0	49.4	49.0	48.5	48.6	48.2	48.2	47.8	48.2	48.2	48.6	48.5	49.0	49.4
70	36.3	36.7	36.8	37.5	37.5	38.0	38.3	38.0	37.5	37.5	36.8	36.7	36.3	36.7	36.8	37.5	37.5	38.0	38.3
75	24.5	25.1	25.7	26.4	26.6	27.2	27.6	27.2	26.6	26.4	25.7	25.1	24.5	25.1	25.7	26.4	26.6	27.2	27.6
80	13.7	14.0	15.3	16.1	16.6	17.3	17.8	17.3	16.6	16.1	15.3	14.0	13.7	14.0	15.3	16.1	16.6	17.3	17.8
85	4.90	5.90	6.87	7.80	8.32	9.22	9.52	9.22	8.32	7.80	6.87	5.90	4.90	5.90	6.87	7.80	8.32	9.22	9.52
90	0.22	1.44	1.92	2.51	2.93	3.41	3.76	3.41	2.93	2.51	1.92	1.44	0.22	1.44	1.92	2.51	2.93	3.41	3.76
95	0.27	0.30	0.35	0.37	0.57	0.92	1.36	0.92	0.57	0.37	0.35	0.30	0.27	0.30	0.35	0.37	0.57	0.92	1.36
100	0.36	0.41	0.36	0.40	0.42	0.44	0.76	0.44	0.42	0.40	0.36	0.41	0.36	0.41	0.36	0.40	0.42	0.44	0.76
105	0.50	0.53	0.42	0.50	0.44	0.54	0.79	0.54	0.44	0.50	0.42	0.53	0.50	0.53	0.42	0.50	0.44	0.54	0.79
110	0.66	0.68	0.55	0.65	0.58	0.66	0.87	0.66	0.58	0.65	0.55	0.68	0.66	0.68	0.55	0.65	0.58	0.66	0.87
115	0.78	0.83	0.73	0.81	0.73	0.81	0.93	0.81	0.73	0.81	0.73	0.83	0.78	0.83	0.73	0.81	0.73	0.81	0.93
120	0.90	0.97	0.85	0.93	0.88	0.97	1.01	0.97	0.88	0.93	0.85	0.97	0.90	0.97	0.85	0.93	0.88	0.97	1.01
125	1.02	1.08	1.00	1.09	1.02	1.12	1.01	1.12	1.02	1.09	1.00	1.08	1.02	1.08	1.00	1.09	1.02	1.12	1.01
130	1.12	1.19	1.13	1.21	1.16	1.25	1.12	1.25	1.16	1.21	1.13	1.19	1.12	1.19	1.13	1.21	1.16	1.25	1.12
135	1.17	1.27	1.23	1.34	1.29	1.38	1.24	1.38	1.29	1.34	1.23	1.27	1.17	1.27	1.23	1.34	1.29	1.38	1.24
140	1.25	1.35	1.31	1.45	1.40	1.49	1.38	1.49	1.40	1.45	1.31	1.35	1.25	1.35	1.31	1.45	1.40	1.49	1.38
145	1.32	1.45	1.41	1.55	1.52	1.58	1.41	1.58	1.52	1.55	1.41	1.45	1.32	1.45	1.41	1.55	1.52	1.58	1.41
150	1.39	1.55	1.49	1.64	1.62	1.65	1.51	1.65	1.62	1.64	1.49	1.55	1.39	1.55	1.49	1.64	1.62	1.65	1.51
155	1.49	1.63	1.64	1.73	1.66	1.71	1.60	1.71	1.66	1.73	1.64	1.63	1.49	1.63	1.64	1.73	1.66	1.71	1.60
160	1.54	1.70	1.65	1.78	1.76	1.77	1.67	1.77	1.76	1.78	1.65	1.70	1.54	1.70	1.65	1.78	1.76	1.77	1.67
165	1.65	1.77	1.75	1.84	1.78	1.83	1.77	1.83	1.78	1.84	1.75	1.77	1.65	1.77	1.75	1.84	1.78	1.83	1.77
170	1.75	1.86	1.82	1.92	1.87	1.91	1.86	1.91	1.87	1.92	1.86	1.75	1.86	1.82	1.92	1.87	1.91	1.86	1.86
175	1.88	1.95	1.90	2.00	1.93	1.99	1.95	1.99	1.93	2.00	1.90	1.95	1.88	1.95	1.90	2.00	1.93	1.99	1.95
180	2.00	2.01	2.02	2.03	2.03	2.05	2.11	2.05	2.03	2.03	2.02	2.01	2.00	2.01	2.02	2.03	2.03	2.05	2.11

C Range: 0 - 90DEG  
 C Interval: 15.0DEG  
 Test Speed: HIGH  
 Temperature:25.3DEG  
 Operators:  
 Test Date:2019-01-11

γ Range: 0 - 180DEG  
 γ Interval: 1.0DEG  
 Test System:EVERFINE GO-2000A\_V1 SYSTEM V2.0.362  
 Humidity:65.0%  
 Test Distance:12.226m [K=1.0000]  
 Remarks:

LUMINOUS DISTRIBUTION INTENSITY DATA

NAME: FL	TYPE:	WEIGHT:
SPEC.:LWF-132400W60-LP	DIM.: L=1M	SERIAL No.:
MFR.: LEDWIDE LIGHTING CO., LTD	SUR.:0.008*1	Shielding Angle:

Table--2

UNIT: cd

C( DEG) γ (DEG)	285	300	315	330	345														
0	127	127	127	127	127														
5	126	126	126	126	126														
10	125	125	125	125	125														
15	122	122	122	122	122														
20	119	119	119	119	119														
25	114	114	114	114	114														
30	109	109	109	109	109														
35	103	103	103	103	103														
40	96.0	95.7	95.9	95.7	95.9														
45	88.1	87.9	87.9	87.8	87.9														
50	79.4	79.2	79.2	79.0	79.1														
55	69.9	69.6	69.6	69.4	69.5														
60	59.7	59.3	59.3	59.1	59.0														
65	49.0	48.5	48.6	48.2	48.2														
70	38.0	37.5	37.5	36.8	36.7														
75	27.2	26.6	26.4	25.7	25.1														
80	17.3	16.6	16.1	15.3	14.0														
85	9.22	8.32	7.80	6.87	5.90														
90	3.41	2.93	2.51	1.92	1.44														
95	0.92	0.57	0.37	0.35	0.30														
100	0.44	0.42	0.40	0.36	0.41														
105	0.54	0.44	0.50	0.42	0.53														
110	0.66	0.58	0.65	0.55	0.68														
115	0.81	0.73	0.81	0.73	0.83														
120	0.97	0.88	0.93	0.85	0.97														
125	1.12	1.02	1.09	1.00	1.08														
130	1.25	1.16	1.21	1.13	1.19														
135	1.38	1.29	1.34	1.23	1.27														
140	1.49	1.40	1.45	1.31	1.35														
145	1.58	1.52	1.55	1.41	1.45														
150	1.65	1.62	1.64	1.49	1.55														
155	1.71	1.66	1.73	1.64	1.63														
160	1.77	1.76	1.78	1.65	1.70														
165	1.83	1.78	1.84	1.75	1.77														
170	1.91	1.87	1.92	1.82	1.86														
175	1.99	1.93	2.00	1.90	1.95														
180	2.05	2.03	2.03	2.02	2.01														

C Range: 0 - 90DEG  
 C Interval: 15.0DEG  
 Test Speed: HIGH  
 Temperature:25.3DEG  
 Operators:  
 Test Date:2019-01-11

γ Range: 0 - 180DEG  
 γ Interval: 1.0DEG  
 Test System:EVERFINE GO-2000A\_V1 SYSTEM V2.0.362  
 Humidity:65.0%  
 Test Distance:12.226m [K=1.0000]  
 Remarks: