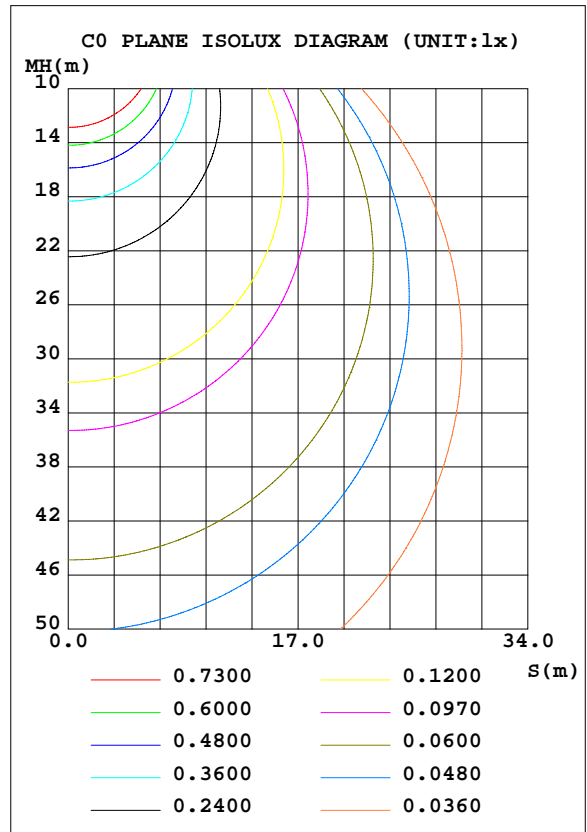
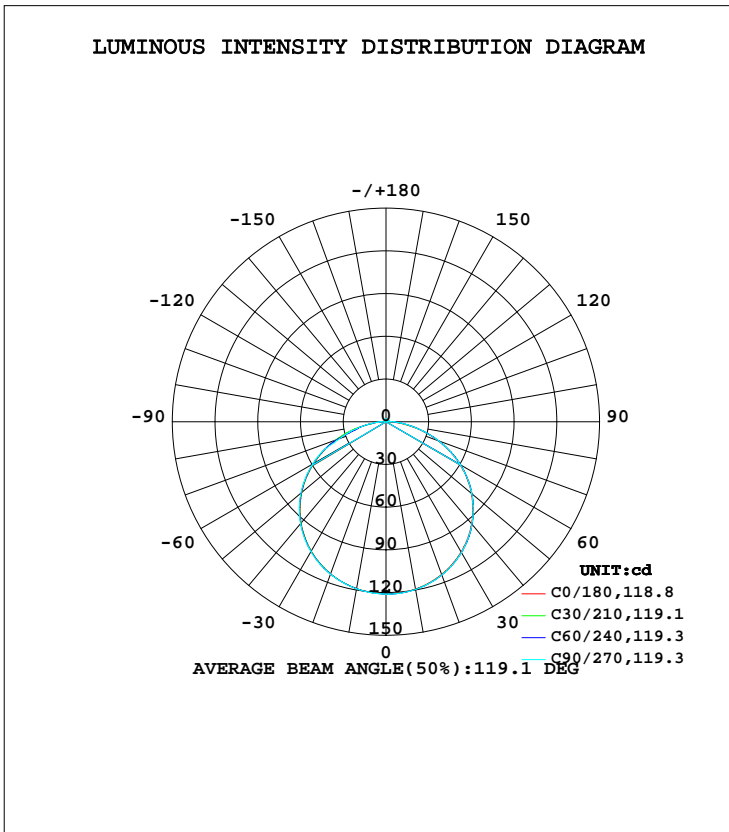


LUMINAIRE PHOTOMETRIC TEST REPORT

NAME: 软灯条	TYPE:	WEIGHT:
SPEC.: LWF-S-102400W60	DIM.: 1	SERIAL No.:
MFR.: LEDWIDE LIGHTING CO., LTD	SUR.:0.006*1	Shielding Angle:

DATA OF LAMP		PHOTOMETRIC DATA Eff: 81.96 lm/W			
MODE: 528	24V60灯 4000K R 1M	I <sub>max</sub> (cd)	121.2	S/MH(C0/180)	1.29
NOMINAL POWER(W)	4.64	LOR(%)	100.0	S/MH(C90/270)	1.29
RATED VOLTAGE(V)	24	TOTAL FLUX(lm)	380.37	η UP, DN(C0-180)	1.1, 49.5
NOMINAL FLUX(lm)	380.372	CIE CLASS	DIRECT	η UP, DN(C180-360)	0.8, 48.6
LAMPS INSIDE	1	η up(%)	1.9	CIBSE SHR NOM	1.50
TEST VOLTAGE(V)	24	η down(%)	98.1	CIBSE SHR MAX	1.50



C Range: 0 - 360DEG  
 C Interval: 15.0DEG  
 Test Speed: HIGH  
 Temperature: 25.3DEG  
 Operators:  
 Test Date: 2019-12-19

γ Range: 0 - 180DEG  
 γ Interval: 1.0DEG  
 Test System: EVERFINE GO-2000A\_V1 SYSTEM V2.0.362  
 Humidity: 65.0%  
 Test Distance: 12.586m [K=1.0000]  
 Remarks:

ZONAL FLUX DIAGRAM

ZONAL FLUX DIAGRAM:

γ	C0	C45	C90	C135	C180	C225	C270	C315	γ	Φ zone	Φ total	%lum,lamp
10	119.3	119.5	119.6	119.5	119.0	119.1	119.1	119.4	0- 10	11.47	11.47	3.02,3.02
20	114.2	114.6	114.6	114.4	113.8	113.7	114.0	114.1	10- 20	33.10	44.57	11.7,11.7
30	105.6	106.1	106.0	105.8	105.0	105.0	105.4	105.4	20- 30	50.87	95.44	25.1,25.1
40	93.61	94.32	93.98	93.78	92.81	92.89	93.39	93.45	30- 40	62.56	158.0	41.5,41.5
50	78.36	79.01	78.70	78.23	77.17	77.51	77.97	78.20	40- 50	66.52	224.5	59,59
60	59.91	60.63	60.24	59.60	58.48	58.85	59.51	59.80	50- 60	61.88	286.4	75.3,75.3
70	38.82	39.75	39.35	38.47	37.22	37.65	34.85	38.76	60- 70	48.64	335.0	88.1,88.1
80	17.19	18.63	18.50	17.18	15.74	13.92	15.29	15.33	70- 80	28.48	363.5	95.6,95.6
90	1.925	4.249	4.569	2.490	1.347	2.445	2.721	2.619	80- 90	9.596	373.1	98.1,98.1
100	0.4514	0.5096	0.5104	0.5178	0.4274	0.4189	0.5503	0.4436	90-100	1.218	374.3	98.4,98.4
110	0.7880	0.8955	0.8896	0.8874	0.6984	0.5830	0.6736	0.5993	100-110	0.8391	375.2	98.6,98.6
120	1.043	1.199	1.166	1.150	0.9284	0.8455	0.8874	0.8129	110-120	0.8669	376.1	98.9,98.9
130	1.216	1.363	1.495	1.306	1.150	1.043	1.101	1.035	120-130	0.9986	377.1	99.1,99.1
140	1.306	1.495	1.692	1.462	1.372	1.290	1.273	1.224	130-140	1.011	378.1	99.4,99.4
150	1.405	1.610	1.717	1.577	1.594	1.487	1.503	1.421	140-150	0.9184	379.0	99.6,99.6
160	1.462	1.692	1.709	1.667	1.750	1.618	1.766	1.659	150-160	0.7378	379.7	99.8,99.8
170	1.585	1.758	1.733	1.700	1.848	1.798	1.955	1.807	160-170	0.4828	380.2	100,100
180	1.840	1.865	1.980	1.865	1.848	1.832	1.963	1.856	170-180	0.1719	380.4	100,100
DEG	LUMINOUS INTENSITY:cd									UNIT:lm		

Conical surface Flux(90deg): 191.3 lm

%lum = 50.3%  
%lamp = 50.3%

Conical surface Flux(120deg): 286.41 lm

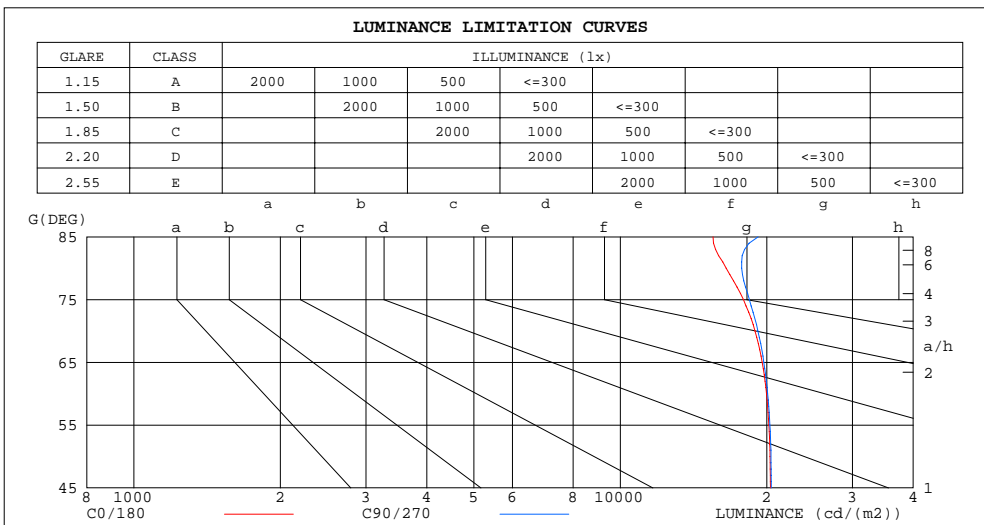
%lum = 75.3%  
%lamp = 75.3%

C Range: 0 - 360DEG  
C Interval: 15.0DEG  
Test Speed: HIGH  
Temperature:25.3DEG  
Operators:  
Test Date:2019-12-19

γ Range: 0 - 180DEG  
γ Interval: 1.0DEG  
Test System:EVERFINE GO-2000A\_V1 SYSTEM V2.0.362  
Humidity:65.0%  
Test Distance:12.586m [K=1.0000]  
Remarks:

LUMINANCE LIMITATION CURVES

NAME: 软灯条	TYPE:	WEIGHT:
SPEC.: LWF-S-102400W60	DIM.: 1	SERIAL No.:
MFR.: LEDWIDE LIGHTING CO., LTD	SUR.:0.006*1	Shielding Angle:



LUMINANCE cd/(m2)		
G(DEG)	C0/180	C90/270
85	15510	19198
80	16498	17758
75	17916	18418
70	18916	19176
65	19569	19721
60	19969	20082
55	20203	20296
50	20317	20406
45	20356	20439

C Range: 0 - 360DEG  
 C Interval: 15.0DEG  
 Test Speed: HIGH  
 Temperature:25.3DEG  
 Operators:  
 Test Date:2019-12-19

γ Range: 0 - 180DEG  
 γ Interval: 1.0DEG  
 Test System:EVERFINE GO-2000A\_V1 SYSTEM V2.0.362  
 Humidity:65.0%  
 Test Distance:12.586m [K=1.0000]  
 Remarks:

WEC AND CCEC

NAME: 软灯条	TYPE:	WEIGHT:
SPEC.: LWF-S-102400W60	DIM.: 1	SERIAL No.:
MFR.: LEDWIDE LIGHTING CO., LTD	SUR.:0.006*1	Shielding Angle:

ρcc	80%			70%			50%			30%			10%			0
ρw	50%	30%	10%	50%	30%	10%	50%	30%	10%	50%	30%	10%	50%	30%	10%	0
ρfc	20%			20%			20%			20%			20%			0
RCR	RCR:Room Cavity Ratio						Wall Exitance Coefficients(WEC)									
0.0																
1.0	.322	.183	.058	.314	.179	.057	.300	.172	.055	.287	.165	.053	.274	.159	.051	
2.0	.300	.164	.050	.293	.161	.050	.280	.156	.048	.269	.151	.047	.258	.146	.046	
3.0	.276	.147	.044	.270	.145	.044	.259	.140	.043	.248	.136	.042	.238	.132	.041	
4.0	.254	.132	.039	.249	.130	.038	.238	.126	.038	.229	.123	.037	.220	.120	.036	
5.0	.234	.119	.035	.229	.118	.034	.220	.115	.034	.212	.112	.033	.204	.109	.033	
6.0	.217	.109	.031	.212	.107	.031	.204	.105	.030	.197	.102	.030	.190	.100	.030	
7.0	.201	.100	.028	.198	.098	.028	.190	.096	.028	.183	.094	.027	.177	.092	.027	
8.0	.188	.092	.026	.184	.091	.026	.178	.089	.025	.172	.087	.025	.166	.085	.025	
9.0	.176	.085	.024	.173	.084	.024	.167	.082	.023	.161	.081	.023	.156	.079	.023	
10.0	.165	.079	.022	.162	.078	.022	.157	.077	.022	.152	.075	.021	.147	.074	.021	

ρcc	80%			70%			50%			30%			10%			0
ρw	50%	30%	10%	50%	30%	10%	50%	30%	10%	50%	30%	10%	50%	30%	10%	0
ρfc	20%			20%			20%			20%			20%			0
RCR	RCR:Room Cavity Ratio						Ceiling Cavity Exitance Coefficients(CCEC)									
0.0	.205	.205	.205	.175	.175	.175	.120	.120	.120	.069	.069	.069	.022	.022	.022	
1.0	.196	.171	.148	.168	.146	.127	.115	.101	.088	.066	.058	.051	.021	.019	.017	
2.0	.188	.147	.112	.161	.126	.097	.110	.087	.067	.064	.051	.039	.020	.016	.013	
3.0	.180	.129	.088	.155	.111	.077	.106	.077	.054	.061	.045	.032	.020	.015	.010	
4.0	.173	.116	.072	.148	.100	.063	.102	.070	.044	.059	.041	.026	.019	.013	.009	
5.0	.165	.106	.062	.142	.091	.054	.098	.064	.038	.057	.037	.022	.018	.012	.007	
6.0	.158	.097	.054	.136	.084	.047	.094	.059	.033	.054	.035	.020	.018	.011	.006	
7.0	.151	.091	.048	.130	.078	.042	.090	.055	.030	.052	.032	.018	.017	.011	.006	
8.0	.145	.085	.043	.125	.074	.038	.086	.052	.027	.050	.030	.016	.016	.010	.005	
9.0	.139	.080	.040	.119	.069	.035	.083	.049	.025	.048	.029	.015	.016	.009	.005	
10.0	.133	.076	.037	.115	.066	.033	.080	.046	.023	.046	.027	.014	.015	.009	.005	

C Range: 0 - 360DEG  
 C Interval: 15.0DEG  
 Test Speed: HIGH  
 Temperature:25.3DEG  
 Operators:  
 Test Date:2019-12-19

γ Range: 0 - 180DEG  
 γ Interval: 1.0DEG  
 Test System:EVERFINE GO-2000A\_V1 SYSTEM V2.0.362  
 Humidity:65.0%  
 Test Distance:12.586m [K=1.0000]  
 Remarks:

UGR(Unified Glare Rating) Table

NAME: 软灯条	TYPE:	WEIGHT:
SPEC.: LWF-S-102400W60	DIM.: 1	SERIAL No.:
MFR.: LEDWIDE LIGHTING CO., LTD	SUR.:0.006*1	Shielding Angle:

ceiling/cavity	0.7	0.7	0.5	0.5	0.3	0.7	0.7	0.5	0.5	0.3
walls	0.5	0.3	0.5	0.3	0.3	0.5	0.3	0.5	0.3	0.3
working plane	0.2	0.2	0.2	0.2	0.2	0.2	0.2	0.2	0.2	0.2
Room dimensions	Viewed crosswise					Viewed endwise				
x = 2H y = 2H	26.7	28.2	27.0	28.5	28.7	26.7	28.3	27.0	28.5	28.7
3H	28.4	29.8	28.7	30.0	30.3	28.4	29.8	28.7	30.1	30.4
4H	29.0	30.4	29.4	30.7	31.0	29.1	30.4	29.4	30.7	31.0
6H	29.5	30.8	29.9	31.1	31.4	29.6	30.9	30.0	31.2	31.5
8H	29.7	30.9	30.1	31.2	31.6	29.8	31.1	30.2	31.4	31.7
12H	29.8	31.0	30.2	31.3	31.7	30.0	31.2	30.4	31.5	31.9
4H 2H	27.4	28.7	27.7	29.0	29.3	27.4	28.7	27.7	29.0	29.3
3H	29.2	30.4	29.6	30.7	31.1	29.2	30.4	29.6	30.7	31.1
4H	30.0	31.1	30.4	31.4	31.8	30.1	31.1	30.5	31.5	31.9
6H	30.7	31.6	31.1	32.0	32.4	30.8	31.7	31.2	32.1	32.5
8H	30.9	31.8	31.3	32.2	32.6	31.0	31.9	31.5	32.3	32.8
12H	31.0	31.9	31.5	32.3	32.7	31.3	32.1	31.7	32.5	33.0
8H 4H	30.3	31.2	30.8	31.6	32.1	30.4	31.3	30.8	31.7	32.1
6H	31.1	31.9	31.6	32.3	32.8	31.2	32.0	31.7	32.4	32.9
8H	31.5	32.1	32.0	32.6	33.1	31.6	32.3	32.1	32.7	33.2
12H	31.7	32.3	32.2	32.8	33.3	32.0	32.6	32.5	33.0	33.6
12H 4H	30.4	31.2	30.8	31.6	32.0	30.4	31.2	30.9	31.6	32.1
6H	31.2	31.9	31.7	32.3	32.8	31.3	32.0	31.8	32.4	32.9
8H	31.6	32.2	32.1	32.7	33.2	31.8	32.3	32.3	32.8	33.3
Variations with the observer position at spacings:										
S = 1.0H	+ 0.1 / - 0.2					+ 0.1 / - 0.2				
1.5H	+ 0.2 / - 0.3					+ 0.2 / - 0.3				
2.0H	+ 0.2 / - 0.4					+ 0.2 / - 0.4				

CIE Pub.117, 380.4 lm Total Lamp Luminous Flux Correct (8log(F/F0) = -3.4)

C Range: 0 - 360DEG  
 C Interval: 15.0DEG  
 Test Speed: HIGH  
 Temperature:25.3DEG  
 Operators:  
 Test Date:2019-12-19

γ Range: 0 - 180DEG  
 γ Interval: 1.0DEG  
 Test System:EVERFINE GO-2000A\_V1 SYSTEM V2.0.362  
 Humidity:65.0%  
 Test Distance:12.586m [K=1.0000]  
 Remarks:

UTILIZATION FACTORS TABLE

NAME: 软灯条	TYPE:	WEIGHT:
SPEC.: LWF-S-102400W60	DIM.: 1	SERIAL No.:
MFR.: LEDWIDE LIGHTING CO., LTD	SUR.:0.006*1	Shielding Angle:

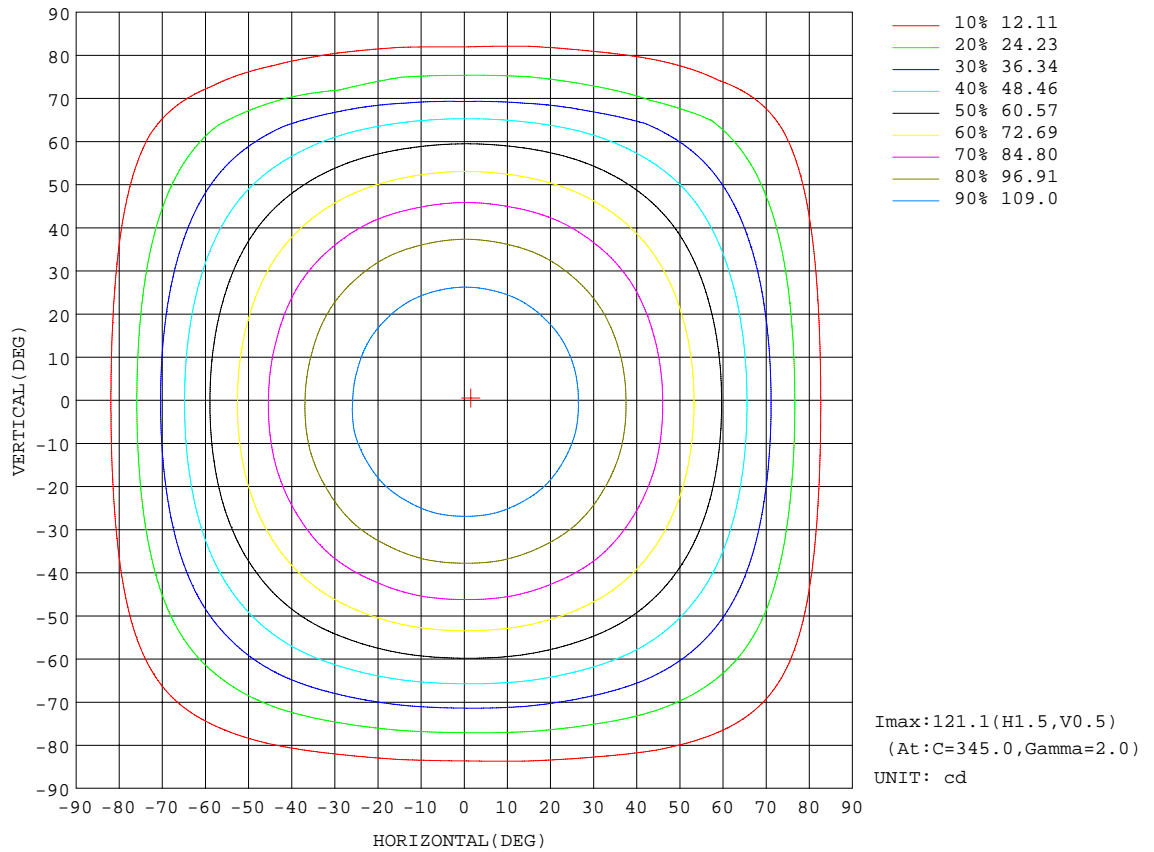
REFLECTANCE										
Ceiling	0.8	0.8	0.8	0.7	0.7	0.7	0.5	0.5	0.5	0
Walls	0.7	0.5	0.3	0.7	0.5	0.3	0.7	0.5	0.3	0
Working plane	0.2	0.2	0.2	0.2	0.2	0.2	0.2	0.2	0.2	0
ROOM INDEX	UTILIZATION FACTORS(PERCENT) $k(RI) \times RCR = 5$									
k = 0.60	56	44	37	55	44	37	54	43	36	30
0.80	66	54	46	65	53	46	63	52	46	38
1.00	74	63	55	73	62	55	70	63	54	47
1.25	81	70	63	80	70	63	77	68	62	54
1.50	86	76	69	85	75	68	81	73	67	59
2.00	93	84	78	91	83	77	88	81	75	67
2.50	97	89	83	95	88	82	91	85	80	71
3.00	101	94	88	99	92	87	94	89	84	75
4.00	105	99	94	102	97	93	98	93	90	80
5.00	108	102	98	105	100	96	100	96	93	83
ROOM INDEX	UF(total)									Direct
According to DIN EN 13032-2 2004			Suspended				SHRNOM = 1.25			

C Range: 0 - 360DEG  
 C Interval: 15.0DEG  
 Test Speed: HIGH  
 Temperature:25.3DEG  
 Operators:  
 Test Date:2019-12-19

$\gamma$  Range: 0 - 180DEG  
 $\gamma$  Interval: 1.0DEG  
 Test System:EVERFINE GO-2000A\_V1 SYSTEM V2.0.362  
 Humidity:65.0%  
 Test Distance:12.586m [K=1.0000]  
 Remarks:

ISOCANDELA DIAGRAM

NAME: 软灯条	TYPE:	WEIGHT:
SPEC.: LWF-S-102400W60	DIM.: 1	SERIAL No.:
MFR.: LEDWIDE LIGHTING CO., LTD	SUR.:0.006*1	Shielding Angle:

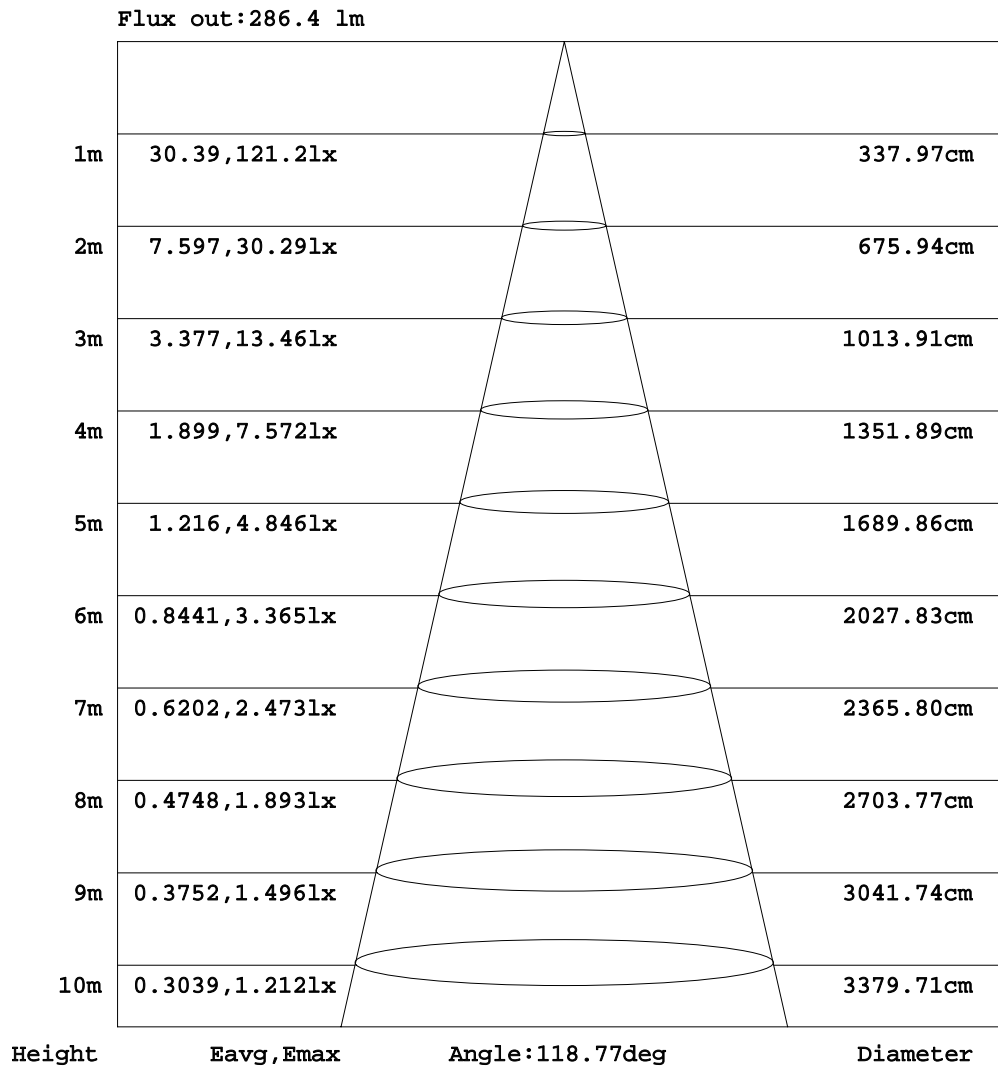


C Range: 0 - 360DEG  
 C Interval: 15.0DEG  
 Test Speed: HIGH  
 Temperature: 25.3DEG  
 Operators:  
 Test Date: 2019-12-19

γ Range: 0 - 180DEG  
 γ Interval: 1.0DEG  
 Test System: EVERFINE GO-2000A\_V1 SYSTEM V2.0.362  
 Humidity: 65.0%  
 Test Distance: 12.586m [K=1.0000]  
 Remarks:

AAI Figure

NAME: 软灯条	TYPE:	WEIGHT:
SPEC.: LWF-S-102400W60	DIM.: 1	SERIAL No.:
MFR.: LEDWIDE LIGHTING CO., LTD	SUR.:0.006*1	Shielding Angle:



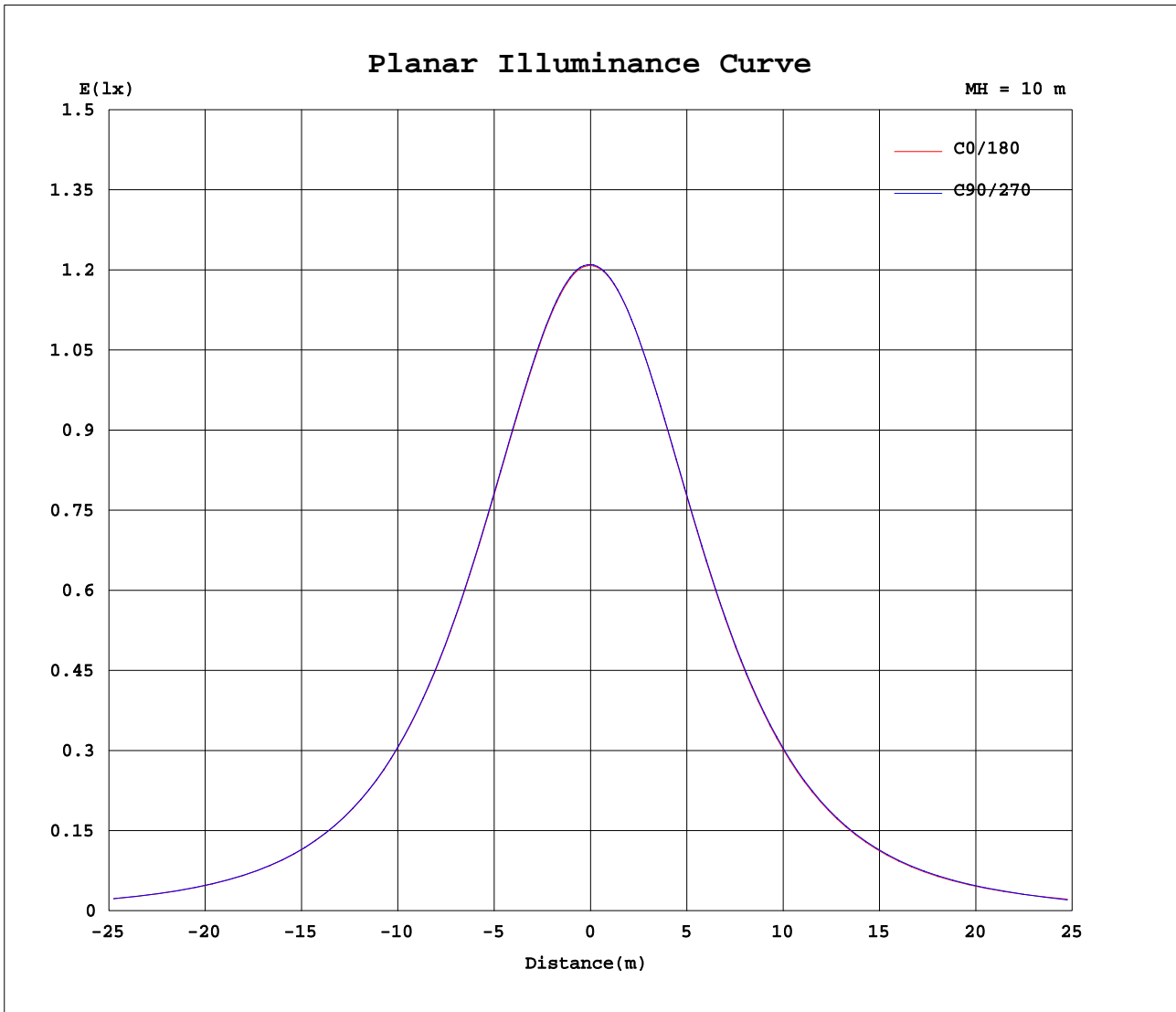
Note:The Curves indicate the illuminated area and the average illumination when the luminaire is at different distance.

C Range: 0 - 360DEG  
 C Interval: 15.0DEG  
 Test Speed: HIGH  
 Temperature:25.3DEG  
 Operators:  
 Test Date:2019-12-19

γ Range: 0 - 180DEG  
 γ Interval: 1.0DEG  
 Test System:EVERFINE GO-2000A\_V1 SYSTEM V2.0.362  
 Humidity:65.0%  
 Test Distance:12.586m [K=1.0000]  
 Remarks:



Planar Illuminance Curve



C Range: 0 - 360DEG  
 C Interval: 15.0DEG  
 Test Speed: HIGH  
 Temperature: 25.3DEG  
 Operators:  
 Test Date: 2019-12-19

$\gamma$  Range: 0 - 180DEG  
 $\gamma$  Interval: 1.0DEG  
 Test System: EVERFINE GO-2000A\_V1 SYSTEM V2.0.362  
 Humidity: 65.0%  
 Test Distance: 12.586m [K=1.0000]  
 Remarks:

LUMINOUS DISTRIBUTION INTENSITY DATA

NAME: 软灯条	TYPE:	WEIGHT:
SPEC.: LWF-S-102400W60	DIM.: 1	SERIAL No.:
MFR.: LEDWIDE LIGHTING CO., LTD	SUR.:0.006*1	Shielding Angle:

Table--1

UNIT: cd

C( DEG) γ (DEG)	0	15	30	45	60	75	90	105	120	135	150	165	180	195	210	225	240	255	270
0	121	121	121	121	121	121	121	121	121	121	121	121	121	121	121	121	121	121	121
5	121	121	121	121	121	121	121	121	121	121	121	121	120	120	120	120	120	121	121
10	119	119	119	120	120	120	120	120	120	120	120	119	119	119	119	119	119	119	119
15	117	117	117	117	117	118	118	118	117	117	117	117	117	117	117	117	117	117	117
20	114	114	114	115	115	115	115	115	114	114	114	114	114	114	114	114	114	114	114
25	110	111	111	111	111	111	111	111	111	111	110	110	110	110	110	110	110	110	110
30	106	106	106	106	106	106	106	106	106	106	106	106	105	105	105	105	105	105	105
35	100	100	100	101	101	101	100	101	100	100	99.9	99.9	99.3	99.1	99.4	99.4	99.6	99.6	99.8
40	93.6	94.1	94.0	94.3	94.1	94.3	94.0	94.1	93.7	93.8	93.4	93.4	92.8	92.6	93.0	92.9	93.2	93.1	93.4
45	86.4	86.9	86.8	87.1	86.9	87.0	86.7	86.8	86.4	86.5	86.0	86.0	85.4	85.2	85.7	85.5	85.9	85.8	86.1
50	78.4	78.7	78.8	79.0	78.9	78.9	78.7	78.6	78.3	78.2	77.9	77.7	77.2	77.2	77.4	77.5	77.7	77.8	78.0
55	69.5	69.9	70.0	70.2	70.1	70.1	69.8	69.8	69.4	69.3	68.9	68.7	68.2	68.2	68.5	68.6	68.8	68.9	69.1
60	59.9	60.4	60.4	60.6	60.5	60.6	60.2	60.2	59.7	59.6	59.1	59.0	58.5	58.5	58.8	58.9	59.2	59.2	59.5
65	49.6	50.1	50.1	50.4	50.2	50.4	50.0	49.9	49.5	49.3	48.7	48.5	48.1	48.1	48.5	48.5	48.9	48.9	49.3
70	38.8	39.4	39.4	39.8	39.5	39.8	39.4	39.3	38.7	38.5	37.8	37.6	37.2	37.2	37.6	37.7	36.1	35.2	34.8
75	27.8	28.4	28.6	28.9	28.8	29.0	28.6	28.5	27.9	27.6	26.8	26.5	26.2	26.2	26.7	24.9	22.6	25.0	24.9
80	17.2	17.8	18.2	18.6	18.7	18.8	18.5	18.3	17.6	17.2	16.4	16.0	15.7	15.7	15.2	13.9	14.9	15.7	15.3
85	8.11	8.69	9.30	10.1	10.1	10.5	10.0	9.91	9.00	8.54	7.58	7.30	7.05	7.06	7.55	7.38	7.54	7.69	7.67
90	1.92	2.45	3.15	4.25	4.65	4.82	4.57	3.70	2.67	2.49	2.10	1.76	1.35	1.77	2.14	2.45	2.61	2.54	2.72
95	0.30	0.41	0.86	2.01	2.70	2.73	2.69	1.19	0.58	0.43	0.45	0.42	0.33	0.34	0.37	0.56	0.57	0.72	0.93
100	0.45	0.55	0.49	0.51	0.51	0.53	0.51	0.54	1.17	0.52	0.45	0.56	0.43	0.39	0.46	0.42	0.49	0.49	0.55
105	0.64	0.73	0.63	0.71	1.92	2.59	2.51	2.34	1.55	0.69	0.65	0.73	0.57	0.50	0.57	0.51	0.59	0.53	0.56
110	0.79	0.85	0.79	0.90	0.83	0.89	0.89	0.86	0.80	0.89	0.79	0.88	0.70	0.62	0.70	0.58	0.69	0.58	0.67
115	0.90	0.99	0.94	1.06	0.99	1.10	0.99	1.04	0.94	1.03	0.92	1.01	0.82	0.77	0.81	0.70	0.80	0.70	0.77
120	1.04	1.13	1.04	1.20	1.17	1.27	1.17	1.22	1.09	1.15	1.05	1.13	0.93	0.90	0.92	0.85	0.90	0.81	0.89
125	1.13	1.22	1.15	1.29	1.28	1.41	1.34	1.40	1.21	1.26	1.16	1.26	1.04	1.03	1.08	0.93	1.00	0.91	1.00
130	1.22	1.31	1.23	1.36	1.35	1.52	1.49	1.50	1.31	1.31	1.22	1.39	1.15	1.08	1.21	1.04	1.12	1.03	1.10
135	1.31	1.38	1.31	1.41	1.44	1.62	1.60	1.62	1.44	1.39	1.32	1.43	1.27	1.17	1.30	1.17	1.21	1.11	1.18
140	1.31	1.43	1.35	1.49	1.47	1.67	1.69	1.67	1.45	1.46	1.40	1.45	1.37	1.31	1.40	1.29	1.32	1.22	1.27
145	1.34	1.47	1.41	1.55	1.56	1.69	1.70	1.72	1.53	1.52	1.45	1.45	1.48	1.37	1.47	1.43	1.45	1.34	1.37
150	1.40	1.48	1.45	1.61	1.59	1.69	1.72	1.75	1.59	1.58	1.48	1.48	1.59	1.46	1.54	1.49	1.62	1.45	1.50
155	1.44	1.55	1.52	1.65	1.61	1.68	1.71	1.75	1.61	1.62	1.48	1.48	1.68	1.56	1.63	1.56	1.71	1.59	1.62
160	1.46	1.61	1.59	1.69	1.63	1.69	1.71	1.75	1.62	1.67	1.48	1.52	1.75	1.62	1.71	1.62	1.74	1.71	1.77
165	1.56	1.65	1.59	1.73	1.69	1.73	1.71	1.76	1.62	1.69	1.49	1.56	1.83	1.70	1.80	1.72	1.81	1.77	1.87
170	1.59	1.71	1.69	1.76	1.69	1.76	1.73	1.77	1.69	1.70	1.57	1.61	1.85	1.74	1.85	1.80	1.88	1.84	1.96
175	1.71	1.81	1.73	1.85	1.80	1.85	1.82	1.90	1.82	1.77	1.67	1.76	1.85	1.77	1.86	1.83	1.89	1.86	1.97
180	1.84	1.86	1.86	1.86	1.92	1.92	1.98	1.99	1.88	1.86	1.78	1.82	1.85	1.86	1.86	1.83	1.89	1.87	1.96

C Range: 0 - 360DEG  
 C Interval: 15.0DEG  
 Test Speed: HIGH  
 Temperature:25.3DEG  
 Operators:  
 Test Date:2019-12-19

γ Range: 0 - 180DEG  
 γ Interval: 1.0DEG  
 Test System:EVERFINE GO-2000A\_V1 SYSTEM V2.0.362  
 Humidity:65.0%  
 Test Distance:12.586m [K=1.0000]  
 Remarks:

LUMINOUS DISTRIBUTION INTENSITY DATA

NAME: 软灯条	TYPE:	WEIGHT:
SPEC.: LWF-S-102400W60	DIM.: 1	SERIAL No.:
MFR.: LEDWIDE LIGHTING CO., LTD	SUR.:0.006*1	Shielding Angle:

Table--2

UNIT: cd

C( DEG) γ (DEG)	285	300	315	330	345														
0	121	121	121	121	121														
5	121	121	121	121	121														
10	119	119	119	119	120														
15	117	117	117	117	117														
20	114	114	114	114	114														
25	110	110	110	110	110														
30	105	106	105	106	106														
35	99.7	100.0	99.9	100	100.0														
40	93.3	93.6	93.5	93.7	93.5														
45	86.0	86.4	86.2	86.5	86.2														
50	78.0	78.2	78.2	78.3	78.2														
55	69.2	69.4	69.4	69.5	69.4														
60	59.6	59.8	59.8	60.0	59.8														
65	49.3	49.6	49.5	49.7	49.5														
70	35.2	36.2	38.8	39.0	38.7														
75	25.2	24.6	24.9	28.0	27.7														
80	15.9	15.5	15.3	15.5	17.1														
85	8.10	8.17	8.06	8.01	8.09														
90	3.02	2.94	2.62	2.46	2.19														
95	1.02	0.87	0.75	0.45	0.39														
100	0.59	0.50	0.44	0.44	0.39														
105	0.53	0.57	0.48	0.56	0.46														
110	0.58	0.67	0.60	0.67	0.57														
115	0.69	0.78	0.70	0.79	0.69														
120	0.78	0.90	0.81	0.90	0.80														
125	0.90	1.00	0.92	1.01	0.92														
130	1.03	1.10	1.03	1.12	1.03														
135	1.10	1.19	1.14	1.23	1.17														
140	1.22	1.31	1.22	1.34	1.28														
145	1.31	1.40	1.32	1.44	1.37														
150	1.42	1.51	1.42	1.54	1.46														
155	1.54	1.60	1.56	1.64	1.56														
160	1.65	1.72	1.66	1.73	1.62														
165	1.73	1.80	1.73	1.79	1.69														
170	1.82	1.87	1.81	1.82	1.73														
175	1.87	1.94	1.86	1.84	1.76														
180	1.98	1.95	1.86	1.84	1.83														

C Range: 0 - 360DEG  
 C Interval: 15.0DEG  
 Test Speed: HIGH  
 Temperature:25.3DEG  
 Operators:  
 Test Date:2019-12-19

γ Range: 0 - 180DEG  
 γ Interval: 1.0DEG  
 Test System:EVERFINE GO-2000A\_V1 SYSTEM V2.0.362  
 Humidity:65.0%  
 Test Distance:12.586m [K=1.0000]  
 Remarks: