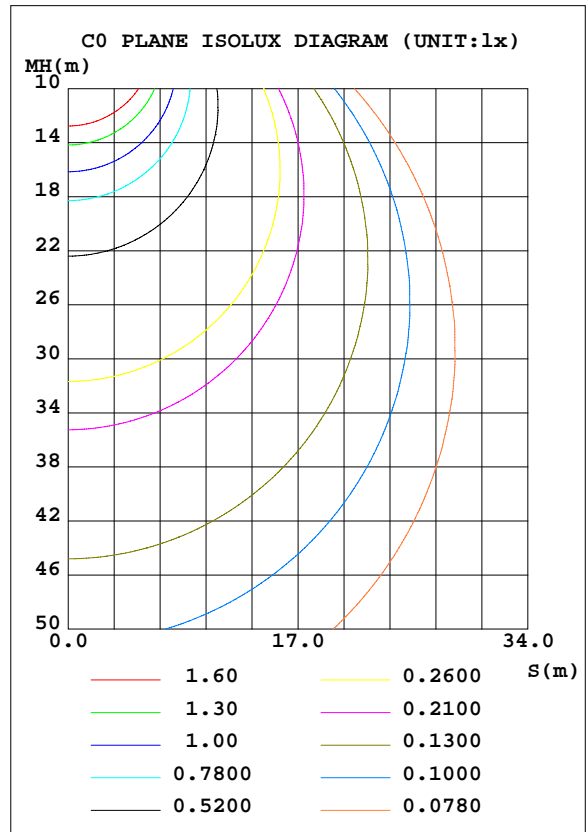
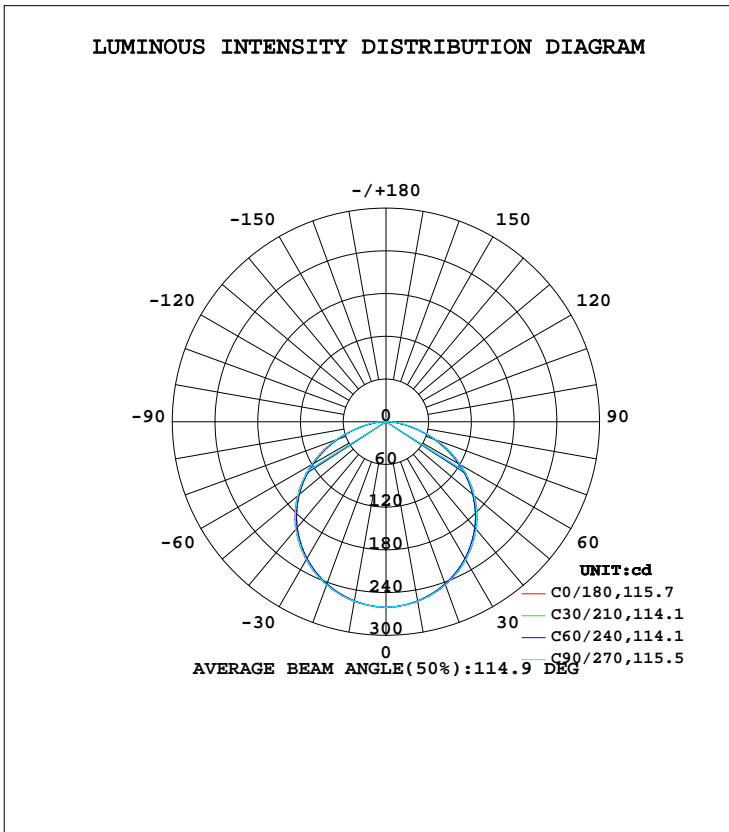


LUMINAIRE PHOTOMETRIC TEST REPORT

NAME: FL	TYPE:	WEIGHT:
SPEC.:LWF-132400W60-FS-10W	DIM.: L=1M	SERIAL No.:
MFR.: LEDWIDE LIGHTING CO., LTD	SUR.:0.01*1	Shielding Angle:

DATA OF LAMP		PHOTOMETRIC DATA Eff: 77.78 lm/W			
MODEL		I _{max} (cd)	260.9	S/MH(C0/180)	1.28
NOMINAL POWER(W)	9.98	LOR(%)	100.0	S/MH(C90/270)	1.28
RATED VOLTAGE(V)	24	TOTAL FLUX(lm)	775.51	η UP, DN(C0-180)	0.9,49.1
NOMINAL FLUX(lm)	775.513	CIE CLASS	DIRECT	η UP, DN(C180-360)	0.9,49.1
LAMPS INSIDE	1	η up(%)	1.8	CIBSE SHR NOM	1.25
TEST VOLTAGE(V)	24	η down(%)	98.2	CIBSE SHR MAX	1.35



C Range: 0 - 90DEG
 C Interval: 15.0DEG
 Test Speed: HIGH
 Temperature:25.3DEG
 Operators:
 Test Date:2018-12-28

γ Range: 0 - 180DEG
 γ Interval: 1.0DEG
 Test System:EVERFINE GO-2000A_V1 SYSTEM V2.0.362
 Humidity:65.0%
 Test Distance:12.226m [K=1.0000]
 Remarks:

ZONAL FLUX DIAGRAM

ZONAL FLUX DIAGRAM:

γ	C0	C45	C90	C135	C180	C225	C270	C315	γ	Φ zone	Φ total	%lum, lamp
10	256.3	255.5	255.9	255.5	256.3	255.5	255.9	255.5	0- 10	24.63	24.63	3.18,3.18
20	243.9	242.6	243.5	242.6	243.9	242.6	243.5	242.6	10- 20	70.65	95.28	12.3,12.3
30	224.0	222.1	223.5	222.1	224.0	222.1	223.5	222.1	20- 30	107.7	203.0	26.2,26.2
40	196.8	194.3	197.4	194.3	196.8	194.3	197.4	194.3	30- 40	131.2	334.1	43.1,43.1
50	162.2	159.1	161.6	159.1	162.2	159.1	161.6	159.1	40- 50	137.5	471.7	60.8,60.8
60	121.1	117.9	120.5	117.9	121.1	117.9	120.5	117.9	50- 60	125.1	596.8	77.77
70	74.79	72.48	74.94	72.48	74.79	72.48	74.94	72.48	60- 70	95.27	692.1	89.2,89.2
80	29.47	29.25	32.15	29.25	29.47	29.25	32.15	29.25	70- 80	53.53	745.6	96.1,96.1
90	0.7010	4.298	6.498	4.298	0.7010	4.298	6.498	4.298	80- 90	16.03	761.6	98.2,98.2
100	0.8122	0.8916	1.103	0.8916	0.8122	0.8916	1.103	0.8916	90-100	1.633	763.2	98.4,98.4
110	1.469	1.509	1.445	1.509	1.469	1.509	1.445	1.509	100-110	1.230	764.5	98.6,98.6
120	1.993	2.111	2.040	2.111	1.993	2.111	2.040	2.111	110-120	1.756	766.2	98.8,98.8
130	2.384	2.658	2.556	2.658	2.384	2.658	2.556	2.658	120-130	2.091	768.3	99.1,99.1
140	2.689	3.135	2.986	3.135	2.689	3.135	2.986	3.135	130-140	2.174	770.5	99.4,99.4
150	3.001	3.463	3.228	3.463	3.001	3.463	3.228	3.463	140-150	1.994	772.5	99.6,99.6
160	3.267	3.698	3.533	3.698	3.267	3.698	3.533	3.698	150-160	1.596	774.1	99.8,99.8
170	3.666	3.932	3.877	3.932	3.666	3.932	3.877	3.932	160-170	1.044	775.1	100,100
180	4.135	4.206	4.378	4.206	4.135	4.206	4.378	4.206	170-180	0.3805	775.5	100,100
DEG	LUMINOUS INTENSITY:cd									UNIT:lm		

Conical surface Flux(90deg): 403.31 lm

%lum = 52.0%
%lamp = 52.0%

Conical surface Flux(120deg): 596.79 lm

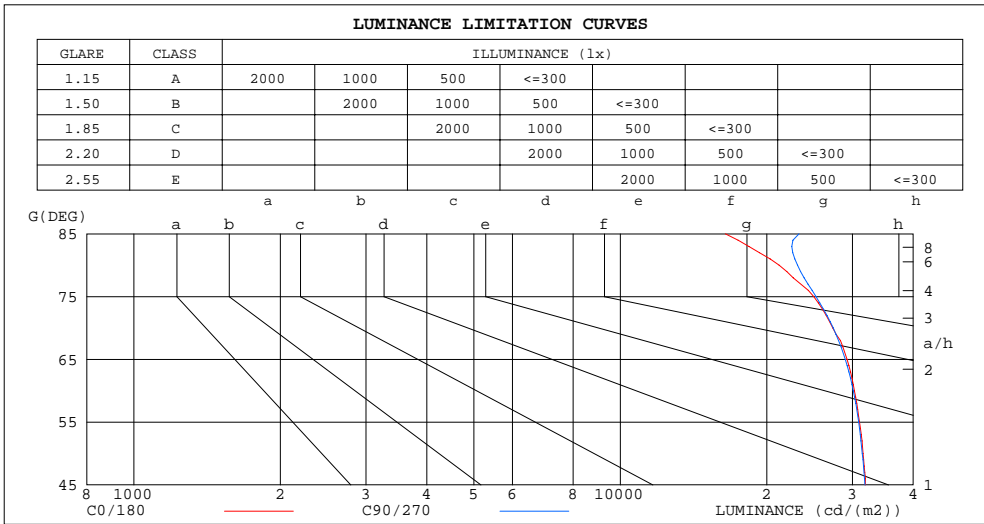
%lum = 77.0%
%lamp = 77.0%

C Range: 0 - 90DEG
C Interval: 15.0DEG
Test Speed: HIGH
Temperature:25.3DEG
Operators:
Test Date:2018-12-28

γ Range: 0 - 180DEG
γ Interval: 1.0DEG
Test System:EVERFINE GO-2000A_V1 SYSTEM V2.0.362
Humidity:65.0%
Test Distance:12.226m [K=1.0000]
Remarks:

LUMINANCE LIMITATION CURVES

NAME: FL	TYPE:	WEIGHT:
SPEC.:LWF-132400W60-FS-10W	DIM.: L=1M	SERIAL No.:
MFR.: LEDWIDE LIGHTING CO., LTD	SUR.:0.01*1	Shielding Angle:



LUMINANCE cd/(m2)		
G(DEG)	C0/180	C90/270
85	16435	23300
80	21213	23140
75	24982	25249
70	27334	27388
65	29246	28990
60	30286	30122
55	31028	30899
50	31535	31433
45	31885	31824

C Range: 0 - 90DEG
 C Interval: 15.0DEG
 Test Speed: HIGH
 Temperature:25.3DEG
 Operators:
 Test Date:2018-12-28

γ Range: 0 - 180DEG
 γ Interval: 1.0DEG
 Test System:EVERFINE GO-2000A_V1 SYSTEM V2.0.362
 Humidity:65.0%
 Test Distance:12.226m [K=1.0000]
 Remarks:

WEC AND CCEC

NAME: FL	TYPE:	WEIGHT:
SPEC.:LWF-132400W60-FS-10W	DIM.: L=1M	SERIAL No.:
MFR.: LEDWIDE LIGHTING CO., LTD	SUR.:0.01*1	Shielding Angle:

ρcc	80%			70%			50%			30%			10%			0
ρw	50%	30%	10%	50%	30%	10%	50%	30%	10%	50%	30%	10%	50%	30%	10%	0
ρfc	20%			20%			20%			20%			20%			0
RCR	RCR:Room Cavity Ratio						Wall Exitance Coefficients(WEC)									
0.0																
1.0	.312	.178	.056	.305	.174	.055	.290	.167	.053	.277	.160	.051	.265	.154	.050	
2.0	.293	.161	.049	.286	.158	.049	.274	.152	.047	.262	.147	.046	.251	.142	.045	
3.0	.271	.144	.043	.265	.142	.043	.254	.138	.042	.243	.133	.041	.234	.129	.040	
4.0	.250	.130	.038	.245	.128	.038	.235	.124	.037	.225	.121	.037	.217	.118	.036	
5.0	.231	.118	.034	.226	.116	.034	.217	.113	.033	.209	.110	.033	.201	.108	.032	
6.0	.214	.107	.031	.210	.106	.031	.202	.103	.030	.194	.101	.030	.187	.099	.029	
7.0	.199	.098	.028	.195	.097	.028	.188	.095	.027	.182	.093	.027	.175	.091	.027	
8.0	.186	.091	.026	.183	.090	.025	.176	.088	.025	.170	.086	.025	.164	.084	.025	
9.0	.174	.084	.024	.171	.083	.023	.165	.082	.023	.160	.080	.023	.155	.079	.023	
10.0	.164	.079	.022	.161	.078	.022	.156	.076	.021	.151	.075	.021	.146	.073	.021	

ρcc	80%			70%			50%			30%			10%			0
ρw	50%	30%	10%	50%	30%	10%	50%	30%	10%	50%	30%	10%	50%	30%	10%	0
ρfc	20%			20%			20%			20%			20%			0
RCR	RCR:Room Cavity Ratio						Ceiling Cavity Exitance Coefficients(CCEC)									
0.0	.204	.204	.204	.174	.174	.174	.119	.119	.119	.068	.068	.068	.022	.022	.022	
1.0	.194	.170	.148	.166	.146	.127	.114	.100	.088	.065	.058	.051	.021	.019	.017	
2.0	.186	.146	.112	.160	.125	.097	.109	.087	.067	.063	.050	.039	.020	.016	.013	
3.0	.179	.128	.088	.153	.111	.076	.105	.077	.054	.061	.045	.032	.020	.015	.010	
4.0	.171	.115	.072	.147	.099	.063	.101	.069	.044	.058	.041	.026	.019	.013	.009	
5.0	.164	.105	.061	.141	.091	.053	.097	.063	.038	.056	.037	.022	.018	.012	.007	
6.0	.156	.096	.053	.135	.083	.046	.093	.058	.033	.054	.034	.019	.017	.011	.006	
7.0	.150	.089	.047	.129	.078	.041	.089	.054	.029	.052	.032	.017	.017	.010	.006	
8.0	.143	.084	.043	.123	.073	.037	.085	.051	.026	.050	.030	.016	.016	.010	.005	
9.0	.137	.079	.039	.118	.068	.034	.082	.048	.024	.048	.028	.015	.015	.009	.005	
10.0	.131	.075	.037	.113	.065	.032	.079	.046	.023	.046	.027	.014	.015	.009	.004	

C Range: 0 - 90DEG
 C Interval: 15.0DEG
 Test Speed: HIGH
 Temperature:25.3DEG
 Operators:
 Test Date:2018-12-28

γ Range: 0 - 180DEG
 γ Interval: 1.0DEG
 Test System:EVERFINE GO-2000A_V1 SYSTEM V2.0.362
 Humidity:65.0%
 Test Distance:12.226m [K=1.0000]
 Remarks:

UGR(Unified Glare Rating) Table

NAME: FL		TYPE:					WEIGHT:				
SPEC.:LWF-132400W60-FS-10W		DIM.: L=1M					SERIAL No.:				
MFR.: LEDWIDE LIGHTING CO., LTD		SUR.:0.01*1					Shielding Angle:				
ceiling/cavity	0.7	0.7	0.5	0.5	0.3	0.7	0.7	0.5	0.5	0.3	
walls	0.5	0.3	0.5	0.3	0.3	0.5	0.3	0.5	0.3	0.3	
working plane	0.2	0.2	0.2	0.2	0.2	0.2	0.2	0.2	0.2	0.2	
Room dimensions	Viewed crosswise					Viewed endwise					
x = 2H y = 2H	25.6	27.1	25.9	27.3	27.6	25.6	27.1	25.9	27.3	27.6	
3H	27.1	28.5	27.5	28.8	29.1	27.1	28.5	27.4	28.8	29.0	
4H	27.7	29.0	28.1	29.3	29.6	27.7	29.0	28.0	29.3	29.6	
6H	28.1	29.3	28.5	29.6	30.0	28.1	29.4	28.5	29.7	30.0	
8H	28.2	29.4	28.6	29.7	30.0	28.3	29.5	28.7	29.8	30.1	
12H	28.2	29.4	28.6	29.7	30.1	28.4	29.6	28.8	29.9	30.2	
4H 2H	26.2	27.5	26.5	27.8	28.1	26.2	27.5	26.5	27.8	28.1	
3H	27.9	29.0	28.3	29.4	29.7	27.9	29.0	28.2	29.3	29.7	
4H	28.6	29.6	29.0	30.0	30.4	28.6	29.6	29.0	30.0	30.3	
6H	29.1	30.0	29.5	30.4	30.8	29.1	30.1	29.5	30.4	30.8	
8H	29.2	30.1	29.7	30.5	30.9	29.3	30.2	29.8	30.6	31.0	
12H	29.3	30.1	29.8	30.5	31.0	29.5	30.3	30.0	30.7	31.2	
8H 4H	28.8	29.7	29.2	30.1	30.5	28.8	29.7	29.2	30.1	30.5	
6H	29.4	30.2	29.9	30.6	31.1	29.5	30.2	30.0	30.7	31.1	
8H	29.7	30.3	30.1	30.8	31.2	29.8	30.4	30.3	30.9	31.4	
12H	29.8	30.4	30.3	30.8	31.4	30.0	30.6	30.6	31.1	31.6	
12H 4H	28.8	29.6	29.3	30.0	30.5	28.8	29.6	29.3	30.0	30.5	
6H	29.5	30.1	30.0	30.6	31.1	29.5	30.2	30.0	30.6	31.1	
8H	29.7	30.3	30.2	30.8	31.3	29.9	30.4	30.4	30.9	31.4	
Variations with the observer position at spacings:											
S = 1.0H	+ 0.2 / - 0.2					+ 0.2 / - 0.2					
1.5H	+ 0.2 / - 0.3					+ 0.2 / - 0.3					
2.0H	+ 0.2 / - 0.3					+ 0.2 / - 0.3					

CIE Pub.117, 775.5 lm Total Lamp Luminous Flux Correct (8log(F/F0) = -0.9)

C Range: 0 - 90DEG
 C Interval: 15.0DEG
 Test Speed: HIGH
 Temperature:25.3DEG
 Operators:
 Test Date:2018-12-28

γ Range: 0 - 180DEG
 γ Interval: 1.0DEG
 Test System:EVERFINE GO-2000A_V1 SYSTEM V2.0.362
 Humidity:65.0%
 Test Distance:12.226m [K=1.0000]
 Remarks:

UTILIZATION FACTORS TABLE

NAME: FL	TYPE:	WEIGHT:
SPEC.:LWF-132400W60-FS-10W	DIM.: L=1M	SERIAL No.:
MFR.: LEDWIDE LIGHTING CO., LTD	SUR.:0.01*1	Shielding Angle:

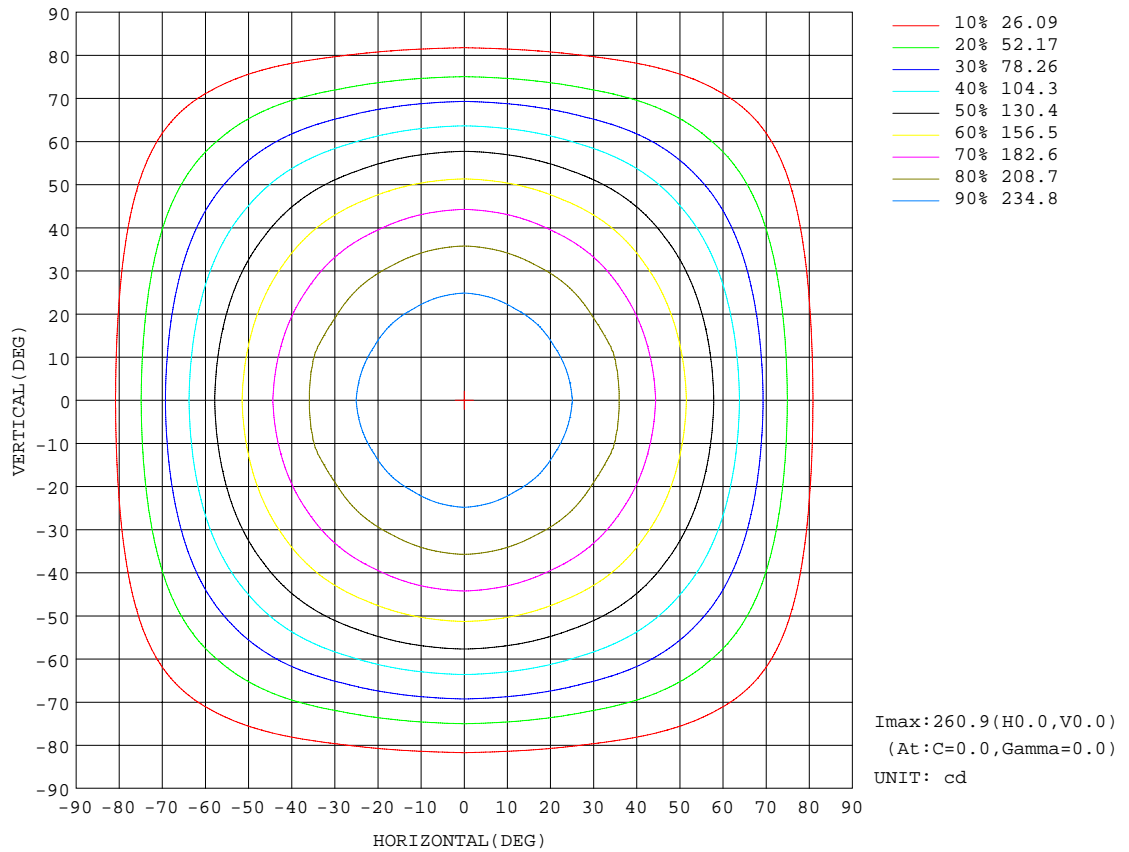
REFLECTANCE										
Ceiling	0.8	0.8	0.8	0.7	0.7	0.7	0.5	0.5	0.5	0
Walls	0.7	0.5	0.3	0.7	0.5	0.3	0.7	0.5	0.3	0
Working plane	0.2	0.2	0.2	0.2	0.2	0.2	0.2	0.2	0.2	0
ROOM INDEX	UTILIZATION FACTORS(PERCENT) $k(RI) \times RCR = 5$									
k = 0.60	57	45	38	56	45	38	54	44	38	31
0.80	67	55	47	65	54	47	64	53	47	40
1.00	75	64	56	74	63	56	71	64	55	48
1.25	82	72	64	81	71	64	78	69	63	55
1.50	87	77	70	85	76	70	82	74	68	60
2.00	94	85	79	92	84	78	88	82	76	68
2.50	98	90	84	96	89	83	92	86	81	72
3.00	102	95	89	99	93	88	95	90	85	76
4.00	106	100	95	103	98	93	98	94	91	81
5.00	108	103	99	105	101	97	101	97	94	84
ROOM INDEX	UF(total)									Direct
According to DIN EN 13032-2 2004			Suspended				SHRNOM = 1.25			

C Range: 0 - 90DEG
 C Interval: 15.0DEG
 Test Speed: HIGH
 Temperature:25.3DEG
 Operators:
 Test Date:2018-12-28

γ Range: 0 - 180DEG
 γ Interval: 1.0DEG
 Test System:EVERFINE GO-2000A_V1 SYSTEM V2.0.362
 Humidity:65.0%
 Test Distance:12.226m [K=1.0000]
 Remarks:

ISOCANDELA DIAGRAM

NAME: FL	TYPE:	WEIGHT:
SPEC.:LWF-132400W60-FS-10W	DIM.: L=1M	SERIAL No.:
MFR.: LEDWIDE LIGHTING CO., LTD	SUR.:0.01*1	Shielding Angle:

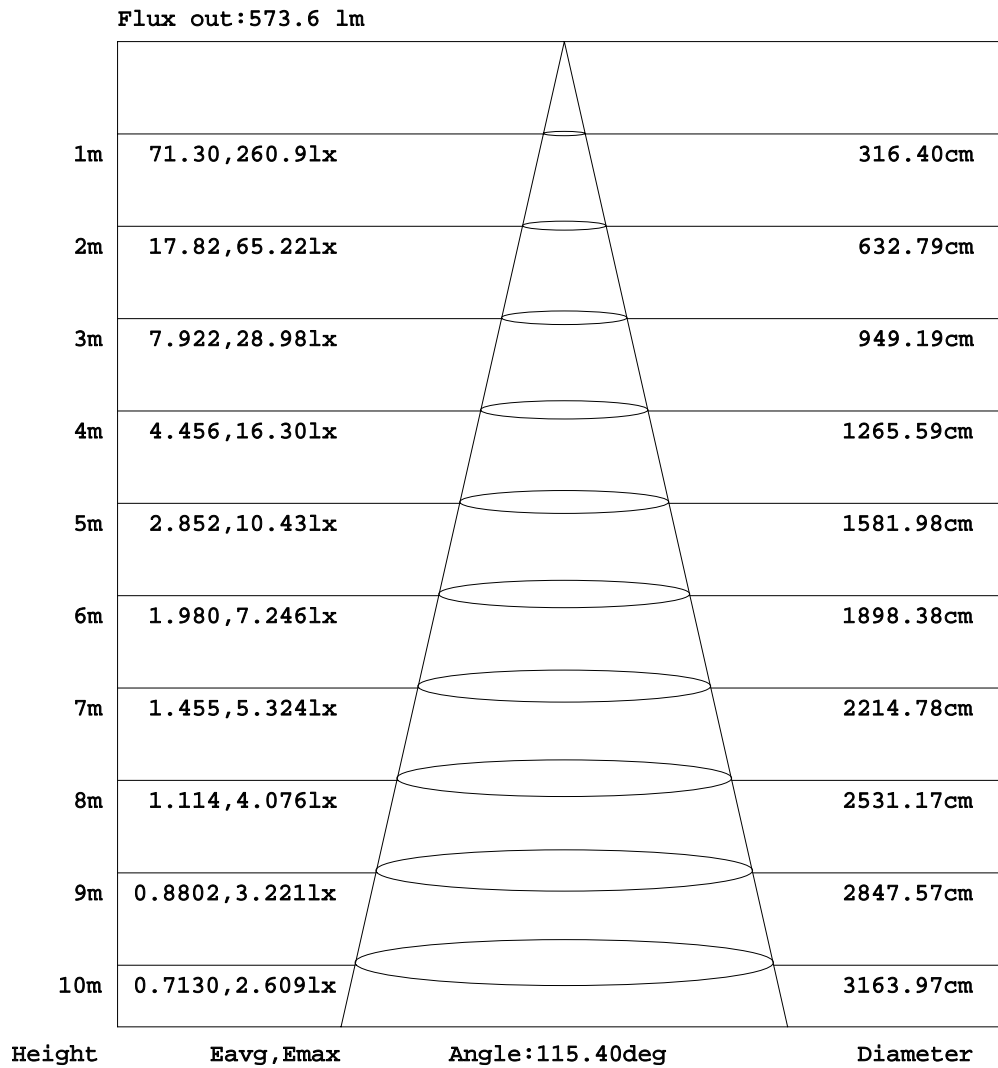


C Range: 0 - 90DEG
 C Interval: 15.0DEG
 Test Speed: HIGH
 Temperature: 25.3DEG
 Operators:
 Test Date: 2018-12-28

γ Range: 0 - 180DEG
 γ Interval: 1.0DEG
 Test System: EVERFINE GO-2000A_V1 SYSTEM V2.0.362
 Humidity: 65.0%
 Test Distance: 12.226m [K=1.0000]
 Remarks:

AAI Figure

NAME: FL	TYPE:	WEIGHT:
SPEC.:LWF-132400W60-FS-10W	DIM.: L=1M	SERIAL No.:
MFR.: LEDWIDE LIGHTING CO., LTD	SUR.:0.01*1	Shielding Angle:

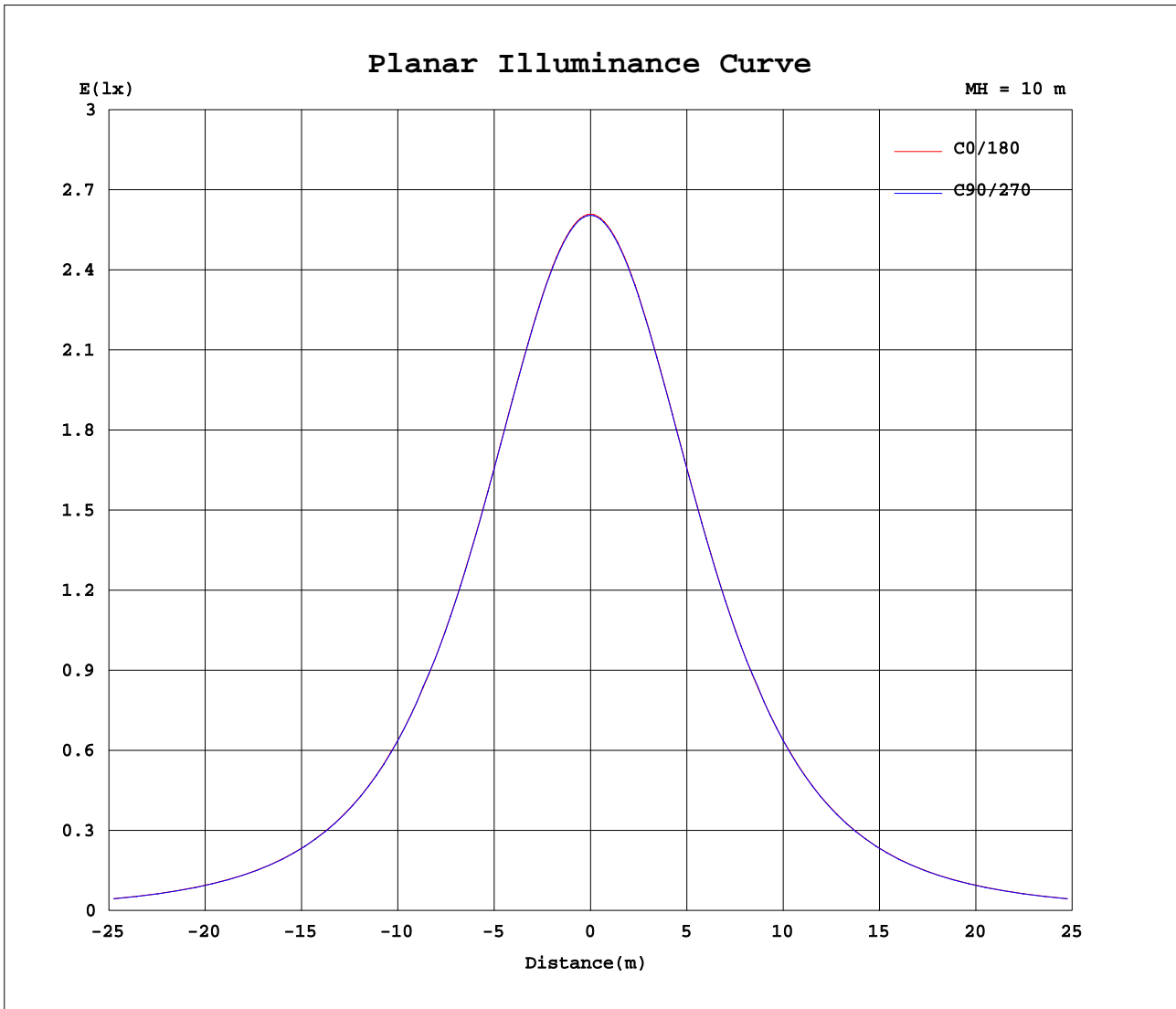


Note:The Curves indicate the illuminated area and the average illumination when the luminaire is at different distance.

C Range: 0 - 90DEG
 C Interval: 15.0DEG
 Test Speed: HIGH
 Temperature:25.3DEG
 Operators:
 Test Date:2018-12-28

γ Range: 0 - 180DEG
 γ Interval: 1.0DEG
 Test System:EVERFINE GO-2000A_V1 SYSTEM V2.0.362
 Humidity:65.0%
 Test Distance:12.226m [K=1.0000]
 Remarks:

Planar Illuminance Curve



C Range: 0 - 90DEG
 C Interval: 15.0DEG
 Test Speed: HIGH
 Temperature: 25.3DEG
 Operators:
 Test Date: 2018-12-28

γ Range: 0 - 180DEG
 γ Interval: 1.0DEG
 Test System: EVERFINE GO-2000A_V1 SYSTEM V2.0.362
 Humidity: 65.0%
 Test Distance: 12.226m [K=1.0000]
 Remarks:

LUMINOUS DISTRIBUTION INTENSITY DATA

NAME: FL	TYPE:	WEIGHT:
SPEC.:LWF-132400W60-FS-10W	DIM.: L=1M	SERIAL No.:
MFR.: LEDWIDE LIGHTING CO., LTD	SUR.:0.01*1	Shielding Angle:

Table--1

UNIT: cd

C(DEG) γ (DEG)	0	15	30	45	60	75	90	105	120	135	150	165	180	195	210	225	240	255	270
0	261	261	261	261	261	260	260	260	261	261	261	261	261	261	261	261	261	260	260
5	260	259	259	259	259	259	259	259	259	259	259	259	260	259	259	259	259	259	259
10	256	256	255	256	255	256	256	256	255	256	255	256	256	256	255	256	255	256	256
15	251	251	250	250	250	250	251	250	250	250	250	251	251	251	250	250	250	250	251
20	244	243	242	243	242	243	243	243	242	243	242	243	244	243	242	243	242	243	243
25	235	234	233	233	233	234	234	234	233	233	233	234	235	234	233	233	233	234	234
30	224	223	222	222	222	223	224	223	222	222	222	223	224	223	222	222	222	223	224
35	211	210	209	209	209	210	211	210	209	209	209	210	211	210	209	209	209	210	211
40	197	195	194	194	194	195	197	195	194	194	194	195	197	195	194	194	194	195	197
45	180	179	177	178	177	179	180	179	177	178	177	179	180	179	177	178	177	179	180
50	162	161	159	159	159	160	162	160	159	159	159	161	162	161	159	159	159	160	162
55	142	141	139	139	139	141	142	141	139	139	139	141	142	141	139	139	139	141	142
60	121	120	118	118	118	119	120	119	118	118	118	120	121	120	118	118	118	119	120
65	98.9	97.3	95.3	95.4	95.1	96.8	98.0	96.8	95.1	95.4	95.3	97.3	98.9	97.3	95.3	95.4	95.1	96.8	98.0
70	74.8	73.6	72.3	72.5	72.0	73.7	74.9	73.7	72.0	72.5	72.3	73.6	74.8	73.6	72.3	72.5	72.0	73.7	74.9
75	51.7	50.9	49.3	49.8	49.7	51.1	52.3	51.1	49.7	49.8	49.3	50.9	51.7	50.9	49.3	49.8	49.7	51.1	52.3
80	29.5	28.9	28.5	29.2	29.7	31.1	32.1	31.1	29.7	29.2	28.5	28.9	29.5	28.9	28.5	29.2	29.7	31.1	32.1
85	11.5	11.9	12.2	13.5	14.2	15.6	16.2	15.6	14.2	13.5	12.2	11.9	11.5	11.9	12.2	13.5	14.2	15.6	16.2
90	0.70	2.83	3.46	4.30	4.89	5.94	6.50	5.94	4.89	4.30	3.46	2.83	0.70	2.83	3.46	4.30	4.89	5.94	6.50
95	0.52	0.70	0.78	0.80	1.01	1.40	1.98	1.40	1.01	0.80	0.78	0.70	0.52	0.70	0.78	0.80	1.01	1.40	1.98
100	0.81	0.89	0.85	0.89	0.86	0.98	1.10	0.98	0.86	0.89	0.85	0.89	0.81	0.89	0.85	0.89	0.86	0.98	1.10
105	1.13	1.18	1.10	1.20	1.12	1.20	1.12	1.20	1.12	1.20	1.10	1.18	1.13	1.18	1.10	1.20	1.12	1.20	1.12
110	1.47	1.50	1.40	1.51	1.44	1.51	1.45	1.51	1.44	1.51	1.40	1.50	1.47	1.50	1.40	1.51	1.44	1.51	1.45
115	1.74	1.78	1.71	1.81	1.76	1.84	1.76	1.84	1.76	1.81	1.71	1.78	1.74	1.78	1.71	1.81	1.76	1.84	1.76
120	1.99	2.06	1.98	2.11	2.06	2.16	2.04	2.16	2.06	2.11	1.98	2.06	1.99	2.06	1.98	2.11	2.06	2.16	2.04
125	2.20	2.31	2.24	2.39	2.38	2.46	2.31	2.46	2.38	2.39	2.24	2.31	2.20	2.31	2.24	2.39	2.38	2.46	2.31
130	2.38	2.53	2.49	2.66	2.67	2.73	2.56	2.73	2.67	2.66	2.49	2.53	2.38	2.53	2.49	2.66	2.67	2.73	2.56
135	2.55	2.73	2.74	2.90	2.92	2.97	2.78	2.97	2.92	2.90	2.74	2.73	2.55	2.73	2.74	2.90	2.92	2.97	2.78
140	2.69	2.91	2.92	3.14	3.12	3.17	2.99	3.17	3.12	3.14	2.92	2.91	2.69	2.91	2.92	3.14	3.12	3.17	2.99
145	2.82	3.08	3.13	3.34	3.29	3.33	3.10	3.33	3.29	3.34	3.13	3.08	2.82	3.08	3.13	3.34	3.29	3.33	3.10
150	3.00	3.24	3.28	3.46	3.43	3.46	3.23	3.46	3.43	3.46	3.28	3.24	3.00	3.24	3.28	3.46	3.43	3.46	3.23
155	3.13	3.42	3.42	3.60	3.56	3.55	3.38	3.55	3.56	3.60	3.42	3.42	3.13	3.42	3.42	3.60	3.56	3.55	3.38
160	3.27	3.53	3.53	3.70	3.63	3.61	3.53	3.61	3.63	3.70	3.53	3.53	3.27	3.53	3.53	3.70	3.63	3.61	3.53
165	3.44	3.66	3.63	3.79	3.75	3.71	3.70	3.71	3.75	3.79	3.63	3.66	3.44	3.66	3.63	3.79	3.75	3.71	3.70
170	3.67	3.83	3.82	3.93	3.87	3.88	3.88	3.88	3.87	3.93	3.82	3.83	3.67	3.83	3.82	3.93	3.87	3.88	3.88
175	3.92	4.00	4.00	4.12	4.12	4.07	4.11	4.07	4.12	4.12	4.00	4.00	3.92	4.00	4.00	4.12	4.12	4.07	4.11
180	4.14	4.12	4.12	4.21	4.27	4.28	4.38	4.28	4.27	4.21	4.12	4.12	4.14	4.12	4.12	4.21	4.27	4.28	4.38

C Range: 0 - 90DEG
 C Interval: 15.0DEG
 Test Speed: HIGH
 Temperature:25.3DEG
 Operators:
 Test Date:2018-12-28

γ Range: 0 - 180DEG
 γ Interval: 1.0DEG
 Test System:EVERFINE GO-2000A_V1 SYSTEM V2.0.362
 Humidity:65.0%
 Test Distance:12.226m [K=1.0000]
 Remarks:

LUMINOUS DISTRIBUTION INTENSITY DATA

NAME: FL	TYPE:	WEIGHT:
SPEC.:LWF-132400W60-FS-10W	DIM.: L=1M	SERIAL No.:
MFR.: LEDWIDE LIGHTING CO., LTD	SUR.:0.01*1	Shielding Angle:

Table--2

UNIT: cd

C(DEG) γ (DEG)	285	300	315	330	345														
0	260	261	261	261	261														
5	259	259	259	259	259														
10	256	255	256	255	256														
15	250	250	250	250	251														
20	243	242	243	242	243														
25	234	233	233	233	234														
30	223	222	222	222	223														
35	210	209	209	209	210														
40	195	194	194	194	195														
45	179	177	178	177	179														
50	160	159	159	159	161														
55	141	139	139	139	141														
60	119	118	118	118	120														
65	96.8	95.1	95.4	95.3	97.3														
70	73.7	72.0	72.5	72.3	73.6														
75	51.1	49.7	49.8	49.3	50.9														
80	31.1	29.7	29.2	28.5	28.9														
85	15.6	14.2	13.5	12.2	11.9														
90	5.94	4.89	4.30	3.46	2.83														
95	1.40	1.01	0.80	0.78	0.70														
100	0.98	0.86	0.89	0.85	0.89														
105	1.20	1.12	1.20	1.10	1.18														
110	1.51	1.44	1.51	1.40	1.50														
115	1.84	1.76	1.81	1.71	1.78														
120	2.16	2.06	2.11	1.98	2.06														
125	2.46	2.38	2.39	2.24	2.31														
130	2.73	2.67	2.66	2.49	2.53														
135	2.97	2.92	2.90	2.74	2.73														
140	3.17	3.12	3.14	2.92	2.91														
145	3.33	3.29	3.34	3.13	3.08														
150	3.46	3.43	3.46	3.28	3.24														
155	3.55	3.56	3.60	3.42	3.42														
160	3.61	3.63	3.70	3.53	3.53														
165	3.71	3.75	3.79	3.63	3.66														
170	3.88	3.87	3.93	3.82	3.83														
175	4.07	4.12	4.12	4.00	4.00														
180	4.28	4.27	4.21	4.12	4.12														

C Range: 0 - 90DEG
 C Interval: 15.0DEG
 Test Speed: HIGH
 Temperature:25.3DEG
 Operators:
 Test Date:2018-12-28

γ Range: 0 - 180DEG
 γ Interval: 1.0DEG
 Test System:EVERFINE GO-2000A_V1 SYSTEM V2.0.362
 Humidity:65.0%
 Test Distance:12.226m [K=1.0000]
 Remarks: