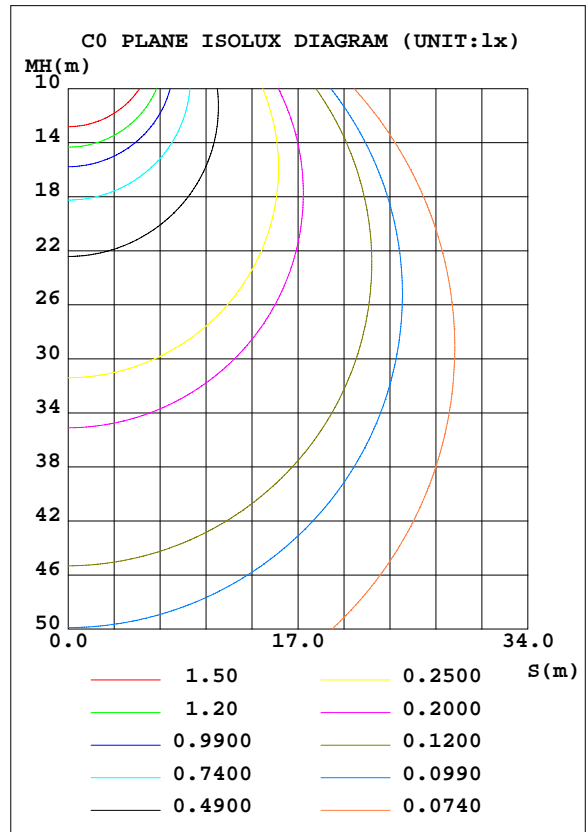
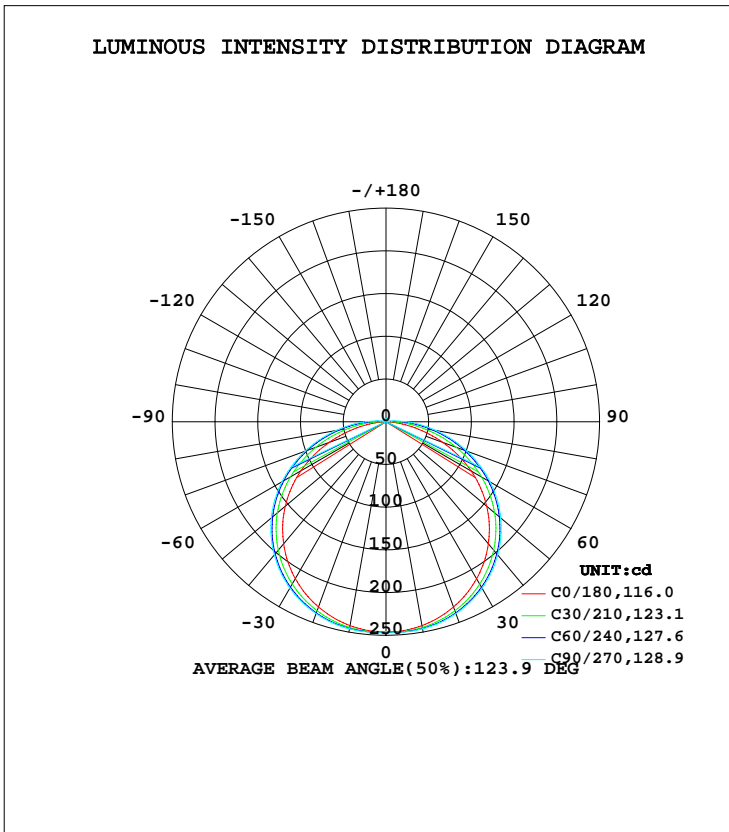


LUMINAIRE PHOTOMETRIC TEST REPORT

NAME: FL	TYPE:	WEIGHT:
SPEC.:LWF-132400W120-LP	DIM.: L=1M	SERIAL No.:
MFR.: LEDWIDE LIGHTING CO., LTD	SUR.:0.008*1	Shielding Angle:

DATA OF LAMP		PHOTOMETRIC DATA			
MODEL		Imax(cd)	246.9	S/MH(C0/180)	1.28
NOMINAL POWER(W)	8.9	LOR(%)	100.0	S/MH(C90/270)	1.36
RATED VOLTAGE(V)	24	TOTAL FLUX(lm)	838.95	η UP, DN(C0-180)	1.0,49.0
NOMINAL FLUX(lm)	838.947	CIE CLASS	DIRECT	η UP, DN(C180-360)	1.0,49.0
LAMPS INSIDE	1	η up(%)	2.0	CIBSE SHR NOM	1.50
TEST VOLTAGE(V)	24	η down(%)	98.0	CIBSE SHR MAX	1.55



C Range: 0 - 90DEG
 C Interval: 15.0DEG
 Test Speed: HIGH
 Temperature:25.3DEG
 Operators:
 Test Date:2019-01-11

γ Range: 0 - 180DEG
 γ Interval: 1.0DEG
 Test System:EVERFINE GO-2000A_V1 SYSTEM V2.0.362
 Humidity:65.0%
 Test Distance:12.226m [K=1.0000]
 Remarks:

ZONAL FLUX DIAGRAM

ZONAL FLUX DIAGRAM:

γ	C0	C45	C90	C135	C180	C225	C270	C315	γ	Φ zone	Φ total	%lum, lamp
10	242.3	245.1	246.2	245.1	242.3	245.1	246.2	245.1	0- 10	23.46	23.46	2.8,2.8
20	230.8	237.1	239.1	237.1	230.8	237.1	239.1	237.1	10- 20	68.24	91.70	10.9,10.9
30	212.2	221.9	224.9	221.9	212.2	221.9	224.9	221.9	20- 30	105.8	197.5	23.5,23.5
40	186.4	199.7	203.5	199.7	186.4	199.7	203.5	199.7	30- 40	131.5	329.1	39.2,39.2
50	154.0	170.3	175.2	170.3	154.0	170.3	175.2	170.3	40- 50	141.9	471.0	56.1,56.1
60	114.9	134.7	140.6	134.7	114.9	134.7	140.6	134.7	50- 60	134.9	605.8	72.2,72.2
70	70.81	94.04	100.8	94.04	70.81	94.04	100.8	94.04	60- 70	110.8	716.6	85.4,85.4
80	27.06	50.96	59.49	50.96	27.06	50.96	59.49	50.96	70- 80	73.13	789.8	94.1,94.1
90	0.4873	15.29	23.67	15.29	0.4873	15.29	23.67	15.29	80- 90	32.29	822.1	98,98
100	0.7419	1.233	4.561	1.233	0.7419	1.233	4.561	1.233	90-100	6.467	828.5	98.8,98.8
110	1.344	1.017	1.398	1.017	1.344	1.017	1.398	1.017	100-110	1.164	829.7	98.9,98.9
120	1.844	1.572	1.626	1.572	1.844	1.572	1.626	1.572	110-120	1.330	831.0	99.1,99.1
130	2.227	2.135	1.899	2.135	2.227	2.135	1.899	2.135	120-130	1.661	832.7	99.3,99.3
140	2.494	2.611	2.446	2.611	2.494	2.611	2.446	2.611	130-140	1.806	834.5	99.5,99.5
150	2.767	3.026	2.759	3.026	2.767	3.026	2.759	3.026	140-150	1.716	836.2	99.7,99.7
160	3.095	3.338	3.166	3.338	3.095	3.338	3.166	3.338	150-160	1.426	837.6	99.8,99.8
170	3.478	3.643	3.587	3.643	3.478	3.643	3.587	3.643	160-170	0.9590	838.6	100,100
180	3.877	3.901	4.049	3.901	3.877	3.901	4.049	3.901	170-180	0.3540	838.9	100,100
DEG	LUMINOUS INTENSITY:cd									UNIT:lm		

Conical surface Flux(90deg): 399.79 lm

%lum = 47.7%
%lamp = 47.7%

Conical surface Flux(120deg): 605.83 lm

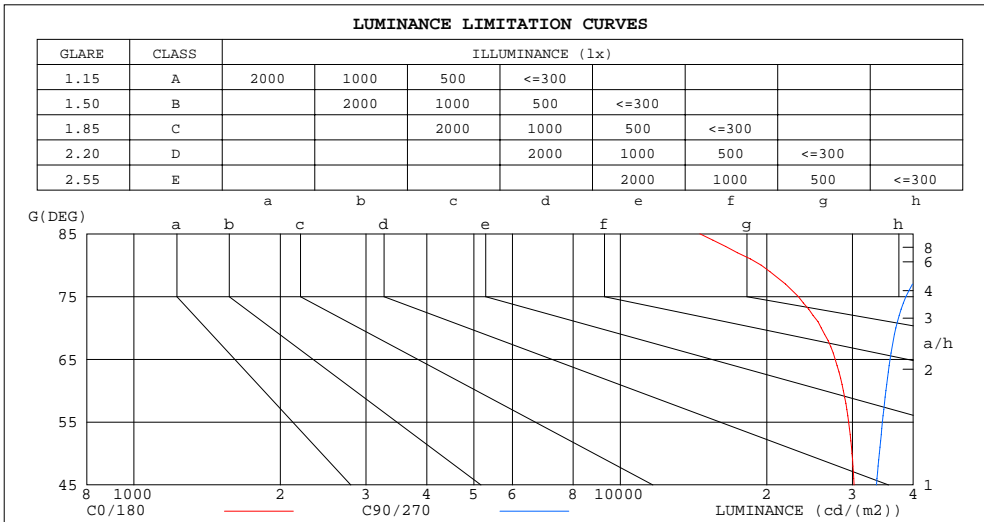
%lum = 72.2%
%lamp = 72.2%

C Range: 0 - 90DEG
C Interval: 15.0DEG
Test Speed: HIGH
Temperature:25.3DEG
Operators:
Test Date:2019-01-11

γ Range: 0 - 180DEG
γ Interval: 1.0DEG
Test System:EVERFINE GO-2000A_V1 SYSTEM V2.0.362
Humidity:65.0%
Test Distance:12.226m [K=1.0000]
Remarks:

LUMINANCE LIMITATION CURVES

NAME: FL	TYPE:	WEIGHT:
SPEC.:LWF-132400W120-LP	DIM.: L=1M	SERIAL No.:
MFR.: LEDWIDE LIGHTING CO., LTD	SUR.:0.008*1	Shielding Angle:



LUMINANCE cd/(m2)		
G(DEG)	C0/180	C90/270
85	14579	57849
80	19478	42826
75	23222	38651
70	25879	36849
65	27650	35848
60	28737	35148
55	29464	34579
50	29940	34072
45	30237	33612

C Range: 0 - 90DEG
 C Interval: 15.0DEG
 Test Speed: HIGH
 Temperature:25.3DEG
 Operators:
 Test Date:2019-01-11

γ Range: 0 - 180DEG
 γ Interval: 1.0DEG
 Test System:EVERFINE GO-2000A_V1 SYSTEM V2.0.362
 Humidity:65.0%
 Test Distance:12.226m [K=1.0000]
 Remarks:

WEC AND CCEC

NAME: FL	TYPE:	WEIGHT:
SPEC.:LWF-132400W120-LP	DIM.: L=1M	SERIAL No.:
MFR.: LEDWIDE LIGHTING CO., LTD	SUR.:0.008*1	Shielding Angle:

ρcc	80%			70%			50%			30%			10%			0
ρw	50%	30%	10%	50%	30%	10%	50%	30%	10%	50%	30%	10%	50%	30%	10%	0
ρfc	20%			20%			20%			20%			20%			0
RCR	RCR:Room Cavity Ratio						Wall Exitance Coefficients(WEC)									
0.0																
1.0	.343	.195	.062	.336	.191	.061	.321	.184	.059	.308	.177	.057	.295	.171	.055	
2.0	.314	.172	.053	.307	.169	.052	.294	.163	.051	.282	.158	.049	.271	.153	.048	
3.0	.286	.152	.046	.280	.150	.045	.268	.145	.044	.257	.141	.043	.248	.137	.042	
4.0	.261	.136	.040	.256	.134	.040	.245	.130	.039	.236	.127	.038	.227	.123	.038	
5.0	.240	.122	.035	.235	.121	.035	.226	.117	.035	.217	.115	.034	.209	.112	.034	
6.0	.221	.111	.032	.217	.109	.031	.208	.107	.031	.201	.104	.031	.194	.102	.030	
7.0	.205	.101	.029	.201	.100	.029	.194	.098	.028	.187	.096	.028	.180	.094	.028	
8.0	.191	.093	.026	.187	.092	.026	.181	.090	.026	.174	.088	.025	.168	.086	.025	
9.0	.178	.086	.024	.175	.085	.024	.169	.084	.024	.163	.082	.023	.158	.080	.023	
10.0	.167	.080	.022	.164	.079	.022	.159	.078	.022	.154	.076	.022	.149	.075	.021	

ρcc	80%			70%			50%			30%			10%			0
ρw	50%	30%	10%	50%	30%	10%	50%	30%	10%	50%	30%	10%	50%	30%	10%	0
ρfc	20%			20%			20%			20%			20%			0
RCR	RCR:Room Cavity Ratio						Ceiling Cavity Exitance Coefficients(CCEC)									
0.0	.206	.206	.206	.176	.176	.176	.120	.120	.120	.069	.069	.069	.022	.022	.022	
1.0	.198	.171	.147	.169	.147	.127	.116	.101	.088	.067	.059	.051	.021	.019	.016	
2.0	.191	.147	.111	.163	.127	.096	.112	.088	.067	.065	.051	.039	.021	.017	.013	
3.0	.183	.130	.088	.157	.112	.076	.108	.078	.053	.062	.046	.031	.020	.015	.010	
4.0	.175	.117	.072	.151	.101	.063	.104	.070	.044	.060	.041	.026	.019	.013	.009	
5.0	.168	.107	.062	.144	.092	.054	.099	.065	.038	.058	.038	.022	.019	.012	.007	
6.0	.161	.098	.054	.138	.085	.047	.095	.060	.033	.055	.035	.020	.018	.011	.007	
7.0	.154	.092	.048	.132	.079	.042	.091	.056	.030	.053	.033	.018	.017	.011	.006	
8.0	.147	.086	.044	.126	.074	.038	.087	.052	.027	.051	.031	.016	.016	.010	.005	
9.0	.141	.081	.041	.121	.070	.035	.084	.049	.025	.049	.029	.015	.016	.010	.005	
10.0	.135	.077	.038	.116	.067	.033	.081	.047	.024	.047	.028	.014	.015	.009	.005	

C Range: 0 - 90DEG
 C Interval: 15.0DEG
 Test Speed: HIGH
 Temperature:25.3DEG
 Operators:
 Test Date:2019-01-11

γ Range: 0 - 180DEG
 γ Interval: 1.0DEG
 Test System:EVERFINE GO-2000A_V1 SYSTEM V2.0.362
 Humidity:65.0%
 Test Distance:12.226m [K=1.0000]
 Remarks:

UGR(Unified Glare Rating) Table

NAME: FL		TYPE:					WEIGHT:				
SPEC.:LWF-132400W120-LP		DIM.: L=1M					SERIAL No.:				
MFR.: LEDWIDE LIGHTING CO., LTD		SUR.:0.008*1					Shielding Angle:				
ceiling/cavity	0.7	0.7	0.5	0.5	0.3	0.7	0.7	0.5	0.5	0.3	
walls	0.5	0.3	0.5	0.3	0.3	0.5	0.3	0.5	0.3	0.3	
working plane	0.2	0.2	0.2	0.2	0.2	0.2	0.2	0.2	0.2	0.2	
Room dimensions	Viewed crosswise					Viewed endwise					
x = 2H y = 2H	25.2	26.8	25.5	27.0	27.3	25.9	27.5	26.2	27.7	28.0	
3H	26.8	28.2	27.1	28.5	28.8	27.9	29.3	28.2	29.6	29.9	
4H	27.4	28.7	27.7	29.0	29.3	28.8	30.2	29.1	30.4	30.8	
6H	27.7	29.0	28.1	29.4	29.7	29.6	30.9	30.0	31.2	31.6	
8H	27.8	29.1	28.2	29.4	29.8	30.0	31.3	30.4	31.6	31.9	
12H	27.9	29.1	28.3	29.4	29.8	30.4	31.6	30.8	32.0	32.3	
4H 2H	26.0	27.4	26.4	27.7	28.0	26.6	27.9	26.9	28.2	28.5	
3H	27.8	29.0	28.2	29.4	29.7	28.7	29.9	29.1	30.3	30.6	
4H	28.6	29.7	29.0	30.0	30.4	29.8	30.9	30.2	31.3	31.6	
6H	29.1	30.1	29.5	30.5	30.9	30.8	31.8	31.2	32.2	32.6	
8H	29.3	30.2	29.7	30.6	31.0	31.3	32.2	31.7	32.6	33.1	
12H	29.4	30.2	29.8	30.6	31.1	31.8	32.6	32.3	33.1	33.5	
8H 4H	29.1	30.0	29.5	30.4	30.8	30.1	31.0	30.6	31.4	31.9	
6H	29.8	30.6	30.3	31.1	31.5	31.4	32.1	31.8	32.6	33.0	
8H	30.1	30.8	30.6	31.3	31.8	32.0	32.7	32.5	33.1	33.6	
12H	30.3	30.9	30.8	31.4	31.9	32.7	33.3	33.2	33.7	34.3	
12H 4H	29.2	30.0	29.6	30.4	30.9	30.1	31.0	30.6	31.4	31.9	
6H	30.0	30.7	30.5	31.2	31.7	31.4	32.1	31.9	32.6	33.1	
8H	30.4	31.0	30.9	31.5	32.0	32.2	32.7	32.7	33.2	33.8	
Variations with the observer position at spacings:											
S = 1.0H	+ 0.1 / - 0.2					+ 0.1 / - 0.1					
1.5H	+ 0.2 / - 0.4					+ 0.2 / - 0.3					
2.0H	+ 0.2 / - 0.5					+ 0.2 / - 0.3					

CIE Pub.117, 838.9 lm Total Lamp Luminous Flux Correct (8log(F/F0) = -0.6)

C Range: 0 - 90DEG
 C Interval: 15.0DEG
 Test Speed: HIGH
 Temperature:25.3DEG
 Operators:
 Test Date:2019-01-11

γ Range: 0 - 180DEG
 γ Interval: 1.0DEG
 Test System:EVERFINE GO-2000A_V1 SYSTEM V2.0.362
 Humidity:65.0%
 Test Distance:12.226m [K=1.0000]
 Remarks:

UTILIZATION FACTORS TABLE

NAME: FL	TYPE:	WEIGHT:
SPEC.:LWF-132400W120-LP	DIM.: L=1M	SERIAL No.:
MFR.: LEDWIDE LIGHTING CO., LTD	SUR.:0.008*1	Shielding Angle:

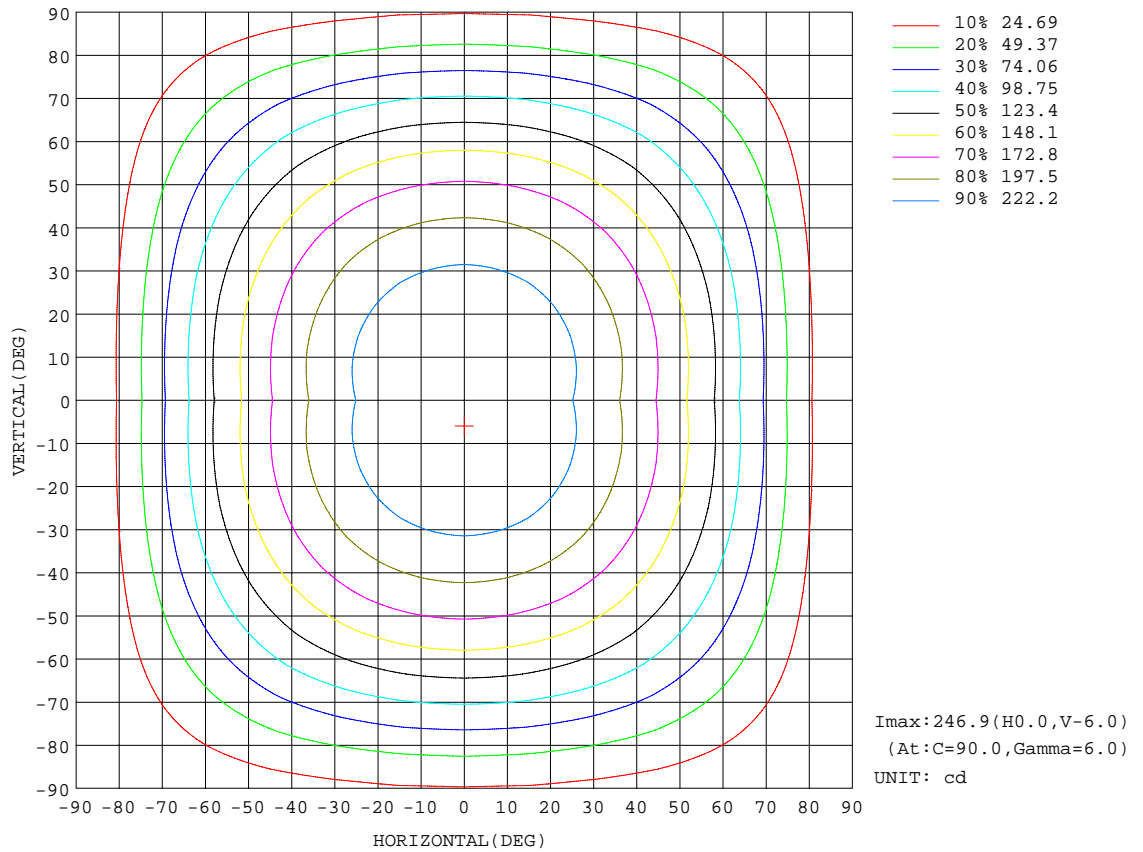
REFLECTANCE										
Ceiling	0.8	0.8	0.8	0.7	0.7	0.7	0.5	0.5	0.5	0
Walls	0.7	0.5	0.3	0.7	0.5	0.3	0.7	0.5	0.3	0
Working plane	0.2	0.2	0.2	0.2	0.2	0.2	0.2	0.2	0.2	0
ROOM INDEX	UTILIZATION FACTORS(PERCENT) $k(RI) \times RCR = 5$									
k = 0.60	54	42	35	54	42	35	52	42	35	28
0.80	64	52	44	63	52	44	61	51	44	36
1.00	73	61	53	71	60	53	69	62	52	44
1.25	80	68	61	78	68	60	75	66	59	52
1.50	85	74	67	83	73	66	80	71	65	57
2.00	92	83	76	90	81	75	86	79	73	64
2.50	96	88	81	94	86	80	90	83	78	69
3.00	100	92	86	97	90	85	93	87	82	73
4.00	104	98	92	101	96	91	97	92	88	78
5.00	107	101	97	104	99	95	99	95	92	81
ROOM INDEX	UF(total)									Direct
According to DIN EN 13032-2 2004			Suspended				SHRNOM = 1.25			

C Range: 0 - 90DEG
 C Interval: 15.0DEG
 Test Speed: HIGH
 Temperature:25.3DEG
 Operators:
 Test Date:2019-01-11

γ Range: 0 - 180DEG
 γ Interval: 1.0DEG
 Test System:EVERFINE GO-2000A_V1 SYSTEM V2.0.362
 Humidity:65.0%
 Test Distance:12.226m [K=1.0000]
 Remarks:

ISOCANDELA DIAGRAM

NAME: FL	TYPE:	WEIGHT:
SPEC.:LWF-132400W120-LP	DIM.: L=1M	SERIAL No.:
MFR.: LEDWIDE LIGHTING CO., LTD	SUR.:0.008*1	Shielding Angle:

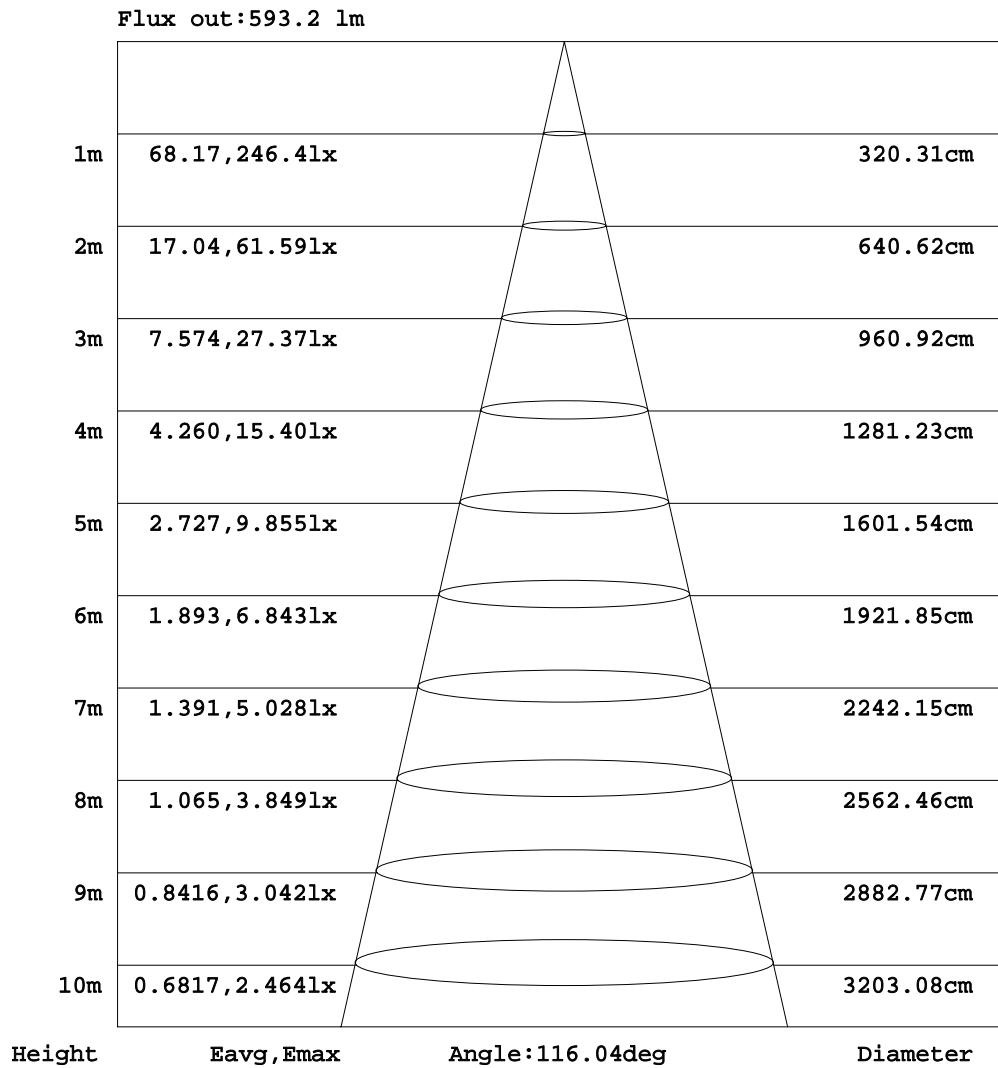


C Range: 0 - 90DEG
 C Interval: 15.0DEG
 Test Speed: HIGH
 Temperature: 25.3DEG
 Operators:
 Test Date: 2019-01-11

γ Range: 0 - 180DEG
 γ Interval: 1.0DEG
 Test System: EVERFINE GO-2000A_V1 SYSTEM V2.0.362
 Humidity: 65.0%
 Test Distance: 12.226m [K=1.0000]
 Remarks:

AAI Figure

NAME: FL	TYPE:	WEIGHT:
SPEC.:LWF-132400W120-LP	DIM.: L=1M	SERIAL No.:
MFR.: LEDWIDE LIGHTING CO., LTD	SUR.:0.008*1	Shielding Angle:

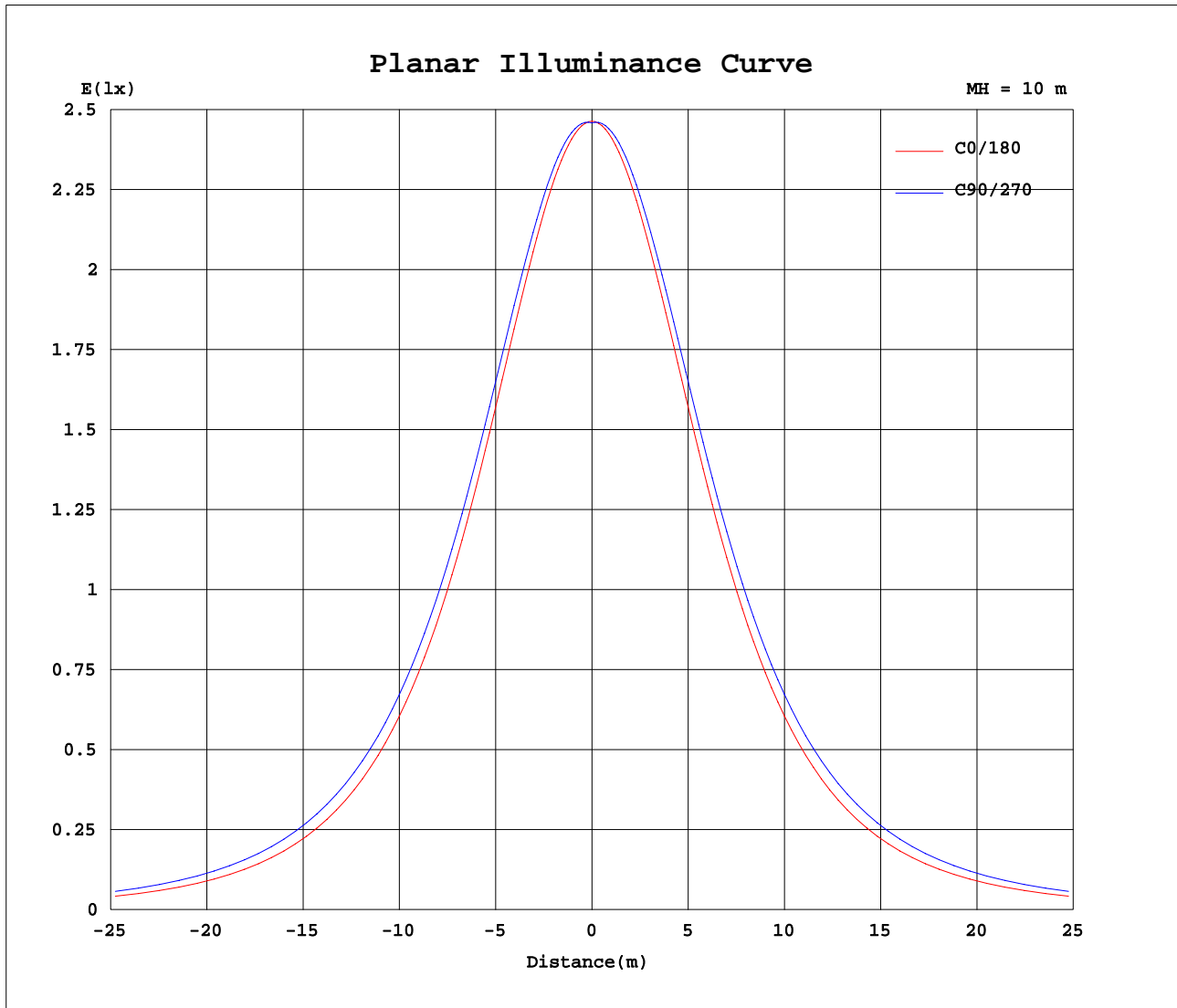


Note:The Curves indicate the illuminated area and the average illumination when the luminaire is at different distance.

C Range: 0 - 90DEG
 C Interval: 15.0DEG
 Test Speed: HIGH
 Temperature:25.3DEG
 Operators:
 Test Date:2019-01-11

γ Range: 0 - 180DEG
 γ Interval: 1.0DEG
 Test System:EVERFINE GO-2000A_V1 SYSTEM V2.0.362
 Humidity:65.0%
 Test Distance:12.226m [K=1.0000]
 Remarks:

Planar Illuminance Curve



C Range: 0 - 90DEG
 C Interval: 15.0DEG
 Test Speed: HIGH
 Temperature: 25.3DEG
 Operators:
 Test Date: 2019-01-11

γ Range: 0 - 180DEG
 γ Interval: 1.0DEG
 Test System: EVERFINE GO-2000A_V1 SYSTEM V2.0.362
 Humidity: 65.0%
 Test Distance: 12.226m [K=1.0000]
 Remarks:

LUMINOUS DISTRIBUTION INTENSITY DATA

NAME: FL	TYPE:	WEIGHT:
SPEC.:LWF-132400W120-LP	DIM.: L=1M	SERIAL No.:
MFR.: LEDWIDE LIGHTING CO., LTD	SUR.:0.008*1	Shielding Angle:

Table--1

UNIT: cd

C(DEG) γ (DEG)	0	15	30	45	60	75	90	105	120	135	150	165	180	195	210	225	240	255	270
0	246	246	246	246	246	246	246	246	246	246	246	246	246	246	246	246	246	246	246
5	245	246	246	246	247	247	247	247	247	246	246	246	245	246	246	246	247	247	247
10	242	243	245	245	246	246	246	246	246	245	245	243	242	243	245	245	246	246	246
15	237	239	241	242	243	243	244	243	243	242	241	239	237	239	241	242	243	243	244
20	231	234	236	237	238	239	239	239	238	237	236	234	231	234	236	237	238	239	239
25	222	226	228	230	232	232	233	232	232	230	228	226	222	226	228	230	232	232	233
30	212	216	219	222	224	224	225	224	224	222	219	216	212	216	219	222	224	224	225
35	200	205	209	212	214	215	215	215	214	212	209	205	200	205	209	212	214	215	215
40	186	192	196	200	202	203	203	203	202	200	196	192	186	192	196	200	202	203	203
45	171	177	182	186	188	190	190	190	188	186	182	177	171	177	182	186	188	190	190
50	154	161	166	170	173	175	175	175	173	170	166	161	154	161	166	170	173	175	175
55	135	143	148	153	156	158	159	158	156	153	148	143	135	143	148	153	156	158	159
60	115	123	129	135	138	140	141	140	138	135	129	123	115	123	129	135	138	140	141
65	93.5	102	109	115	118	121	121	121	118	115	109	102	93.5	102	109	115	118	121	121
70	70.8	80.3	87.5	94.0	97.7	100	101	100	97.7	94.0	87.5	80.3	70.8	80.3	87.5	94.0	97.7	100	101
75	48.1	57.6	65.6	72.4	76.4	79.3	80.0	79.3	76.4	72.4	65.6	57.6	48.1	57.6	65.6	72.4	76.4	79.3	80.0
80	27.1	36.1	44.1	51.0	55.2	58.5	59.5	58.5	55.2	51.0	44.1	36.1	27.1	36.1	44.1	51.0	55.2	58.5	59.5
85	10.2	17.8	24.7	31.1	35.5	38.9	40.3	38.9	35.5	31.1	24.7	17.8	10.2	17.8	24.7	31.1	35.5	38.9	40.3
90	0.49	5.83	10.3	15.3	19.2	22.5	23.7	22.5	19.2	15.3	10.3	5.83	0.49	5.83	10.3	15.3	19.2	22.5	23.7
95	0.48	0.62	1.85	4.19	7.11	8.83	11.3	8.83	7.11	4.19	1.85	0.62	0.48	0.62	1.85	4.19	7.11	8.83	11.3
100	0.74	0.67	0.71	1.23	2.28	3.22	4.56	3.22	2.28	1.23	0.71	0.67	0.74	0.67	0.71	1.23	2.28	3.22	4.56
105	1.04	0.92	0.76	0.85	0.90	0.84	1.39	0.84	0.90	0.85	0.76	0.92	1.04	0.92	0.76	0.85	0.90	0.84	1.39
110	1.34	1.20	0.99	1.02	0.89	0.97	1.40	0.97	0.89	1.02	0.99	1.20	1.34	1.20	0.99	1.02	0.89	0.97	1.40
115	1.60	1.50	1.28	1.30	1.18	1.24	1.53	1.24	1.18	1.30	1.28	1.50	1.60	1.50	1.28	1.30	1.18	1.24	1.53
120	1.84	1.77	1.55	1.57	1.48	1.53	1.63	1.53	1.48	1.57	1.55	1.77	1.84	1.77	1.55	1.57	1.48	1.53	1.63
125	2.03	1.99	1.82	1.86	1.77	1.83	1.67	1.83	1.77	1.86	1.82	1.99	2.03	1.99	1.82	1.86	1.77	1.83	1.67
130	2.23	2.20	2.06	2.13	2.06	2.11	1.90	2.11	2.06	2.13	2.06	2.20	2.23	2.20	2.06	2.13	2.06	2.11	1.90
135	2.38	2.38	2.27	2.38	2.33	2.38	2.20	2.38	2.33	2.38	2.27	2.38	2.38	2.38	2.27	2.38	2.33	2.38	2.20
140	2.49	2.57	2.49	2.61	2.55	2.60	2.45	2.60	2.55	2.61	2.49	2.57	2.49	2.57	2.49	2.61	2.55	2.60	2.45
145	2.63	2.74	2.67	2.82	2.75	2.81	2.62	2.81	2.75	2.82	2.67	2.74	2.63	2.74	2.67	2.82	2.75	2.81	2.62
150	2.77	2.92	2.88	3.03	2.99	3.00	2.76	3.00	2.99	3.03	2.88	2.92	2.77	2.92	2.88	3.03	2.99	3.00	2.76
155	2.93	3.10	3.06	3.21	3.13	3.15	2.99	3.15	3.13	3.21	3.06	3.10	2.93	3.10	3.06	3.21	3.13	3.15	2.99
160	3.10	3.24	3.21	3.34	3.27	3.27	3.17	3.27	3.27	3.34	3.21	3.24	3.10	3.24	3.21	3.34	3.27	3.27	3.17
165	3.25	3.39	3.36	3.48	3.39	3.42	3.36	3.42	3.39	3.48	3.36	3.39	3.25	3.39	3.36	3.48	3.39	3.42	3.36
170	3.48	3.60	3.54	3.64	3.56	3.59	3.59	3.59	3.56	3.64	3.54	3.60	3.48	3.60	3.54	3.64	3.56	3.59	3.59
175	3.70	3.76	3.75	3.83	3.76	3.78	3.77	3.78	3.76	3.83	3.75	3.76	3.70	3.76	3.75	3.83	3.76	3.78	3.77
180	3.88	3.89	3.88	3.90	3.95	4.01	4.05	4.01	3.95	3.90	3.88	3.89	3.88	3.89	3.88	3.90	3.95	4.01	4.05

C Range: 0 - 90DEG
 C Interval: 15.0DEG
 Test Speed: HIGH
 Temperature:25.3DEG
 Operators:
 Test Date:2019-01-11

γ Range: 0 - 180DEG
 γ Interval: 1.0DEG
 Test System:EVERFINE GO-2000A_V1 SYSTEM V2.0.362
 Humidity:65.0%
 Test Distance:12.226m [K=1.0000]
 Remarks:

LUMINOUS DISTRIBUTION INTENSITY DATA

NAME: FL	TYPE:	WEIGHT:
SPEC.:LWF-132400W120-LP	DIM.: L=1M	SERIAL No.:
MFR.: LEDWIDE LIGHTING CO., LTD	SUR.:0.008*1	Shielding Angle:

Table--2

UNIT: cd

C(DEG)\ γ (DEG)	285	300	315	330	345														
0	246	246	246	246	246														
5	247	247	246	246	246														
10	246	246	245	245	243														
15	243	243	242	241	239														
20	239	238	237	236	234														
25	232	232	230	228	226														
30	224	224	222	219	216														
35	215	214	212	209	205														
40	203	202	200	196	192														
45	190	188	186	182	177														
50	175	173	170	166	161														
55	158	156	153	148	143														
60	140	138	135	129	123														
65	121	118	115	109	102														
70	100	97.7	94.0	87.5	80.3														
75	79.3	76.4	72.4	65.6	57.6														
80	58.5	55.2	51.0	44.1	36.1														
85	38.9	35.5	31.1	24.7	17.8														
90	22.5	19.2	15.3	10.3	5.83														
95	8.83	7.11	4.19	1.85	0.62														
100	3.22	2.28	1.23	0.71	0.67														
105	0.84	0.90	0.85	0.76	0.92														
110	0.97	0.89	1.02	0.99	1.20														
115	1.24	1.18	1.30	1.28	1.50														
120	1.53	1.48	1.57	1.55	1.77														
125	1.83	1.77	1.86	1.82	1.99														
130	2.11	2.06	2.13	2.06	2.20														
135	2.38	2.33	2.38	2.27	2.38														
140	2.60	2.55	2.61	2.49	2.57														
145	2.81	2.75	2.82	2.67	2.74														
150	3.00	2.99	3.03	2.88	2.92														
155	3.15	3.13	3.21	3.06	3.10														
160	3.27	3.27	3.34	3.21	3.24														
165	3.42	3.39	3.48	3.36	3.39														
170	3.59	3.56	3.64	3.54	3.60														
175	3.78	3.76	3.83	3.75	3.76														
180	4.01	3.95	3.90	3.88	3.89														

C Range: 0 - 90DEG
 C Interval: 15.0DEG
 Test Speed: HIGH
 Temperature:25.3DEG
 Operators:
 Test Date:2019-01-11

γ Range: 0 - 180DEG
 γ Interval: 1.0DEG
 Test System:EVERFINE GO-2000A_V1 SYSTEM V2.0.362
 Humidity:65.0%
 Test Distance:12.226m [K=1.0000]
 Remarks: