



Ledwide Standard  
Linear Profile  
Range 2023-2024



# Ledwide Company Presentation



Company

LEDWIDE Lighting, **established in 2010**, specializes in designs, develops and manufactures custom-made LED lighting for architectural, residential and commercial industries. From concept or enquiry to development and production of all the elements. Our products are based on proprietary aluminum extrusions for strength and cool operation. Our light engines are assembled to customer specifications addressing brightness, color temperature, and efficiency.

We work together with lighting wholesalers, lighting designers, architects to provide the end user with the perfect solution for their applications in **40+ countries**.

## Graphics Department

LEDWIDE Lighting has a graphics design department that designs every single product package, the annual catalogue and website. All product photos are taken in our own photo studio.

## Technical Department

All our products go through all tests required by different lighting standards in order to satisfy the requirements of our international customers. All our products comply with the latest CE, RoHS and EMC standards.

## Our Warehouse

All our products are stored in our 1500m<sup>2</sup> warehouse in Shenzhen. The warehouse has stock of all necessary materials for short deliveries.



Reception



Office



Production



Production

Will Wang  
Manage Director



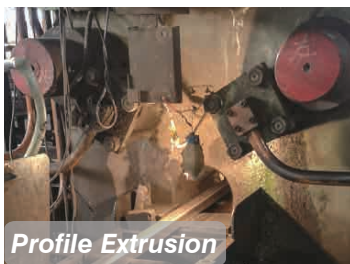
# Profiles Manufacturing



Aluminum Billet



Aluminum Profile Die



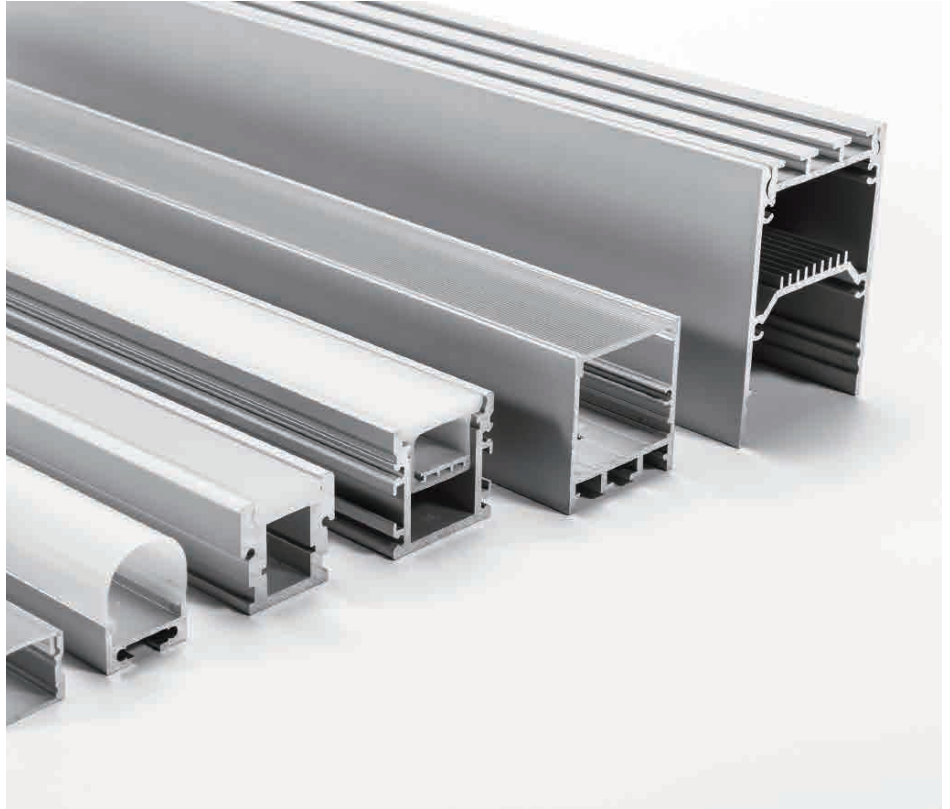
Profile Extrusion



Profile Anodizing



Powder coating



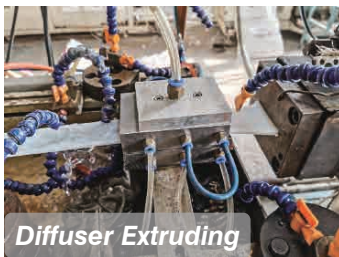
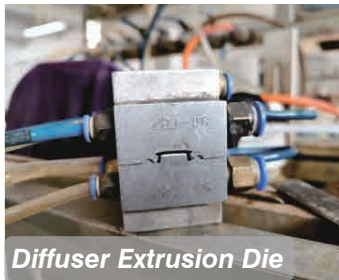
The vast majority of profiles in this catalog have been conceived, **designed by Ledwide and manufactured in Foshan city** (our joint venture factory). For this we have used **an excellent raw material** and have been manufactured under quality standards more demanding and rigorous in **profile dies, extruding, anodized, polishing and powder coating** etc ...

Quality aluminum profile (5 years warranty) with tolerances that are following European Directives: LVD 2014/35/EU, EN 62493:2015; EN 62471:2008. The alloy used is **6063** starting from an aluminum "billet" with a purity between 95-98% and applying a T5 treatment.

The anodized ones we have made from thickness of 1.2mm to 3.5mm for better heat dissipation, and a **max. length 6000mm**.



# Lens / Diffusers Manufacturing



Ledwide using monomer from **Germany Brand “Evonik” UV resistant** PMMA/Acrylic diffusers ( at least 2 years warranty) to suit most of ALU profile extrusions.

PMMA: a material with **high optical performances**, used in applications involving highest transparency and great diffusing properties.

Using LED CONTROL colors, great performances in LED lighting are ensured, like the **invisibility of spots and an excellent transmission-diffusion ration.**

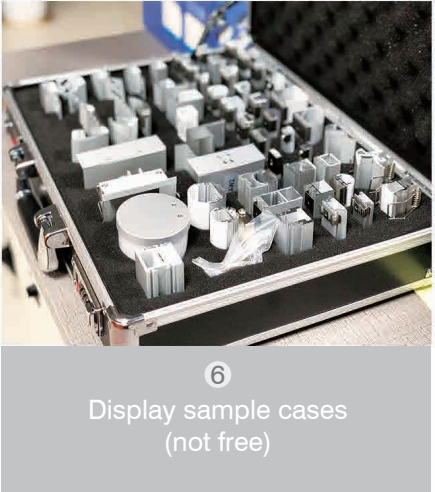
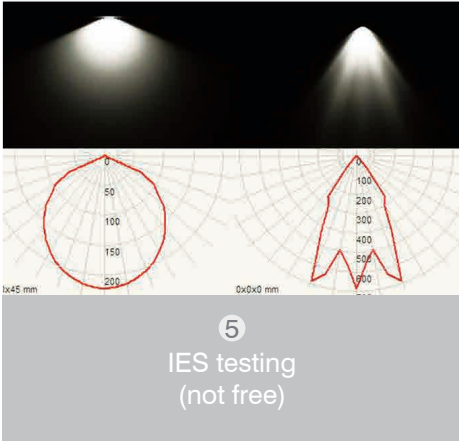
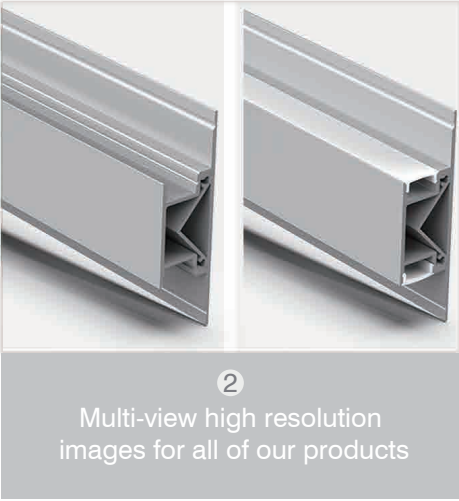
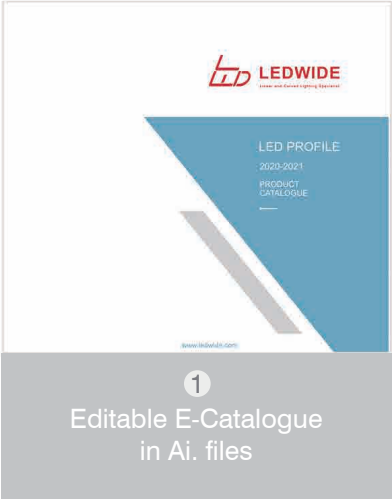
PMMA, which is actually a fragile material, but Ledwide has successfully reinforced with **HIGH-IMPACT resistant material, more flexible** and can be rolled package for easy delivery.

Also for this material, LEDWIDE offers finishes like Opal, Frosted, Milky, Transparent, colored, striped, microprismatic. PMMA is a **UV-resistant material**, so no further protections are required.

Thanks to the blend of different materials diffusion effects are obtained, that result in high transparency, completely **hiding the LED-Spots.**

A great innovation for LED-Lamps satisfying all customer's requests in term of esthetic and functionality, colours, flexibility and innovation.

Ledwide is offering our long term customers following services helps your businesses to take competitive advantage over others.



And so on...  
We are always growing together with our customers.

# Index

## SURFACE



LW-AS9  
page 11



LW-AS5  
page 11



LW-AS1  
page 11



LW-AL60  
page 11



LW-AST1  
page 11



LW-MD  
page 12



LW-AS2  
page 12



LW-B1  
page 12



LW-AS6  
page 12



LW-AS3  
page 12

## RECESSED



LW-AR9  
page 15



LW-AR1  
page 15



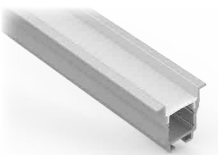
LW-AR2  
page 15



LW-AR3  
page 15



LW-ARD1  
page 16



LW-ARD2  
page 16



LW-AR10  
page 16

## ANGLED



LW-AC8N  
page 19



LW-AC1  
page 19



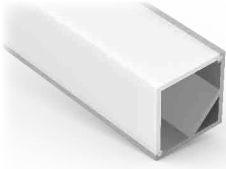
LW-AC2  
page 19



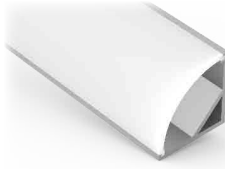
LW-AC3  
page 19



LW-AV2  
page 20



LW-AC4  
page 20



LW-AC5  
page 20



LW-AW7  
page 20

## SURFACE & SUSPENSION



LW-AS1N-H  
page 23



LW-AT11  
page 23



LW-AT4  
page 23



LW-AT5  
page 24



LW-AT6  
page 24



LW-AT16-11  
page 24



LW-AT16-30  
page 25



LW-AT16-60  
page 25



LW-US20  
page 25



LW-C25H  
page 26



LW-AT15  
page 26



LW-AT15-30  
page 26



LW-AT15-60  
page 26



LW-U20  
page 27



LW-AT28  
page 27



LW-CS35D  
page 27

## FLOOR & WATERPROOF



LW-AA  
page 30



LW-AB  
page 30



LW-AF1  
page 30



LW-AF2  
page 30



LW-WP3N  
page 31



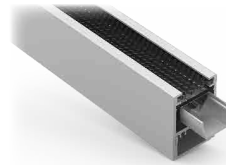
LW-WP3N-30  
page 31



LW-WP3N-60  
page 31



LW-WP3-T3  
page 31



LW-WP3-T3-30  
page 32



LW-WP3-T3-60  
page 32

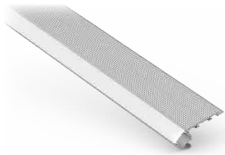


LW-AF3  
page 32

## STAIR & STEP



LW-ST2  
page 35



LW-ST1  
page 35



LW-STR3  
page 35

## TUBE & WARDROBE



LW-R24  
page 38



LW-R30  
page 38



LW-R34  
page 38



LW-R60  
page 38



LW-R75  
page 38

## WALL



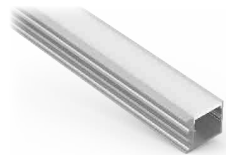
LW-AW1  
page 41



LW-AW2  
page 41



LW-AW8  
page 41



LW-AW35  
page 42



LW-AW4-1  
page 42





LW-AW5-1  
page 42

## DRIVER BUILT-IN



LW-P35  
page 45



LW-P46  
page 45



LW-P50N  
page 46



LW-P60  
page 46



LW-P74  
page 47

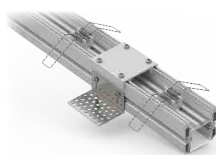


LW-P74N  
page 47

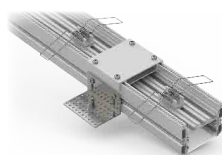
## TRIMLESS-ARCHITECTURAL



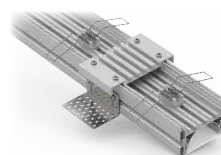
LW-TR35N  
page 50



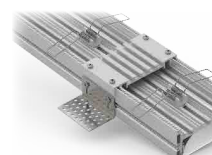
LW-TR35  
page 50



LW-TR50  
page 50



LW-TR60  
page 51



LW-TR80  
page 51

## SURFACE & SUSPENDED-ARCHITECTURAL



LW-P24  
page 54



LW-WN35-25  
page 54



LW-WN35  
page 54



LW-E50  
page 55



LW-E60  
page 55



LW-EU60  
page 55



LW-E80  
page 56



LW-EU80  
page 56



LW-W91  
page 56

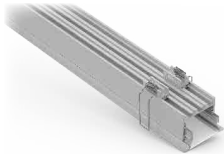


LW-E100  
page 57

## RECESSED-ARCHITECTURAL



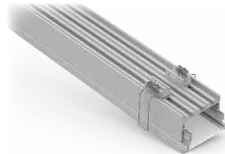
LW-WN31  
page 59



LW-ER50  
page 59



LW-PR50N  
page 59



LW-ER60  
page 60

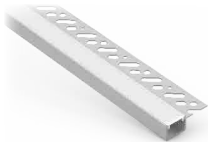


LW-ER80  
page 60

## PLASTER-IN



LW-CT9  
page 63



LW-CT5S  
page 63



LW-CT5  
page 63



LW-CT6  
page 63



LW-CT7  
page 63



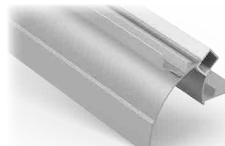
LW-CT4N  
page 64



LW-AT7N-1  
page 64



LW-CTD1  
page 64



LW-CTV1  
page 64



LW-CTV2  
page 65



LW-CT38  
page 65

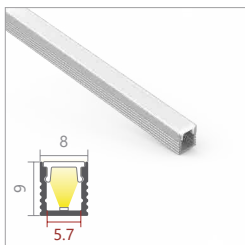
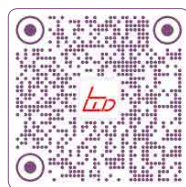
## COVE FRAME SYSTEM



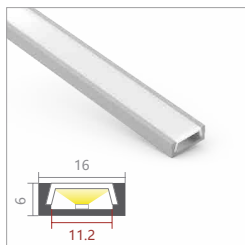
LW-KN1  
page 68

# SURFACE

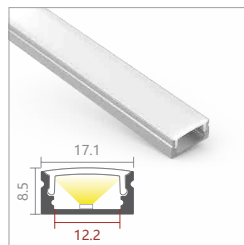
Page 10 - 11



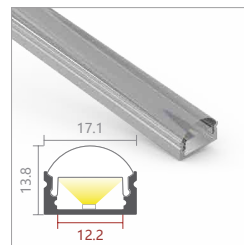
LW-AS9



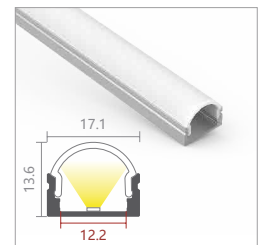
LW-AS5



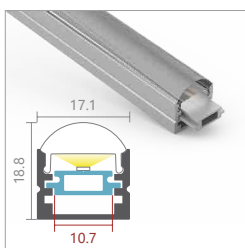
LW-AS1



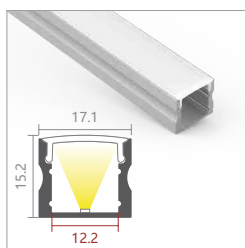
LW-AL60



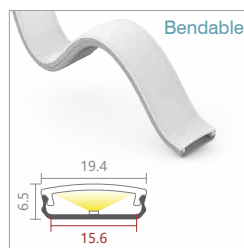
LW-AST1



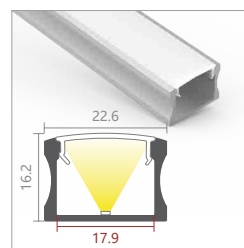
LW-MD



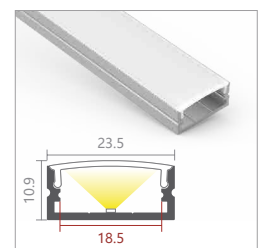
LW-AS2



LW-B1



LW-AS6

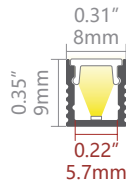


LW-AS3

## LW-AS9



50°



## PC Diffuser

Code: AS9-O (Opal, light trans. > 45%)



6.8

## PMMA Diffuser

Code: AS9-B (Black, light trans. > 24%)

(can be 25m/roll)

## Accessories



**Plastic endcap**  
Code: AS9-CAP  
Code: AS9-CAP-H

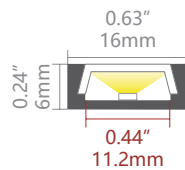
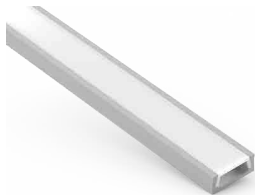


**Metal clip**  
Code: AS9-CLIP-M

## LW-AS5



100°



## PC Diffuser

Code: D002-O (Opal, light trans. > 72%)  
Code: D002-F (Frost, light trans. > 79%)  
Code: D002-C (Clear, light trans. > 97%)



12.8

(can be 25m/roll)

## Accessories



**Plastic endcap**  
Code: AS5-CAP  
Code: AS5-CAP-H

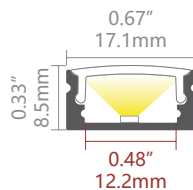


**Metal clip**  
Code: AS4-CLIP-M

## LW-AS1



100°



## PMMA Diffuser

Code: D001-O (Opal, light trans. > 58%)  
Code: D001-M (Milky, light trans. > 75%)  
Code: D001-F (Frost, light trans. > 88%)  
Code: D001-C (Clear, light trans. > 97%)  
Code: D001-B (Black, light trans. > 21%)



15.8

(can be 25m/roll)

## Accessories



**Plastic endcap**  
Code: AS1-CAP  
Code: AS1-CAP-H



**Metal clip**  
Code: AS1-CLIP-M



**Plastic clip**  
Code: AS1-CLIP-P  
(optional)

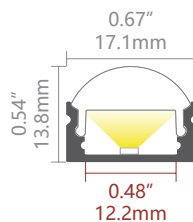


**Adjustable clip**  
Code: AS1-CLIP-A  
(optional)

## LW-AL60

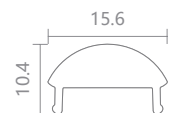


60°



## PC Diffuser

Code: D004-S-C (Semi-clear, light trans. > 180%)



15.6

## Accessories



**Plastic endcap**  
Code: AL60-CAP  
Code: AL60-CAP-H



**Metal clip**  
Code: AS1-CLIP-M



**Plastic clip**  
Code: AS1-CLIP-P  
(optional)

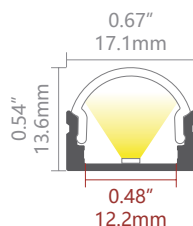


**Adjustable clip**  
Code: AS1-CLIP-A  
(optional)

## LW-AST1



100°



## PMMA Diffuser

Code: D009-M (Milky, light trans. > 60%)  
Code: D009-C (Clear, light trans. > 95%)



15.7

## Accessories



**Plastic endcap**  
Code: AL60-CAP  
Code: AL60-CAP-H



**Metal clip**  
Code: AS1-CLIP-M

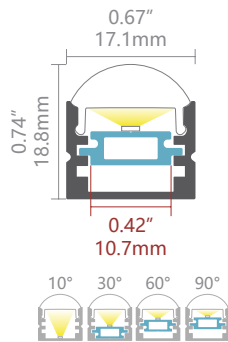


**Plastic clip**  
Code: AS1-CLIP-P  
(optional)



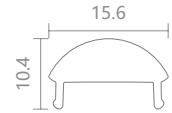
**Adjustable clip**  
Code: AS1-CLIP-A  
(optional)

## LW-MD

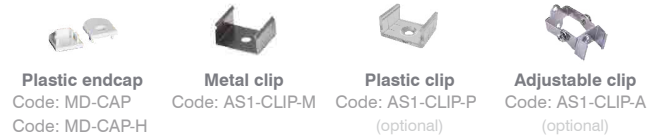


## PC Diffuser

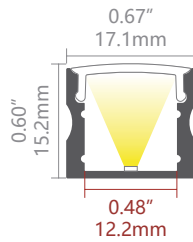
Code: D004-S-C (Semi-clear, light trans. > 180%)



## Accessories

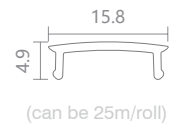


## LW-AS2

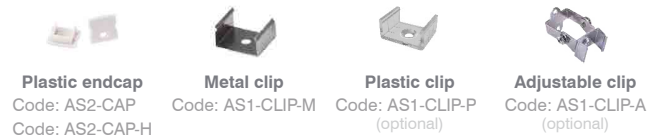


## PMMA Diffuser

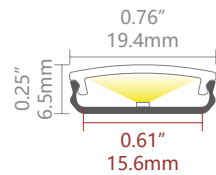
Code: D001-O (Opal, light trans. > 58%)  
 Code: D001-M (Milky, light trans. > 75%)  
 Code: D001-F (Frost, light trans. > 88%)  
 Code: D001-C (Clear, light trans. > 97%)  
 Code: D001-B (Black, light trans. > 21%)



## Accessories

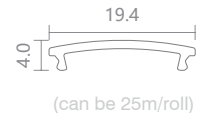


## LW-B1 Bendable



## PMMA Diffuser

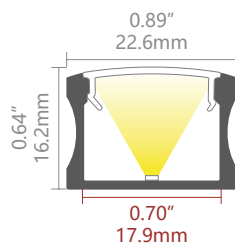
Code: AT11-O (Opal, light trans. > 69%)  
 Code: AT11-F (Frost, light trans. > 83%)  
 Code: AT11-C (Clear, light trans. > 89%)



## Accessories

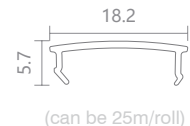


## LW-AS6

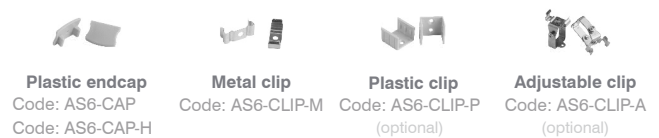


## PMMA Diffuser

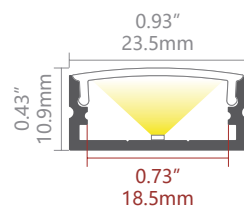
Code: AS6-O (Opal, light trans. > 60%)  
 Code: AS6-F (Frost, light trans. > 86%)  
 Code: AS6-B (Black, light trans. > 26%)



## Accessories



## LW-AS3

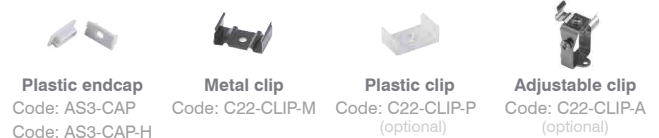


## PMMA Diffuser

Code: D003-O (Opal, light trans. > 70%)  
 Code: D003-M (Milky, light trans. > 78%)  
 Code: D003-F (Frost, light trans. > 91%)  
 Code: D003-C (Clear, light trans. > 94%)  
 Code: D003-B (Black, light trans. > 20%)



## Accessories

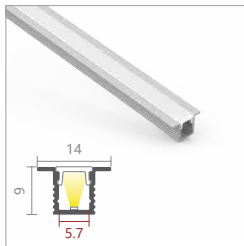
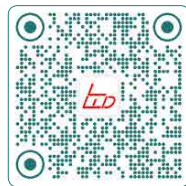




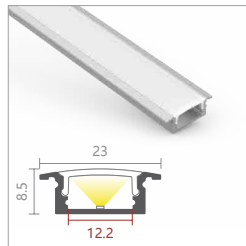


# RECESSED

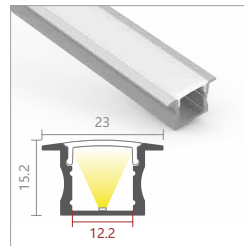
Page 14 - 17



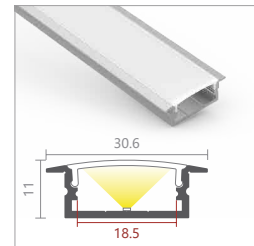
LW-AR9



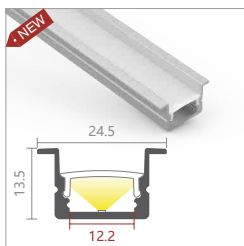
LW-AR1



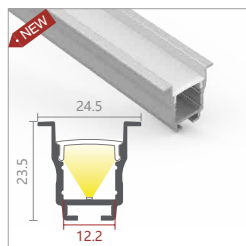
LW-AR2



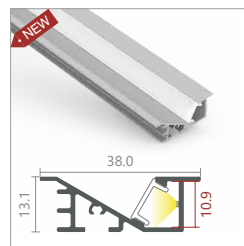
LW-AR3



LW-ARD1

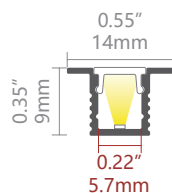


LW-ARD2



LW-AR10

## LW-AR9



### PC Diffuser

Code: AS9-O (Opal, light trans. > 45%)



### PMMA Diffuser

Code: AS9-B (Black, light trans. > 24%)

(can be 25m/roll)

### Accessories



#### Plastic endcap

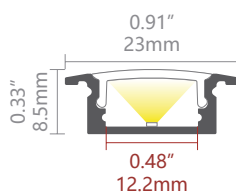
Code: AR9-CAP  
Code: AR9-CAP-H



#### Metal clip

Code: AS9-CLIP-M  
(optional)

## LW-AR1



### PMMA Diffuser

Code: D001-O (Opal, light trans. > 58%)  
Code: D001-M (Milky, light trans. > 75%)  
Code: D001-F (Frost, light trans. > 88%)  
Code: D001-C (Clear, light trans. > 97%)  
Code: D001-B (Black, light trans. > 21%)



(can be 25m/roll)

### Accessories



#### Plastic endcap

Code: AR1-CAP  
Code: AR1-CAP-H



#### Metal clip

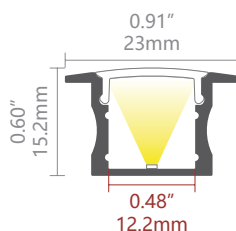
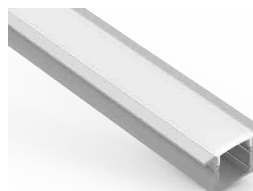
Code: AS1-CLIP-M  
(optional)



#### Plastic clip

Code: AS1-CLIP-P  
(optional)

## LW-AR2



### PMMA Diffuser

Code: D001-O (Opal, light trans. > 58%)  
Code: D001-M (Milky, light trans. > 75%)  
Code: D001-F (Frost, light trans. > 88%)  
Code: D001-C (Clear, light trans. > 97%)  
Code: D001-B (Black, light trans. > 21%)



(can be 25m/roll)

### Accessories



#### Plastic endcap

Code: AR2-CAP  
Code: AR2-CAP-H



#### Metal clip

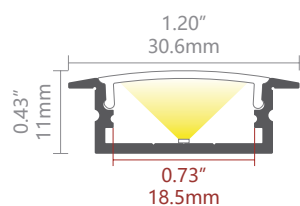
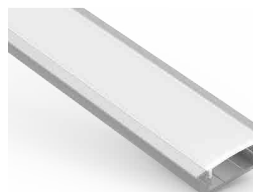
Code: AS1-CLIP-M  
(optional)



#### Plastic clip

Code: AS1-CLIP-P  
(optional)

## LW-AR3



### PMMA Diffuser

Code: D003-O (Opal, light trans. > 70%)  
Code: D003-M (Milky, light trans. > 78%)  
Code: D003-F (Frost, light trans. > 91%)  
Code: D003-C (Clear, light trans. > 94%)  
Code: D003-B (Black, light trans. > 20%)



(can be 25m/roll)

### Accessories



#### Plastic endcap

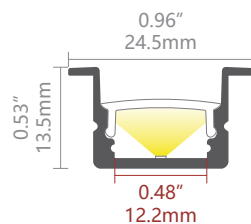
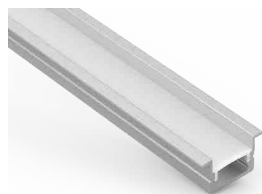
Code: AR3-CAP  
Code: AR3-CAP-H



#### Metal clip

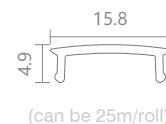
Code: C22-CLIP-M  
(optional)

## LW-ARD1 NEW



### PMMA Diffuser

Code: D001-O (Opal, light trans. > 58%)  
 Code: D001-M (Milky, light trans. > 75%)  
 Code: D001-F (Frost, light trans. > 88%)  
 Code: D001-C (Clear, light trans. > 97%)  
 Code: D001-B (Black, light trans. > 21%)



(can be 25m/roll)

### Accessories



**Plastic endcap**  
 Code: ARD1-CAP  
 Code: ARD1-CAP-H

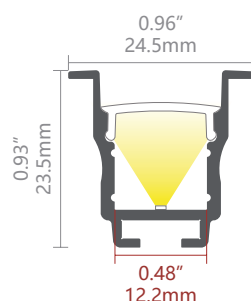
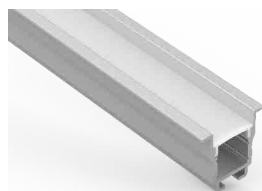


**Metal clip**  
 Code: AS1-CLIP-M  
 (optional)



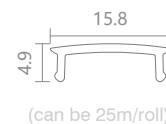
**Plastic clip**  
 Code: AS1-CLIP-P  
 (optional)

## LW-ARD2 NEW



### PMMA Diffuser

Code: D001-O (Opal, light trans. > 58%)  
 Code: D001-M (Milky, light trans. > 75%)  
 Code: D001-F (Frost, light trans. > 88%)  
 Code: D001-C (Clear, light trans. > 97%)  
 Code: D001-B (Black, light trans. > 21%)



(can be 25m/roll)

### Accessories



**Plastic endcap**  
 Code: ARD2-CAP  
 Code: ARD2-CAP-H



**Spring clip**  
 Code: SC-AW6



**Joiner 90°A**  
 Code: J-90A  
 (optional)

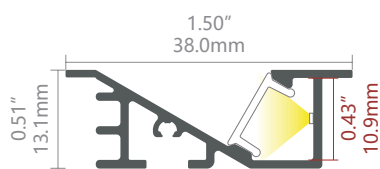


**Joiner 90°B**  
 Code: J-90B  
 (optional)



**Joiner 180°A**  
 Code: J-180A  
 (optional)

## LW-AR10 NEW



### PC Diffuser

Code: AR10-O (Opal, light trans. > 58%)



### Accessories



**Aluminium endcap**  
 Code: AR10-CAP  
 Code: AR10-CAP-H



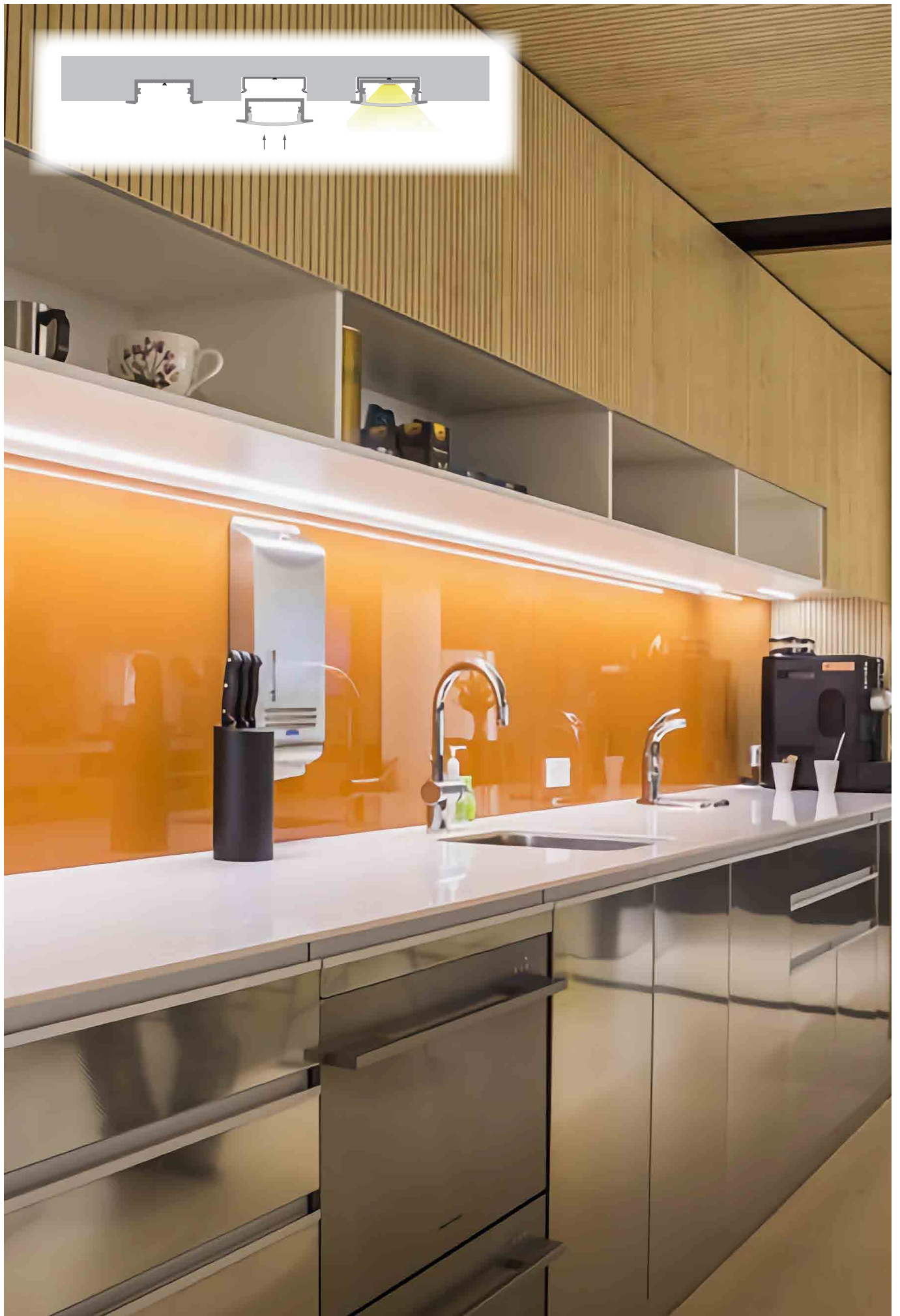
**Joiner 90°A**  
 Code: J-90A  
 (optional)



**Joiner 180°A**  
 Code: J-180A  
 (optional)



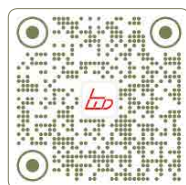
**Spring clip**  
 Code: SC-AW6



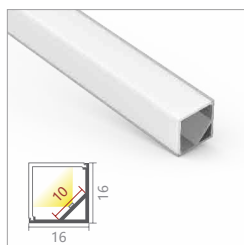


# ANGLED

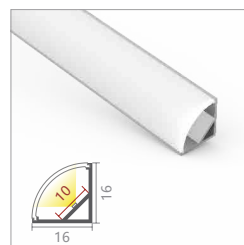
Page 18 - 21



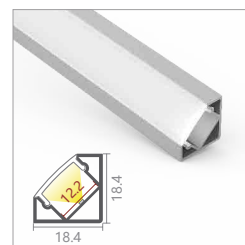
LW-AC8N



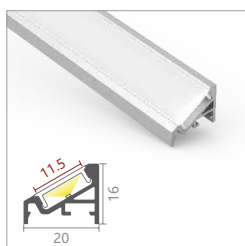
LW-AC1



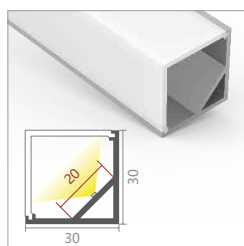
LW-AC2



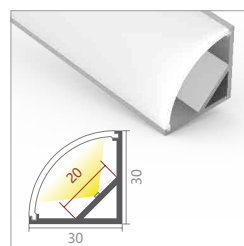
LW-AC3



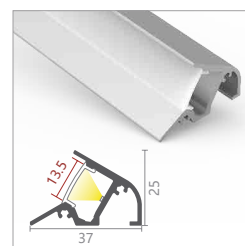
LW-AV2



LW-AC4

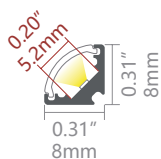


LW-AC5



LW-AW7

## LW-AC8N EXCLUSIVE IN KW NEW



## PC Diffuser

Code: AC8-O (Opal, light trans. > 70%)



## Accessories



### Plastic endcap

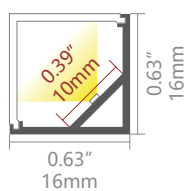
Code: AC8-CAP  
Code: AC8-CAP-H



### Metal clip

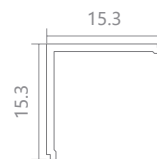
Code: AC8-CLIP-M

## LW-AC1



## PMMA Diffuser

Code: AC1-O (Opal, light trans. > 43%)  
Code: AC1-M (Milky, light trans. > 49%)  
Code: AC1-F (Frost, light trans. > 54%)  
Code: AC1-C (Clear, light trans. > 57%)



## Accessories



### Plastic endcap

Code: AC1-CAP  
Code: AC1-CAP-H



### Metal clip

Code: AC1-CLIP-M



### Plastic clip

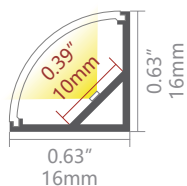
Code: AC1-CLIP-P  
(optional)



### Adjustable clip

Code: AC1-CLIP-A  
(optional)

## LW-AC2



## PMMA Diffuser

Code: AC2-O (Opal, light trans. > 55%)  
Code: AC2-M (Milky, light trans. > 61%)  
Code: AC2-F (Frost, light trans. > 70%)  
Code: AC2-C (Clear, light trans. > 76%)  
Code: AC2-B (Black, light trans. > 21%)



## Accessories



### Plastic endcap

Code: AC2-CAP  
Code: AC2-CAP-H



### Metal clip

Code: AC1-CLIP-M



### Plastic clip

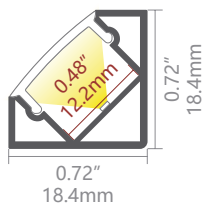
Code: AC1-CLIP-P  
(optional)



### Adjustable clip

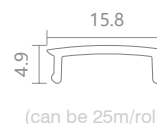
Code: AC1-CLIP-A  
(optional)

## LW-AC3



## PMMA Diffuser

Code: D001-O (Opal, light trans. > 58%)  
Code: D001-M (Milky, light trans. > 75%)  
Code: D001-F (Frost, light trans. > 88%)  
Code: D001-C (Clear, light trans. > 97%)  
Code: D001-B (Black, light trans. > 21%)



(can be 25m/roll)

## Accessories



### Plastic endcap

Code: AC3-CAP  
Code: AC3-CAP-H



### Metal clip

Code: AC3-CLIP-M



### Plastic clip

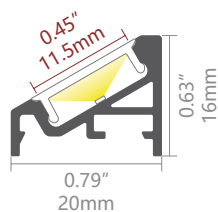
Code: AC3-CLIP-P  
(optional)



### Adjustable clip

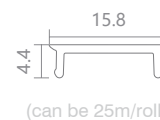
Code: AC3-CLIP-A  
(optional)

## LW-AV2



## PMMA Diffuser

Code: D001-O FLAT (Opal, light trans. > 68%)



### Accessories



**Plastic endcap**  
Code: AV2-CAP-L  
Code: AV2-CAP-R



**Metal clip**  
Code: US20-CLIP-M



**Joiner 60°B**  
Code: J-60B  
(optional)



**Joiner 90°A**  
Code: J-90A  
(optional)



**Joiner 90°B**  
Code: J-90B  
(optional)



**Joiner 120°A**  
Code: J-120A  
(optional)

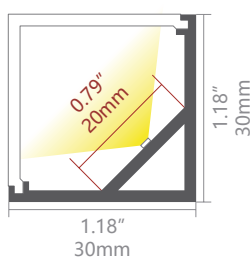
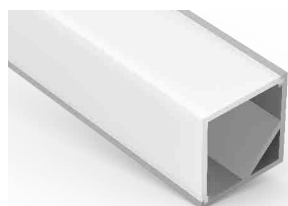


**Joiner 120°B**  
Code: J-120B  
(optional)



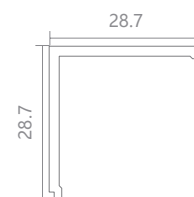
**Joiner 180°A**  
Code: J-180A  
(optional)

## LW-AC4



## PC Diffuser

Code: AC4-O (Opal, light trans. > 41%)  
Code: AC4-F (Frost, light trans. > 43%)  
Code: AC4-C (Clear, light trans. > 50%)



### Accessories



**Plastic endcap**  
Code: AC4-CAP  
Code: AC4-CAP-H



**Metal clip**  
Code: AC4-CLIP-M

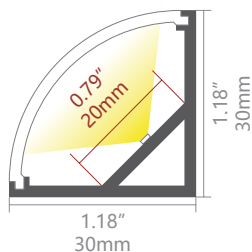
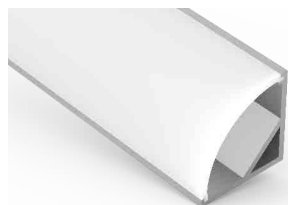


**Plastic clip**  
Code: AC4-CLIP-P  
(optional)



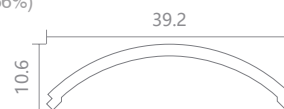
**Adjustable clip**  
Code: AC4-CLIP-A  
(optional)

## LW-AC5



## PC Diffuser

Code: AC5-O (Opal, light trans. > 51%)  
Code: AC5-F (Frost, light trans. > 53%)  
Code: AC5-C (Clear, light trans. > 66%)



### Accessories



**Plastic endcap**  
Code: AC5-CAP  
Code: AC5-CAP-H



**Metal clip**  
Code: AC4-CLIP-M

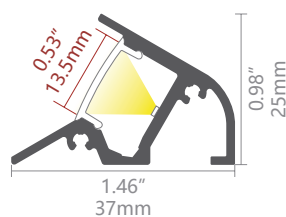


**Plastic clip**  
Code: AC4-CLIP-P  
(optional)



**Adjustable clip**  
Code: AC4-CLIP-A  
(optional)

## LW-AW7



Ceiling Wash



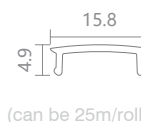
Floor Wash



Wall Wash

## PMMA Diffuser

Code: D001-O (Opal, light trans. > 58%)  
Code: D001-M (Milky, light trans. > 75%)  
Code: D001-F (Frost, light trans. > 88%)  
Code: D001-C (Clear, light trans. > 97%)  
Code: D001-B (Black, light trans. > 21%)



### Accessories

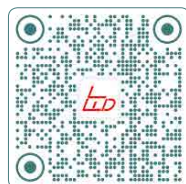


**CNC Aluminium endcap**  
Code: AW7-CAP-L  
Code: AW7-CAP-R



# SURFACE & SUSPENSION

Page 22 - 28



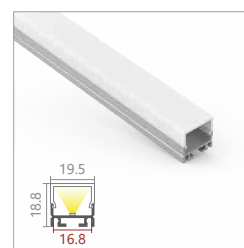
LW-AS1N-H



LW-AT11



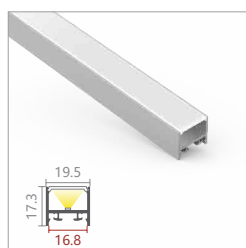
LW-AT4



LW-AT5



LW-AT6



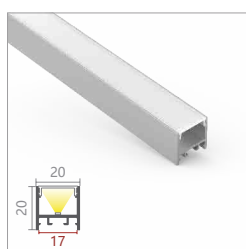
LW-AT16-11



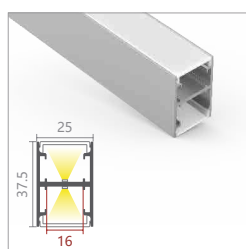
LW-AT16-30



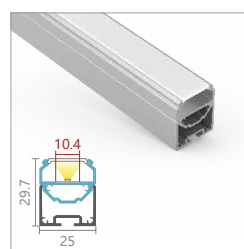
LW-AT16-60



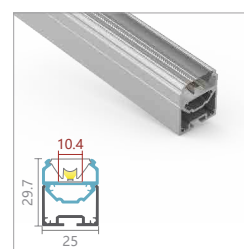
LW-US20



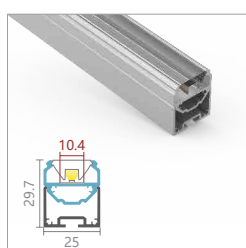
LW-C25H



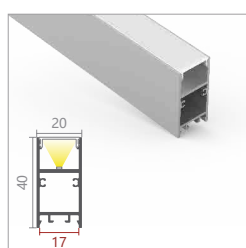
LW-AT15



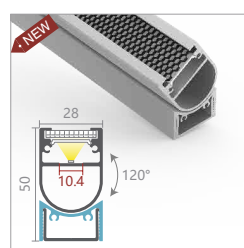
LW-AT15-30



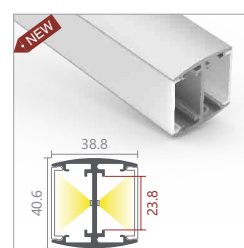
LW-AT15-60



LW-U20



LW-AT28



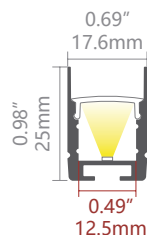
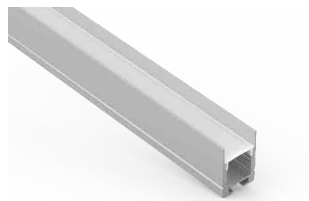
LW-CS35D



## LW-AS1N-H NEW



45°



### PMMA Diffuser

Code: D001-O	(Opal, light trans. > 58%)
Code: D001-M	(Milky, light trans. > 75%)
Code: D001-F	(Frost, light trans. > 88%)
Code: D001-C	(Clear, light trans. > 97%)
Code: D001-B	(Black, light trans. > 21%)



(can be 25m/roll)

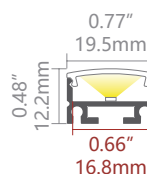
### Accessories

 <b>Plastic endcap</b> Code: AS1N-H-CAP Code: AS1N-H-CAP-H	 <b>Metal clip</b> Code: AS1-CLIP-M	 <b>Adjustable clip</b> Code: AS1-CLIP-A (optional)
 <b>Suspension kits</b> Code: Sus.KitsA (optional)	 <b>Joiner 90°A</b> Code: J-90A (optional)	 <b>Joiner 90°B</b> Code: J-90B (optional)
 <b>Joiner 120°A</b> Code: J-120A (optional)	 <b>Joiner 120°B</b> Code: J-120B (optional)	 <b>Joiner 180°A</b> Code: J-180A (optional)

## LW-AT11



120°



### PMMA Diffuser

Code: AT11-O	(Opal, light trans. > 69%)
Code: AT11-F	(Frost, light trans. > 83%)
Code: AT11-C	(Clear, light trans. > 89%)



(can be 25m/roll)

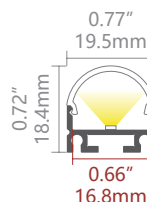
### Accessories

 <b>Aluminium endcap</b> Code: AT11-CAP Code: AT11-CAP-H	 <b>Metal clip</b> Code: AT11-CLIP-M	 <b>Adjustable clip</b> Code: AT11-CLIP-A (optional)
 <b>Suspension kits</b> Code: Sus.KitsA (optional)	 <b>Joiner 90°A</b> Code: J-90A (optional)	 <b>Joiner 90°B</b> Code: J-90B (optional)
 <b>Joiner 120°A</b> Code: J-120A (optional)	 <b>Joiner 120°B</b> Code: J-120B (optional)	 <b>Joiner 180°A</b> Code: J-180A (optional)

## LW-AT4



120°



### PMMA Diffuser

Code: D006-O	(Opal, light trans. > 33%)
Code: D006-F	(Frost, light trans. > 61%)
Code: D006-C	(Clear, light trans. > 65%)



10.2

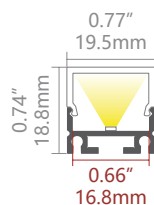
### Accessories

 <b>Plastic endcap</b> Code: AT4-CAP Code: AT4-CAP-H	 <b>Metal clip</b> Code: AT11-CLIP-M	 <b>Adjustable clip</b> Code: AT11-CLIP-A (optional)
 <b>Suspension kits</b> Code: Sus.KitsA (optional)	 <b>Joiner 90°A</b> Code: J-90A (optional)	 <b>Joiner 90°B</b> Code: J-90B (optional)
 <b>Joiner 120°A</b> Code: J-120A (optional)	 <b>Joiner 120°B</b> Code: J-120B (optional)	 <b>Joiner 180°A</b> Code: J-180A (optional)

## LW-AT5



120°



### PMMA Diffuser

Code: D007-O (Opal, light trans. > 51%)  
 Code: D007-M (Milky, light trans. > 56%)  
 Code: D007-F (Frost, light trans. > 65%)  
 Code: D007-C (Clear, light trans. > 73%)  
 Code: D007-B (Black, light trans. > 18%)



### Accessories

#### Plastic endcap

Code: AT5-CAP  
 Code: AT5-CAP-H

#### Metal clip

Code: AT11-CLIP-M

#### Adjustable clip

Code: AT11-CLIP-A  
 (optional)

#### Suspension kits

Code: Sus.KitsA  
 (optional)

#### Joiner 90°A

Code: J-90A  
 (optional)

#### Joiner 90°B

Code: J-90B  
 (optional)

#### Joiner 120°A

Code: J-120A  
 (optional)

#### Joiner 120°B

Code: J-120B  
 (optional)

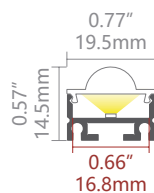
#### Joiner 180°A

Code: J-180A  
 (optional)

## LW-AT6



30°



### PMMA Diffuser

Code: D008-C (Clear, light trans. > 115%)



### Accessories

#### Plastic endcap

Code: AT6-CAP  
 Code: AT6-CAP-H

#### Metal clip

Code: AT11-CLIP-M

#### Adjustable clip

Code: AT11-CLIP-A  
 (optional)

#### Suspension kits

Code: Sus.KitsA  
 (optional)

#### Joiner 90°A

Code: J-90A  
 (optional)

#### Joiner 90°B

Code: J-90B  
 (optional)

#### Joiner 120°A

Code: J-120A  
 (optional)

#### Joiner 120°B

Code: J-120B  
 (optional)

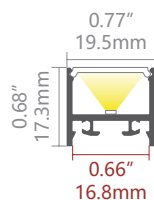
#### Joiner 180°A

Code: J-180A  
 (optional)

## LW-AT16-11



80°



### PMMA Diffuser

Code: AT15-O (Opal, light trans. > 65%)



(can be 25m/roll)

### Accessories

#### Aluminium endcap

Code: AT16-11-CAP  
 Code: AT16-11-CAP-H

#### Metal clip

Code: US20-CLIP-M

#### Suspension kits

Code: Sus.KitsA  
 (optional)

#### Joiner 60°B

Code: J-60B  
 (optional)

#### Joiner 90°A

Code: J-90A  
 (optional)

#### Joiner 90°B

Code: J-90B  
 (optional)

#### Joiner 120°A

Code: J-120A  
 (optional)

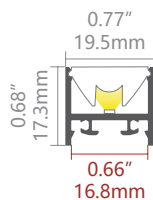
#### Joiner 120°B

Code: J-120B  
 (optional)

#### Joiner 180°A

Code: J-180A  
 (optional)

## LW-AT16-30



## PMMA Diffuser

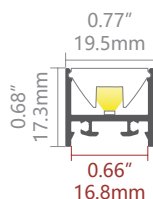
Code: AT12N-C (Clear, light trans. > 133%)



## Accessories

<b>Aluminium endcap</b> Code: AT16-11-CAP Code: AT16-11-CAP-H	<b>Metal clip</b> Code: US20-CLIP-M	<b>Suspension kits</b> Code: Sus.KitsA (optional)
<b>Joiner 60°B</b> Code: J-60B (optional)	<b>Joiner 90°A</b> Code: J-90A (optional)	<b>Joiner 90°B</b> Code: J-90B (optional)
<b>Joiner 120°A</b> Code: J-120A (optional)	<b>Joiner 120°B</b> Code: J-120B (optional)	<b>Joiner 180°A</b> Code: J-180A (optional)

## LW-AT16-60



## PMMA Diffuser

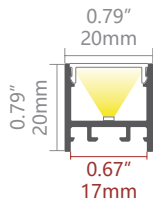
Code: AT12N-C (Clear, light trans. > 133%)



## Accessories

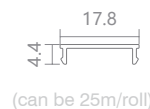
<b>Aluminium endcap</b> Code: AT16-11-CAP Code: AT16-11-CAP-H	<b>Metal clip</b> Code: US20-CLIP-M	<b>Suspension kits</b> Code: Sus.KitsA (optional)
<b>Joiner 60°B</b> Code: J-60B (optional)	<b>Joiner 90°A</b> Code: J-90A (optional)	<b>Joiner 90°B</b> Code: J-90B (optional)
<b>Joiner 120°A</b> Code: J-120A (optional)	<b>Joiner 120°B</b> Code: J-120B (optional)	<b>Joiner 180°A</b> Code: J-180A (optional)

## LW-US20



## PMMA Diffuser

Code: U20-O (Opal, light trans. > 64%)  
Code: U20-B (Black, light trans. > 23%)



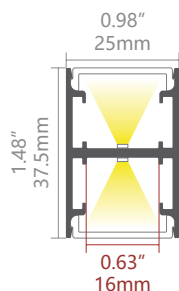
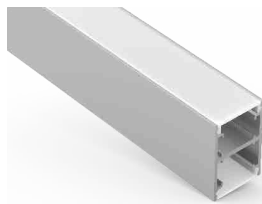
## Accessories

<b>Plastic endcap</b> Code: US20-CAP Code: US20-CAP-H	<b>Metal clip</b> Code: US20-CLIP-M	<b>Aluminum diffuser</b> Code: U20-AD (optional)	<b>Suspension kits</b> Code: Sus.KitsA (optional)
<b>CNC Aluminum endcap</b> Code: US20-CAP-N (optional)	<b>Joiner 60°B</b> Code: J-60B (optional)	<b>Joiner 90°A</b> Code: J-90A (optional)	<b>Joiner 90°B</b> Code: J-90B (optional)
<b>Joiner 120°A</b> Code: J-120A (optional)	<b>Joiner 120°B</b> Code: J-120B (optional)	<b>Joiner 180°A</b> Code: J-180A (optional)	

## LW-C25H

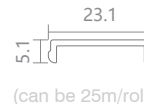


70°



## PMMA Diffuser

Code: P24-N (New opal, light trans. > 65%)



(can be 25m/roll)

## Accessories



**CNC Aluminum endcap**  
Code: C25H-CAP-N



**Suspension kits**  
Code: Sus.KitsA (optional)



**Joiner 90°B**  
Code: J-90B (optional)

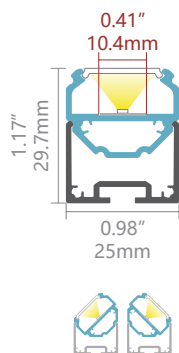
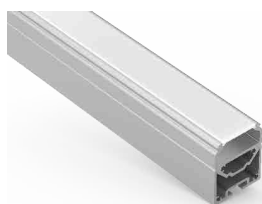


**Joiner 180°B**  
Code: J-180B (optional)

## LW-AT15



90°



## PMMA Diffuser

Code: AT15-O (Opal, light trans. > 65%)



(can be 25m/roll)

## Accessories



**Aluminium endcap**  
Code: AT15-CAP  
Code: AT15-CAP-H



**Suspension kits**  
Code: Sus.KitsA (optional)



**Joiner 90°A**  
Code: J-90A (optional)



**Joiner 90°B**  
Code: J-90B (optional)



**Joiner 120°A**  
Code: J-120A (optional)



**Joiner 120°B**  
Code: J-120B (optional)

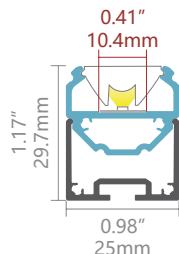


**Joiner 180°A**  
Code: J-180A (optional)

## LW-AT15-30



30°



## PMMA Diffuser

Code: AT12N-C (Clear, light trans. > 133%)



## Accessories



**Aluminium endcap**  
Code: AT15-CAP  
Code: AT15-CAP-H



**Suspension kits**  
Code: Sus.KitsA (optional)



**Joiner 90°A**  
Code: J-90A (optional)



**Joiner 90°B**  
Code: J-90B (optional)



**Joiner 120°A**  
Code: J-120A (optional)



**Joiner 120°B**  
Code: J-120B (optional)

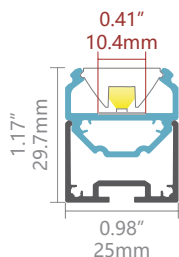


**Joiner 180°A**  
Code: J-180A (optional)

## LW-AT15-60



60°



## PMMA Diffuser

Code: AT12N-C (Clear, light trans. > 133%)



## Accessories



**Aluminium endcap**  
Code: AT15-CAP  
Code: AT15-CAP-H



**Suspension kits**  
Code: Sus.KitsA (optional)



**Joiner 90°A**  
Code: J-90A (optional)



**Joiner 90°B**  
Code: J-90B (optional)



**Joiner 120°A**  
Code: J-120A (optional)

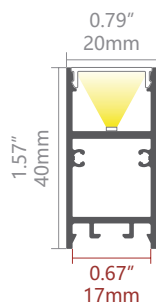
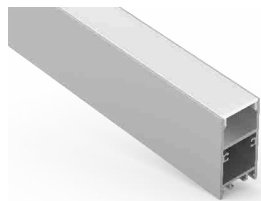


**Joiner 120°B**  
Code: J-120B (optional)



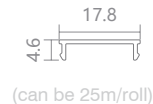
**Joiner 180°A**  
Code: J-180A (optional)

## LW-U20



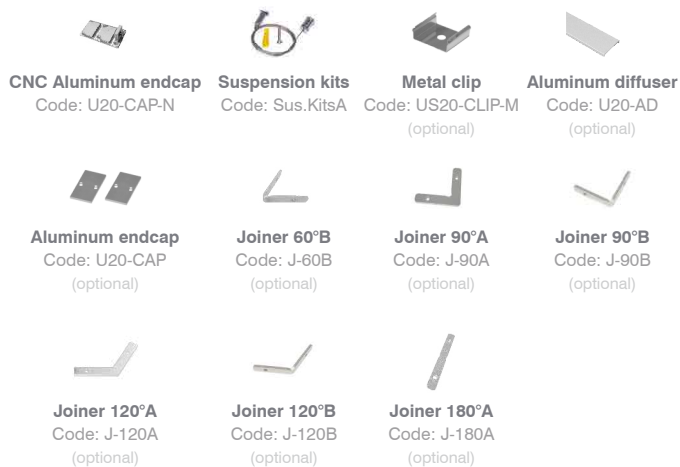
## PMMA Diffuser

Code: U20-O (Opal, light trans. > 64%)  
Code: U20-B (Black, light trans. > 23%)



(can be 25m/roll)

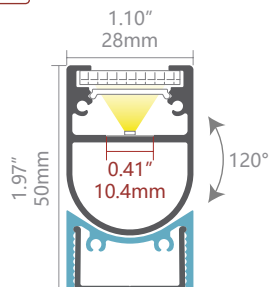
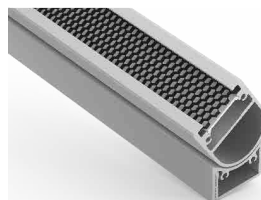
## Accessories



## LW-AT28

EXCLUSIVE IN NZ

NEW



## Honeycomb Diffuser

Code: WP3-T3-H (Black, light trans. > 43%)



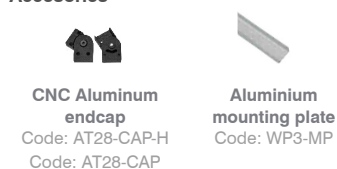
## PMMA Diffuser

Code: AT15-O (Opal, light trans. > 65%)



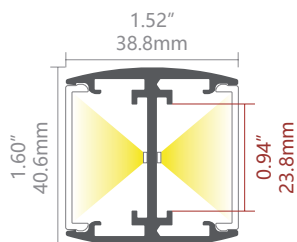
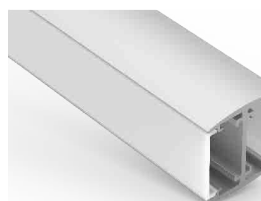
(can be 25m/roll)

## Accessories



## LW-CS35D

NEW



## PMMA Diffuser

Code: D005-O (Opal, light trans. > 63%)  
Code: D005-N (New opal, light trans. > 74%)  
Code: D005-F (Frost, light trans. > 89%)  
Code: D005-C (Clear, light trans. > 95%)  
Code: D005-B (Black, light trans. > 20%)



(can be 25m/roll)

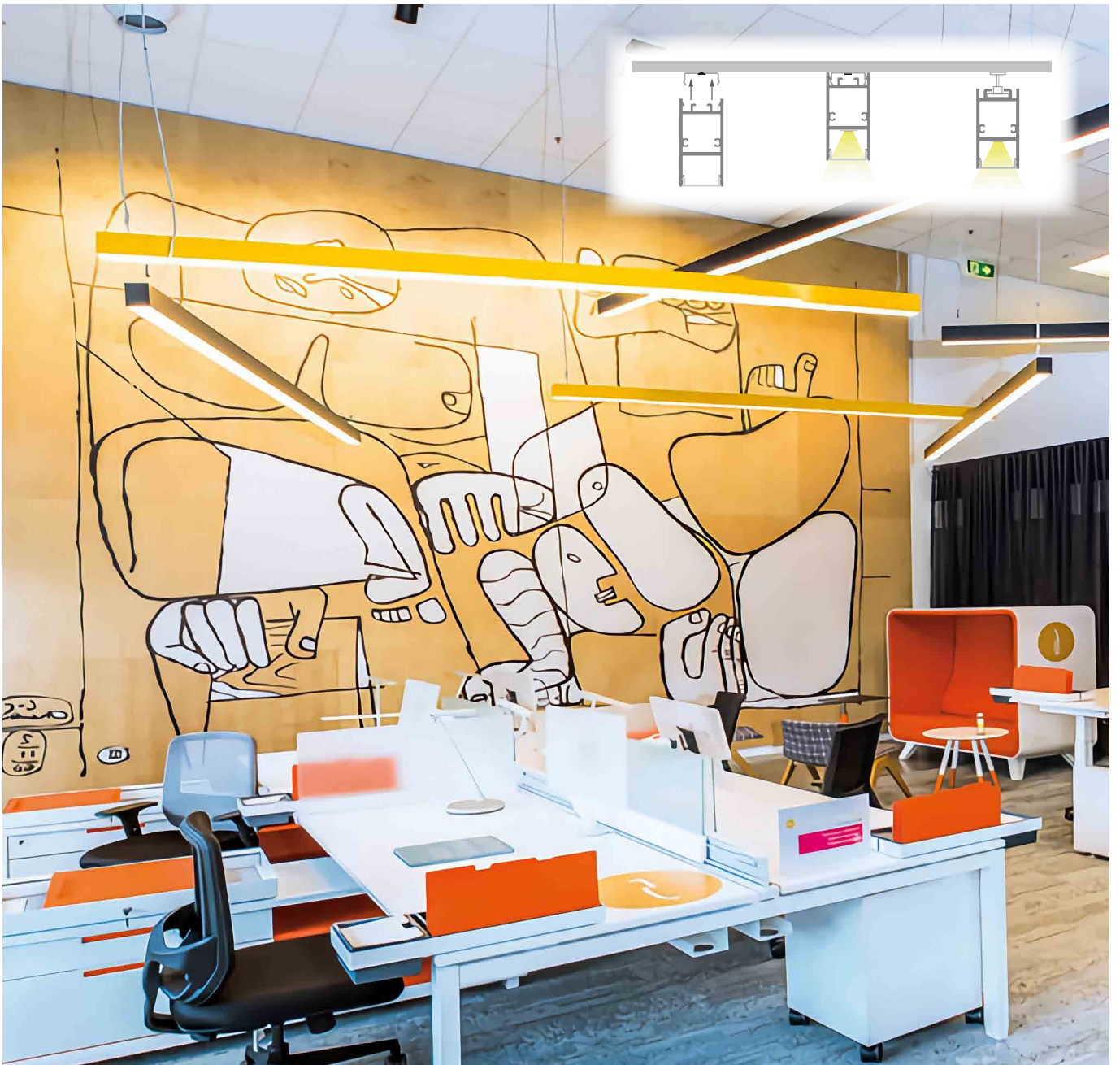
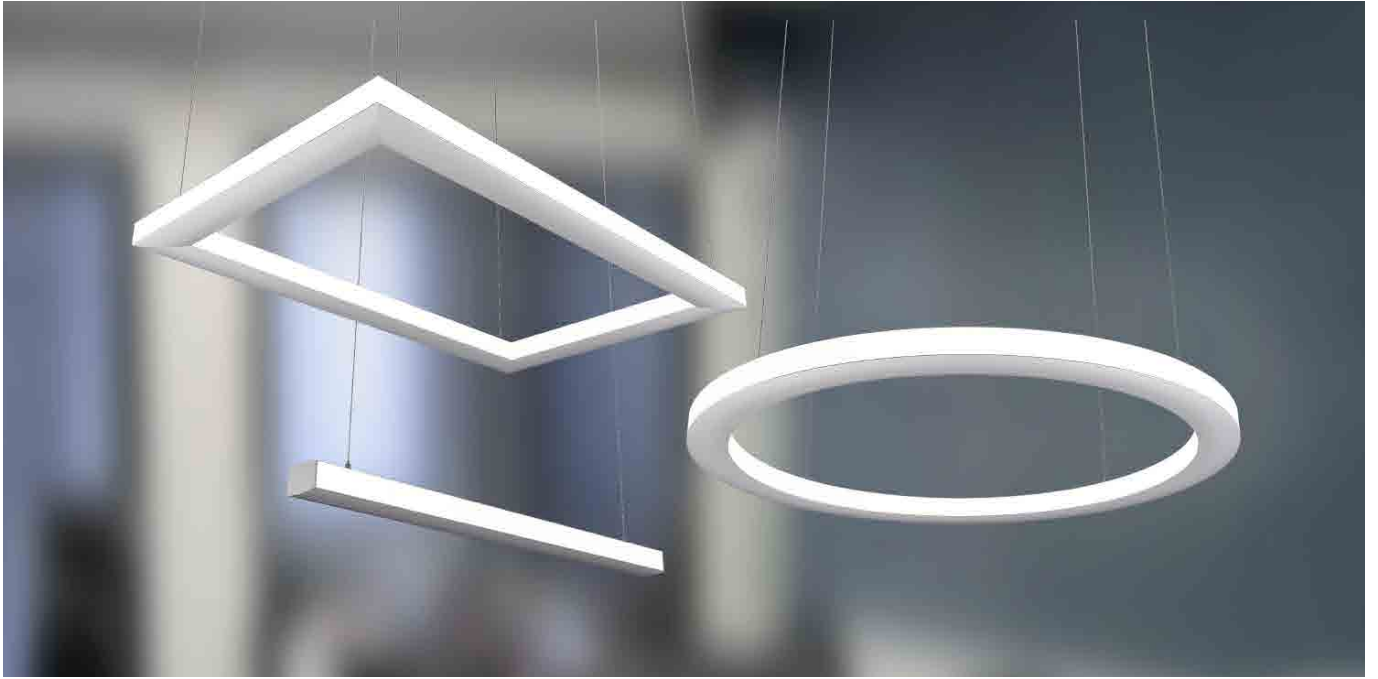
## PC MICRO PRISM Diffuser

Code: D005-MP (Micro prism, trans. > 66%)

## Accessories

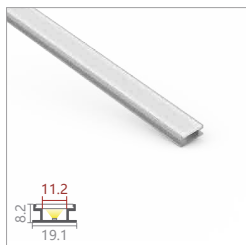
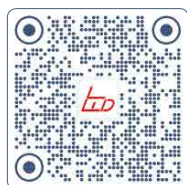




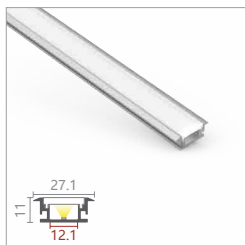


# FLOOR & WATERPROOF

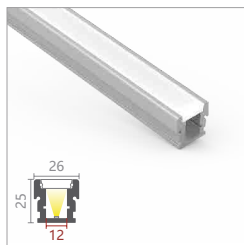
Page 29 - 33



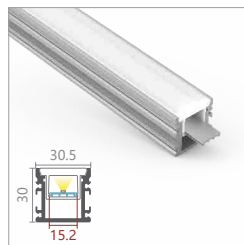
LW-AA



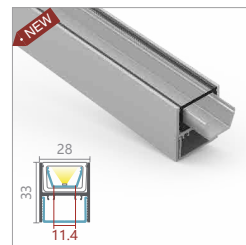
LW-AB



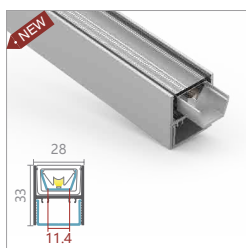
LW-AF1



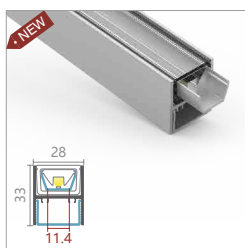
LW-AF2



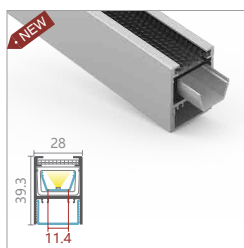
LW-WP3N



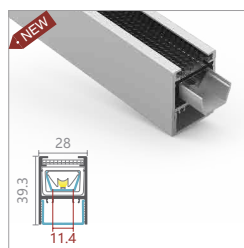
LW-WP3N-30



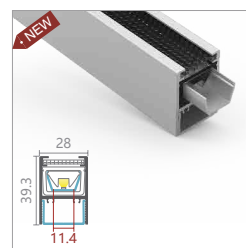
LW-WP3N-60



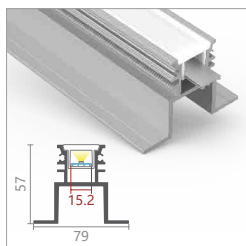
LW-WP3-T3



LW-WP3-T3-30



LW-WP3-T3-60

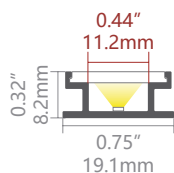


LW-AF3

## LW-AA IP65



120°



## PC Diffuser

Code: AA-O

(Opal, light trans. > 39%)



## Accessories



### Plastic endcap

Code: AA-CAP  
Code: AA-CAP-H



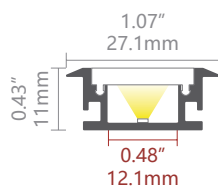
### Metal clip

Code: AA-CLIP-M  
(optional)

## LW-AB IP65



90°



## PC Diffuser

Code: AB-O

(Opal, light trans. > 54%)



## Accessories



### Plastic endcap

Code: AB-CAP  
Code: AB-CAP-H



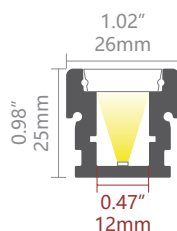
### Metal clip

Code: AA-CLIP-M  
(optional)

## LW-AF1 IP67 WALK OVER



40°



## PC Diffuser

Code: AA-F

(Frost, light trans. > 49%)



## Accessories



### Plastic endcap

Code: AF1-CAP  
Code: AF1-CAP-H



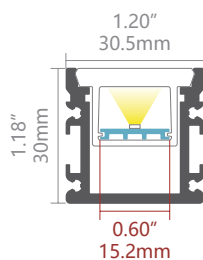
### Metal clip

Code: AF1-CLIP-M  
(optional)

## LW-AF2 IP67 DRIVE OVER



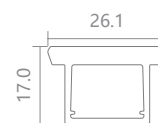
80°



## PC Diffuser

Code: AF2-O

(Opal, light trans. > 45%)



## Accessories



### Aluminium endcap

Code: AF2-CAP  
Code: AF2-CAP-H



### Soft endcap

Code: AF2-SCAP  
Code: AF2-SCAP-H



### Waterproof cable gland

Code: AF3-WP



### IP68 Waterproof connector

Code: AF3-WC  
(optional)



### IP68 Waterproof box

Code: AF3-WB  
(optional)



### Metal clip

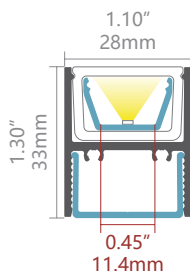
Code: AF2-CLIP  
(optional)



### Joiner 180°A

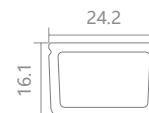
Code: J-180A  
(optional)

## LW-WP3N IP67 EXCLUSIVE IN NZ NEW



## PMMA Diffuser

Code: WP3-C (Clear, light trans. > 94%)



## Accessories



Aluminium endcap  
Code: WP3-D-CAP  
Code: WP3-D-CAP-H



CNC Aluminium endcap  
Code: WP3-CAP

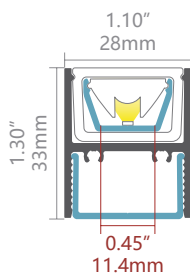


Aluminium mounting plate  
Code: WP3-MP



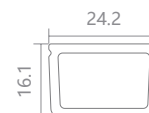
Suspension kits  
Code: Sus.KitsA  
(optional)

## LW-WP3N-30 IP67 EXCLUSIVE IN NZ NEW



## PMMA Diffuser

Code: WP3-C (Clear, light trans. > 94%)



## PMMA Diffuser

Code: AT12N-C (Clear, light trans. > 133%)



## Accessories



Aluminium endcap  
Code: WP3-D-CAP  
Code: WP3-D-CAP-H



CNC Aluminium endcap  
Code: WP3-CAP

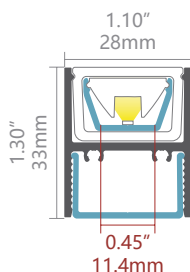


Aluminium mounting plate  
Code: WP3-MP



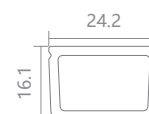
Suspension kits  
Code: Sus.KitsA  
(optional)

## LW-WP3N-60 IP67 EXCLUSIVE IN NZ NEW



## PMMA Diffuser

Code: WP3-C (Clear, light trans. > 94%)



## PMMA Diffuser

Code: AT12N-C (Clear, light trans. > 133%)



## Accessories



Aluminium endcap  
Code: WP3-D-CAP  
Code: WP3-D-CAP-H



CNC Aluminium endcap  
Code: WP3-CAP

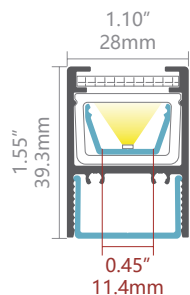
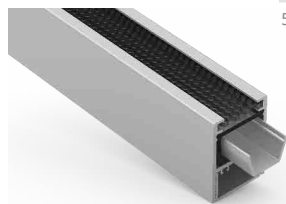


Aluminium mounting plate  
Code: WP3-MP



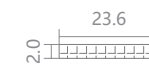
Suspension kits  
Code: Sus.KitsA  
(optional)

## LW-WP3-T3 IP67 EXCLUSIVE IN NZ NEW



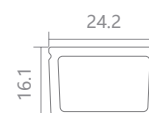
## Honeycomb Diffuser

Code: WP3-T3-H (Black, light trans. > 43%)



## PMMA Diffuser

Code: WP3-C (Clear, light trans. > 94%)



## Accessories



Aluminium endcap  
Code: WP3-D-CAP  
Code: WP3-D-CAP-H



Aluminium mounting plate  
Code: WP3-MP

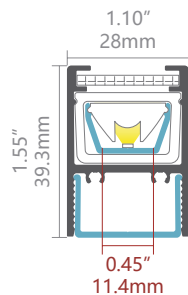
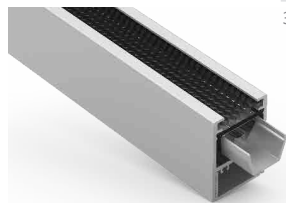


Aluminium endcap  
Code: WP3-T3-CAP



Suspension kits  
Code: Sus.KitsA  
(optional)

## LW-WP3-T3-30 IP67 EXCLUSIVE IN NZ NEW



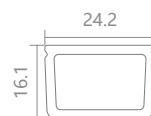
## Honeycomb Diffuser

Code: WP3-T3-H (Black, light trans. > 43%)



## PMMA Diffuser

Code: WP3-C (Clear, light trans. > 94%)



## PMMA Diffuser

Code: AT12N-C (Clear, light trans. > 133%)



## Accessories



**Aluminium endcap**  
Code: WP3-D-CAP  
Code: WP3-D-CAP-H



**Aluminium mounting plate**  
Code: WP3-MP

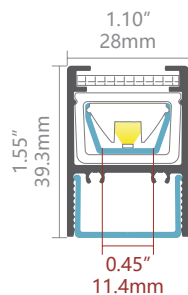


**Aluminium endcap**  
Code: WP3-T3-CAP



**Suspension kits**  
Code: Sus.KitsA (optional)

## LW-WP3-T3-60 IP67 EXCLUSIVE IN NZ NEW



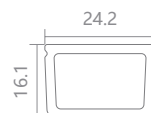
## Honeycomb Diffuser

Code: WP3-T3-H (Black, light trans. > 43%)



## PMMA Diffuser

Code: WP3-C (Clear, light trans. > 94%)



## PMMA Diffuser

Code: AT12N-C (Clear, light trans. > 133%)



## Accessories



**Aluminium endcap**  
Code: WP3-D-CAP  
Code: WP3-D-CAP-H



**Aluminium mounting plate**  
Code: WP3-MP

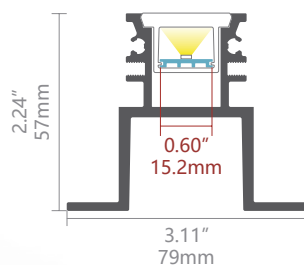
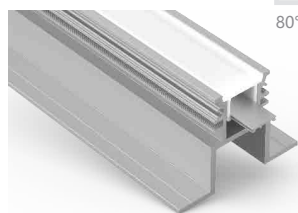


**Aluminium endcap**  
Code: WP3-T3-CAP



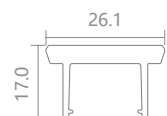
**Suspension kits**  
Code: Sus.KitsA (optional)

## LW-AF3 IP67 DRIVE OVER



## PC Diffuser

Code: AF2-O (Opal, light trans. > 45%)



## Accessories



**Stainless steel endcap**  
Code: AF3-CAP



**Soft endcap**  
Code: AF2-SCAP  
Code: AF2-SCAP-H



**Glass diffuser, max 1.25M**  
Code: AF3-GLASS



**Stainless steel side bar, max 1.25M**  
Code: AF3-SB



**Waterproof cable gland**  
Code: AF3-WP



**IP68 Waterproof connector**  
Code: AF3-WC (optional)



**IP68 Waterproof box**  
Code: AF3-WB (optional)

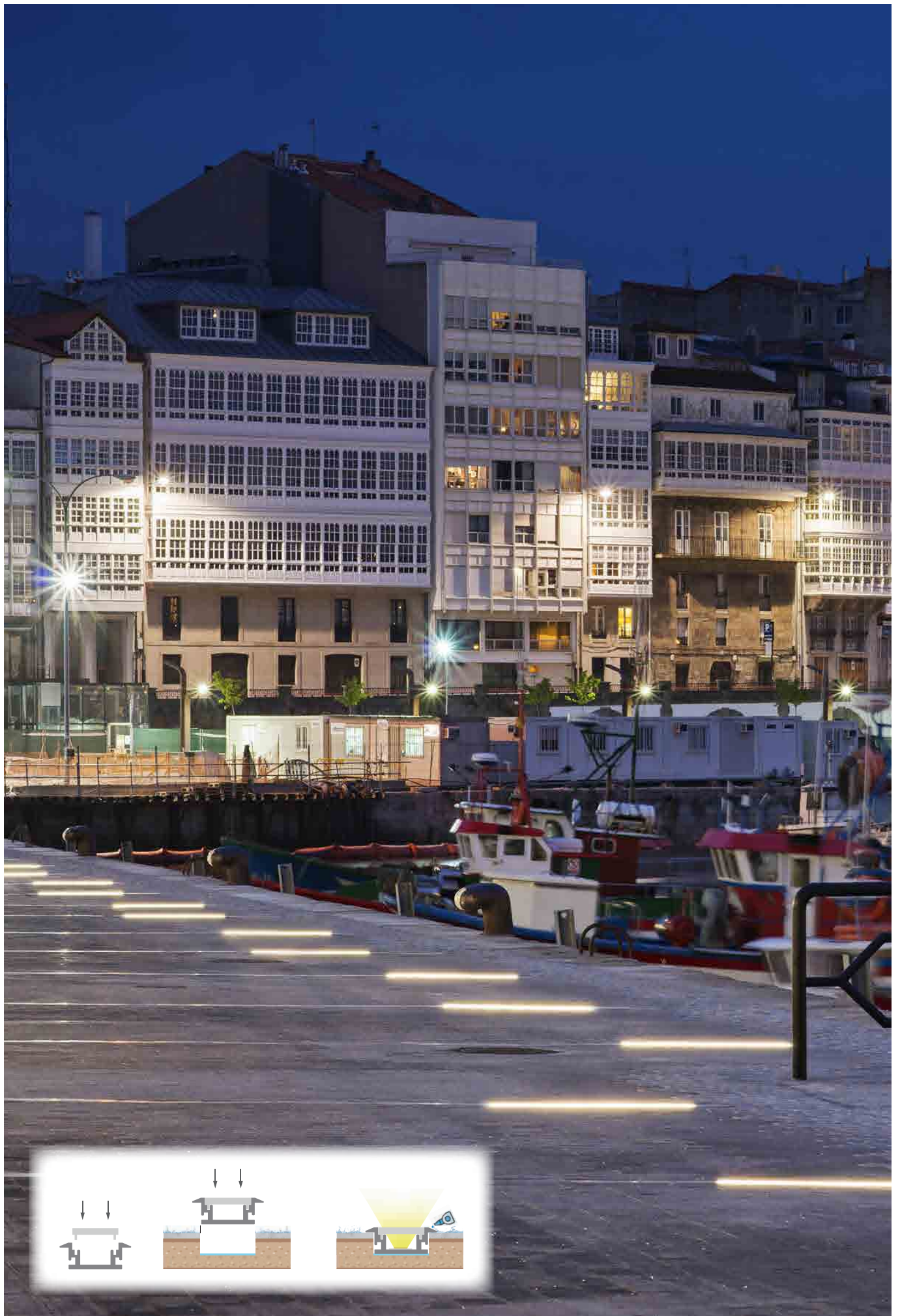


**Joiner 180°**  
Code: J-180 (optional)



**Joiner 90°**  
Code: J-90 (optional)

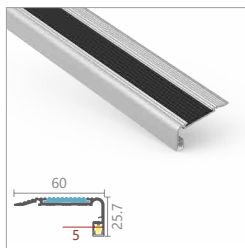
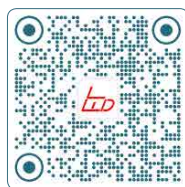




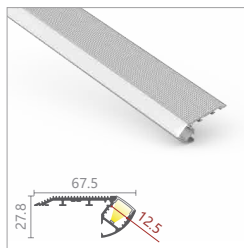


# STAIR & STEP

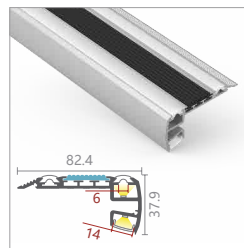
Page 34 - 36



LW-ST2

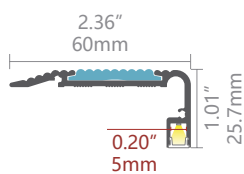


LW-ST1



LW-STR3

## LW-ST2



### PC Diffuser

Code: AS9-O (Opal, light trans. > 45%)



### PMMA Diffuser

Code: AS9-B (Black, light trans. > 24%)

(can be 25m/roll)

### Accessories



#### Plastic endcap

Code: ST2-CAP-R

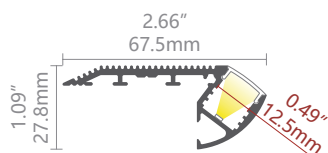
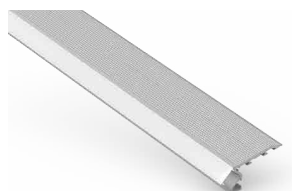
Code: ST2-CAP-L



#### 25mm Anti-slip rubber

Code: ST2-ASRUB  
25mm

## LW-ST1



### PC Diffuser

Code: D001-O (Opal, light trans. > 60%)



(can be 25m/roll)

### PMMA Diffuser

Code: D001-B (Black, light trans. > 21%)

### Accessories

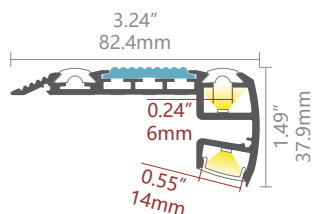


#### Plastic endcap

Code: ST1-CAP-R

Code: ST1-CAP-L

## LW-STR3



### PC Diffuser

Code: D001-O (Opal, light trans. > 60%)



(can be 25m/roll)

### PMMA Diffuser

Code: D001-B (Black, light trans. > 21%)

### Accessories



#### Plastic endcap

Code: STR3-CAP-R

Code: STR3-CAP-L



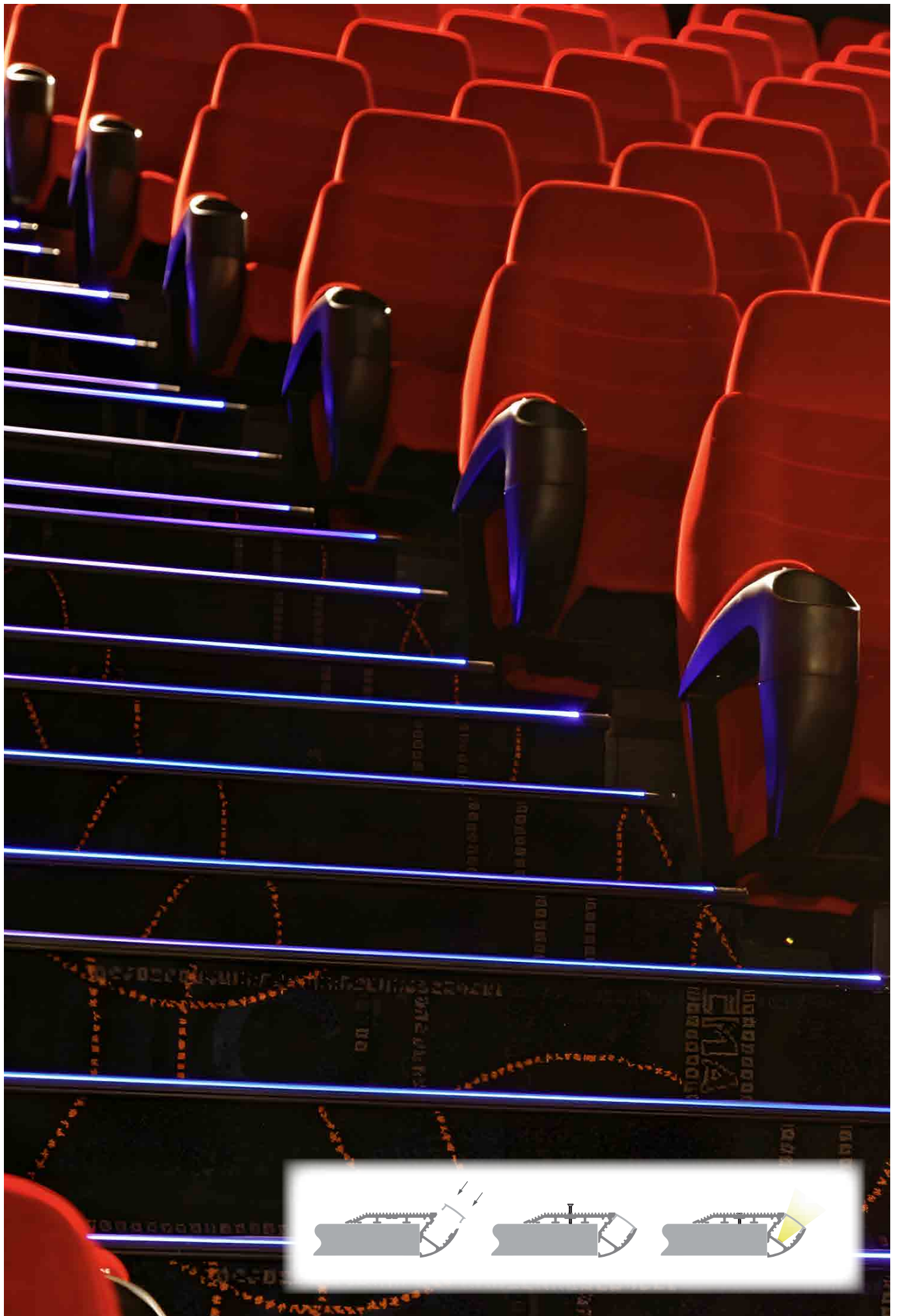
#### 25mm Anti-slip rubber

Code: ST2-ASRUB  
25mm



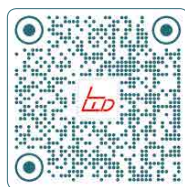
#### Anti-slip rubber

Code: STR3-ASRUB



# TUBE & WARDROBE

Page 37 - 39



LW-R24



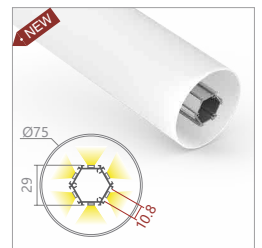
LW-R30



LW-R34

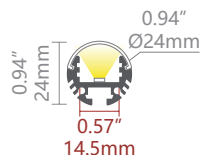


LW-R60



LW-R75

## LW-R24



### PC Diffuser

Code: R24-O (Opal, light trans. > 47%)  
Code: R24-F (Frost, light trans. > 56%)



### Accessories



**Aluminium endcap**  
Code: R24-CAP  
Code: R24-CAP-H

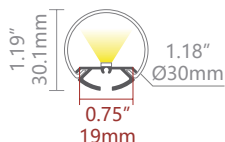


**Adjustable clip**  
Code: AP1-CLIP-A



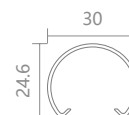
**Suspension kits**  
Code: Sus.KitsA  
(optional)

## LW-R30



### PC Diffuser

Code: R30-O (Opal, light trans. > 79%)



### Accessories



**Plastic endcap**  
Code: R30-CAP  
Code: R30-CAP-H

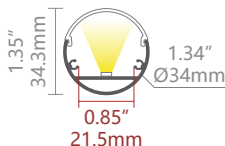


**Suspension kits**  
Code: Sus.KitsA



**CNC Aluminium endcap**  
Code: R30-CAP-N  
(optional)

## LW-R34



### PC Diffuser

Code: R34-O (Opal, light trans. > 40%)  
Code: R34-F (Frost, light trans. > 45%)



### PMMA Diffuser

Code: R34-B (Black, light trans. > 25%)

### Accessories



**Aluminium endcap**  
Code: R34-CAP  
Code: R34-CAP-H



**Wall bracket**  
Code: R34-WB

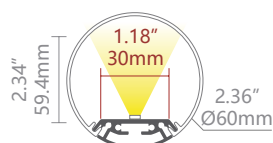


**CNC Aluminium endcap**  
Code: R34-CAP-N  
(optional)



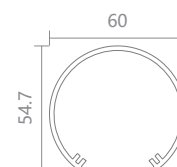
**Supporter**  
Code: R34-SP  
(optional)

## LW-R60



### PC Diffuser

Code: R60-O (Opal, light trans. > 74%)



### Accessories



**Plastic endcap**  
Code: R60-CAP



**Suspension kits**  
Code: Sus.KitsA



**Surface mounting kits**  
Code: R60-MOUNTING KITS



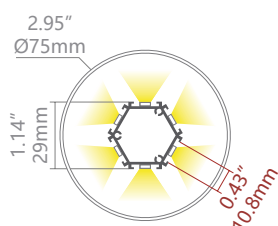
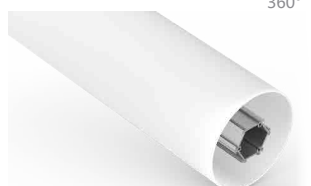
**CNC Aluminium endcap**  
Code: R60-CAP-N  
(optional)



**Joiner 180°A**  
Code: J-180A  
(optional)

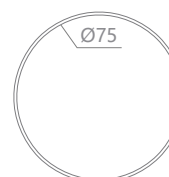
## LW-R75

NEW



### PC Diffuser

Code: R75-O (Opal, light trans. > 70%)



### Accessories



**Plastic endcap**  
Code: R75-CAP  
Code: R75-CAP-H



**Suspension kits**  
Code: Sus.KitsA

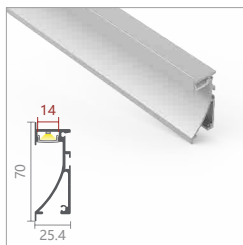
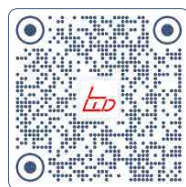




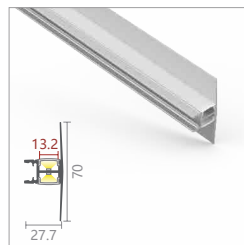


# WALL

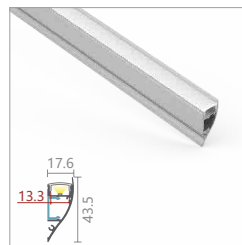
Page 40 - 43



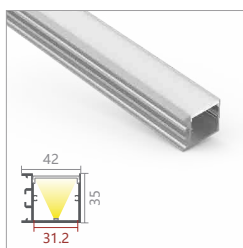
LW-AW1



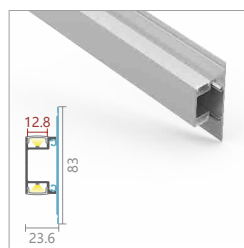
LW-AW2



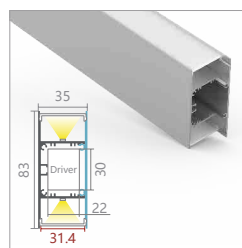
LW-AW8



LW-AW35

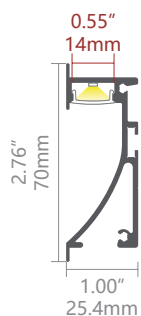


LW-AW4-1



LW-AW5-1

## LW-AW1



### PMMA Diffuser

Code: D001-O	(Opal, light trans. > 58%)
Code: D001-M	(Milky, light trans. > 75%)
Code: D001-F	(Frost, light trans. > 88%)
Code: D001-C	(Clear, light trans. > 97%)
Code: D001-B	(Black, light trans. > 21%)



(can be 25m/roll)

### Accessories



#### Aluminium endcap

Code: AW1-CAP-L  
Code: AW1-CAP-R

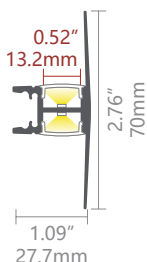


**Spring clip**  
Code: SC-AW1



**Metal clip**  
Code: AW1-CLIP-M  
(optional)

## LW-AW2



### PMMA Diffuser

Code: D001-O	(Opal, light trans. > 58%)
Code: D001-M	(Milky, light trans. > 75%)
Code: D001-F	(Frost, light trans. > 88%)
Code: D001-C	(Clear, light trans. > 97%)
Code: D001-B	(Black, light trans. > 21%)



(can be 25m/roll)

### Accessories



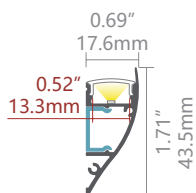
#### Aluminium endcap

Code: AW2-CAP  
Code: AW2-CAP-H



**Metal clip**  
Code: AS1-CLIP-M

## LW-AW8



### PC Diffuser

Code: AW8-O	(Opal, light trans. > 71%)
-------------	----------------------------



### Accessories



#### Aluminium endcap

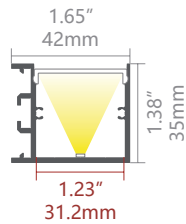
Code: AW8-CAP-L  
Code: AW8-CAP-R



#### Mounting plate

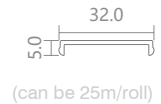
Code: AW8-  
ALU-PLATE

## LW-AW35



## PMMA Diffuser

Code: D005-O	(Opal, light trans. > 63%)
Code: D005-N	(New opal, light trans. > 74%)
Code: D005-F	(Frost, light trans. > 89%)
Code: D005-C	(Clear, light trans. > 95%)
Code: D005-B	(Black, light trans. > 20%)



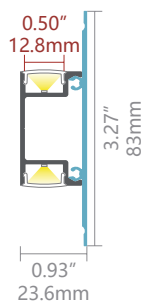
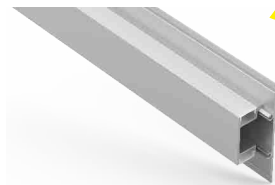
## PC MICRO PRISM Diffuser

Code: D005-MP	(Micro prism, trans. > 66%)
---------------	-----------------------------

## Accessories

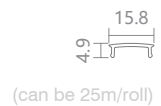


## LW-AW4-1

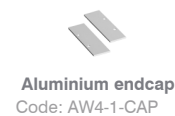


## PMMA Diffuser

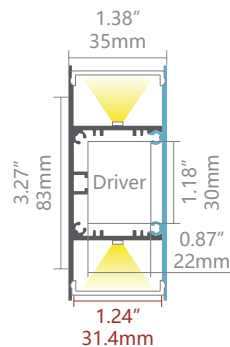
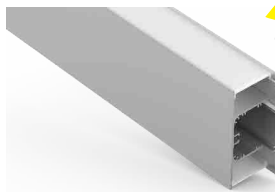
Code: D001-O	(Opal, light trans. > 58%)
Code: D001-M	(Milky, light trans. > 75%)
Code: D001-F	(Frost, light trans. > 88%)
Code: D001-C	(Clear, light trans. > 97%)
Code: D001-B	(Black, light trans. > 21%)



## Accessories

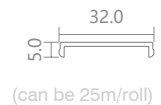


## LW-AW5-1



## PMMA Diffuser

Code: D005-O	(Opal, light trans. > 63%)
Code: D005-N	(New opal, light trans. > 74%)
Code: D005-F	(Frost, light trans. > 89%)
Code: D005-C	(Clear, light trans. > 95%)
Code: D005-B	(Black, light trans. > 20%)



## PC MICRO PRISM Diffuser

Code: D005-MP	(Micro prism, trans. > 66%)
---------------	-----------------------------

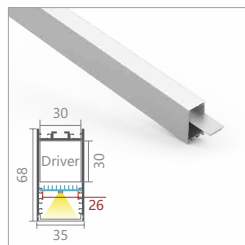
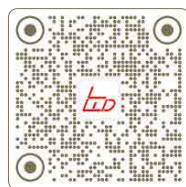
## Accessories



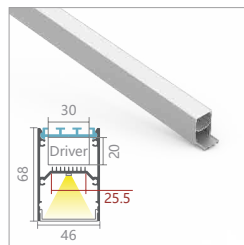


# DRIVER BUILT-IN

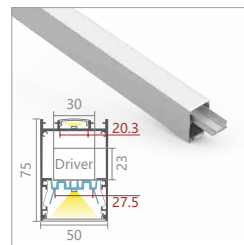
Page 44 - 48



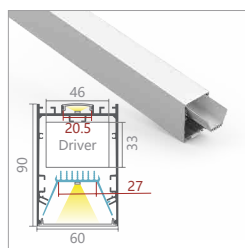
LW-P35



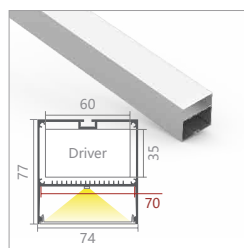
LW-P46



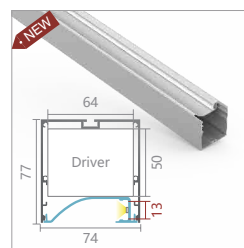
LW-P50N



LW-P60

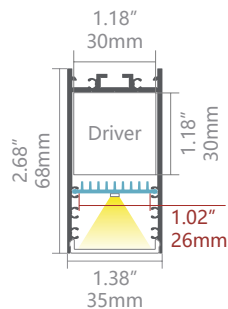


LW-P74



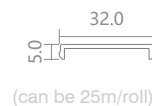
LW-P74N

## LW-P35



### PMMA Diffuser

Code: D005-O	(Opal, light trans.	> 63%)
Code: D005-N	(New opal, light trans.	> 74%)
Code: D005-F	(Frost, light trans.	> 89%)
Code: D005-C	(Clear, light trans.	> 95%)
Code: D005-B	(Black, light trans.	> 20%)



(can be 25m/roll)

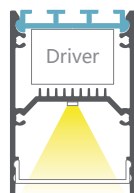
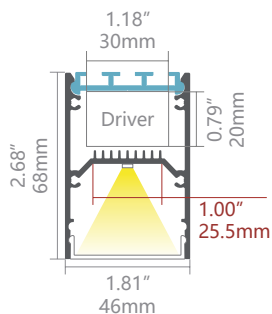
### PC MICRO PRISM Diffuser

Code: D005-MP	(Micro prism, trans.	> 66%)
---------------	----------------------	--------

### Accessories

<b>Aluminium endcap</b> Code: P35-CAP	<b>Suspension kits</b> Code: Sus.KitsA	<b>Aluminum diffuser</b> Code: D005-AD (optional)
<b>CNC Aluminium endcap</b> Code: P35-CAP-N (optional)	<b>Metal clip</b> Code: WN35-CLIP-M (optional)	<b>Wall clip</b> Code: WCLIP (optional)
<b>Joiner 90°A</b> Code: J-90A (optional)	<b>Joiner 120°A</b> Code: J-120A (optional)	<b>Joiner 180°A</b> Code: J-180A (optional)

## LW-P46



### PMMA Diffuser

Code: P46-N	(New opal, light trans. > 74%)
-------------	--------------------------------



### Accessories

<b>Aluminium endcap</b> Code: P46-CAP	<b>Suspension kits</b> Code: Sus.KitsA	<b>CNC Aluminium endcap</b> Code: P46-CAP-N (optional)	<b>Wall clip</b> Code: WCLIP (optional)
<b>Joiner 90°A</b> Code: J-90A (optional)	<b>Joiner 120°A</b> Code: J-120A (optional)	<b>Joiner 180°A</b> Code: J-180A (optional)	



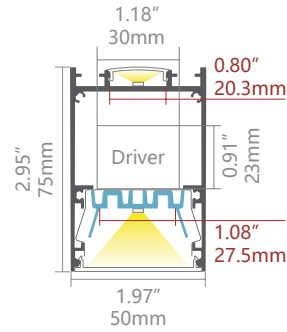
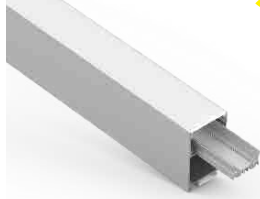
## LW-P50N



135°



90°



### PMMA Diffuser(Up)

Code: D003-O	(Opal, light trans.	> 70%)
Code: D003-M	(Milky, light trans.	> 78%)
Code: D003-F	(Frost, light trans.	> 91%)
Code: D003-C	(Clear, light trans.	> 94%)
Code: D003-B	(Black, light trans.	> 20%)



(can be 25m/roll)

### PMMA diffuser(Down)

Code: D050-O	(Opal, light trans.	> 68%)
Code: D050-N	(New opal, light trans.	> 74%)
Code: D050-B	(Black, light trans.	> 22%)

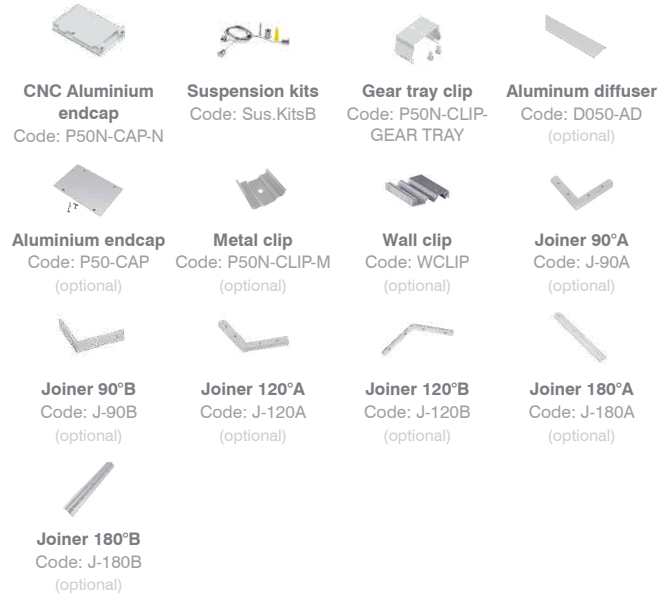


(can be 25m/roll)

### PC MICRO PRISM Diffuser(Down)

Code: D050-MP	(Micro prism, trans.	> 62%)
---------------	----------------------	--------

### Accessories



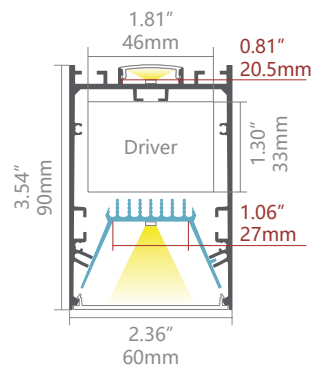
## LW-P60



125°



85°



### PMMA Diffuser(Up)

Code: D003-O	(Opal, light trans.	> 70%)
Code: D003-M	(Milky, light trans.	> 78%)
Code: D003-F	(Frost, light trans.	> 91%)
Code: D003-C	(Clear, light trans.	> 94%)
Code: D003-B	(Black, light trans.	> 20%)



(can be 25m/roll)

### PMMA diffuser(Down)

Code: D060-O	(Opal, light trans.	> 65%)
Code: D060-N	(New opal, light trans.	> 74%)



(can be 25m/roll)

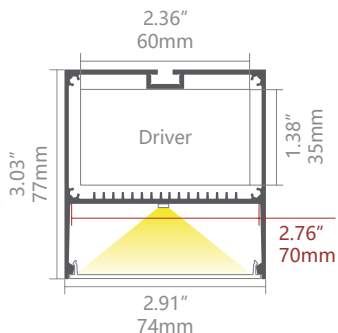
### PC MICRO PRISM Diffuser(Down)

Code: D060-MP	(Micro prism, trans.	> 65%)
---------------	----------------------	--------

### Accessories



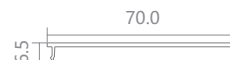
## LW-P74



## PMMA Diffuser

Code: P74-O

(Opal, light trans. > 65%)



### Accessories



**Aluminium endcap**  
Code: P74-CAP



**Suspension kits**  
Code: Sus.KitsA



**L type stainless steel bracket**  
Code: LW-LMB (optional)



**Wall clip**  
Code: WCLIP (optional)



**Joiner 90°A**  
Code: J-90A (optional)



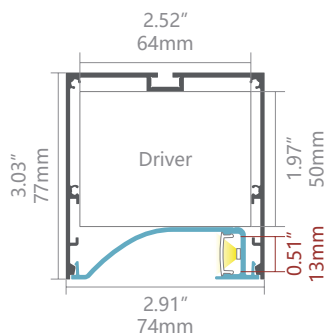
**Joiner 120°A**  
Code: J-120A (optional)



**Joiner 180°A**  
Code: J-180A (optional)

## LW-P74N

**NEW**



## PMMA Diffuser

Code: D001-O

(Opal, light trans. > 58%)

Code: D001-M

(Milky, light trans. > 75%)

Code: D001-F

(Frost, light trans. > 88%)

Code: D001-C

(Clear, light trans. > 97%)

Code: D001-B

(Black, light trans. > 21%)



(can be 25m/roll)

### Accessories



**Aluminium endcap**  
Code: P74N-CAP



**Suspension kits**  
Code: Sus.KitsA



**L type stainless steel bracket**  
Code: LW-LMB (optional)



**Wall clip**  
Code: WCLIP (optional)



**Joiner 90°A**  
Code: J-90A (optional)



**Joiner 90°B**  
Code: J-90B (optional)



**Joiner 180°A**  
Code: J-180A (optional)

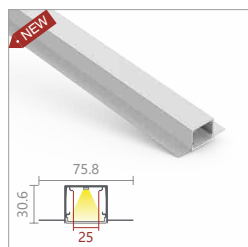
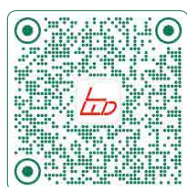


**Joiner 180°B**  
Code: J-180B (optional)

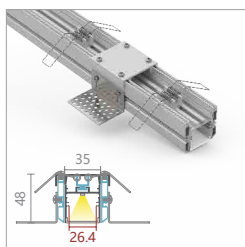


# TRIMLESS -ARCHITECTURAL

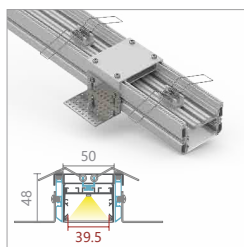
Page 49 - 52



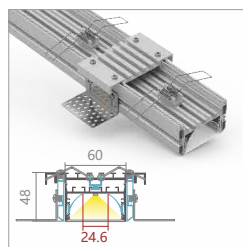
LW-TR35N



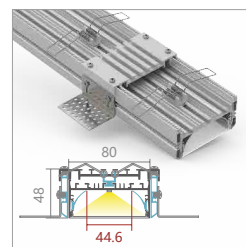
LW-TR35



LW-TR50

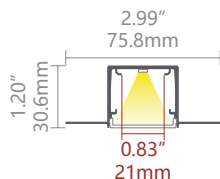


LW-TR60



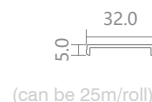
LW-TR80

## LW-TR35N NEW



### PMMA Diffuser

Code: D005-O	(Opal, light trans. > 63%)
Code: D005-N	(New opal, light trans. > 74%)
Code: D005-F	(Frost, light trans. > 89%)
Code: D005-C	(Clear, light trans. > 95%)
Code: D005-B	(Black, light trans. > 20%)



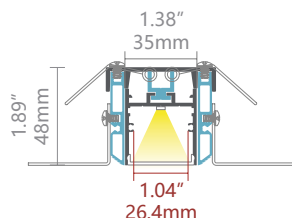
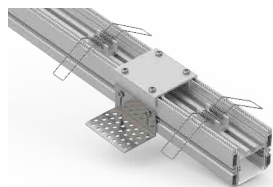
### PC MICRO PRISM Diffuser

Code: D005-MP	(Micro prism, trans. > 66%)
---------------	-----------------------------

### Accessories

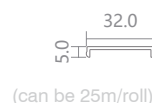
<b>Aluminium endcap</b> Code: TR35N-CAP	<b>Aluminum diffuser</b> Code: D005-AD (optional)	<b>Joiner 90°</b> Code: J-90 (optional)	<b>Joiner 120°</b> Code: J-120 (optional)
<b>Joiner 180°</b> Code: J-180 (optional)			

## LW-TR35



### PMMA Diffuser

Code: D005-O	(Opal, light trans. > 63%)
Code: D005-N	(New opal, light trans. > 74%)
Code: D005-F	(Frost, light trans. > 89%)
Code: D005-C	(Clear, light trans. > 95%)
Code: D005-B	(Black, light trans. > 20%)



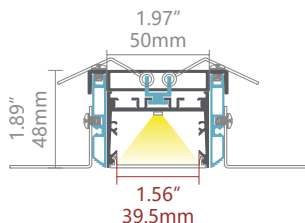
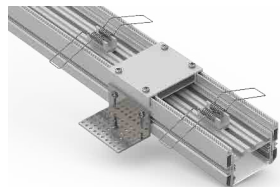
### PC MICRO PRISM Diffuser

Code: D005-MP	(Micro prism, trans. > 66%)
---------------	-----------------------------

### Accessories

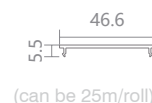
<b>CNC Aluminium endcap</b> Code: WN35-CAP-N	<b>Aluminium endcap</b> Code: TR35-CAP	<b>Spring clip</b> Code: SC-N31	<b>Trimless bar</b> Code: LW-TR1
<b>L type stainless steel bracket</b> Code: LW-LMB	<b>Bridge base</b> Code: LW-AB35	<b>Aluminum diffuser</b> Code: D005-AD (optional)	<b>Joiner 90°A</b> Code: J-90A (optional)
<b>Joiner 120°A</b> Code: J-120A (optional)	<b>Joiner 180°A</b> Code: J-180A (optional)		

## LW-TR50



### PMMA diffuser

Code: D050-O	(Opal, light trans. > 68%)
Code: D050-N	(New opal, light trans. > 74%)
Code: D050-B	(Black, light trans. > 22%)



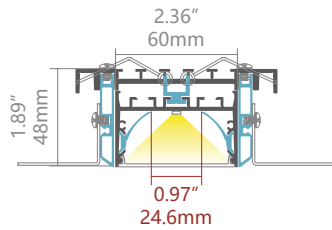
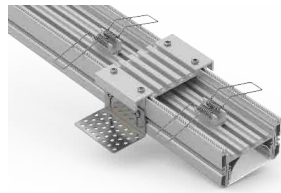
### PC MICRO PRISM Diffuser

Code: D050-MP	(Micro prism, trans. > 62%)
---------------	-----------------------------

### Accessories

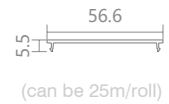
<b>Aluminium endcap</b> Code: E50-CAP	<b>Aluminium endcap</b> Code: TR50-CAP	<b>Spring clip</b> Code: SC-N31	<b>Trimless bar</b> Code: LW-TR1
<b>L type stainless steel bracket</b> Code: LW-LMB	<b>Bridge base</b> Code: LW-AB50	<b>ALU Reflector</b> Code: RF (optional)	<b>Aluminum diffuser</b> Code: D050-AD (optional)
<b>Joiner 90°A</b> Code: J-90A (optional)	<b>Joiner 120°A</b> Code: J-120A (optional)	<b>Joiner 180°A</b> Code: J-180A (optional)	

## LW-TR60



### PMMA diffuser

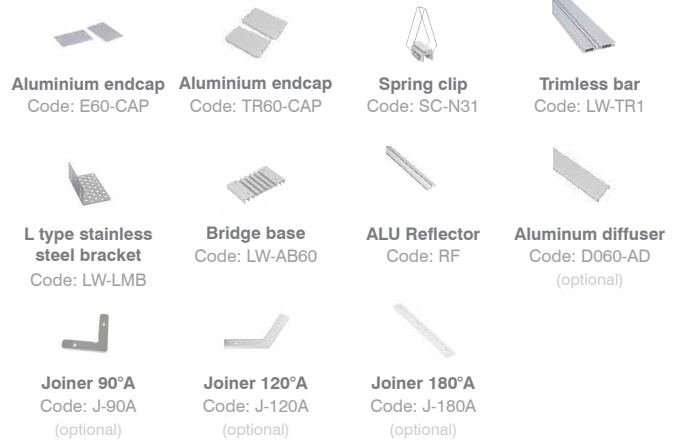
Code: D060-O (Opal, light trans. > 65%)  
Code: D060-N (New opal, light trans. > 74%)



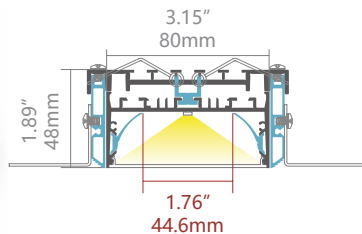
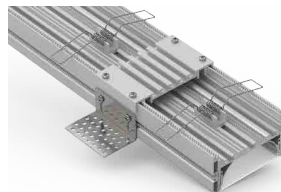
### PC MICRO PRISM Diffuser

Code: D060-MP (Micro prism, trans. > 65%)

### Accessories

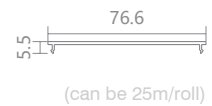


## LW-TR80

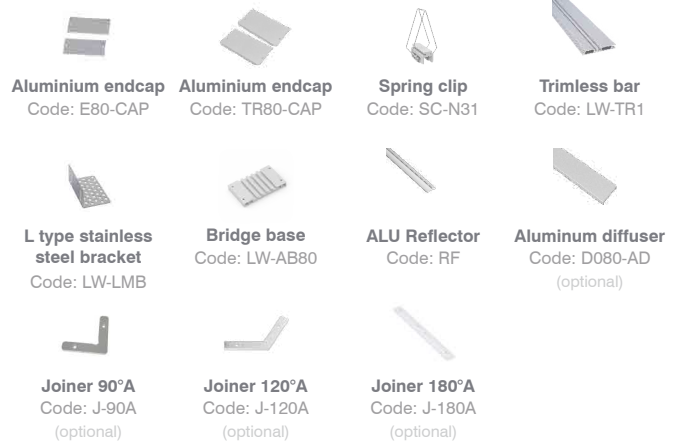


### PMMA diffuser

Code: D080-O (Opal, light trans. > 61%)  
Code: D080-N (New opal, light trans. > 74%)



### Accessories



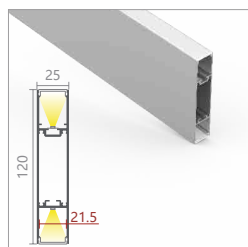
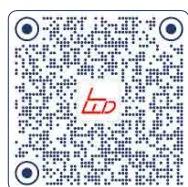




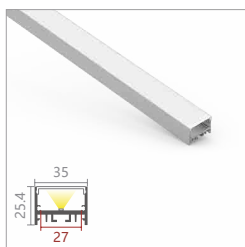


# SURFACE & SUSPENDED -ARCHITECTURAL

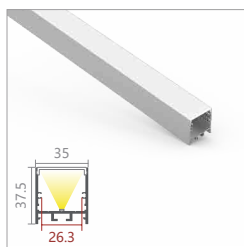
Page 53 - 47



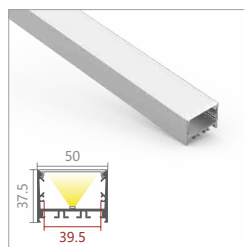
LW-P24



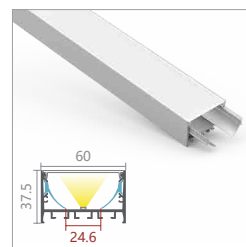
LW-WN35-25



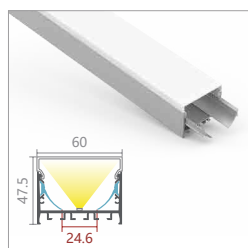
LW-WN35



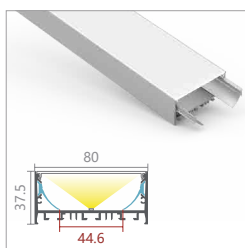
LW-E50



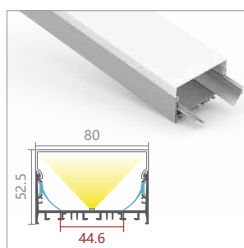
LW-E60



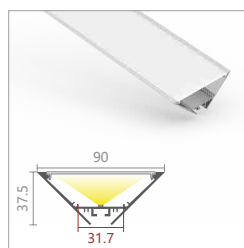
LW-EU60



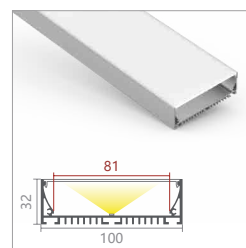
LW-E80



LW-EU80



LW-W91

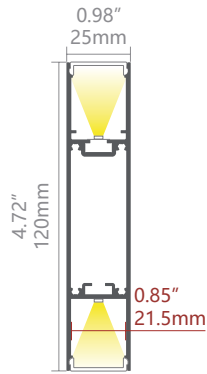


LW-E100

## LW-P24

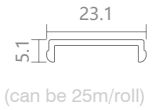


45°  
45°



## PMMA Diffuser

Code: P24-N (New opal, light trans. > 65%)



## Accessories

**CNC Aluminium endcap**  
Code: P24-CAP-N

**Suspension kits**  
Code: Sus.KitsA

**Wall clip**  
Code: WCLIP  
(optional)

**Joiner 90°A**  
Code: J-90A  
(optional)

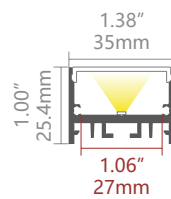
**Joiner 120°A**  
Code: J-120A  
(optional)

**Joiner 180°A**  
Code: J-180A  
(optional)

## LW-WN35-25

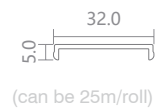


90°



## PMMA Diffuser

Code: D005-O (Opal, light trans. > 63%)  
Code: D005-N (New opal, light trans. > 74%)  
Code: D005-F (Frost, light trans. > 89%)  
Code: D005-C (Clear, light trans. > 95%)  
Code: D005-B (Black, light trans. > 20%)



## PC MICRO PRISM Diffuser

Code: D005-MP (Micro prism, trans. > 66%)

## Accessories

**Aluminium endcap**  
Code: WN35-25-CAP

**Suspension kits**  
Code: Sus.KitsA

**Aluminum diffuser**  
Code: D005-AD  
(optional)

**Metal clip**  
Code: WN35-CLIP-M  
(optional)

**Joiner 90°A**  
Code: J-90A  
(optional)

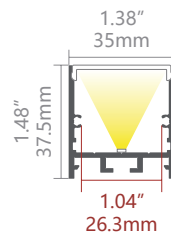
**Joiner 120°A**  
Code: J-120A  
(optional)

**Joiner 180°A**  
Code: J-180A  
(optional)

## LW-WN35

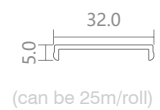


60°



## PMMA Diffuser

Code: D005-O (Opal, light trans. > 63%)  
Code: D005-N (New opal, light trans. > 74%)  
Code: D005-F (Frost, light trans. > 89%)  
Code: D005-C (Clear, light trans. > 95%)  
Code: D005-B (Black, light trans. > 20%)



## PC MICRO PRISM Diffuser

Code: D005-MP (Micro prism, trans. > 66%)

## Accessories

**CNC Aluminium endcap**  
Code: WN35-CAP-N

**Suspension kits**  
Code: Sus.KitsA

**Aluminum diffuser**  
Code: D005-AD  
(optional)

**Metal clip**  
Code: WN35-CLIP-M  
(optional)

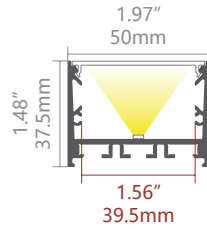
**Wall clip**  
Code: WCLIP  
(optional)

**Joiner 90°A**  
Code: J-90A  
(optional)

**Joiner 120°A**  
Code: J-120A  
(optional)

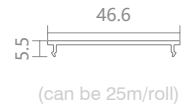
**Joiner 180°A**  
Code: J-180A  
(optional)

## LW-E50



### PMMA diffuser

Code: D050-O (Opal, light trans. > 68%)  
 Code: D050-N (New opal, light trans. > 74%)  
 Code: D050-B (Black, light trans. > 22%)



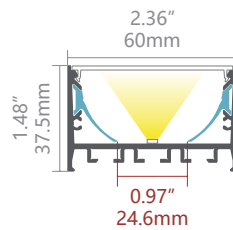
### PC MICRO PRISM Diffuser

Code: D050-MP (Micro prism, trans. > 62%)

### Accessories

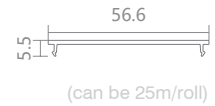
 <b>CNC Aluminium endcap</b> Code: E50-CAP-N	 <b>Suspension kits</b> Code: Sus.KitsA	 <b>ALU Reflector</b> Code: RF (optional)	 <b>Aluminum diffuser</b> Code: D050-AD (optional)
 <b>Aluminium endcap</b> Code: E50-CAP (optional)	 <b>Metal clip</b> Code: MC-E50 (optional)	 <b>Wall clip</b> Code: WCLIP (optional)	 <b>L type stainless steel bracket</b> Code: LW-LMB (optional)
 <b>Joiner 90°A</b> Code: J-90A (optional)	 <b>Joiner 120°A</b> Code: J-120A (optional)	 <b>Joiner 180°A</b> Code: J-180A (optional)	

## LW-E60



### PMMA diffuser

Code: D060-O (Opal, light trans. > 65%)  
 Code: D060-N (New opal, light trans. > 74%)



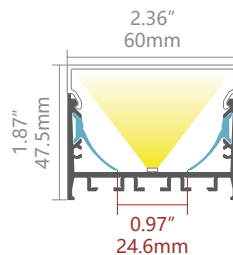
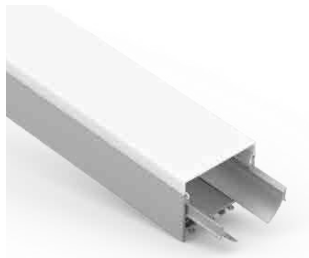
### PC MICRO PRISM Diffuser

Code: D060-MP (Micro prism, trans. > 65%)

### Accessories

 <b>CNC Aluminium endcap</b> Code: E60-CAP-N	 <b>ALU Reflector</b> Code: RF	 <b>Suspension kits</b> Code: Sus.KitsA	 <b>Aluminum diffuser</b> Code: D060-AD (optional)
 <b>Aluminium endcap</b> Code: E60-CAP (optional)	 <b>Metal clip</b> Code: MC-E50 (optional)	 <b>Wall clip</b> Code: WCLIP (optional)	 <b>L type stainless steel bracket</b> Code: LW-LMB (optional)
 <b>Joiner 90°A</b> Code: J-90A (optional)	 <b>Joiner 120°A</b> Code: J-120A (optional)	 <b>Joiner 180°A</b> Code: J-180A (optional)	

## LW-EU60












### PMMA diffuser

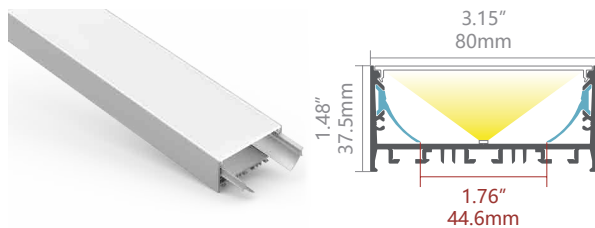
Code: D060U-O (Opal, light trans. > 54%)



### Accessories

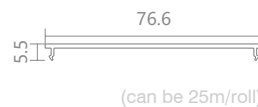
 <b>Aluminium endcap</b> Code: EU60-CAP	 <b>ALU Reflector</b> Code: RF	 <b>Suspension kits</b> Code: Sus.KitsA	 <b>CNC Aluminium endcap</b> Code: EU60-CAP-N (optional)
 <b>Metal clip</b> Code: MC-E50 (optional)	 <b>Wall clip</b> Code: WCLIP (optional)	 <b>Joiner 90°A</b> Code: J-90A (optional)	 <b>Joiner 120°A</b> Code: J-120A (optional)
 <b>Joiner 180°A</b> Code: J-180A (optional)			

## LW-E80




## PMMA diffuser

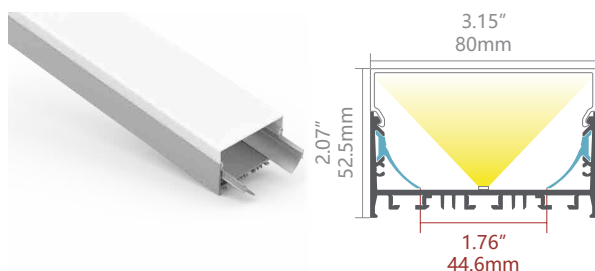
Code: D080-O (Opal, light trans. > 61%)  
Code: D080-N (New opal, light trans. > 74%)



## Accessories

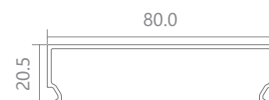
			
<b>CNC Aluminium endcap</b> Code: E80-CAP-N	<b>ALU Reflector</b> Code: RF	<b>Suspension kits</b> Code: Sus.KitsA	<b>Aluminum diffuser</b> Code: D080-AD (optional)
			
<b>Aluminium endcap</b> Code: E80-CAP (optional)	<b>Metal clip</b> Code: MC-E50 (optional)	<b>Wall clip</b> Code: WCLIP (optional)	<b>L type stainless steel bracket</b> Code: LW-LMB (optional)
			
<b>Joiner 90°A</b> Code: J-90A (optional)	<b>Joiner 120°A</b> Code: J-120A (optional)	<b>Joiner 180°A</b> Code: J-180A (optional)	

## LW-EU80












## PMMA Diffuser

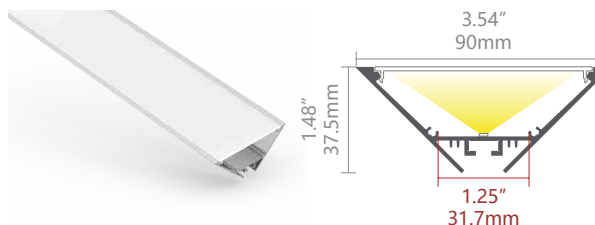
Code: D080U-O (Opal, light trans. > 43%)



## Accessories

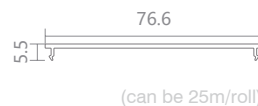
			
<b>Aluminium endcap</b> Code: EU80-CAP	<b>ALU Reflector</b> Code: RF	<b>Suspension kits</b> Code: Sus.KitsA	<b>CNC Aluminium endcap</b> Code: EU80-CAP-N (optional)
			
<b>Metal clip</b> Code: MC-E50 (optional)	<b>Wall clip</b> Code: WCLIP (optional)	<b>Joiner 90°A</b> Code: J-90A (optional)	<b>Joiner 120°A</b> Code: J-120A (optional)
			
<b>Joiner 180°A</b> Code: J-180A (optional)			

## LW-W91








## PMMA diffuser

Code: D080-O (Opal, light trans. > 61%)  
Code: D080-N (New opal, light trans. > 74%)



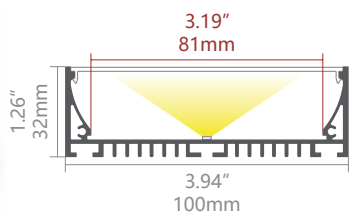
## Accessories

		
<b>Aluminium endcap</b> Code: W91-CAP	<b>Suspension kits</b> Code: Sus.KitsA	<b>Aluminum diffuser</b> Code: D080-AD (optional)
		
<b>Joiner 90°A</b> Code: J-90A (optional)	<b>Joiner 120°A</b> Code: J-120A (optional)	<b>Joiner 180°A</b> Code: J-180A (optional)

## LW-E100



120°



## PC diffuser

Code: E100-O (Opal, light trans. > 72%)



## Accessories



### Aluminium endcap

Code: E100-CAP



### Suspension kits

Code: Sus.KitsA



### Wall clip

Code: WCLIP  
(optional)



### Joiner 90°A

Code: J-90A  
(optional)



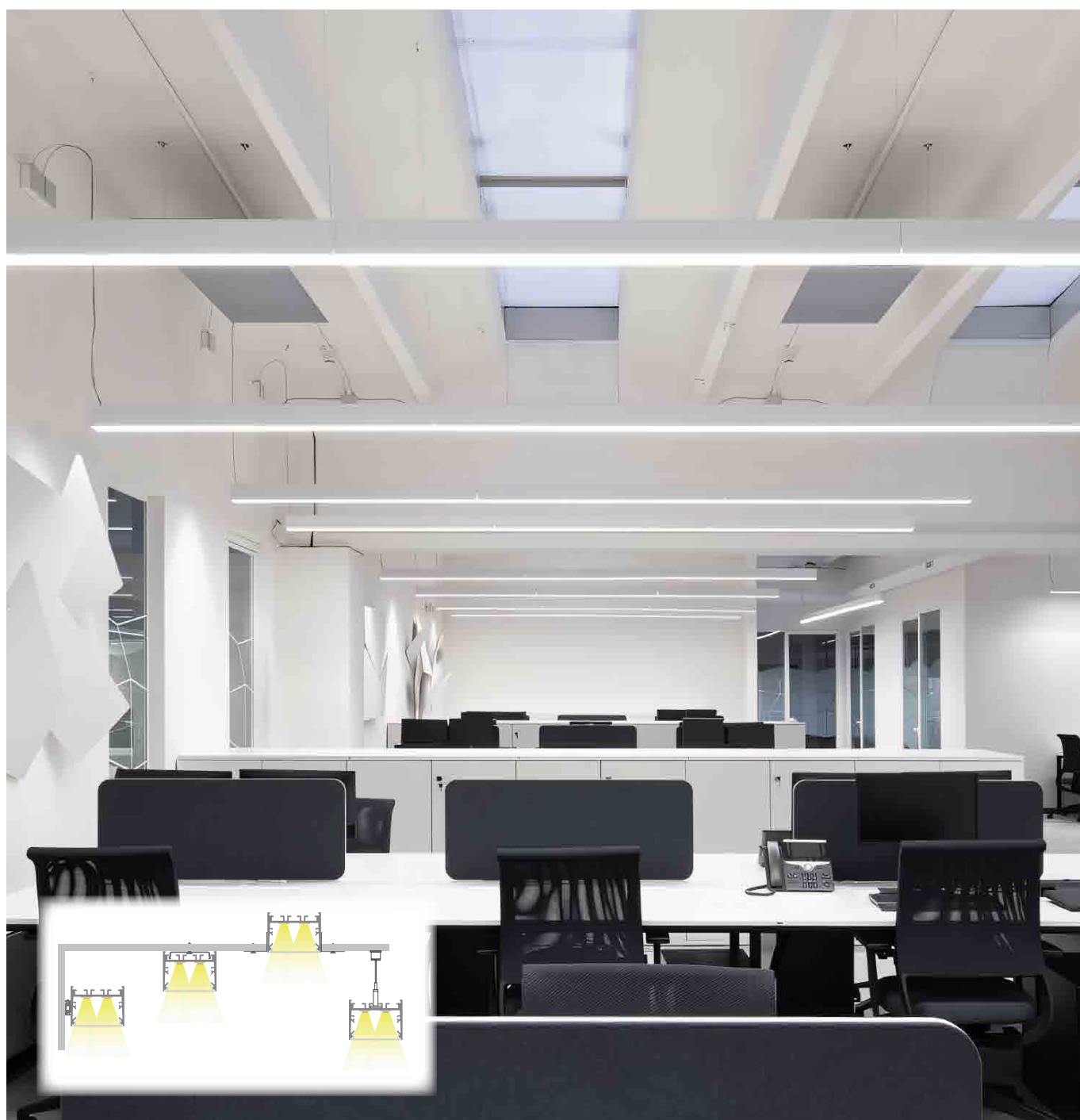
### Joiner 120°A

Code: J-120A  
(optional)



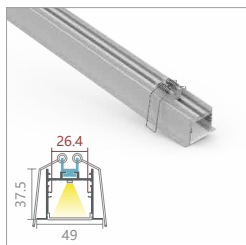
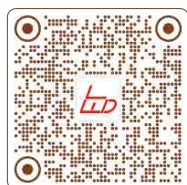
### Joiner 180°A

Code: J-180A  
(optional)

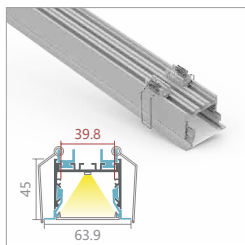


# RECESSED- ARCHITECTURAL

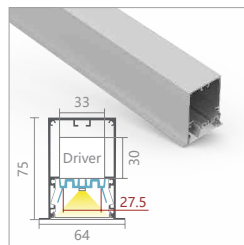
Page 58 - 61



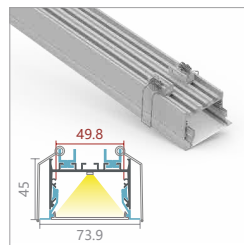
LW-WN31



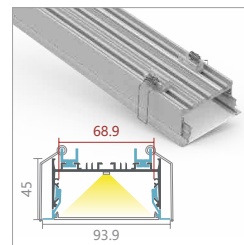
LW-ER50



LW-PR50N

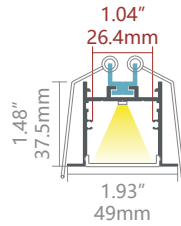


LW-ER60



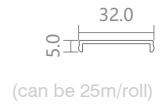
LW-ER80

## LW-WN31



### PMMA Diffuser

Code: D005-O	(Opal, light trans. > 63%)
Code: D005-N	(New opal, light trans. > 74%)
Code: D005-F	(Frost, light trans. > 89%)
Code: D005-C	(Clear, light trans. > 95%)
Code: D005-B	(Black, light trans. > 20%)



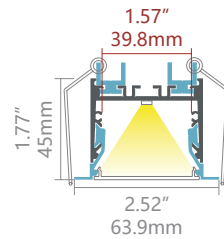
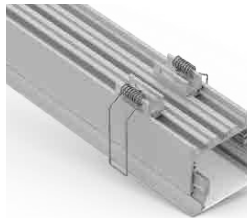
### PC MICRO PRISM Diffuser

Code: D005-MP	(Micro prism, trans. > 66%)
---------------	-----------------------------

### Accessories

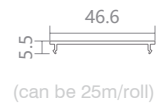
<b>Aluminium endcap</b> Code: WN31-CAP Code: WN31-CAP-H	<b>Spring clip</b> Code: SC-N31	<b>Aluminum diffuser</b> Code: D005-AD (optional)	<b>Metal clip</b> Code: MC-WS31 (optional)
<b>Joiner 90°A</b> Code: J-90A (optional)	<b>Joiner 120°A</b> Code: J-120A (optional)	<b>Joiner 180°A</b> Code: J-180A (optional)	

## LW-ER50



### PMMA diffuser

Code: D050-O	(Opal, light trans. > 68%)
Code: D050-N	(New opal, light trans. > 74%)
Code: D050-B	(Black, light trans. > 22%)



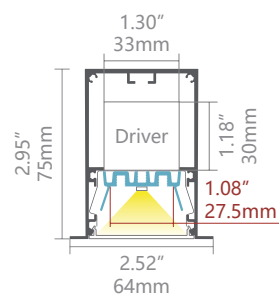
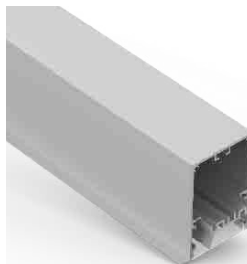
### PC MICRO PRISM Diffuser

Code: D050-MP	(Micro prism, trans. > 62%)
---------------	-----------------------------

### Accessories

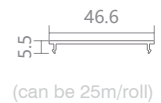
<b>Aluminium endcap</b> Code: ER50-CAP Code: ER50-CAP-H	<b>Spring clip</b> Code: SC-ER	<b>Aluminum diffuser</b> Code: D050-AD (optional)	<b>Joiner 90°A</b> Code: J-90A (optional)
<b>Joiner 120°A</b> Code: J-120A (optional)	<b>Joiner 180°A</b> Code: J-180A (optional)		

## LW-PR50N



### PMMA diffuser

Code: D050-O	(Opal, light trans. > 68%)
Code: D050-N	(New opal, light trans. > 74%)
Code: D050-B	(Black, light trans. > 22%)



### PC MICRO PRISM Diffuser

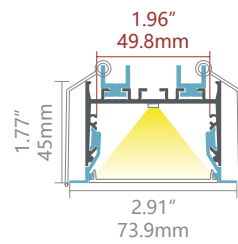
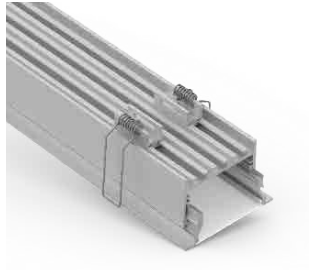
Code: D050-MP	(Micro prism, trans. > 62%)
---------------	-----------------------------

### Accessories

<b>CNC Aluminium endcap</b> Code: PR50N-CAP-N	<b>Gear tray clip</b> Code: P50N-CLIP-GEAR TRAY	<b>Aluminum U clip</b> Code: P50N-CLIP	<b>Aluminum diffuser</b> Code: D050-AD (optional)
<b>Joiner 90°A</b> Code: J-90A (optional)	<b>Joiner 90°B</b> Code: J-90B (optional)	<b>Joiner 120°A</b> Code: J-120A (optional)	<b>Joiner 120°B</b> Code: J-120B (optional)
<b>Joiner 180°A</b> Code: J-180A (optional)	<b>Joiner 180°B</b> Code: J-180B (optional)		



## LW-ER60



### PMMA diffuser

Code: D060-O (Opal, light trans. > 65%)  
Code: D060-N (New opal, light trans. > 74%)

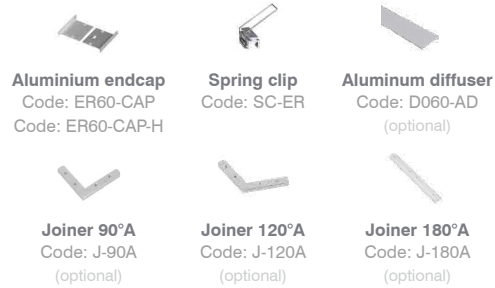


(can be 25m/roll)

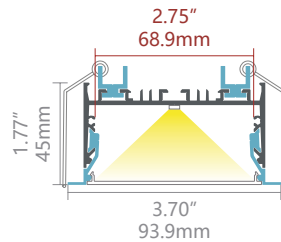
### PC MICRO PRISM Diffuser

Code: D060-MP (Micro prism, trans. > 65%)

### Accessories



## LW-ER80



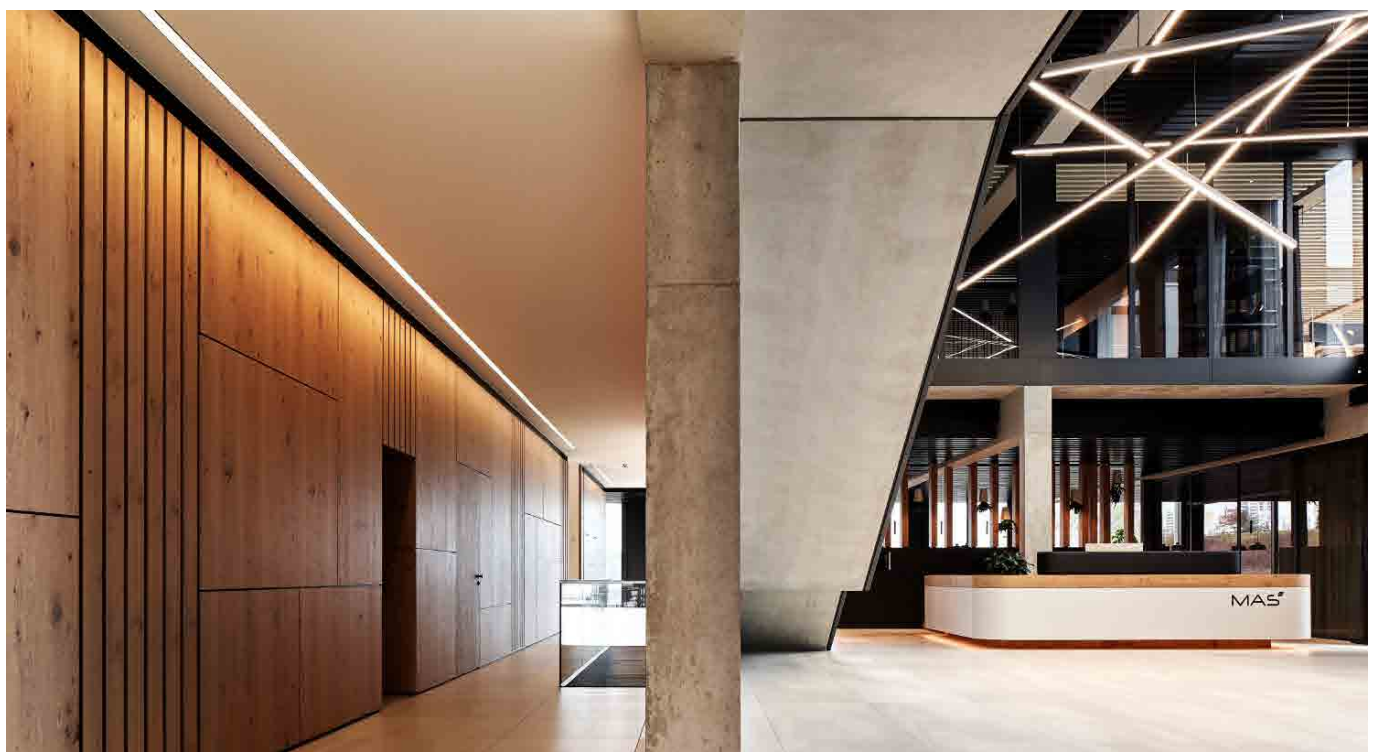
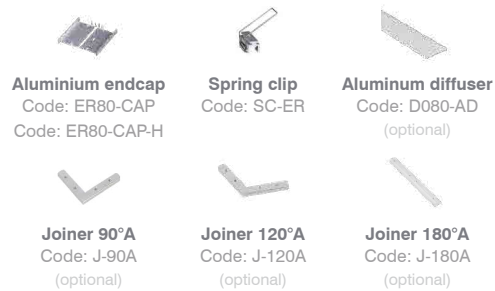
### PMMA diffuser

Code: D080-O (Opal, light trans. > 61%)  
Code: D080-N (New opal, light trans. > 74%)



(can be 25m/roll)

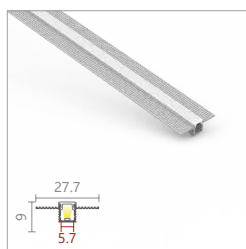
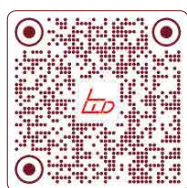
### Accessories



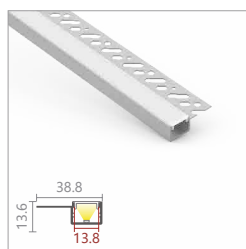


# PLASTER-IN

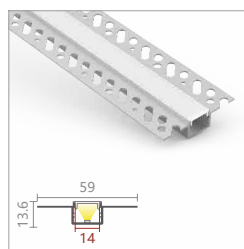
Page 62 - 66



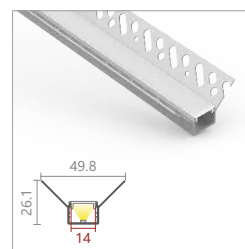
LW-CT9



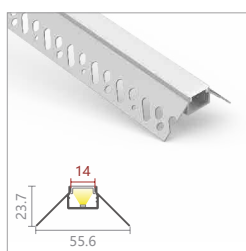
LW-CT5S



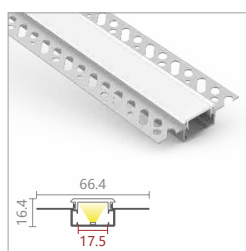
LW-CT5



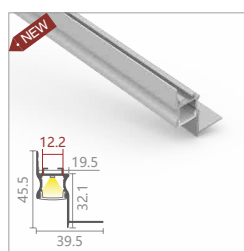
LW-CT6



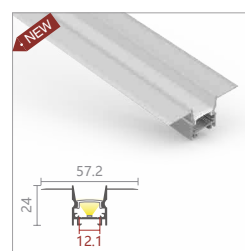
LW-CT7



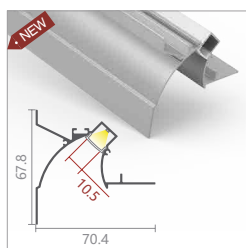
LW-CT4N



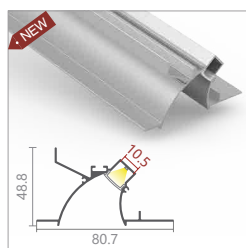
LW-AT7N-1



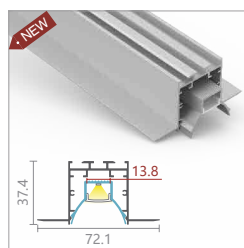
LW-CTD1



LW-CTV1



LW-CTV2

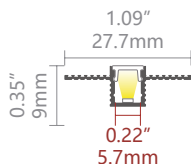
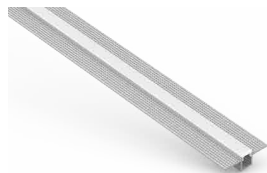


LW-CT38

## LW-CT9



45°



### PC Diffuser

Code: AS9-O (Opal, light trans. > 45%)



### PMMA Diffuser

Code: AS9-B (Black, light trans. > 24%)

(can be 25m/roll)

### Accessories



#### Plastic endcap

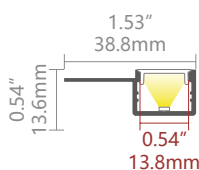
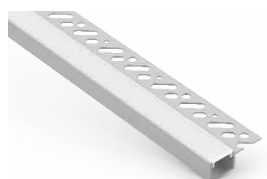
Code: CT9-CAP

Code: CT9-CAP-H

## LW-CT5S



60°



### PMMA Diffuser

Code: D001-O FLAT (Opal, light trans. > 68%)



(can be 25m/roll)

### Accessories



#### Plastic endcap

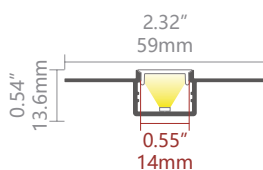
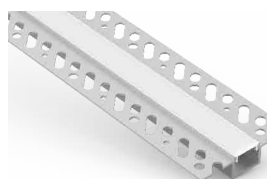
Code: CT5-CAP

Code: CT5-CAP-H

## LW-CT5



60°



### PMMA Diffuser

Code: D001-O FLAT (Opal, light trans. > 68%)



(can be 25m/roll)

### Accessories



#### Plastic endcap

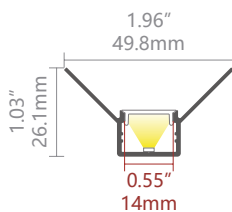
Code: CT5-CAP

Code: CT5-CAP-H

## LW-CT6



60°



### PMMA Diffuser

Code: D001-O FLAT (Opal, light trans. > 68%)



(can be 25m/roll)

### Accessories



#### Plastic endcap

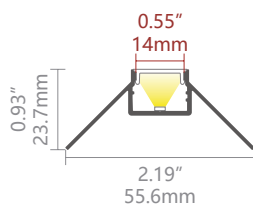
Code: CT5-CAP

Code: CT5-CAP-H

## LW-CT7



60°



### PMMA Diffuser

Code: D001-O FLAT (Opal, light trans. > 68%)



(can be 25m/roll)

### Accessories

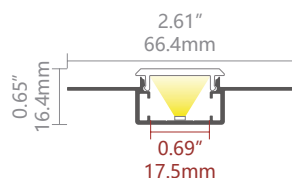
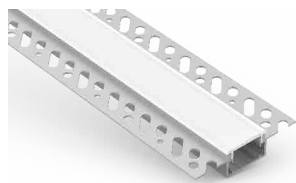


#### Plastic endcap

Code: CT5-CAP

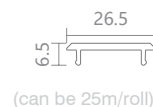
Code: CT5-CAP-H

## LW-CT4N



## PC Diffuser

Code: CT4N-O (Opal, light trans. > 51%)  
Code: CT4N-N (New opal, light trans. > 66%)



(can be 25m/roll)

## Accessories



**Plastic endcap**  
Code: CT4N-CAP  
Code: CT4N-CAP-H



**Joiner 60°B**  
Code: J-60B  
(optional)



**Joiner 90°B**  
Code: J-90B  
(optional)



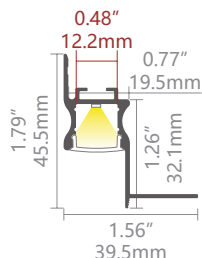
**Joiner 120°B**  
Code: J-120B  
(optional)



**Joiner 180°A**  
Code: J-180A  
(optional)

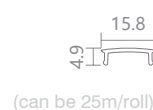
## LW-AT7N-1

**NEW**



## PMMA Diffuser

Code: D001-O (Opal, light trans. > 58%)  
Code: D001-M (Milky, light trans. > 75%)  
Code: D001-F (Frost, light trans. > 88%)  
Code: D001-C (Clear, light trans. > 97%)  
Code: D001-B (Black, light trans. > 21%)



(can be 25m/roll)

## Accessories



**Plastic endcap**  
Code: AS2-CAP  
Code: AS2-CAP-H



**Joiner 90°A**  
Code: J-90A  
(optional)



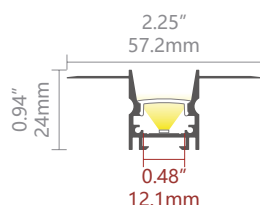
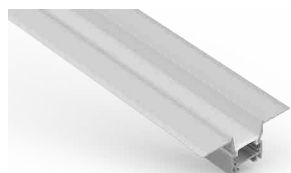
**Joiner 90°B**  
Code: J-90B  
(optional)



**Joiner 180°A**  
Code: J-180A  
(optional)

## LW-CTD1

**NEW**



## PMMA Diffuser

Code: D001-O (Opal, light trans. > 58%)  
Code: D001-M (Milky, light trans. > 75%)  
Code: D001-F (Frost, light trans. > 88%)  
Code: D001-C (Clear, light trans. > 97%)  
Code: D001-B (Black, light trans. > 21%)



(can be 25m/roll)

## Accessories



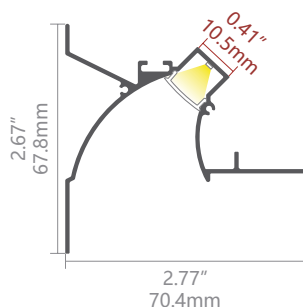
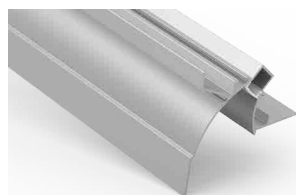
**Aluminium endcap**  
Code: CTD1-CAP  
Code: CTD1-CAP-H



**Joiner 180°A**  
Code: J-180A  
(optional)

## LW-CTV1

**NEW**



## PC Diffuser

Code: CTV1-O (Opal, light trans. > 50%)

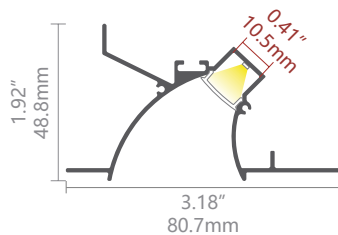
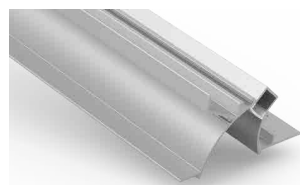


(can be 25m/roll)

## LW-CTV2 NEW



60°



## PC Diffuser

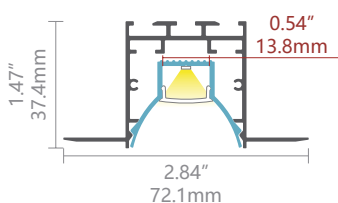
Code: CTV1-O (Opal, light trans. > 50%)



## LW-CT38 NEW



70°



## PMMA Diffuser

Code: D001-O (Opal, light trans. > 58%)  
 Code: D001-M (Milky, light trans. > 75%)  
 Code: D001-F (Frost, light trans. > 88%)  
 Code: D001-C (Clear, light trans. > 97%)  
 Code: D001-B (Black, light trans. > 21%)



(can be 25m/roll)

## Accessories



**Aluminium endcap**  
 Code: CT38-CAP  
 Code: CT38-CAP-H



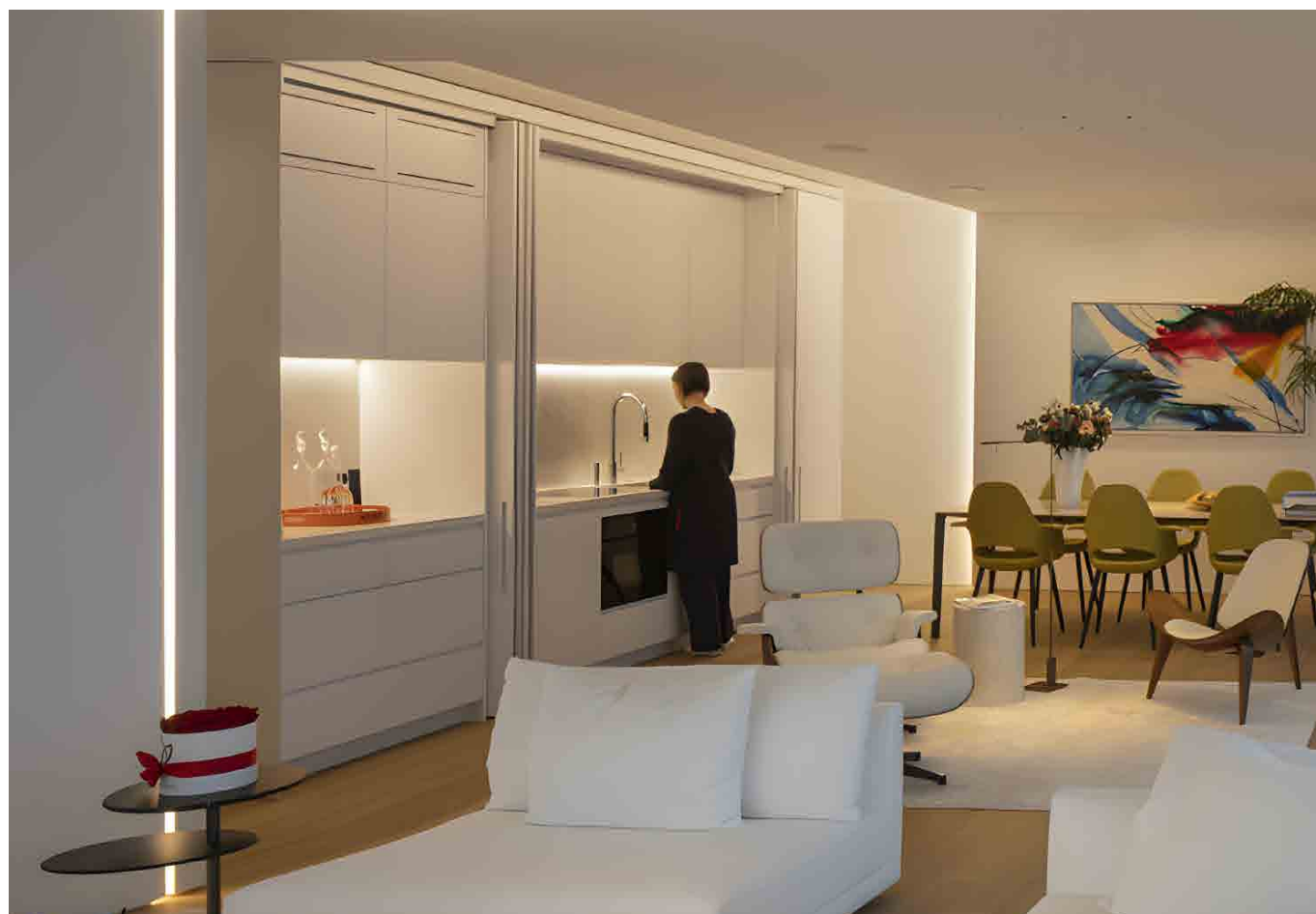
**Joiner 90°A**  
 Code: J-90A  
 (optional)



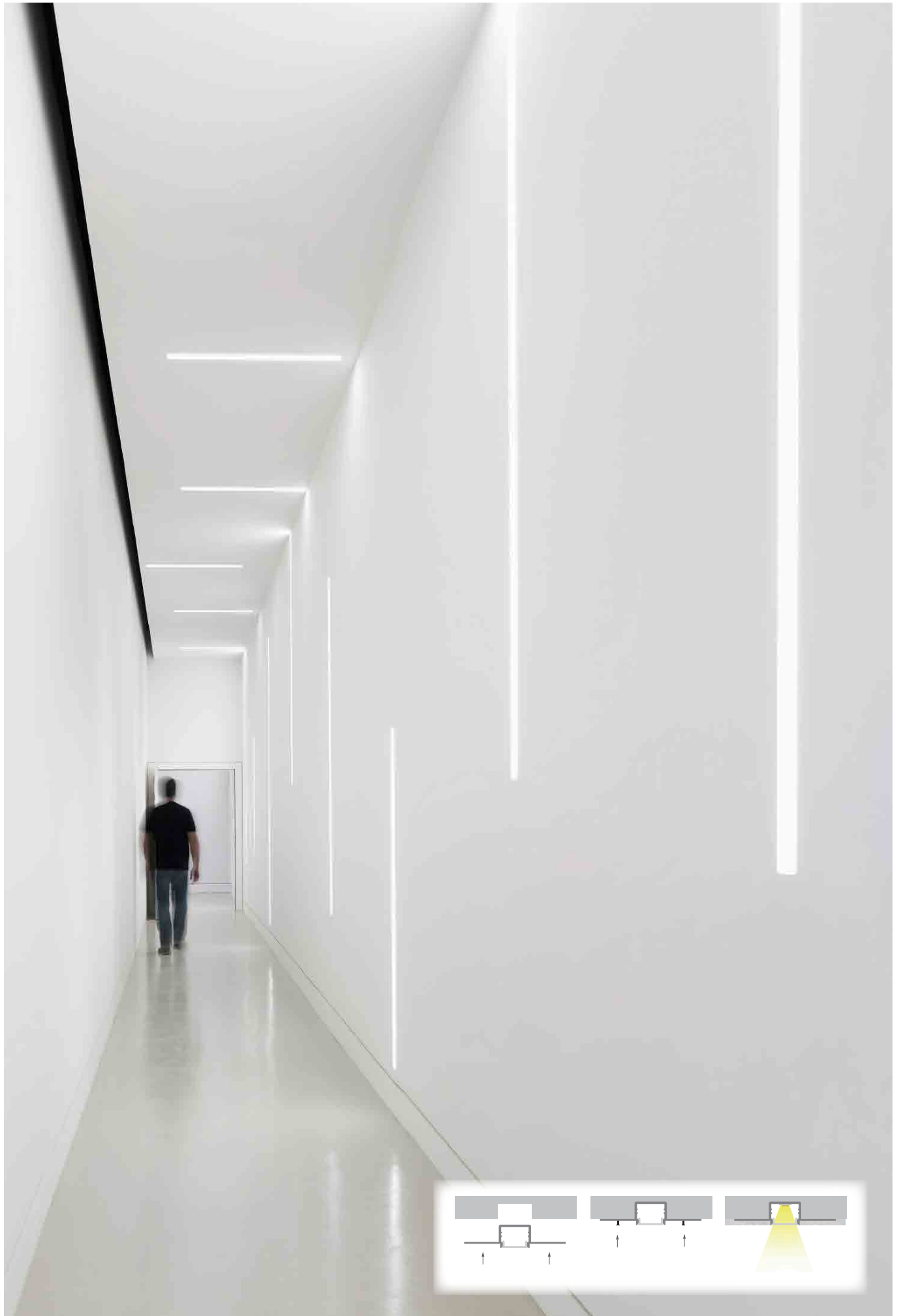
**Joiner 90°B**  
 Code: J-90B  
 (optional)



**Joiner 180°A**  
 Code: J-180A  
 (optional)



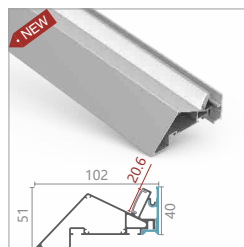
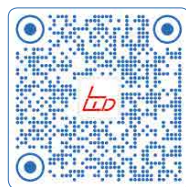






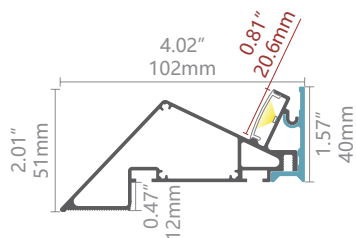
# COVE FRAME SYSTEM

Page 67 - 68



LW-KN1

# LW-KN1 NEW



## PMMA Diffuser

- Code: D003-O (Opal, light trans. > 70%)
- Code: D003-M (Milky, light trans. > 78%)
- Code: D003-F (Frost, light trans. > 91%)
- Code: D003-C (Clear, light trans. > 94%)



(can be 25m/roll)

## Accessories



**Aluminum endcap**  
Code: KN1-CAP-N



**Joiner 90°A**  
Code: J-90A  
(optional)



**Joiner 120°A**  
Code: J-120A  
(optional)



**Joiner 180°A**  
Code: J-180A  
(optional)



**Inside Corner**  
Code: IN-90D  
(optional)



**Outside Corner**  
Code: OUT-90D  
(optional)

**Customized Corners**  
(optional)





## LEDWIDE LIGHTING CO., LTD

<b>Address</b>	1-2/F, Building A2, Sinopol Ind.Park, First Industrial Zone, BaiHua communities, Guangming District,Shenzhen, P.R. China
<b>Postcode</b>	518107
<b>Tel</b>	86 755 29362351
<b>Mobile</b>	0086-018680360436 (Wechat/Whatsapp)
<b>Contact</b>	Ms Lily Liu (sales manager)
<b>Email</b>	info@ledwide.com