

LW-CTA-T

Color Temperature Touch Panel Manual



1. Technical Specs:

Color Temperature Touch Panel

- Input Voltage: AC100~240V
- Output Signal: RF 2.4G + DMX512
- RF Remote Distance: 30m
- Control Mode: 4 Zones Control
- Working Temperature: -20°C~60°C
- Package Size: L113×W112×H50(mm)
- Weight(N.W.): 225g

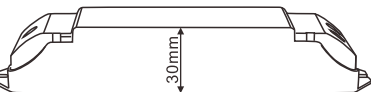
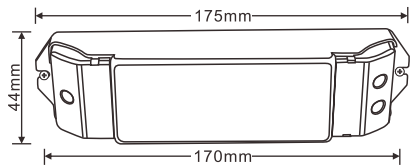
CV Receiver **LW-WR-CV**

- Input Voltage: DC5V~DC24V
- Max Current Load: 5A × 4CH Max. 20A
- Max Output Power: 100W/240W/480W(5V/12V/24V)
- Working Temperature: -30°C~55°C
- Package Size: L178×W48×H33(mm)
- Weight(G.W.): 150g

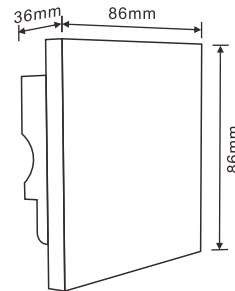
CC Receiver **WIFI-LED-RECEIVER-CC**

- Input Voltage: DC12V~DC48V
- Output Voltage: DC3V~DC46V
- Output Current: CC 350/700/1050mA×4CH
- Output Power: 1.05W~48.3W×4CH Max193.2W
- Working Temperature: -30°C~55°C
- Package Size: L178×W48×H33(mm)
- Weight(G.W.): 165g

2. Product Size:



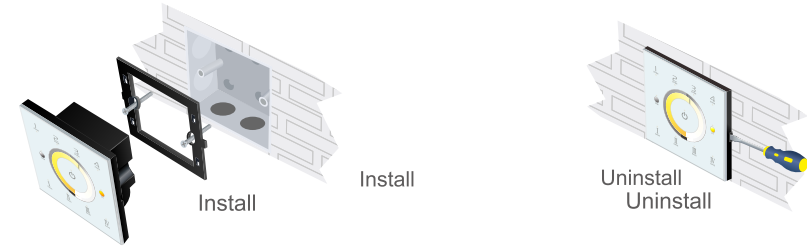
Receiver - constant voltage or current



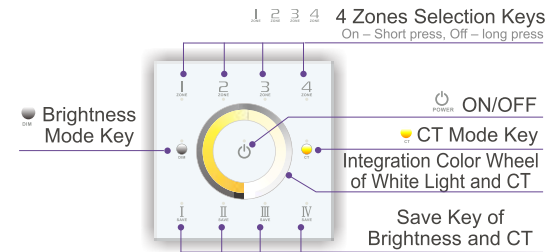
Touch Panel

Color Temperature Touch Panel Manual

3. Installation Instruction:

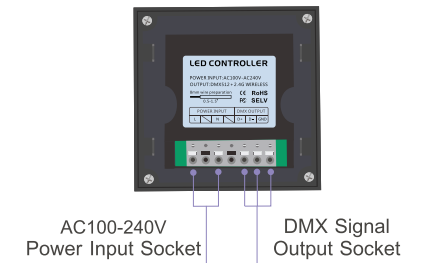


4. Key Functions:

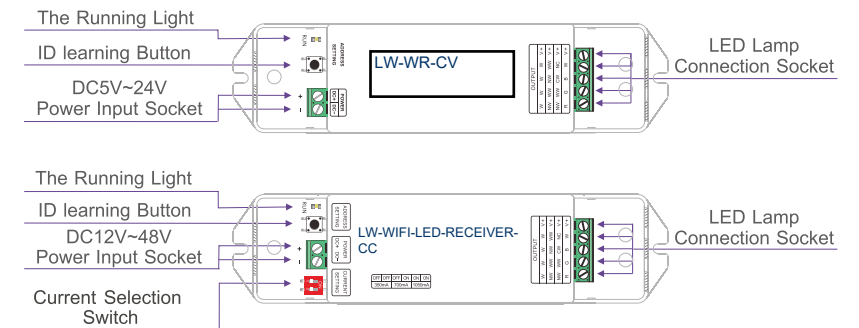


* Long press to turn on/off the tone.

5. Terminals:



6. Operating Instruction for Receiver:



(Operation Table)

OFF	OFF	OFF	ON	ON	ON
350mA	700mA				1050mA

Short press "ID learning button" on the R4-5A/

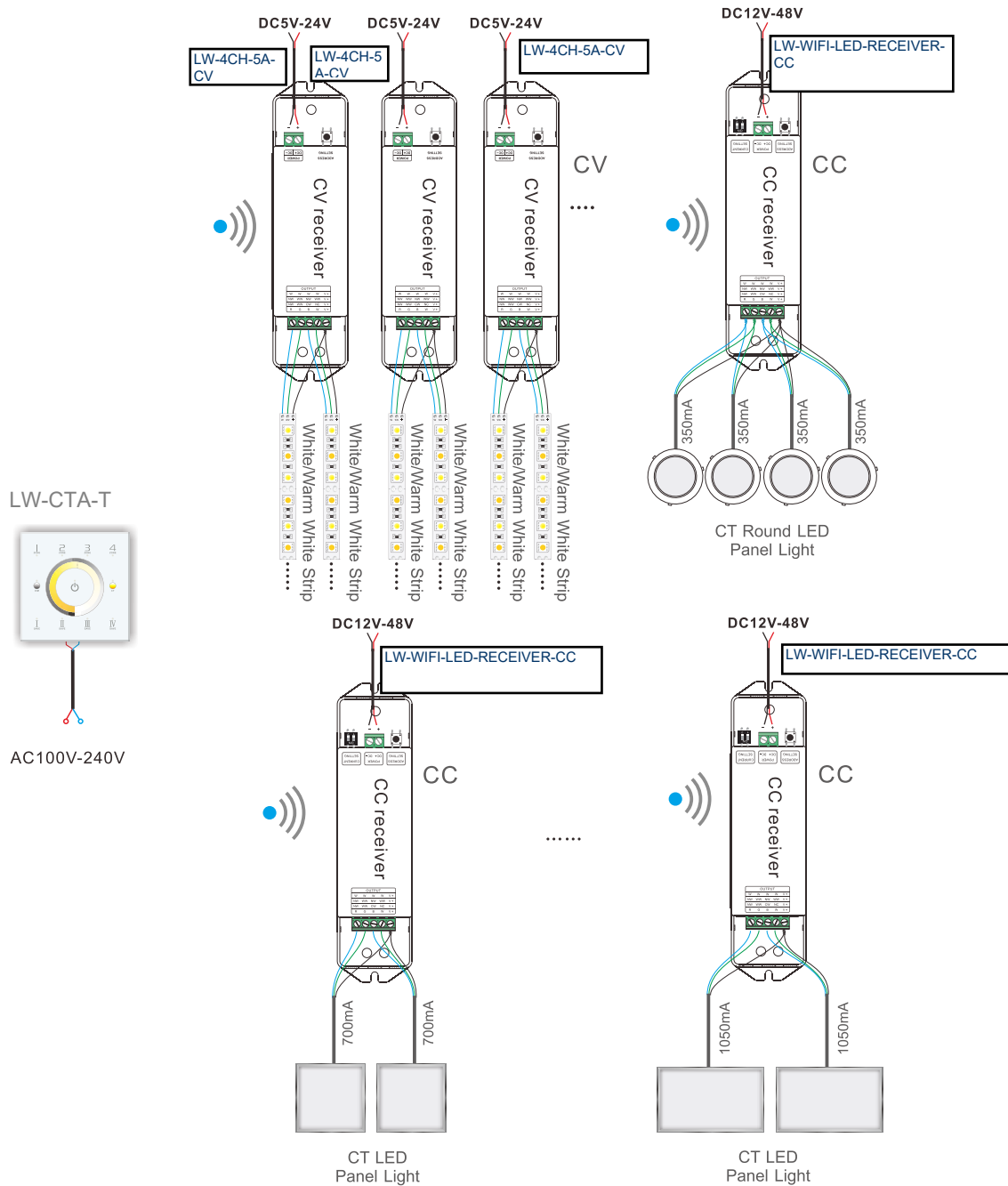
7. The Learning ID Method :

Learning ID: Short Press "ID learning button" on the LW-WR-CV or LW-WIFI-LED-RECEIVER-CC the running late keeps on. Then press any zone number on the LW-CTA-T wall panel. The running late 'Blinks' several times to confirm set up

Canceling ID: Long Press "ID learning button" on the LW-WR-CV or LW-WIFI-LED-RECEIVER-CC for 5 seconds. The running light will blink several times to confirm pairing is cancelled

Note: Multiple receivers for each zone can be paired to 1 remote

8. Wiring Diagram 1 (Wireless Control):



9. Wiring Diagram 2 (Connect to DMX Decoder):

