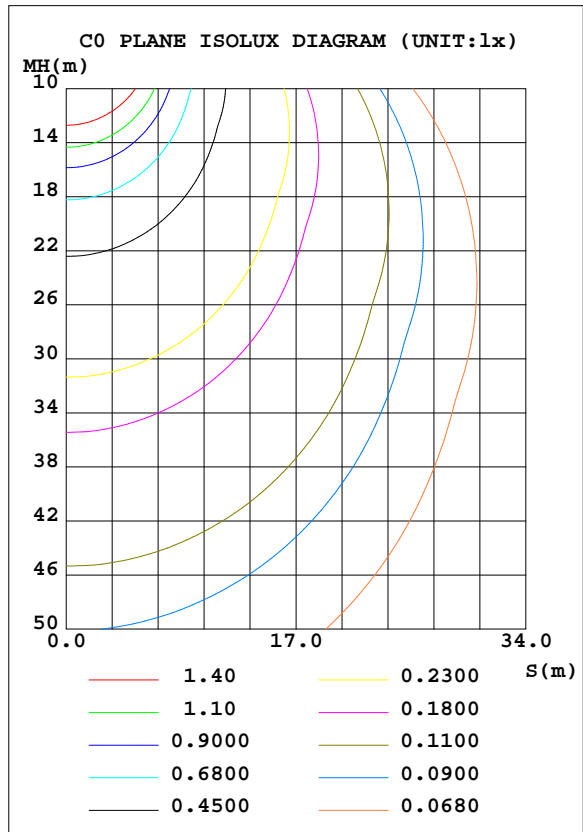
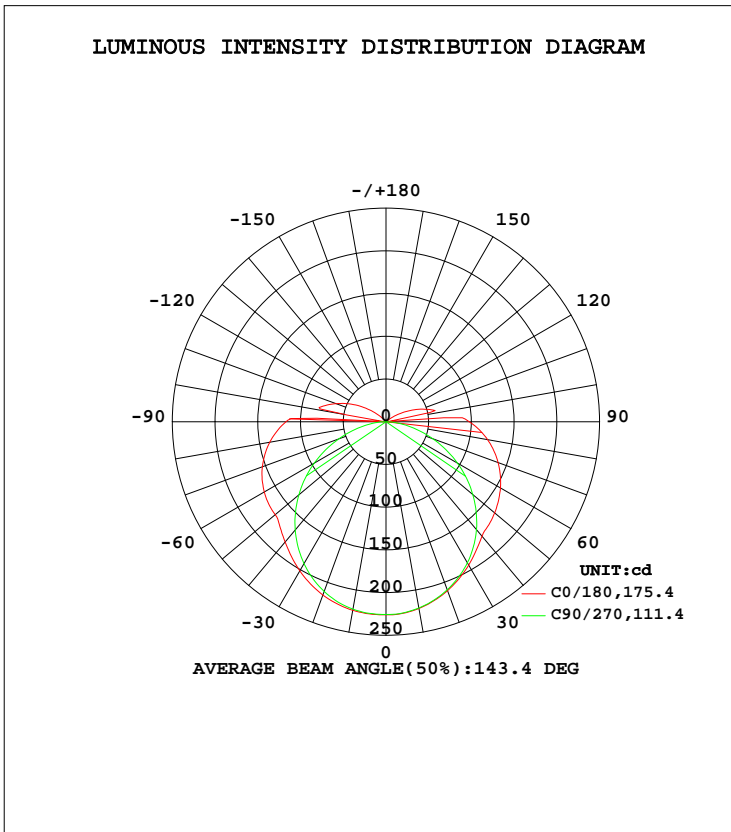


LUMINAIRE PHOTOMETRIC TEST REPORT

Test:U:24.00V I:0.5850A P:14.04W PF:1.000 Freq:0Hz Lamp Flux:918.718x1 lm		
NAME: LED Linear Light	TYPE:LED	WEIGHT:N/A
SPEC.:N/A	DIM.:	SERIAL No.:N/A
MFR.: LEDWIDE LIGHTING CO., LTD	SUR.:	Shielding Angle:N/A

DATA OF LAMP		PHOTOMETRIC DATA Eff: 65.43 lm/W			
MODEL	AC1-O-14.4W	I _{max} (cd)	226.1	S/MH(C0/180)	1.33
NOMINAL POWER(W)	14.4	LOR(%)	100.0	S/MH(C90/270)	1.26
RATED VOLTAGE(V)	24	TOTAL FLUX(lm)	918.72	η UP, DN(C0-180)	4.0,45.2
NOMINAL FLUX(lm)	918.718	CIE CLASS	DIRECT	η UP, DN(C180-360)	4.5,46.3
LAMPS INSIDE	1	η up(%)	8.5	CIBSE SHR NOM	1.50
TEST VOLTAGE(V)	24	η down(%)	91.5	CIBSE SHR MAX	1.50



C Range: 0 - 360DEG
 C Interval: 22.5DEG
 Test Speed: HIGH
 Temperature:24.5DEG
 Operators:Seth
 Test Date:2016-09-18

γ Range: 0 - 180DEG
 γ Interval: 1.0DEG
 Test System:EVERFINE GO-R5000_V2 SYSTEM V2.0.352
 Humidity:65.7%
 Test Distance:26.000m [K=1.3361]
 Remarks:

ZONAL FLUX DIAGRAM

ZONAL FLUX DIAGRAM:

γ	C0	C45	C90	C135	C180	C225	C270	C315	γ	Φ zone	Φ total	%lum,lamp
10	222.0	219.4	221.4	223.5	224.0	224.1	222.8	221.2	0- 10	21.38	21.38	2.33,2.33
20	210.5	206.9	209.4	213.3	215.8	216.1	211.4	209.6	10- 20	61.48	82.86	9.02,9.02
30	193.7	188.2	190.6	196.2	201.6	200.3	191.9	191.0	20- 30	93.85	176.7	19.2,19.2
40	175.0	165.0	164.7	173.2	183.6	177.7	165.2	167.5	30- 40	114.7	291.4	31.7,31.7
50	166.0	140.7	132.6	147.9	169.3	151.7	133.2	143.6	40- 50	123.3	414.7	45.1,45.1
60	154.7	125.7	96.36	127.7	164.4	129.0	96.98	128.4	50- 60	123.4	538.1	58.6,58.6
70	139.7	110.9	58.35	114.9	154.0	115.8	58.97	111.4	60- 70	116.5	654.6	71.3,71.3
80	120.8	92.22	23.67	98.26	138.1	98.80	24.51	92.93	70- 80	102.7	757.3	82.4,82.4
90	97.51	68.40	0.4552	77.30	117.2	78.38	0.7958	70.18	80- 90	83.08	840.4	91.5,91.5
100	0.8103	23.25	0	32.83	46.10	30.00	0.2719	26.85	90-100	25.46	865.9	94.2,94.2
110	43.28	16.99	0	27.08	62.27	26.01	0.2719	18.24	100-110	29.10	895.0	97.4,97.4
120	20.13	2.692	0	11.32	38.23	10.55	0.2719	3.540	110-120	17.04	912.0	99.3,99.3
130	1.878	0.3429	0	0.2708	14.94	0.1380	0.2719	0.2685	120-130	5.657	917.7	99.9,99.9
140	0.2702	0.2070	0	0.2014	0.2702	0.1380	0.2719	0.2685	130-140	0.7240	918.4	100,100
150	0.2026	0.2070	0	0.2014	0.2702	0.2756	0.2719	0.2685	140-150	0.1323	918.5	100,100
160	0.2026	0.2070	0	0.2014	0.2702	0.2070	0.2719	0.3356	150-160	0.1001	918.6	100,100
170	0.2026	0.2070	0	0.2014	0.2702	0.2070	0.2719	0.3356	160-170	0.0613	918.7	100,100
180	0.2026	0.2070	0	0.2014	0.2702	0.2070	0.2719	0.3356	170-180	0.0201	918.7	100,100
DEG	LUMINOUS INTENSITY:cd									UNIT:lm		

Conical surface Flux(90deg): 352.61 lm

%lum = 38.4%

%lamp = 38.4%

Conical surface Flux(120deg): 538.14 lm

%lum = 58.6%

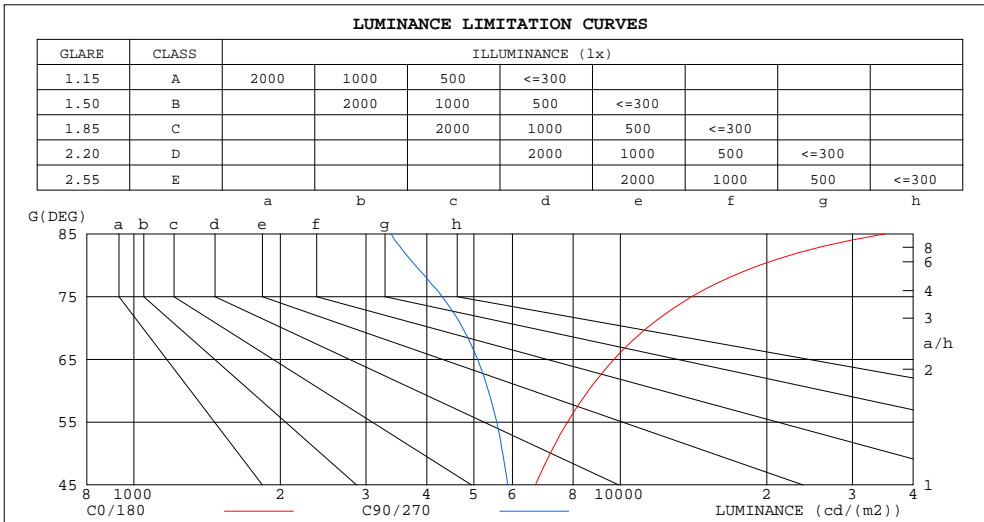
%lamp = 58.6%

C Range: 0 - 360DEG
 C Interval: 22.5DEG
 Test Speed: HIGH
 Temperature:24.5DEG
 Operators:Seth
 Test Date:2016-09-18

γ Range: 0 - 180DEG
 γ Interval: 1.0DEG
 Test System:EVERFINE GO-R5000_V2 SYSTEM V2.0.352
 Humidity:65.7%
 Test Distance:26.000m [K=1.3361]
 Remarks:

LUMINANCE LIMITATION CURVES

Test:U:24.00V I:0.5850A P:14.04W PF:1.000 Freq:0Hz Lamp Flux:918.718x1 lm		
NAME: LED Linear Light	TYPE:LED	WEIGHT:N/A
SPEC.:N/A	DIM.:	SERIAL No.:N/A
MFR.: LEDWIDE LIGHTING CO., LTD	SUR.:	Shielding Angle:N/A



LUMINANCE cd/(m2)		
G(DEG)	C0/180	C90/270
85	35009	3380
80	19327	3786
75	14022	4298
70	11345	4739
65	9705	5090
60	8594	5353
55	7786	5572
50	7175	5731
45	6690	5865

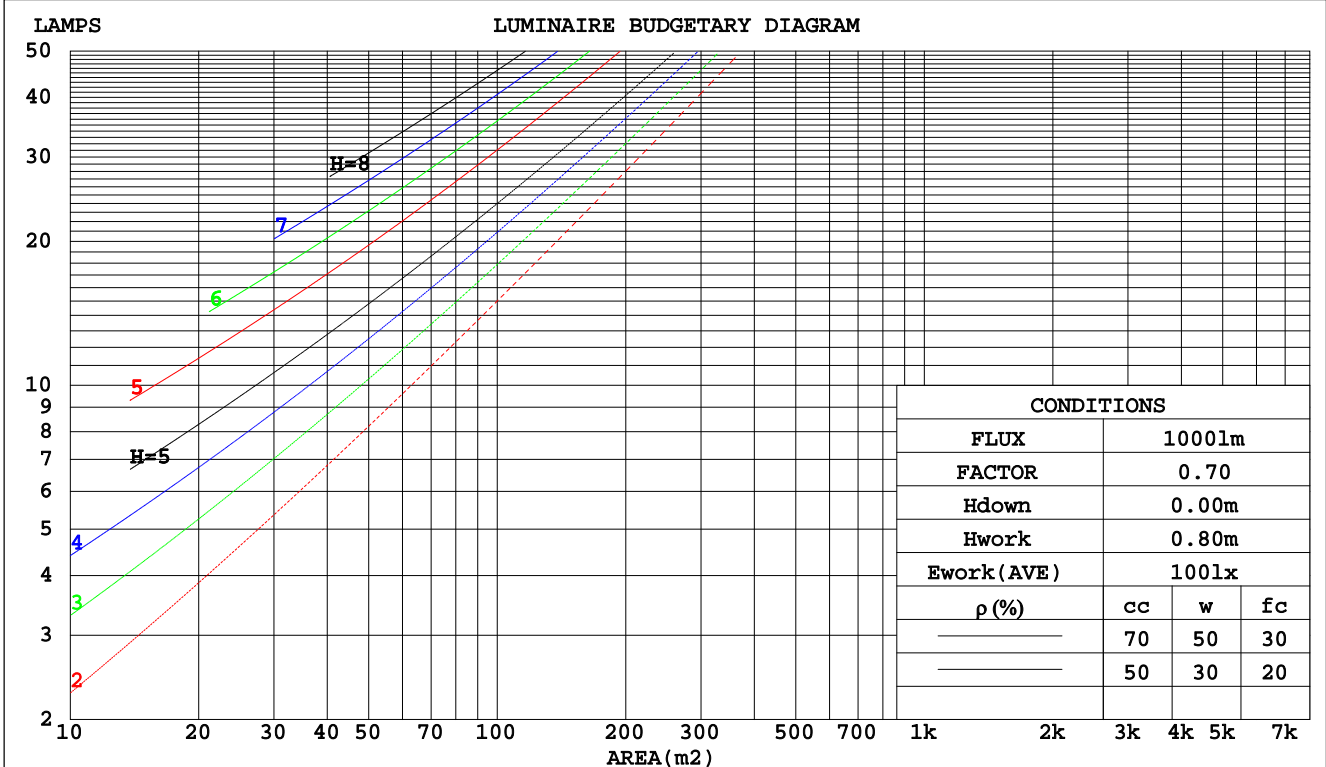
C Range: 0 - 360DEG
 C Interval: 22.5DEG
 Test Speed: HIGH
 Temperature:24.5DEG
 Operators:Seth
 Test Date:2016-09-18

γ Range: 0 - 180DEG
 γ Interval: 1.0DEG
 Test System:EVERFINE GO-R5000_V2 SYSTEM V2.0.352
 Humidity:65.7%
 Test Distance:26.000m [K=1.3361]
 Remarks:

CU AND LUMINAIRE BUDGETARY ESTIMATE DIAGRAM

Test:U:24.00V I:0.5850A P:14.04W PF:1.000 Freq:0Hz Lamp Flux:918.718x1 lm		
NAME: LED Linear Light	TYPE:LED	WEIGHT:N/A
SPEC.:N/A	DIM.:	SERIAL No.:N/A
MFR.: LEDWIDE LIGHTING CO., LTD	SUR.:	Shielding Angle:N/A

pcc	80%			70%			50%			30%			10%			0
pw	50%	30%	10%	50%	30%	10%	50%	30%	10%	50%	30%	10%	50%	30%	10%	0
pfc	20%			20%			20%			20%			20%			0
RCR	RCR:Room Cavity Ratio						Coefficients of Utilization(CU)									
0.0	1.17	1.17	1.17	1.13	1.13	1.13	1.06	1.06	1.06	1.00	1.00	1.00	.94	.94	.94	.91
1.0	.97	.91	.86	.93	.88	.84	.87	.83	.79	.82	.79	.75	.77	.74	.72	.69
2.0	.82	.74	.67	.80	.72	.66	.75	.68	.63	.70	.65	.60	.65	.61	.57	.55
3.0	.71	.62	.54	.69	.60	.53	.65	.57	.51	.61	.54	.49	.57	.52	.47	.45
4.0	.63	.53	.45	.61	.52	.44	.57	.49	.43	.53	.47	.41	.50	.45	.40	.37
5.0	.56	.46	.38	.54	.45	.38	.51	.43	.37	.48	.41	.35	.45	.39	.34	.32
6.0	.50	.40	.33	.48	.39	.33	.46	.38	.32	.43	.36	.31	.41	.35	.30	.27
7.0	.45	.36	.29	.44	.35	.29	.41	.34	.28	.39	.32	.27	.37	.31	.26	.24
8.0	.41	.32	.26	.40	.31	.25	.38	.30	.25	.36	.29	.24	.34	.28	.23	.21
9.0	.37	.29	.23	.37	.28	.23	.35	.27	.22	.33	.26	.22	.31	.25	.21	.19
10.0	.35	.26	.21	.34	.26	.21	.32	.25	.20	.31	.24	.20	.29	.23	.19	.17



C Range: 0 - 360DEG
 C Interval: 22.5DEG
 Test Speed: HIGH
 Temperature:24.5DEG
 Operators:Seth
 Test Date:2016-09-18

γ Range: 0 - 180DEG
 γ Interval: 1.0DEG
 Test System:EVERFINE GO-R5000_V2 SYSTEM V2.0.352
 Humidity:65.7%
 Test Distance:26.000m [K=1.3361]
 Remarks:

WEC AND CCEC

Test:U:24.00V I:0.5850A P:14.04W PF:1.000 Freq:0Hz Lamp Flux:918.718x1 lm		
NAME: LED Linear Light	TYPE:LED	WEIGHT:N/A
SPEC.:N/A	DIM.:	SERIAL No.:N/A
MFR.: LEDWIDE LIGHTING CO., LTD	SUR.:	Shielding Angle:N/A

ρcc	80%			70%			50%			30%			10%			0
ρw	50%	30%	10%	50%	30%	10%	50%	30%	10%	50%	30%	10%	50%	30%	10%	0
ρfc	20%			20%			20%			20%			20%			0
RCR	RCR:Room Cavity Ratio						Wall Exitance Coefficients(WEC)									
0.0																
1.0	.410	.233	.074	.400	.228	.072	.381	.219	.070	.364	.210	.067	.348	.202	.065	
2.0	.350	.192	.059	.341	.188	.058	.324	.180	.056	.309	.173	.054	.295	.167	.053	
3.0	.308	.164	.049	.300	.161	.048	.286	.155	.047	.272	.149	.046	.259	.143	.044	
4.0	.276	.143	.042	.269	.141	.042	.256	.136	.040	.243	.131	.039	.231	.126	.038	
5.0	.250	.127	.037	.244	.125	.036	.231	.121	.035	.220	.116	.035	.210	.112	.034	
6.0	.228	.114	.033	.223	.112	.032	.212	.108	.032	.201	.105	.031	.192	.101	.030	
7.0	.210	.104	.029	.205	.102	.029	.195	.099	.028	.186	.095	.028	.177	.092	.027	
8.0	.195	.095	.027	.190	.093	.026	.181	.090	.026	.172	.087	.025	.164	.084	.025	
9.0	.181	.088	.024	.177	.086	.024	.169	.083	.024	.161	.081	.023	.154	.078	.023	
10.0	.169	.081	.023	.165	.080	.022	.158	.077	.022	.151	.075	.021	.144	.072	.021	

ρcc	80%			70%			50%			30%			10%			0
ρw	50%	30%	10%	50%	30%	10%	50%	30%	10%	50%	30%	10%	50%	30%	10%	0
ρfc	20%			20%			20%			20%			20%			0
RCR	RCR:Room Cavity Ratio						Ceiling Cavity Exitance Coefficients(CCEC)									
0.0	.255	.255	.255	.218	.218	.218	.149	.149	.149	.086	.086	.086	.027	.027	.027	
1.0	.253	.221	.192	.216	.189	.165	.148	.130	.114	.085	.075	.066	.027	.024	.021	
2.0	.246	.198	.157	.211	.170	.136	.144	.118	.095	.083	.068	.055	.027	.022	.018	
3.0	.238	.181	.135	.204	.156	.117	.140	.108	.082	.081	.063	.048	.026	.021	.016	
4.0	.230	.168	.121	.197	.145	.105	.136	.101	.074	.079	.059	.044	.025	.019	.014	
5.0	.222	.158	.111	.191	.137	.097	.131	.096	.068	.076	.056	.040	.025	.018	.013	
6.0	.214	.150	.104	.184	.130	.091	.127	.091	.064	.074	.054	.038	.024	.017	.013	
7.0	.207	.143	.099	.178	.124	.086	.123	.087	.061	.071	.051	.036	.023	.017	.012	
8.0	.200	.138	.095	.172	.119	.083	.119	.084	.059	.069	.049	.035	.022	.016	.012	
9.0	.193	.133	.092	.167	.115	.080	.115	.081	.057	.067	.048	.034	.022	.016	.011	
10.0	.187	.128	.089	.161	.112	.078	.112	.078	.055	.065	.046	.033	.021	.015	.011	

C Range: 0 - 360DEG
 C Interval: 22.5DEG
 Test Speed: HIGH
 Temperature:24.5DEG
 Operators:Seth
 Test Date:2016-09-18

γ Range: 0 - 180DEG
 γ Interval: 1.0DEG
 Test System:EVERFINE GO-R5000_V2 SYSTEM V2.0.352
 Humidity:65.7%
 Test Distance:26.000m [K=1.3361]
 Remarks:

UGR(Unified Glare Rating) Table

Test:U:24.00V I:0.5850A P:14.04W PF:1.000 Freq:0Hz Lamp Flux:918.718x1 lm										
NAME: LED Linear Light					TYPE:LED			WEIGHT:N/A		
SPEC.:N/A					DIM.:			SERIAL No.:N/A		
MFR.: LEDWIDE LIGHTING CO., LTD					SUR.:			Shielding Angle:N/A		
ceiling/cavity	0.7	0.7	0.5	0.5	0.3	0.7	0.7	0.5	0.5	0.3
walls	0.5	0.3	0.5	0.3	0.3	0.5	0.3	0.5	0.3	0.3
working plane	0.2	0.2	0.2	0.2	0.2	0.2	0.2	0.2	0.2	0.2
Room dimensions	Viewed crosswise					Viewed endwise				
x = 2H y = 2H	19.6	21.2	20.0	21.5	21.9	17.6	19.1	18.0	19.5	19.9
3H	22.5	24.0	23.0	24.3	24.8	19.1	20.6	19.6	21.0	21.4
4H	24.1	25.5	24.6	25.9	26.3	19.8	21.2	20.3	21.6	22.0
6H	25.8	27.1	26.3	27.5	28.0	20.3	21.6	20.8	22.0	22.5
8H	26.8	28.0	27.2	28.4	28.9	20.5	21.7	21.0	22.2	22.7
12H	27.8	29.0	28.3	29.5	30.0	20.6	21.8	21.1	22.3	22.8
4H 2H	20.3	21.6	20.7	22.0	22.5	18.8	20.2	19.2	20.6	21.0
3H	23.4	24.6	23.9	25.1	25.6	20.6	21.8	21.1	22.3	22.8
4H	25.2	26.3	25.7	26.8	27.3	21.5	22.6	22.0	23.1	23.6
6H	27.1	28.2	27.7	28.7	29.2	22.2	23.2	22.7	23.7	24.3
8H	28.2	29.1	28.7	29.7	30.2	22.5	23.4	23.0	24.0	24.5
12H	29.4	30.3	29.9	30.8	31.4	22.7	23.6	23.3	24.1	24.7
8H 4H	25.6	26.6	26.2	27.1	27.7	22.7	23.7	23.3	24.2	24.8
6H	27.9	28.7	28.4	29.2	29.8	23.9	24.7	24.5	25.2	25.9
8H	29.2	29.9	29.7	30.5	31.1	24.4	25.1	25.0	25.7	26.3
12H	30.6	31.2	31.2	31.8	32.5	24.8	25.4	25.4	26.0	26.7
12H 4H	25.6	26.5	26.2	27.1	27.7	23.2	24.0	23.7	24.6	25.2
6H	28.0	28.7	28.6	29.3	30.0	24.6	25.3	25.1	25.9	26.5
8H	29.4	30.1	30.0	30.6	31.3	25.2	25.9	25.9	26.5	27.1
Variations with the observer position at spacings:										
S = 1.0H	+ 0.1 / - 0.1					+ 0.1 / - 0.1				
1.5H	+ 0.2 / - 0.3					+ 0.2 / - 0.2				
2.0H	+ 0.3 / - 0.4					+ 0.2 / - 0.3				

CIE Pub.117 Corrected 918.7 lm Total Lamp Luminous Flux. (8log(F/F0) = -0.3)

C Range: 0 - 360DEG
C Interval: 22.5DEG
Test Speed: HIGH
Temperature:24.5DEG
Operators:Seth
Test Date:2016-09-18

γ Range: 0 - 180DEG
 γ Interval: 1.0DEG
Test System:EVERFINE GO-R5000_V2 SYSTEM V2.0.352
Humidity:65.7%
Test Distance:26.000m [K=1.3361]
Remarks:

UTILIZATION FACTORS TABLE

Test:U:24.00V I:0.5850A P:14.04W PF:1.000 Freq:0Hz Lamp Flux:918.718x1 lm		
NAME: LED Linear Light	TYPE:LED	WEIGHT:N/A
SPEC.:N/A	DIM.:	SERIAL No.:N/A
MFR.: LEDWIDE LIGHTING CO., LTD	SUR.:	Shielding Angle:N/A

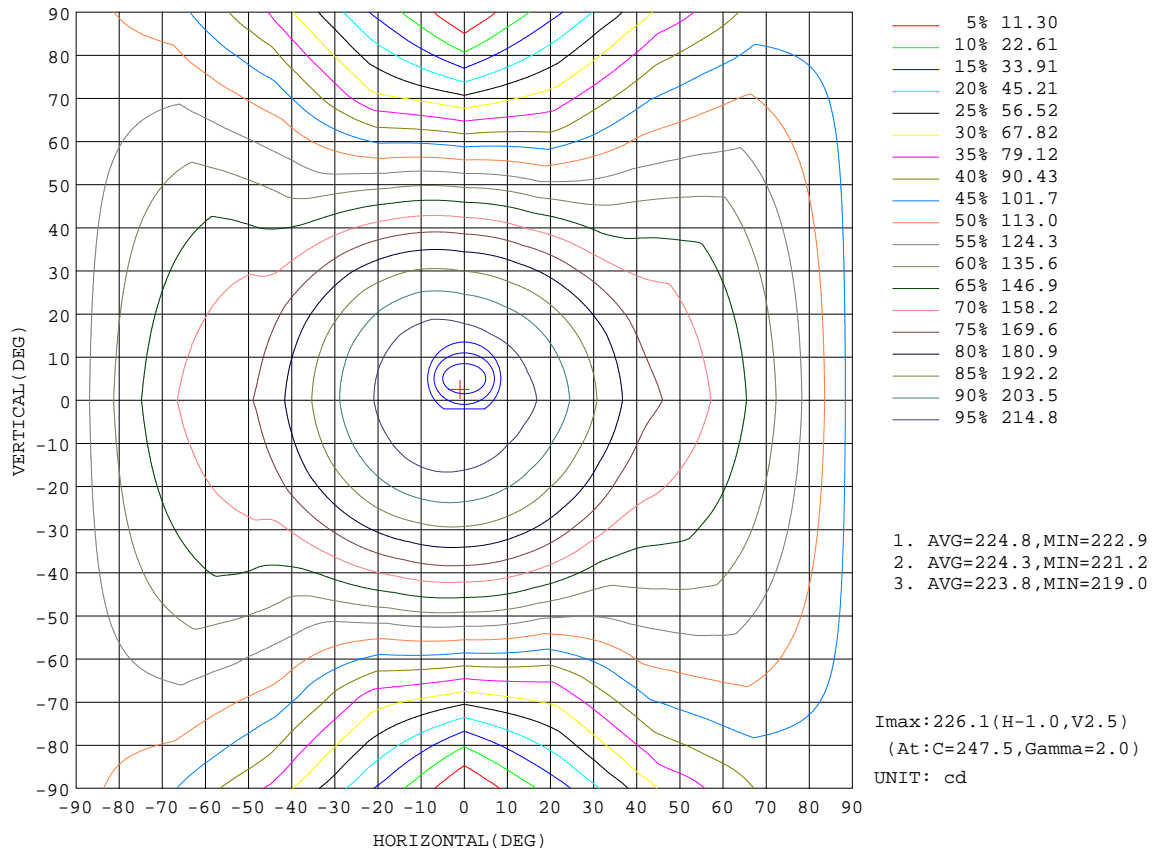
REFLECTANCE										
Ceiling	0.8	0.8	0.8	0.7	0.7	0.7	0.5	0.5	0.5	0
Walls	0.7	0.5	0.3	0.7	0.5	0.3	0.7	0.5	0.3	0
Working plane	0.2	0.2	0.2	0.2	0.2	0.2	0.2	0.2	0.2	0
ROOM INDEX	UTILIZATION FACTORS(PERCENT) $k(RI) \times RCR = 5$									
k = 0.60	50	38	30	49	37	30	48	37	30	23
0.80	59	46	38	58	46	38	56	45	37	30
1.00	67	54	46	65	53	45	62	55	44	36
1.25	74	61	53	72	60	52	68	58	51	42
1.50	79	67	58	77	65	57	73	63	56	46
2.00	86	75	67	84	73	66	79	70	64	53
2.50	91	80	72	88	79	71	83	75	69	58
3.00	94	85	78	91	83	76	86	79	73	62
4.00	99	91	85	96	89	83	90	84	79	67
5.00	102	95	89	99	93	87	93	88	83	71
ROOM INDEX	UF(total)									Direct
According to DIN EN 13032-2 2004			Suspended				SHRNOM = 1.25			

C Range: 0 - 360DEG
 C Interval: 22.5DEG
 Test Speed: HIGH
 Temperature:24.5DEG
 Operators:Seth
 Test Date:2016-09-18

γ Range: 0 - 180DEG
 γ Interval: 1.0DEG
 Test System:EVERFINE GO-R5000_V2 SYSTEM V2.0.352
 Humidity:65.7%
 Test Distance:26.000m [K=1.3361]
 Remarks:

ISOCANDELA DIAGRAM

Test:U:24.00V I:0.5850A P:14.04W PF:1.000 Freq:0Hz Lamp Flux:918.718x1 lm		
NAME: LED Linear Light	TYPE:LED	WEIGHT:N/A
SPEC.:N/A	DIM.:	SERIAL No.:N/A
MFR.: LEDWIDE LIGHTING CO., LTD	SUR.:	Shielding Angle:N/A

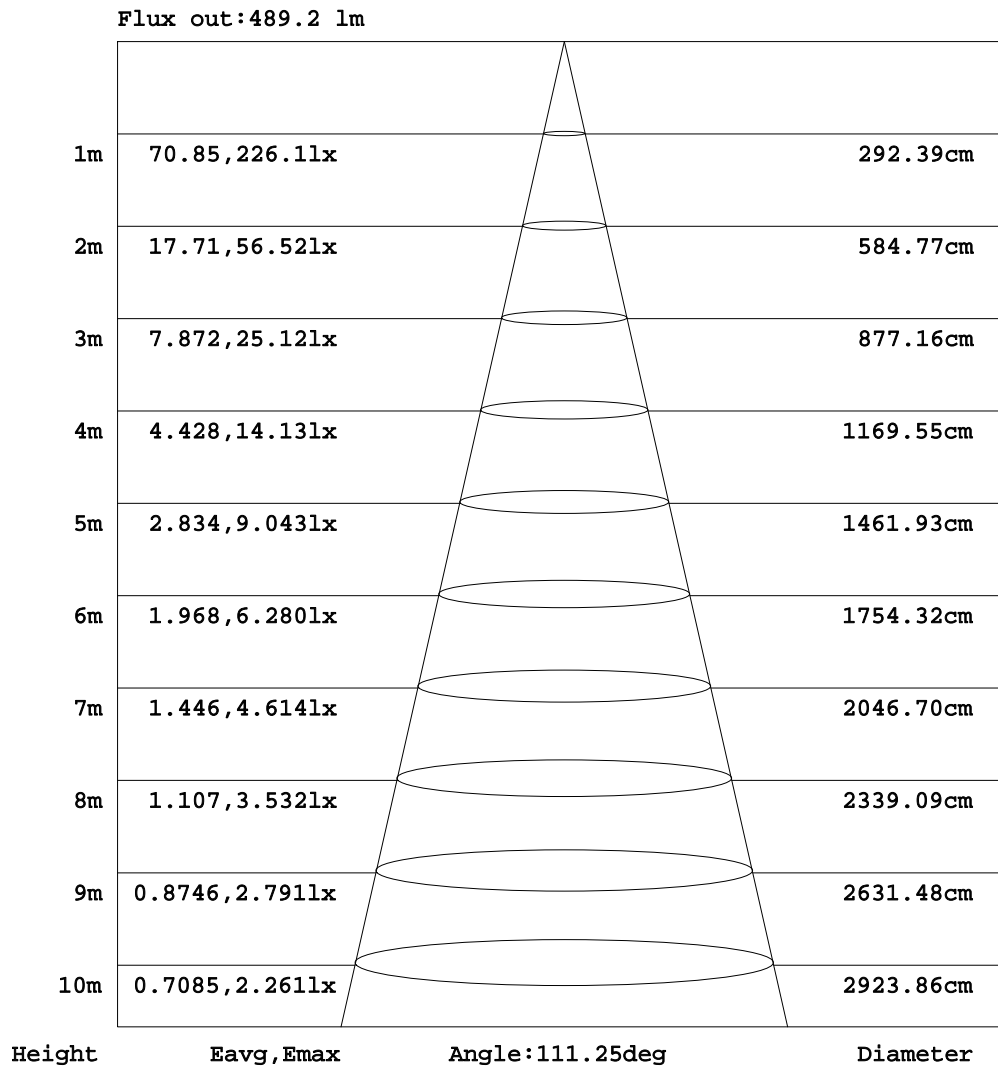


C Range: 0 - 360DEG
 C Interval: 22.5DEG
 Test Speed: HIGH
 Temperature: 24.5DEG
 Operators: Seth
 Test Date: 2016-09-18

γ Range: 0 - 180DEG
 γ Interval: 1.0DEG
 Test System: EVERFINE GO-R5000_V2 SYSTEM V2.0.352
 Humidity: 65.7%
 Test Distance: 26.000m [K=1.3361]
 Remarks:

AAI Figure

Test:U:24.00V I:0.5850A P:14.04W PF:1.000 Freq:0Hz Lamp Flux:918.718x1 lm		
NAME: LED Linear Light	TYPE:LED	WEIGHT:N/A
SPEC.:N/A	DIM.:	SERIAL No.:N/A
MFR.: LEDWIDE LIGHTING CO., LTD	SUR.:	Shielding Angle:N/A



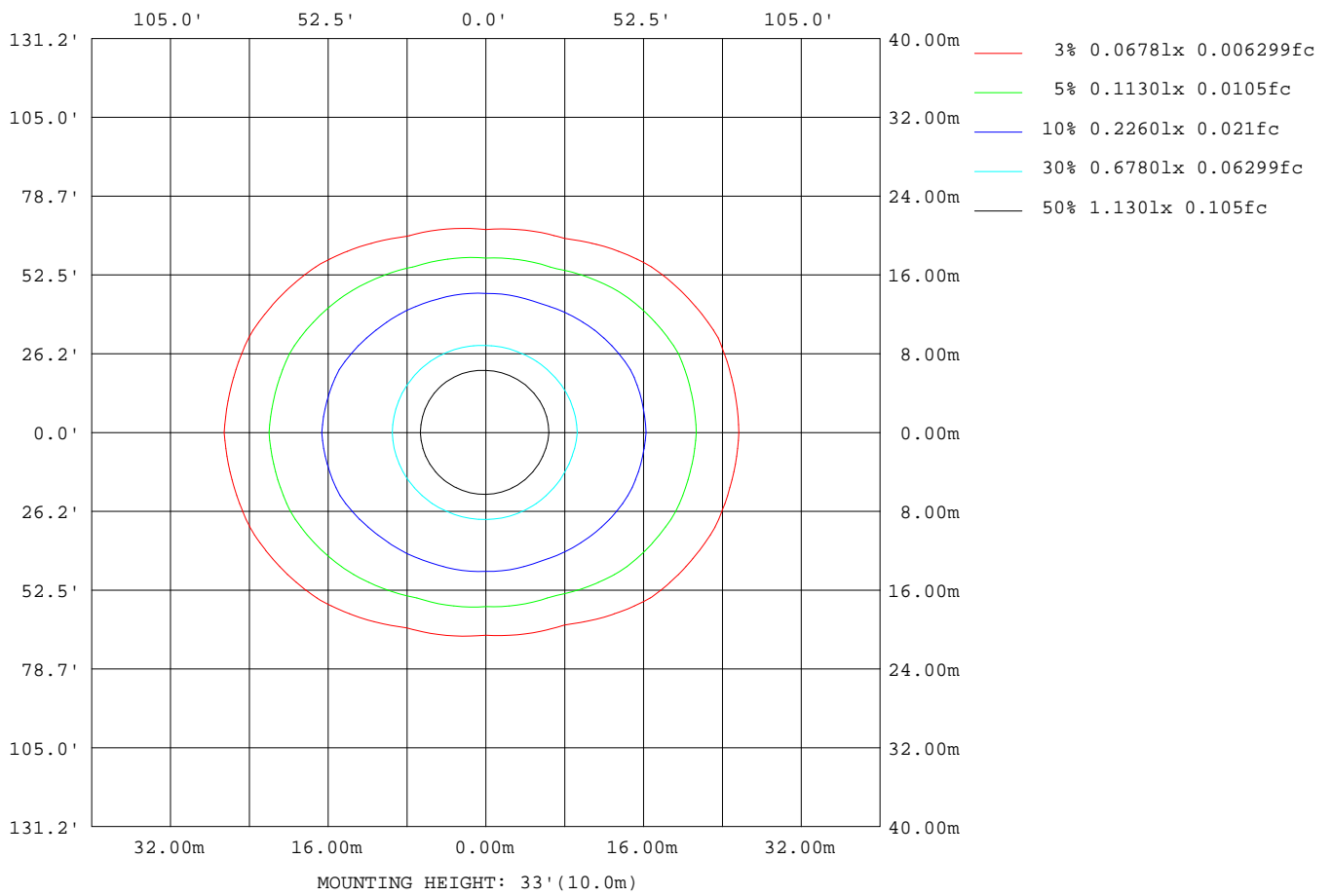
Note:The Curves indicate the illuminated area and the average illumination when the luminaire is at different distance.

C Range: 0 - 360DEG
 C Interval: 22.5DEG
 Test Speed: HIGH
 Temperature:24.5DEG
 Operators:Seth
 Test Date:2016-09-18

γ Range: 0 - 180DEG
 γ Interval: 1.0DEG
 Test System:EVERFINE GO-R5000_V2 SYSTEM V2.0.352
 Humidity:65.7%
 Test Distance:26.000m [K=1.3361]
 Remarks:

ISOLUX DIAGRAM

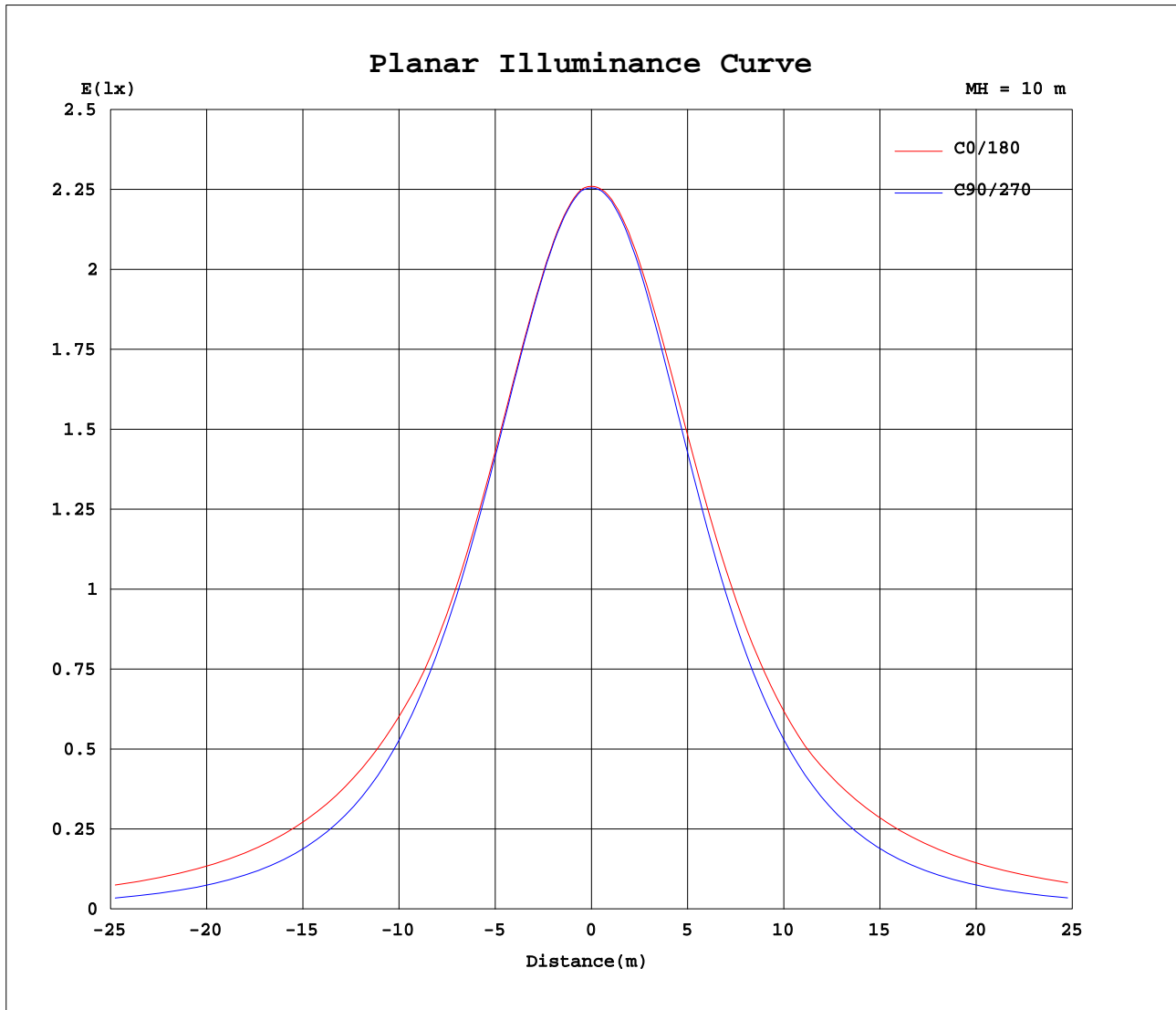
Test:U:24.00V I:0.5850A P:14.04W PF:1.000 Freq:0Hz Lamp Flux:918.718x1 lm		
NAME: LED Linear Light	TYPE:LED	WEIGHT:N/A
SPEC.:N/A	DIM.:	SERIAL No.:N/A
MFR.: LEDWIDE LIGHTING CO., LTD	SUR.:	Shielding Angle:N/A



C Range: 0 - 360DEG
 C Interval: 22.5DEG
 Test Speed: HIGH
 Temperature:24.5DEG
 Operators:Seth
 Test Date:2016-09-18

γ Range: 0 - 180DEG
 γ Interval: 1.0DEG
 Test System:EVERFINE GO-R5000_V2 SYSTEM V2.0.352
 Humidity:65.7%
 Test Distance:26.000m [K=1.3361]
 Remarks:

Planar Illuminance Curve



C Range: 0 - 360DEG
C Interval: 22.5DEG
Test Speed: HIGH
Temperature: 24.5DEG
Operators: Seth
Test Date: 2016-09-18

γ Range: 0 - 180DEG
 γ Interval: 1.0DEG
Test System: EVERFINE GO-R5000_V2 SYSTEM V2.0.352
Humidity: 65.7%
Test Distance: 26.000m [K=1.3361]
Remarks:

LUMINOUS DISTRIBUTION INTENSITY DATA

Test:U:24.00V I:0.5850A P:14.04W PF:1.000 Freq:0Hz Lamp Flux:918.718x1 lm		
NAME: LED Linear Light	TYPE:LED	WEIGHT:N/A
SPEC.:N/A	DIM.:	SERIAL No.:N/A
MFR.: LEDWIDE LIGHTING CO., LTD	SUR.:	Shielding Angle:N/A

Table--1

UNIT: cd

C(DEG) γ (DEG)	0	22.5	45	67.5	90	112.5	135	157.5	180	202.5	225	247.5	270	292.5	315	337.5			
0	226	225	225	226	226	226	226	225	226	225	225	226	226	226	226	225			
5	225	224	223	224	225	226	226	225	226	225	225	226	225	225	224	224			
10	222	220	219	220	221	223	224	224	224	224	224	224	223	222	221	221			
15	217	215	214	215	216	218	219	220	221	221	221	221	218	217	216	216			
20	210	208	207	208	209	212	213	214	216	216	216	215	211	210	210	210			
25	203	199	198	199	201	203	206	208	209	210	209	207	203	201	201	202			
30	194	189	188	189	191	193	196	199	202	201	200	197	192	190	191	192			
35	184	179	177	177	178	181	185	190	193	192	190	185	179	178	180	183			
40	175	169	165	164	165	167	173	180	184	182	178	171	165	164	167	173			
45	170	160	153	149	149	153	160	170	175	172	165	156	150	149	155	165			
50	166	156	141	134	133	137	148	161	169	162	152	140	133	133	144	161			
55	161	151	133	117	115	121	136	158	168	159	139	124	116	117	136	156			
60	155	145	126	101	96.4	105	128	154	164	155	129	107	97.0	102	128	150			
65	148	139	118	85.1	77.4	89.2	122	148	160	150	123	90.6	77.9	87.5	120	144			
70	140	132	111	72.5	58.3	75.0	115	142	154	144	116	75.4	59.0	76.5	111	136			
75	131	124	102	61.9	40.0	65.5	107	134	147	136	108	63.9	40.8	65.7	102	127			
80	121	114	92.2	51.9	23.7	56.2	98.3	125	138	127	98.8	54.4	24.5	55.0	92.9	118			
85	110	103	81.0	41.4	10.6	46.7	89.0	115	128	117	89.0	44.8	11.3	44.4	82.5	107			
90	97.5	90.8	68.4	30.4	0.46	36.3	77.3	103	117	107	78.4	34.6	0.80	33.3	70.2	94.6			
95	12.1	2.63	1.18	3.44	0.00	4.90	0.69	0.75	1.08	0.95	0.76	4.69	0.14	4.86	0.74	3.27			
100	0.81	2.41	23.3	4.00	0.00	5.66	32.8	61.2	46.1	47.7	30.0	4.96	0.27	5.05	26.9	2.21			
105	54.8	45.5	24.2	2.70	0.00	5.86	33.6	57.3	73.7	59.0	32.1	4.47	0.27	3.22	25.4	47.6			
110	43.3	36.1	17.0	0.55	0.00	3.04	27.1	48.8	62.3	51.1	26.0	1.64	0.27	0.20	18.2	38.5			
115	31.2	25.3	9.54	0.55	0.00	0.41	19.2	38.4	50.4	40.5	18.4	0.21	0.27	0.13	10.5	27.1			
120	20.1	15.2	2.69	0.41	0.00	0.34	11.3	28.0	38.2	29.5	10.6	0.21	0.27	0.13	3.54	16.6			
125	10.3	6.37	0.35	0.34	0.00	0.34	4.45	17.8	26.1	18.8	3.59	0.21	0.27	0.13	0.27	7.23			
130	1.88	0.34	0.34	0.28	0.00	0.34	0.27	8.92	14.9	9.24	0.14	0.21	0.27	0.13	0.27	0.20			
135	0.27	0.20	0.21	0.28	0.00	0.34	0.20	1.49	5.50	1.25	0.14	0.21	0.27	0.13	0.27	0.20			
140	0.27	0.20	0.21	0.28	0.00	0.34	0.20	0.20	0.27	0.20	0.14	0.21	0.27	0.13	0.27	0.20			
145	0.20	0.20	0.21	0.28	0.00	0.34	0.20	0.20	0.27	0.20	0.14	0.21	0.27	0.13	0.27	0.20			
150	0.20	0.20	0.21	0.28	0.00	0.34	0.20	0.20	0.27	0.20	0.28	0.21	0.27	0.13	0.27	0.20			
155	0.20	0.20	0.21	0.28	0.00	0.34	0.20	0.20	0.27	0.20	0.21	0.21	0.27	0.13	0.34	0.20			
160	0.20	0.20	0.21	0.28	0.00	0.34	0.20	0.20	0.27	0.20	0.21	0.21	0.27	0.13	0.34	0.20			
165	0.20	0.20	0.21	0.28	0.00	0.34	0.20	0.20	0.27	0.20	0.21	0.21	0.27	0.13	0.34	0.20			
170	0.20	0.20	0.21	0.28	0.00	0.34	0.20	0.20	0.27	0.20	0.21	0.21	0.27	0.13	0.34	0.20			
175	0.20	0.20	0.21	0.28	0.00	0.34	0.20	0.20	0.27	0.20	0.21	0.21	0.27	0.00	0.34	0.20			
180	0.20	0.20	0.21	0.28	0.00	0.34	0.20	0.20	0.27	0.20	0.21	0.21	0.27	0.00	0.34	0.20			

C Range: 0 - 360DEG
 C Interval: 22.5DEG
 Test Speed: HIGH
 Temperature:24.5DEG
 Operators:Seth
 Test Date:2016-09-18

γ Range: 0 - 180DEG
 γ Interval: 1.0DEG
 Test System:EVERFINE GO-R5000_V2 SYSTEM V2.0.352
 Humidity:65.7%
 Test Distance:26.000m [K=1.3361]
 Remarks: