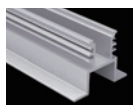
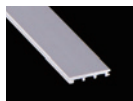


LW-AF3 ^{NEW}

ACCESSORIES :



Aluminum Profile
Code: AF3



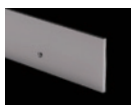
Aluminium PCB tray
Code: AF2-tray



Aluminum Endcap
(without hole)
Code: AF3-Cap



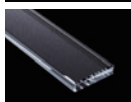
Soft Endcap
Code: AF2-SCap
Code: AF2-SCap-H



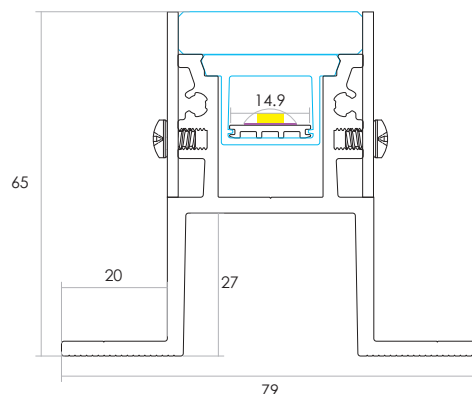
Stainless steel side bar
Code: AF3-SB

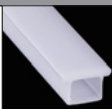


Waterproof Cable Grommet
Code: AF3-WP



Glass Diffuser
Code: AF3-Glass

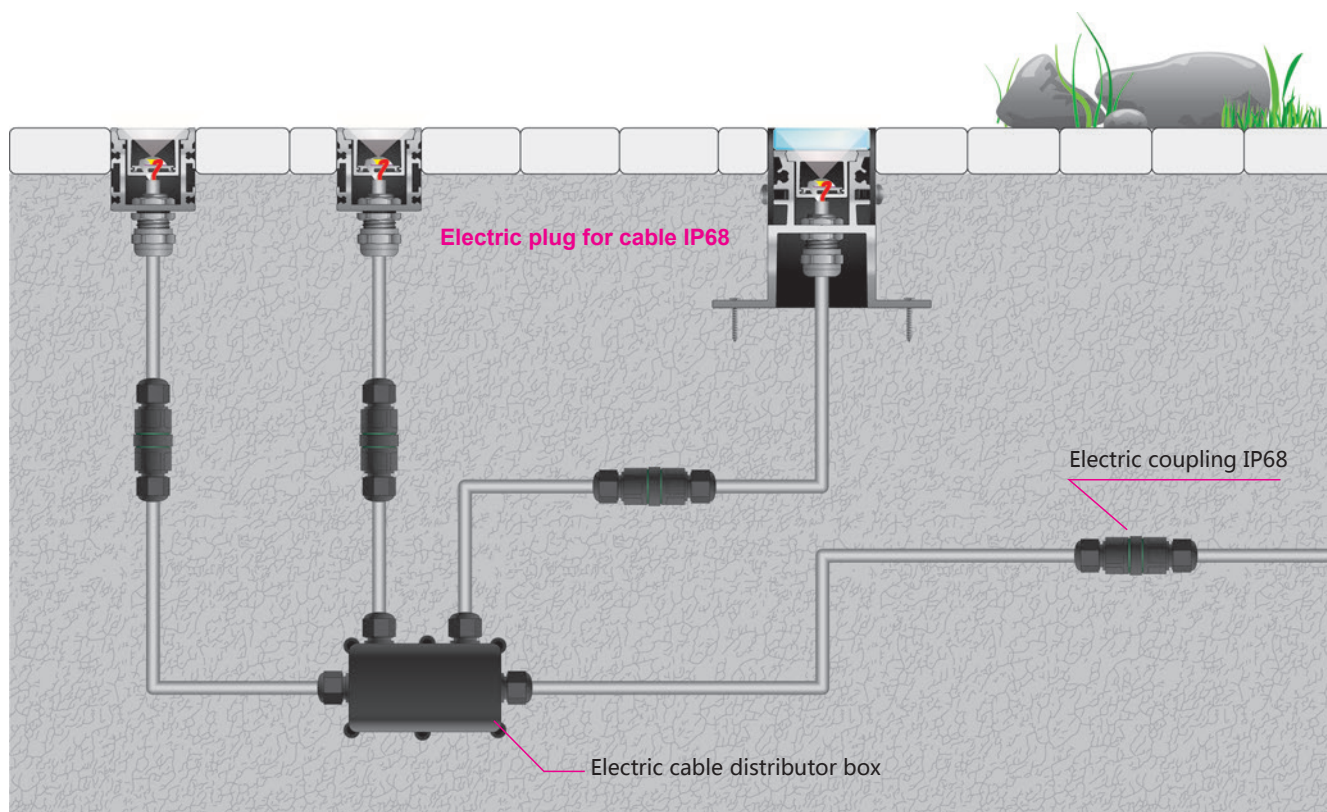


Optional Diffuser(PC)					
/					
Dimensions(mm)	Max strip width	Opal	Milky	Frosted	Clear
30*30	15.3mm	✓	/	/	/
Code		AF2-O	/	/	/
Light Transmittance		40%	/	/	/

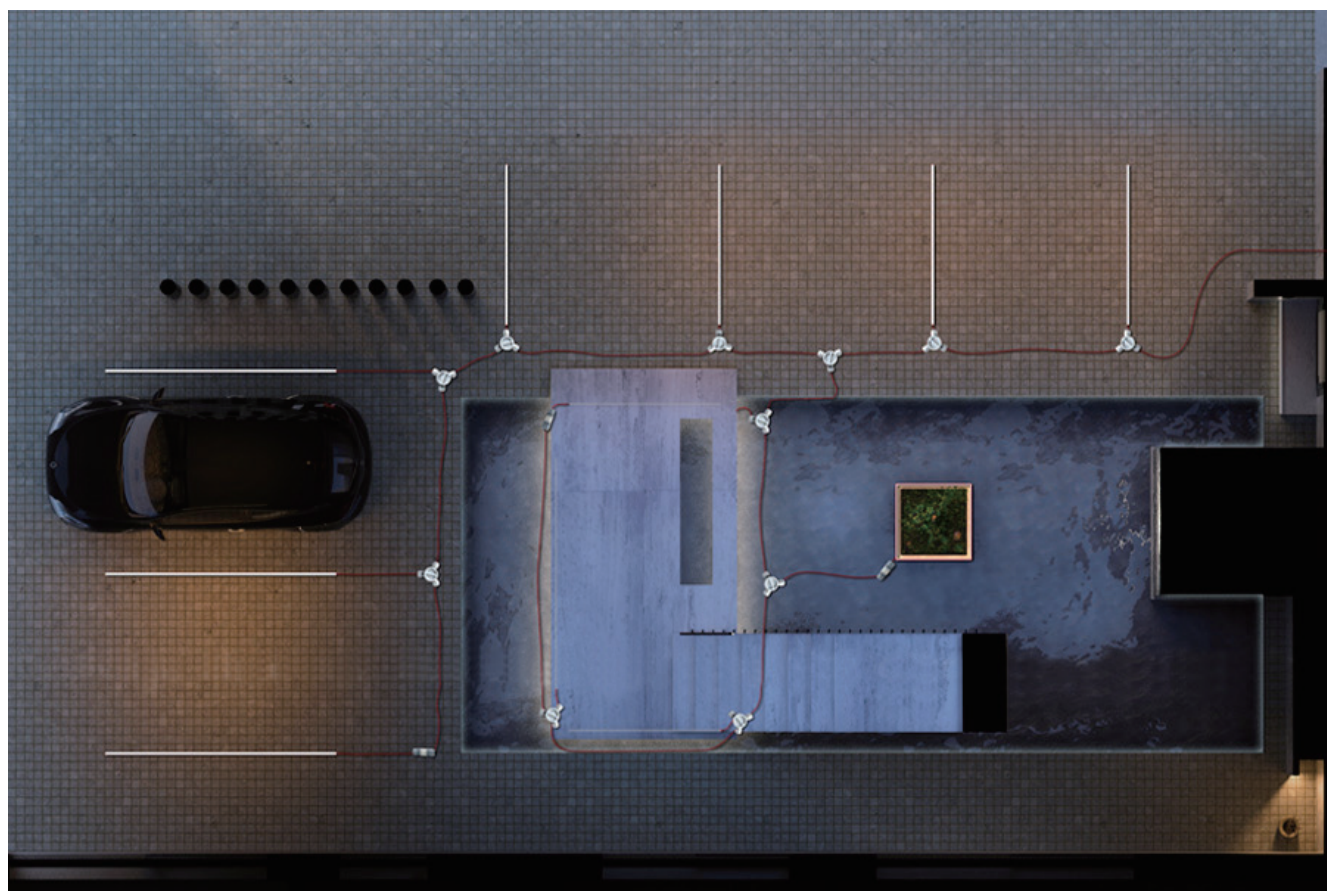
**IP68 STAINLESS STEEL PROFILE
FOR FLOOR AND PAVING
LIGHTING**

< 19.2W/m

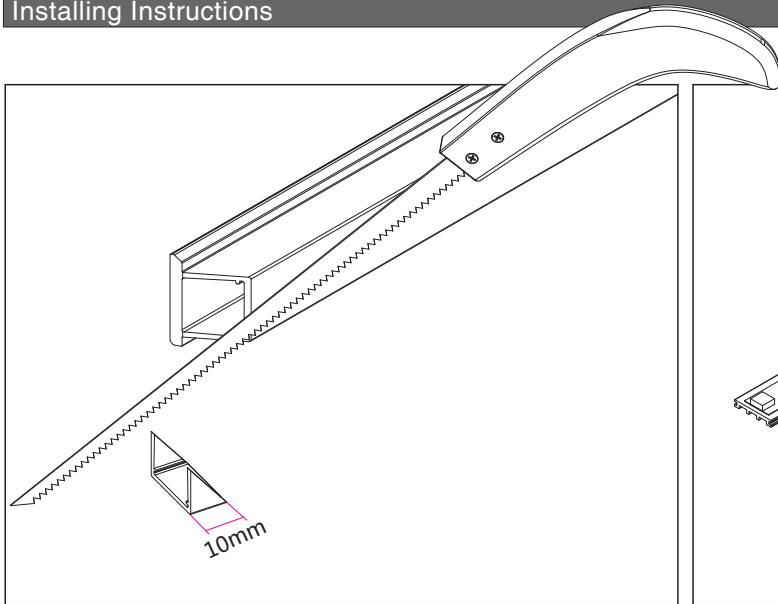
Stocked length availability:2m,2.5m.
Customized length below 6m upon your request.



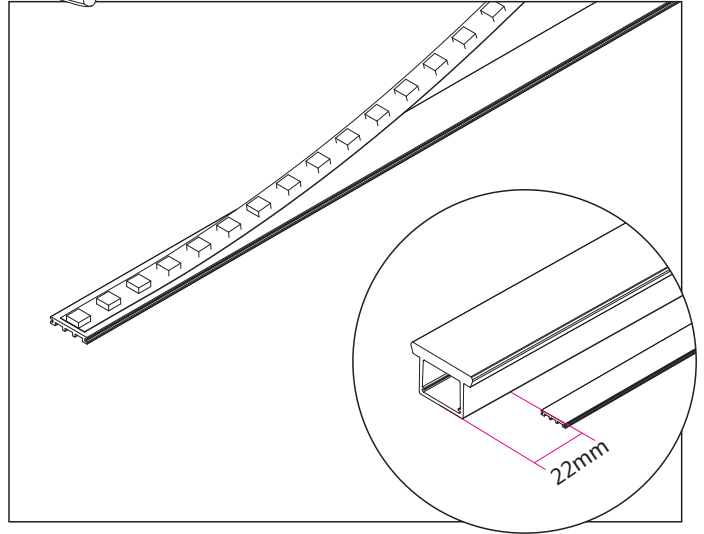
⚙ AF2 & AF3 Schematic diagram for linking the cable - 01



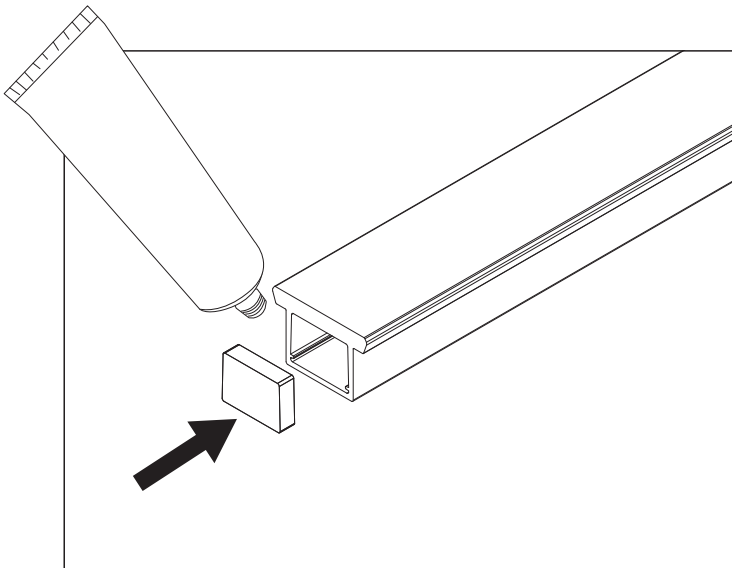
⚙ AF2 & AF3 Schematic diagram for linking the cable - 02



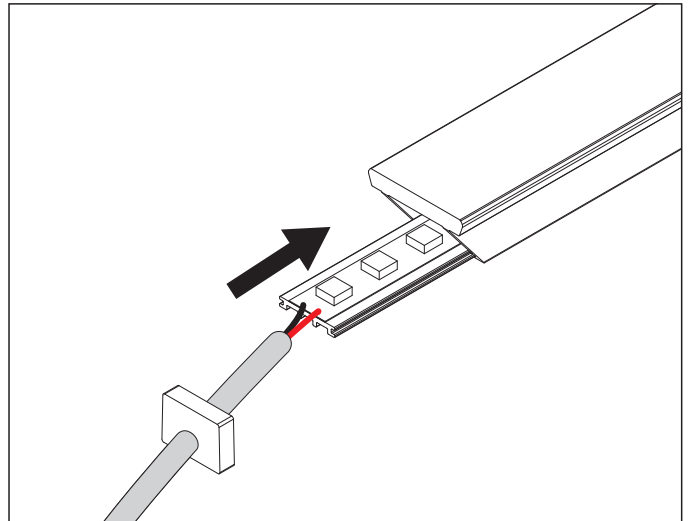
1. Cut diffuser at an angle to allow cable access from LED strips



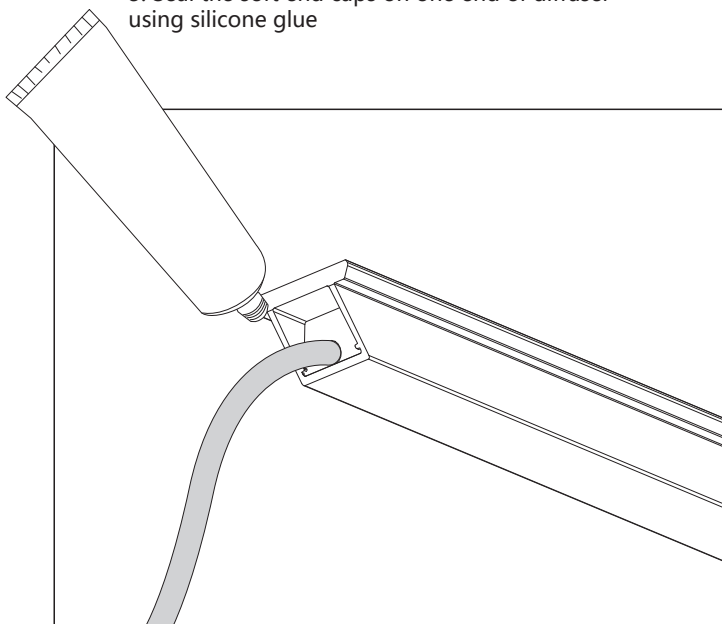
2. Assemble LED strips to base tray
(The led base tray was 22mm shorter than the diffuser for wire space)



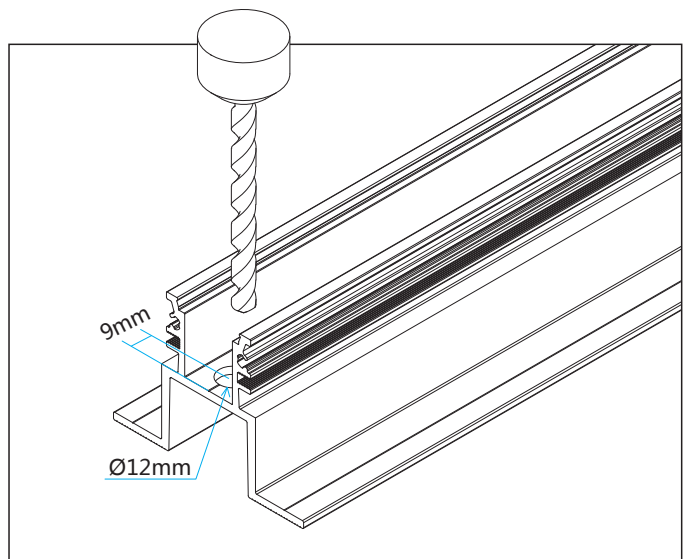
3. Seal the soft end caps on one end of diffuser using silicone glue



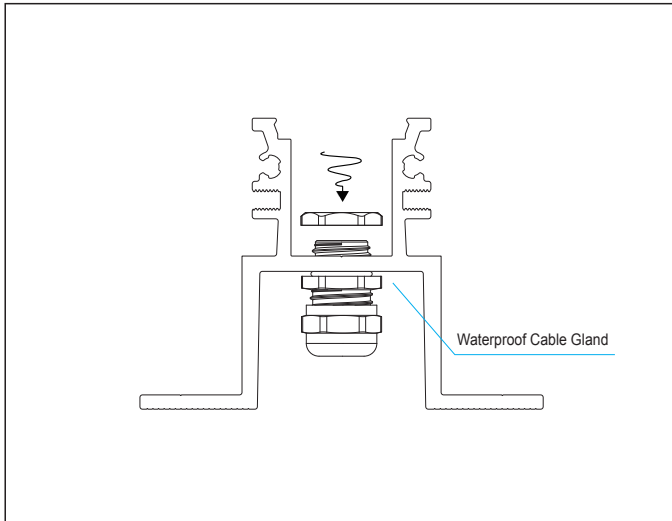
4. Slide the base tray with LED strips into the open end of the diffuser



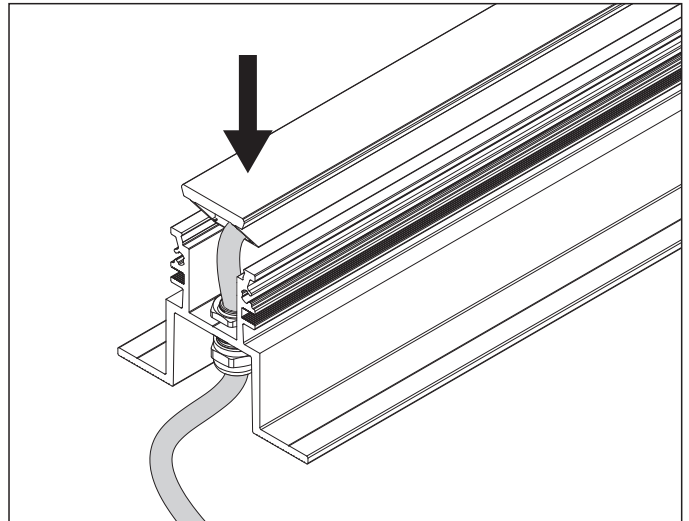
5. Put silicone glue to seal ends well to reach IP67



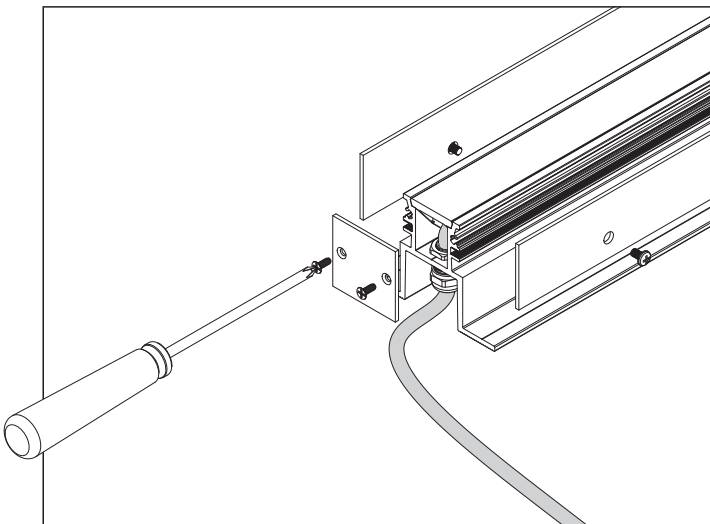
6. Drill cable holes in profiles for cable entry



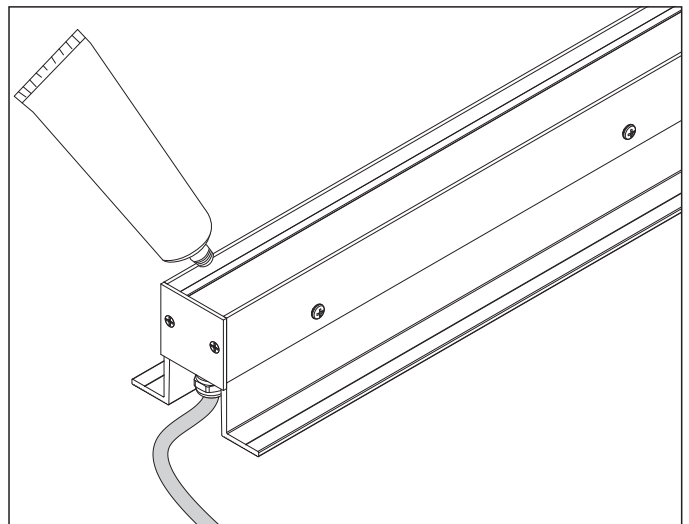
7. Attach the waterproof cable gland in cable hole



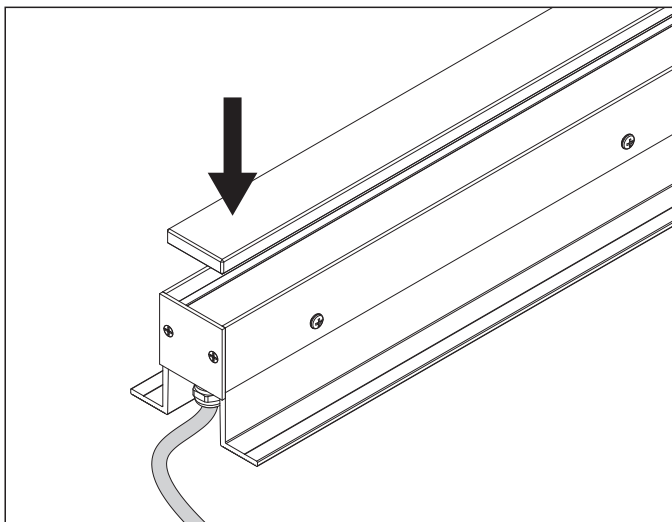
8. After the silicone glue has fully dried, attach the diffuser into the profile, threading the cable through the gland



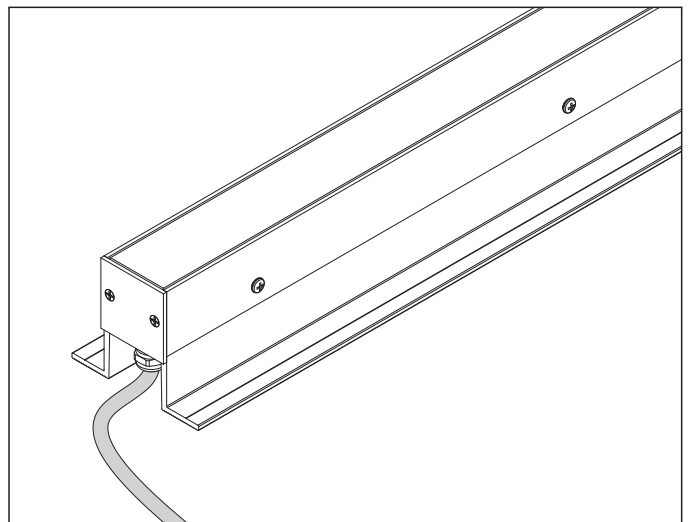
9. Screw on the profile enclosure panels and end caps



10. Apply waterproof silicone glue along the edges of the diffuser



11. Press down the glass diffuser to adhere to the surface



12. Allow glue to dry completely prior to installation into ground

