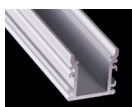


## NEW PRODUCT

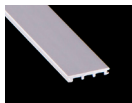


### Accessory

ITEM NO.: **LW-AF2**



Aluminum Profile  
Code: AF2



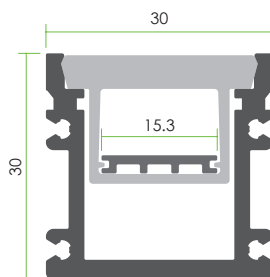
Aluminium PCB tray  
Code: AF2-tray



Aluminum Endcap  
(with/without hole)  
Code: AF2-Cap  
Code: AF2-Cap-H



Soft Endcap  
Code: AF2-SCap  
Code: AF2-SCap-H



< 19.2W/m

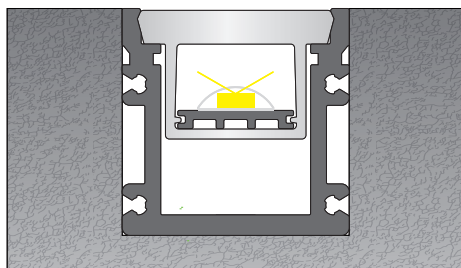
### Optional Diffuser(PC)

/					
		Opal	Milky	Frosted	Clear
Dimensions(mm)	Max strip width	Opal	Milky	Frosted	Clear
30*30	15.3mm	✓	/	/	/
Code		AF2-O	/	/	/
Light Transmittance		40%	/	/	/

Stocked length availability: 2m, 2.5m. Customized length below 6m upon your request.

[www.ledwide.com](http://www.ledwide.com)

## NEW PRODUCT INSTALLATIONS



- Floor Recessed
- For AF2

