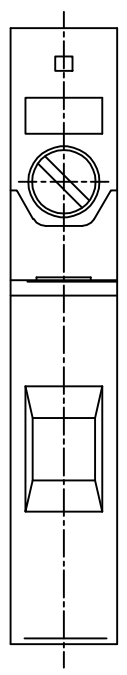
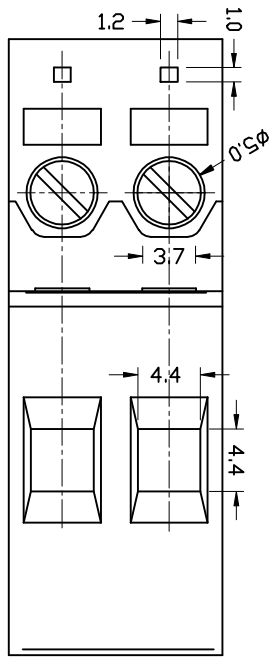


300V 20A 20-10AWG 4.0mm²
 Poles: 1P/2P
 Pitch: 7.5mm (.295")

Materials

Housing: PA66(UL 94V-0)
 Contact: Brass, Tin Plated
 Wire Cage: Brass, Nickel Plated
 Screw: M3.5, Steel, Cr3+ Zinc Plated
 Torque: 0.8N.m



序号/Serial No. 更改记录/Revision info 签名/Signature 日期/Date

设计/Designed by	绘图/Drawn by	审核/Checked by	批准/Approved by	备注/Remarks
新莱亚电子 XINLEIYI ELECTRONIC CO., LTD		图名/Title XY260	文件编号/Title No. 	页序/Sheet
未注公差 General Tolerances 未注 公差 未注 公差 未注 公差 未注 公差				