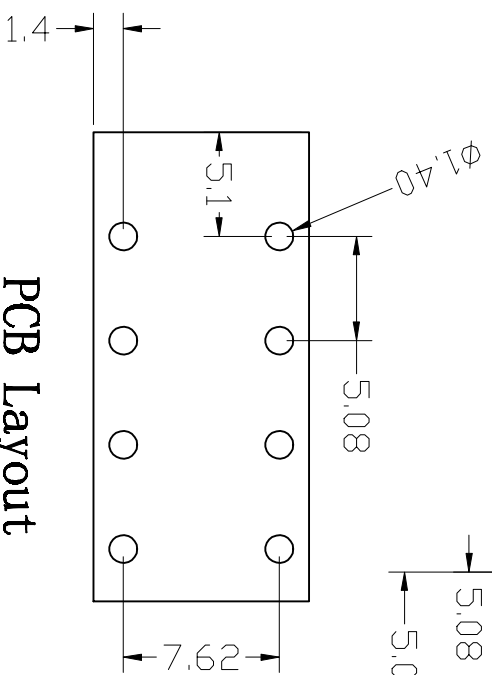


300V 10A 22-16AWG 1.5mm<sup>2</sup>  
 Poles: 1P-XXP  
 Pitch: 5.08mm (.200")

**Materials**

Housing: PA66 (UL 94V-0)  
 Clamping: Stainless steel  
 Solder Pin: Brass, Tin Plated



PCB Layout

序号/Rev. No.	更改记录/Revision info	签名/Signature	日期/Date
设计/Designed by		绘图/Drawing by	审核/Checked by
批准/Approved by		图名/Title	
General Tolerance		文件编号/Title No.	
±0.2	±0.1	XY122V-5.08	
±0.05	±0.01	页序/Sheet	
未注公差		备注/Remark	
±0.5		单位/Unit(s):	
±0.1		MM	
±0.05			
±0.01			



XINLIYA ELECTRONIC CO., LTD