

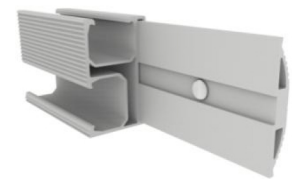
Rail Connector Series



MG-RRC-CA-01



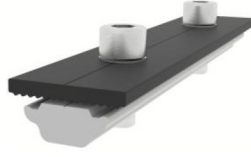
MG-RRC-BA-01



Assembled Diagram



MG-RRC-CA-02



MG-RRC-BA-02



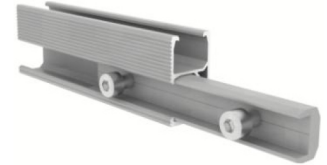
Assembled Diagram



MG-RRC-CA-04



MG-RRC-BA-04



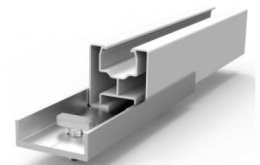
Assembled Diagram



MG-RRC-CA-05



MG-RRC-BA-05



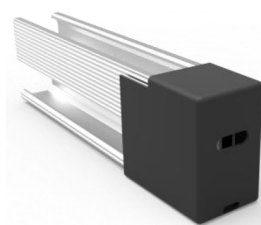
Assembled Diagram

Rail End Cap

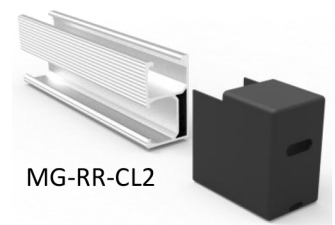
1. The material is PE, which has good anti-aging performance; it is suitable with MG-RR-CL2 rail.



MG-RR-EC-02



Assembled Diagram

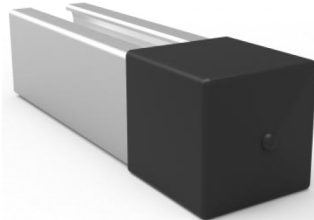


MG-RR-CL2

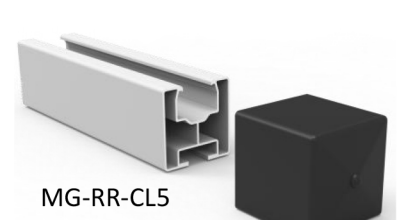
2. The cap adopting high quality EPDM material, it can work with MG-RR-CL5 rail and it also can fit with all type 40x40mm size rail in the market.



MG-RR-EC-05



Assembled Diagram



MG-RR-CL5