

Solar Water Drain Clip



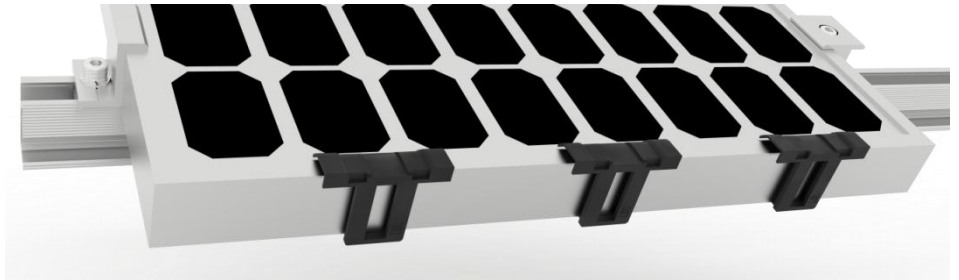
The Solar water drain clip is a device that is plugged to the solar module to prevent the accumulation of dust and soiling. Ideal for preventing the dirt pattern that gets stuck in the solar panel frame, It is suitable for 30mm, 35mm and 40mm thickness solar panel.

If the solar panel already has sludge, it must be cleaned before installing this product. This product only reduces the generation of new sludge belt

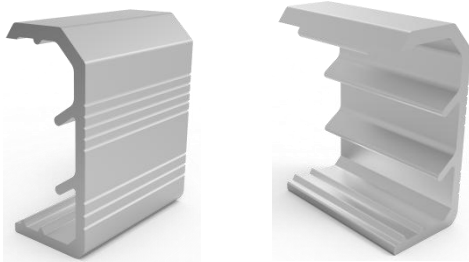
1. Plastic Material



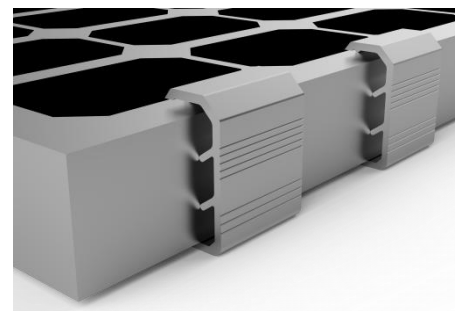
MG-WDC-01-F30/35/40



2. Aluminum Material, Type A



MG-WDC-02-F30/F35/F40



3. Aluminum Material, Type B



MG-WDC-03-F30/F35/F40



4. SUS 304 Material



MG-WDC-04-F30/F35/F40

