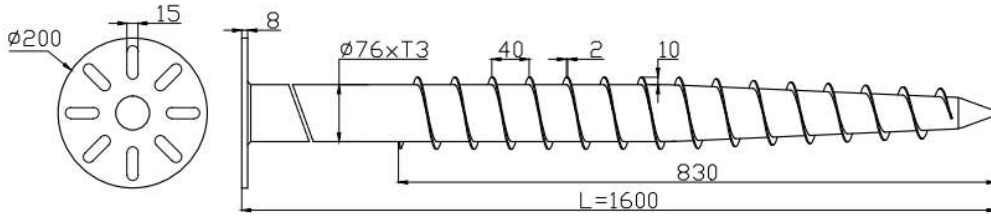


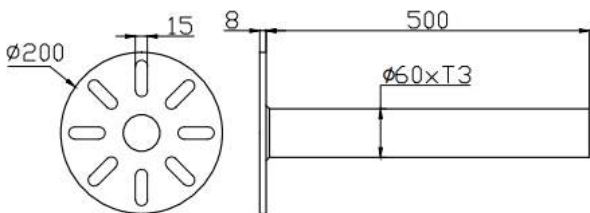
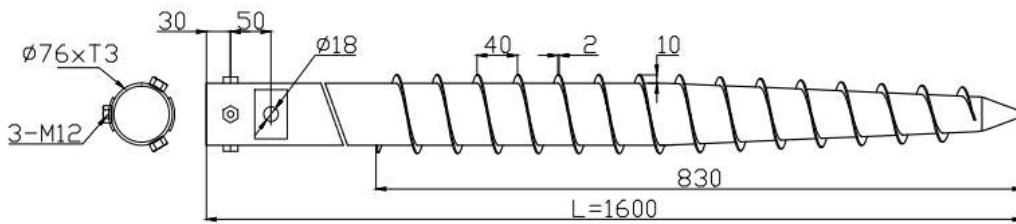
# Screw Pile

Material: Hot-galvanized Steel Q235  
High Class hot-galvanized 80u~120u

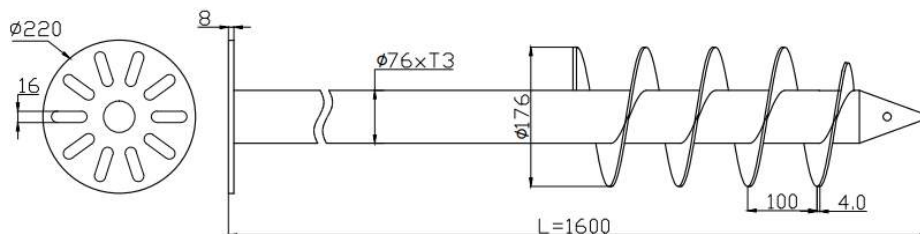
## Common Use Screw Pile-----MG-SP-F76-T3-L



## Adjustable Screw Pile: MG-ASP-F76-T3.0-L1600

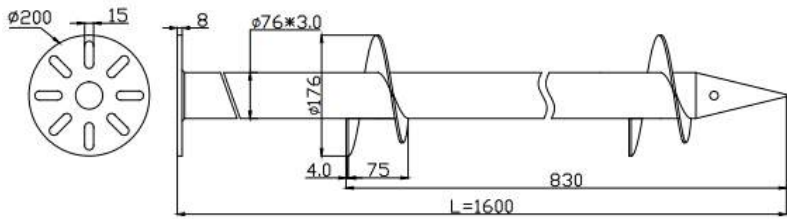


## Four Blades Screw Pile: MG-FSP-F76-T3.0-L1600

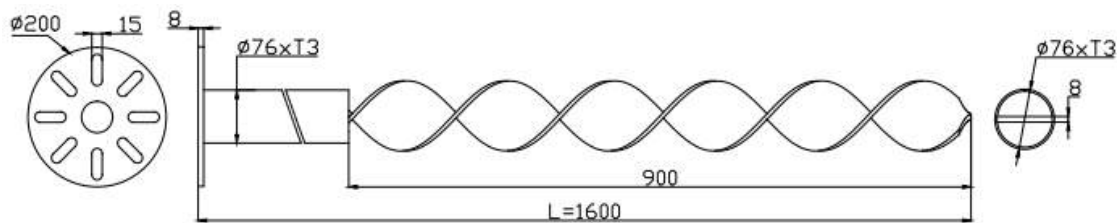


# Screw Pile

## Two Blades Screw Pile: MG-TSP-F76-T3.0-L1600



## Ribbon Screw Pile: MG-RSP-F76-T3.0-L1600



## Screw Pile Machine

**Feature:** Simple and easy to install the screw pile



## Production Process

