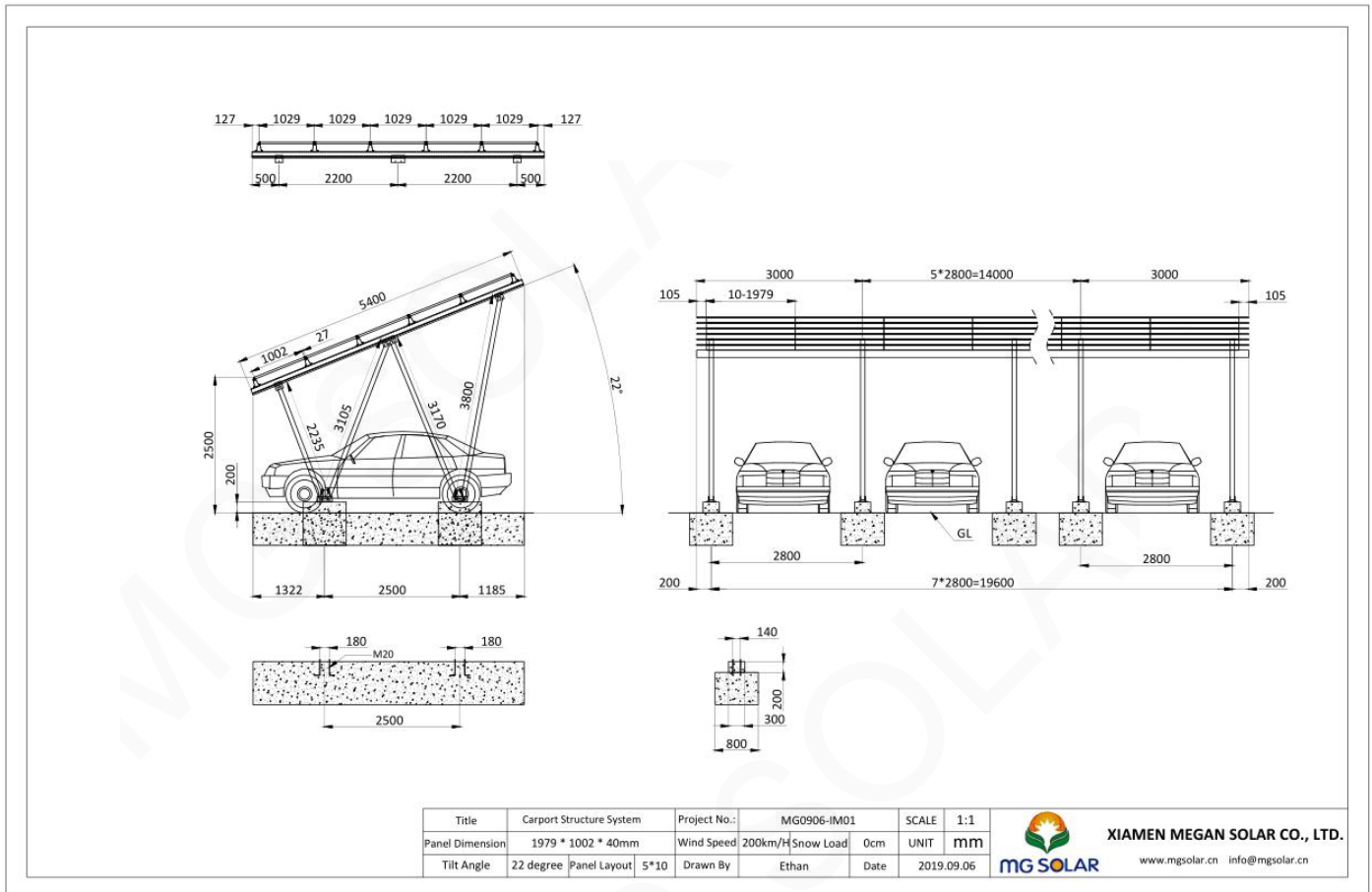


Carport Structure System Installation Manual



1. Before Installation

1.1. Engineering drawing



1.2 Tools For Installation

Cordless drill



Drill Sleeve(M8~M12)



Torque Wrench M8~M12



Socket Spanner(M8/M14)



Rule



Spirit level



8mm Allen key



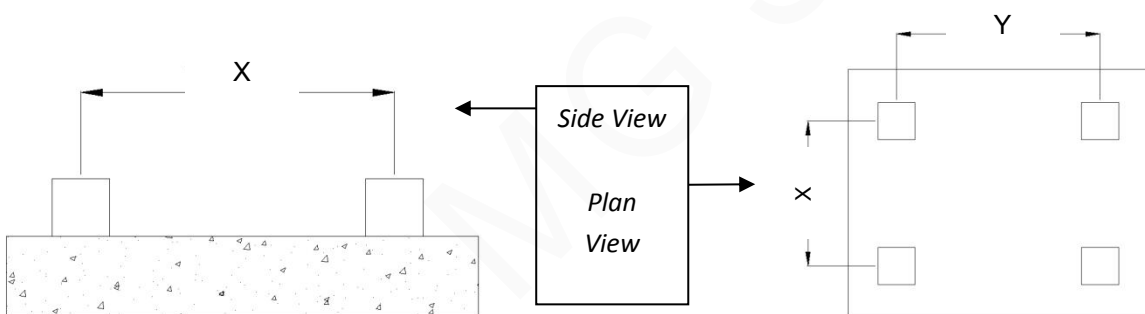
1.3 Component List

					
MG-CS-CR	MG-CS-MB	MG-CS-IS	MG-CS-BB-02	MG-CS-BC-01	MG-CS-BC-02
					
MG-CS-CRS	MG-CS-CRC-50	MG-AGM-MC-F25	MG-AGM-EC-F25		

2. Installation Guide

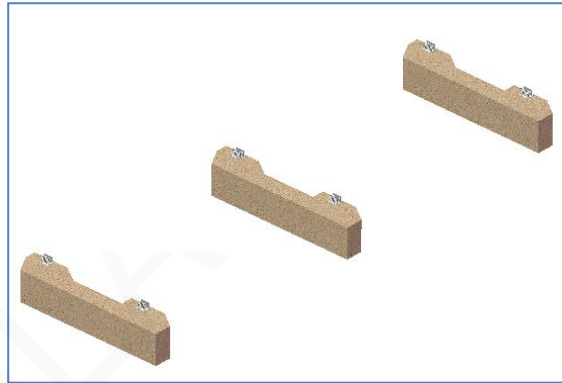
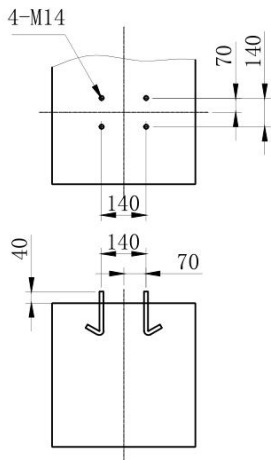
2.1 Positioning the ground screw foundation

According to the engineering drawing, the distance between base location is as follows:



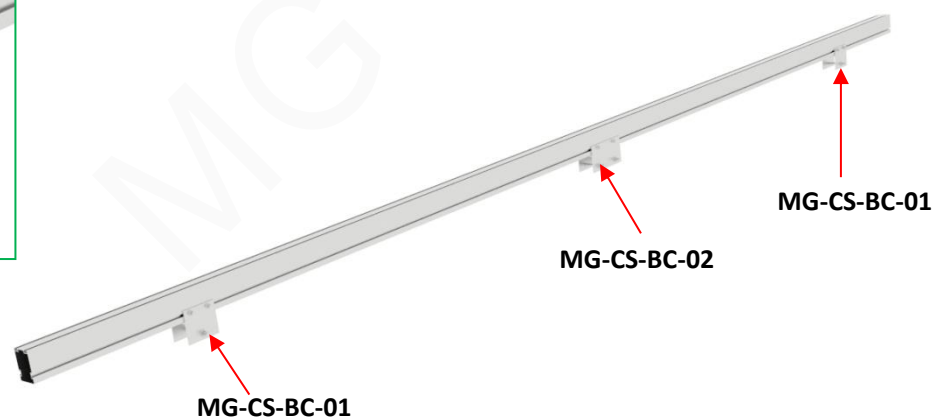
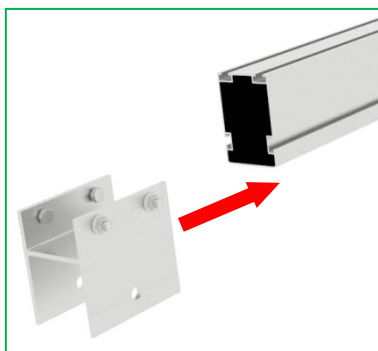
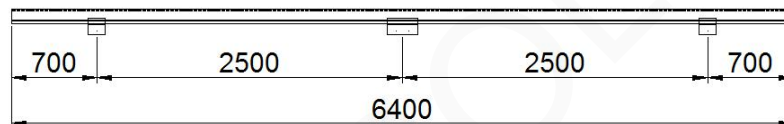
On the left side picture is screw pile position side view, distance X we called S/N span. Spiral pile into the underground shall ensure that at least 1400 mm, flange height should be consistent.

On the right side picture is ground screw position Plan view, distance Y is we called E/W span. Here, Y=5300mm.

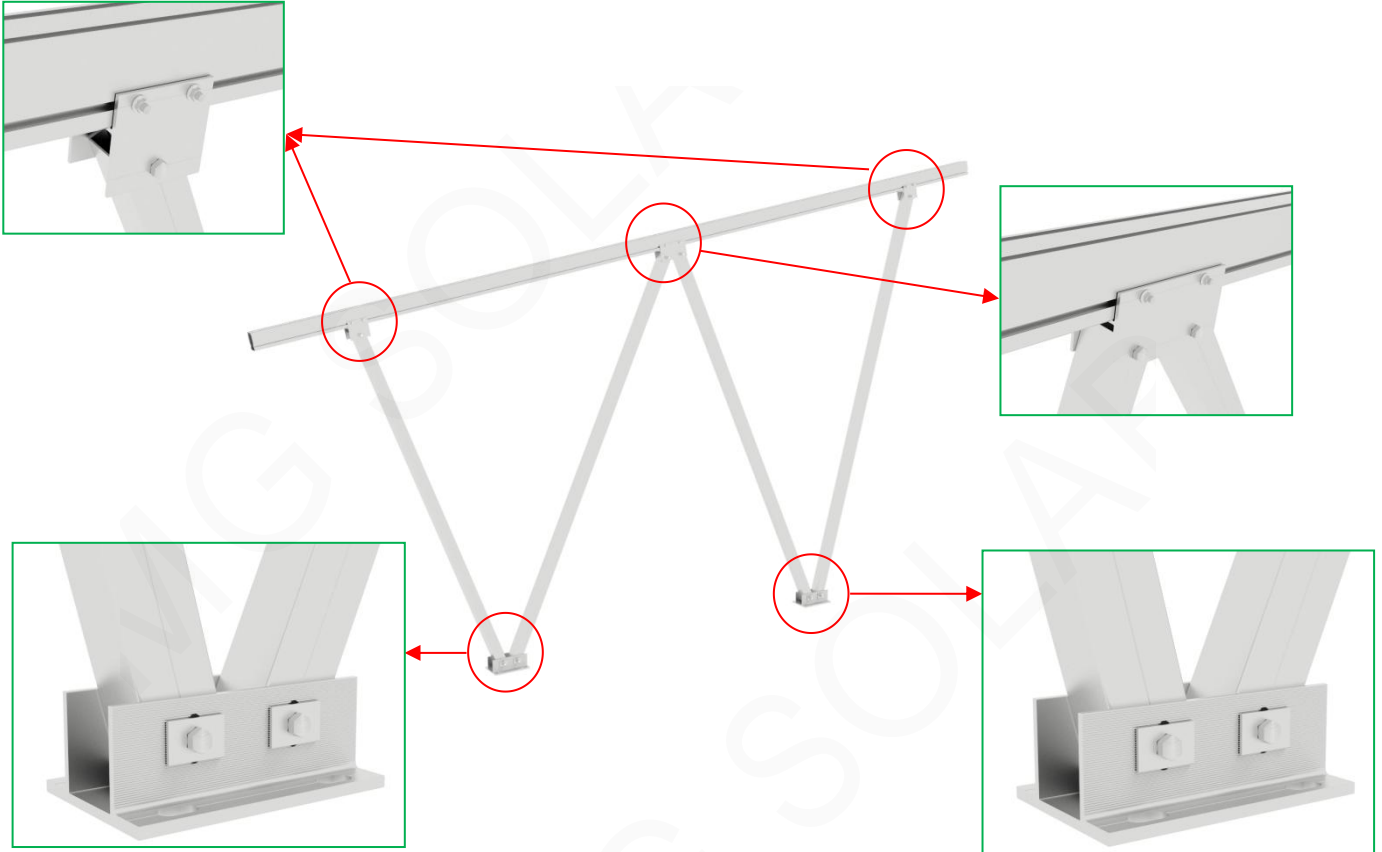


2.2 Pre-assembled Structure Installation Guide

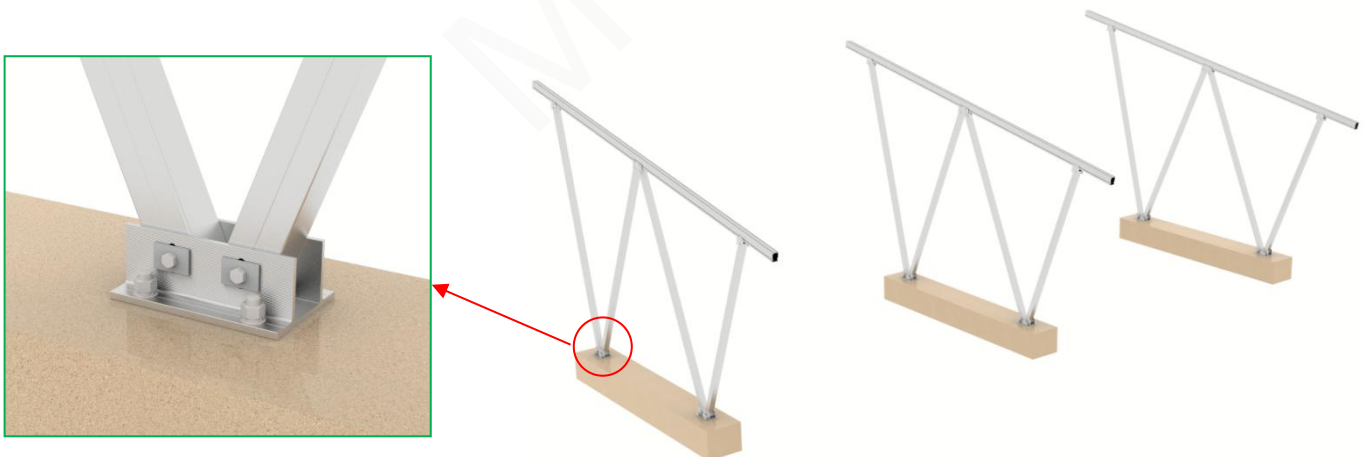
According to the drawing, fix the **H Beam Connector Kit (MG-CS-BC-01 & MG-CS-BC-02)** on the **Main Beam (MG-CS-MB)**, please see below pictures:



As the drawing, using **M14*120mm screw** to fix 4 pcs one side of **support pole (MG-CS-IS)** on the **H Beam Connector Kit** and using **M14*140mm screw** to fix another side of **support pole (MG-CS-IS)** on the **bottom base (MG-CS-BB-02)**.
Please see below:



Then using **M20*60 mm screw** fix the **bottom base (MG-CS-BB-02)** on the flange plate of ground screw pile.

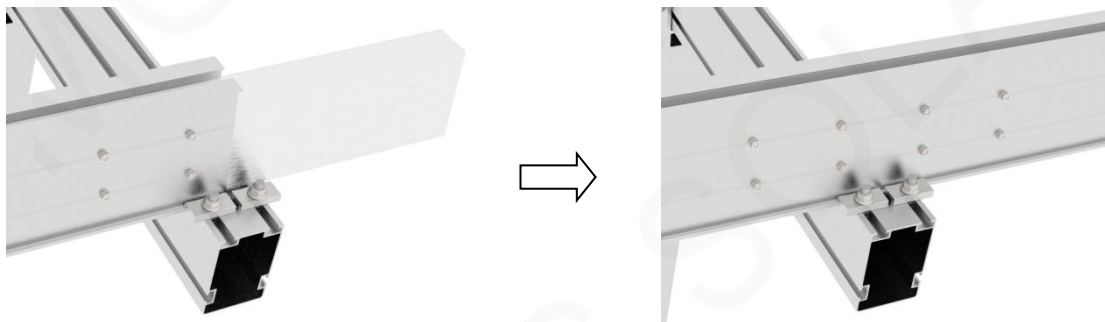


2.3 Carport Rail Installation

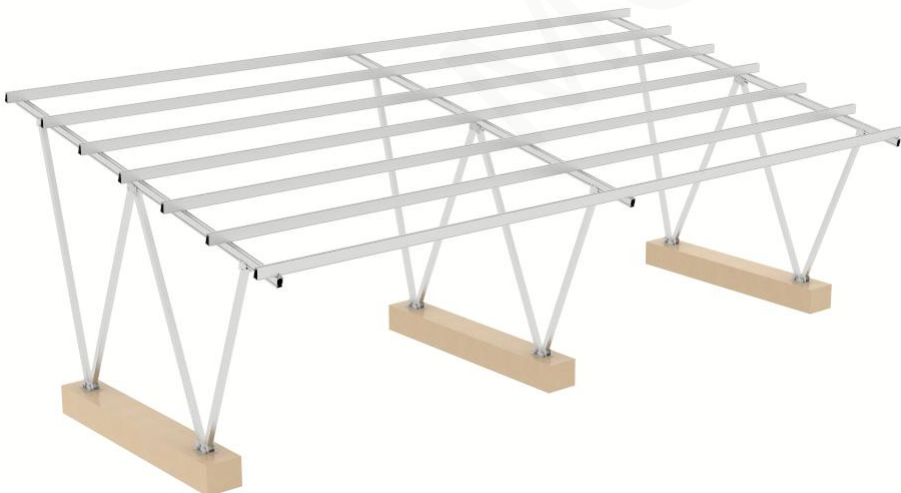
According to the drawing, put the **Carport Rail (MG-CS-CR)** on the right position of **Main Beam (MG-CS-MB)** and use **Carport Rail Clamp (MG-CS-CRC-50)** to fix it in the main beam, please see below pictures:



When the length of Carport Rail is not enough, we can use **carport rail splice kit (MG-CS-CRS)** to connect them to get longer rail. Using **M6.3*25mm self-tapping screw** to fix the rail splice kit on the rail. Please see below pictures:

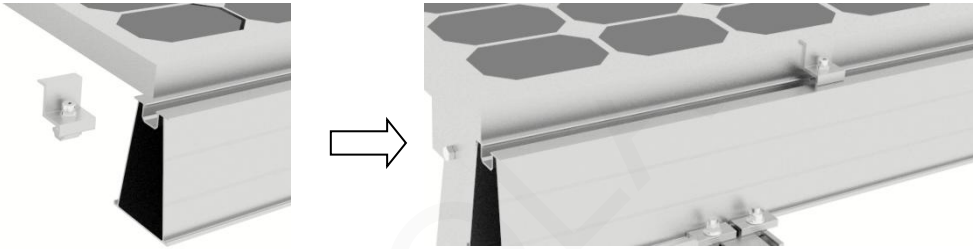


Finished the carport rail installation.

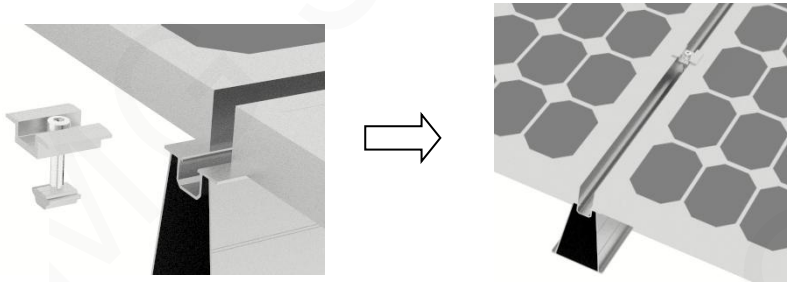


2.4 Solar Panel Installation

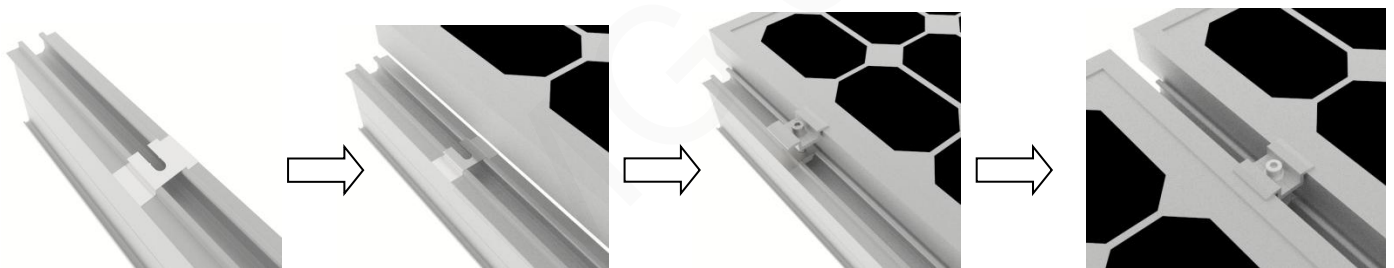
2.4.1 Using End Clamp to fix solar panel



2.4.2 Using Mid Clamp to fix solar panel



2.5 Grounding Clip Installation



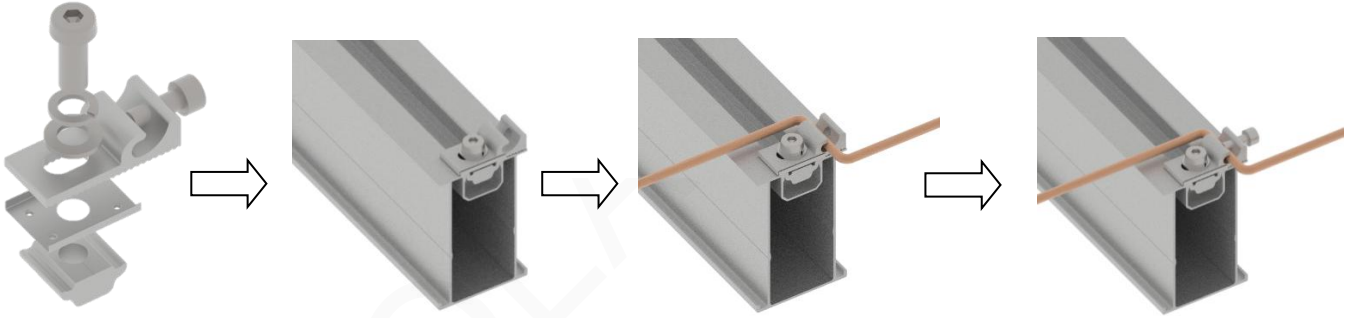
Put grounding clip on the grounding rail

Put solar panel on the one side of grounding clip

Mid clamp installation step same as 2.62

Put solar panel on the other side of grounding clip, then locked it.

2.6 Grounding Lug Installation



2.7 Finished Installation

