

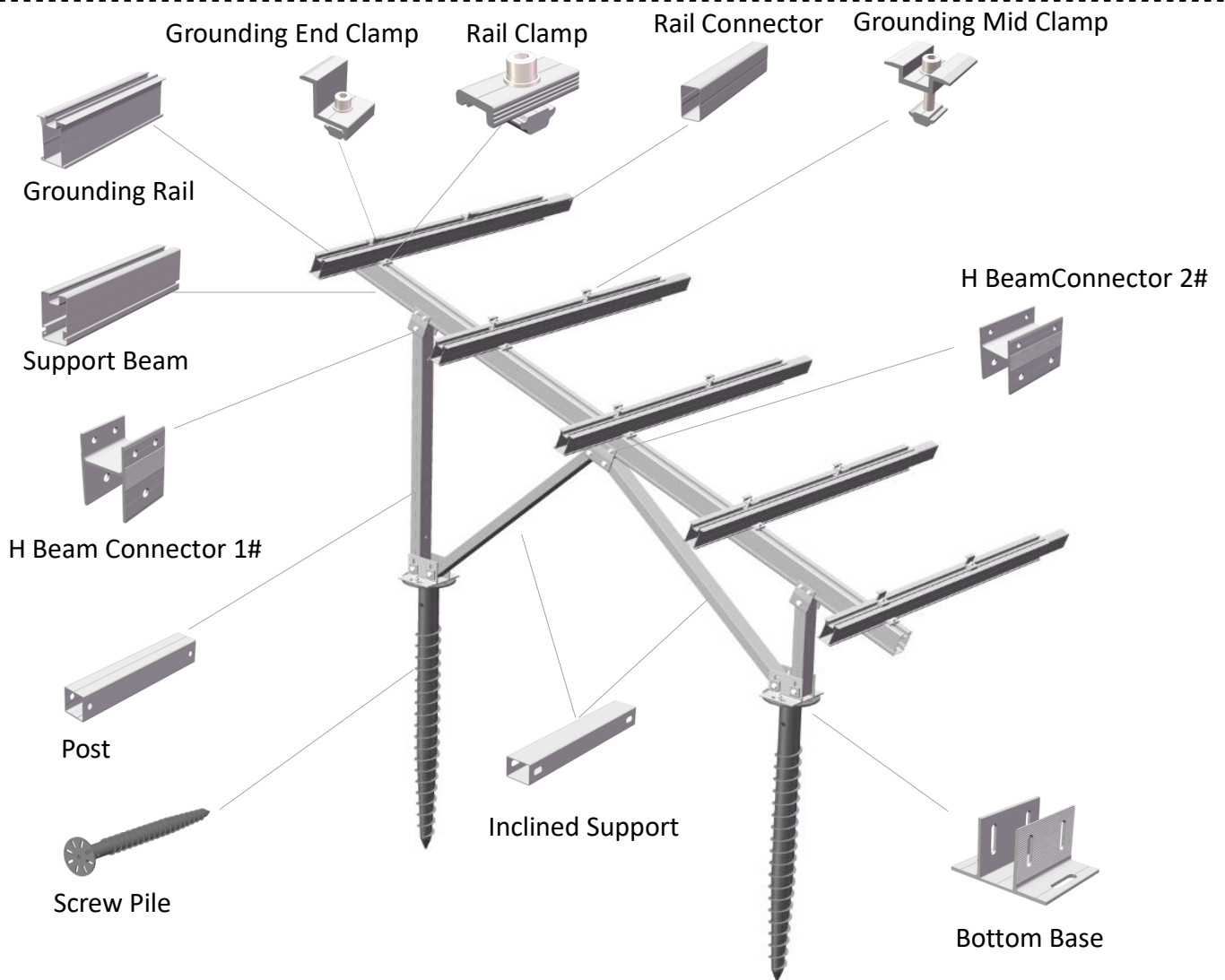
Technical Information

Install Site	Open Terrain
Tilt Angle	5°~60°
Snow Load	1.5KN/m ²
Module Orientation	Landscape or Portrait
Foundation Type	Concrete Base or Screw Pile
Material	Anodized Aluminum 6005-T5 (AL6005-T5), Stainless Steel 304 (SUS 304)
Design Standard	JIS C8955: 2011
Warranty	12years quality guaranty





Features

1. Products using aluminum alloy 6005-T5 (AL6005-T5) and stainless steel 304 (SUS 304), high strength, corrosion resistance is good
2. Most of the components are pre-assembled before shipment, there is no need to drilling, cutting and other operations on site, simply adjust locking to complete the installation
3. Screw Pile and concrete foundations optional
4. Compatible with most modules and most wind loads
5. Smart design reduce the difficulty of the installation on the most condition.

System Overview



Pre-assembled Mounting Types

 <p>No Front Leg Type: Application for ground clearance is lower than 500mm.</p>	 <p>W Type: Application for strong wind speed and snow load area.</p>
 <p>N Type: Application for general conditions.</p>	 <p>Several V Types: Application for many rows layout.</p>

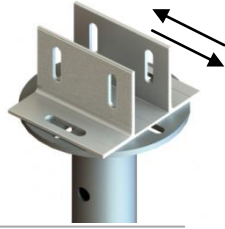
Aluminum Ground Mounting System



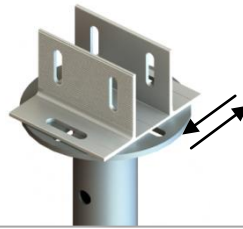
Adjustable Range



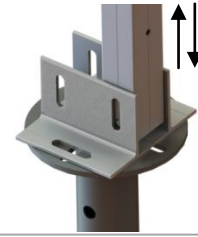
Ground Screw



45mm adjustable



40mm adjustable



30mm adjustable

Pre-assembled Mounting Parts

▼ N Type Pre-assembled



▼ N type mounting spread process



▼ N type mounting unfold status



▼ W Type Pre-assembled



▼ W type mounting spread process



▼ W type mounting unfold status



▼ No Front Leg Type Pre-assembled



▼ Spread Process



▼ Unfold Status



Aluminum Ground Mounting System



Connector

▼ Grounding Rail Connector: Use 8 pcs 6.3x25mm self-drilling screw to fix



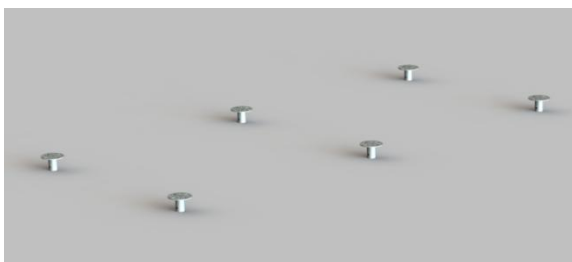
▼ Main Beam Connector: Use 8pcs 6.3x25mm self-drilling screw to fix



Back Structure Installation Guide



Installation Guide



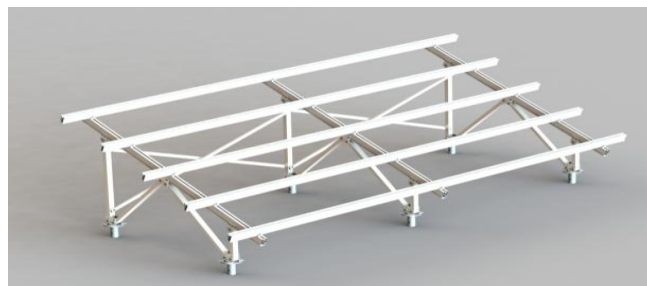
① Screw Pile Installation



② Pre-assembled Mounting Parts Installation



③ Finish the pre-assembled installation



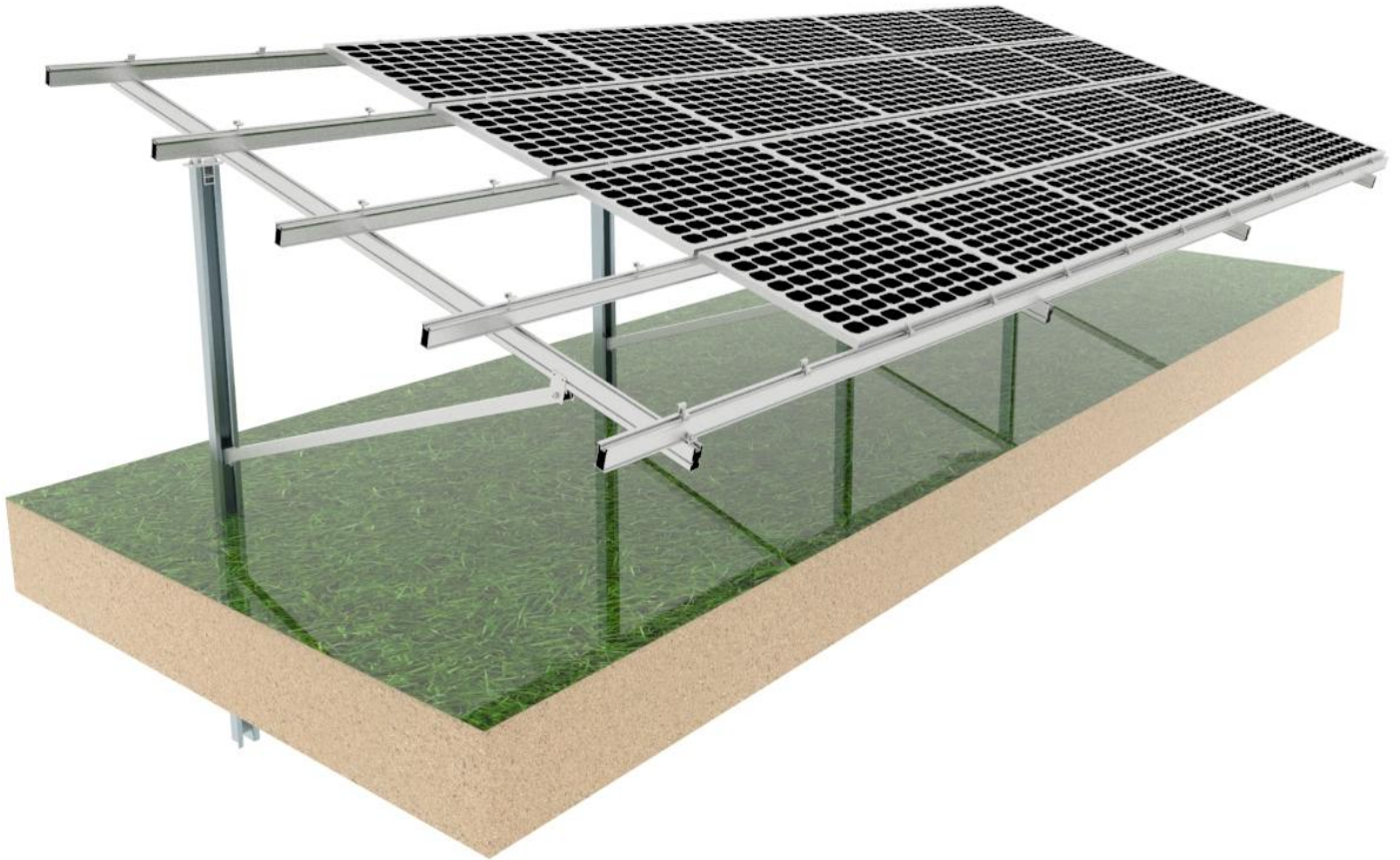
④ Grounding Rail and Back Structure installation



⑤ Finish Grounding Rail and Back Structure installation



⑥ Put the panel on that, use mid clamp and end clamp to fix them.



Technical Information	
Tilt Angle	5° ~ 60°
Max Wind Speed	42 m/s
Max Snow Load	1.5KN/m ²
Material	Galvanized Steel Q235 & Aluminum 6005-T5
Warranty	12 years quality warranty

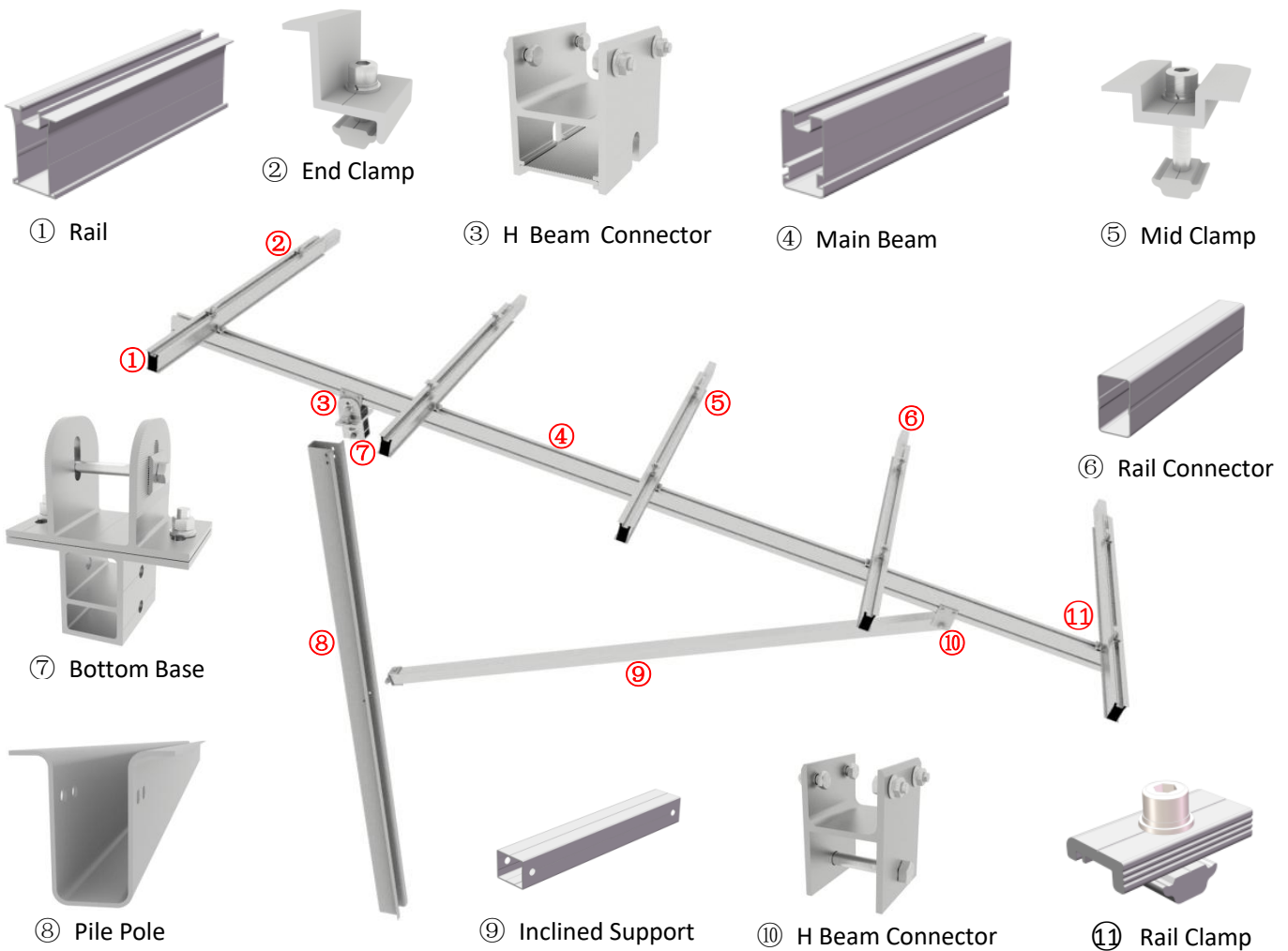
Features

1. Suitable for different regions, such as low-cost concretes and high wind and heavy snow regions.
2. Ground screw foundation and concrete foundation can be acceptable
3. Parts have been high pre-assembly on factory to save your installation time
4. Simple and fast installation
5. High quality galvanized steel material

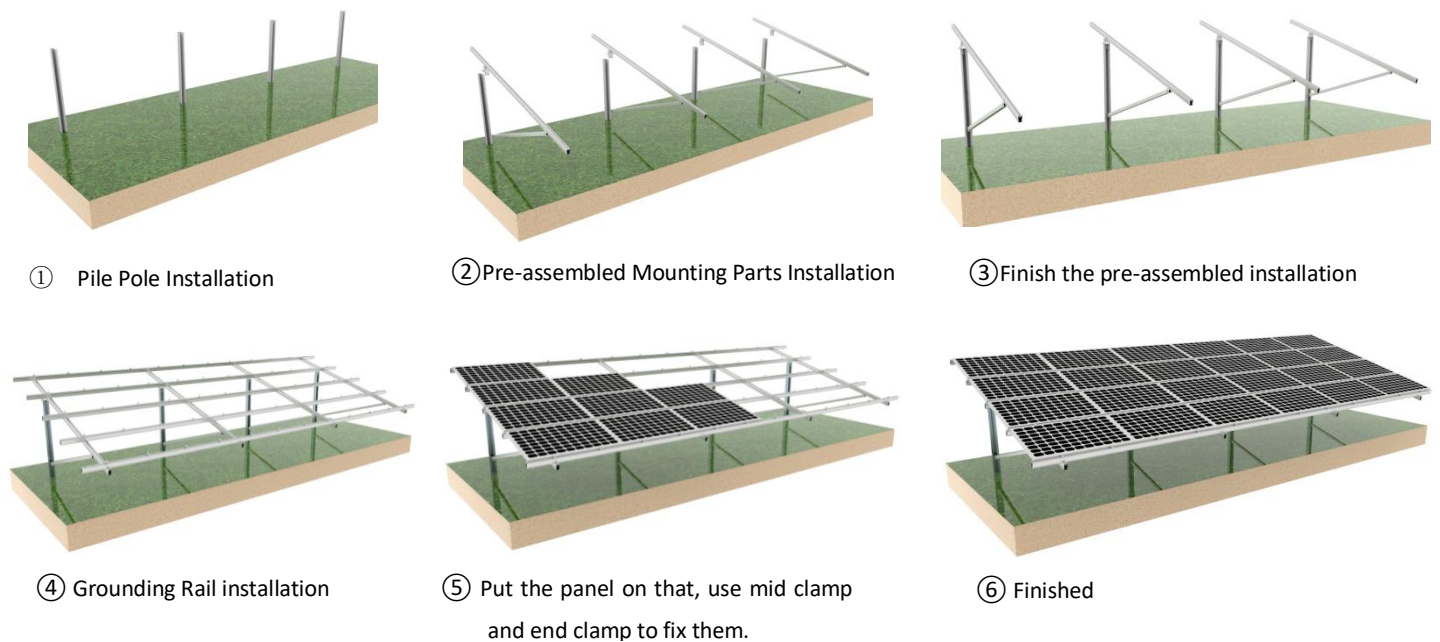
Pile Ground Mount System



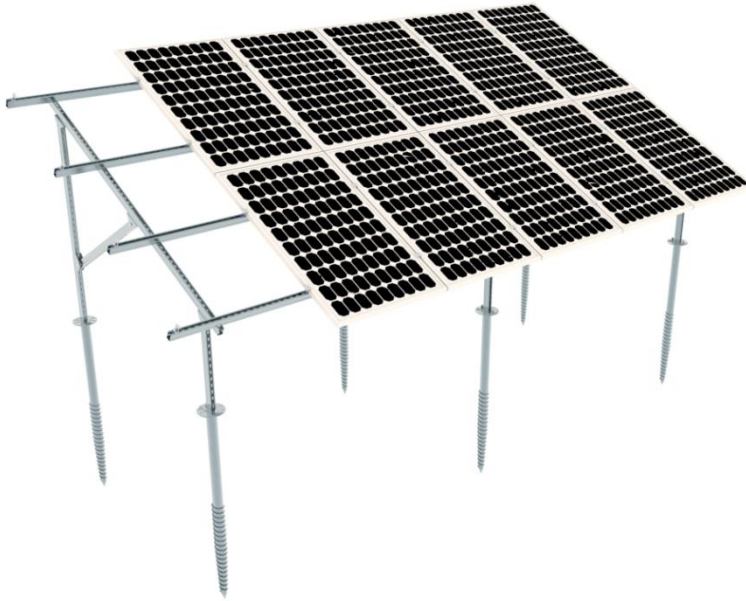
System Overview



Installation Guide



Galvanized Steel Ground Mount System



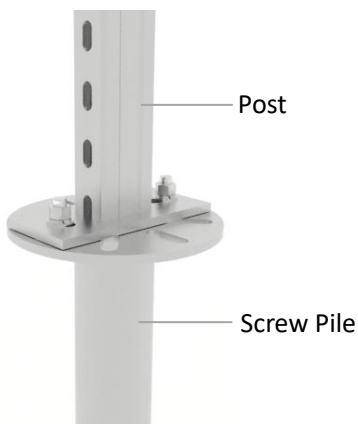
Technical Information	
Tilt Angle	5° ~ 60°
Max Wind Speed	55 m/s
Max Snow Load	1.4KN/m ²
Material	Galvanized Steel Q235
Warranty	12 years quality warranty

Features

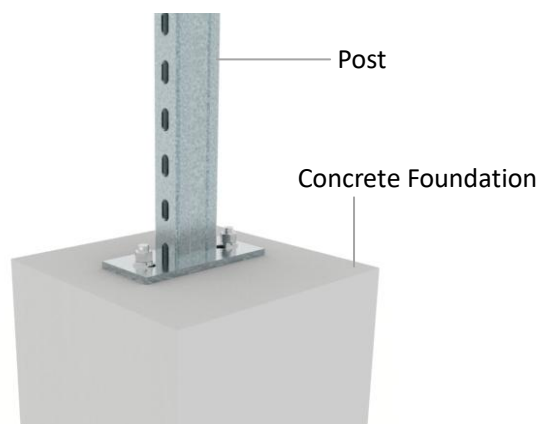
1. Suitable for different regions, such as low-cost concretes and high wind and heavy snow regions.
2. Ground screw foundation and concrete foundation can be acceptable
3. Parts have been high pre-assembly on factory to save your installation time
4. Simple and fast installation
5. High quality galvanized steel material



Foundation Types



Ground Screw Pile Foundation

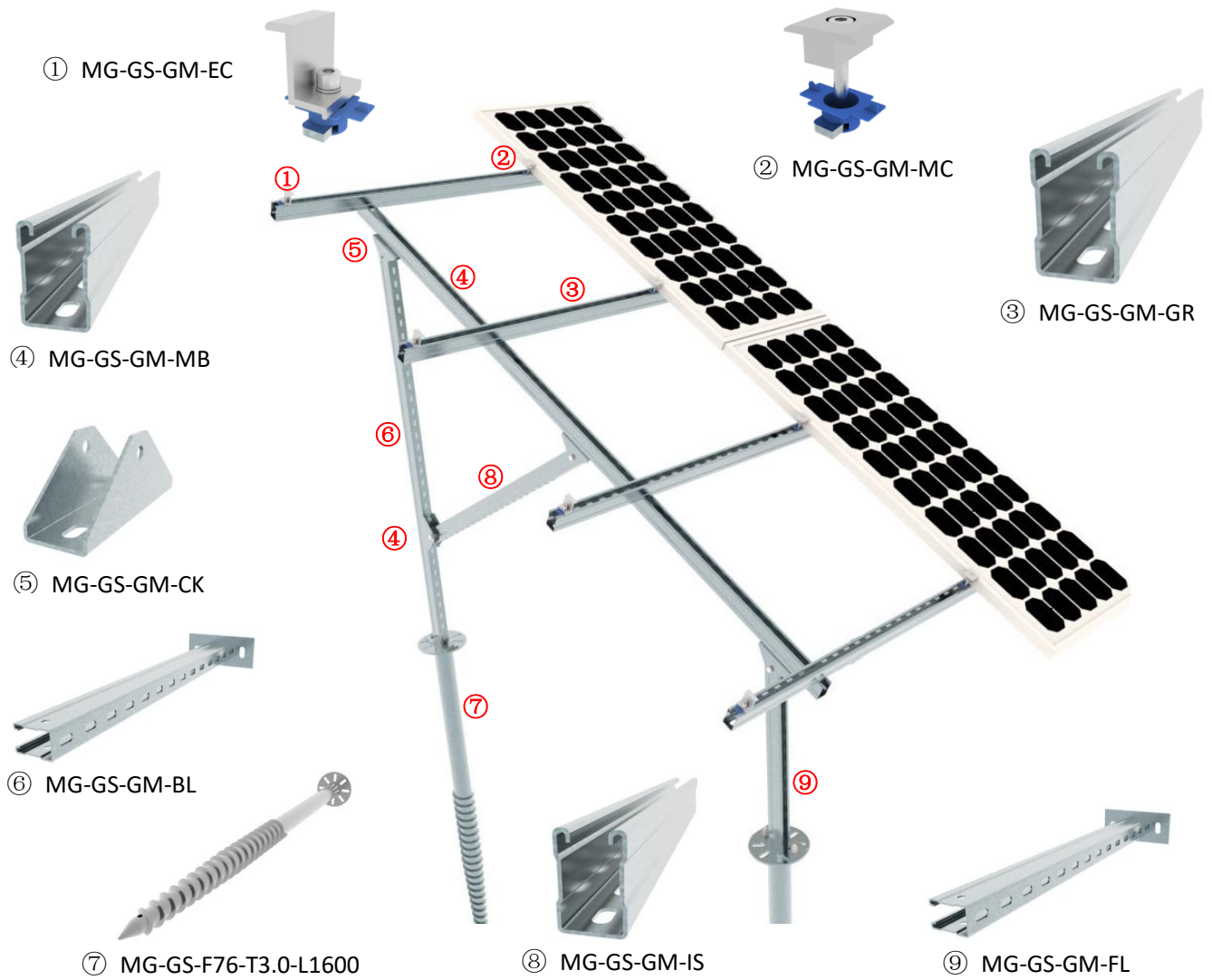


Concrete Foundation

Galvanized Steel Ground Mount System



System Overview



Side View of Galvanized Steel Mount System

