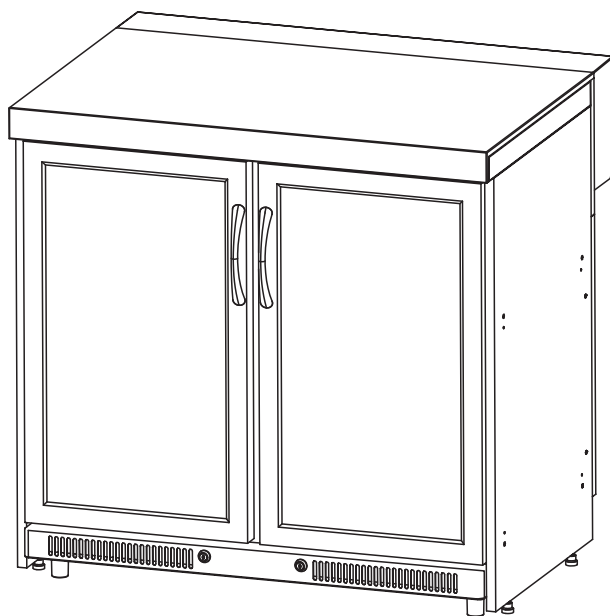




## Double Door Fridge & Cabinet Assembly Instructions



Please read these instructions carefully before the installation or usage process.

## Step 1

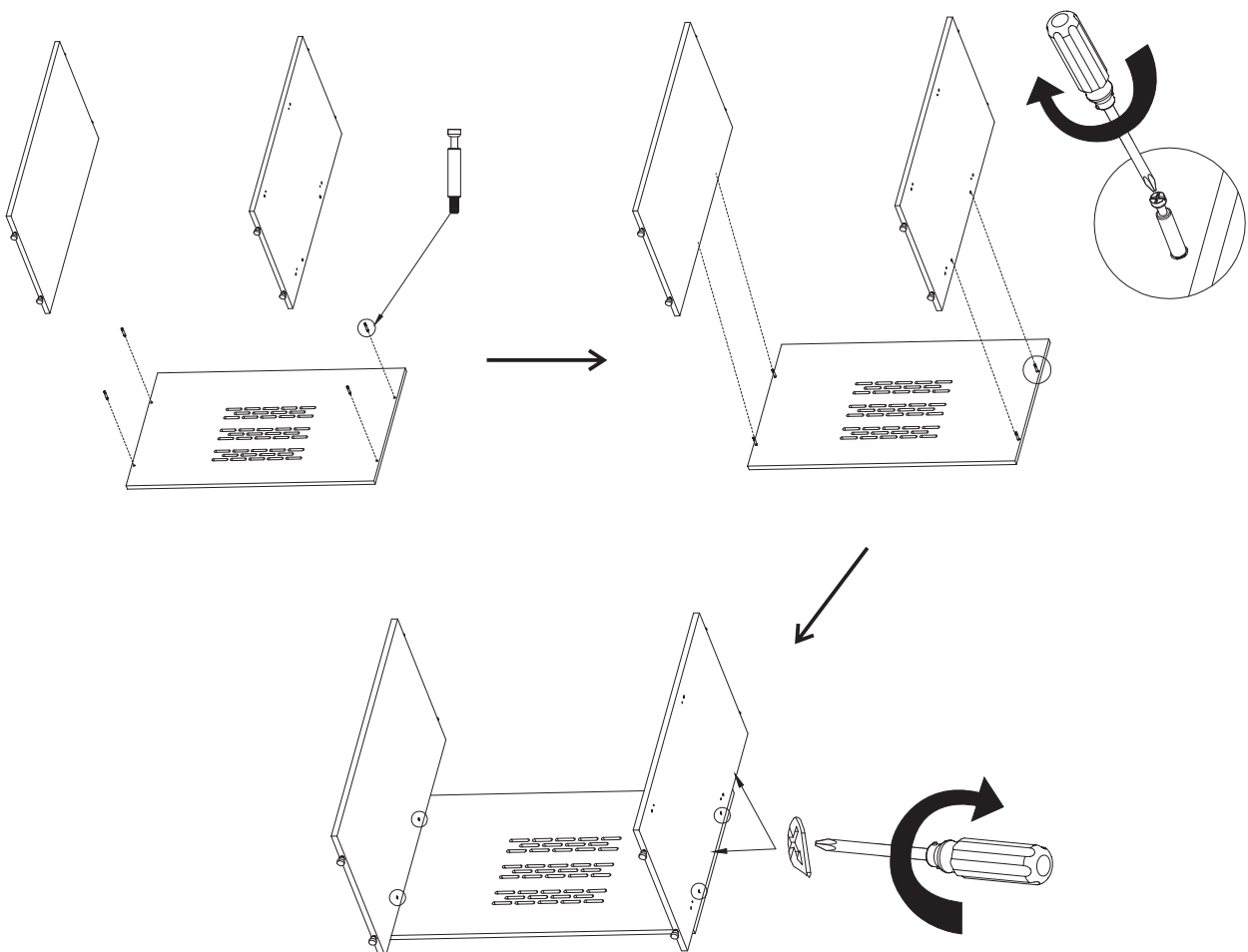
### Unpack and prepare cabinet assembly.

- ① Unpack all pieces and carefully place on a flat surface preferably on a blanket to protect from scratching.

## Step 2

### Assemble the cabinet frame (Sides & Back).

- ① Join the left and right-side panels with the back panel using 4pcs M4x40mm Cam Bolts and fully tighten.
- ② Importantly, ensure that both side panels have the M4x14mm screw holes facing outwards for attaching the end panel at the final stage.



**M4x40mm 4PCS**

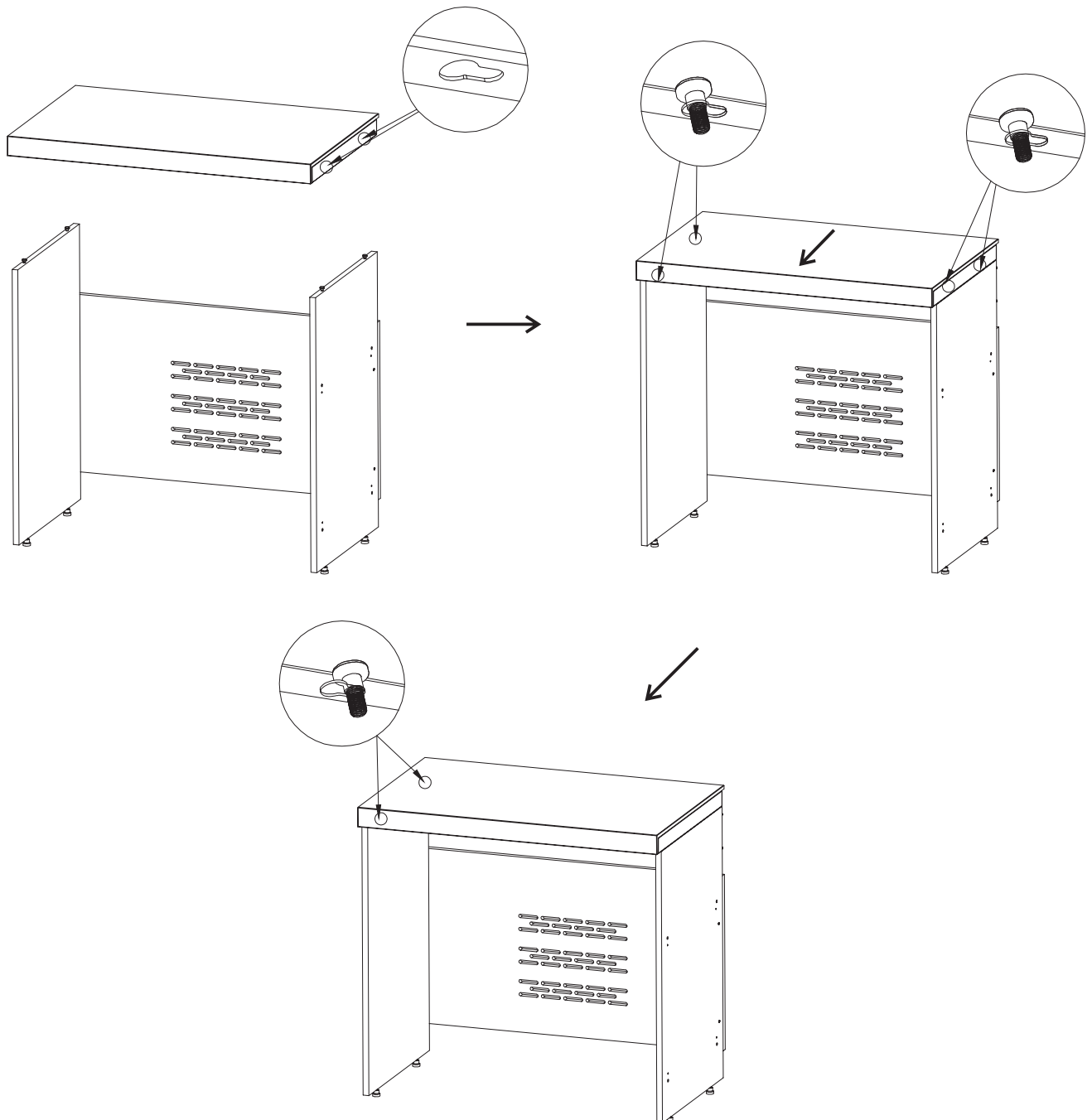
## Step 3



Install the benchtop (2 people required).

Remove the benchtop (very heavy) and ensure to place down carefully. Do not sit on the edges as you may chip the benchtop.

- ① Screw in 2pcs M4x25mm into the top of each of the fridge cabinet frame side panels. Do not fully tighten as you need room for the benchtop to slide on.
- ② Lift the bench top up and line up the screw holes, gently placing down exactly on top of the screws (which are partially raised).
- ③ Lock the bench top by pushing back and into place.

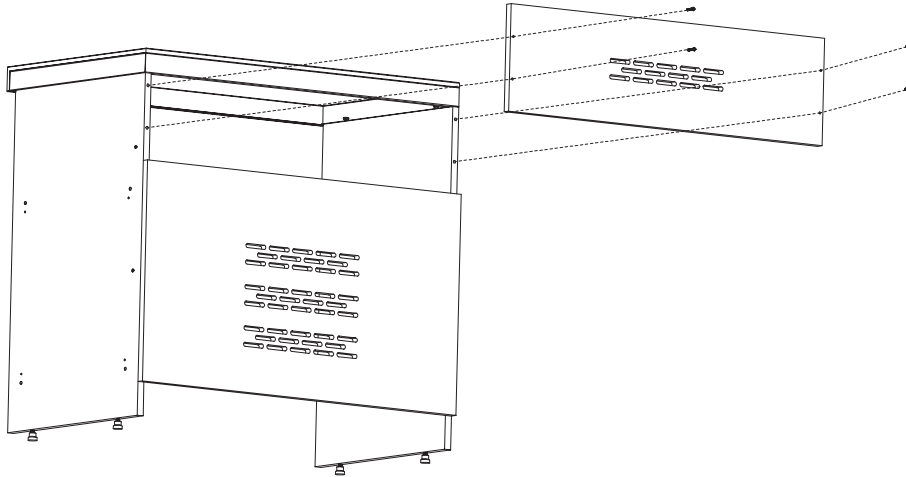


M4x25mm 4PCS

## Step 4

### Attach the rear panel.

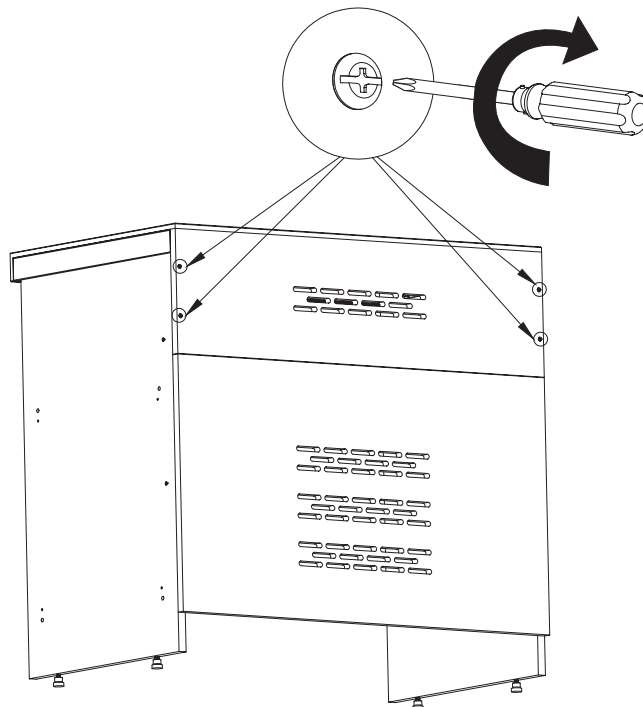
- ① Attach the rear panel using 4pcs M4x25mm Black rear panel fasten screw ensuring not to fully tighten cause you need to attach the bench to filler panel by these screws.



not  
supplied



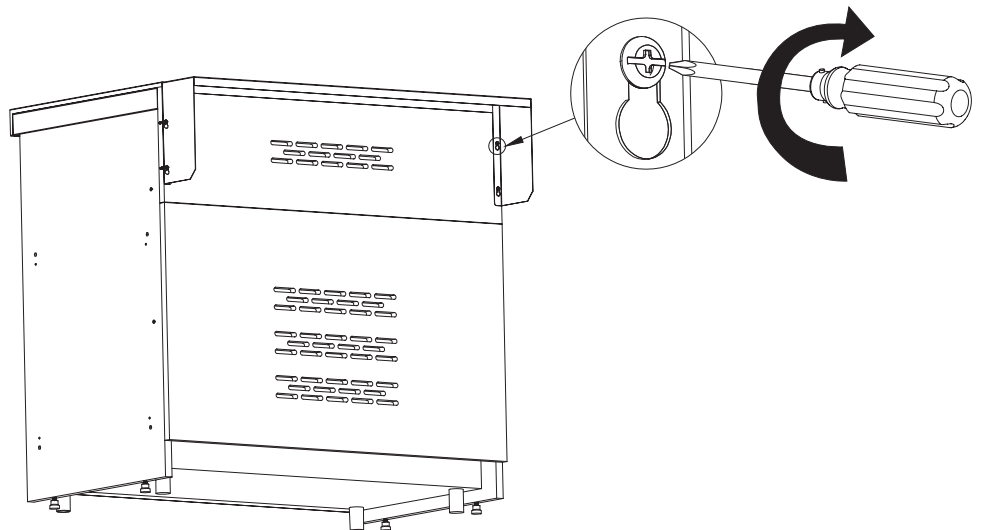
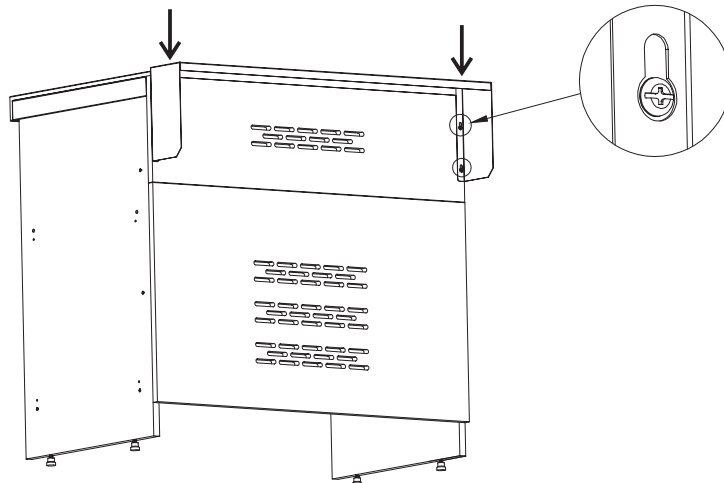
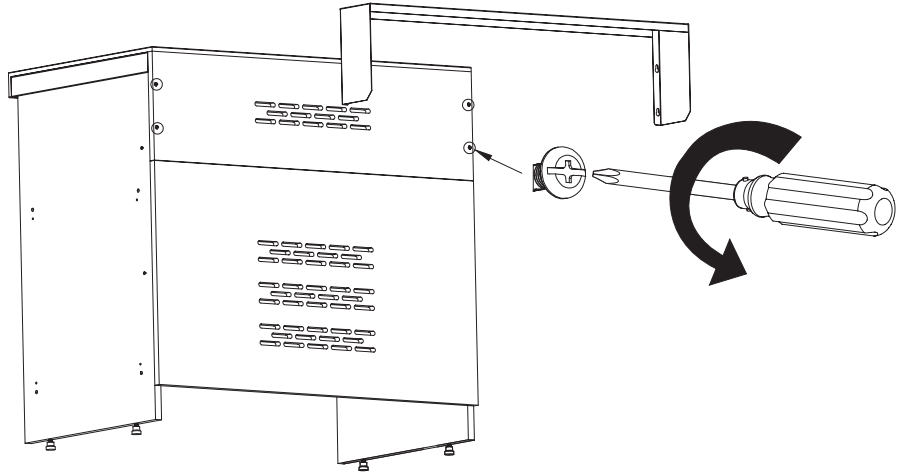
**M4x25mm 4PCS**



## Step 5

### Attach the Bench Top Extension Panel.

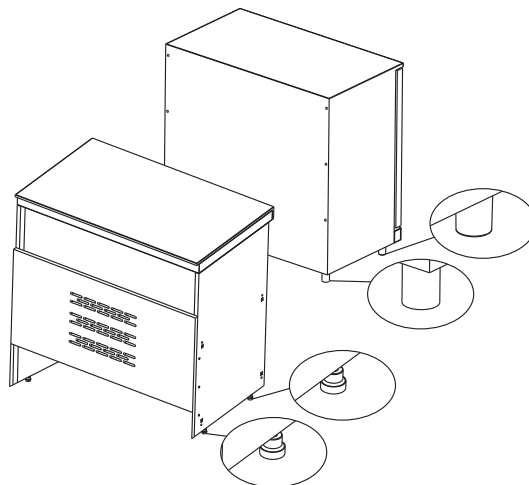
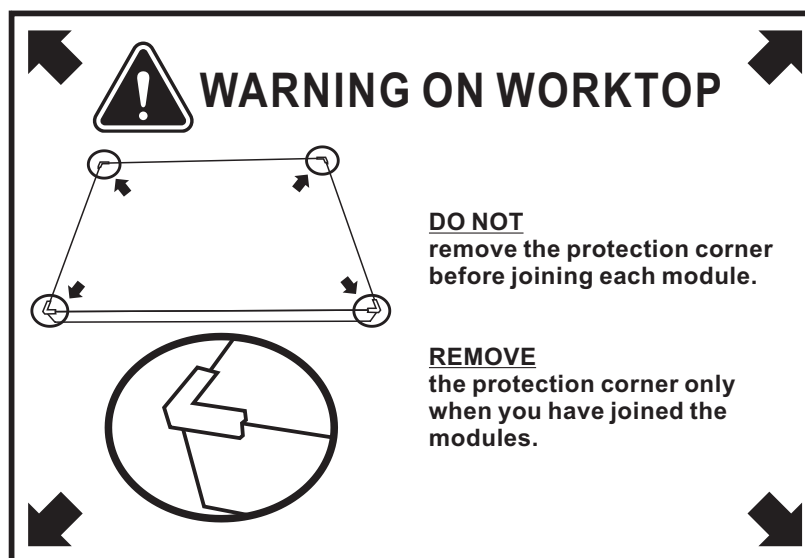
- ① Place the bench top Extension panel on the screws.
- ② Tighten the screws to secure both the rear panel & bench top Extension panel.



## Step 6

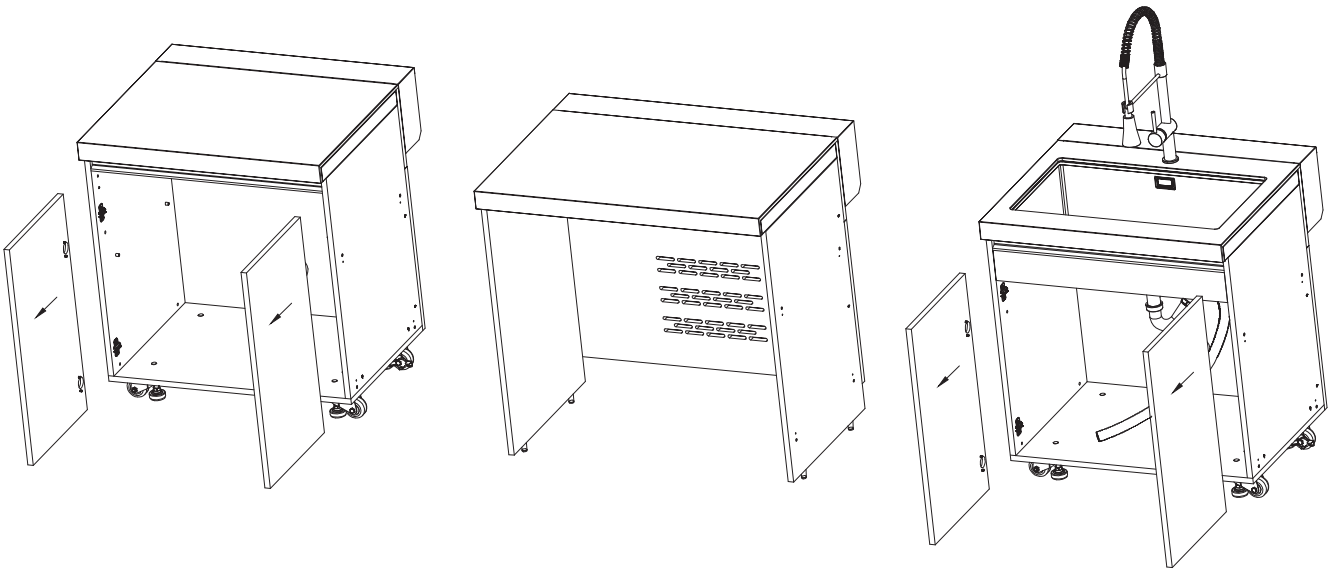
### Joining the cabinets together.

- ① Use the allen key(provided) to adjust the legs of other cabinets until the castor wheels are off the ground and all your cabinets are aligned with the height of the fridge cabinet.



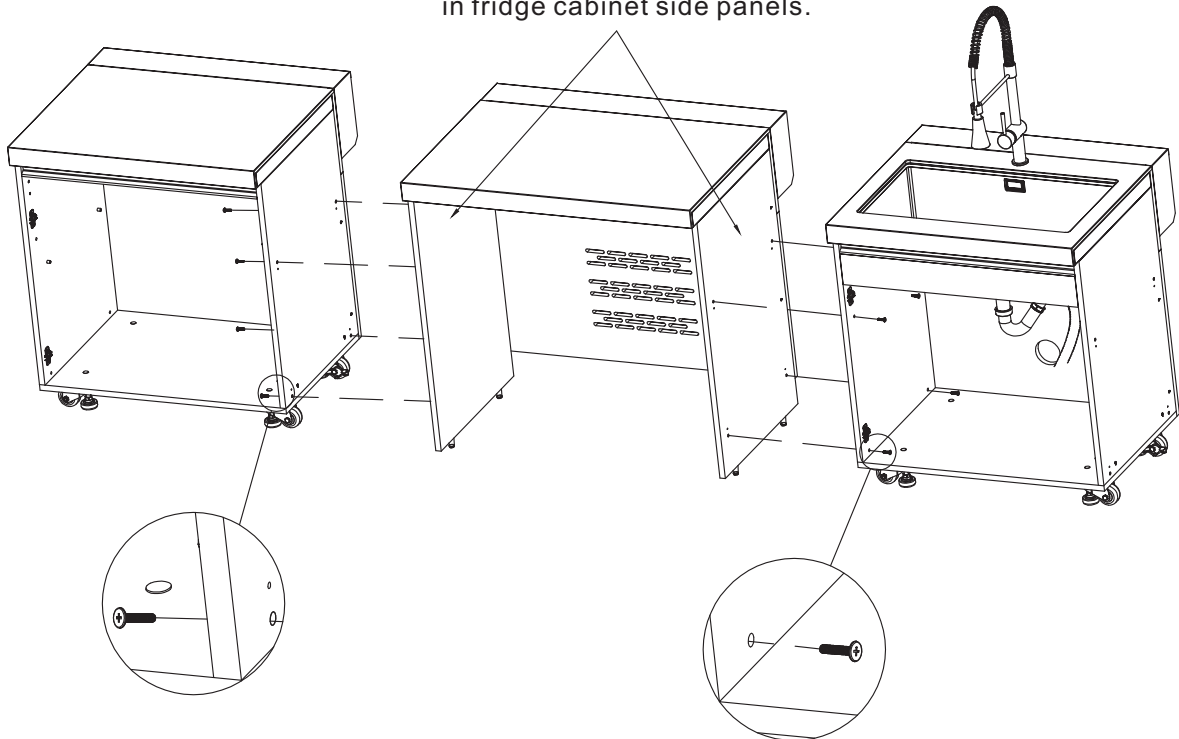
Note: Level the leg of double door fridge cabinet to ensure the fridge can be slide in.

- ② Remove the doors of the cabinets will be connected with the fridge cabinet, by releasing the hinge using the clip at the back.

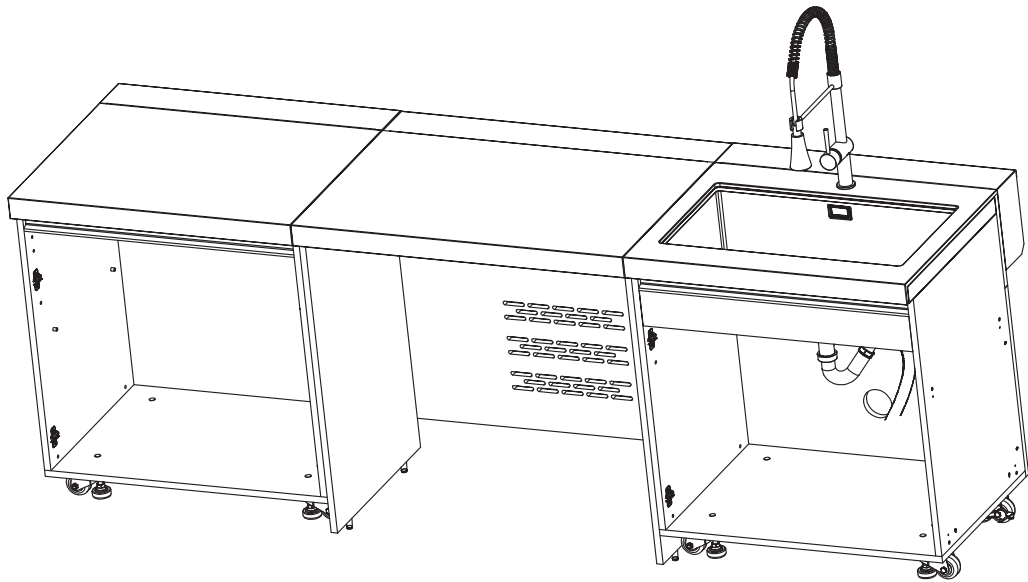


---

Threaded nuts inserted already  
in fridge cabinet side panels.

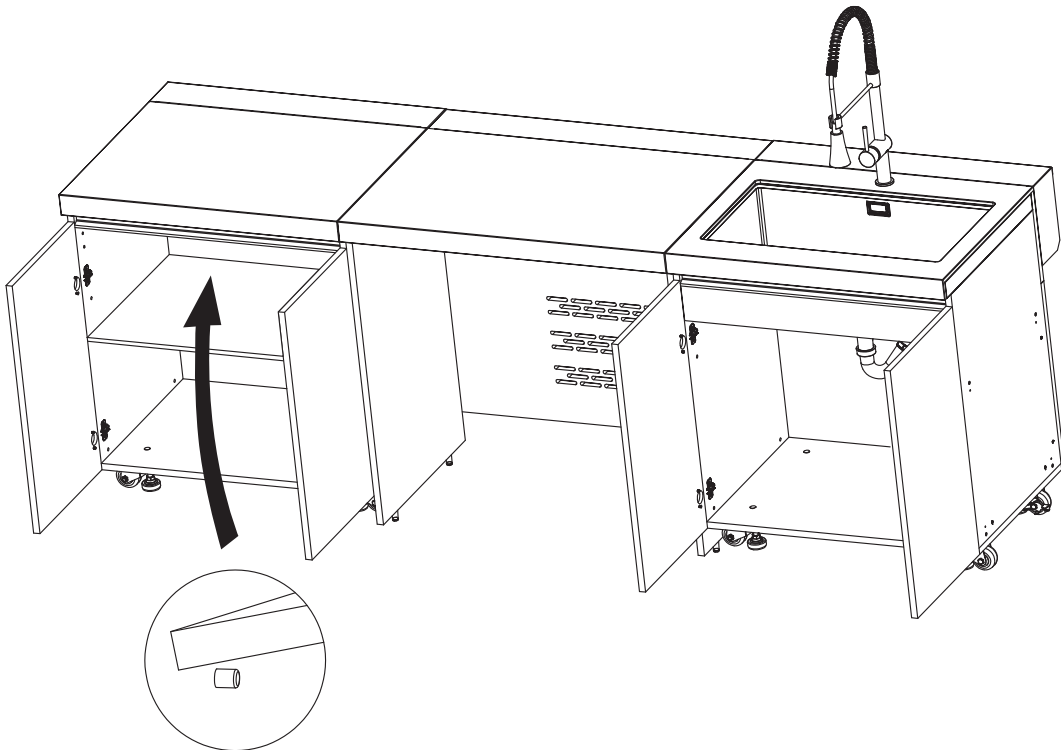


- ③ Attach the fridge cabinet frame by using 8pcs M5x25mm and securing tightly. After tightening, adjust the black screw legs on the fridge cabinet to ensure they are all touching the ground and level.



**M5x25mm 8PCS**

- ④ Place shelves into the cabinet and secure, Re-attach the doors.



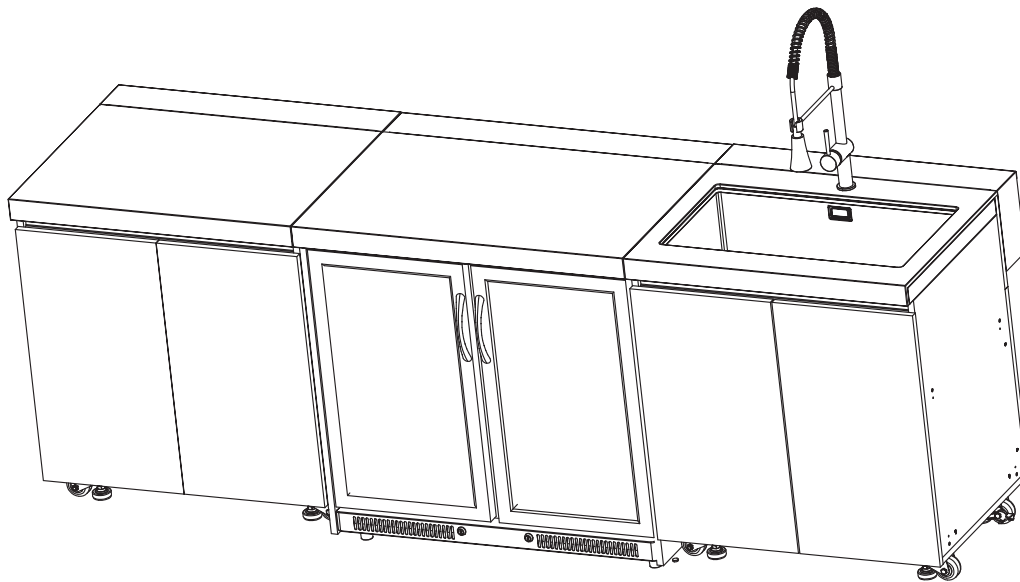
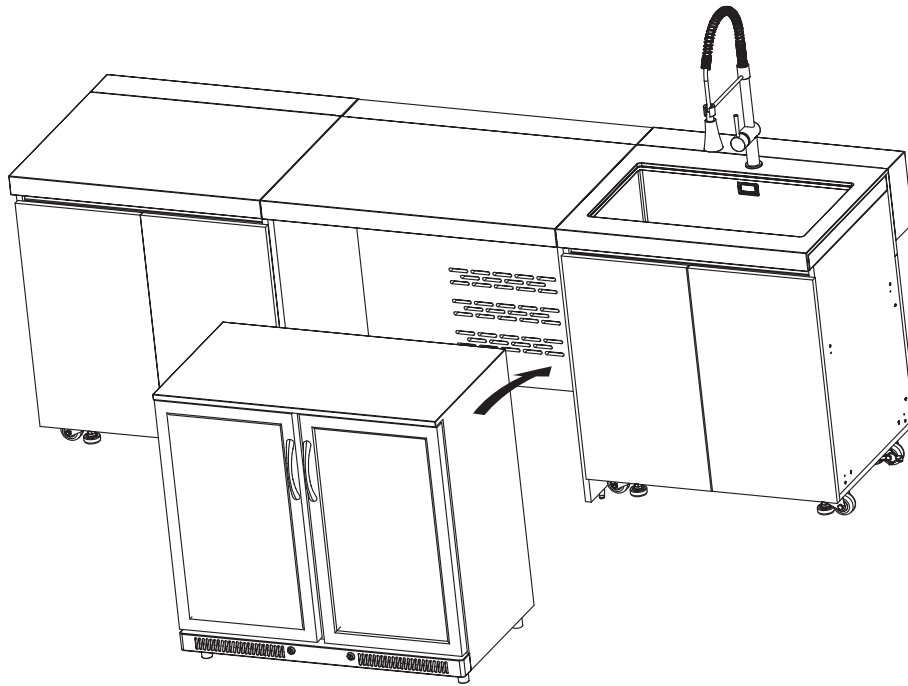
Put the shelves on the shelf clips.

## Step 7

### Slide Fridge In Place.

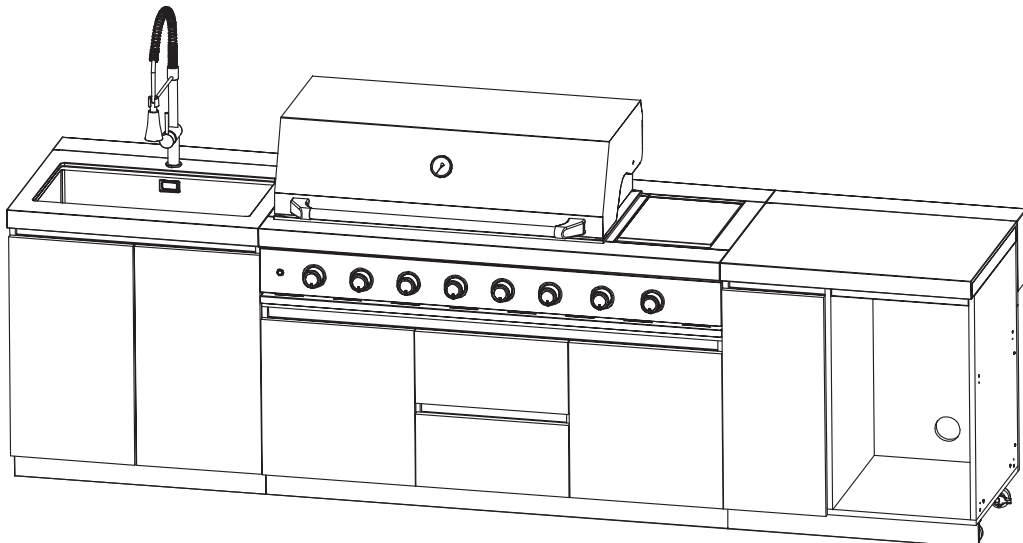
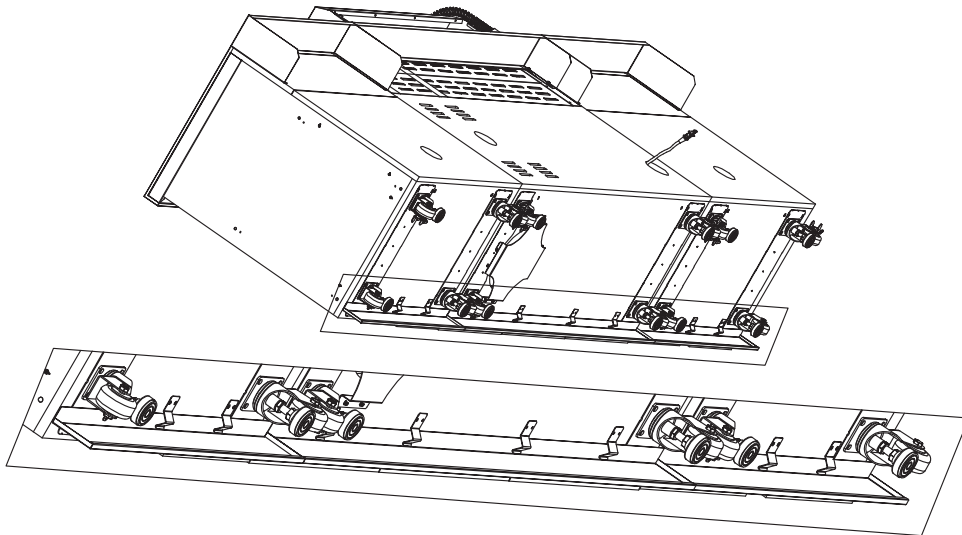
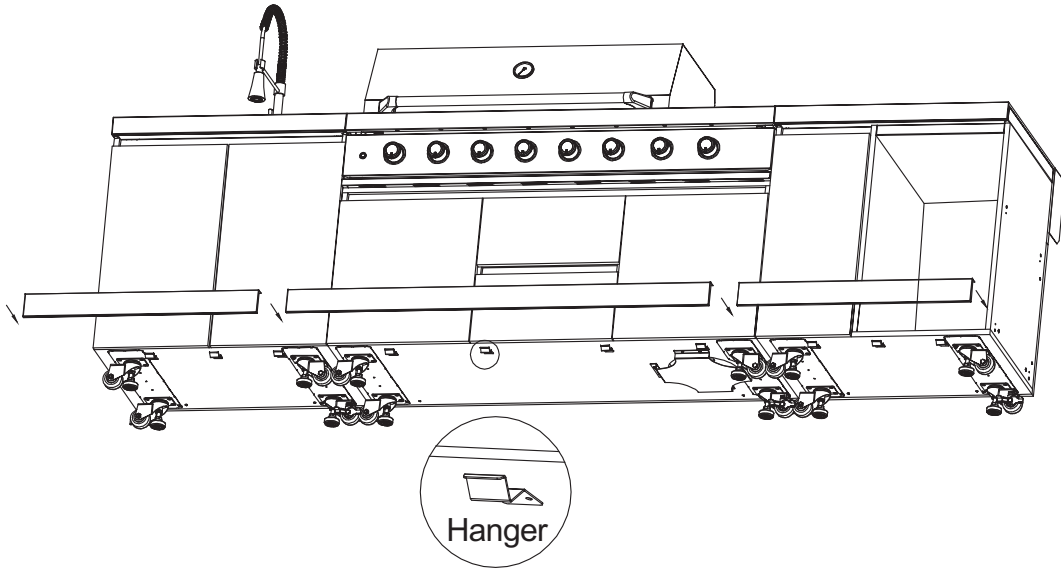
- ① Slide the fridge into the cabinet frame and make sure to pull the power cord through the hole cutout.

Note: If you need to install end panel on double door fridge cabinet, please slide in the fridge after the end panel installation. Please go to step 9 for end panel installation process.



## Step 8

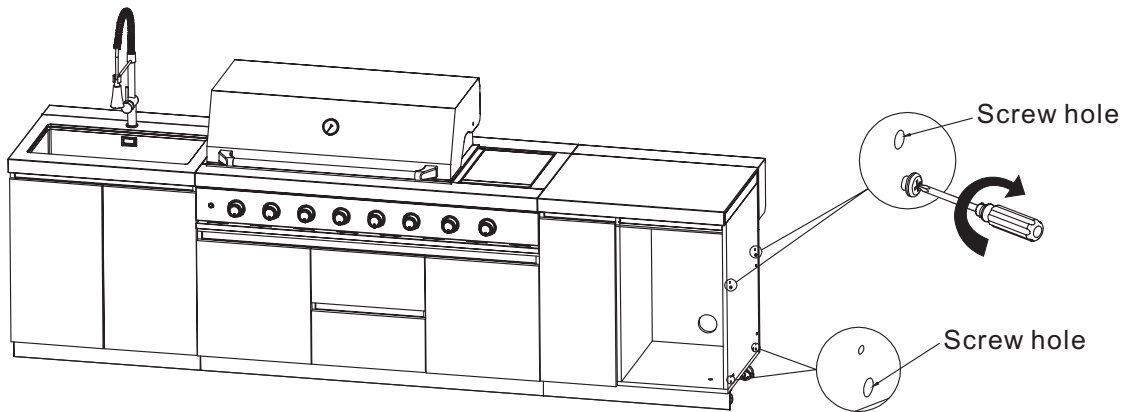
**Install the kick-boards.**  
Hang the kick-boards on the hanger.



## Step 9

### Install the End Panel.

- ① Insert 4pcs M4x12mm screws.
- ② Line up the end panel over the M4x12mm screw.

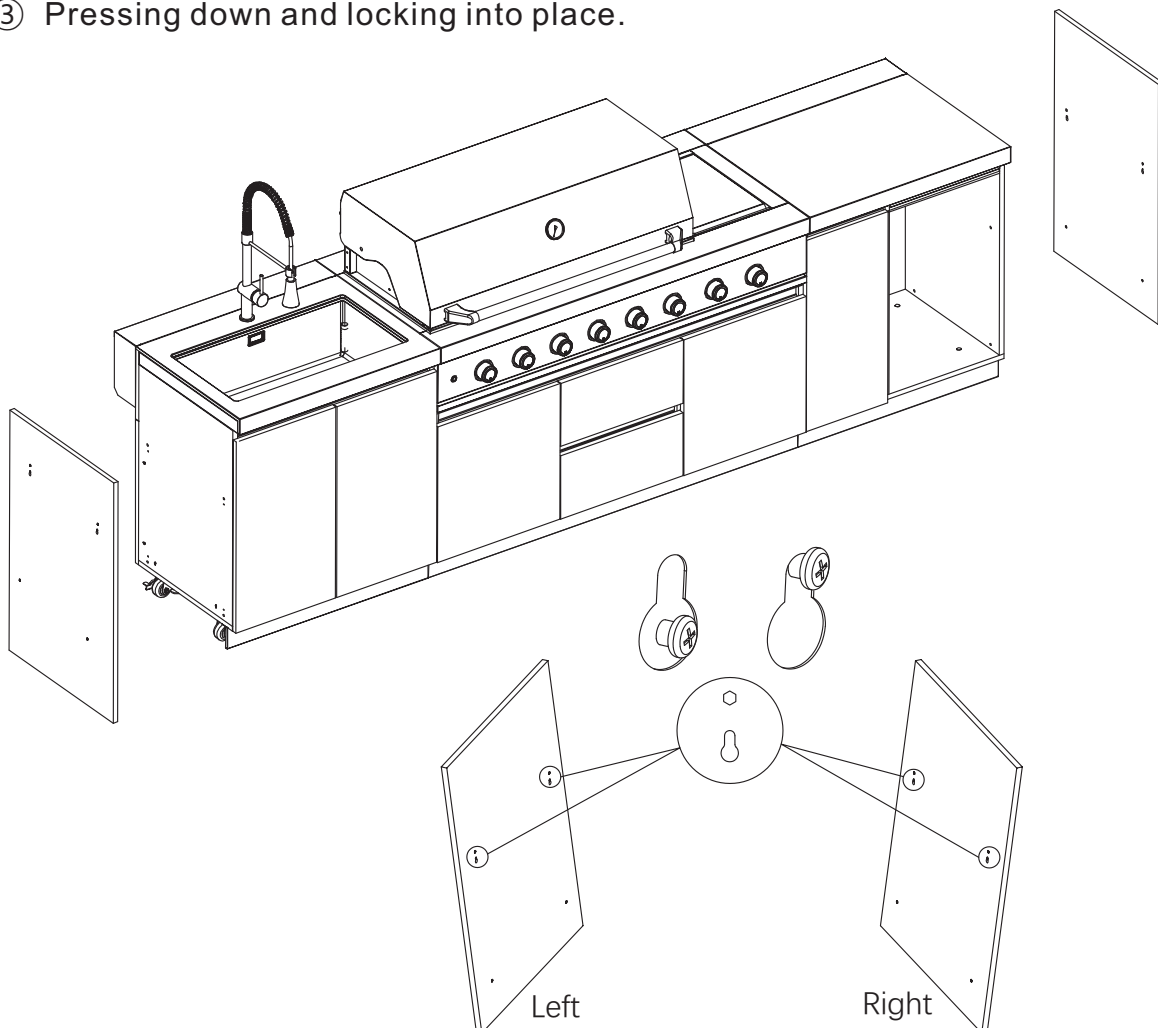


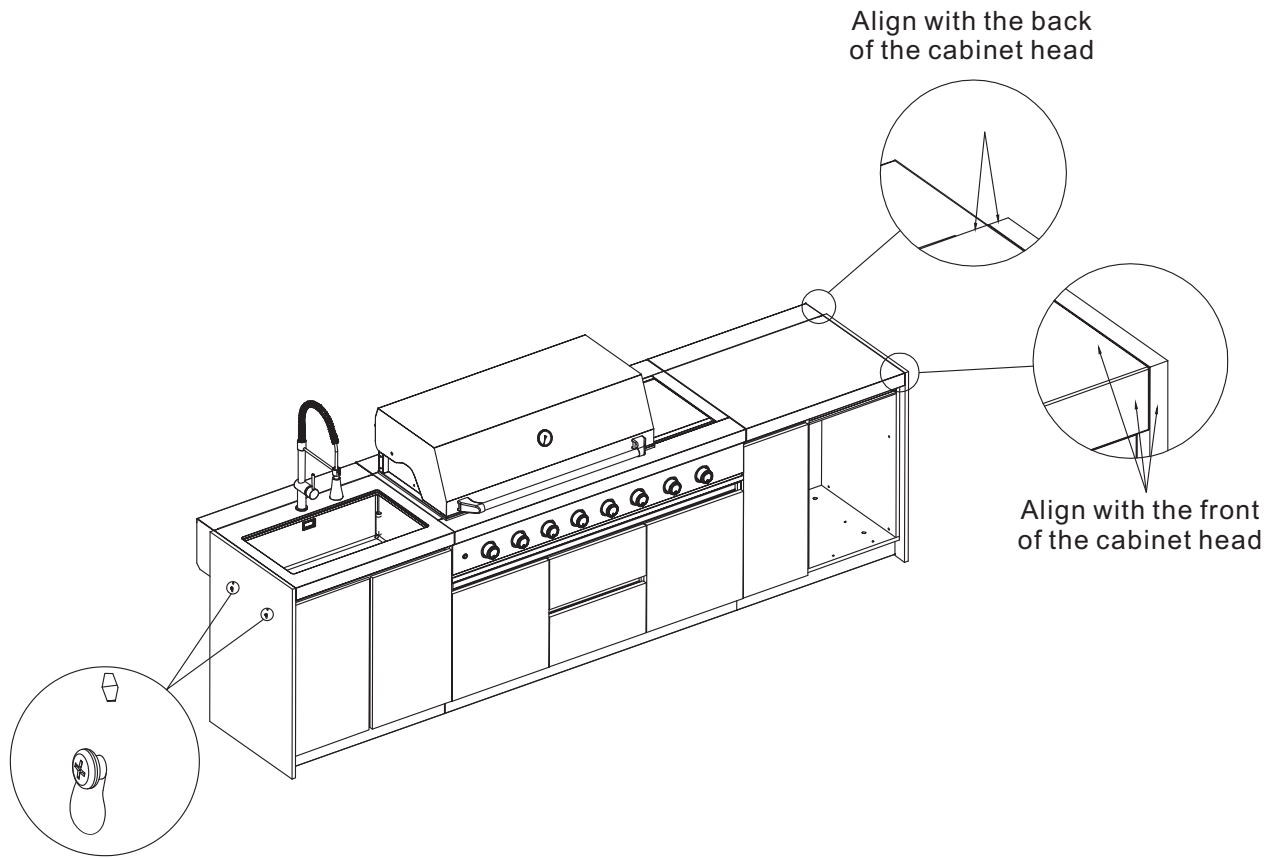
not  
supplied



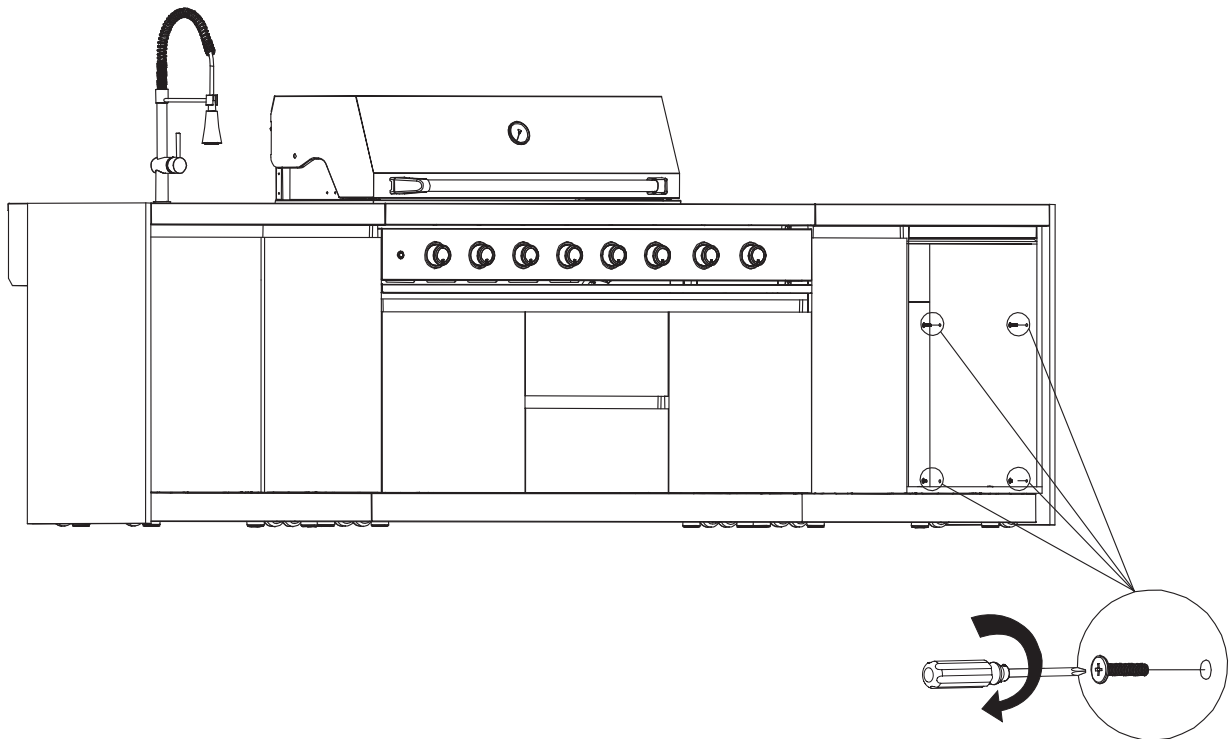
**M4x12mm Screw 4PCS**

- ③ Pressing down and locking into place.





④ Secure the end panel with the M5x25mm screws.



Note: End panels will only be installed on the right and left sides of each kitchen.



**M5x25 8PCS**

- ⑤ Put the gas bottle in and connect the gas the pressure reduction valve.
- ⑥ Put the fridge in the connect the electricity.

