



"Live Your Style"

-ASPHALT ROOFING SHINGLES

# Contents

EARN YOUR TRUST BY ONE HOME

01

PRODUCTS

03

Why Buildex

05

Contact Us

02

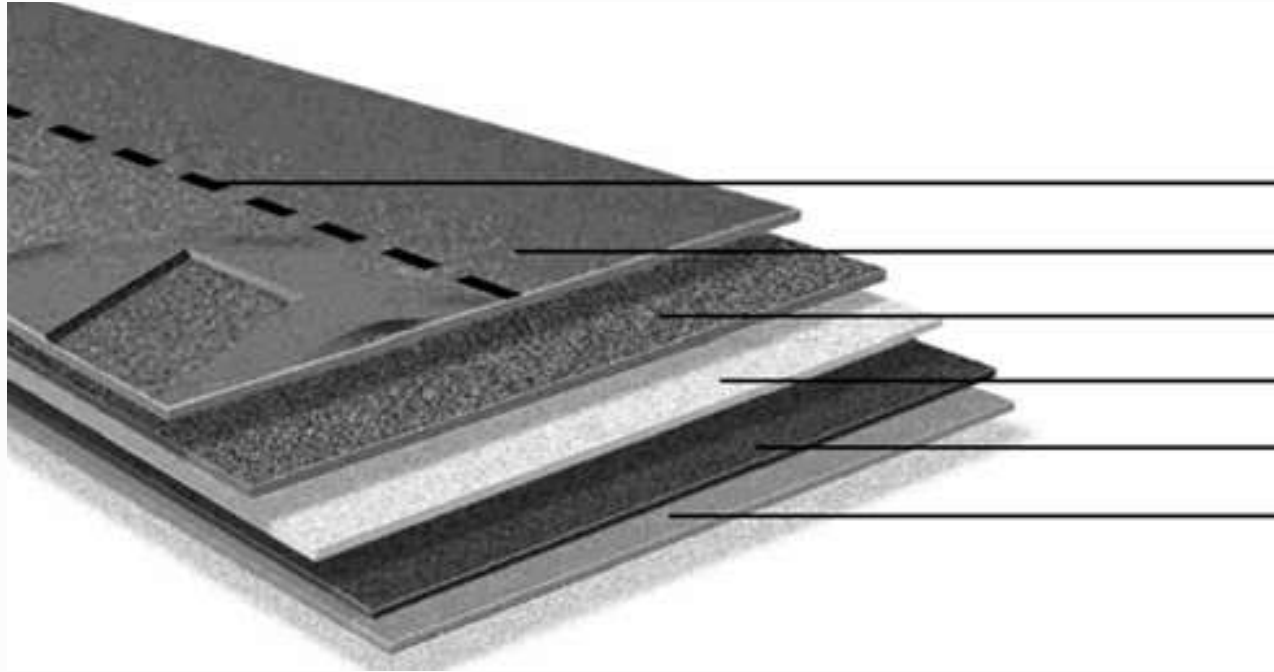
PRODUCTION

04

Our products

# Products

## What is the Buildex Asphalt Roofing Shingles?

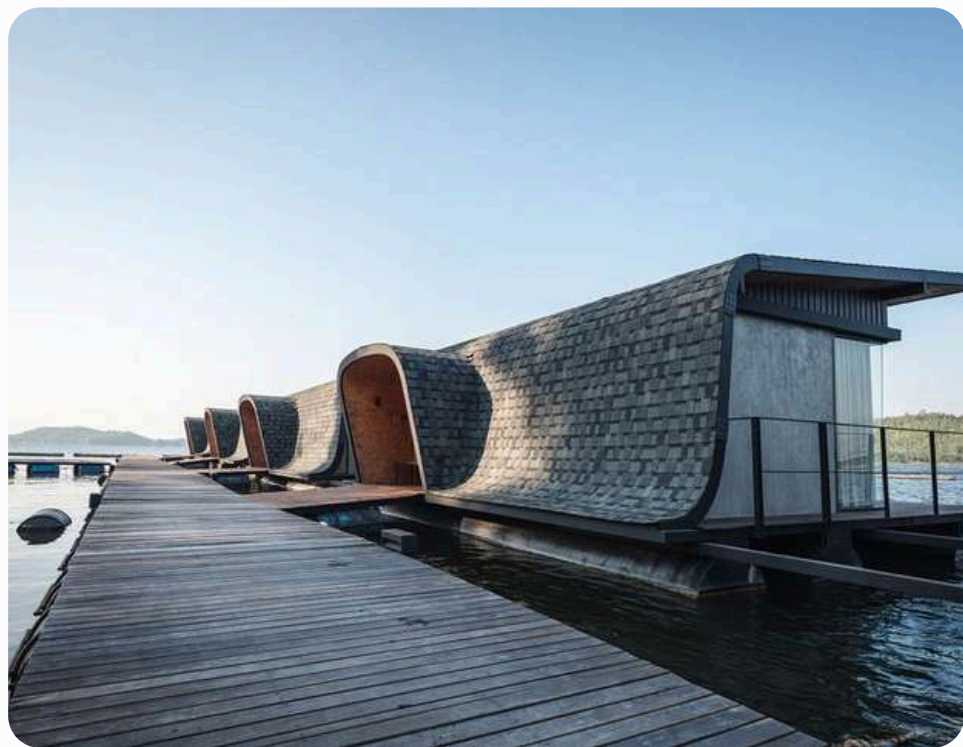


ADHESIVE BELT  
STONE GRANULES  
MODIFIED ASPHALT  
FIBERGLASS  
MODIFIED ASPHALT  
STONE GRANULES

Made from a sturdy fiberglass base, coated with waterproof asphalt and basalt stone granules. Because it is relatively affordable, easy to apply, fire-resistant, comparatively lightweight, available almost everywhere, and durable enough to last for 20 to 30 years.

In the past, uninteresting appearance was the biggest strike against asphalt roofing-it just didn't offer the visual interest and charm of classic materials such as wood and tile. But things have changed. Today, asphalt shingles are sold in many textures, grades, and styles that are reasonably convincing at mimicking the look and character of traditional materials.

CHINA RED	
ASIA RED	
Harbor Blue	
Sierra Gray	
BROWN WOOD	
BARK BROWN	
DIAMOND BLUE	
ESTATE GRAY	
DARK BLACK	
CHATEAU GREEN	
DESERT TAN	
AUTUMN BROWN	





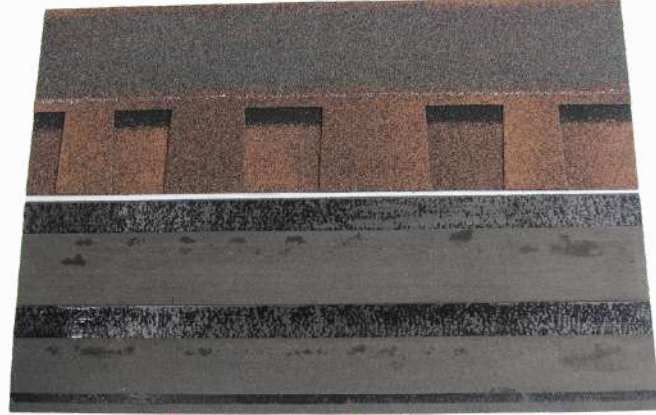
## SPECIFICATION

Length/pc: 1000 ± 3.0mm
Width/pc: 333 ± 3.0mm
Thickness: 5.2mm (± 0.1mm)
Quantity/Bundle: 16pcs
Weight/Bundle: 27kgs( ±0.5 kg)
Area/Bundle: 2.32m <sup>2</sup>
Lifespan: 30YEARS

# LAMINTED

The most elegant design of asphalt roofing shingles, more than 50% market share of American rooftop solutions. 30years lifespan to guarantee your house for many years.

**AMERICAN STYLE!**



# DESIGNS - 3 TAB

CHINA RED

ASIA RED

Harbor Blue

Sierra Gray

BROWN WOOD

BARK BROWN

DIAMOND BLUE

ESTATE GRAY

DARK BLACK

CHATEAU GREEN

DESERT TAN

AUTUMN BROWN





## SPECIFICATION

Length/pc: 1000 ± 3.0mm

Width/pc: 333 ± 3.0mm

Thickness: 2.7mm (± 0.1mm)

Quantity/Bundle: 21pcs

Weight/Bundle: 27kgs( ±0.5 kg)

Area/Bundle: 3.1m<sup>2</sup>

Lifespan: 20YEARS

# 3-TAB

The most effective roof solution goes to 3-TAB asphalt roofing shingles.

In South East Asia, more than 200 containers we are selling yearly!  
20years lifespan with colorful choices!

**HOTEL & RESORT CHOICES!**



# DESIGNS - MOSAIC







## SPECIFICATION

Length/pc: 1000 ± 3.0mm

Width/pc: 323 ± 3.0mm

Thickness: 2.7mm (± 0.1mm)

Quantity/Bundle: 21pcs

Weight/Bundle: 21kgs( ±0.5 kg)

Area/Bundle: 3m<sup>2</sup>

Lifespan: 20YEARS

# MOSAIC

Which design could work on irregular buildings? That's where Mosaic's name comes from!

Resort, Hotel, Commercial & Residential buildings!



**FAST INSTALLATION WITH GOOD LOOKS**

# DESIGNS - FISH SCALE





## SPECIFICATION

Length/pc: 1000 ± 3.0mm

Width/pc: 333 ± 3.0mm

Thickness: 2.7mm (± 0.1mm)

Quantity/Bundle: 21pcs

Weight/Bundle: 27kgs( ±0.5 kg)

Area/Bundle: 3m<sup>2</sup>

Lifespan: 20YEARS

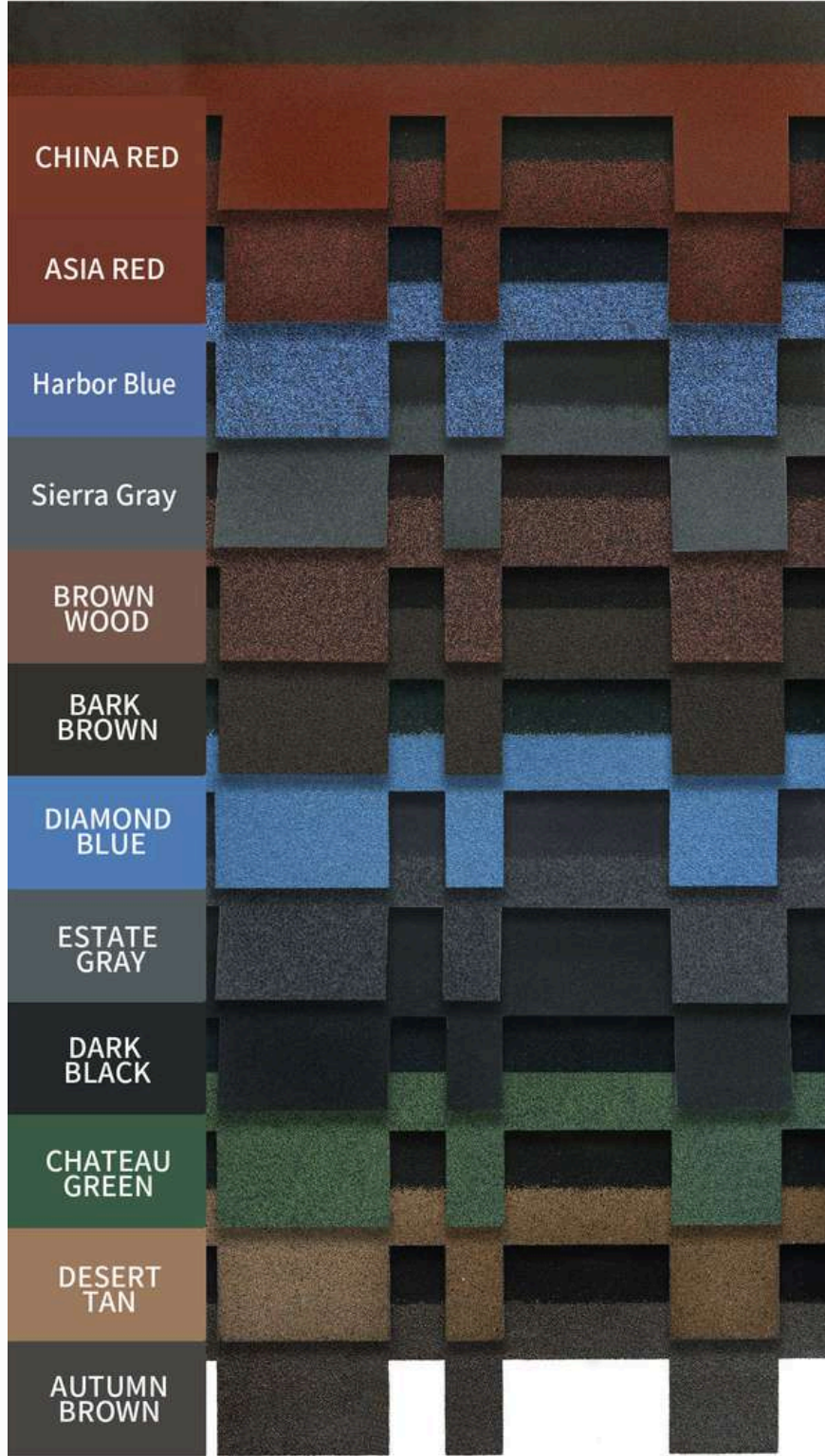
# FISH-SCALE

The most elegant design of asphalt roofing shingles, more than 50% market share of American roof top solutions.

**ROOF WITH ELEGANCE!**



# DESIGNS-GOETHIC





## SPECIFICATION

Length/pc: 1000 ± 3.0mm

Width/pc: 323 ± 3.0mm

Thickness: 2.7mm (± 0.1mm)

Quantity/Bundle: 21pcs

Weight/Bundle: 21kgs( ±0.5 kg)

Area/Bundle: 3m<sup>2</sup>

Lifespan: 20YEARS

# GOETHIC

Low cost to get Goethic designs, especially for high pitch roofs. More than 12 colors to mix!  
Hot sale in Vietnam, Philippines and middle east.



**VIVID & 3D LOOKS**

# ACCESSORIES



# Production



# Why BuildEx- Stone Granules

All Buildex roof tiles are coated with natural stone chips, volcanically formed and taken from quarries in French. These coatings add natural beauty to the roof and a hard layer of protection from the weather. Being of natural stone, the vibrant colour is protected against the extreme UV of the INDONESIA sun and will never change.



 **France Introduced CL Stone Granules**

High production capacity and reliable granules manufacturer in the Asia-Pacific region



**CL ROCI LTD**



Using the same raw materials of stone granules with Korean brand.

Some unknown brands that use dyed sand and sell them at low prices



Dyed stone chips



Color Faded



Sand off



# Why BuildEx- Quality Management



All Buildex roofing shingles undertake **strict quality control** before sending them out. Color uniform from different order and same order. Bitumen quality and back-side adhesive layers are standard in our production lines.

**FULL WARRANTY** for every pieces of BUILDDEX roofing shingles. Enjoy China cost with American quality



# More Than SHINGLES

Branding



Start your own brand to invest 100% of yourself for your own career!

Quality



95% of our customer usually cooperate with brand like IKO, GAF, CERTAINTEED, BMI.

Certificate



Various quality certificate and test report to ensure our quality.

**Marketing Support**



**Growing together with Sangobuild. We have been build many new market from 0 to 1 since 2016!**

**Free Samples**



**Free small side samples and big size samples for you check our quality well.**

**Warranty**



**Lifespan warranty.  
Color warranty.  
Anti-Algae warranty.**

## Professional Sales Service



Trained well sales team with many years experience. Hard work and best care service culture of our company

## Engineer Team Supports- (Especially for project, house owner.)



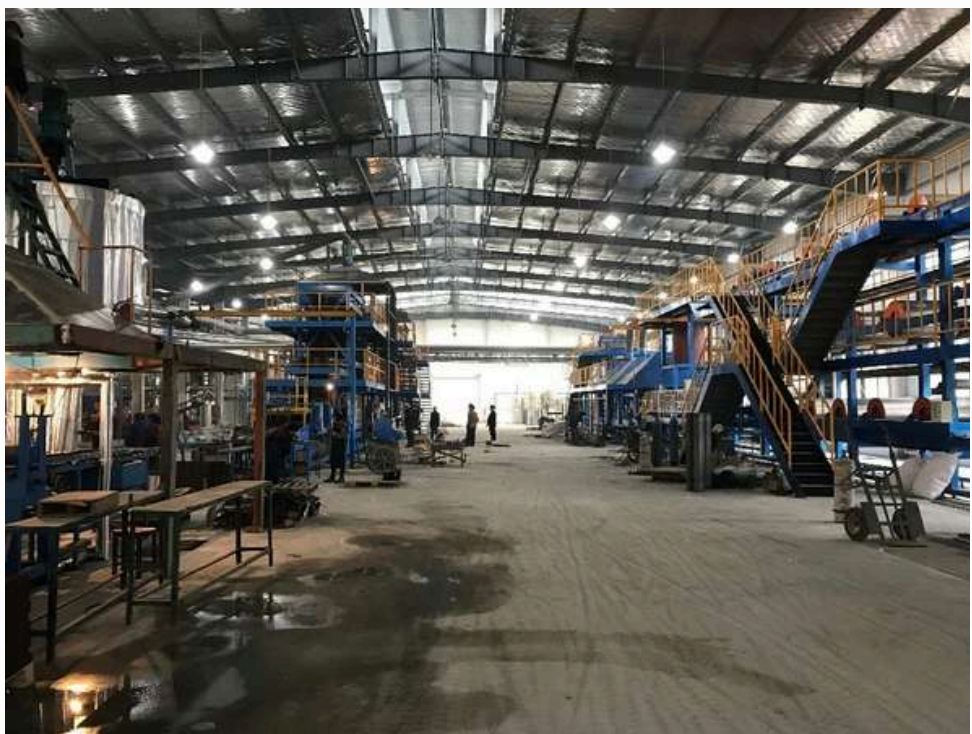
Cooperating with famous university in China. Our engineer team is developing to provide professional service for your project!!

## Fast Delivery Time



7days delivery time

# FACTORY SHOW



# FAQ

## **1: Delivery time?**

7-15days.

## **2: Packing Method:**

48 bags per pallet.

20 pallets per 20ft container.

## **3: Payment terms.**

For full container: 30% T/T as deposit, the rest paid against B/L copy.

For leak container: 50% T/T as deposit, the rest paid before loading.

## **4: MOQ.**

200square meters for standard colors

## **5: Does the color fade?**

Buildex uses the same granules are using by a famous brand- CARLAC GROUPE from France, we offer you a color warranty of 20 years with no fading.

## **7: Do the Algae grow?**

With extra formula, our roofing shingles have 10-year lifespan for Anti-Algae. In wet and forest places, it is recommended.

# Reach us



**HANGZHOU BUILDEX BUILDING MATERIALS CO.,LTD**

*Phone/Wechat/Whatsapp* **+86 177 9980 6182**

*Email* **lean@buildexc.cn**

*Website* **www.buildexc.cn**

*Headquarter* **Room 2021, Building 5, Digital Culture  
Liangzhu, Hangzhou, China.**

[www.buildexc.cn](http://www.buildexc.cn)