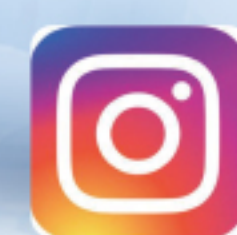
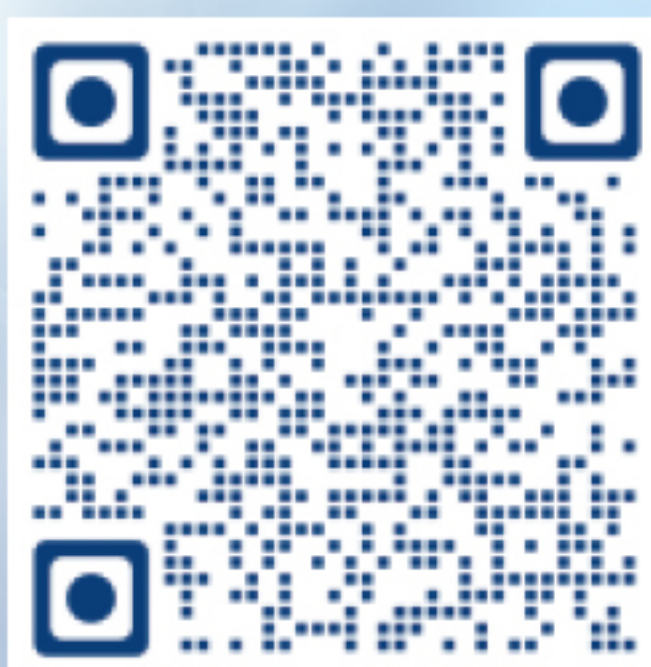


UAIM-01

SUPER 8" LCD

Precise Torque

3 Years Warranty



Foshan UAdental Medical Equipment Co.,Ltd

📍 Add: Building 2, South China International Medical Equipment Industry Center,
Shishan Town, Nanhai District, Foshan City, Guangdong Province, China

📞 Mob: +8613702756227

✉ Email: info@uadentech.com

📘 FB: Foshan UAdental

📷 Ins: foshanuadental

🌐 Web: www.uadentaltech.com

Foshan UAdental Medical Equipment Co.,Ltd

1. Swiss Brushless Motor

Precise torque and speed, fast response, more accurate treatment,

Powerful torque output up to **80N·cm**

Swing Amplitude is less than 20 μm



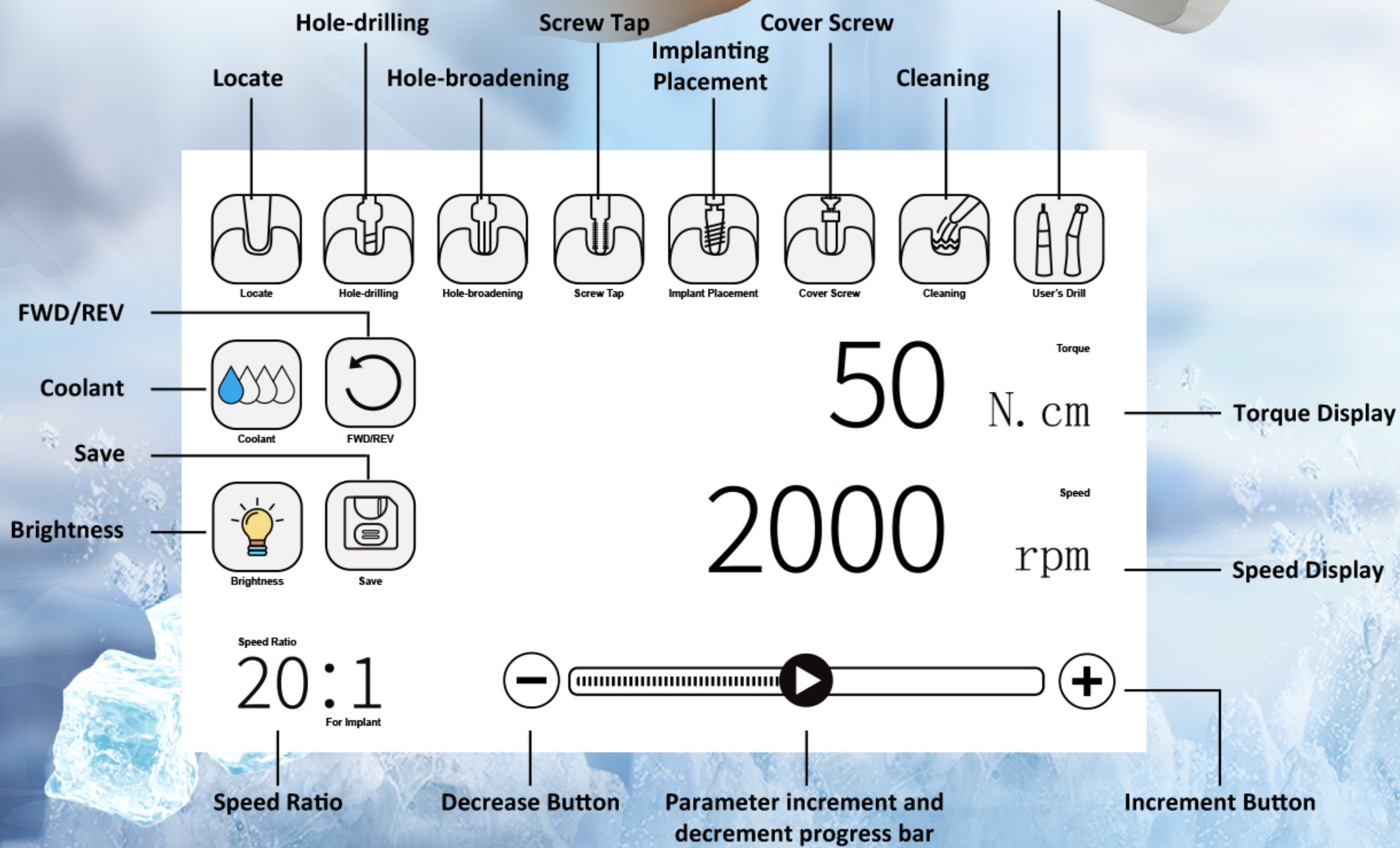
- 1 **HIGH TORQUE** | Strong power, smooth treatment
- 2 **QUICK RESPONSE** | Sensitive response, Smooth operation
- 3 **LOW NOISE** | Working quietly, comfortable treatment
- 4 **LONG SERVICE LIFE** | Minimal wear, longer service life

2. Exclusive **SUPER 8" LCD** Screen

• Visualisation • Touchable

• Sterilizable • Multi-mode

• Presetable surgical parameters: Enhances operational safety



3. LED Implant Contra Angle **20:1**

With UA implant contra angle, the whole implant machine has better performance, higher cost-effective.

- Imported bearings • Unique gear structure
- Detachable structure • Long service life
- Minimal oscillation



4. Custom Mode

Various clinical diagnosis and treatment in one machine
UA implant machine is not just an implant machine

- 1:5 For cutting
- 1:1 For polishing
- 16:1 For endo
- 20:1 For implant

5. Durable Handle Cable: Metal Connection

- Imported pipework
- Quick-fit durable metal connection
- Autoclavable: Both motor and cable can be sterilized



6. Peristaltic pump



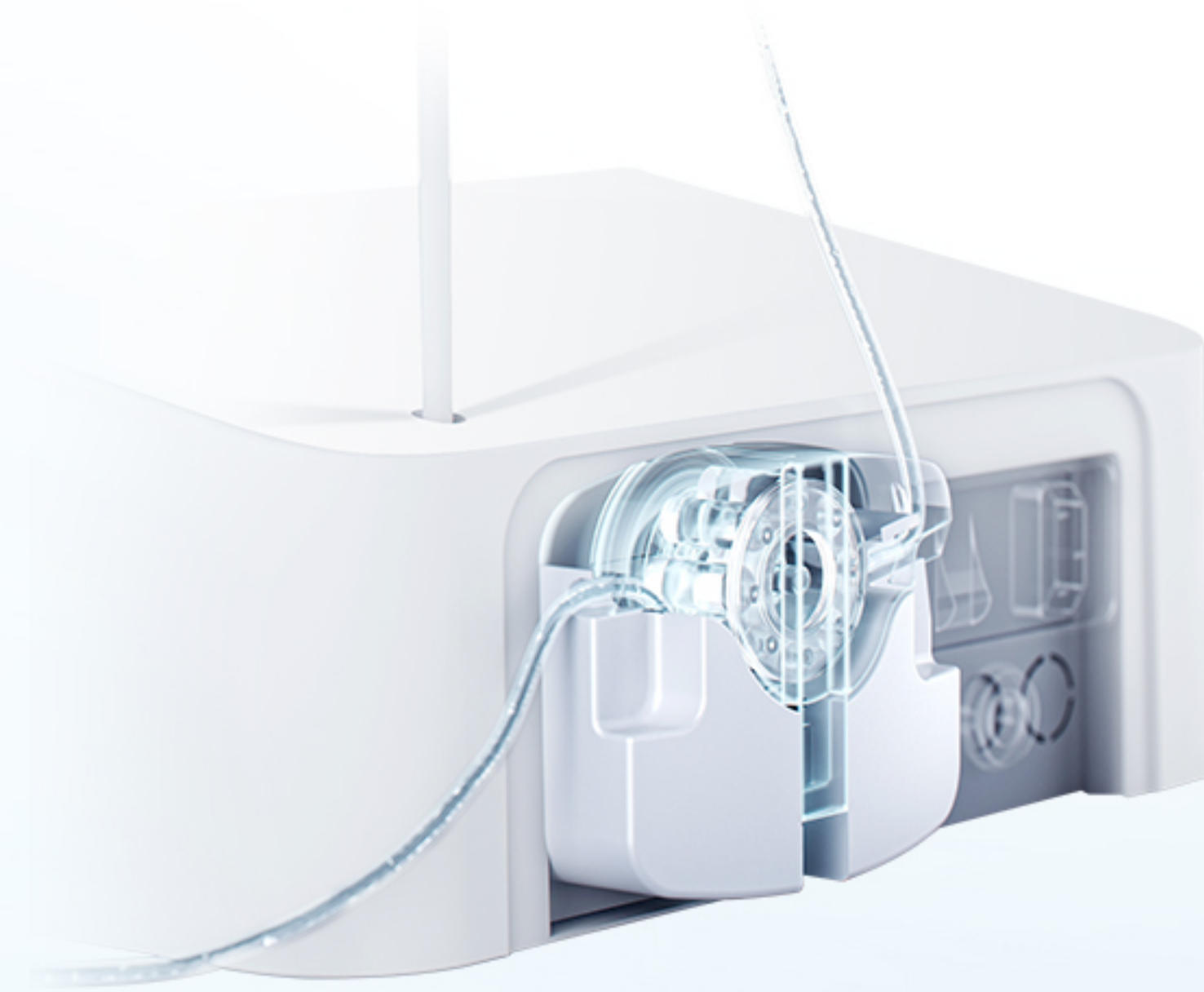
WATERPROOFING
Wipe clean, clean without scruples



MUTE PERISTALTIC PUMP
Noise level below 60dB



WATER PIPE REPLACEMENT
Convenient replacement, anti-Cross-Infection



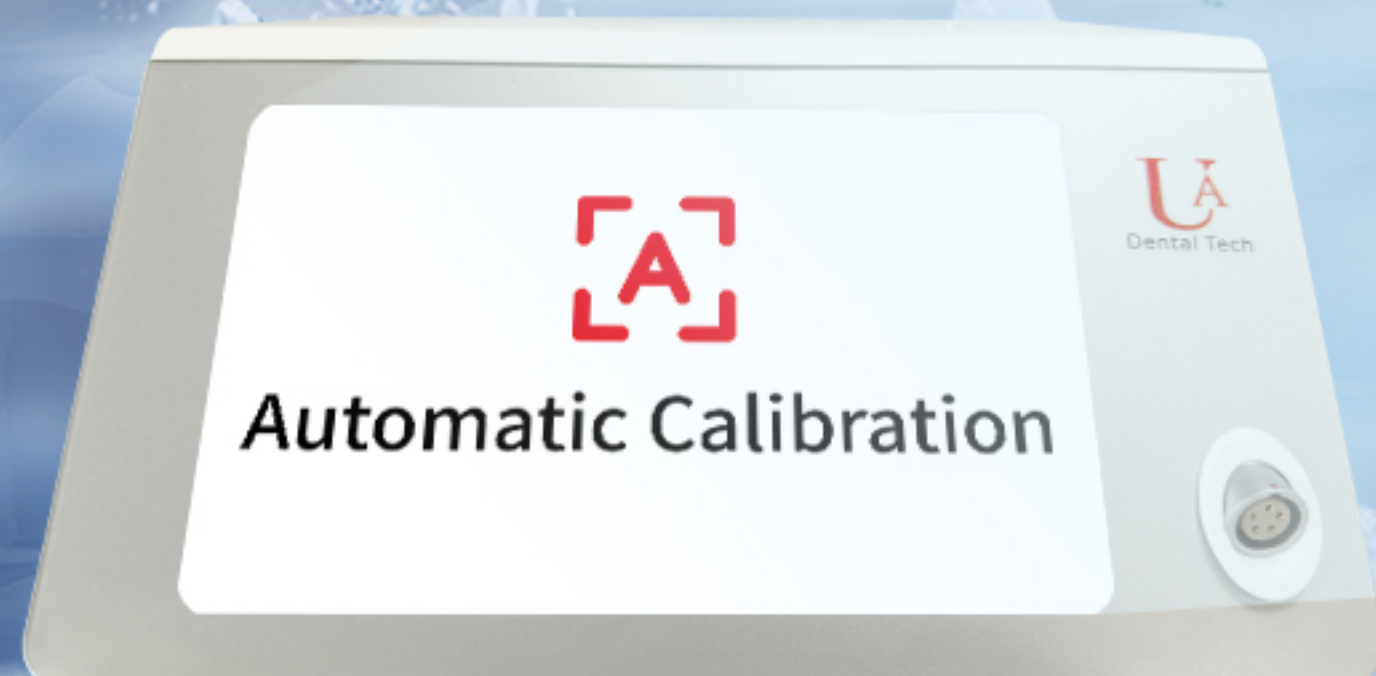
7. Multi-function Foot Pedal

Ininitely variable speed
Provides precise speed control, ensuring surgical safety

- Water volume control
- Program control
- Forward and reverse control

8. Automatic Calibration

- Calibration upon startup:
Ensures a safer surgical process



9. Smart Error Prompt !!!

- Guides users effectively

10. Three Years Warranty

- 3 Years For The Machine and 1 Year For the 20:1 Contra Angle

Product Fitting



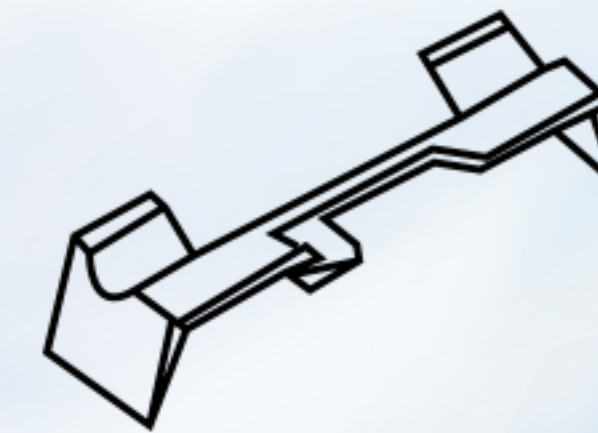
Implant Machine



20:1 Contra Angle



Support hook



Hangpiece Holder



Foot Pedal Switch



Motor With Cable



Foot Pedal Hook

Implant Motor Parameters

Product Name	UAIM-01
Rotation Speed Range	100-40,000 rpm
Torque Range/Gear20:1	5N·cm-80N·cm
Max Pump Output	110ml/min
Screen	Full Touch 8 Inch LCD
Motor Dimensions	φ23.3*88
Power Supply	AC90-230V 50/60Hz
Compatible	1:5,1:1,16:1,20:1
Program Modes	Positioning,Hole-drilling, Hole-broadening,Tapping, Implanting,Lock the abutment screw,Cleaning, User defined mode