

Example 4

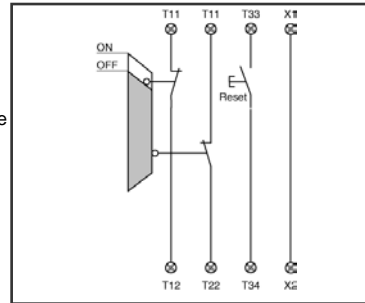
Dual-Channel Door Monitoring according to EN 1088 one limit switch with positive opening contact.

Wire breakage and earth leakage in the Door Monitoring circuits are detected.

Cross-shorts in the Door Monitoring circuits are not detected.

With external Reset button for increased safety requirements.

Safety category 3 or 4 in accordance with EN 954-1.



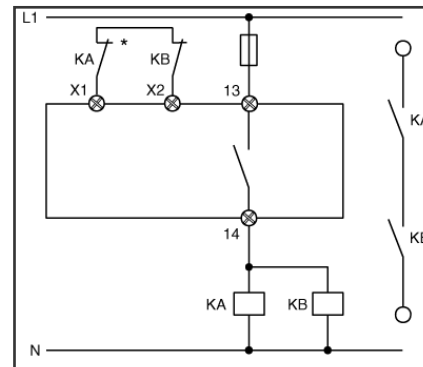
Output wiring examples

Example 5

Single-Channel output.

Suitable for contact reinforcement or contact multiplication, using relays or contactors with positively guided contacts.

*Feedback loop.

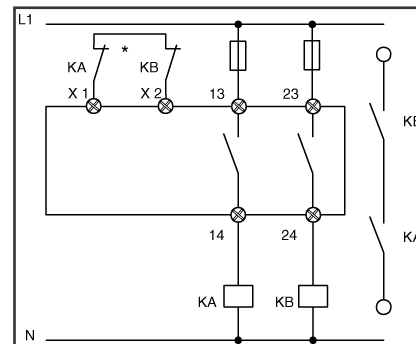


Example 6

Dual-Channel output.

Suitable for contact reinforcement or contact multiplication, using relays or contactors with positively guided contacts.

*Feedback loop.



Guard Door and Emergency-Stop Safety Controllers SRB-NA-R-C.33

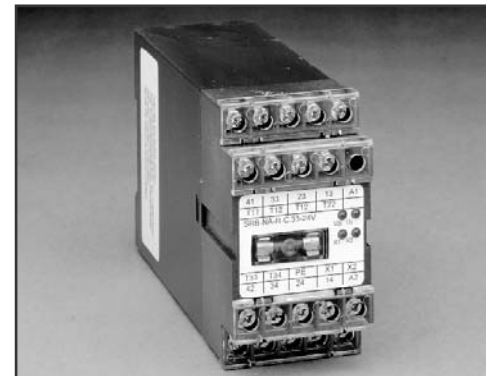
Installation Instructions

Safety Category (EN954-1): CC4

Features :

Stop Category (EN60204-1): 0

- 3 NO relay outputs, 1 NC auxiliary output (NC auxiliary contact for monitoring only, must not be used in safety enabled circuits)
- Input for reset
- Feedback loop
- Input for E-stop or door monitoring
- LED's for positive guided relay K1, K2 and power supply U_B and U_i
- Housing 45 mm, made of thermoplastic in accordance with UL-94-V-0, red RAL 3000
- DIN rail mounting, DIN EN 50 022-35
- **Not for use with BNS Series coded magnet switches**

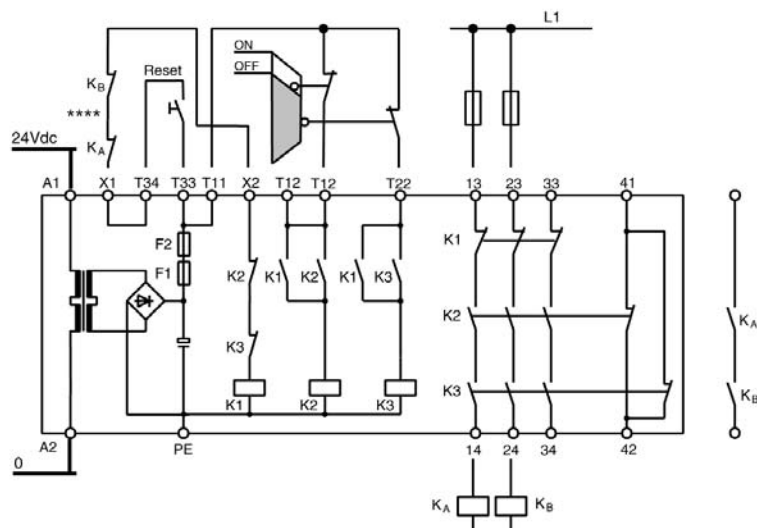


Model Designation	Enabling Outputs	Operating Voltage
SRB-NA-R-C.33-24V	3 NO / 1 NC	24VDC/VAC
SRB-NA-R-C.33-115VAC	3 NO / 1 NC	115VDC
SRB-NA-R-C.33-230VAC	3 NO / 1 NC	230VAC

SCHMERSAL
Technical Problems ? Questions ?
Our Engineering team is ready to help you.

100 Grassland Road Elmsford NY 10523 Phone 914 769 5006 - Fax 914 769 4169
 www.schmersalusa.com

Typical Wiring Diagram



Example for Dual Channel Door Monitoring using two limit switches (one with positive opening contacts) and external reset button.

Dual-channel output, suitable for contact reinforcement or contact multiplication, using relays or contactors with positively guided contacts.

**** = Feedback loop

Wiring breakage and earth leakage in the Monitoring circuits are detected.

Technical Data

Operating Voltage	24 VDC -15% / +20%, residual ripple max. 10%
Frequency	24 VAC, 48 VAC, 115 VAC, 230 VAC -15% / +6%
Fuse (Power Supply)	50/60 Hz (for AC operating)
Power Consumption	F2: T 0.25 A/250 (internal F1: TM 0.25 A/250V)
Switching Capacity (Enabling Contacts)	max. 2.5 VA
Fuse (Enabling Contacts)	230 VAC, 6 A resistive (inductive with suitable suppression)
Switching Capacity (Monitoring Contacts)	6 A slow blow
Fuse (Monitoring Contacts)	24V, 2 A resistive (inductive with suitable suppression)
Application Category	2 A slow blow
Pick-Up Delay	AC 15/DC 13, DIN VDE 0660 Part 200
Drop-Out Delay	≤ 20 ms
Contact Materials / Contacts	≤ 50 ms
Contact Resistance	AgSnO self cleaning, positively driven
Air and Creeping Distances	max. 100 mOhm when new
Connections	DIN VDE 0110 Part 1 and 2, 4 kV/2
Dimensions (H/W/D)	Self lifting terminals min. 0.5 qmm, max 2.5 qmm
Weight	83 mm / 45 mm / 140 mm
Ambient Operating Temperature	190 g (280g at 115 VAC and 230 VAC versions)
Mechanical Life	-25 °C ... +45 °C (derating curve available)
Terminal Labeling	10 ⁷ switching cycles
	DIN EN 50 005 / DIN 50 013

Input wiring examples

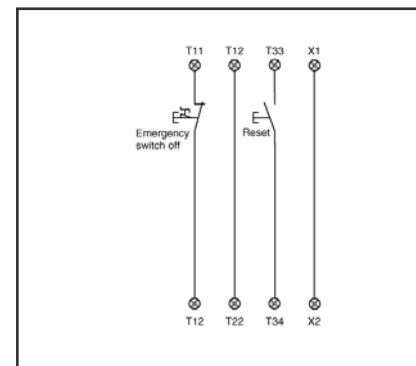
Example 1

Single-Channel Emergency Stop switch according to EN 60 204-1.

Wire breakage and earth leakage in the Emergency Stop circuits are detected.

With external Reset button.

Safety category 2 in accordance with EN 954-1.



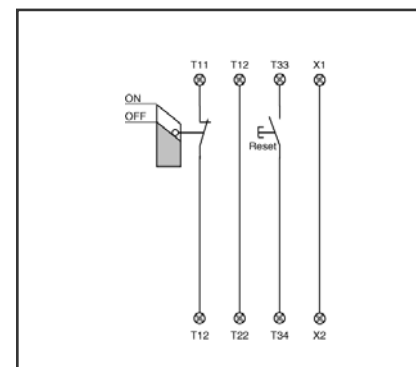
Example 2

Single-Channel Door Monitoring according to EN 1088 one limit switch with positive opening contact.

Wire breakage and earth leakage in the Door Monitoring circuits are detected.

With external Reset button for increased safety requirements.

Safety category 2 in accordance with EN 954-1.



Example 3

Dual-Channel Emergency Stop switch according to EN 60 204-1.

Wire breakage and earth leakage in the Emergency Stop circuits are detected.

Cross-shorts in the Emergency Stop circuits are not detected.

With external Reset button.

Safety category 3 or 4 in accordance with EN 954-1.

