

SUNSKY

SIMPLE AESTHETICS

.....

简单、自然、舒适
实用和美感的生活方式



规格

木皮 床头柜



Model: 2706
Size: 55*45*50



Model: 8195 三抽
Size: 50*50*47



Model: 8195 二抽
Size: 50*50*47



Model: 8195 胡桃
Size: 50*50*47



Model: 8122C
Size: 55*42*50



Model: 2710
Size: 50*40*48



Model: 2711
Size: 55*40*48



Model: 2688
Size: 45*45*52



Model: 8122B
Size: 55*42*50



Model: 8122 黑白
Size: 60*40*50



Model: 2652
Size: 49*49*50



Model: 2627
Size: 50*50*49

规格

木皮 床头柜



Model: 8101
Size: 50*40*48



Model: 2656 烟熏
Size: 59*42*51



Model: 2656 胡桃
Size: 59*42*51



Model: 2659
Size: 45*45*55



Model: 8176
Size: 50*50*52



Model: 8308
Size: 49*49*49



Model: 8199
Size: 52*40*52



Model: 2639
Size: 50*50*50



Model: 8193
Size: 58*44*56



Model: 8153
Size: 55*45*50



Model: 8172
Size: 50*40*46



Model: 8165 双抽
Size: 60*43*60

规格

木皮 床头柜



Model: 8165 单抽
Size: 60*43*60



Model: 8166
Size: 46.5*46.5*53



Model: 8167
Size: 50*50*45



Model: 8151
Size: 55*40*48



Model: 8169
Size: 50*45*50



Model: 8008A
Size: 50*50*49



Model: 8008-1
Size:



Model: 8035
Size: 55*45*50



Model: 8197
Size: 50*40*40



Model: 8185
Size: 55*40*45



Model: 8162-1
Size: 53*43*50



Model: 8180
Size: 50*40*46

规格

木皮 床头柜



Model: 8183
Size: 50*40*46



Model: 2623
Size: 50*40*46



Model: 8168
Size: 55*40*43



Model: 8123
Size: 55*40*46



Model: 2054
Size: 55*43*50



Model: 2053
Size: 55*40*43



Model: 8192
Size: 50*50*50



Model: G2021
Size: 61*45*53



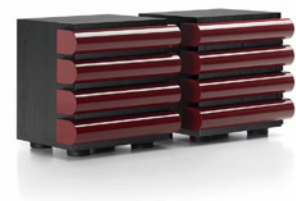
Model: G2125
Size: 55*42*50



Model: G2028
Size: 45*45*50



Model: G2122
Size: 50*50*43



Model: G2123
Size: 52*52*56

规格

木皮 床头柜



Model: G2022
Size: 55*45*45



Model: 2023
Size: 60*46*49



Model: 8170
Size: 53*43*50



Model: 2716
Size: 60*40*50



Model: 2701-1
Size: 60*45*50



Model: G2027
Size: 42*52



Model: 2026 烟熏色
Size: 45*45*50



Model: 2026 原木色
Size: 45*45*50



Model: 罗杰
Size: 70*48*37



Model: 8179
Size: 55*45*42



Model: 8153-1
Size: 55*45*51



Model: 2809
Size: 50*50*48

规格

马鞍皮 床头柜



Model: 2707
Size: 48*45*46



Model: 2708
Size: 55*42*48



Model: 2653-1
Size: 55*45*50



Model: 2687
Size: 61*46*55



Model: 2603
Size: 58*42*48



Model: 2709
Size: 48*48*53



Model: 2601
Size: 60*50*52



Model: 2602
Size: 55*45*58



Model: 2607
Size: 54*40*61



Model: 2608
Size: 50*50*51



Model: 2609
Size: 48*48*50



Model: 2610
Size: 52*43*52

规格

马鞍皮 床头柜



Model: 2617
Size: 45*45*48



Model: 2625
Size: 55*40*48



Model: 2622
Size: 48*48*50



Model: 2651
Size: 63*45*50



Model: 5022-1
Size: 56*47*47



Model: 2630
Size: 59*43*50



Model: 8161
Size: 58*42*45



Model: 8160A
Size: 55*42*47



Model: 8160B
Size: 55*42*47



Model: 8196 单抽
Size: 50*50*49



Model: 8196 三抽
Size: 50*50*49



Model: 8171
Size: 50*50*52

规格

马鞍皮 床头柜



Model: 8198
Size: 50*48*51



Model: 8162
Size: 50*40*50



Model: 8162—2
Size: 50*46*56



Model: 8189B
Size: 60*43*40



Model: 8189C
Size: 46*46*47



Model: 5085
Size: 50*47*50



Model: 8163
Size: 52*40*49



Model: 8190
Size: 45*45*50



Model: 2801
Size: 45*45*48



Model: 2689 马鞍皮
Size: 50*42*47



Model: 2605 马鞍皮
Size: 55*40*33



Model: 2665
Size: 52*42*50

规格

马鞍皮 床头柜



Model: 6012
Size: 60*45*47



Model: 2628 马鞍皮
Size: 55*42*43



Model: 2633 马鞍皮
Size: 49.5*42*49.5



Model: 2193 马鞍皮
Size: 60*42*52



Model: 8191
Size: 45*45*50



Model: 2668
Size: 60*46*48



Model: 2718
Size: 50*50*50



Model: 5011
Size: 50*40*50



Model: 猫爪凳
Size: 常规

规格

实色烤漆 床头柜



Model: 2631
Size: 55*42*42



Model: 2632
Size: 55*42*45



Model: 2701
Size: 55*45*50



Model: 2702
Size: 55*40*45



Model: 2703
Size: 550*460*420



Model: 2690
Size: 45*45*50



Model: 2098
Size: 50*45*41.5



Model: 2705
Size: 45*45*48



Model: 2653
Size: 55*45*50



Model: 2613
Size: 52*42*46



Model: 2626
Size: 60*42*53



Model: 2620
Size: 50*40*45

规格

实色烤漆 床头柜



Model: 2616
Size: 53*43*51



Model: 2655
Size: 55*40*49



Model: 2658
Size: 45*45*52



Model: 8178
Size: 45*45*50



Model: 8178 米白
Size: 45*45*45



Model: 8192 黑白
Size: 48*48*49



Model: 8210
Size: 60*42*50



Model: 8210 单抽
Size: 60*42*49



Model: 8192 全白
Size: 48*48*49



Model: 8137 米白
Size: 50*40*50



Model: 8131
Size: 50*40*48



Model: 8132
Size: 50*40*48

规格

实色烤漆 床头柜



Model: 2090
Size: 50*40*45



Model: 2091
Size: 50*40*48



Model: 8006
Size: 50*40*50



Model: 8168 米白
Size: 55*40*45



Model: 8105
Size: 50*40*48



Model: 8066
Size: 50*40*48



Model: 8036
Size: 55*40*41



Model: 8139 烟熏
Size: 50*40*48



Model: 8139 灰
Size: 50*40*48



Model: 2857
Size: 55*40*45



Model: 2862
Size: 45*40*48



Model: 2195
Size: 55*42*47

规格

实色烤漆 床头柜



Model: 2192
Size: 50*40*47



Model: 2882
Size: 50*45*48



Model: 2666
Size: 65*45*45



Model: 2166
Size: 60*45*47



Model: 8306
Size: 42*42*46



Model: 2165
Size: 60*43*48



Model: 2092
Size: 50*40*50



Model: 2120
Size: 55*42*46



Model: 2093
Size: 55*40*48



Model: 2712
Size: 55*40*38



Model: 8022
Size: 52*40*49



Model: 8106
Size: 50*40*46

SPECIFICATION

规格

SOLID COLOR PAINT BEDSIDE TABLE

实色烤漆 床头柜



Model: 2800A
Size: 45*48.5

SPECIFICATION

规格

DESK DRESSER

书桌 妆台



Model: 2132 妆台
Size: 1200*450*760



Model: 2133 妆台
Size: 1200-1500*450*750



Model: 2132 2133 妆凳
Size: 440*320*400



Model: 2145 妆台
Size: 110*45*75
Size: 50*45*75



Model: 2139 妆台
Size: 柜子 150*40*68.5
Size: 搭板 150*40*75



Model: 2160 妆台
Size: 柜子 150*42*68.5
Size: 搭板 140*42*75

规格

书桌 妆台



Model: 2135 妆台
Size: 柜子 1600*425*700
Size: 搭板 1500*425*750



Model: 2150 书桌
Size: 1800*600*750



Model: 2151
Size: 1800*760*730



Model: 2153
Size: 1400*60*75



Model: 2152
Size: 75*45*83/45*45*83



Model: 2136
Size: 160*46*75/150*45*80



Model: 2153
Size: 柜子 160*45*75
Size: 搭板 120*45*85



Model: 2155 梳妆台
Size: 柜子 100*45*73

规格

边柜 斗柜



Model: A8170 边柜
Size: 1500*460*850



Model: 8170 餐边柜
Size: 1800*460*850



Model: 8170 斗柜
Size: 900*460*1180



Model: 2135 六柜
Size: 1600*425*700



Model: 2135 四柜
Size: 800*425*900



Model: 2098 边柜
Size: 1800*550*632



Model: 2610 斗柜
Size: 800*420*850



Model: 8162 边柜
Size: 1600*450*720



Model: 8195 拼色斗柜
Size: 550*455*925

规格

边柜 斗柜



Model: 2706 斗柜
Size: 55*45*50



Model: 8162-5 边柜
Size: 1600*450*800



Model: 2653 边柜
Size: 120*45*75



Model: 8166 胡桃边柜
Size: 1700*450*800



Model: 2626 边柜
Size: 100*43.6*155

