

·All the pictures in this brochure are for reference only. The actual products shall be subject to those provided by LOVEMIKA system doors and windows.
·All copyrights and the right of final interpretation belong to LOVEMIKA system doors and windows.



30 years
1995-2025

Focus on system doors and windows

LOVEMIKA WARM FAMILY



The WeChat official
account of LOVEMIKA



whatsapp

Company Address: No. 126, Shenbei Road, Shenbei New District, Shenyang City, Liaoning Province
Service Hotline: 024-6785-7777
Mobile number: 86-13889342731
Email: mike@e-tfeng.com



Window

07-26

Door

27-34

Curtain wall

35-40

Sunroom

41-42

1

07-08

Aluminium Sliding Window

09-10

UPVC Sliding Window

11-12

LOVEMIKA 75 System window

13-14

LOVEMIKA C81 Inward opening window

15-16

LOVEMIKA 83X Inward-opening system window

17-18

LOVEMIKA 90 Push-out window

19-20

LOVEMIKA 92 Passive system windows

21-22

LOVEMIKA 100 Integrated window with screenand double inward-opening system

23-24

LOVEMIKA 115 Integrated system window withexternal opening and screen

25-26

LOVEMIKA 125 Double-layer passive type

2

27-28

LOVEMIKA 72 Folding door

29-30

LOVEMIKA 75 Window-style door

31-32

LOVEMIKA C91 Outward opening door

33-34

LOVEMIKA 125 Lifting sliding doors

3

35-36

LOVEMIKA Unitized curtain wal!

37-38

Introduction to Curtain Walls

39-40

Introduction to Curtain Walls

4

41-42

Sunroom LOVEMIKA 160

43-44

Cases in China and overseas

CONTENTS

ABOUT LOVEMIKA

The company was founded in

1995

It covers an area of approximately

70000m²

The annual production capacity of system doors and windows is approximately

500000m²/year

LOVEMIKA Doors and Windows was founded in 2015. Its predecessor was Liaoning Taifeng Aluminum Decoration Engineering Co., Ltd. Over the years, it has been focusing on the development of products such as doors and windows, curtain walls and sunrooms. Its production and processing base covers an area of 70,000 square meters, with an annual output of approximately 500,000 square meters per year. It is a comprehensive high-tech enterprise integrating product research and development, production, sales, installation and after-sales service.

LOVEMIKA



Won multiple certifications and honors from international and domestic institutions

Certificate of Honor

- The Luban Prize, the highest award in China's construction engineering
- Top 50 Enterprises in the National Building Curtain Wall Industry
- The Decoration Award for China's Construction Engineering
- Top 100 Enterprises in the National Building Decoration Industry
- The Decoration Award for Liaoning Province's Construction Engineering
- Top 10 Enterprises in Liaoning Province's Decoration and Renovation Industry
- Enterprises with Outstanding Contributions in China's Building Curtain Wall Industry over the Past Thirty Years
- The Science and Technology Innovation Achievement Award of Liaoning Province's Decoration and Renovation Industry



Qualification Certificate

- High-tech Enterprise
- AAA Quality and Credit Enterprise
- Environmental Management System Certification
- Quality Management System Certification
- Occupational Health and Safety Management System Certification
- Green Building Materials Product Certification
- Member of China Building Decoration Association
- Chinese Member of the European Window and Door Association



Corporate culture



Lovemika
Mission



Lovemika
Vision

The mission of LOVEMIKA

LOVEMIKA is committed to seeking happiness for its employees and strives to create a favorable working environment and development opportunities. Meanwhile, it wholeheartedly pursues value for its customers, meets their needs with professional quality and considerate services, and provides them with high-quality products and solutions. Moreover, LOVEMIKA actively contributes to the progress of mankind and society. It demonstrates corporate responsibility by fulfilling social responsibilities and promoting the development of the industry.

The vision of LOVEMIKA

"To become a high-quality enterprise with a history of a hundred years."
Keep innovating and keep pace with the times to cope with the changes and challenges in the market. Meanwhile, attach great importance to the inheritance and development of corporate culture, cultivate employees' loyalty and sense of belonging, and lay a solid foundation for the long-term development of the enterprise.

DEVELOPMENT COURSE

“Keep exploring tirelessly and strive to reach new heights”

It is believed that with the joint efforts of all the people of LOVEMIKA, Lewo will surely create even more glorious achievements in the new thirty years and bring more happiness and value to employees, customers and society.

1995

Liaoning Taifeng Aluminum Industry Decoration Engineering Co., Ltd. was established

1996

The first batch of equipment was introduced and the company officially started its operation

1999

Join the European Fenestration and Curtain Wall Association

2003

The Qingdao Haiyue Plaza Project and the Library Project of North China Electric Power University have won the "Luban Prize", the highest award in China's construction engineering

2004

The sales output value exceeded 100 million yuan for the first time

2007

Listed among the top 50 enterprises in the national building curtain wall industry. Independently developed the 65-series thermal-insulated aluminum alloy side-hung doors and windows system

2008

Rated among the top ten enterprises in the decoration and renovation industry of Liaoning Province

2013

The sales output value exceeded 500 million yuan for the first time. It was awarded the title of "National High-tech Enterprise"

2015

Create the LOVEMIKA brand

2016

Once again awarded the title of "National High-tech Enterprise".

2018

The scientific research project on the company's intelligent, energy-saving, environmentally friendly and ecological doors and windows was listed in the "Shenyang Future Emerging Industry Technology Research and Development Plan"

2019

Participate in the formulation of the "Technical Specification for Civil Building Doors and Windows" of the Department of Housing and Urban-Rural Development of Liaoning Province

2020

The company has successfully developed the 83-series and 92-series passive doors and windows. It was once again awarded the title of "National High-tech Enterprise"

2022

Provincial service-oriented demonstration enterprise. Passed the green building materials product certification

2023

Benchmark Enterprise for Lean Management in Liaoning Province

2024

The Red Circle ERP was launched, and the intelligent production line was also put into operation. The enterprise has successfully transformed towards digitalization and intelligence.

LOVEMIKA

Manufacturing strength

“Sharpen your tools before you start your work”

Over the past 30 years, the enterprise has continuously introduced and updated high-end equipment and advanced technologies from Germany, Italy and other countries. It has also selected high-quality raw materials worldwide and has always been committed to the research, development, design, manufacturing and sales of high-quality energy-efficient doors and windows products. Relying on more than a hundred patented technologies, it has independently developed multiple series of energy-efficient doors and windows products applicable to passive buildings.



Integrate the global supply chain Escort high-quality doors and windows



SIEGENIA of Germany



elumatec



Hopo handle from Shenzhen



Technoform thermal break strips from Germany



ROTO Hardware from Germany



elusoft



GEZE door closers from Germany



Akzo powder from the Netherlands



Sobinco hardware from Belgium



Giesse hardware from Italy



HOPPE handles from Germany



Jiangyin Haida rubber strips

Our Clients



Mercedes-Benz



KERRY PROPERTIES



vanke



Aluminium Sliding Window

PRODUCT CONFIGURATION

- ① Profile: Ultra-high precision aluminum material with a wall thickness ranging from 1.8mm to 4.0mm
- ② Frame thickness: 81mm
- ③ Surface treatment: Electrostatic powder spraying by AkzoNobel
- ④ Hardware: Stainless steel bearing rollers, Multi-point locks and Stainless steel tracks
- ⑤ Sealing strip: EPDM automotive-grade sealing strip (with a rubber content of 30%)
- ⑥ Glass: 5GLow-E+14Ar+5G / 5GLow-E+12Ar+5G+12Ar+5G
- ⑦ Opening methods: Sliding



PRODUCT COLOR

- Exterior color**
- LOVEMIKA CAFÉ
 - BERLIN GRAY
 - TURQUOISE
 - ENAMEL WHITE
- Interior color**
- LOVEMIKA CAFÉ
 - BERLIN GRAY
 - LIGHT BLUE AND WHITE
 - ENAMEL WHITE
 - CANNES BROWN
 - CHAMPAGNE GOLD
 - STARLIGHT GRAY
 - CRYSTAL BLACK



UPVC Sliding Window

PRODUCT CONFIGURATION

- ① Profile: Ultra-high precision UPVC material with a wall thickness ranging from 2.5mm to 3.0mm
- ② Frame thickness: 81mm
- ③ Hardware: Stainless steel bearing rollers, Multi-point locks and Stainless steel tracks
- ④ Steel reinforcement: Galvanized steel plate(thickness 1.2~2.0mm), enhances wind pressure resistance
- ⑤ Sealing strip: EPDM automotive-grade sealing strip (with a rubber content of 30%)
- ⑥ Glass: 5GLow-E+14Ar+5G / 5GLow-E+12Ar+5G+12Ar+5G
- ⑦ Opening methods: Sliding



PRODUCT COLOR

Exterior color

LOVEMIKA CAFÉ

BERLIN GRAY

TURQUOISE

ENAMEL WHITE

Interior color

LOVEMIKA CAFÉ

BERLIN GRAY

LIGHT BLUE AND WHITE

ENAMEL WHITE

CANNES BROWN

CHAMPAGNE GOLD

STARLIGHT GRAY

CRYSTAL BLACK



Sliding doors are also available

LOVEMIKA 75 Outward opening window

PRODUCT CONFIGURATION

- ① Profile: Ultra-high precision aluminum material with a wall thickness ranging from 1.8mm to 4.0mm
- ② Frame thickness: 75mm; Sash thickness: 85mm
- ③ Surface treatment: Electrostatic powder spraying by AkzoNobel
- ④ Hardware: Customized hidden hardware with a load-bearing capacity of 100kg + handle
- ⑤ Thermal break strip: 39mm, high-quality PA66GF25 thermal break strip
- ⑥ Sealing strip: EPDM automotive-grade sealing strip (with a rubber content of 30%)
- ⑦ Glass: 5GLow-E+14Ar+5G/5GLow-E+14Ar+5G+14Ar+5GLow-E
- ⑧ Opening method: Outward side-hung opening



PRODUCT COLOR

Exterior color

LOVEMIKA CAFÉ

BERLIN GRAY

TURQUOISE

ENAMEL WHITE

Interior color

LOVEMIKA CAFÉ

BERLIN GRAY

LIGHT BLUE AND WHITE

ENAMEL WHITE

CANNES BROWN

CHAMPAGNE GOLD

STARLIGHT GRAY

CRYSTAL BLACK

Window

LOVEMIKA 75

Outward opening window



LOVEMIKA C81 Inward opening window

PRODUCT CONFIGURATION

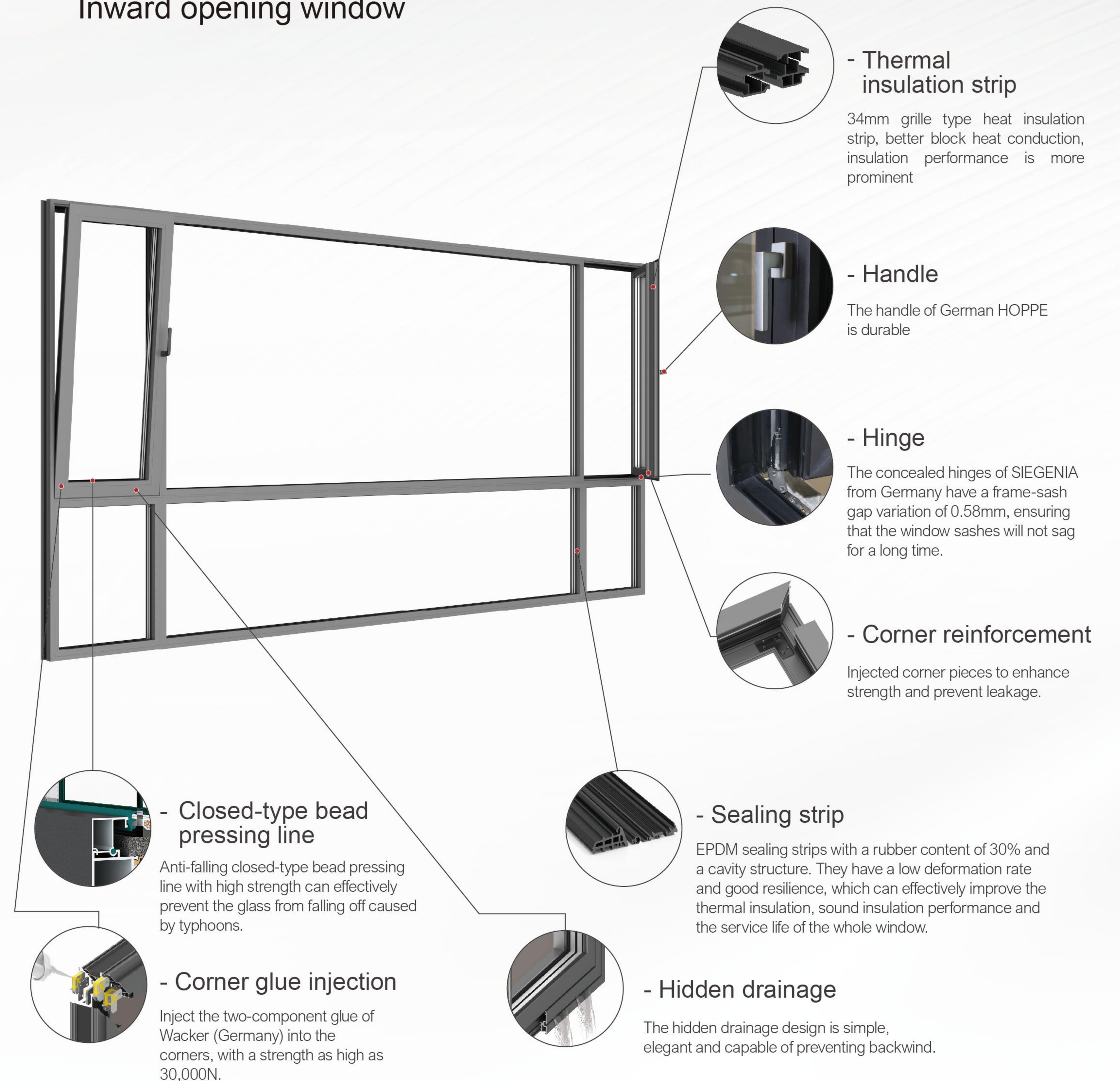
- ① Profile: Ultra-high precision aluminum, wall thickness 1.8mm
- ② Frame thickness: 81mm; Sash thickness: 81mm
- ③ Surface treatment: Akzonobel electrostatic powder coating
- ④ Hardware: Custom hidden hardware + children's lock handle
- ⑤ Thermal break strip: 34mm, PA66GF25 high quality thermal break strip
- ⑥ Sealing rubber strip: EPDM automotive grade rubber strip (rubber content 30%)
- ⑦ Glass: 5GLow-E+12Ar+5G+12Ar+5G
- ⑧ Opening mode: Inward casement opening and inward tilt and turn opening



PRODUCT COLOR

- Exterior color**
- LOVEMIKA CAFÉ
 - BERLIN GRAY
 - TURQUOISE
 - ENAMEL WHITE
- Interior color**
- LOVEMIKA CAFÉ
 - BERLIN GRAY
 - LIGHT BLUE AND WHITE
 - ENAMEL WHITE
 - CANNES BROWN
 - CHAMPAGNE GOLD
 - STARLIGHT GRAY
 - CRYSTAL BLACK

LOVEMIKA C81 Inward opening window



LOVEMIKA 83X Inward-opening system window

PRODUCT CONFIGURATION

- ① Profile: Ultra-high precision aluminum material with a wall thickness of 1.8mm
- ② Frame thickness: 83mm; Sash thickness: 83mm
- ③ Surface treatment: Electrostatic powder spraying by AkzoNobel
- ④ Hardware: Customized concealed hardware with a load-bearing capacity of 100kg + handle
- ⑤ Thermal insulation strip: 34mm, high-quality PA66GF25 thermal insulation strip
- ⑥ Sealing strip: Ethylene propylene diene monomer (EPDM) automotive-grade sealing strip (with a rubber content of 30%)
- ⑦ Glass: 5GLow-E+14Ar+5G/5GLow-E+12Ar+5G+12Ar+5G
- ⑧ Opening methods: Inward casement opening, inward tilt and turn opening, and micro-ventilation



PRODUCT COLOR

Exterior color

LOVEMIKA CAFÉ

BERLIN GRAY

TURQUOISE

ENAMEL WHITE

Interior color

LOVEMIKA CAFÉ

BERLIN GRAY

LIGHT BLUE AND WHITE

ENAMEL WHITE

CANNES BROWN

CHAMPAGNE GOLD

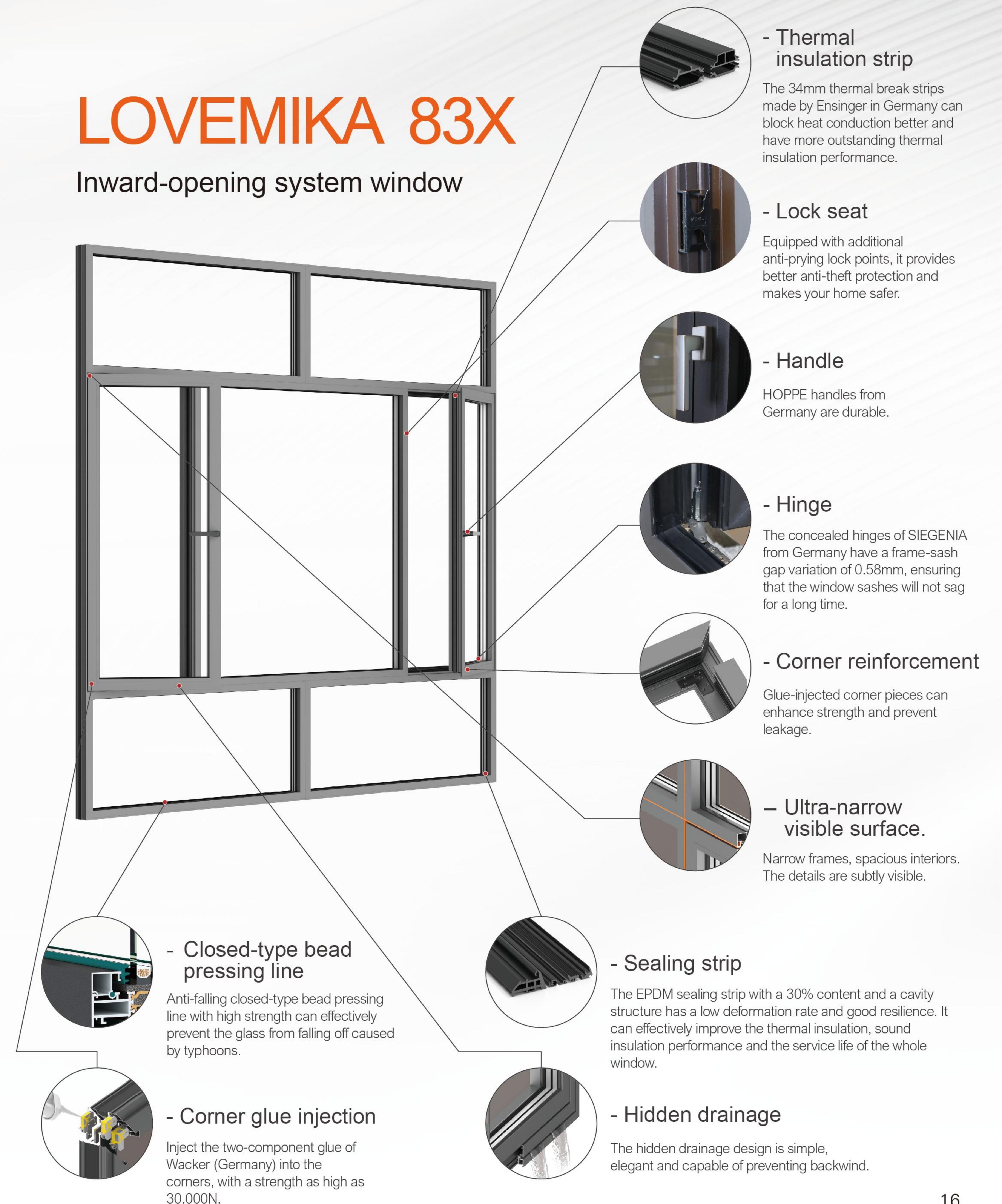
STARLIGHT GRAY

CRYSTAL BLACK

Window

LOVEMIKA 83X

Inward-opening system window



LOVEMIKA 90 Push-out window

PRODUCT CONFIGURATION

- ① Profiles: Ultra-high precision aluminum materials, with a wall thickness of 1.8mm
- ② Frame thickness: 90mm; Sash thickness: 90mm
- ③ Surface treatment: AkzoNobel electrostatic powder spraying
- ④ Hardware: Deeply customized concealed hardware + handles
- ⑤ Thermal break strips: 24mm, high-quality PA66GF25 thermal break strips
- ⑥ Sealing strips: EPDM (ethylene propylene diene monomer) automotive-grade sealing strips (with a rubber content of 30%)
- ⑦ Glass: 5GLow-E + 12Ar + 5G + 12Ar + 5G / 5GLow-E + 9Ar + 5G + 9Ar + 5G
- ⑧ Opening methods: Curtain wall horizontal sliding windows, single horizontal sliding windows, electric horizontal sliding windows



PRODUCT COLOR

Exterior color

LOVEMIKA CAFÉ

BERLIN GRAY

TURQUOISE

ENAMEL WHITE

Interior color

LOVEMIKA CAFÉ

BERLIN GRAY

LIGHT BLUE AND WHITE

ENAMEL WHITE

CANNES BROWN

CHAMPAGNE GOLD

STARLIGHT GRAY

CRYSTAL BLACK

LOVEMIKA 90

Push-out window



LOVEMIKA 92

Passive system windows

PRODUCT CONFIGURATION

- ① Profiles: Ultra-high precision aluminum materials with a wall thickness of 1.8mm
- ② Frame thickness: 92mm; Sash thickness: 102mm
- ③ Surface treatment: AkzoNobel electrostatic powder coating
- ④ Hardware: Customized hidden hardware with a load-bearing capacity of 100kg + handle
- ⑤ Thermal insulation strips: 54mm, high-quality PA66GF25 thermal insulation strips
- ⑥ Sealing strips: EPDM automotive-grade sealing strips (with a rubber content of 30%)
- ⑦ Glass: 5GLow-E + 12Ar + 5G + 12Ar + 5G + 12Ar + 5G warm-edge argon gas
- ⑧ Opening methods: Inward casement opening, inward tilting and turning opening, electric opening



PRODUCT COLOR

Exterior color

LOVEMIKA CAFÉ

BERLIN GRAY

TURQUOISE

ENAMEL WHITE

Interior color

LOVEMIKA CAFÉ

BERLIN GRAY

LIGHT BLUE AND WHITE

ENAMEL WHITE

CANNES BROWN

CHAMPAGNE GOLD

STARLIGHT GRAY

CRYSTAL BLACK

LOVEMIKA 92

Passive system windows



LOVEMIKA 100

Integrated window with screen and double inward-opening system

PRODUCT CONFIGURATION

- ① Profile: Ultra-high precision aluminum material with a wall thickness of 1.8mm
- ② Frame thickness: 100mm; Sash thickness: 77mm
- ③ Surface treatment: Electrostatic powder spraying by AkzoNobel
- ④ Hardware: Customized concealed hardware with a load-bearing capacity of 100kg + handle
- ⑤ Thermal insulation strip: 35.3mm, high-quality PA66GF25 thermal insulation strip
- ⑥ Sealing strip: Ethylene propylene diene monomer (EPDM) automotive-grade sealing strip (with a rubber content of 30%)
- ⑦ Glass: 5GLow-E+14Ar+5G/5GLow-E+12Ar+5G+12Ar+5G
- ⑧ Opening methods: Inward casement opening and inward tilt and turn opening



PRODUCT COLOR

Exterior color

LOVEMIKA CAFÉ

BERLIN GRAY

TURQUOISE

ENAMEL WHITE

Interior color

LOVEMIKA CAFÉ

BERLIN GRAY

LIGHT BLUE AND WHITE

ENAMEL WHITE

CANNES BROWN

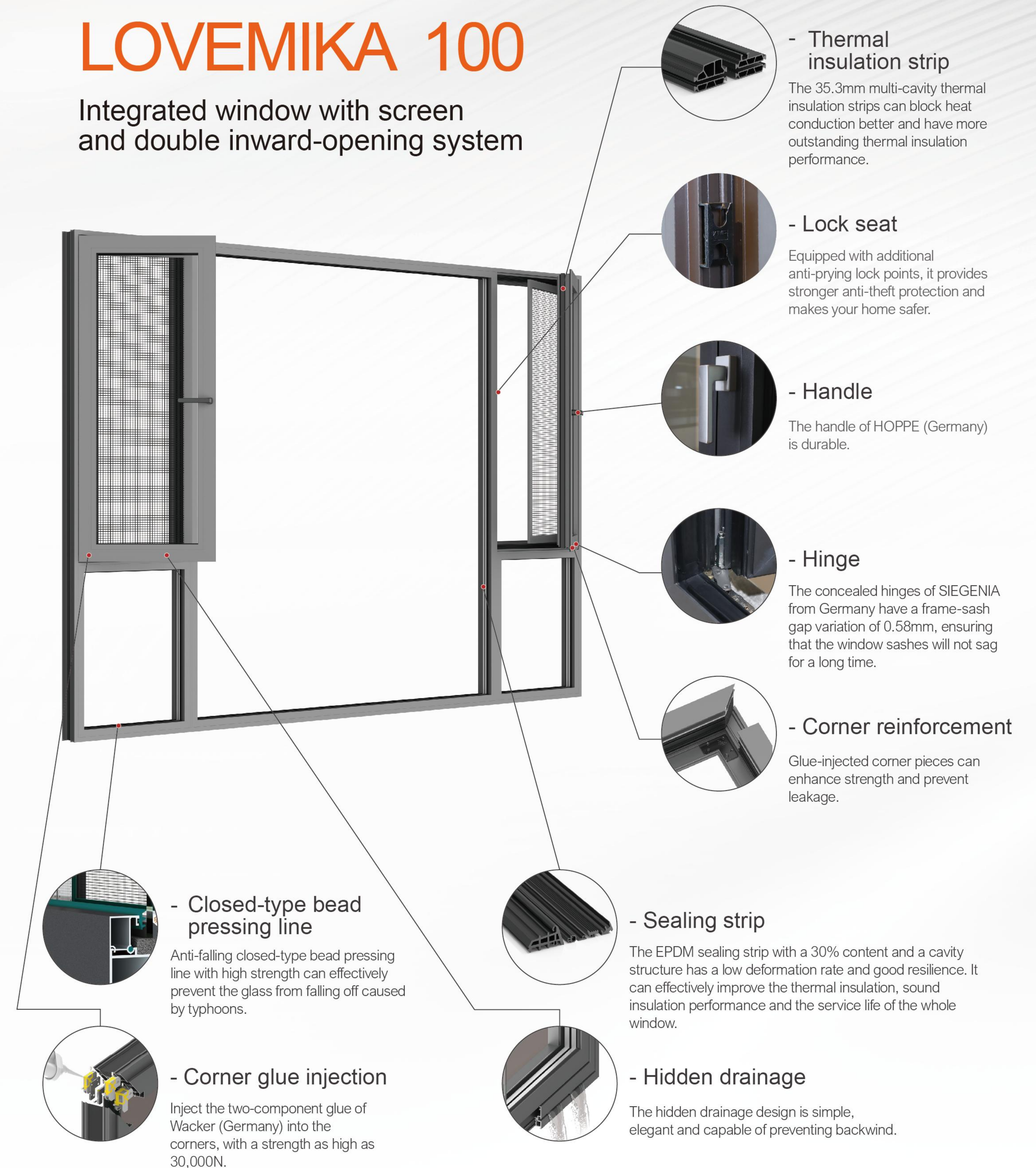
CHAMPAGNE GOLD

STARLIGHT GRAY

CRYSTAL BLACK

LOVEMIKA 100

Integrated window with screen and double inward-opening system



LOVEMIKA 115

Integrated system window with external opening and screen

PRODUCT CONFIGURATION

- ① Profile: Ultra-high precision aluminum material with a wall thickness of 1.8mm
- ② Frame thickness: 115mm; Sash thickness: 74mm
- ③ Surface treatment: Electrostatic powder coating by AkzoNobel
- ④ Hardware: Deeply customized concealed hardware + handle
- ⑤ Thermal insulation strip: 30mm, high-quality PA66GF25 thermal insulation strip
- ⑥ Sealing strip: EPDM (ethylene propylene diene monomer) automotive-grade sealing strip (with a rubber content of 30%)
- ⑦ Glass: 5GLow-E+14Ar+5G/5GLow-E+12Ar+5G+12Ar+5G
- ⑧ Opening method: Outward casement opening and outward tilting window



PRODUCT COLOR

Exterior color

LOVEMIKA CAFÉ

BERLIN GRAY

TURQUOISE

ENAMEL WHITE

Interior color

LOVEMIKA CAFÉ

BERLIN GRAY

LIGHT BLUE AND WHITE

ENAMEL WHITE

CANNES BROWN

CHAMPAGNE GOLD

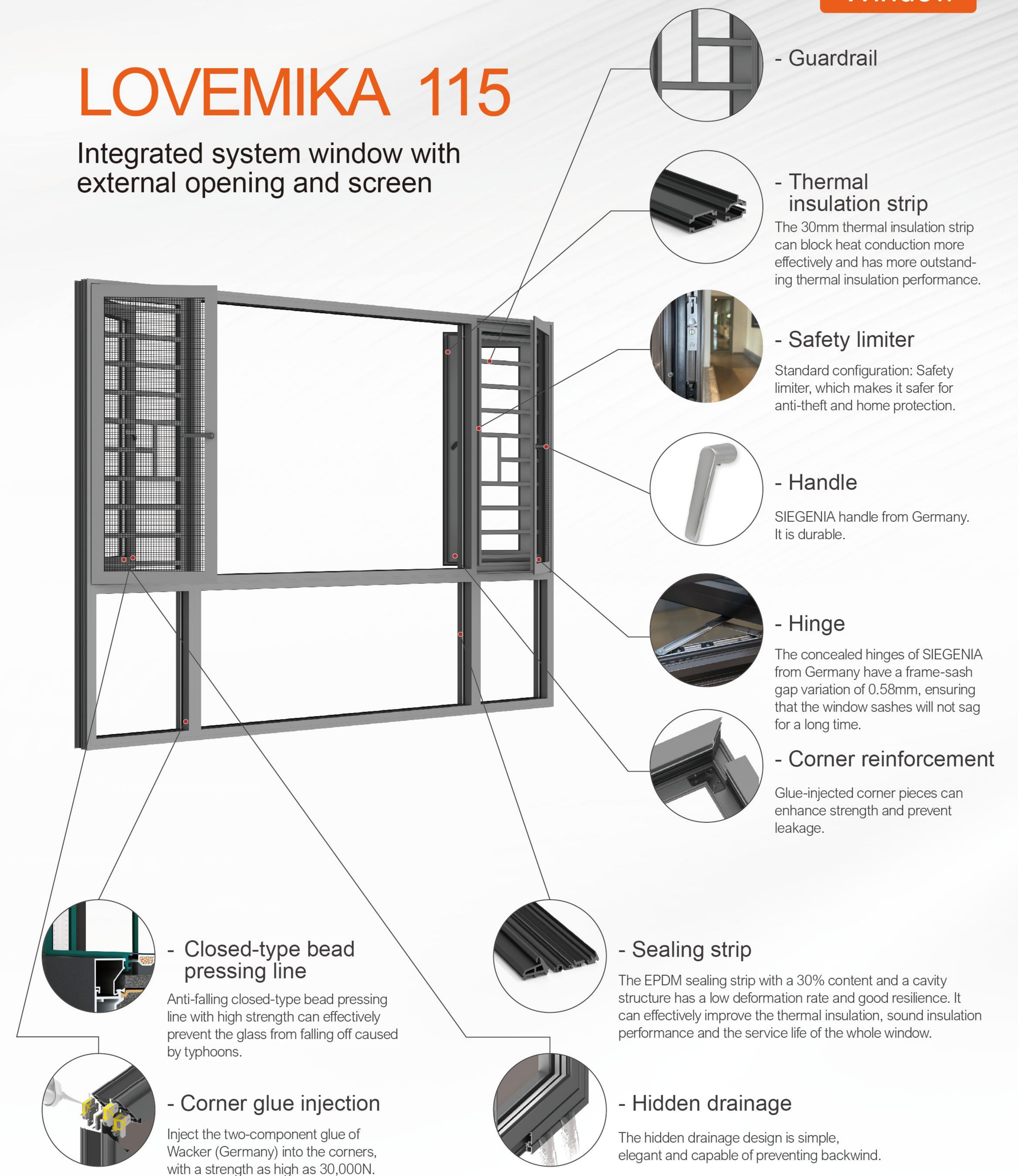
STARLIGHT GRAY

CRYSTAL BLACK

Window

LOVEMIKA 115

Integrated system window with external opening and screen



LOVEMIKA 125 Double-layer passive type

PRODUCT CONFIGURATION

- ① Profiles: Ultra-high precision aluminum materials with a wall thickness of 1.8mm
- ② Frame thickness: 125mm; Sash thickness: The inner sash is 99mm and the outer sash is 27mm
- ③ Surface treatment: AkzoNobel electrostatic powder spraying
- ④ Hardware: Customized hidden hardware with a load-bearing capacity of 100kg + handles
- ⑤ Thermal break strips: 42mm & 20mm; high-quality PA66GF25 thermal break strips
- ⑥ Sealing strips: EPDM (ethylene propylene diene monomer) automotive-grade sealing strips (with a rubber content of 30%)
- ⑦ Glass: For the inner glass, it is 5GLow-E +15Ar+5G+15Ar+5G; for the outer glass, it is 5GLow-E+Pvb0.76+5G
- ⑧ Opening method: Inward side-hung opening and inward tilt-and-turn opening



PRODUCT COLOR

Exterior color

LOVEMIKA CAFÉ

BERLIN GRAY

TURQUOISE

ENAMEL WHITE

Interior color

LOVEMIKA CAFÉ

BERLIN GRAY

LIGHT BLUE AND WHITE

ENAMEL WHITE

CANNES BROWN

CHAMPAGNE GOLD

STARLIGHT GRAY

CRYSTAL BLACK

LOVEMIKA 125

Double-layer passive type



LOVEMIKA 72 Folding door

PRODUCT CONFIGURATION

- ① Profiles: Ultra-high precision aluminum materials with a wall thickness of 2.2mm
- ② Frame thickness: 72mm; Sash thickness: 82mm
- ③ Surface treatment: AkzoNobel electrostatic powder spraying
- ④ Hardware: Customized hardware + handles
- ⑤ Thermal break strips: 28mm, high-quality PA66GF25 thermal break strips
- ⑥ Sealing strips: EPDM (ethylene propylene diene monomer) automotive-grade sealing strips (with a rubber content of 30%)
- ⑦ Glass: 6GLow-E+12Ar+6G
- ⑧ Opening method: Outward opening door



PRODUCT COLOR

Exterior color

LOVEMIKA CAFÉ

BERLIN GRAY

TURQUOISE

ENAMEL WHITE

Interior color

LOVEMIKA CAFÉ

BERLIN GRAY

LIGHT BLUE AND WHITE

ENAMEL WHITE

CANNES BROWN

CHAMPAGNE GOLD

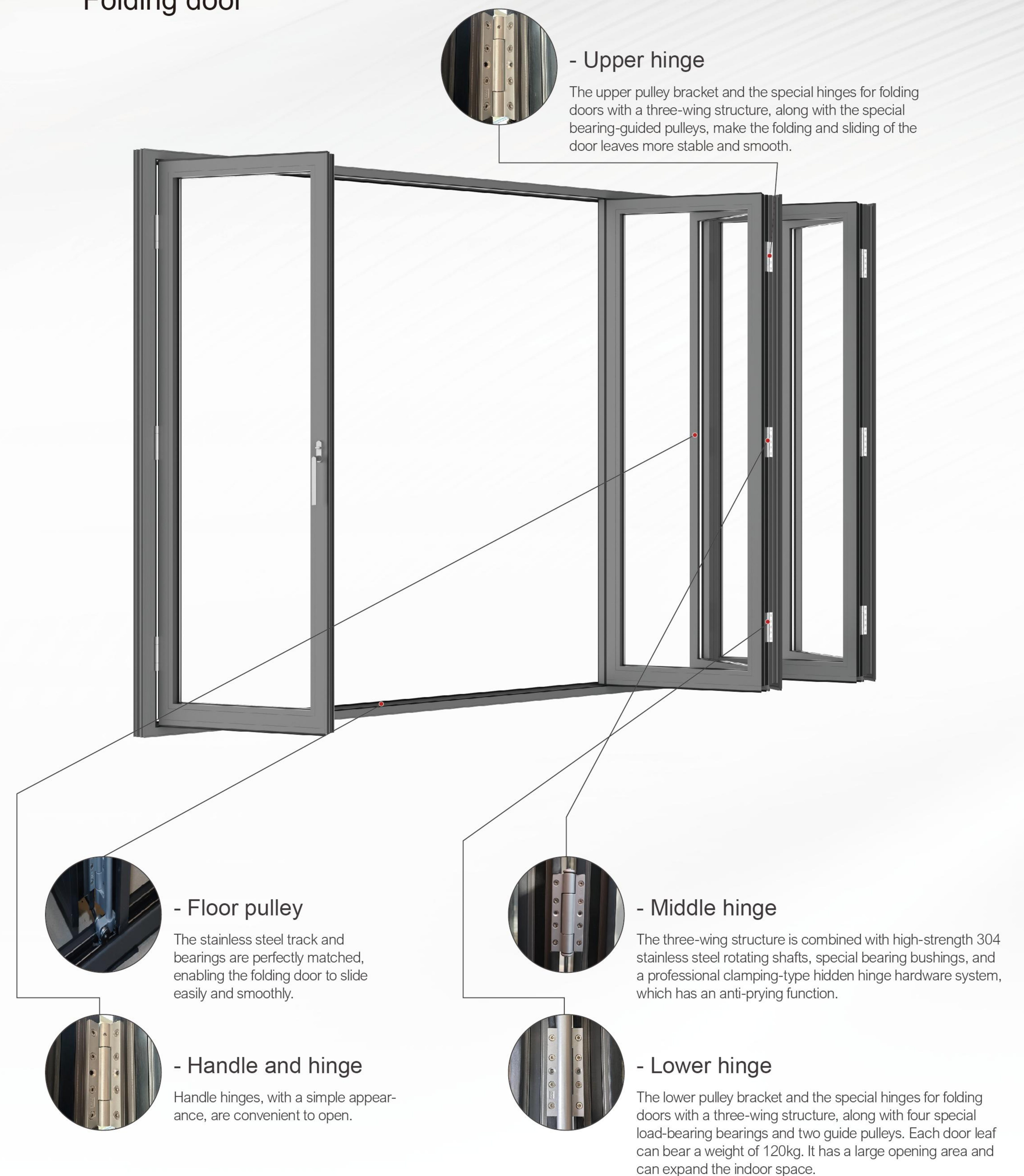
STARLIGHT GRAY

CRYSTAL BLACK

LOVEMIKA 72

Folding door

Door



LOVEMIKA 75 Window-style door

PRODUCT CONFIGURATION

- ① Profile: Ultra-high precision aluminum material with a wall thickness ranging from 1.8mm to 4.0mm
- ② Frame thickness: 75mm; Sash thickness: 85mm
- ③ Surface treatment: Electrostatic powder spraying by AkzoNobel
- ④ Hardware: Customized hidden hardware with a load-bearing capacity of 100kg + handle
- ⑤ Thermal break strip: 39mm, high-quality PA66GF25 thermal break strip
- ⑥ Sealing strip: EPDM automotive-grade sealing strip (with a rubber content of 30%)
- ⑦ Glass: 5GLow-E+14Ar+5G/5GLow-E+14Ar+5G+14Ar+5GLow-E
- ⑧ Opening method: Window-style door



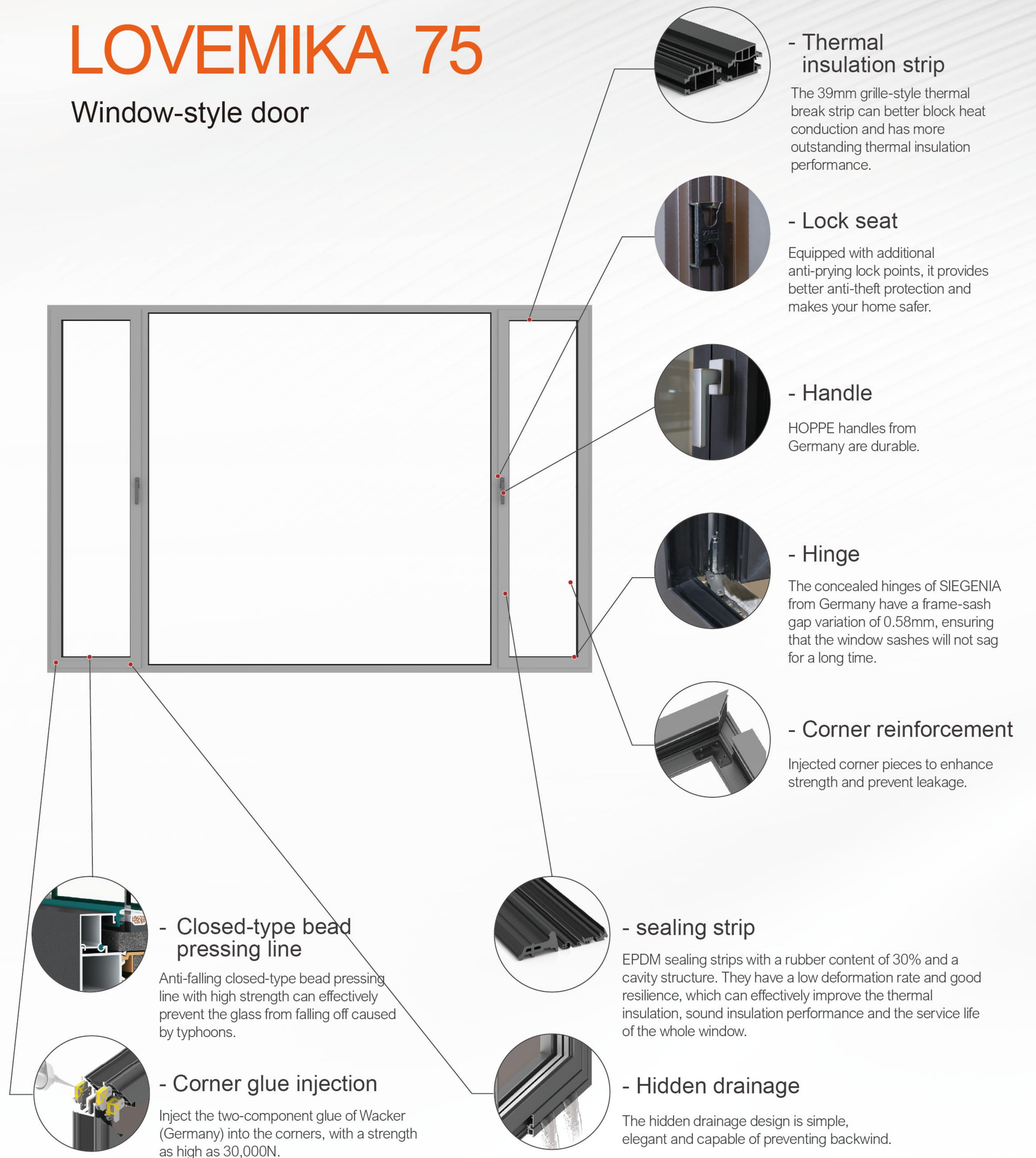
PRODUCT COLOR

- Exterior color**
- LOVEMIKA CAFÉ
 - BERLIN GRAY
 - TURQUOISE
 - ENAMEL WHITE
- Interior color**
- LOVEMIKA CAFÉ
 - BERLIN GRAY
 - LIGHT BLUE AND WHITE
 - ENAMEL WHITE
 - CANNES BROWN
 - CHAMPAGNE GOLD
 - STARLIGHT GRAY
 - CRYSTAL BLACK

LOVEMIKA 75

Window-style door

Door



LOVEMIKA C91 Outward opening door

PRODUCT CONFIGURATION

- ① Profile: Ultra-high precision aluminum, wall thickness 2.2mm
- ② Frame thickness: 89mm; Sash thickness: 99mm
- ③ Surface treatment: Akzonobel electrostatic powder coating
- ④ Hardware: Custom hardware + handle
- ⑤ Thermal break strip: 45.3mm, PA66GF25 high quality thermal break strip
- ⑥ Sealing rubber strip: EPDM automotive grade rubber strip (rubber content 30%)
- ⑦ Glass: 5GLow-E+14A+5G+14A+5G
- ⑧ Opening method: Outward casement opening



PRODUCT COLOR

- Exterior color**
- LOVEMIKA CAFÉ
 - BERLIN GRAY
 - TURQUOISE
 - ENAMEL WHITE
- Interior color**
- LOVEMIKA CAFÉ
 - BERLIN GRAY
 - LIGHT BLUE AND WHITE
 - ENAMEL WHITE
 - CANNES BROWN
 - CHAMPAGNE GOLD
 - STARLIGHT GRAY
 - CRYSTAL BLACK

LOVEMIKA C91

Outward opening door



LOVEMIKA 125

Lifting sliding doors

PRODUCT CONFIGURATION

- ① Profiles: Ultra-high precision aluminum materials, with a wall thickness of 2.25mm
- ② Frame thickness: 125mm; Sash thickness: 55mm
- ③ Surface treatment: AkzoNobel electrostatic powder spraying
- ④ Hardware: Customized hardware
- ⑤ Thermal break strips: 34mm, high-quality PA66GF25 thermal break strips
- ⑥ Sealing strips: EPDM (ethylene propylene diene monomer) automotive-grade sealing strips (with a rubber content of 30%)
- ⑦ Glass: 5GLow-E + 12Ar + 5G
- ⑧ Opening method: Lifting and sliding



PRODUCT COLOR

Exterior color

LOVEMIKA CAFÉ

BERLIN GRAY

TURQUOISE

ENAMEL WHITE

Interior color

LOVEMIKA CAFÉ

BERLIN GRAY

LIGHT BLUE AND WHITE

ENAMEL WHITE

CANNES BROWN

CHAMPAGNE GOLD

STARLIGHT GRAY

CRYSTAL BLACK

LOVEMIKA 125

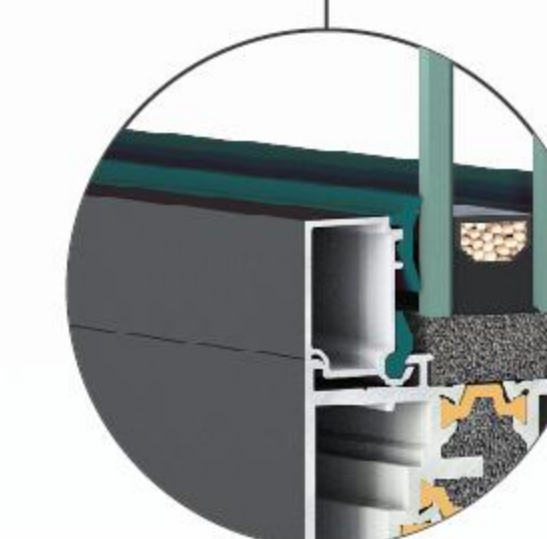
Lifting sliding doors

Door



- Floor pulley

It has extremely strong corrosion resistance and self-cleaning properties. With a fine and smooth surface, it enables smoother sliding.



- Closed-end bead

Anti-falling closed-end clamping strips are of high strength and can effectively prevent glass from falling off caused by typhoons.



- Locking point

Equipped with additional anti-prying lock points, it provides better security for theft prevention and home protection.



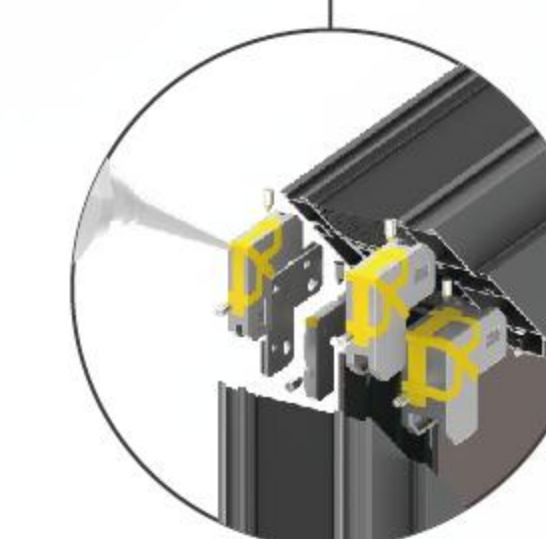
- Corner reinforcement

Glue-injected corner pieces, which can enhance strength and prevent leakage.



- Handle

The handles made by Siegenia-aubl, a German brand, have stable performance, are durable and operate smoothly.



- Corner glue injection

The two-component glue of WICONA (a German brand) is injected into the corners, with a strength as high as 30,000N.

LOVEMIKA Unitized curtain wall

PRODUCT CONFIGURATION

- ① Profiles: Ultra-high precision aluminum materials, with a wall thickness of 2.5mm
- ② Frame thickness: 150mm
- ③ Surface treatment: AkzoNobel electrostatic powder spraying
- ④ Sealing strips: EPDM automotive-grade sealing strips (with a rubber content of 30%)
- ⑤ Thermal break strips: 24mm, high-quality PA66GF25 thermal break strips
- ⑥ Glass: 5GLow-E+12Ar+5G+12Ar+5G
- ⑦ Opening method: Compatible with multiple series of windows and doors



PRODUCT COLOR

Exterior color

LOVEMIKA CAFÉ

BERLIN GRAY

TURQUOISE

ENAMEL WHITE

Interior color

LOVEMIKA CAFÉ

BERLIN GRAY

LIGHT BLUE AND WHITE

ENAMEL WHITE

CANNES BROWN

CHAMPAGNE GOLD

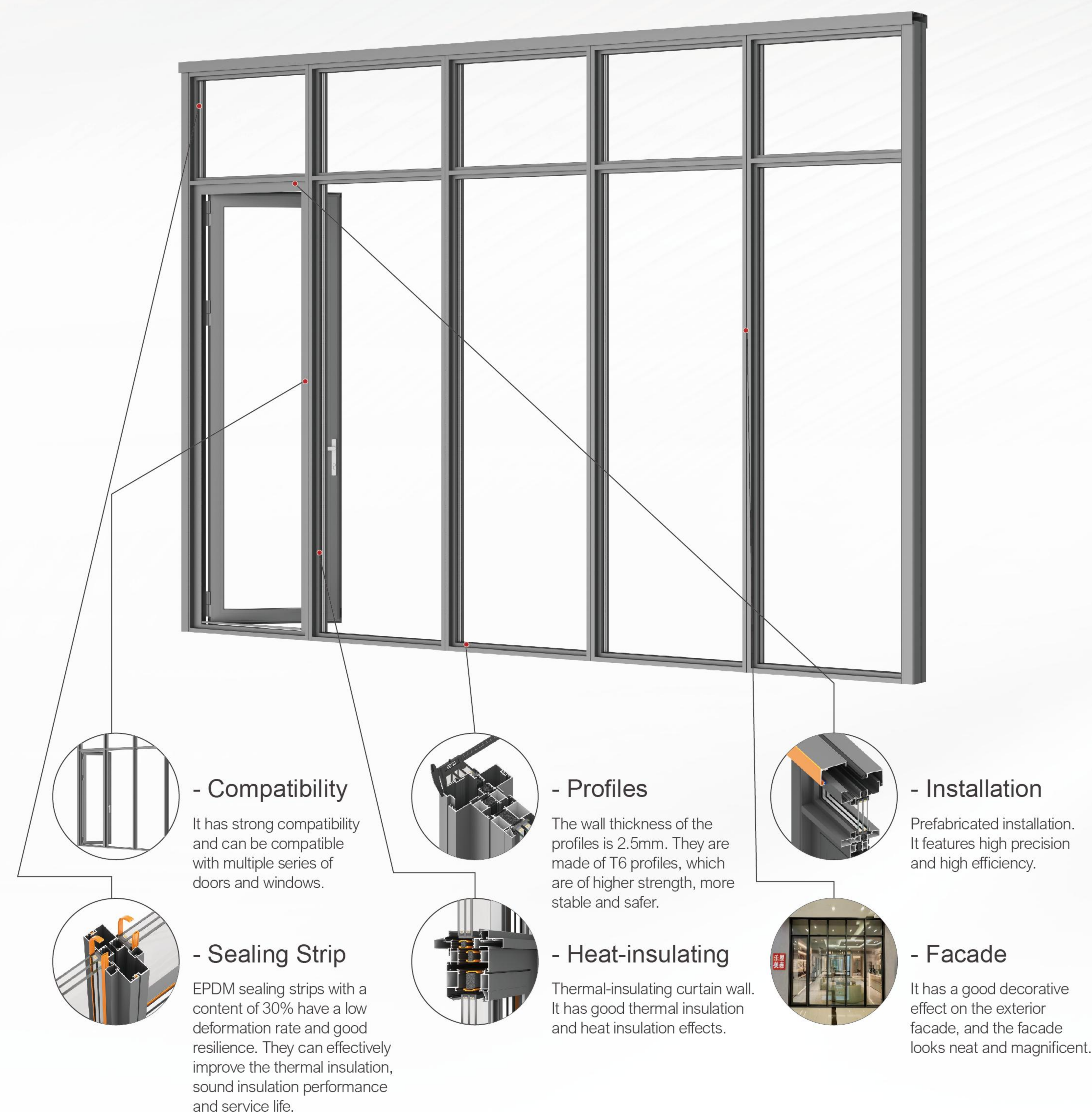
STARLIGHT GRAY

CRYSTAL BLACK

Curtain wall

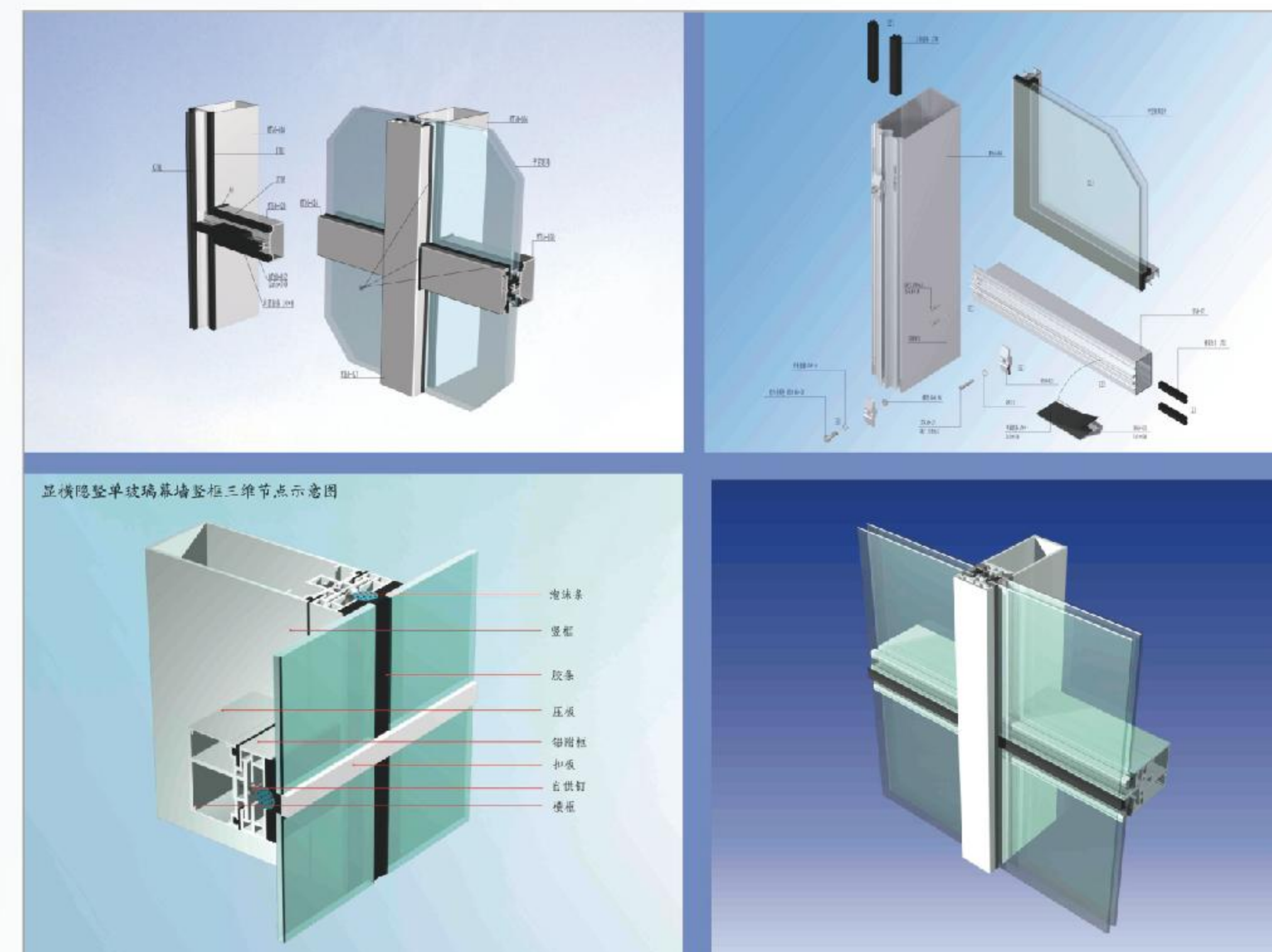
LOVEMIKA

Unitized curtain wall



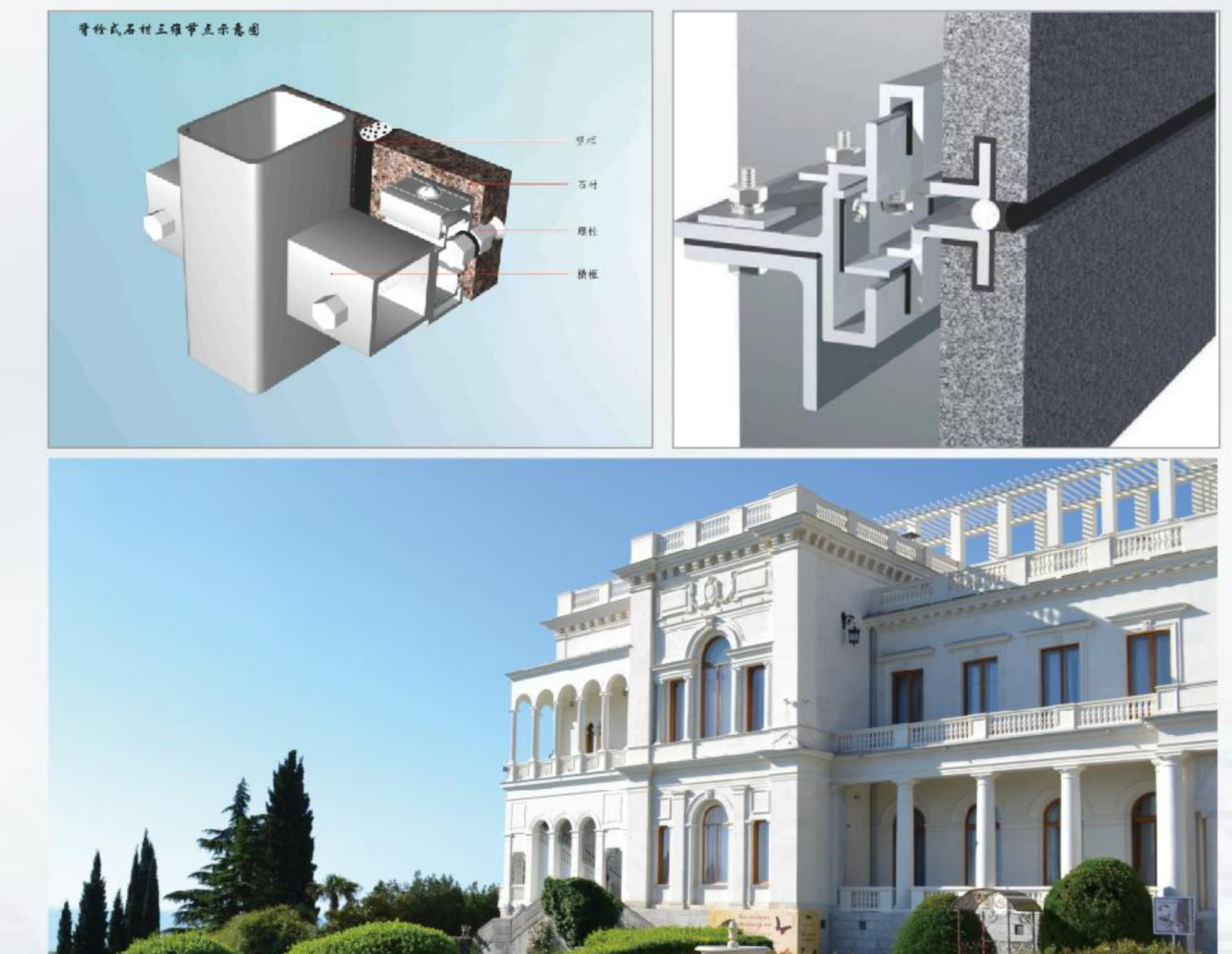
Glass curtain wall

The glass curtain wall is composed of a supporting structural system and glass. There are two types of curtain walls: single-layer glass and double-layer glass. The glass curtain wall is a beautiful and novel decorative method for building walls and is a prominent feature in the era of modernist high-rise buildings.



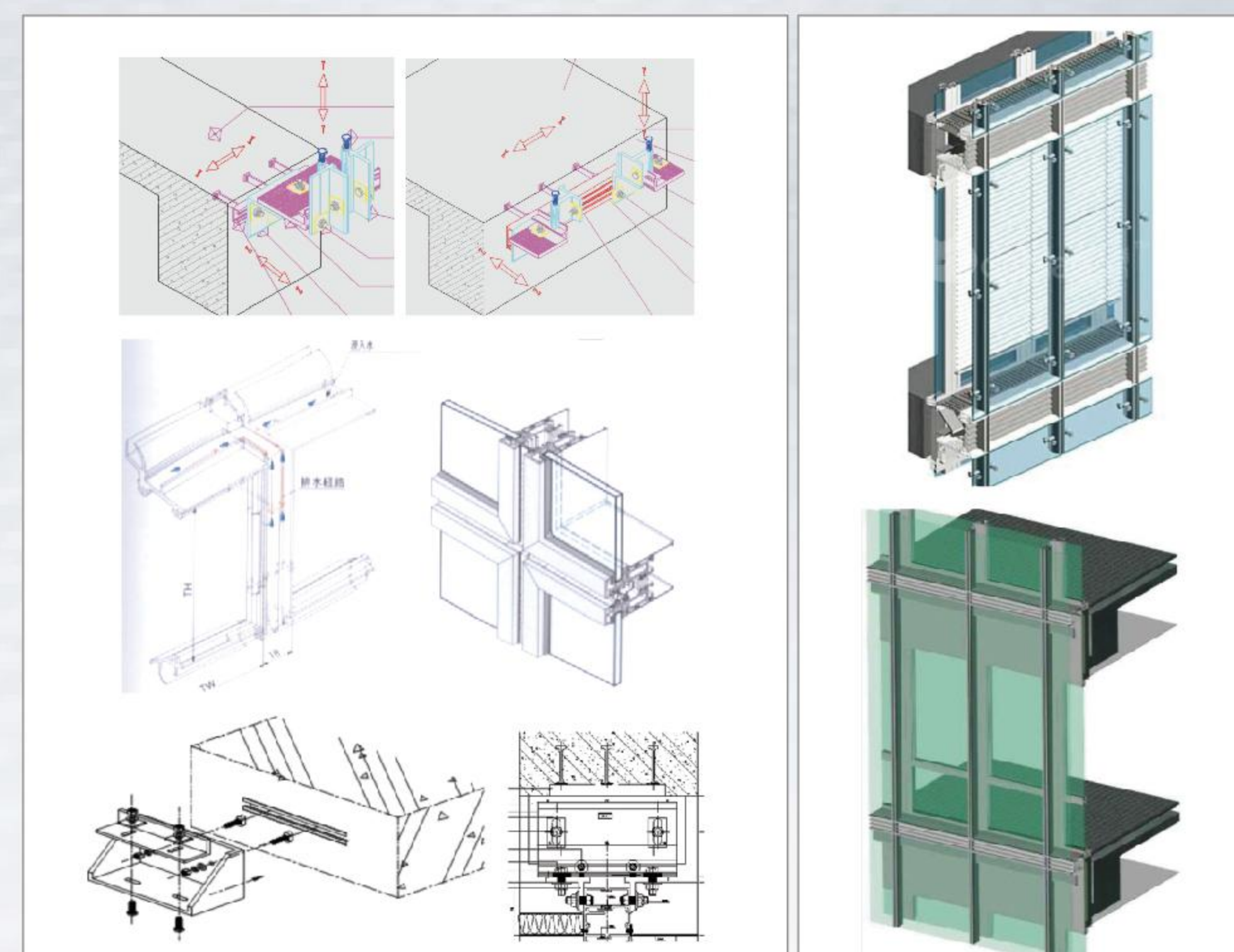
Stone curtain wall

This kind of products are widely used in the internal and external walls, foyers and other parts of high-end commercial buildings, hotels and office buildings. The noble and bright texture of the stones makes the buildings look solemn, elegant, noble and luxurious.



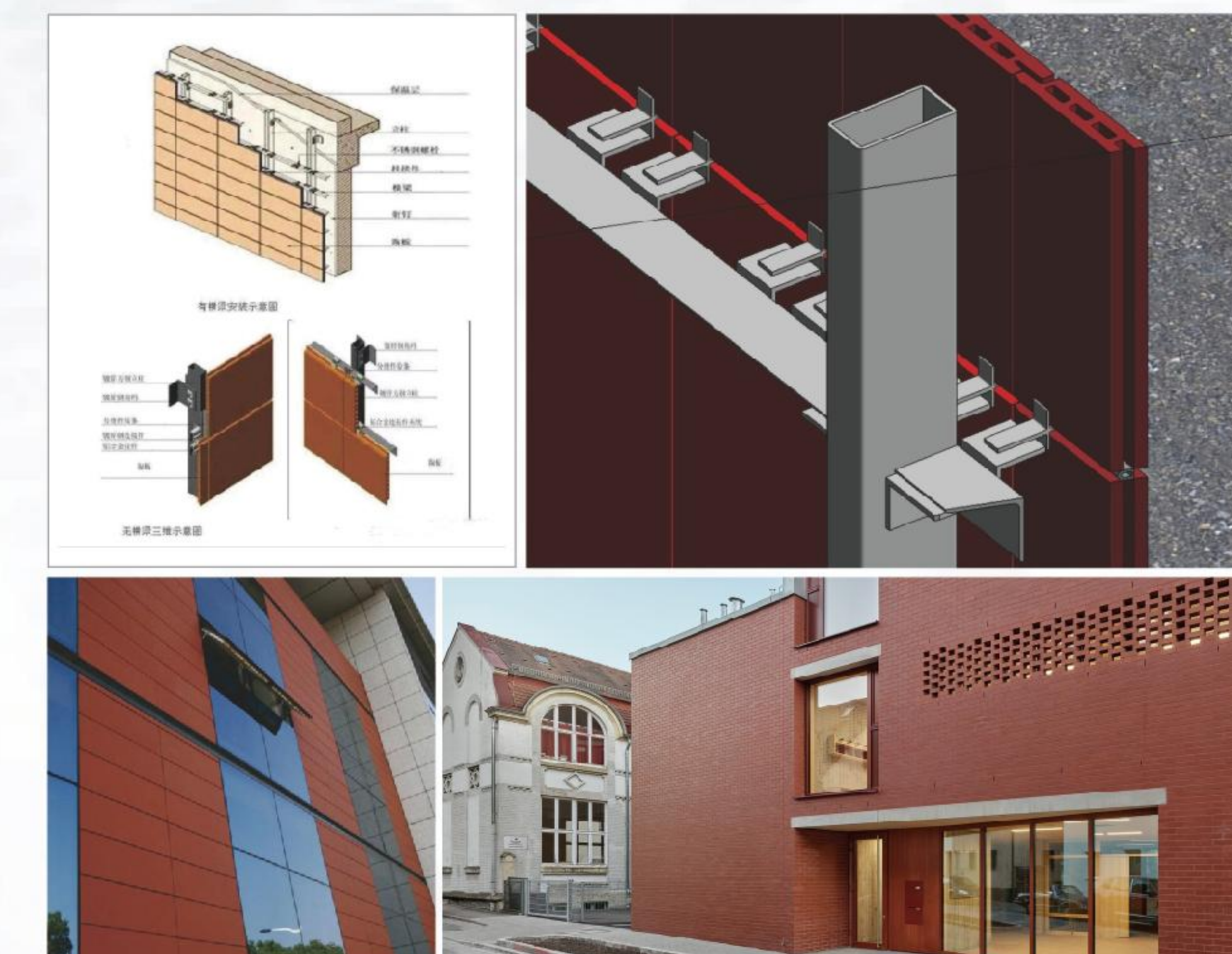
Unitized curtain wall

The unitized curtain wall involves assembling various components of the curtain wall (including panels, support frames, etc.) into panel units in the factory. Then these units are transported to the construction site for integral hoisting and are accurately fixed onto the main structure through the pre-embedded transfer system. Minor adjustments are made when necessary to complete the installation of the curtain wall.



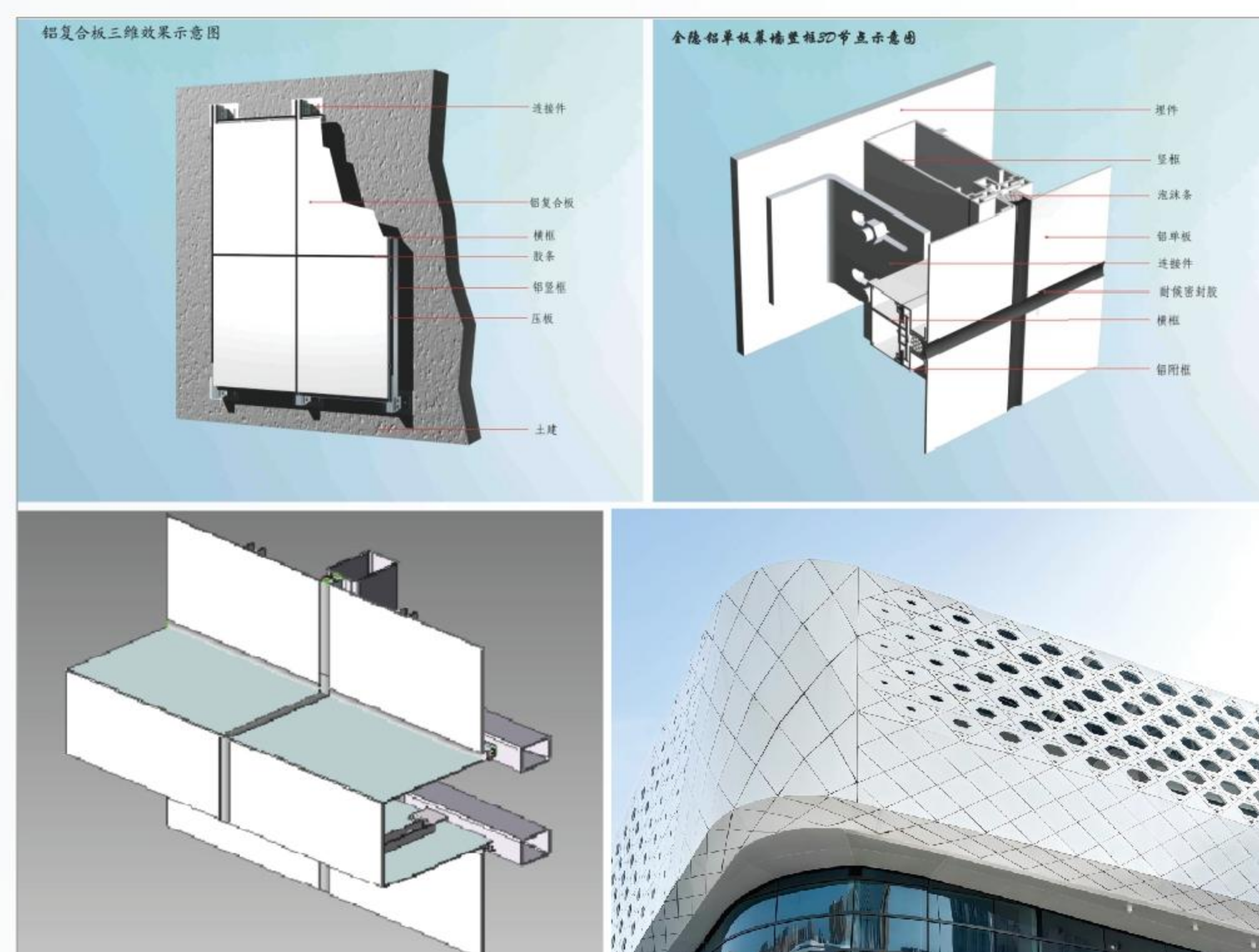
Curtain wall of terracotta panels

The curtain wall of terra-cotta panels is applicable to the interior and exterior walls of all kinds of buildings, and is especially suitable for places with harsh polluted environments.



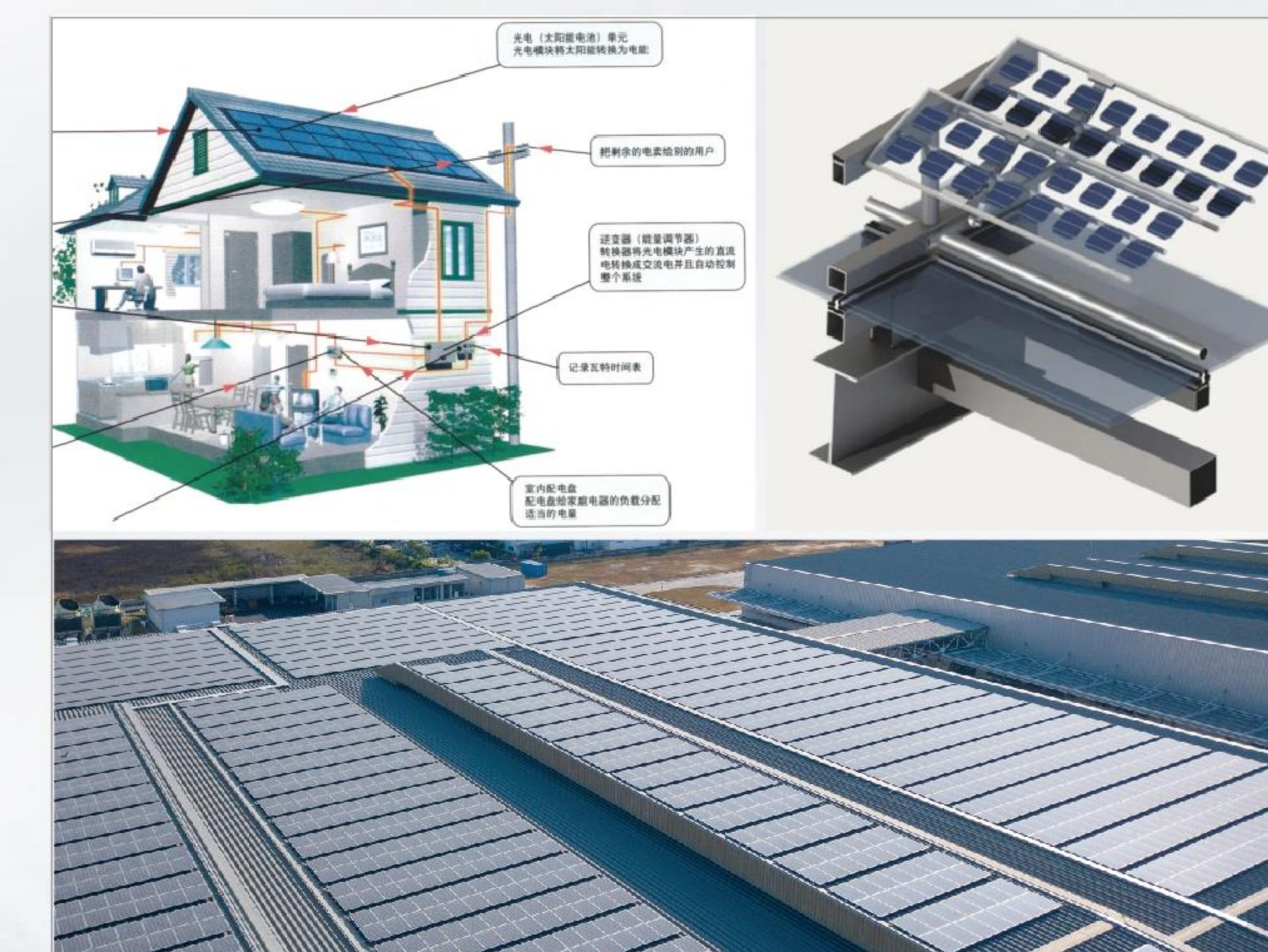
Aluminum panel curtain wall

The aluminum panel curtain wall is a kind of building curtain wall system that uses high-quality, high-strength aluminum alloy sheets as panel materials. Moreover, the materials can be 100% recycled and reused, meeting the requirements of environmental protection.



Photovoltaic curtain wall

The photovoltaic curtain wall can generate electricity using solar energy, reducing energy consumption and meeting the requirements of green environmental protection.



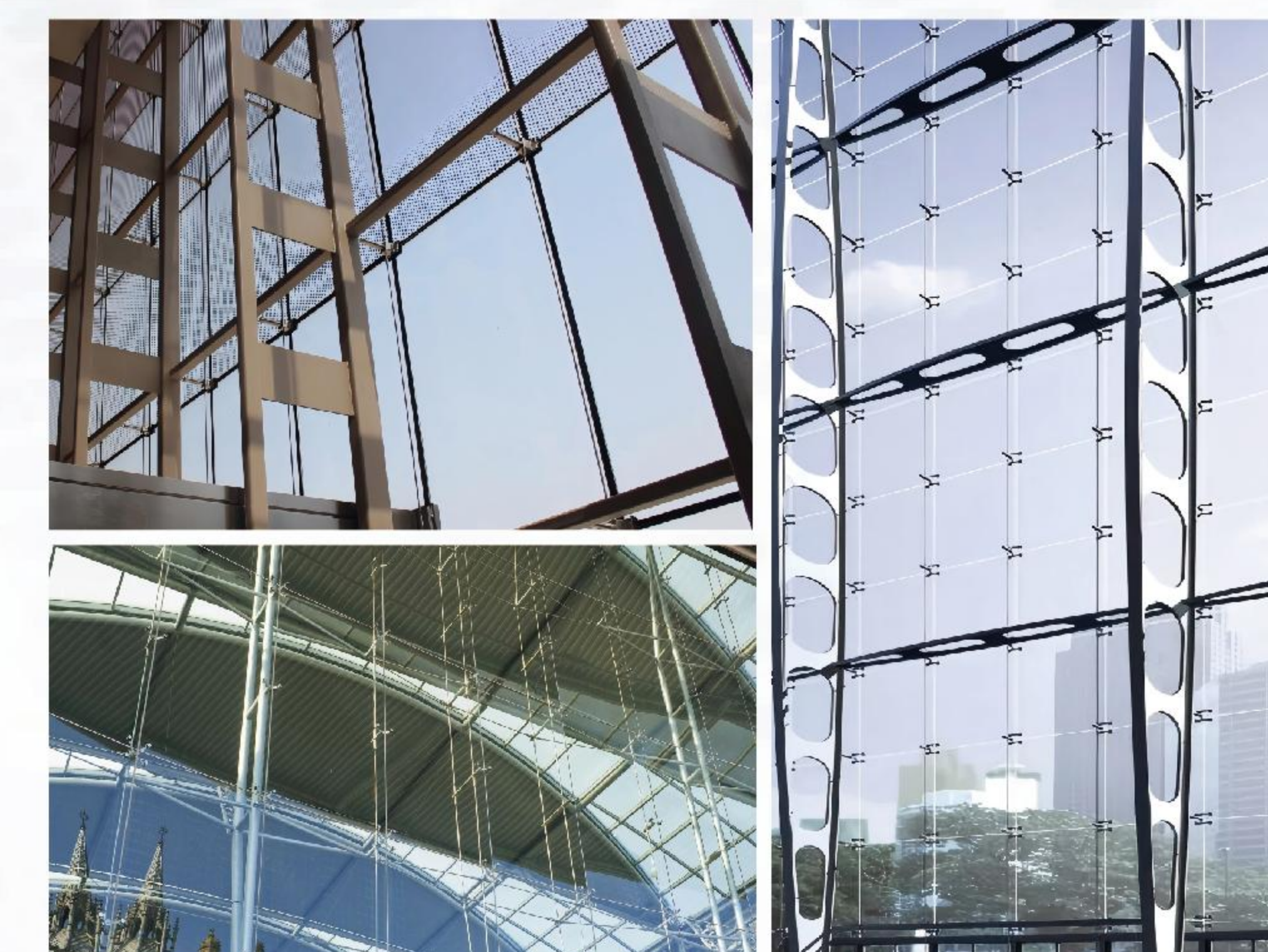
UHPC curtain wall

The UHPC curtain wall is a kind of curtain wall material made of Ultra-High Performance Concrete (UHPC), which has excellent physical properties and broad application prospects. The UHPC curtain wall panel is a curtain wall panel material made of high-performance concrete, possessing outstanding seismic, fireproof and durable properties. Compared with ordinary concrete, UHPC has higher strength, better durability and a more refined microstructure, and can perform excellently in extreme environments.



Point-supported glass curtain wall

The main load-bearing members of the cable curtain wall include stainless steel cables, high-vanadium cables and stainless steel tie rods. These members form a load-bearing support system through specially made fixtures and connectors. The fixed ends of the cable curtain wall are usually set at the top, while the adjustable ends are set at the bottom. The fixtures are mostly connectors or custom-made fixtures.



Sunroom LOVEMIKA 160

PRODUCT CONFIGURATION

- ① Profile: Ultra-high precision aluminum material with a wall thickness of 3.0 - 5.0 mm
- ② Surface treatment: AkzoNobel electrostatic powder coating
- ③ Thermal break strip: 28 mm, high-quality PA66GF25 thermal break strip
- ④ Sealing strips: Ethylene propylene diene monomer (EPDM) automotive-grade strips (with a rubber content of 30%)
- ⑤ Glass: 8mm Low-E + 16A + 6mm + 1.52mm PVB + 6mm
- ⑥ It can be equipped with skylights, electric functions, remote control, fingerprint recognition, voice control, wind sensors, rain sensors and various achievable modeling forms



PRODUCT COLOR

Exterior color

LOVEMIKA CAFÉ

BERLIN GRAY

TURQUOISE

ENAMEL WHITE

Interior color

LOVEMIKA CAFÉ

BERLIN GRAY

LIGHT BLUE AND WHITE

ENAMEL WHITE

CANNES BROWN

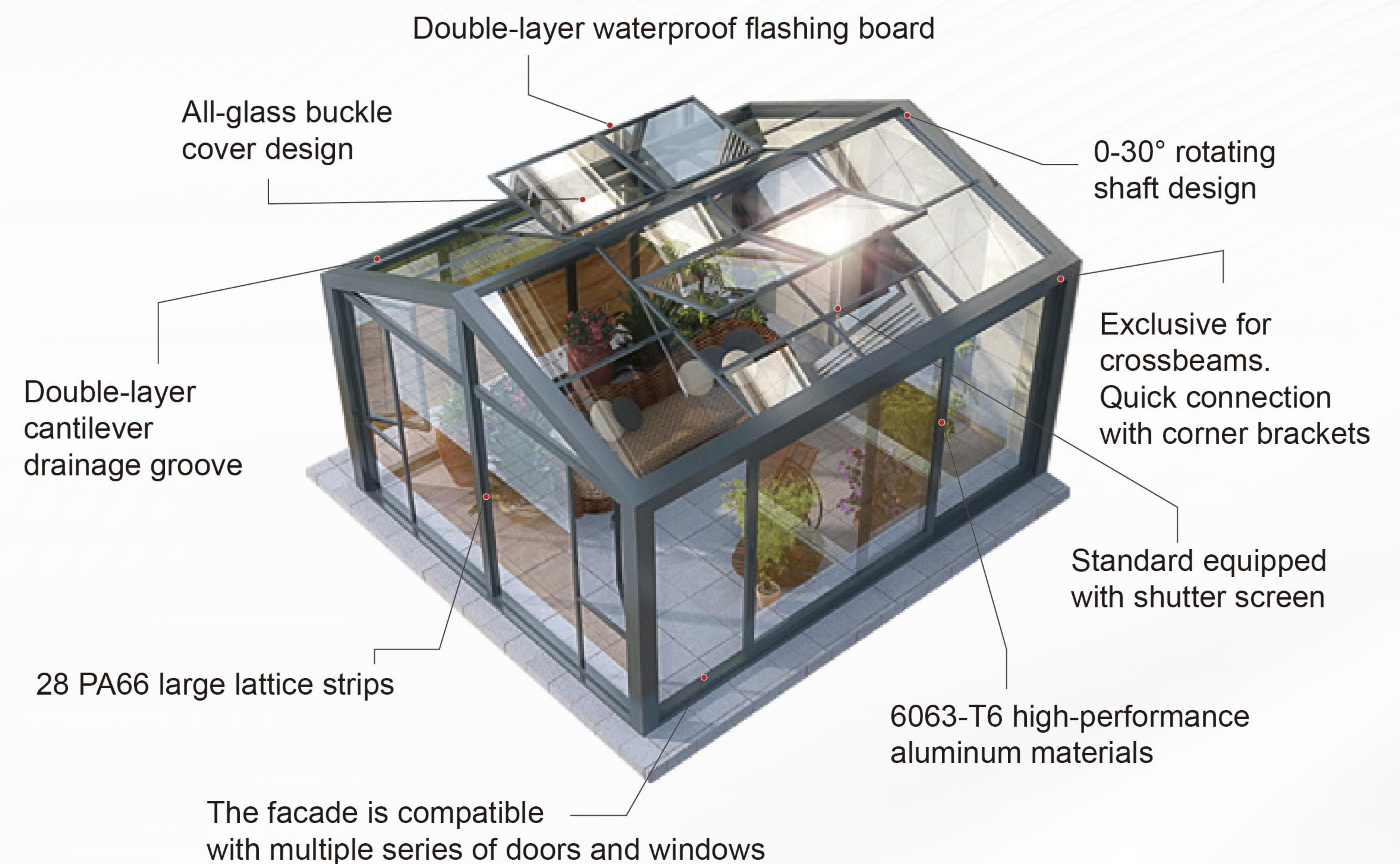
CHAMPAGNE GOLD

STARLIGHT GRAY

CRYSTAL BLACK

LOVEMIKA 160

Sunroom frame diagram



CASES IN CHINA



National Children's Regional Medical Center



Chang'an Jiuli in Beijing



China Resources MixC World in Hengqin, Zhuhai



China Resources Land Nanjing Commercial Street



Dalian International Shipping Building



The sub-center of the northern part of Hangzhou

CASES OVERSEAS



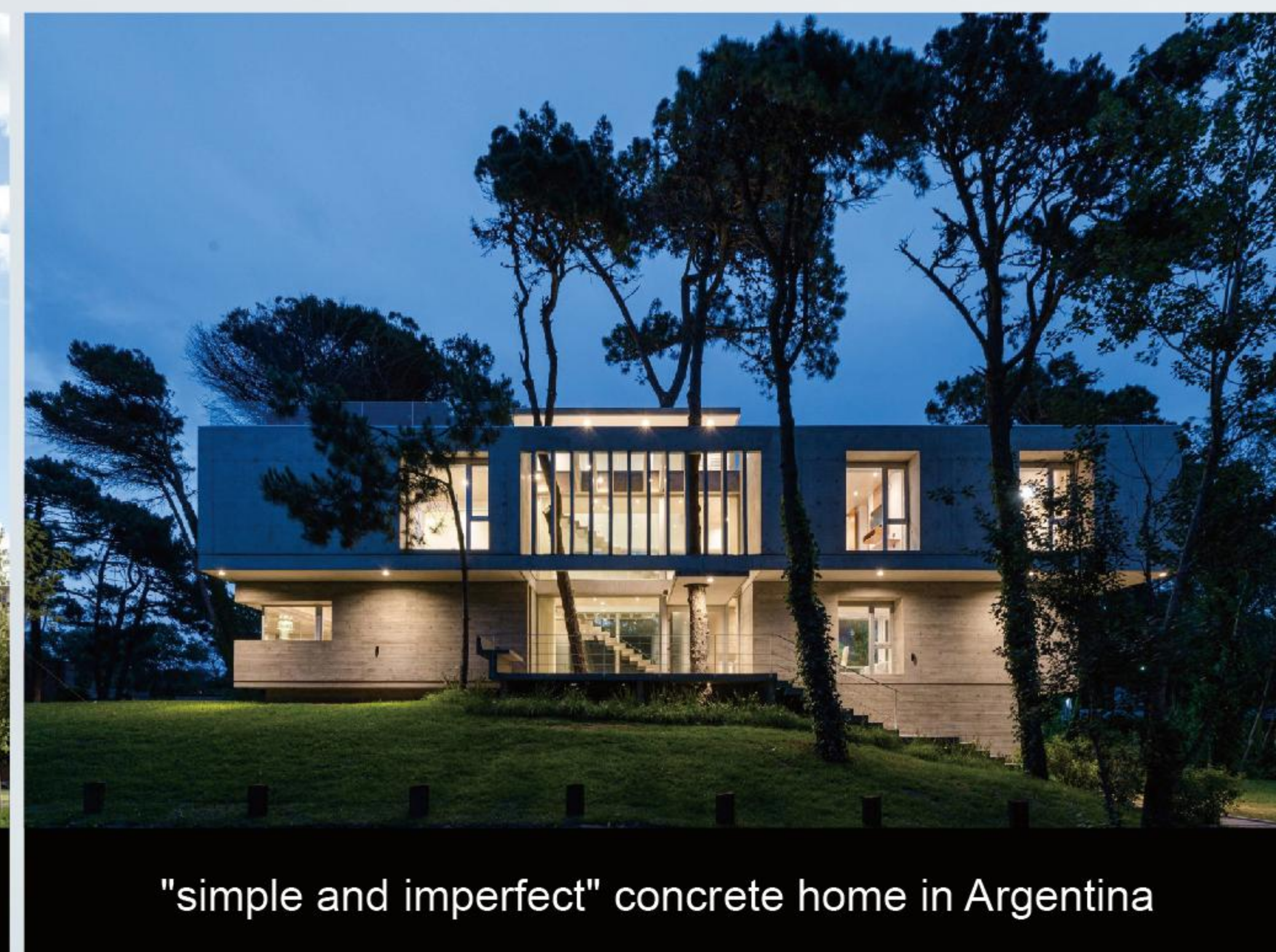
University of Illinois at Chicago



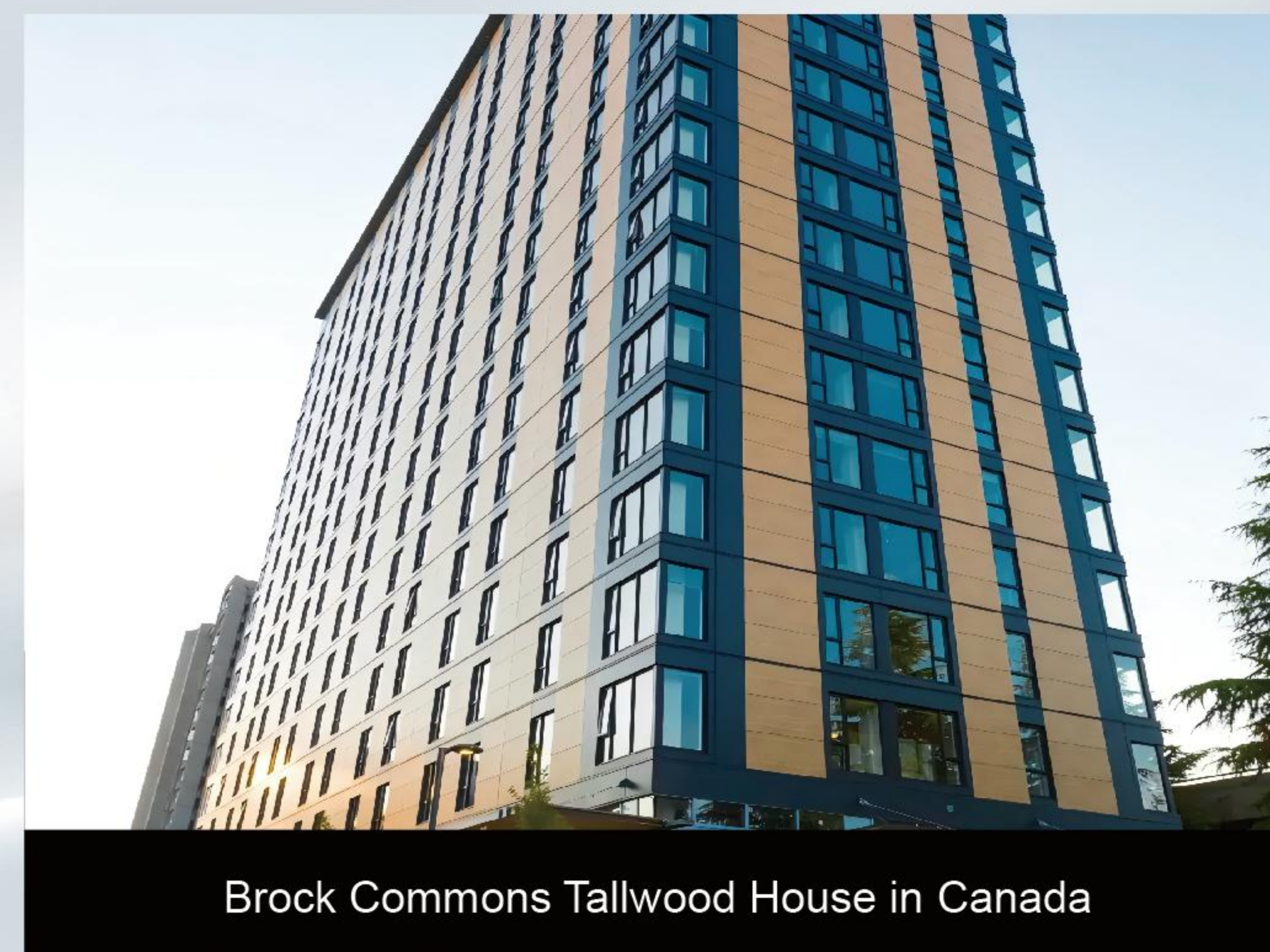
THE FLORIDA STATE UNIVERSITY
Curtain wall of terra-cotta panels



The Carmen Martín Gaité building
in Spain with an area of 21,153 square meters



"simple and imperfect" concrete home in Argentina



Brock Commons Tallwood House in Canada



Kingdom of Tonga | Pacific Regional Infrastructure Facility