



Whatsapp



WeChat

What we can offer?

- Innovatitive brand core values
- Advancing quality
- Excellent service
- Competitive price
- Quickly delivery
- Advertising supports
- Brand art works
- Brand show stands
- Customer recommendation
- Company details show on brand official website

oggin®

TAIZHOU AOJING PUMP CO.,LTD.

📍 Add:No. 370, Xialangqiao Industrial Zone, Daxi Town, Wenling City, Zhejiang Province, China

✉ Mail:info@ogginpump.com

📺 www.tiktok.com/@waterpumps_oggin

🌐 Web : www.ogginpump.com

🗨 Wechat:13968638917



OGGIN®

ENERGY EFFICIENT
GLOBAL INTELLIGENT WATER PUMP SUPPLIER

CONTACT US:



ABOUT US

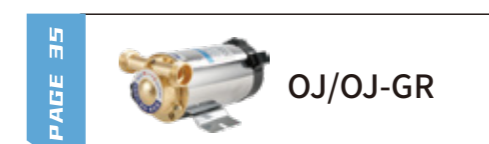
Taizhou Aojing Pump Co., Ltd. is located at No.370, Xialangqiao Industrial Zone, Daxi Town ,Wenling City, Zhejiang Province. It is an intelligent pump manufacturer integrating R&D, design, production and sales. The company has been to the R&D and production of booster pumps, mainly including intelligent variable frequency booster pumps, hot and cold water circulation pumps, self-priming pumps, pipeline pumps, etc. The company has advanced testing equipment and assembly line equipment, as well as fully functional automatic test experiments room, providing good production conditions and reliable quality assurance for the products. The company's annual production capacity reaches a production scale of more than 1.2 million pcs.

The company has obtained a number of patents and passed ISO9000 certification and CE certification. The advanced technology of the company's products is at the forefront of its peers in the world.

OGGIN's business management philosophy: Service creates value, quality wins trust! Only by taking every detail seriously can the overall quality and satisfaction be improved. Hundreds of millions of OGGIN water pumps have outstanding performance in operation. Countless cases of successful use have established the brand image of OGGIN, winning recognition and praise from professionals and users.



CATALOGUE



CERTIFICATIONS

OGGIN is a famous circulation pump manufacturer and supplier, providing high-quality products for our customers.



Product Collection

OGGIN is a famous circulation pump manufacturer and supplier, providing high-quality products for our customers.

TYPE KEY

Example

LRS 25 / 6 B - 180 G

Working Model

LRS means three speeds circulation pump
 AJP means premanent frequency circulation pump
 UPS means wall mounted boiler pump

Nominal Diameter

15	G½" / G¾"
20	G¾" / G1"
25	G1" / G1½"
32	G1¼" / G2"

Nominal Head

4	4m
5	5m
6	6m

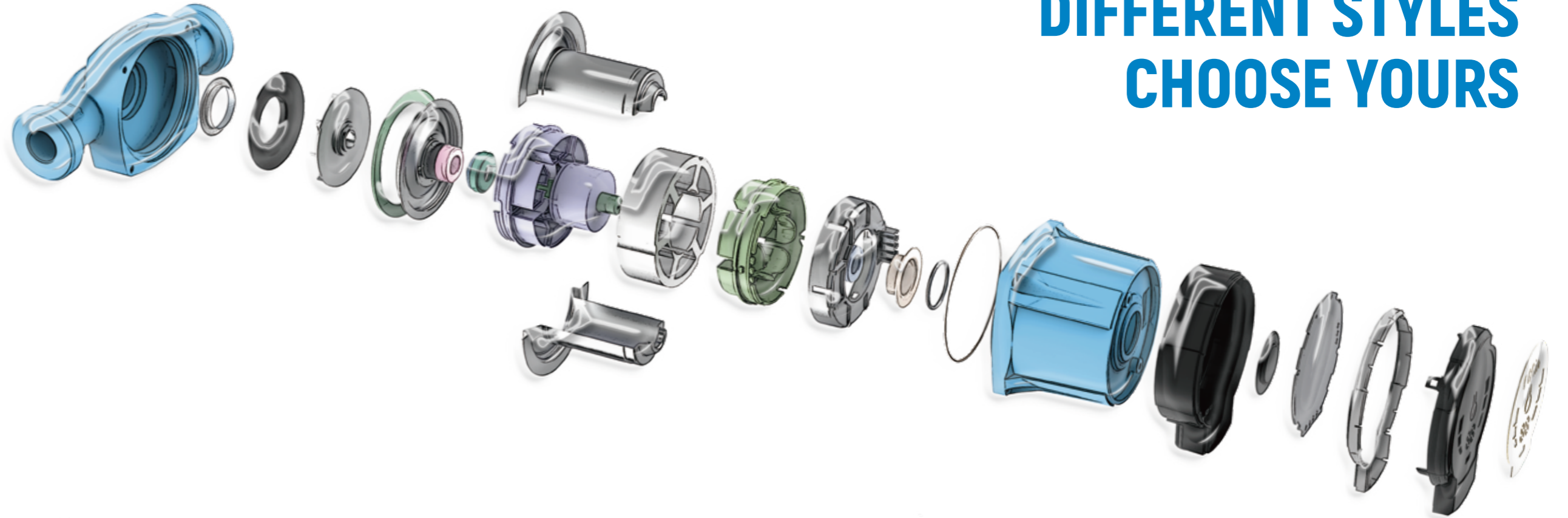
Pump body,Material

S	Stainless Steel
B	Brass
Without Mark	Cast Iron

Pump body, port to port length

130	Port to port length 130mm
160	Port to port length 160mm
180	Port to port length 180mm
200	Port to port length 200mm

pumpbody style



DIFFERENT STYLES CHOOSE YOURS

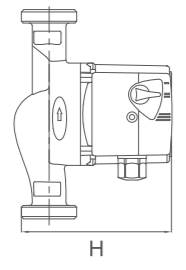
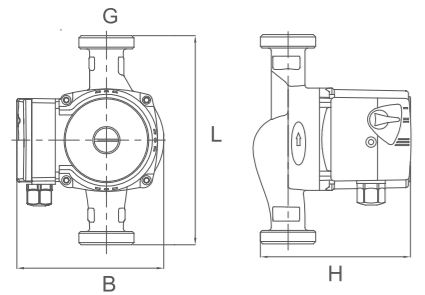
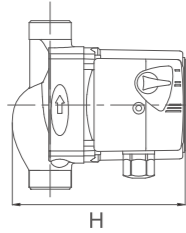
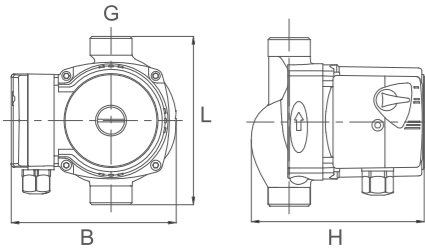
机筒外观款式
Pumpbody Styles



LRS-6 Circulation Pump Series



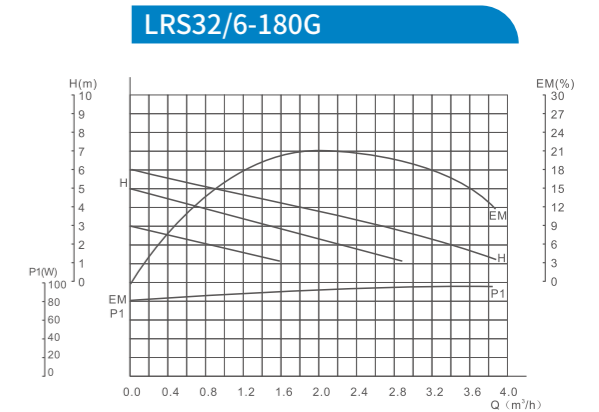
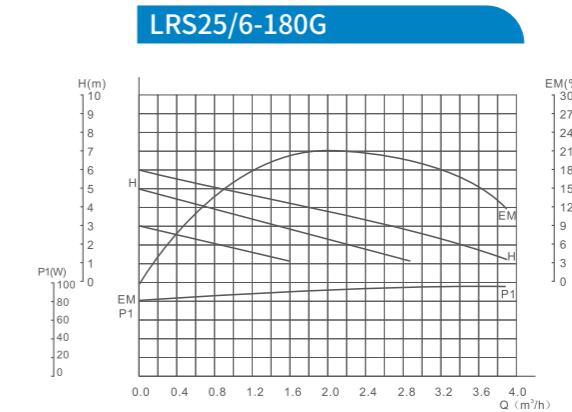
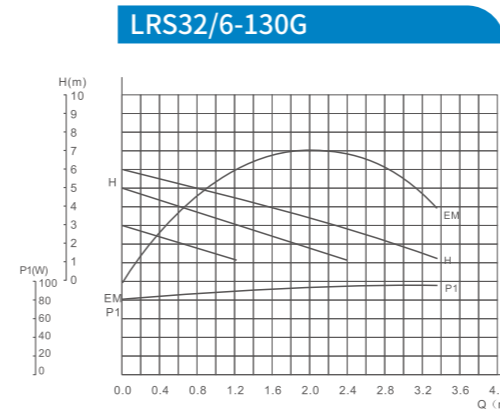
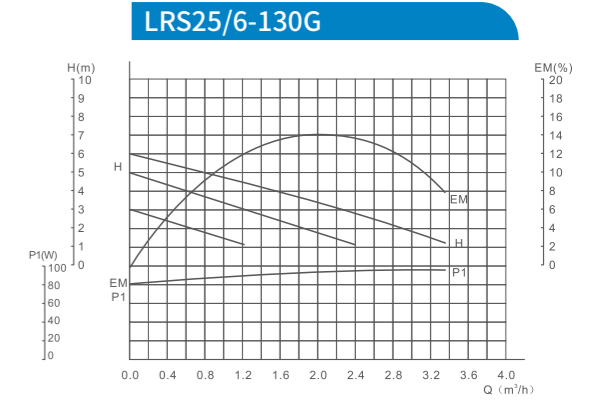
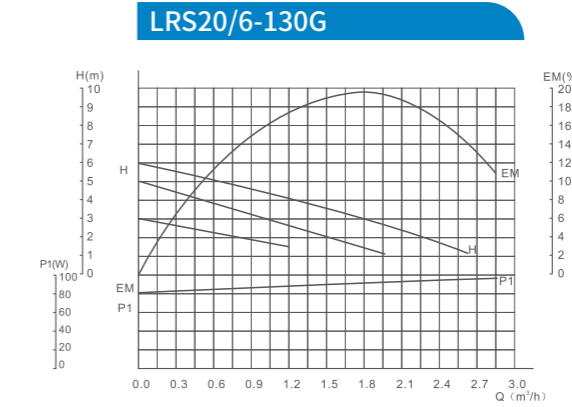
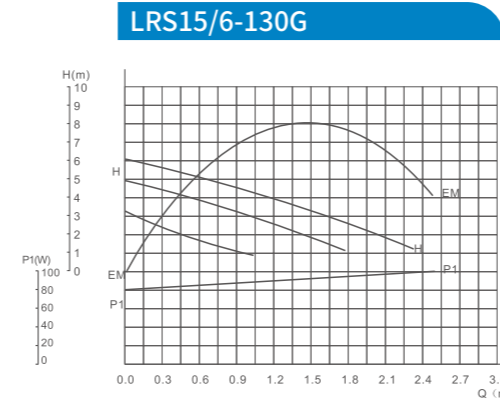
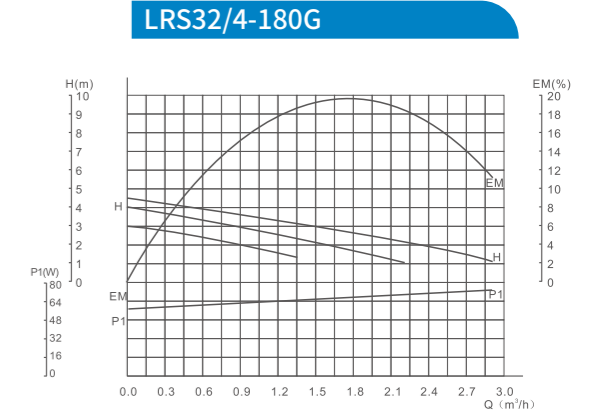
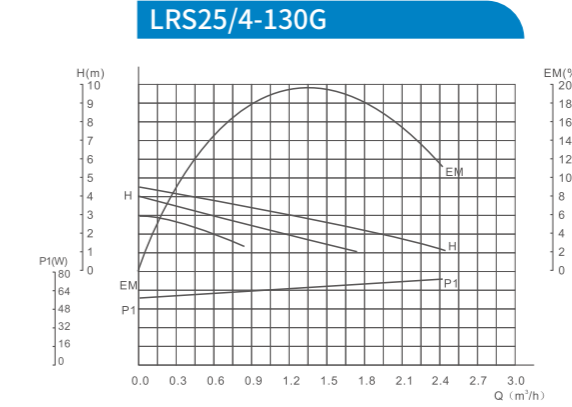
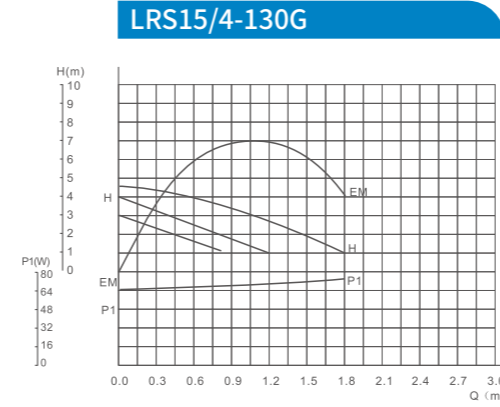
LRS15/6-130W LRS20/6-130T LRS25/6-130D LRS32/6-130X LRS25/6-180B LRS25/6-180A LRS32/6-180G



Technical parameter

Model	Power	Max.Flow	Max.Head	Voltage			Material of pump body			Dimension(mm)			
	(W)	(m³/h)	(m)	220V/ 50Hz	220V/ 60Hz	127V/ 60Hz	Cast Iron	Brass	Stainless steel	L	B	H	G
LRS15/4-130G	72/53/38	1.8/1.2/0.8	4.5/4/3	●	●	●	●	●	●	130	127	133	¾"
LRS20/4-130G		2.3/1.7/0.8											1"
LRS25/4-130G		2.9/2.1/1.3											1½"
LRS32/4-130G		2.9/2.1/1.3											2"
LRS25/4-180G		3.4/2.3/1.3											1½"
LRS32/4-180G		3.4/2.3/1.3											2"

Model	Power	Max.Flow	Max.Head	Voltage			Material of pump body			Dimension(mm)			
	(W)	(m³/h)	(m)	220V/ 50Hz	220V/ 60Hz	127V/ 60Hz	Cast Iron	Brass	Stainless steel	L	B	H	G
LRS15/6-130G	93/67/46	2.3/1.7/1.0	6/5/3	●	●	●	●	●	●	130	127	133	¾"
LRS20/6-130G		2.6/2.0/1.2											1"
LRS25/6-130G		3.3/2.3/1.3											1½"
LRS32/6-130G		3.3/2.3/1.3											2"
LRS25/6-180G		3.9/2.9/1.6											1½"
LRS32/6-180G		3.9/2.9/1.6											2"



LRS-7

Circulation Pump Series

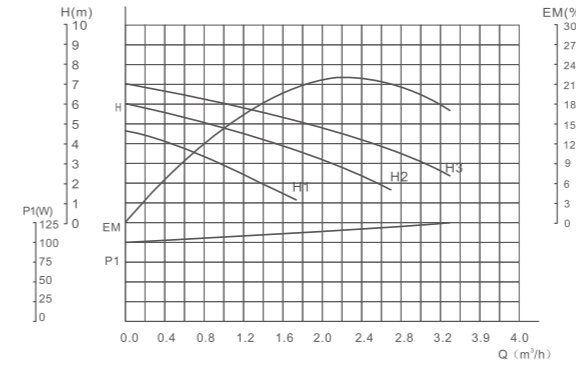


LRS25/7-180G

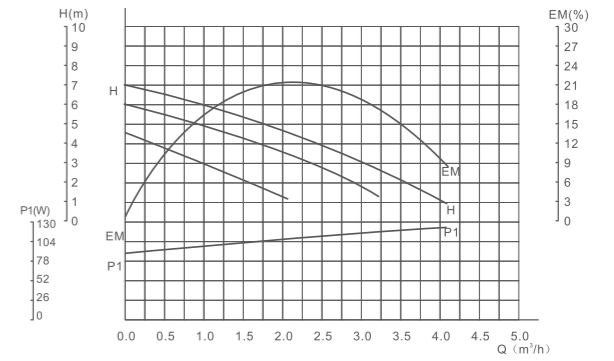


LRS32/7-180W

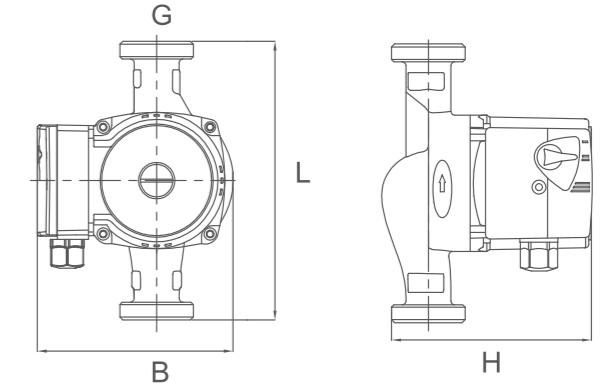
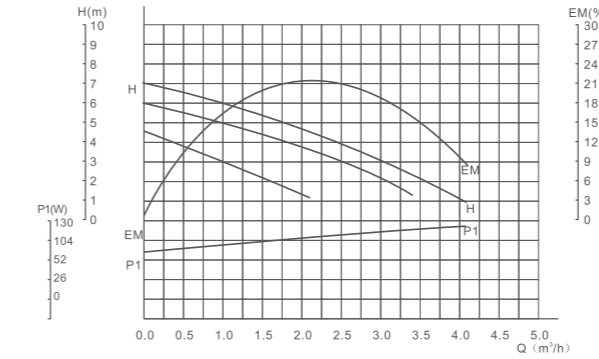
LRS15/7-130G



LRS25/7-130G



LRS32/7-130G



Technical parameter

Model	Power	Max.Flow (m³/h)	Max.Head (m)	Voltage			Material of pump body			Dimension(mm)			
	(W)			220V/ 50Hz	220V/ 60Hz	127V/ 60Hz	Cast Iron	Brass	Stainless steel	L	B	H	G
LRS15/7-130G	125/93/67	3.3/2.7/1.7	7/6/4.5	●	●	●	●	●	●	130	123	145	3/4"
LRS20/7-130G		3.8/3.0/1.9											1"
LRS25/7-130G		4.1/3.2/2.1											1 1/2"
LRS32/7-130G		4.2/3.4/2.2								180	123	145	2"
LRS25/7-180G		4.1/3.2/2.1											1 1/2"
LRS32/7-180G		4.2/3.4/2.2											2"

LRSX-8

Circulation Pump Series



LRSX25/8-180W

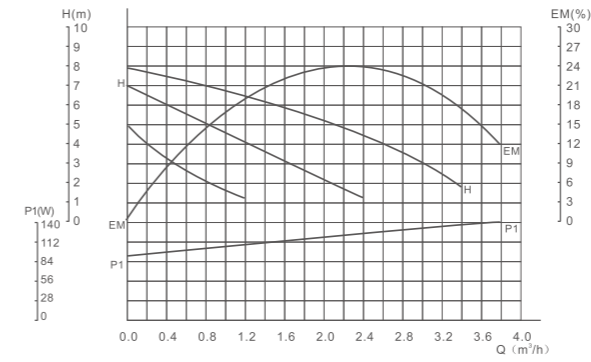


LRSX32/8-180W

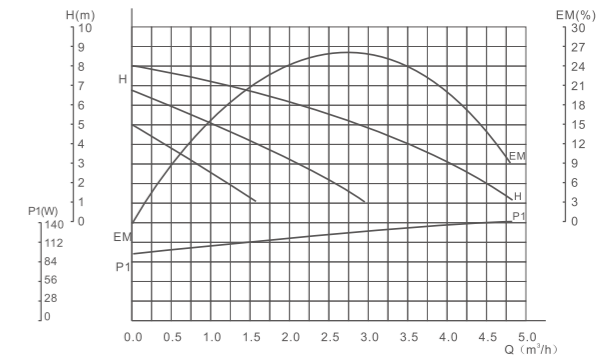


LRSX32/8-180X

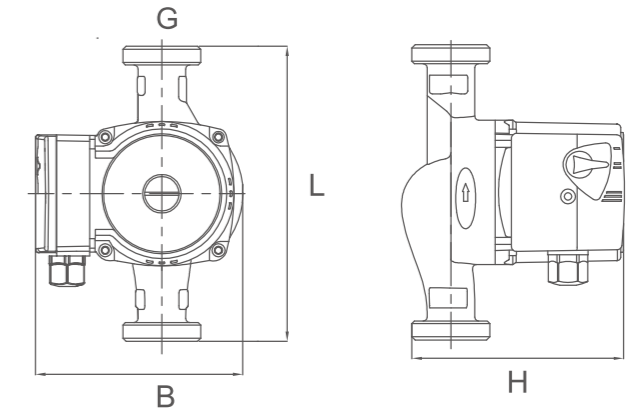
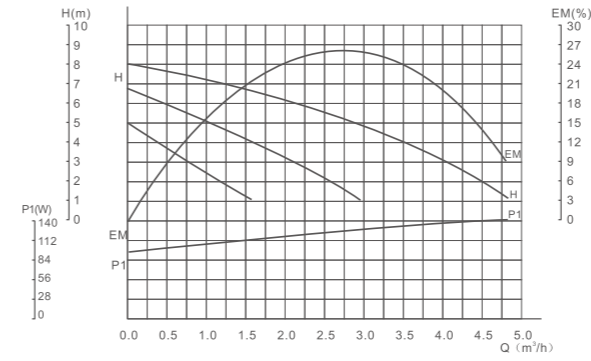
LRSX20/8-180G



LRSX25/8-180G



LRSX32/8-180G



Technical parameter

Model	Power	Max.Flow	Max.Head	Voltage			Material of pump body			Dimension(mm)			
	(W)	(m³/h)	(m)	220V/50Hz	220V/60Hz	127V/60Hz	Cast Iron	Brass	Stainless steel	L	B	H	G
LRSX20/8-180G	140/115/75	3.4/2.4/1.2	8/7/5	●	●	●	●	●		180	127	159	1"
LRSX25/8-180G		5.4/3.6/2.0											1½"
LRSX32/8-180G		5.4/3.6/2.0											2"

LRS-8

Circulation Pump Series



LRS25/8-180G

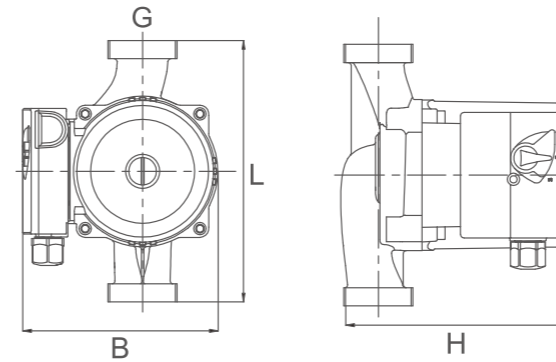
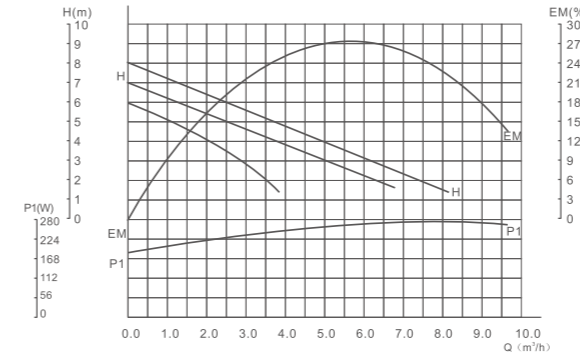


LRS32/8B-180G

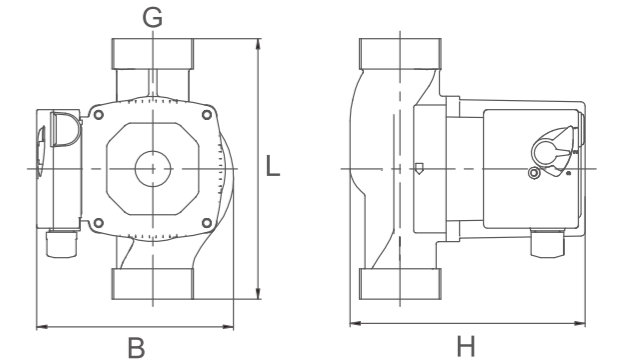
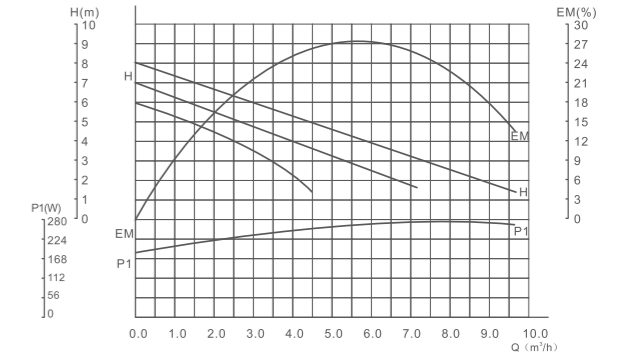


LRS25/8S-180G

LRS25/8-180G



LRS32/8-180G



Technical parameter

Model	Power	Max.Flow	Max.Head	Voltage			Material of pump body			Dimension(mm)			
	(W)	(m³/h)	(m)	220V/ 50Hz	220V/ 60Hz	127V/ 60Hz	Cast Iron	Brass	Stainless steel	L	B	H	G
LRS25/8-180G	270/210/150	8.2/6.7/3.7	8/7/6	●	●	●	●	●	●	180	134.5	158	1½"
LRS32/8-180G	270/210/150	9.6/7.2/4.5		●	●	●	●	●	●	180	137	172	2"

LRS-9

Circulation Pump Series



LRS25/9-180B

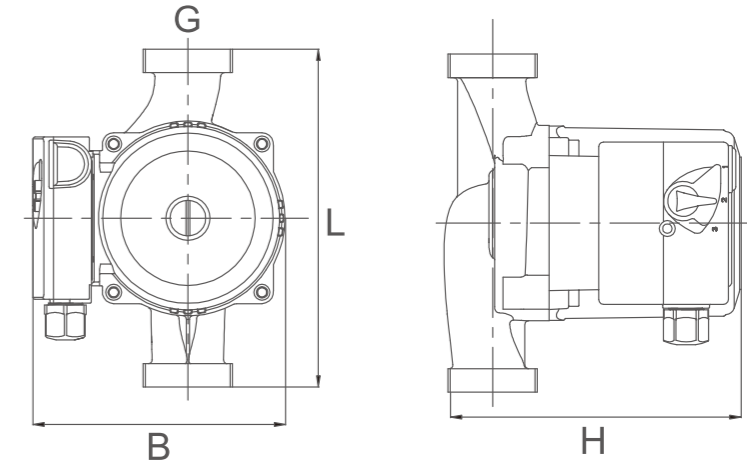
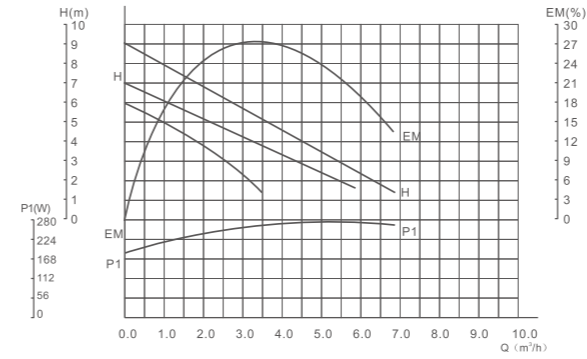


LRS25/9-180D



LRS25/9-180T

LRS25/9-180T



Technical parameter

Model	Power	Max.Flow	Max.Head	Voltage			Material of pump body			Dimension(mm)			
	(W)	(m³/h)	(m)	220V/ 50Hz	220V/ 60Hz	127V/ 60Hz	Cast Iron	Brass	Stainless steel	L	B	H	G
LRS25/9-180T	245/190/140	6.8/5.8/3	9/7/6	●	●	●	●			180	144	144	1½"
LRS32/9-180T	245/190/140	6.8/5.8/3	9/7/6	●	●	●	●			180	144	144	2"

LRS-12

Circulation Pump Series



LRS 32/12S-180G

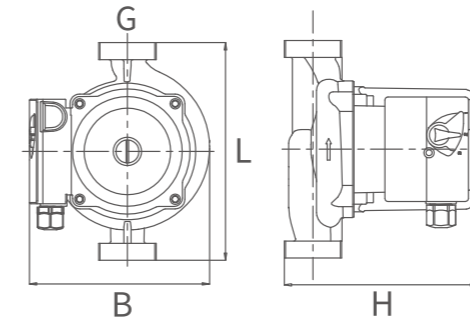
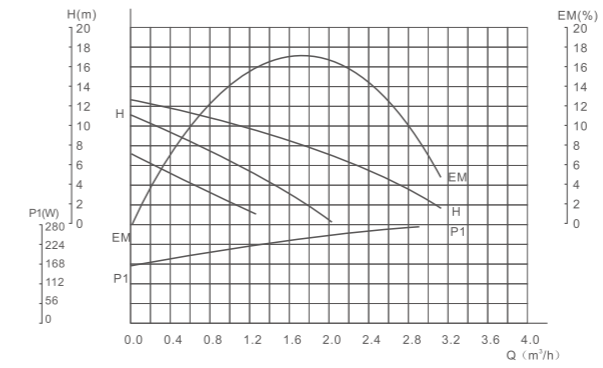


LRS 25/12-180G

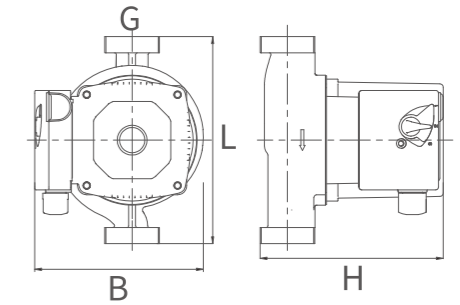
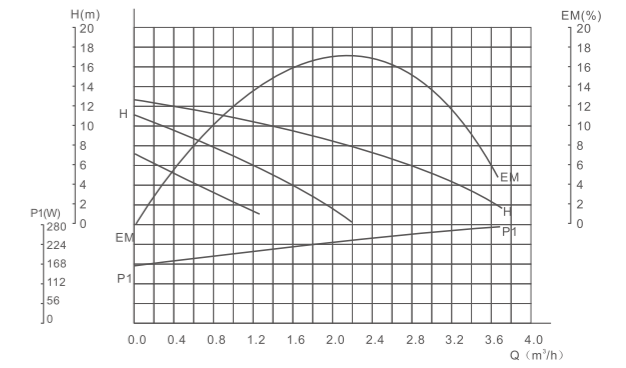


LRS 20/12B-180G

LRS20/12-180G



LRS25/12-180G



Technical parameter

Model	Power	Max.Flow (m³/h)	Max.Head (m)	Voltage			Material of pump body			Dimension(mm)			
	(W)			220V/ 50Hz	220V/ 60Hz	127V/ 60Hz	Cast Iron	Brass	Stainless steel	L	B	H	G
LRS20/12-180G	280/220/160	3.1/1.9/1.3	12/11/7					●	●	180	150	152	1"
LRS25/12-180G		3.7/2.2/1.3		●	●	●	●	●	●	180	150	160	1½"
LRS32/12-180G		3.7/2.2/1.3							●	●	180	150	160

LRS-15

Circulation Pump Series



LRS20/15-180G

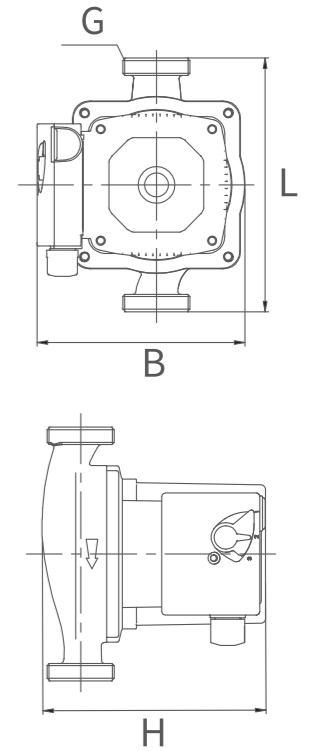
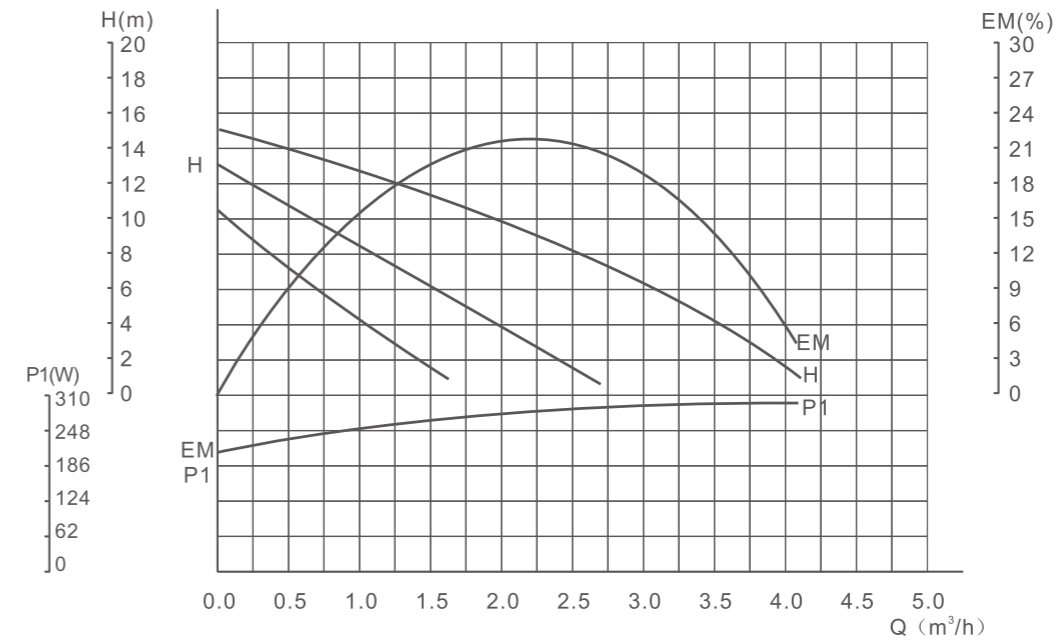


LRS25/15-180G



LRS32/15-180G

LRS25/15-180G



Technical parameter

Model	Power	Max.Flow	Max.Head	Voltage			Material of pump body			Dimension(mm)			
	(W)	(m³/h)	(m)	220V/ 50Hz	220V/ 60Hz	127V/ 60Hz	Cast Iron	Brass	Stainless steel	L	B	H	G
LRS20/15-180G	305/245/180	3.7/2.2/1.3	15/13/10	●	●	●	●	●		180	149	160	1"
LRS25/15-180G		4.1/2.8/1.7											1½"
LRS32/15-180G		4.1/2.8/1.7											2"

LRS-F

Circulation Pump Series



25/6GF

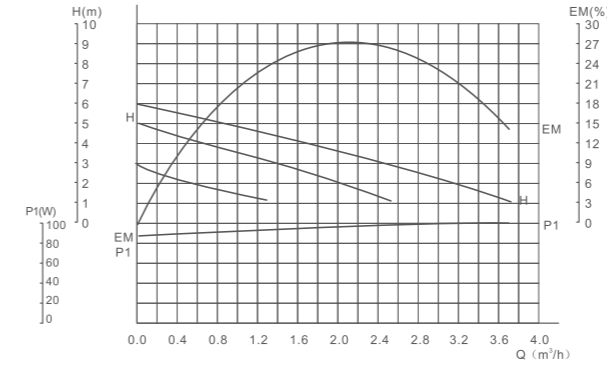


40/8GF

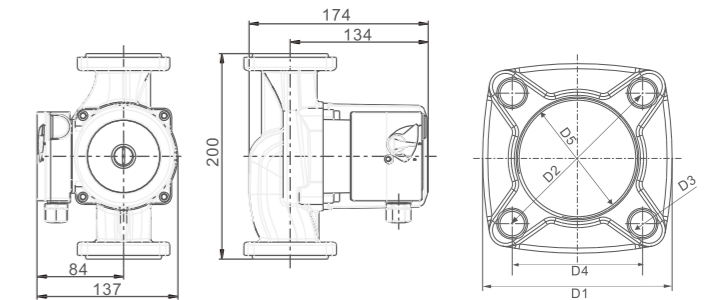
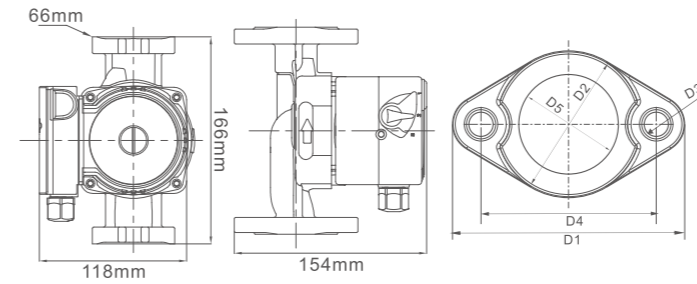
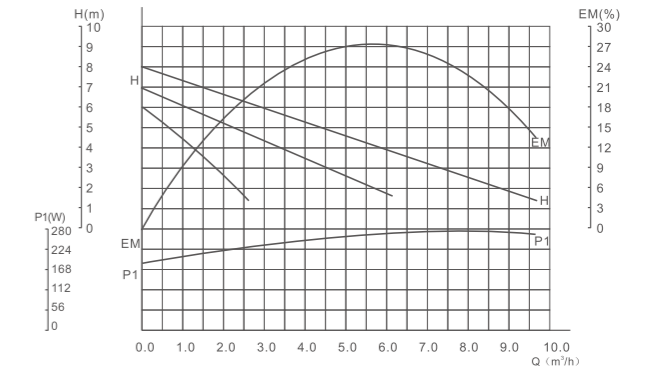


40/8SF

LRS25/6GF



LRS40/8GF



Technical parameter

Model	Power	Max.Flow (m³/h)	Max.Head (m)	Voltage			PUMP Dimension(mm)				Flange Dimension(mm)			
	(W)			220V/ 50Hz	220V/ 60Hz	127V/ 60Hz	L	B	H	G	D1	D2	D3	D4
LRS20/6GF	93/67/46	3.5/2.3/1.3	6/5/3	●	●	●	166	118	154	¾"	106	67	13.5	80
LRS25/6GF	93/67/46	3.5/2.3/1.3	6/5/3	●	●	●	166	118	154	1"	106	67	13.5	80
LRS40/8GF	270/220/150	9.6/7.2/4.5	8/7/6	●	●	●	200	147	166	1½"	93	90.5	12	64

WK

Intelligent temperature control series



LRS15/6WK-130G



LRS25/7WK-180G



LRS32/8WK-180G

Function:
Temperature Control
The pump switches on/off based on the temp. of water in pipes.

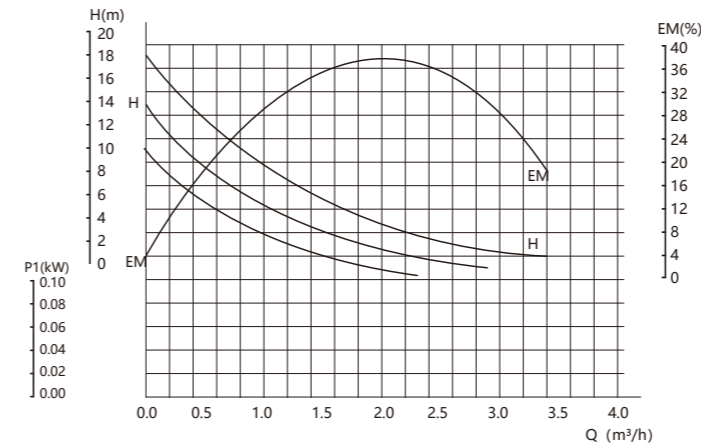
Technical parameter

Model	Simple Temp. control	Internal senser Temp. control	Voltage			Pump housing design		Performance(Max.Head)				Function
			220V/ 50Hz	220V/ 60Hz	127V/ 60Hz	S type	T type	4m	6m	8m	12m	
WK	●	●	●	●	●	●	●	●	●	●	●	●

24V DC PUMP



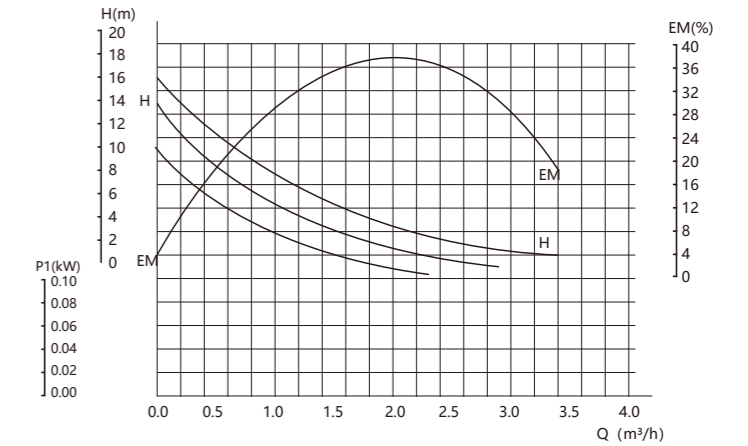
AJP 25/18-160Z



Technical parameter

Model	Power	Max.flow	Max.head	Voltage		Dimension(mm)			
				W	m³/h	M	24V	50/60HZ	L
AJP20-16-130Z	80	3	16	●	●	130	86	115	1"
AJP25-16-130Z	80	3.5	16	●	●	130	86	120	1½"
AJP20-18-160Z	80	3	18	●	●	160	86	115	1"
AJP25-18-160Z	80	3.5	18	●	●	160	86	120	1½"

AJP20/16-130Z



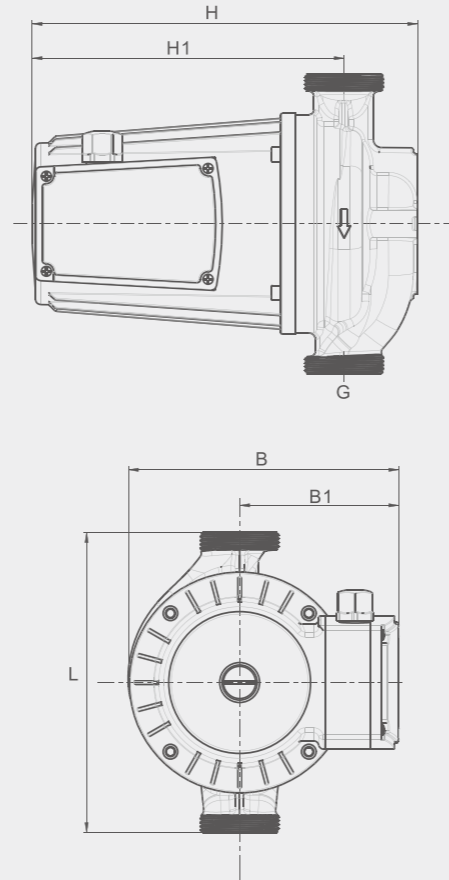
LRS-S Large circulation pump series



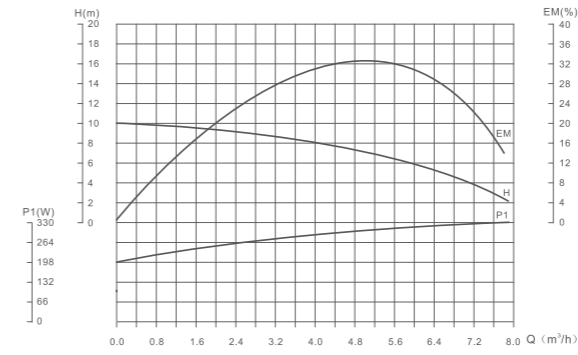
LRS40-370S



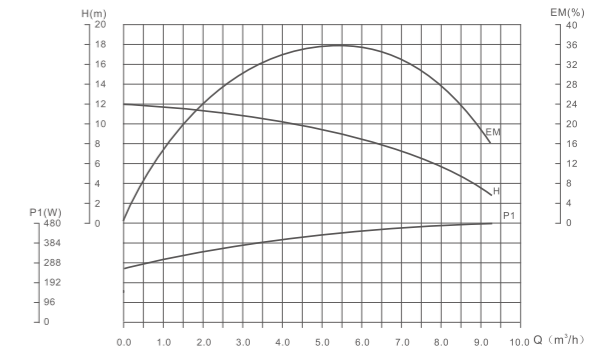
LRS40-370XS



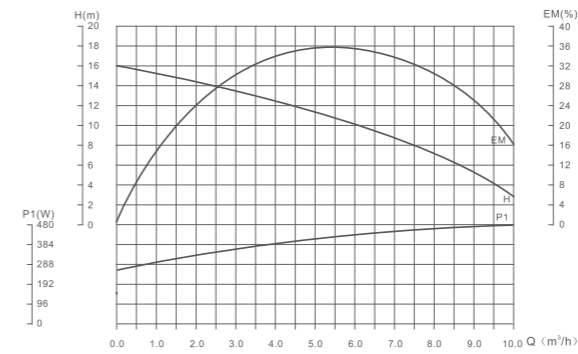
LRS40-370S



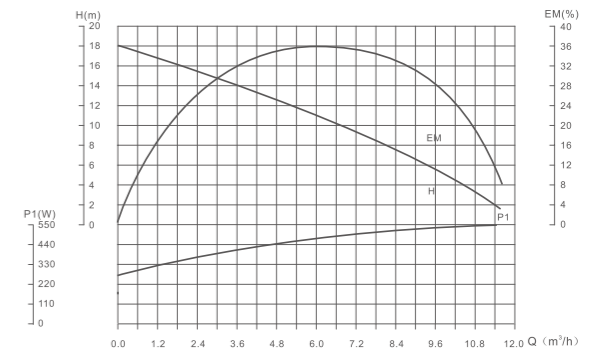
LRS40-550S



LRS40-750S



LRS40-1100S



Technical parameter

Model	Power	Max.Flow	Max.Head	Voltage			Material of pump body			Dimension(mm)					
	(W)	(m³/h)	(m)	220V/50Hz	220V/60Hz	127V/60Hz	Cast Iron	Brass	Stainless steel	L	B	B1	H	H1	G
LRS25-370S	370	7.8	10							195	162	95	232	192	1"
LRS32-370S	370	8.2	10							220	165	95	240	190	1½"
LRS40-370S	370	8.2	10							220	165	95	240	190	2"
LRS25-550S	550	8.6	12							195	162	95	232	192	1"
LRS32-550S	550	9	12							220	165	95	240	190	1½"
LRS40-550S	550	9	12	•	•	•	•	•	•	220	162	95	240	190	2"
LRS32-750S	750	11	16							250	200	120	290	234	1½"
LRS40-750S	750	11	16							250	200	120	290	234	2"
LRS32-1100S	1100	11.5	18							250	200	120	290	234	1½"
LRS40-1100S	1100	11.5	18							250	200	120	290	234	2"

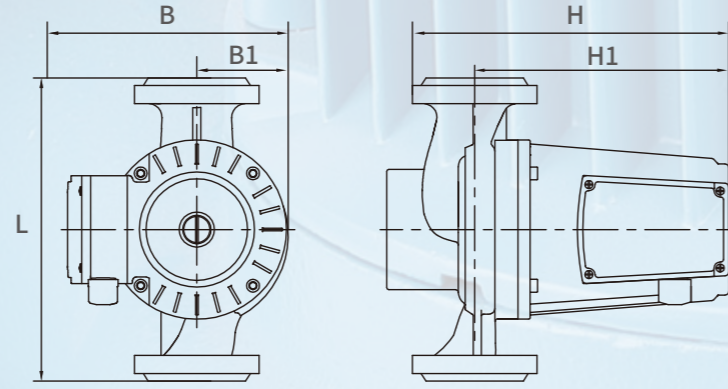
LRS-F Large circulation pump series

Suitable fluids

- ☉ Heating water
- ☉ Water/glycol mixtures max. mixing ratio 1:1

Performance

- ☉ Fluid temperature range: 0°C - 110°C
- ☉ Max. working pressure: 10bar

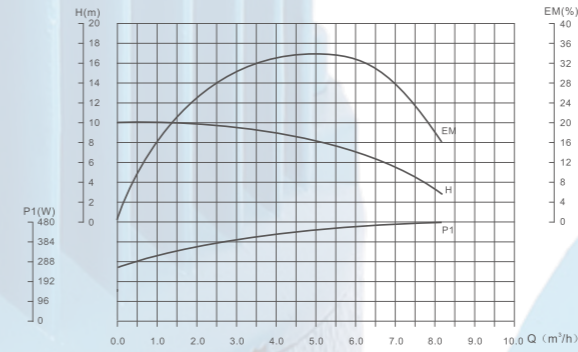


LRS50-1500F

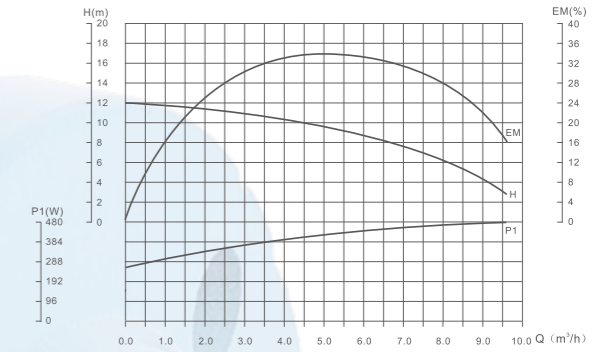


LRS65-2200XF

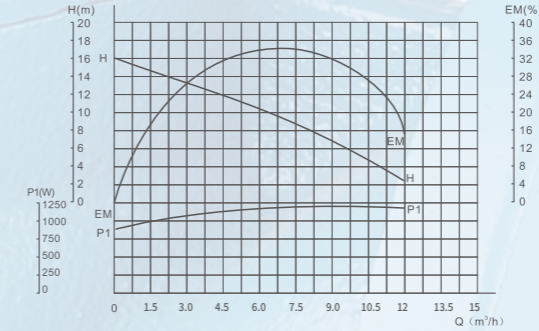
LRS40-370F



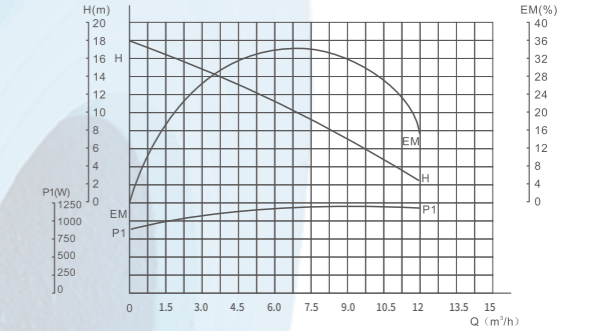
LRS40-550F



LRS50-750F



LRS50-1100F



Technical parameter

Model	Power (W)	Max. Flow (m³/h)	Max. Head (m)	Voltage			PUMP Dimension(mm)					Flange Dimension(mm)	
				220V/ 50Hz	220V/ 60Hz	380V/ 50Hz	L	B	B1	H	G	D1	D2
LRS40-370F	370	8.2	10				220	165	95	240	1½"	100	130
LRS50-370F	370	8.4	10				220	165	95	257	2"	100	130
LRS40-550F	550	9.6	12				220	165	95	240	1½"	100	130
LRS50-550F	550	11	12				220	165	95	258	2"	100	130
LRS40-750F	750	11	16				250	200	120	290	1½"	100	130
LRS50-750F	750	12	16	●	●	●	250	200	120	290	2"	100	130
LRS40-1100F	1100	11.5	18				250	200	120	298	1½"	100	130
LRS50-1100F	1100	12	18				250	200	120	298	2"	100	130
LRS50-1500F	1500	20	15				285	200	120	312	2"	110	140
LRS50-2200F	2200	25	15				305	200	120	315	2"	130	160
LRS65-2200F	2200	25	15				305	200	120	315	2½"	130	160

PUN-B

Canned centrifugal pump series

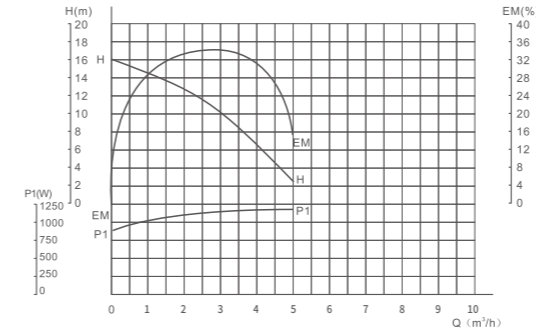


PUN-201B

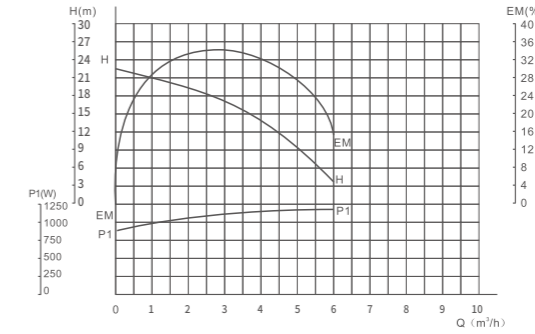


PUN-402B

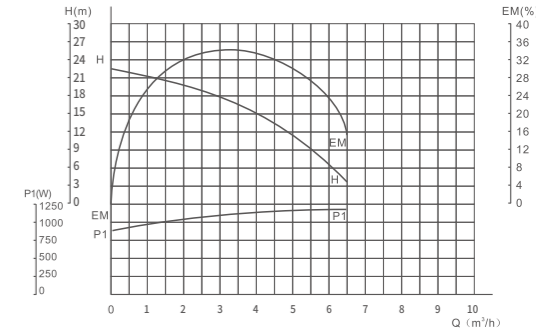
PUN-201B



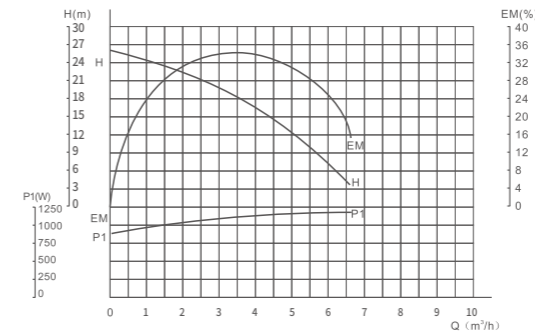
PUN-401B



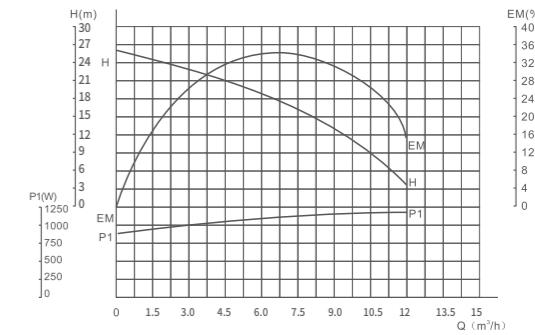
PUN-402B



PUN-601B



PUN-750B



Technical parameter

Model	Power (W)	Max.Flow (m³/h)	Max.Head (m)	Voltage			Dimension(mm)			
				220V/ 50HZ	220V/ 60HZ	127V/ 60HZ	L	B	H	G
PUN-201B	370	5	16	●	●	●	320	175	235	1"
PUN-401B	650	6	22	●	●	●	348	215	265	1"
PUN-402B	680	6.5	22	●	●	●	348	215	265	1¼"
PUN-601B	900	6.6	26	●	●	●	348	215	265	1"
PUN-750B	1100	12	26	●	●	●	348	215	265	1¼"

LRS-AUTO -9/-11/-12/-15

Automatic circulation pump series



LRS15/9-160T



LRS15/10S-160G



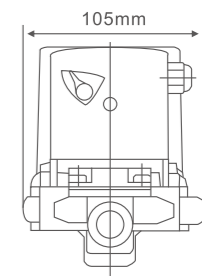
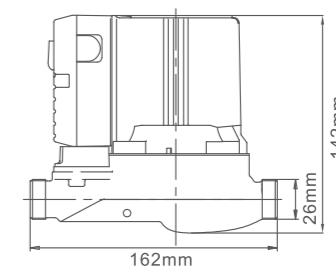
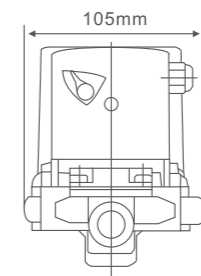
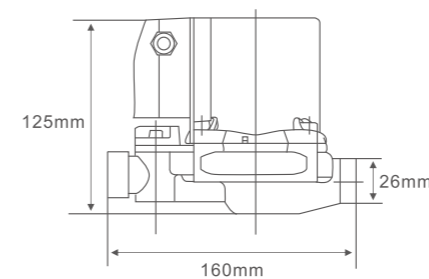
LRS15/9B-160G



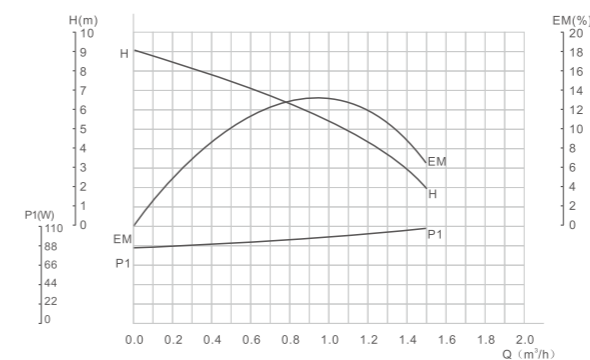
LRS20-15-200W



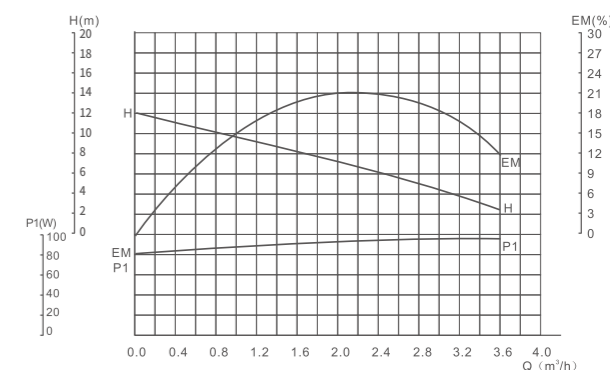
LRS20-12-200G



LRS15/9



LRS20/12



Technical parameter

Model	Power	Max.Flow	Max.Head	Voltage			Pump housing design			Dimension(mm)			
	(W)	(m³/h)	(m)	220V/ 50HZ	220V/ 60HZ	127V/ 60HZ	G type	T type	W type	L	B	H	G
LRS15/9-160G	120	1.5	9	●	●	●	●	●	●	160	107	130	3/4 1"
LRS20/9-160G				●	●	●	●	●	●	●	●	●	●
LRS15/11-160G	165	1.8	11	●	●	●	●	●	●	160	107	140	3/4 1"
LRS20/11-160G				●	●	●	●	●	●	●	●	●	●
LRS20/12-200G	280	3.6	12	●	●	●	●	●	●	200	130	154	1"
LRS20/15-200G	305	4	15	●	●	●	●	●	●	200	136.5	160	1"

EXTERNAL WATER FLOW SWITCH

Automatic circulation pump series



LRSW20/12-180G



LRSW15/9-130G

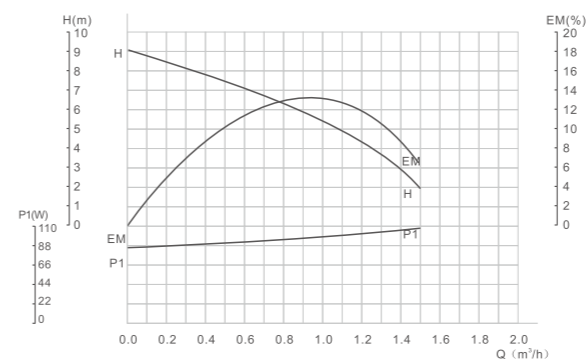


LRSW20/15-180G

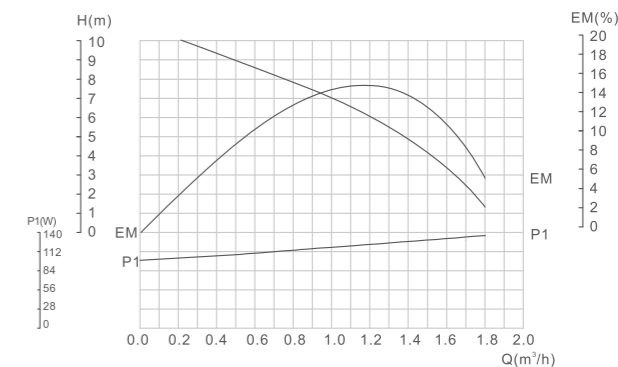


LRSW20/15B-180W

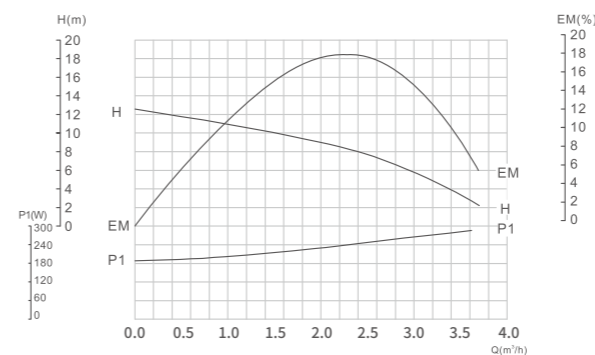
LRSW15/9-140G



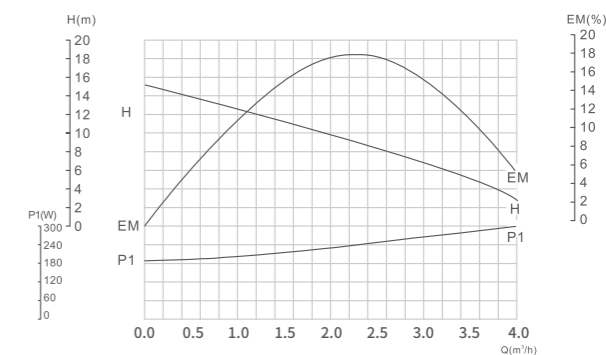
LRSW15/11-140G



LRSW20/12-180G



LRSW20/15-180G



Technical parameter

Model	Power	Max.Flow	Max.Head	Voltage			Pump housing design			Dimension(mm)			
	(W)	(m³/h)	(m)	220V/50HZ	220V/60HZ	127V/60HZ	G type	T type	W type	L	B	H	G
LRSW15/9-140G	120	1.5	9	●	●	●	●	●	●	140	125	130	3/4"
LRSW15/11-140G	165	1.8	11	●	●	●	●	●	●	140	135	130	3/4"
LRSW20/12-180G	280	3.6	12	●	●	●	●	●	●	180	158	160	1"
LRSW20/15-180G	305	4	15	●	●	●	●	●	●	180	170	160	1"

Automatic booster pump series

OJ15GR-18S



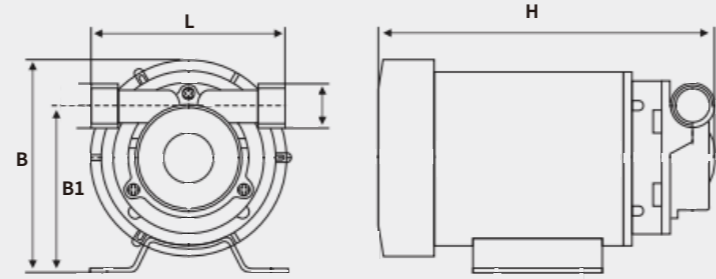
OJ15-10B



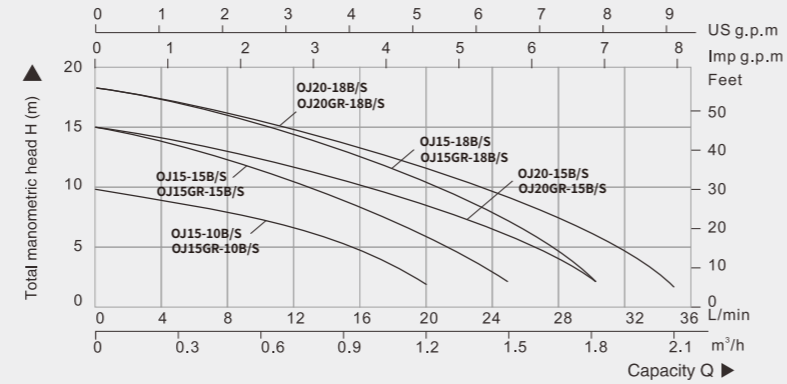
Stainless steel



Brass



PERFORMANCE CHART

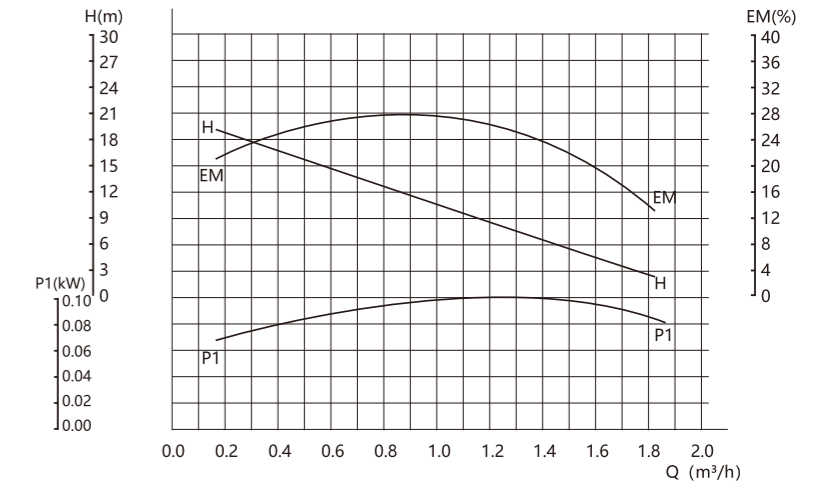
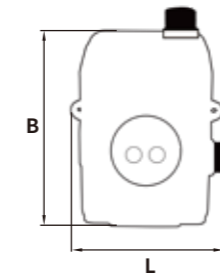


Model	Power (W)	Max.Flow (L/min)	Max.Head (m)	Rated.Flow (L/min)	Rated.Head (m)	Voltage			Material of pump body		Dimension(mm)				
						220V/50Hz	220V/60Hz	127V/60Hz	Brass	Stainless steel	L	B	B1	H	G
OJ15-10B/S	90	20	10	10	8						98	85	70	178	3/4"
OJ15-15B/S	120	25	15	13	10						110	92	76	200	3/4"
OJ20-15B/S	120	25	15	13	10						110	92	76	200	1"
OJ15-18B/S	260	30	18	15	13						112	126	91	200	3/4"
OJ20-18B/S	260	30	18	18	13						112	126	91	200	1"
OJ15GR-10B/S	90	20	10	10	8	•	•	•	•	•	98	85	70	178	3/4"
OJ15GR-15B/S	120	25	15	13	10						110	92	76	200	3/4"
OJ20GR-15B/S	120	25	15	13	10						110	92	76	200	1"
OJ15GR-18B/S	260	30	18	15	13						112	126	91	200	3/4"
OJ20GR-18B/S	260	30	18	18	13						112	126	91	200	1"

24V PERMANENT MAGNET FREQUENCY BOOSTER PUMP



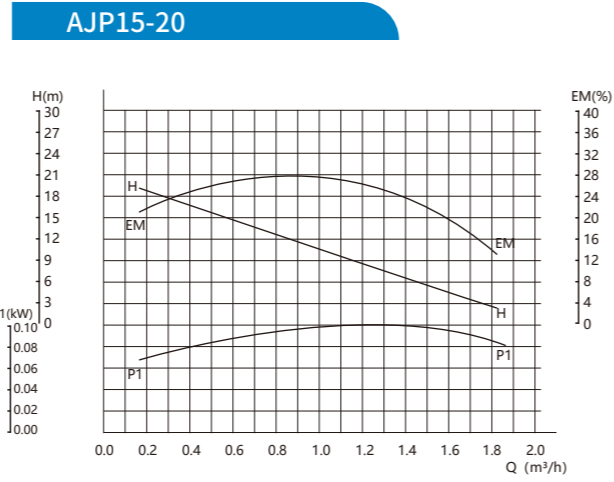
24V AJP12-18



Technical parameter

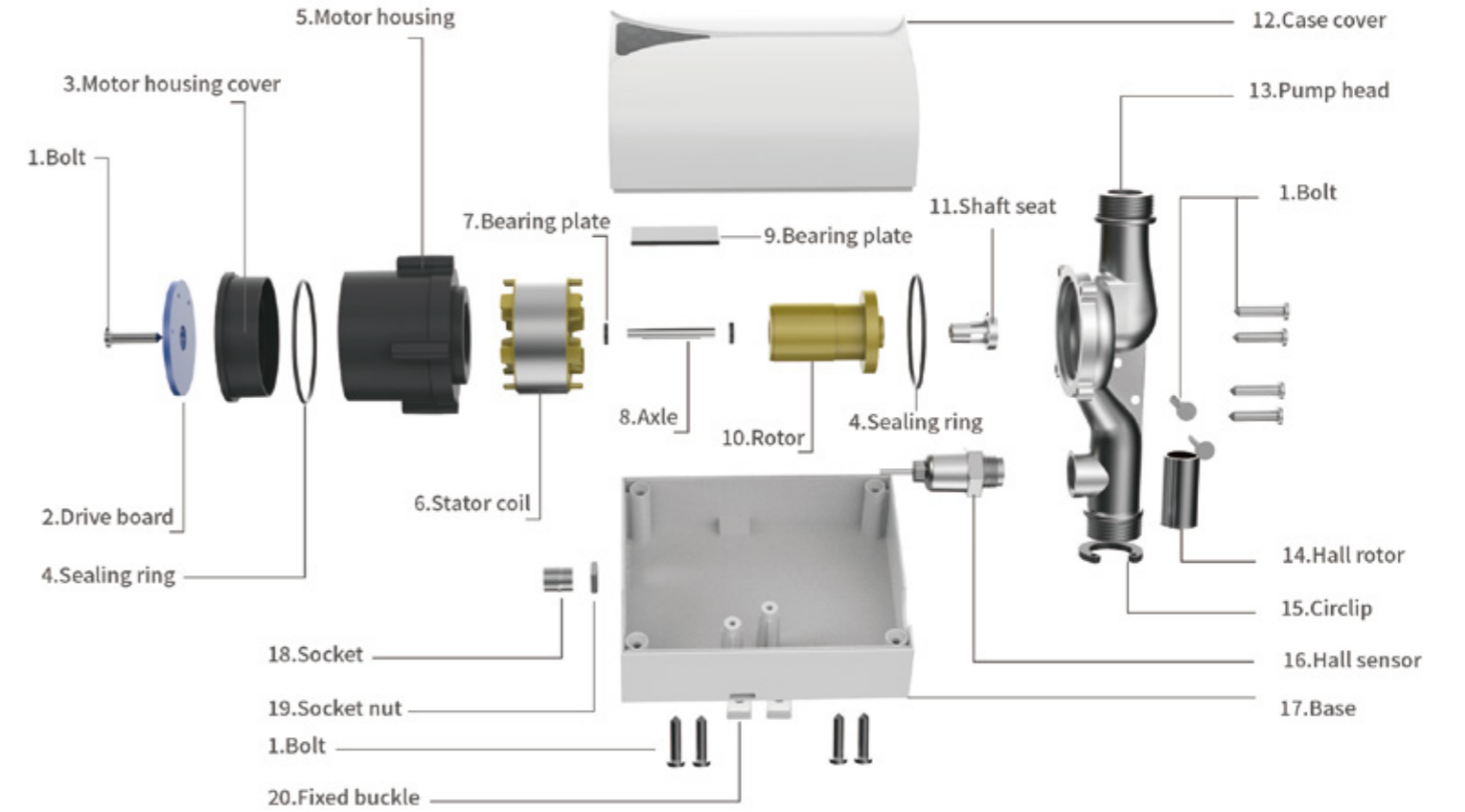
Model	Power (W)	Max.flow (m³/h)	Max.head (M)	Voltage (V)	Frequency (HZ)	Dimension(mm)			
						L	B	H	G
24V AJP12-18	70	0.9	18	24	50/60	143	114	90	1/2"

36V PERMANENT MAGNET FREQUENCY BOOSTER PUMP



Technical parameter

Model	Power	Max.flow	Max.head	Voltage	Frequency	Dimension(mm)			
	W	m³/h	M			L	B	H	G
AJP15-20A	85	1.9	20	36	50/60	160	110	80	¾"
AJP15-20B									





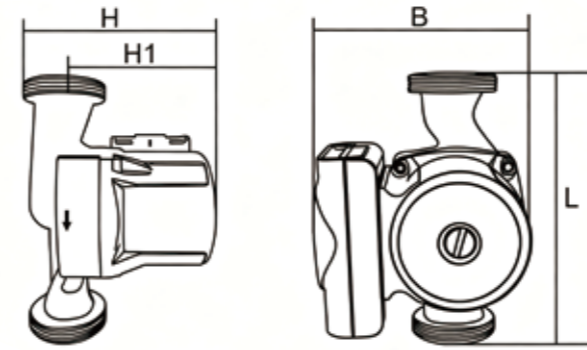
FA Series



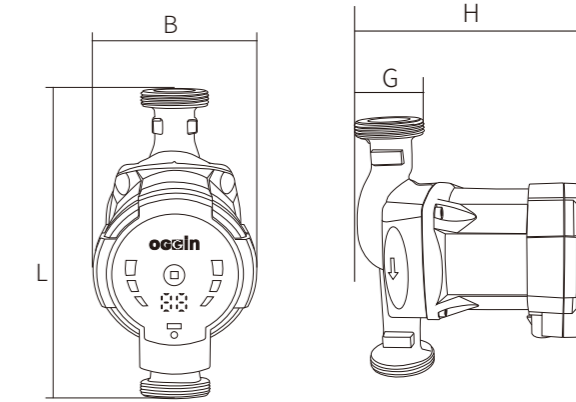
FB Series

Setting	Pump curve	Function
PP	proportional Pressure curve	The head The pump enters energy-saving mode pressure is reduced at falling heating demand and increased at rising heating demand
CP	constant Pressure curve	The head (pressure) is kept constant, irrespective of the heating demand
III	Speed III	Pump runs at a constant speed and consequently on a constant curve. In speed III, the pump is set to run on the Max. curve under all operating conditions. Quick venting of the pump can be obtained by setting the pump to speed III for a short period.
II	Speed II	Pump runs at a constant speed and consequently on a constant curve. In speed II, the pump is set to run on the Medium. curve under all operating conditions.
I	Speed I	Pump runs at a constant speed and consequently on a constant curve. in speed I, the pump is set to run on the Min. curve under all operating conditions.
AUTO (EX-factory Setting)	AUTO	Under "AUTO" mode, the power of pump automatically be up or down according to flow of system in certain condition.
Night mode		Pump runs select to night mode, after one hour the power automatically down, after two hours, it will be down lowest between 5-10 watt, after seven hours, the pump auto mode eliminate and recovery to original condition.

FA Series



FB Series



Technical parameter

Model	Power	Max.flow	Max.head	Voltage			Dimension(mm)					
	W	m ³ /h	M	220V/50HZ	220V/60HZ	127V/60HZ	L	B (FA)	H (FA)	B (FB)	H (FB)	G
AJP20/4FA/FB	5-22	1.8	4	●	●	●	130/180	127	126	92	160	1"
AJP25/4FA/FB	5-22	2.5	4	●	●	●	130/180	127	126	92	160	1½"
AJP32/4FA/FB	5-22	3	4	●	●	●	130/180	127	126	92	160	2"
AJP20/6FA/FB	5-45	2.4	6	●	●	●	130/180	127	126	92	160	1"
AJP25/6FA/FB	5-45	3.5	6	●	●	●	130/180	127	126	92	160	1½"
AJP32/6FA/FB	5-45	3.5	6	●	●	●	130/180	127	126	92	160	2"
AJP20/8FA/FB	5-60	2.9	7.5	●	●	●	130/180	127	126	92	160	1"
AJP25/8FA/FB	5-60	4	7.5	●	●	●	130/180	127	126	92	160	1½"
AJP32/8FA/FB	5-60	4	7.5	●	●	●	130/180	127	126	92	160	2"
AJP20/10FA/FB	5-90	3.9	10	●	●	●	130/180	127	126	92	160	1"
AJP25/10FA/FB	5-90	4.9	10	●	●	●	130/180	127	126	92	160	1½"
AJP32/10FA/FB	5-90	5.2	10	●	●	●	130/180	127	126	92	160	2"
AJP20/12FA/FB	5-120	4.2	12	●	●	●	130/180	127	126	92	160	1"
AJP25/12FB/FB	5-120	5.5	12	●	●	●	130/180	127	126	92	160	1½"
AJP32/12FA/FB	5-120	6	12	●	●	●	130/180	127	126	92	160	2"

FREQUENCY CIRCULATION PUMP

Product Structure

1. Structure: The product is made up of pump and single-phase shield motor. The pump is made up of impeller, body of pump, etc. Motor consists of stator, rotor shield cover, deflating bolt and so on.
2. Tightness: The pump isn't sealed with machinery sealing. The stator and rotor of motor are sealed with stainless steel cover. Other parts are all sealed with heat-resisting rubber facing ring, so that there's no leakage.
3. Lubricate and cool: Inside circulation way is adopted in the product. The water between the stator and the rotor can lubricate and cool the motor as the lubricant and coolant.



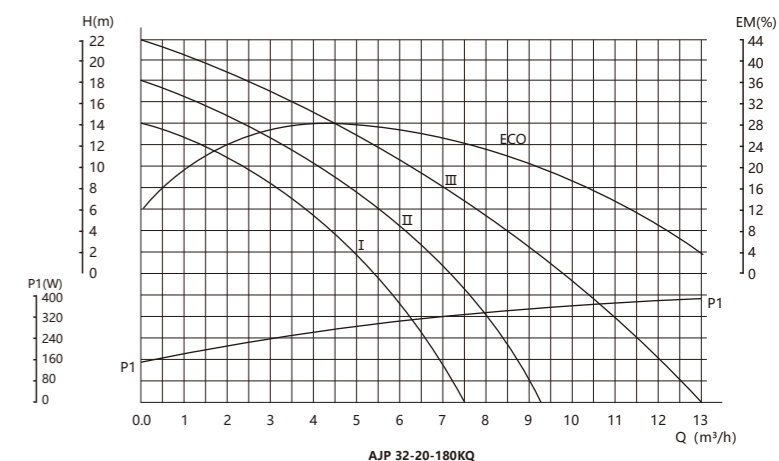
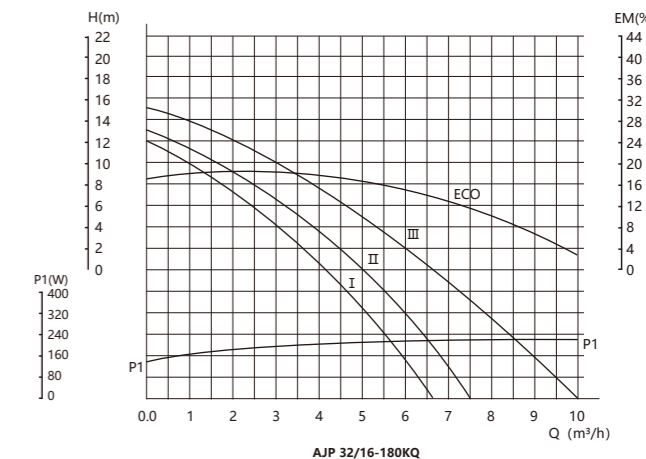
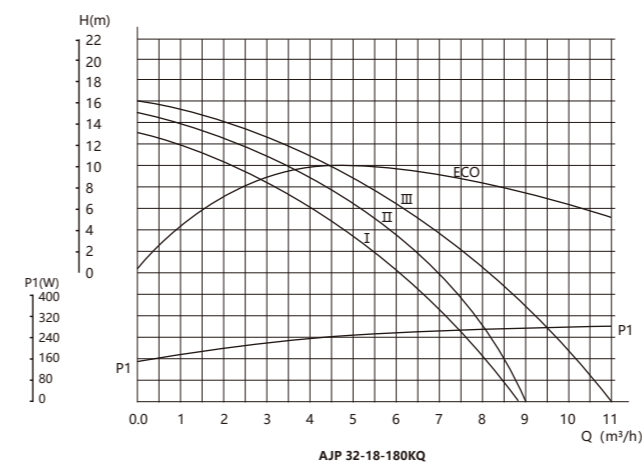
Operation Guide

	Start-stop	Under model, start and stop the water pump
	Home	Under Model, the water pump from large power - ECO - medium power - small power mode in sequence.
III	Speed III	Pump runs at a constant speed and consequently on a constant curve. In speed III, the pump is set to run on the Max. curve under all operating conditions. Quick venting of the pump can be obtained by setting the pump to speed III for a short period.
II	Speed II	Pump runs at a constant speed and consequently on a constant curve. In speed II, the pump is set to run on the Medium. curve under all operating conditions.
I	Speed I	Pump runs at a constant speed and consequently on a constant curve. In speed I, the pump is set to run on the Min. curve under all operating conditions.
ECO	ECO	Under "ECO" mode, the power of pump automatically be up or down according to flow of system in certain condition.

Conditions of use

Clean, non-corrosive and non-explosive liquids, non-solid particles, non-fibrous substances and mineral oils in the heating system, the water quality should reach acceptable recognized standards

- Temperature of conveying medium: 2-95°C
- Maximum temperature of bad condition: <50°C
- Maximum system pressure: ≤6bar
- Input voltage: 165V-265V



Technical parameter

Model	Power	Rated flow	Rated head	Max. flow	Max. head	Voltage			Dimension (mm)			
	W	m³/h	M	m³/h	M	220V/50HZ	220V/60HZ	127V/60HZ	L	B	H	G
AJP25/16-180KQ	200	5.5	7.5	8	16	●	●	●	180	145	170	1½"
AJP32/16-180KQ	200	6.5	6	10	15	●	●	●	180	150	170	2"
AJP40/16-180KQ	200	6.5	6	10	15	●	●	●	180	150	170	2"
AJP25/18-180KQ	280	6	9	10	18	●	●	●	180	145	170	1½"
AJP32/18-180KQ	280	7	8	12	16	●	●	●	180	150	170	2"
AJP40/18-180KQ	280	7	8	12	16	●	●	●	180	150	170	2"
AJP25/20-180KQ	370	7	11	11.5	24	●	●	●	180	145	170	1½"
AJP32/20-180KQ	370	8	10	13	22	●	●	●	180	150	170	2"
AJP40/20-180KQ	370	8	10	13	22	●	●	●	180	150	170	2"

UPS

WALL MOUNTED BOILER PUMP



UPS15-60B



UPS15-60C



UPS15-60E

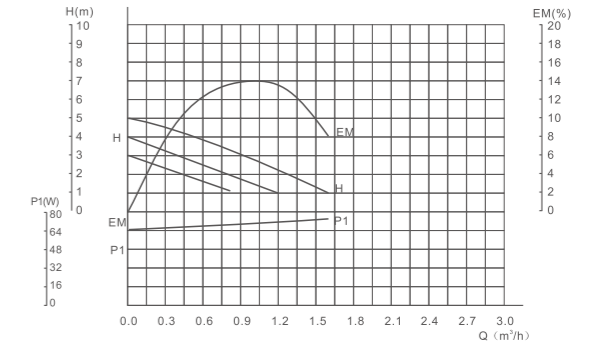


UPS15-60A

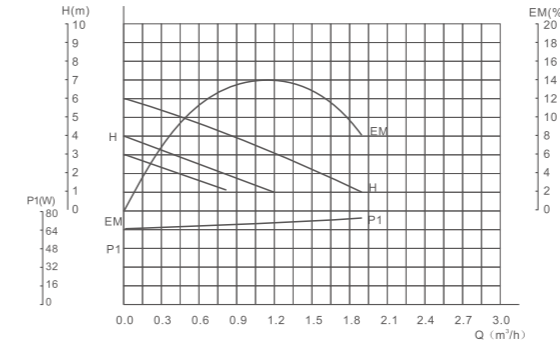


UPS15-60D

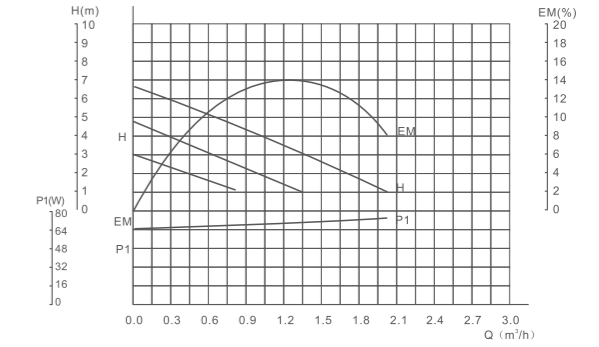
UPS15-50



UPS15-60



UPS15-70



Technical parameter

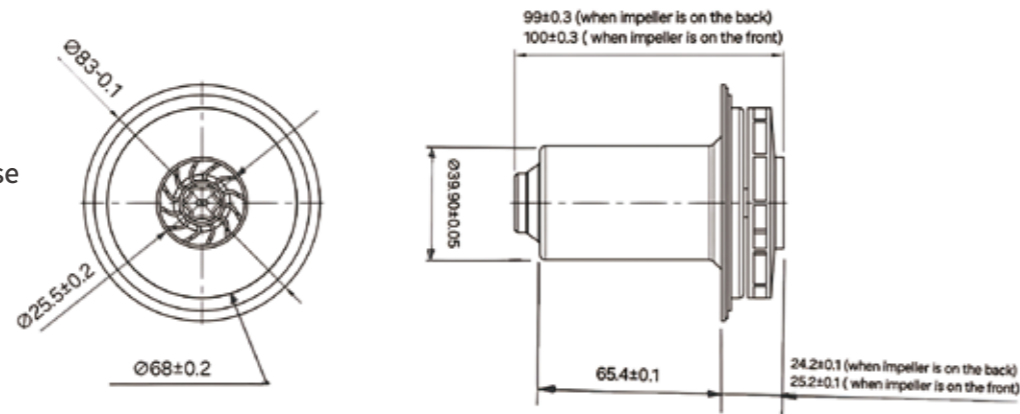
Model	Input power W	Current A	Capacitor uF	Max.flow M³/h	Max.head M	Pump head M
UPS15-50A	80/65/50	0.36/0.30/0.23	2.5	1.66	5	0~5
UPS15-60A	100/80/55	0.45/0.36/0.26	3	1.88	6	0~6
UPS15-70A	120/100/70	0.55/0.45/0.32	3	1.96	6.7	0~7

ROTOR



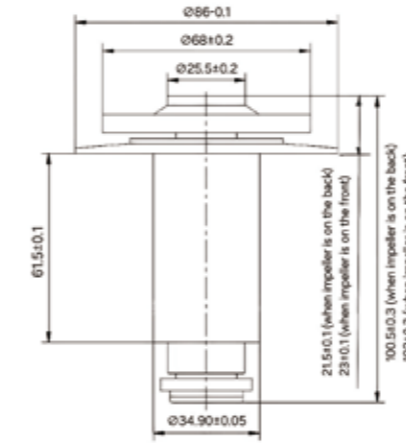
IRG

IRG Rotor
Impeller Profile & Rotation is Clock wise



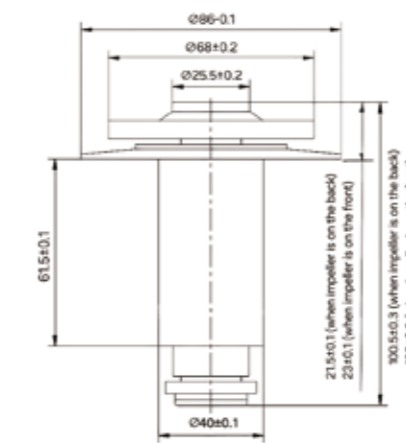
Wilo LRS15-5S

Impeller profile & Rotation is Clock wise



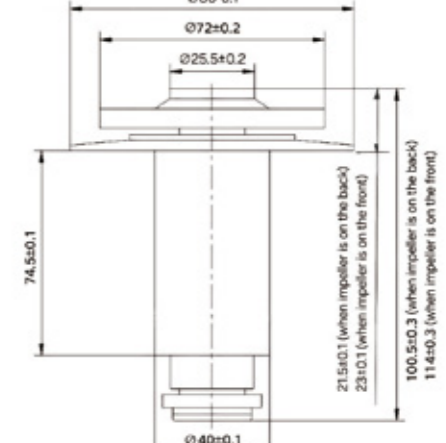
Wilo LRS15-6S

Impeller profile & Rotation is Clock wise



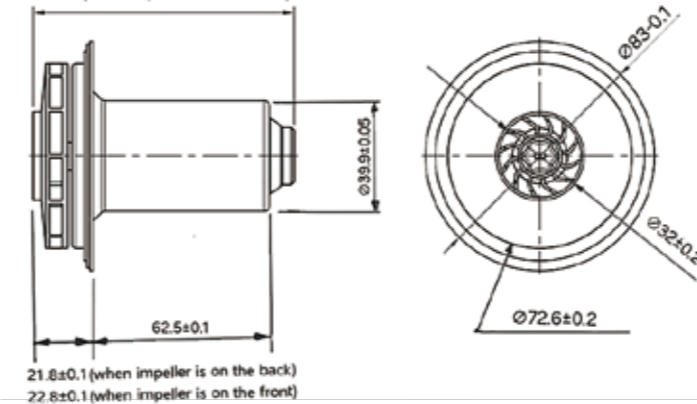
Wilo LRS15-7S

Impeller profile & Rotation is Clock wise



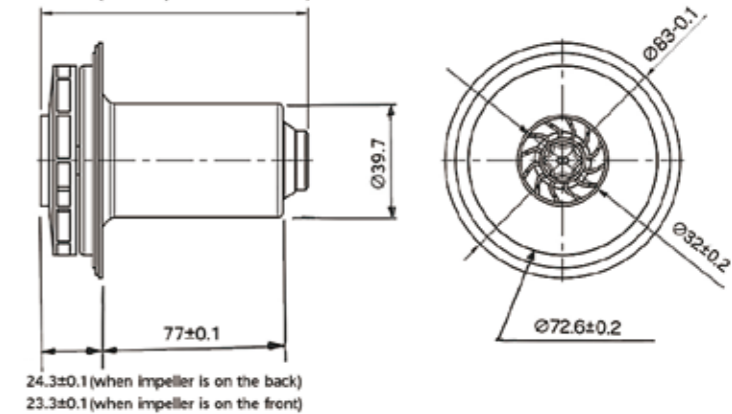
UPS15-50 UPS15-60

96 ± 0.3 (when impeller is on the back)
 97 ± 0.3 (when impeller is on the front)



UPS15-70

113 ± 0.1 (when impeller is on the back)
 114 ± 0.1 (when impeller is on the front)



Pressure controller for water pump

Application Limits

OGGIN pressure controller designed for different types of pump. They are popular accepted in the global market, due to its stable performance and various configuration details, they can achieve different pressure requirements. They help the pump work automatically and save the electricity cost of the pump's operation.



EPC-1



EPC-5

Performance Data

EPC-1			
Rated Voltage	220-240V	110-120V	110-240V
Power Frequency	50/60Hz	50/60Hz	50/60Hz
Max Power	1.1kW/1.5kW	0.55kW	0.55kW/1.1kW
Starting Pressure Setting	1.2bar,1.5bar,2.2bar	1.2bar,1.5bar,2.2bar	1.2bar,1.5bar,2.2bar
Max Working Pressure	10bar	10bar	10bar
Connection Thread	G1", G1¼",G1½",NPT1"	G1", G1¼",G1½",NPT1"	G1", G1¼",G1½",NPT1"
Protection Rating	IP65	IP65	IP65
Max Working Temperature	55°C	55°C	55°C

EPC-5			
Rated Voltage	220-240V	110-120V	110-240V
Power Frequency	50/60Hz	50/60Hz	50/60Hz
Max Power	1.1kW	0.55kW	0.55kW/11.1kW
Starting Pressure Setting	1.2bar,1.5bar,2.2bar	1.2bar,1.5bar,2.2bar	1.2bar,1.5bar,2.2bar
Max Working Pressure	10bar	10bar	10bar
Connection Thread	G1"	G1"	G1"
Protection Rating	IP65	IP65	IP65
Max Working Temperature	55°C	55°C	55°C

Integrated production process

