

COMPANY PROFILE

公司简介



佛山市天之宝装饰材料有限公司坐落于南海狮中工业园,成立于2007年,是pvc装饰膜行业领跑者。作为中国建材市场协会集成墙面分会会员、集成墙面行业优秀供应商、集成墙面官网重点推荐企业,天之宝始终秉承专注产品与服务的宗旨,用持之以恒、积极进取的态度,紧贴时代脉搏的研发精神,打造行业品牌,用心为客户创造超凡价值。天之宝在高技术高附加值上下功夫,狠抓技术引进,技术改造和技术进步,以科技为先导,以当代国际先进技术和质量水平为目标,专注pvc装饰膜生产创新,为适应市场发展需要,天之宝不断加大投入,扩大建设,现拥有一万多平方米现代化厂房,三条进口先进生产线,一大批高素质的管理技术人员和员工,月产装饰片在150万(M)以上,为国内规模相当的木纹装饰片生产企业,能够为广大客户提供充裕的供货能力及满足特殊产品的技术要求,并始终坚持“品质为先,客户至上”的宗旨,以先进的理念、科学严谨的管理手段,生产出价廉物美的产品,热诚为广大客户服务。天之宝为抢占市场的制高点,夺取市场的主动权,实施创名牌战略。坚持在高技术高附加值上下功夫,狠抓技术引进,技术改造,以科技为先导,以当代国际先进技术和质量水平为目标,依靠自身优势走引进、消化、吸收、创新的路子,使天之宝能够始终保持强有力的竞争态势,不断向市场推进,以高品质赢取好品牌。

经过多年来的不懈努力,天之宝获得长足的发展。使技术、设备、产量、品质、服务均跃上一个新的台阶,在市场上、在客户中,打造出“天之宝”品牌,获得良好口碑,并借强大的企业实力,优质的产品,走出国门走向世界,产品远销国内外。天之宝坚持学习贯彻党的一带一路政策,多次参加国内外有影响力的展会:北京、上海、广州、嘉兴、南宁、新德里、伊朗、俄罗斯、土耳其等等,并与当地客户合作共赢,获得了国内外客户的诸多好评。



DESIGN

COMES FROM ART

CATALOGUE

名称	型号	页码	名称	型号	页码	名称	型号	页码
鱼骨木	F91001-1	2	布莱雅布纹	F9003-4	30	克里斯橡木	F91006-2	51
鱼骨木	F91001-3	2	布莱雅布纹	F9003-6	30	轻纱布纹	F9006-8	53
鱼骨木	F91001-5	2	布莱雅布纹	F9003-7	30	轻纱布纹	F9006-9	53
奈斯橡木	F91002-1	4	布莱雅	F9003-3	31	经典鱼肚	F91003-1	55
奈斯橡木	F91002-3	7	布莱雅	F9003-1	31	大理石纹	F9003H-1	56
奈斯橡木	F91002-4	8	布莱雅	F9003-2	31	大理石纹	F9003H-2	56
奈斯橡木	F91002-5	8	氧气布纹	F9004-2	33	大理石纹	F9003H-4	57
奈斯橡木	F91002-6	11	氧气布纹	F9004-5	33	大理石纹	F9003H-6	57
奈斯橡木	F91002-7	11	氧气布纹	F9004-7	34	轻纱布纹	F9006-1	58
典雅橡木	F91004-2	13	氧气布纹	F9004-8	34	轻纱布纹	F9006-2	58
典雅橡木	F91004-3	13	锦绣布纹	F9005-1	37	轻纱布纹	F9006-3	58
典雅橡木	F91004-5	13	锦绣布纹	F9005-2	37	轻纱布纹	F9006-4	59
科技木	F91005-1	15	锦绣布纹	F9005-3	37	轻纱布纹	F9006-5	59
科技木	F91005-4	15	锦绣布纹	F9005-5	38	轻纱布纹	F9006-6	60
科技木	F91005-5	16	锦绣布纹	F9005-6	39	轻纱布纹	F9006-7	60
科技木	F91005-6	16	银梨	F9001-1	40		F92008-3	61
科技木	F91005-2	18	银梨	F9001-2	40		F92008-6	61
科技木	F91005-3	18	格调布纹	F9007-4	42		F92008-1	63
科技木A	F3186-11	19	格调布纹	F9007-2	43		F92008-2	63
科技木A	F3186-12	19	格调布纹	F9007-3	43		F92008-5	63
科技木A	F3186-3	20	格调布纹	F9007-5	43		F92005-5	64
	TA6024-47	21	银梨	F9001-3	45		F92005-2	64
	TA6038-47	21	银梨	F9001-5	45		F92005-1	64
龙缙曼	F92001-1	22	银梨	F9001-10	45		F92005-3	65
龙缙曼	F92001-6	22	银梨	F9001-8	46		F92005-6	65
龙缙曼	F92001-2	22	银梨	F9001-7	46		F92005-7	65
砂砾岩	F91009-6	24	银梨	F9001-4	46		F93001-1	66
砂砾岩	F91009-1	25	摩尔橡木	F91008-2	47		F93001-2	66
砂砾岩	F91009-2	25	摩尔橡木	F91008-3	47		F93001-3	66
砂砾岩	F91009-3	25	摩尔橡木	F91008-4	47	麻布纹	F9002-1	68
贵妃纹	F91007-1	27	克里斯橡木	F91006-5	49	麻布纹	F9002-4	70
贵妃纹	F91007-2	27	克里斯橡木	F91006-1	50	麻布纹	F9002-5	70
贵妃纹	F91007-3	27	克里斯橡木	F91006-4	50	麻布纹	F9002-6	71
贵妃纹	F91007-6	29	克里斯橡木	F91006-3	51			



M 鱼骨木

N F91001-1

Life is a journey to experience to learn and to enjoy.



M 鱼骨木

N F91001-3

Life is a journey to experience to learn and to enjoy.



M 鱼骨木

N F91001-5

Life is a journey to experience to learn and to enjoy.

因设计/印刷等因素存在一定色差，一切以实物为准！



CAN NOT
*BE PERFECT,
BUT TO PURSUE*



High quality environmental protection

3



M 奈斯橡木

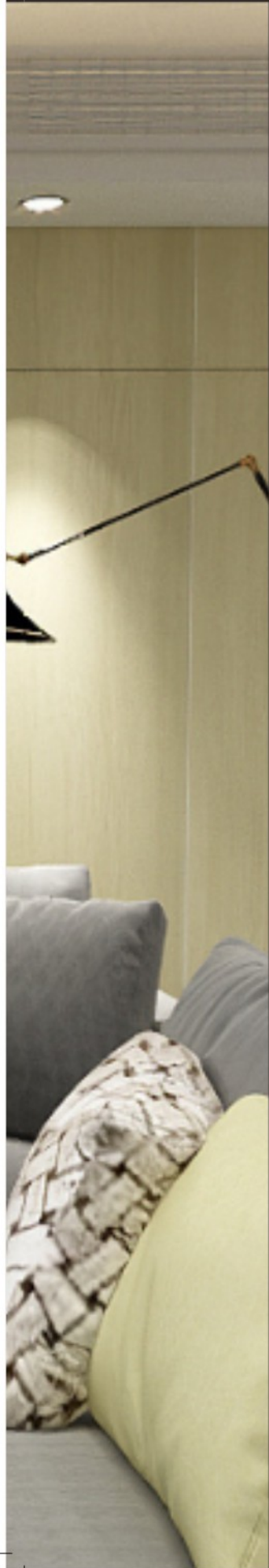
N F91002-1

Life is a journey to experience to learn and to enjoy.

- 
- ◆ 服务为荣
 - ◆ 品质第一
 - ◆ 德若诚信
 - ◆ 合作共赢

FAMILY WARMTH





M 奈斯橡木

N F91002-3

Life is a journey to experience to learn and to enjoy.



M 奈斯橡木

N F91002-4

Life is a journey to experience to learn and to enjoy.



M 奈斯橡木

N F91002-5

Life is a journey to experience to learn and to enjoy.

因设计/印刷等因素存在一定色差，一切以实物为准！

PERFECT PERFORMANCE



High quality environmental protection

An aerial photograph of a dense forest. The trees are mostly green, but a significant portion in the center-left area has turned a golden-brown color, indicating autumn. The forest is shrouded in a thick, white mist or fog, which is most prominent in the lower half of the image and around the trees. The overall atmosphere is serene and natural.

NATURAL OXYGEN BAR



M 奈斯橡木 **N** F91002-6

Life is a journey to experience to learn and to enjoy.



M 奈斯橡木 **N** F91002-7

Life is a journey to experience to learn and to enjoy.

因设计/印刷等因素存在一定色差，一切以实物为准！





M 典雅橡木

N F91004-2

Life is a journey to experience to learn and to enjoy.



M 典雅橡木

N F91004-3

Life is a journey to experience to learn and to enjoy.



M 典雅橡木

N F91004-5

Life is a journey to experience to learn and to enjoy.

HIGH DEFINITION WOOD GRAIN





M 科技木

N F91005-1

Life is a journey to experience to learn and to enjoy.



M 科技木

N F91005-4

Life is a journey to experience to learn and to enjoy.



M 科技木

N F91005-5

Life is a journey to experience to learn and to enjoy.



M 科技木

N F91005-6

Life is a journey to experience to learn and to enjoy.



因设计/印刷等因素存在一定色差，一切以实物为准！





M 科技木

N F-91005-2

Life is a journey to experience to learn and to enjoy.

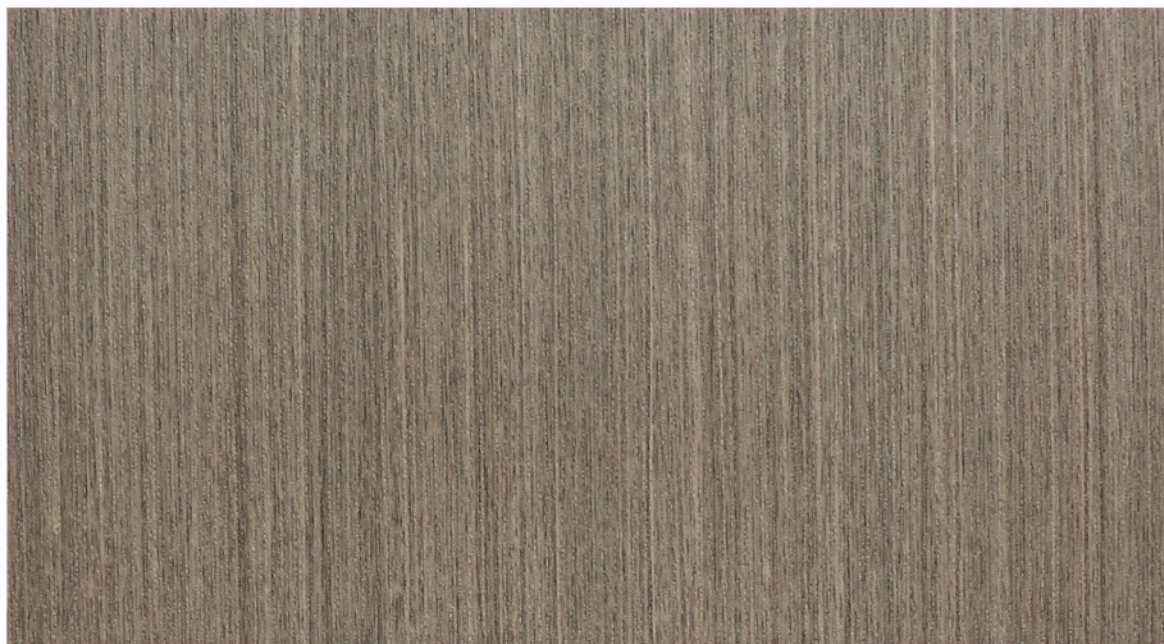


M 科技木

N F-91005-3

Life is a journey to experience to learn and to enjoy.

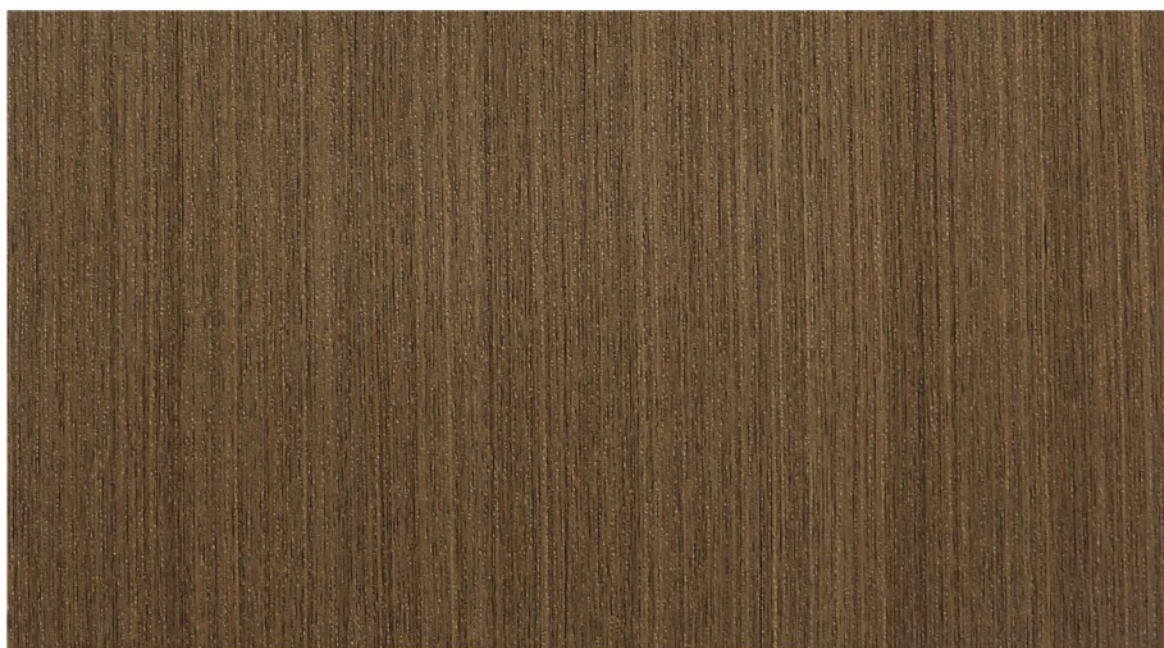
因设计/印刷等因素存在一定色差，一切以实物为准！



M 科技木A

N F-3186-11

Life is a journey to experience to learn and to enjoy.



M 科技木A

N F-3186-12

Life is a journey to experience to learn and to enjoy.

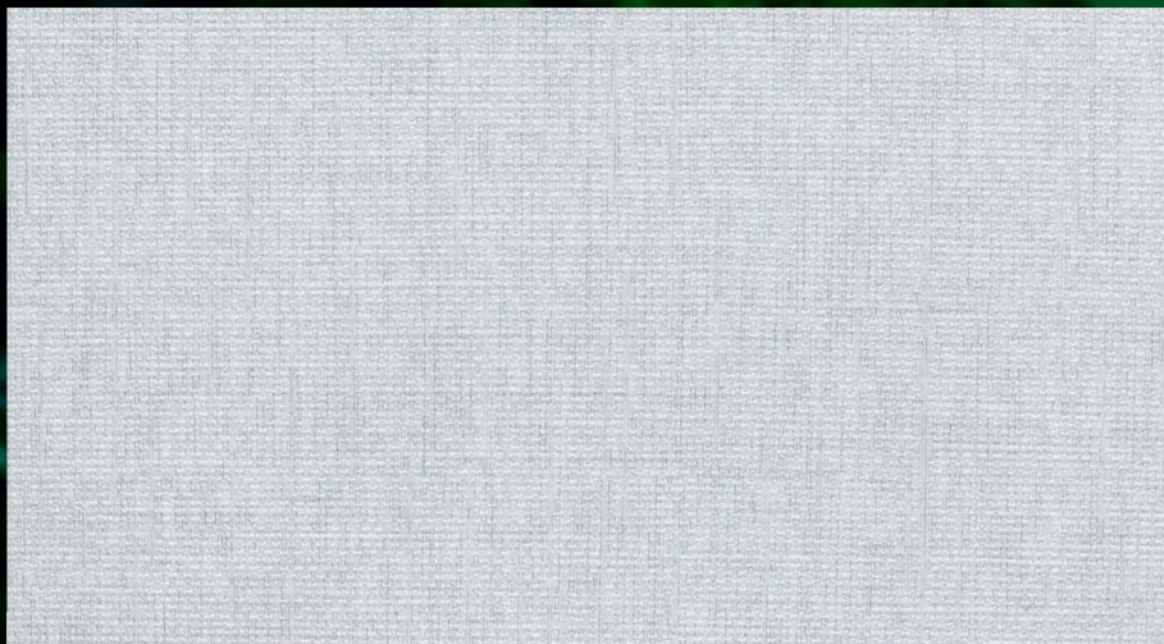


M 科技木A

N F3186-3

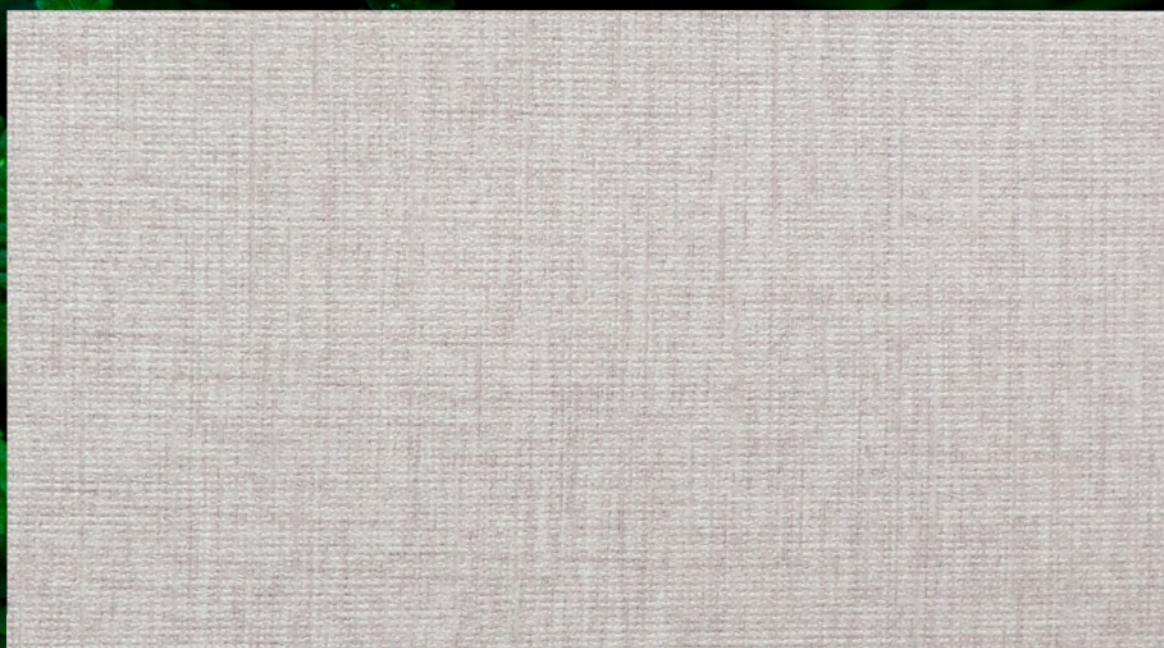
Life is a journey to experience to learn and to enjoy.

因设计/印刷等因素存在一定色差，一切以实物为准！



M TA6024-47

Life is a journey to experience to learn and to enjoy.



M TA6038-47

Life is a journey to experience to learn and to enjoy.

因设计/印刷等因素存在一定色差，一切以实物为准！



M 龙缙曼 **N** F92001-1

Life is a journey to experience to learn and to enjoy.



M 龙缙曼 **N** F92001-6

Life is a journey to experience to learn and to enjoy.



M 龙缙曼 **N** F92001-2

Life is a journey to experience to learn and to enjoy.



ARTISTIC CREATION



M 砂砾岩

N F91009-6

Life is a journey to experience to learn and to enjoy.



M 砂砾岩

N F91009-1

Life is a journey to experience to learn and to enjoy.



M 砂砾岩

N F91009-2

Life is a journey to experience to learn and to enjoy.



M 砂砾岩

N F91009-3

Life is a journey to experience to learn and to enjoy.



MY

**AHEAD OF ME
DREAM IS ALWAYS**



M 贵妃纹

N F91007-1

Life is a journey to experience to learn and to enjoy.



M 贵妃纹

N F91007-2

Life is a journey to experience to learn and to enjoy.



M 贵妃纹

N F91007-3

Life is a journey to experience to learn and to enjoy.

因设计/印刷等因素存在一定色差，一切以实物为准！

LUXURY AND SIMPLICITY





Every day of thy is a leaf in thy history.

M 贵妃纹

N F91007-6





M 布莱雅布纹 **N** F9003-4

Life is a journey to experience to learn and to enjoy.



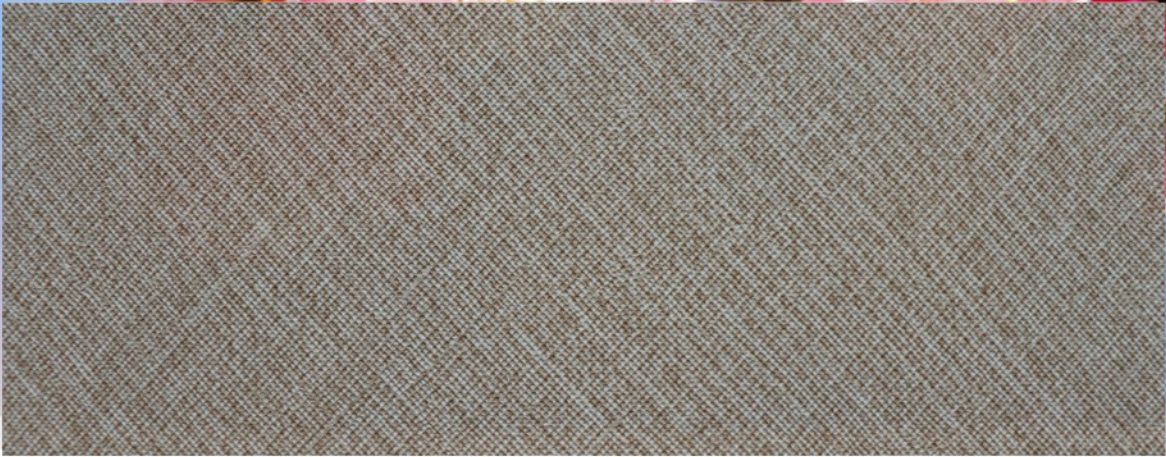
M 布莱雅布纹 **N** F9003-6

Life is a journey to experience to learn and to enjoy.



M 布莱雅布纹 **N** F9003-7

Life is a journey to experience to learn and to enjoy.



M 布莱雅

N F9003-3

Life is a journey to experience to learn and to enjoy.



M 布莱雅

N F9003-1

Life is a journey to experience to learn and to enjoy.



M 布莱雅

N F9003-2

Life is a journey to experience to learn and to enjoy.

BEAUTIFUL



因设计/印刷等因素存在一定色差，一切以实物为准！

32 High quality environmental protection



M 氧气布纹 **N** F9004-2

Life is a journey to experience to learn and to enjoy.



M 氧气布纹 **N** F9004-5

Life is a journey to experience to learn and to enjoy.



M 氧气布纹 **N** F9004-7

Life is a journey to experience to learn and to enjoy.



M 氧气布纹 **N** F9004-8

Life is a journey to experience to learn and to enjoy.

因设计/印刷等因素存在一定色差，一切以实物为准！

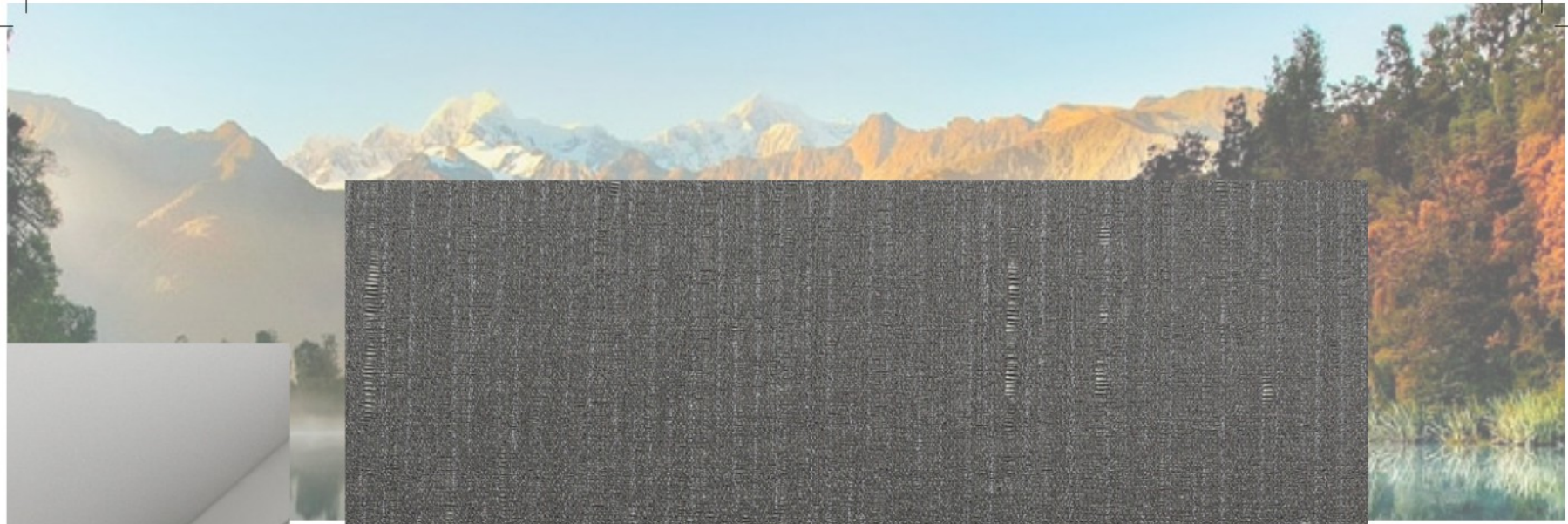
Act
when you
have an idea



So

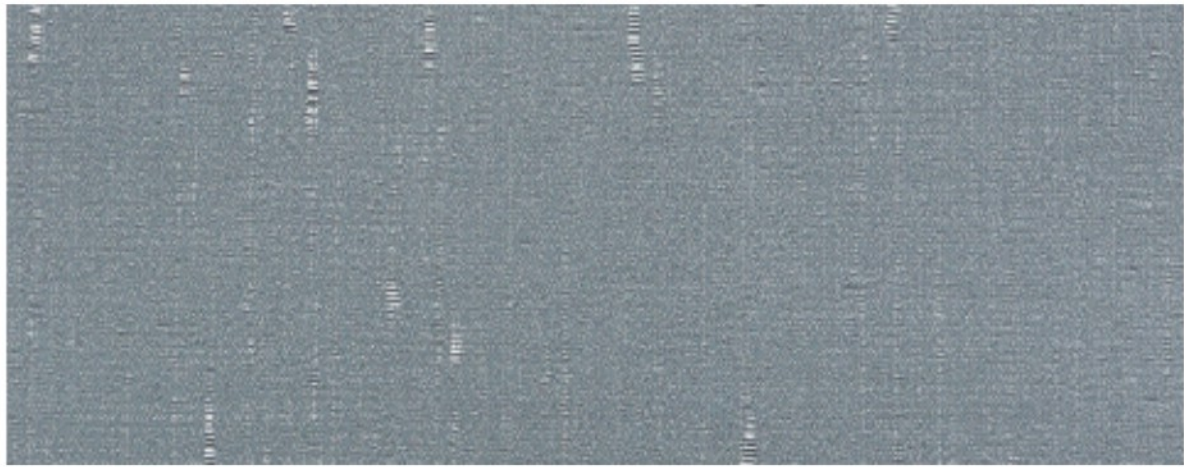


因设计/印刷等因素存在一定色差，一切以实物为准！



M 锦绣布纹 **N** F9005-1

Life is a journey to experience to learn and to enjoy.



M 锦绣布纹 **N** F9005-2

Life is a journey to experience to learn and to enjoy.



M 锦绣布纹 **N** F9005-3

Life is a journey to experience to learn and to enjoy.





M 锦绣布纹

N F9005-5

Life is a journey to experience to learn and to enjoy.





M 锦绣布纹

N F9005-6

Life is a journey to experience to learn and to enjoy.



M 银梨

N F9001-1

Life is a journey to experience to learn and to enjoy.



M 银梨

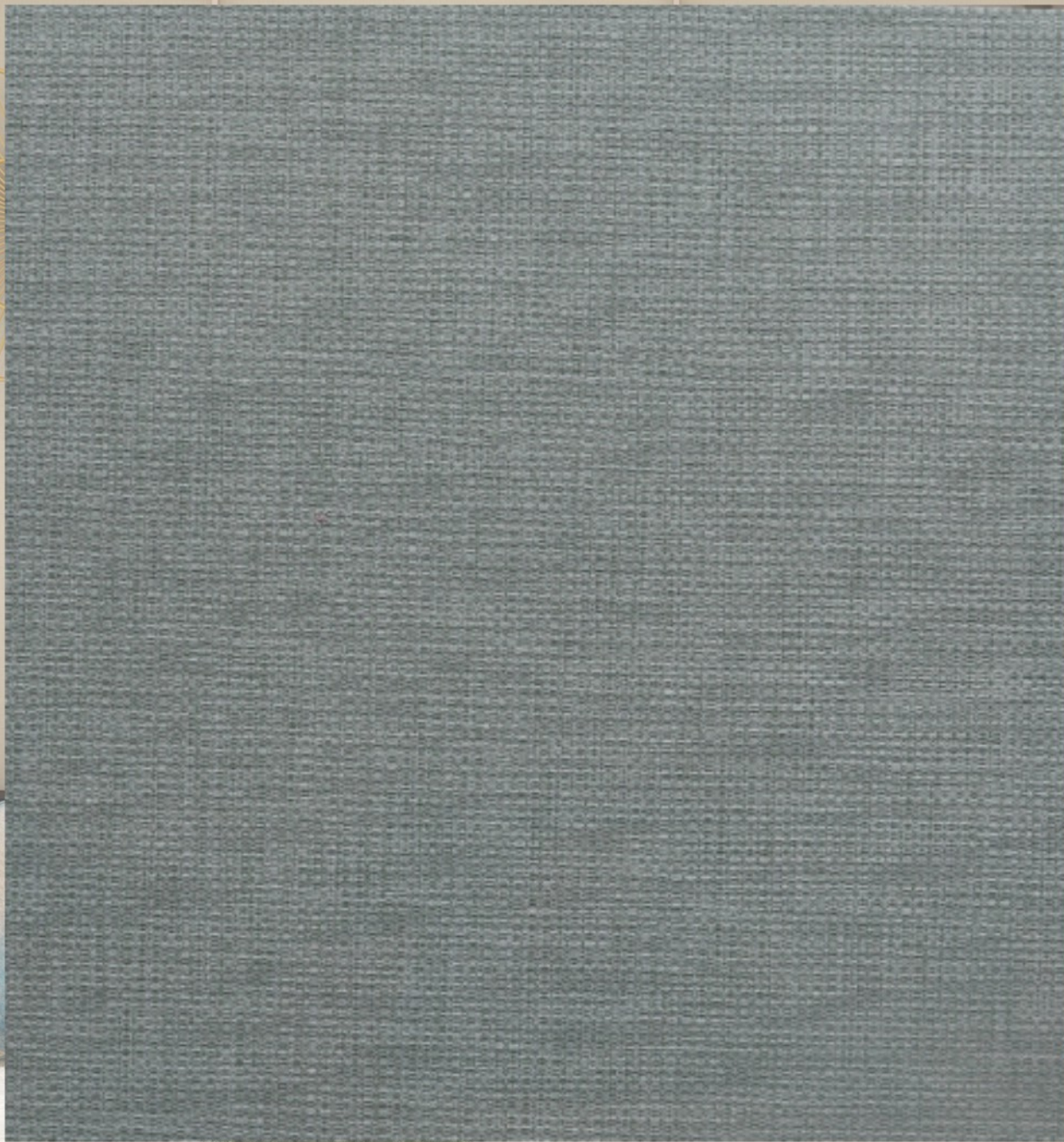
N F9001-2

Life is a journey to experience to learn and to enjoy.

因设计/印刷等因素存在一定色差，一切以实物为准！



SIMPLE



M 格调布纹 **N** F9007-4

Life is a journey to experience to learn and to enjoy.



M 格调布纹 **N** F9007-2

Life is a journey to experience to learn and to enjoy.



M 格调布纹 **N** F9007-3

Life is a journey to experience to learn and to enjoy.



M 格调布纹 **N** F9007-5

Life is a journey to experience to learn and to enjoy.

因设计/印刷等因素存在一定色差，一切以实物为准！





M 银梨

N F9001-3

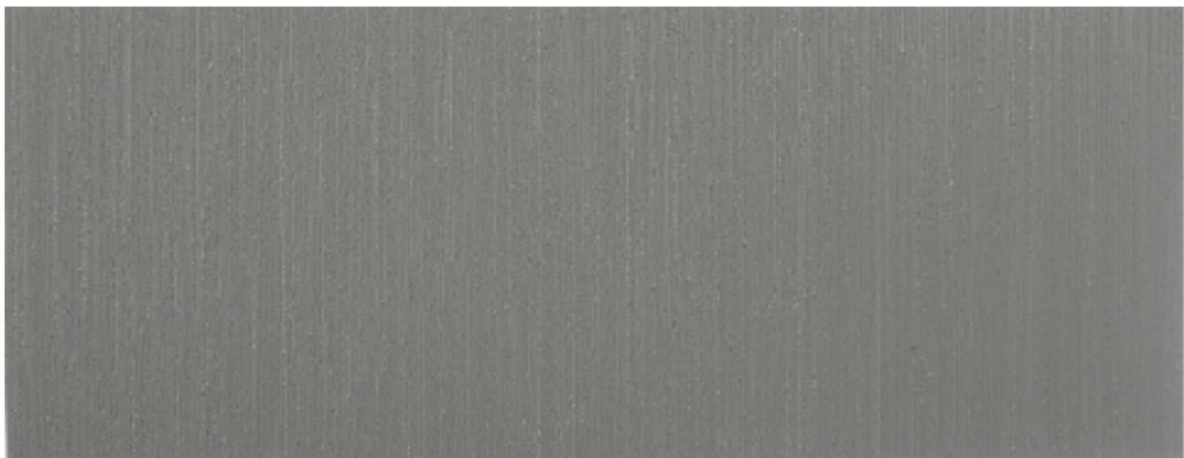
Life is a journey to experience to learn and to enjoy.



M 银梨

N F9001-5

Life is a journey to experience to learn and to enjoy.



M 银梨

N F9001-10

Life is a journey to experience to learn and to enjoy.



M 银梨

N F9001-8

Life is a journey to experience to learn and to enjoy.



M 银梨

N F9001-7

Life is a journey to experience to learn and to enjoy.



M 银梨

N F9001-4

Life is a journey to experience to learn and to enjoy.



M 摩尔橡木 **N** F91008-2

Life is a journey to experience to learn and to enjoy.



M 摩尔橡木 **N** F91008-3

Life is a journey to experience to learn and to enjoy.



M 摩尔橡木 **N** F91008-4

Life is a journey to experience to learn and to enjoy.

因设计/印刷等因素存在一定色差，一切以实物为准！





Every day of thy is a leaf in thy history.

M 克里斯橡木

N F91006-5



M 克里斯橡木 **N** F91006-1

Life is a journey to experience to learn and to enjoy.



M 克里斯橡木 **N** F91006-4

Life is a journey to experience to learn and to enjoy.



M 克里斯橡木 **N** F91006-3

Life is a journey to experience to learn and to enjoy.

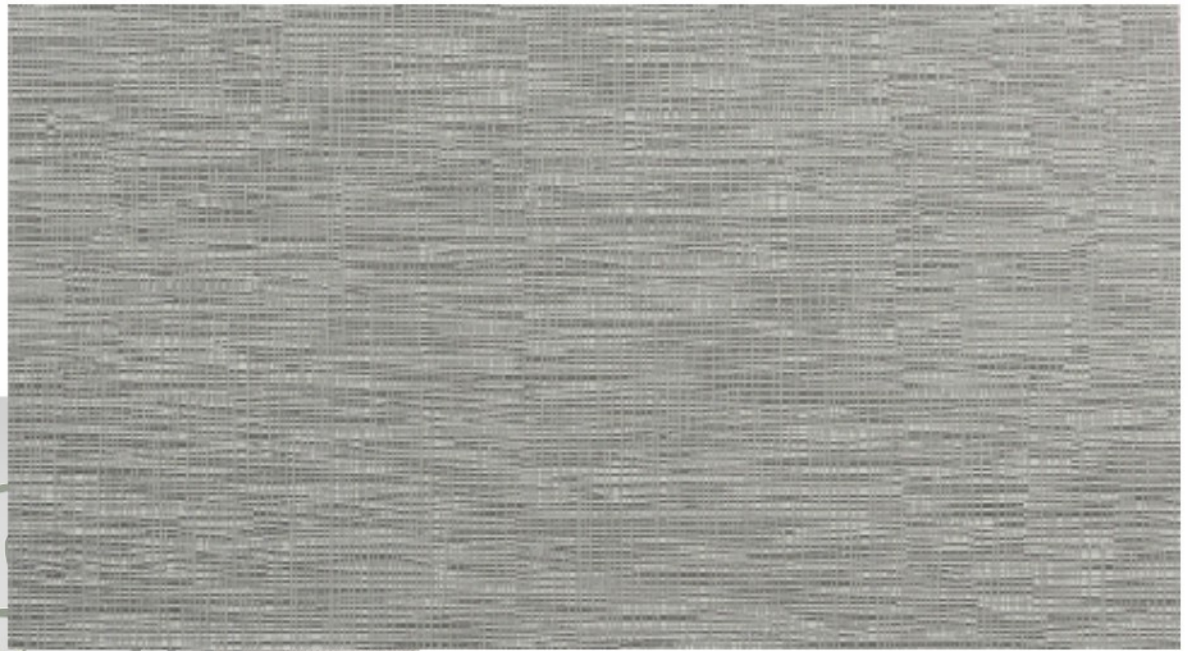


M 克里斯橡木 **N** F91006-2

Life is a journey to experience to learn and to enjoy.

因设计/印刷等因素存在一定色差，一切以实物为准！

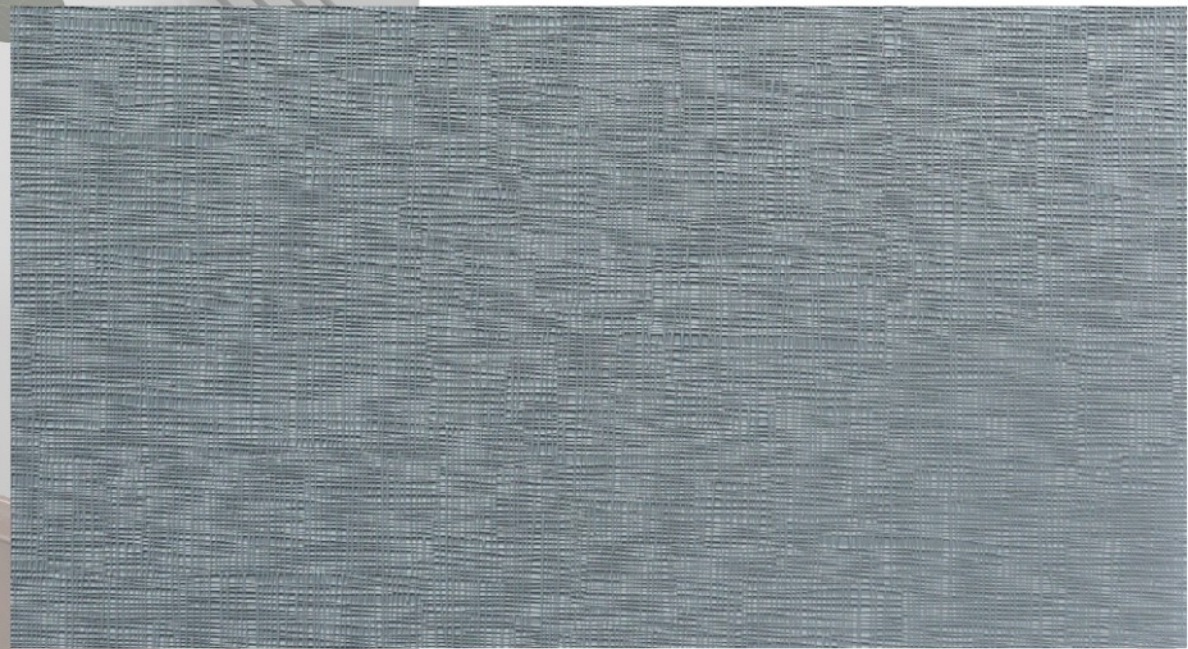




M 轻纱布纹

N F9006-8

Life is a journey to experience to learn and to enjoy.



M 轻纱布纹

N F9006-9

Life is a journey to experience to learn and to enjoy.



因设计/印刷等因素存在一定色差，一切以实物为准！



M 经典鱼肚

N F91003-1

Life is a journey to experience to learn and to enjoy.



M 大理石纹 **N** F9003H-1

Life is a journey to experience to learn and to enjoy.



M 大理石纹 **N** F9003H-2

Life is a journey to experience to learn and to enjoy.



M 大理石纹 **N** F9003H-4

Life is a journey to experience to learn and to enjoy.



M 大理石纹 **N** F9003H-6

Life is a journey to experience to learn and to enjoy.



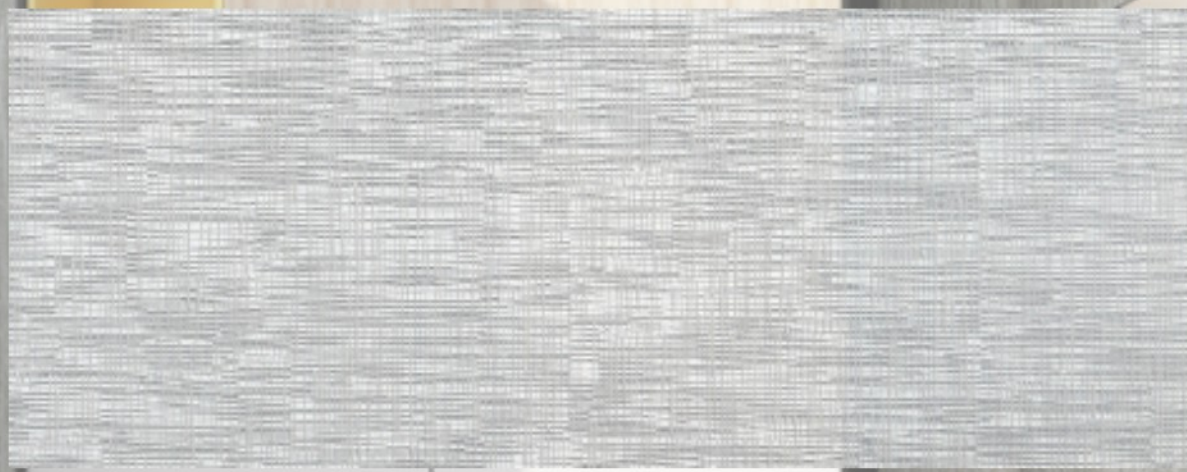
M 轻纱布纹 **N** F9006-1

Life is a journey to experience to learn and to enjoy.



M 轻纱布纹 **N** F9006-2

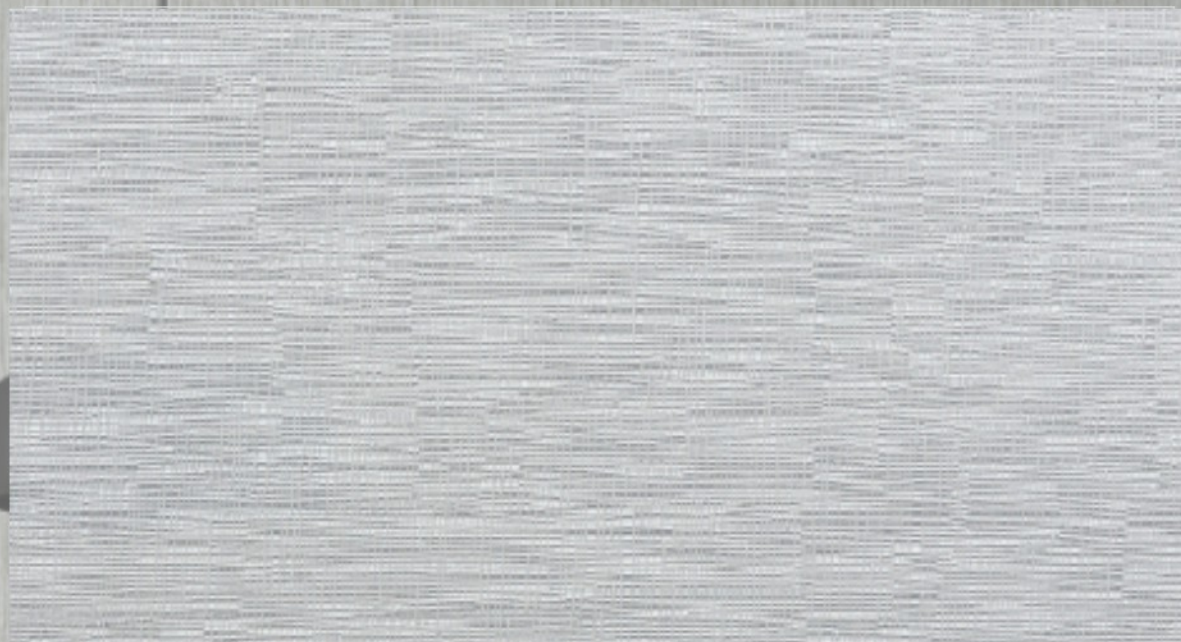
Life is a journey to experience to learn and to enjoy.



M 轻纱布纹 **N** F9006-3

Life is a journey to experience to learn and to enjoy.

HARDCOVER | WHOLE HOUSE DECORATION



M 轻纱布纹

N F9006-4

Life is a journey to experience to learn and to enjoy.



M 轻纱布纹

N F9006-5

Life is a journey to experience to learn and to enjoy.



M 轻纱布纹

N F9006-6

Life is a journey to experience to learn and to enjoy.



M 轻纱布纹

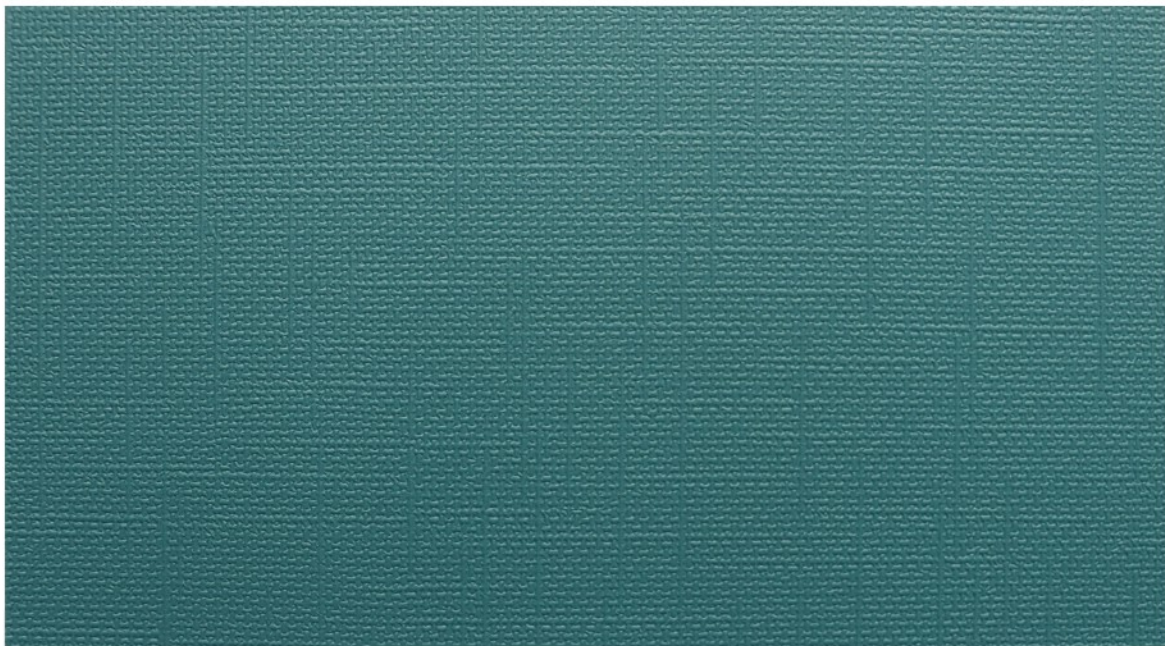
N F9006-7

Life is a journey to experience to learn and to enjoy.



N F92008-3

Life is a journey to experience to learn and to enjoy.

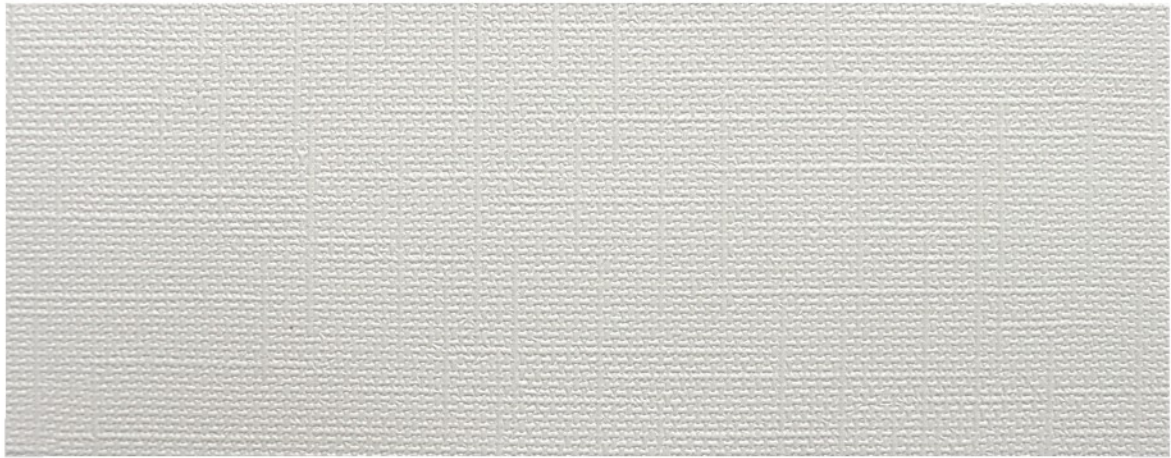


N F92008-6

Life is a journey to experience to learn and to enjoy.



CLOTH ART SPACE



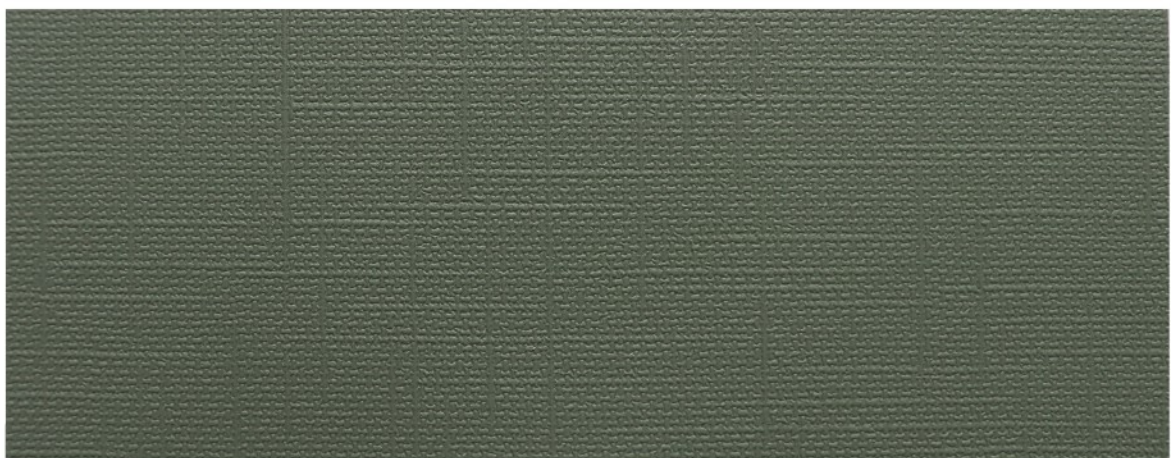
N F92008-1

Life is a journey to experience to learn and to enjoy.



N F92008-2

Life is a journey to experience to learn and to enjoy.



N F92008-5

Life is a journey to experience to learn and to enjoy.



N F92005-5

Life is a journey to experience to learn and to enjoy.



N F92005-2

Life is a journey to experience to learn and to enjoy.



N F92005-1

Life is a journey to experience to learn and to enjoy.



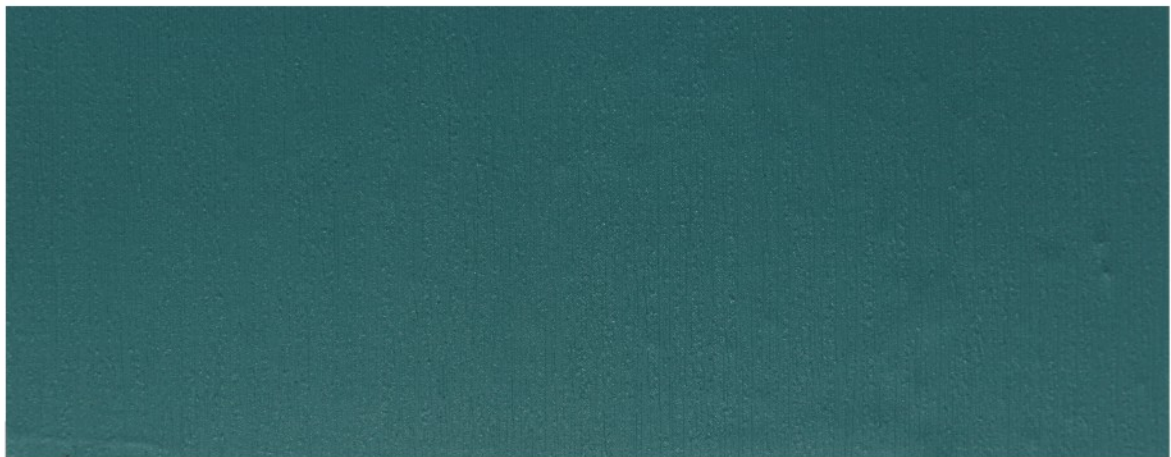
N F92005-3

Life is a journey to experience to learn and to enjoy.



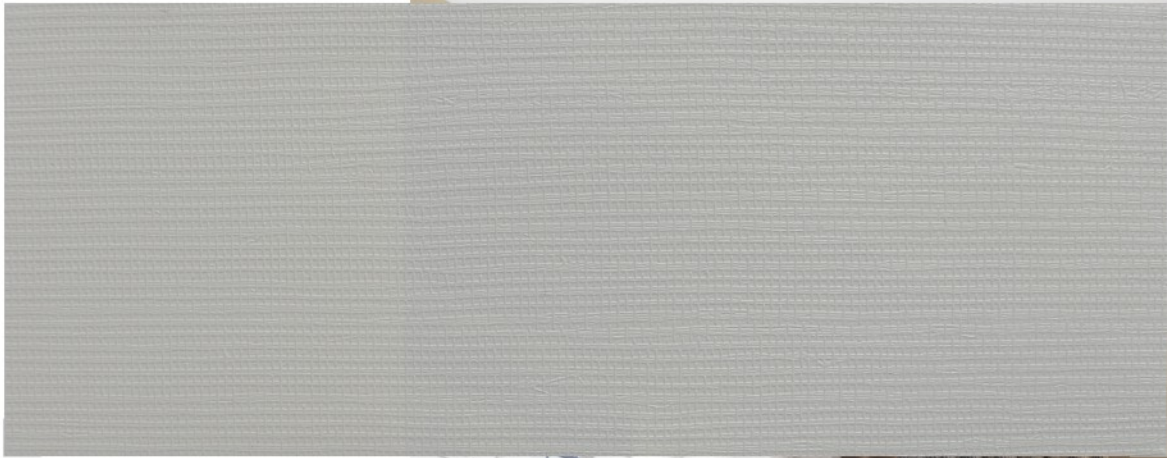
N F92005-6

Life is a journey to experience to learn and to enjoy.



N F92005-7

Life is a journey to experience to learn and to enjoy.



N F93001-1

Life is a journey to experience to learn and to enjoy.



N F93001-2

Life is a journey to experience to learn and to enjoy.



N F93001-3

Life is a journey to experience to learn and to enjoy.



THE TIME IS STILL





M 麻布纹

N F9002-1

Life is a journey to experience to learn and to enjoy.

Don't listen to what
other say about you,
lead you own life.



A photograph of a modern living room interior. A light gray leather sofa is the central focus, with two matching pillows. The background wall is white with a vertical line pattern on the right side. The ceiling features recessed lighting and a long, glowing horizontal light fixture. A small table with a white top and gold legs is visible on the left.

PURE FASHION

因设计/印刷等因素存在一定色差，一切以实物为准！



M 麻布纹

N F9002-4

Life is a journey to experience to learn and to enjoy.



M 麻布纹

N F9002-5

Life is a journey to experience to learn and to enjoy.



M 麻布纹

N F9002-6

Life is a journey to experience to learn and to enjoy.



FCP139A-26-011



FP8003ASD-011



FP8011ASD-011



FP8015ASD-011



FP9006A-008



FP9015A-008



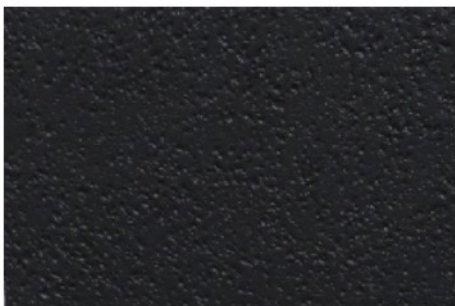
FP9001A-008



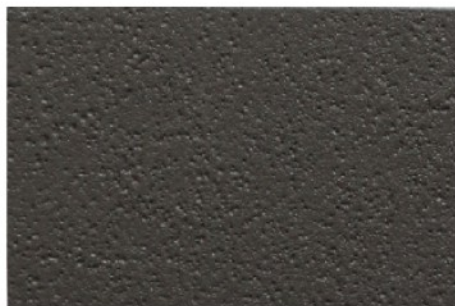
FP9008A-008



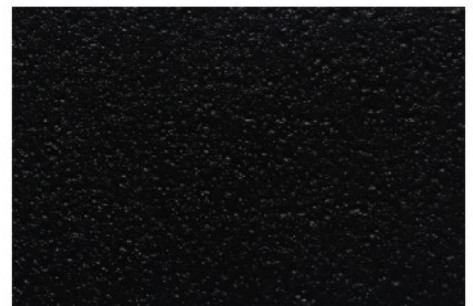
FP9006A-010



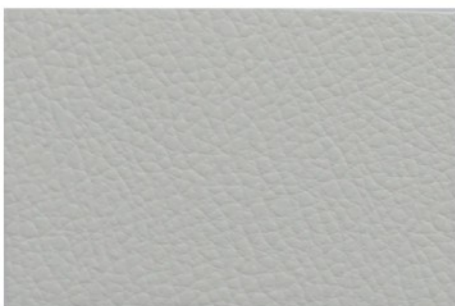
FP9015A-010



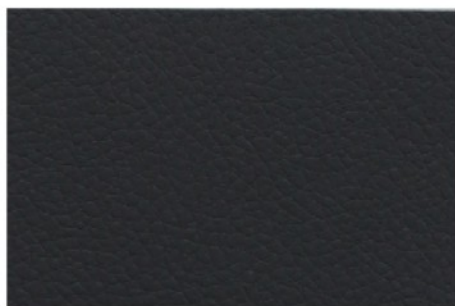
FP9001A-010



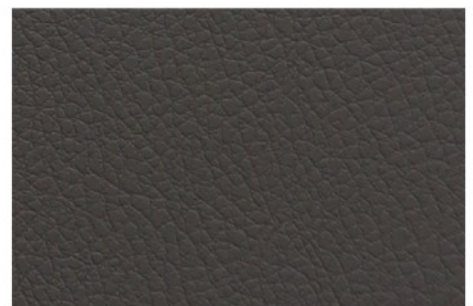
FP9008A-010



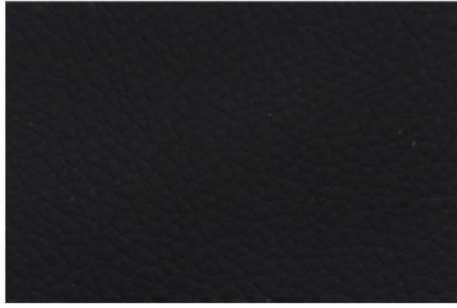
FP9006F-006



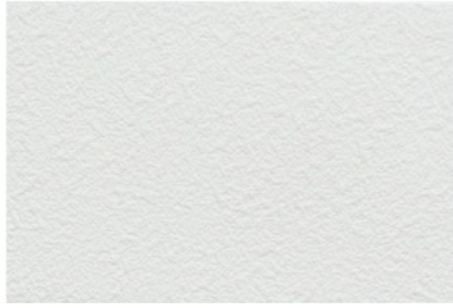
FP9015F-006



FP9001F-006



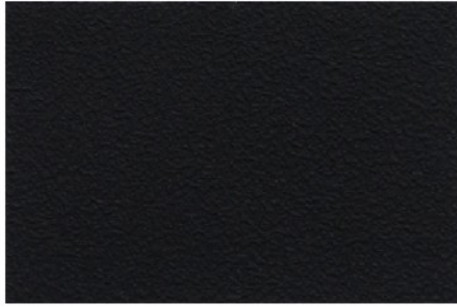
FP9008F-006



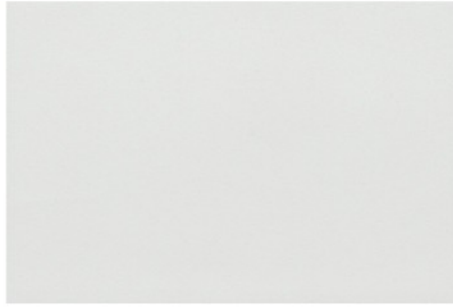
FP9006F-007



FP9015F-007



FP9008F-007



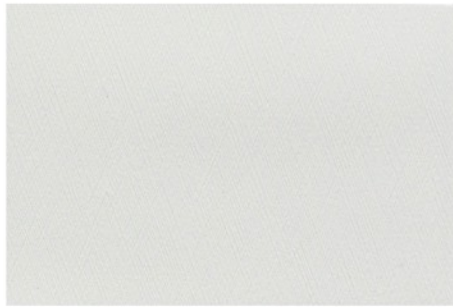
FP9006F-011



FP9001F-011



FP9008F-011



FP9006F-012



FP9015F-012



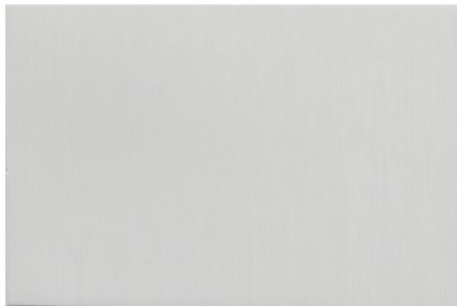
FP9008F-012



FP9015F-014



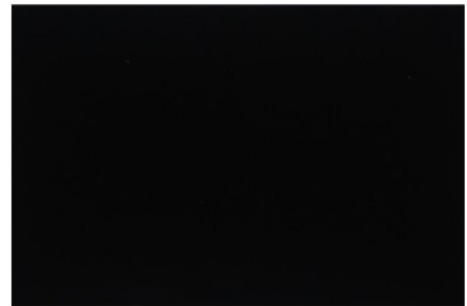
FP9001F-014



FP9006A-018



FP9015A-018



FP9008A-018