

GLOBAL SOURCING

CGCH

Guangdong Zhonghuilvjian Moving House Technology Co., LTD



 www.cgreenshouse.com

 +86 13725473058

 savannah@cgchcontainer.com

**Create a safe,
happy and beautiful
mobile living space
for all mankind!**



1 ABOUT US

Our strength

CORPORATE CULTURE

Our honor

ONE-STOP SERVICE

ONE-STOP SERVICE

Customer recognition

CONTAINER HOUSE

2

Detachable Container

Project presentation

Flat Pack Container

The case set

CONTENTS



HESHAN
INDUSTRIAL
ZONE,
GUANGDONG, CHINA

QUALITY ASSURANCE

TRUSTWORTHY



ABOUT US



Guangdong Zhonghuilvjian Moving House Technology Co., LTD. the leader of China's light steel building industry. always takes popularizing green energy-saving light steel structure buildings at the first place and is devoted to the development, popularization, research and application of light steel structure energy-saving buildings.

With a hard-working team and a harmonious working atmosphere, our products are more and more perfect and diversified, not only beautiful in appearance, but also practical in many areas. We've got a one-stop supply from design

production, construction to marketing. Moneybox provides many practical products, such as prefabricated houses, light steel villas, compartment type houses, sentry box, additional layers, partition walls, large-scale plants and warehouses, accommodations, etc.

Our company is committed to provide first-class quality and efficient pre-sale and after-sale services, which has taken good reputations from our customers around the world such as Angola, Ethiopia, Nigeria, South Africa, Somalia, Morocco, Russia, Kyrgyzstan, United Arab Emirates, Saudi Arabia, Iran, Maldives, Vietnam, Malaysia and Peru, etc.

It has cultivated a group of high-quality professional technicians and on-site installation team.

providing all-dimensional services for customers with enterprising and pragmatic attitude. From project conception, design, manufacture, construction to installation, we will do the best of our ability to provide the most scientific, reasonable and effective solutions for customers.

For green prefabricated house, just choose CGCH which is a professional Alibaba gold supplier, and you can absolutely save time and save money in your money box. CGCH Prefabricated House-- Your First and Most ideal Choice.

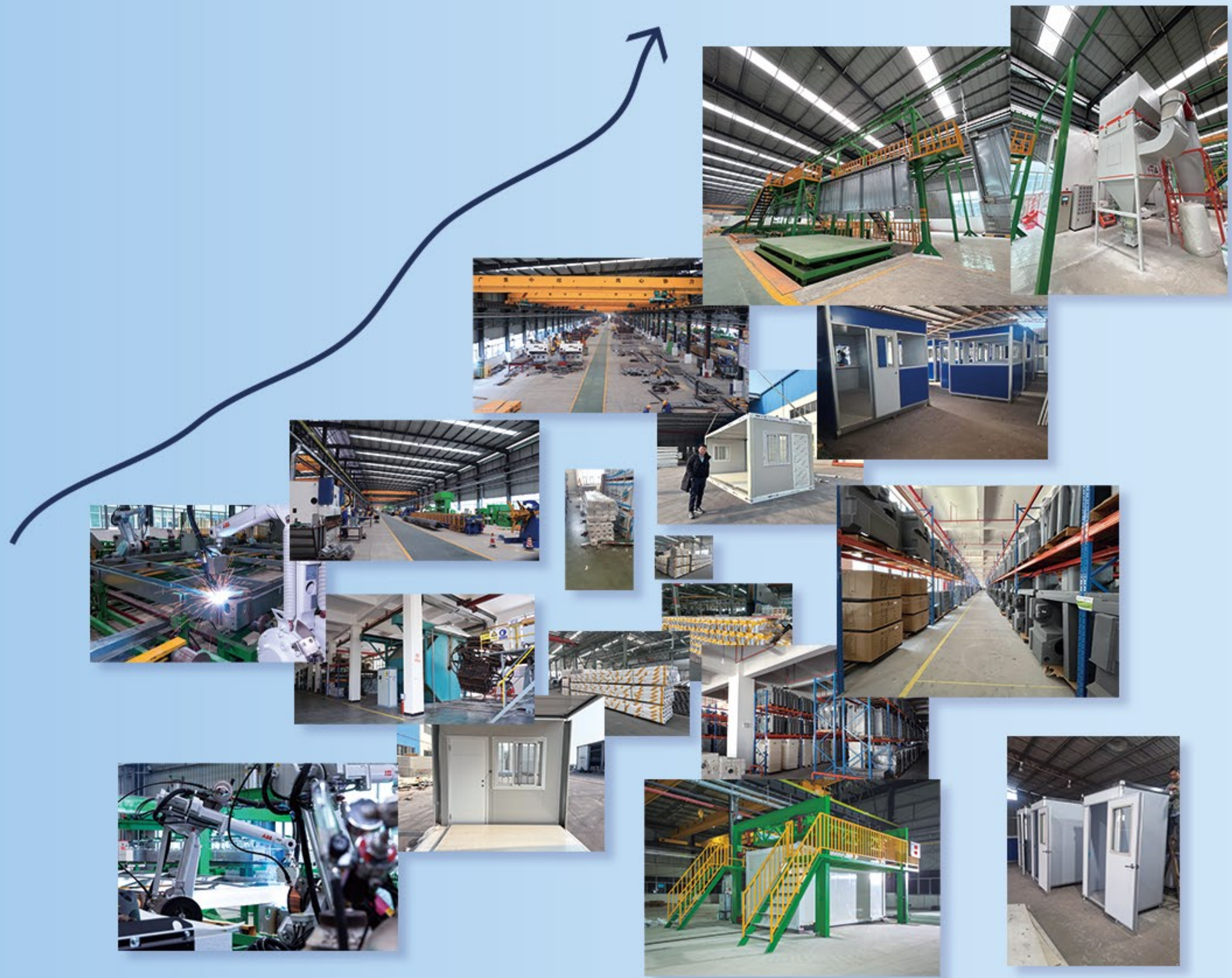
4 Main Supply Chain

18 Factorios in Chain

Such As Sanya, Changsha, Wuhan, Nanchang, Shanghai, Chengdu And Chongqing



18 Factorios in Chain



CORPORATE CULTURE

CGCH Core Values:

Quality, integrity, innovation, win-win.

CGCH Value Criteria:

Our vision is : We are committed to becoming the worlds leading mobile home provider, the most trusted partner for investors, and the most followed by employees in the industry.

Our corporate team view is : Sincerity, communication, cooperation and differentiation

Our corporate vision is : Resolutely spoiled the customer.

Our corporate product concept is : Never Compromise on quality

Our view of corporate talent is : Keep improving, guard against arrogance and rashness.



SERVICE
&
QUALITY

FUTURE



ONE-STOP SERVICE



CGCH can offer you one-stop service. We can design according to clients' requirements. We have strict quality control during production, and we can help clients to arrange shipping to their local port or door-to-door.



CONSTRUCTION DRAWING DESIGN

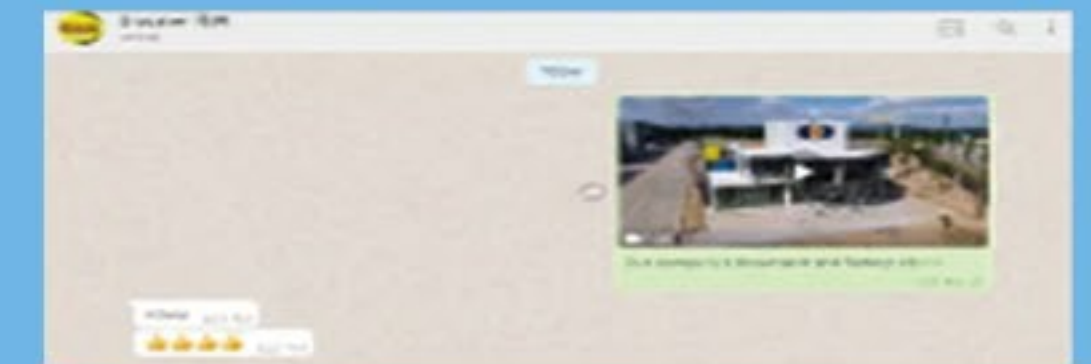
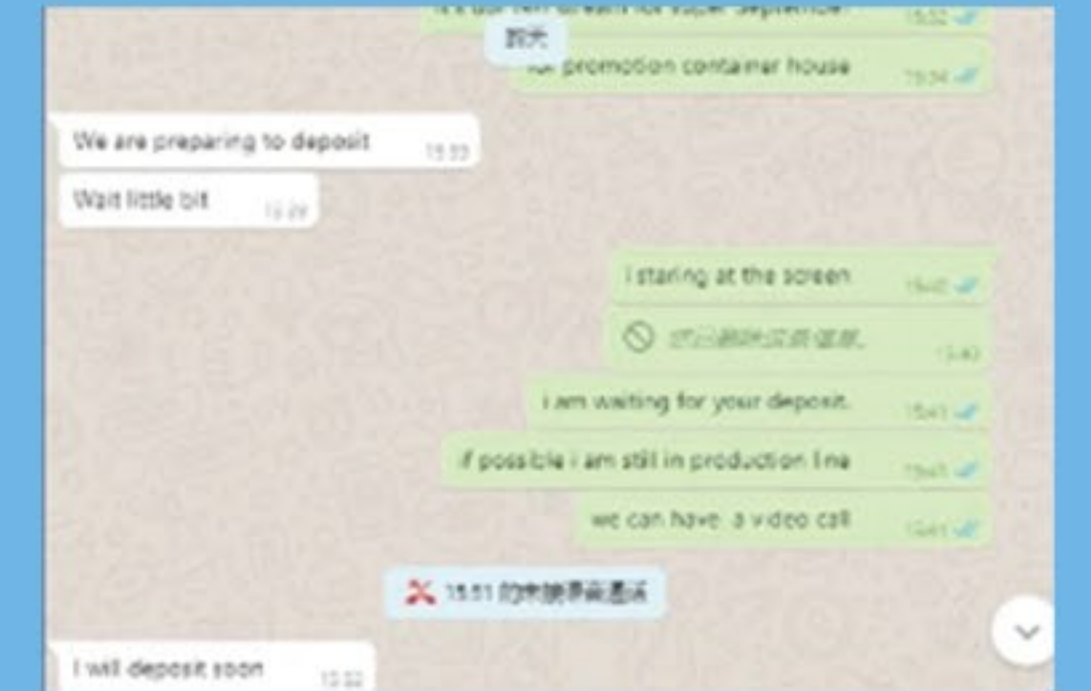
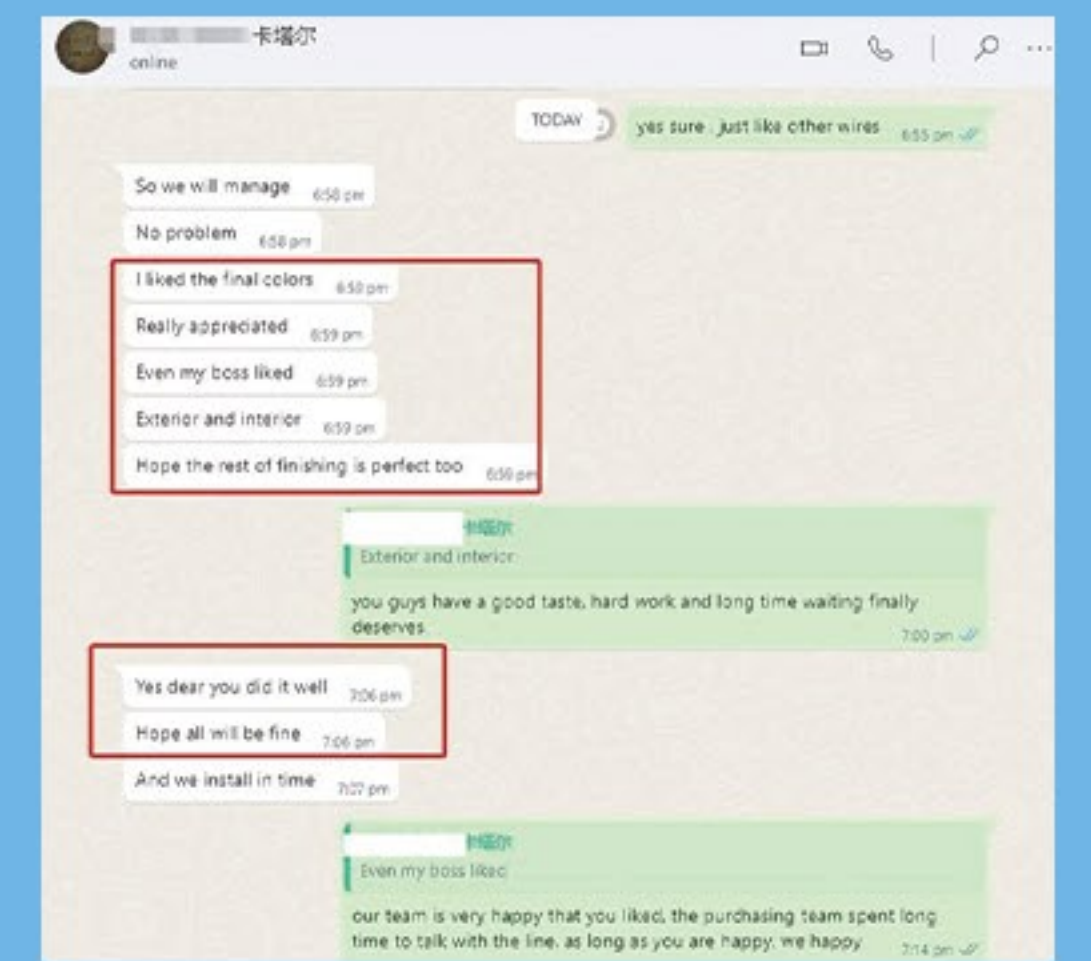
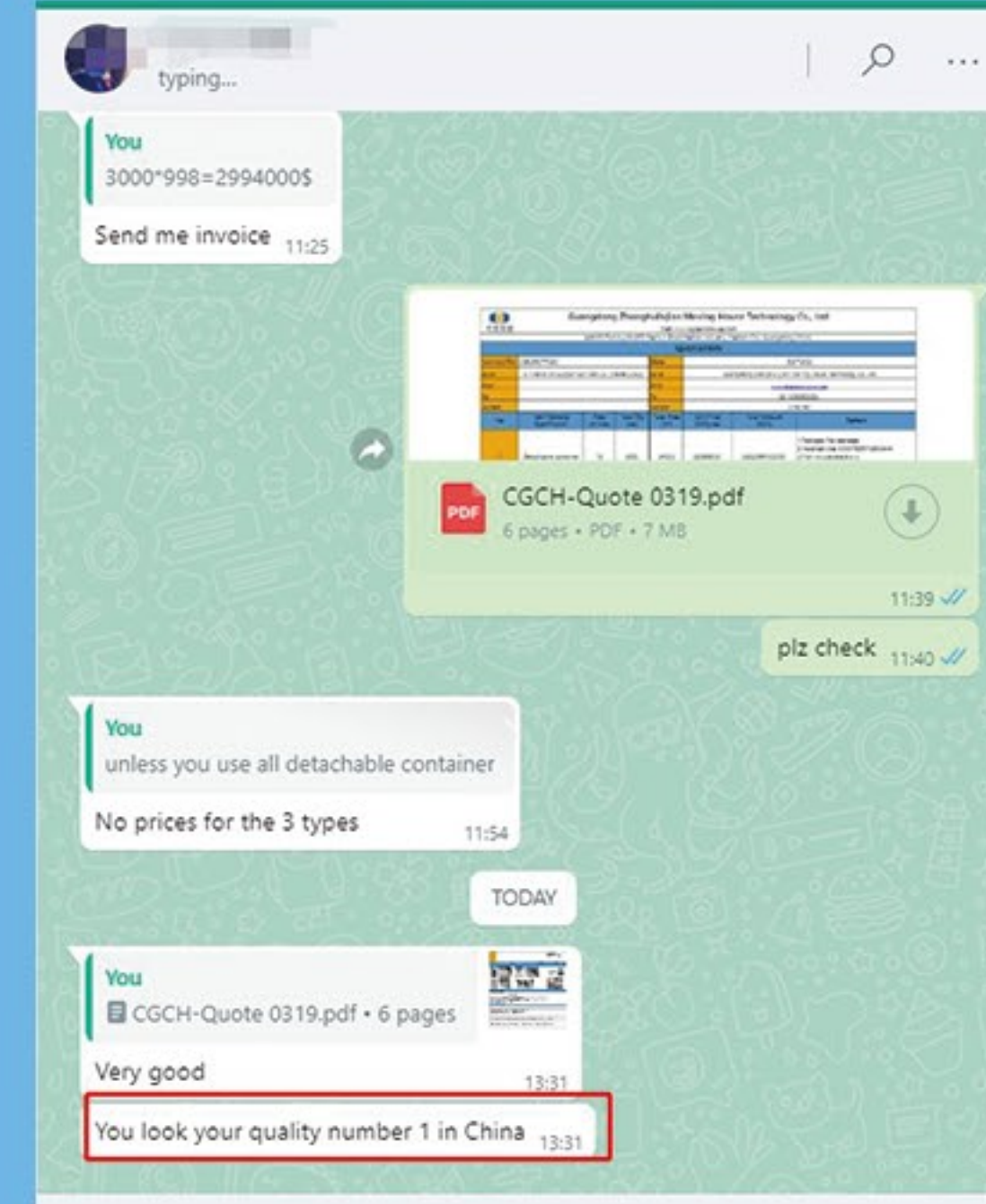
We can make the design according to clients' requirements. For the design, it includes floorplan, front and rear elevation, roof plan profile for steel structure etc. Our engineers can also analyze the steel structure according to clients' needs of bearing load and local wind speed, and then optimize the drawing to save the cost for clients.



3D DESIGN



CUSTOMER FEEDBACK



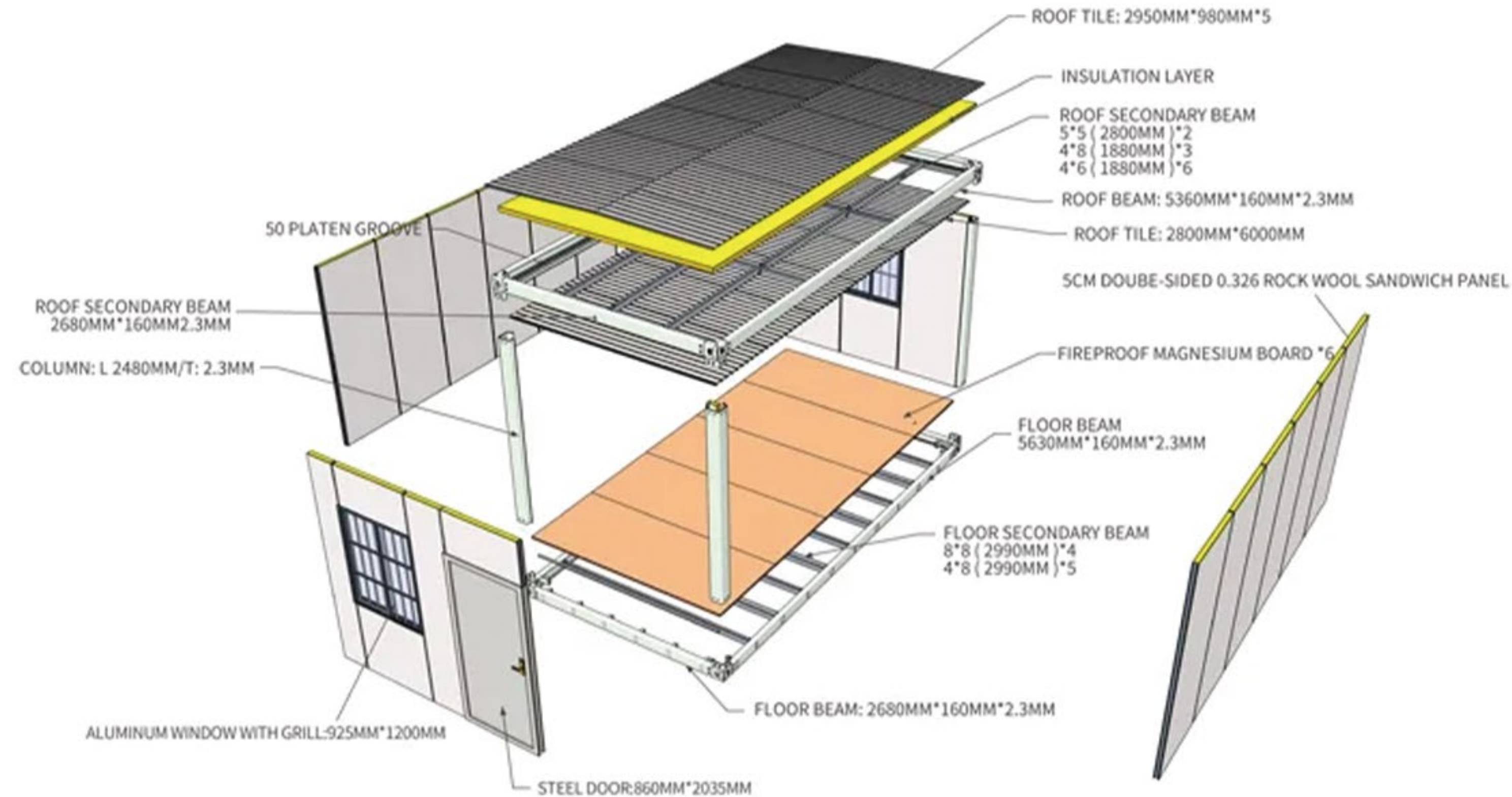
CONTAINER HOUSE HOME PAGE



Detachable Container



BIG SMART, EASY LOGISTIC AND HI



MORE DETAILS



800x1100mm
plastic steel window

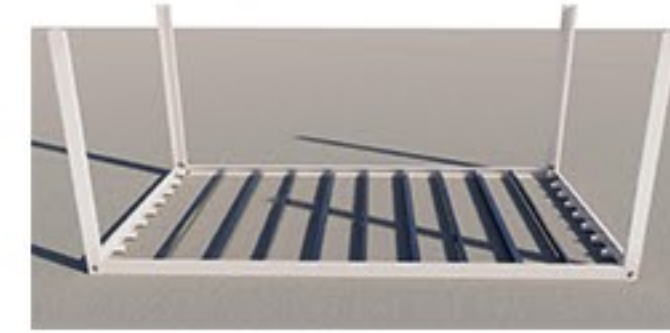


840x2040mm
steel door

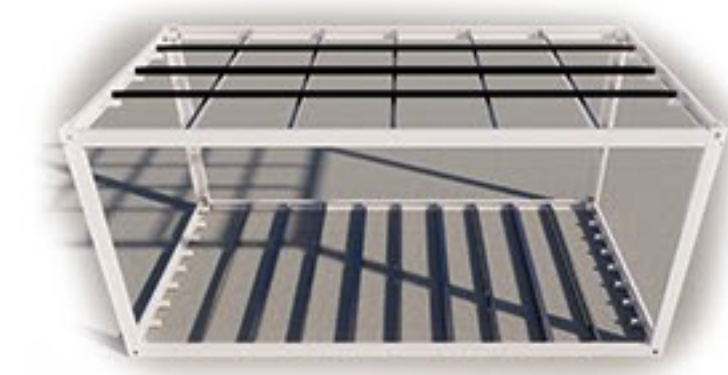


50mm EPS
sandwich panel

Installation steps



Step 1



Step 2



Step 3



Step 4



Industrial plugs



Distribution Box



Exhaust fan



Ceiling lights



PVC shutter



Eps Sandwich Panel

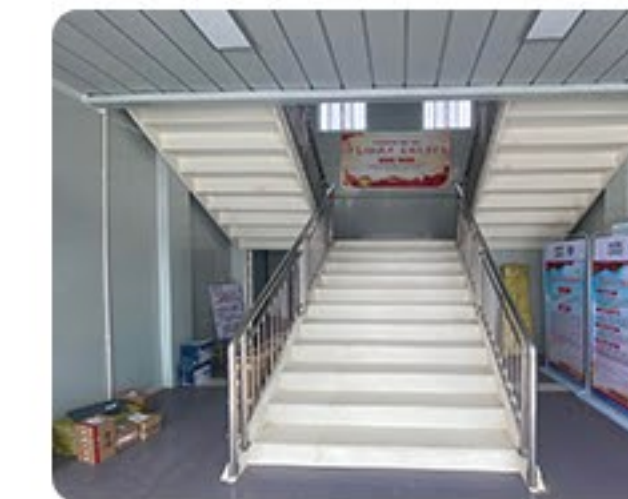
Actors Modular House

Which cost a total of 162 containers and 45 days, the 1st floor is the office building, the 2nd floor is the dormitory, The main functional areas included offices, confuencerooms kitchens restaurants, dormitories and toilets to meet the needs.



Project Department

China Gezhouba Dam Construction & Engineering has 1,000 containers. It is divided into three stages. This photo is the first phase of the project. It completed and delivered 350 containers and 60 days, including the interior decoration.





The case set

The case set

Warehouse

The China Railway Seventh Bureau ShenShan Warehouse Zone. The office building consists of 58 containers, 18 aisle containers and a glass curtain wall. The main uses include office, catering, management accommodation, health areas and conference rooms. It took a total of 30 days from the design and production installation. The staff bedrooms are built by prefab house.



Office Building

The production line consists of 355 containers, a total of 2 floors, the roof of the use of fire rock wool sandwich panels. The main uses are electronic production lines, offices, canteens and staff recreation rooms. Four production lines are produced at the same time and 24 workers are installed at the same time. Even the interior took 50 days to complete, while the container's skeleton took about 10 days

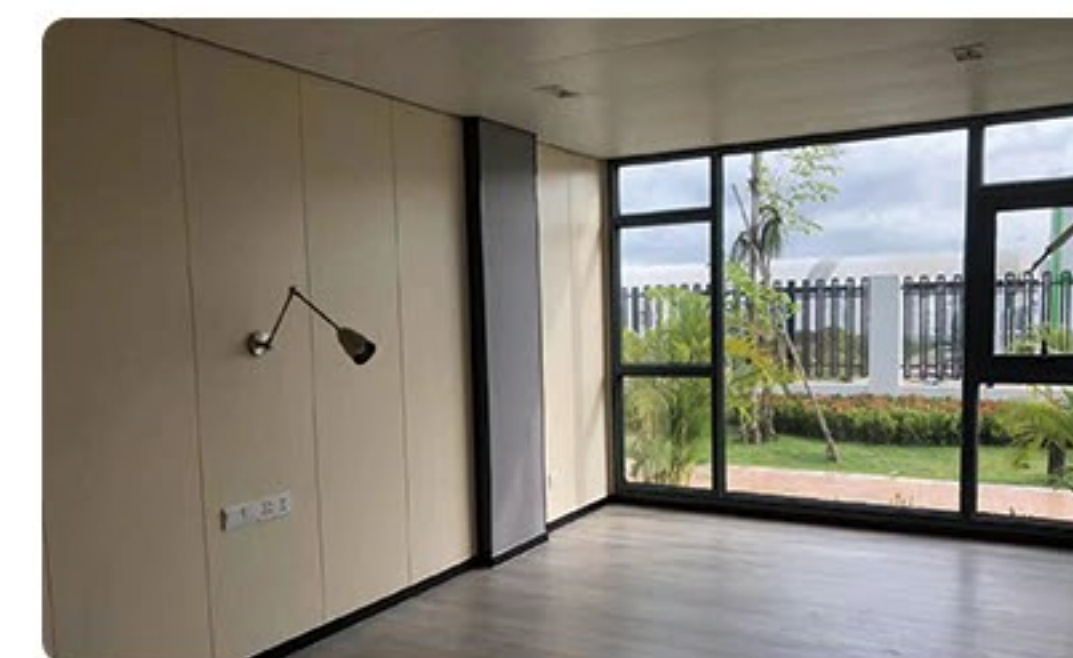
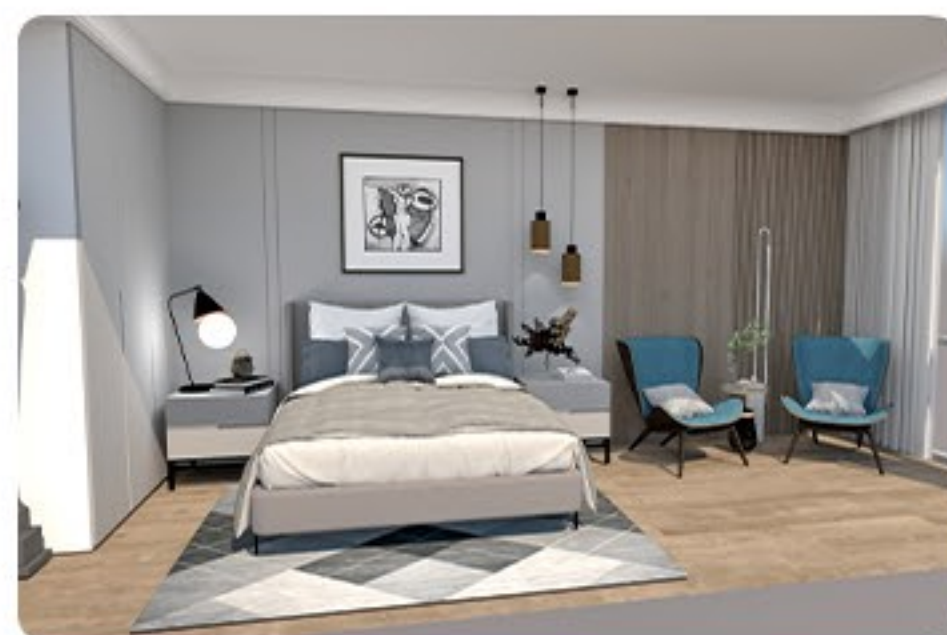


China State Construction Engineering Bureau No. 4



Commercial Street

Residential
accommodation



Hotel

Coffee shop



Project

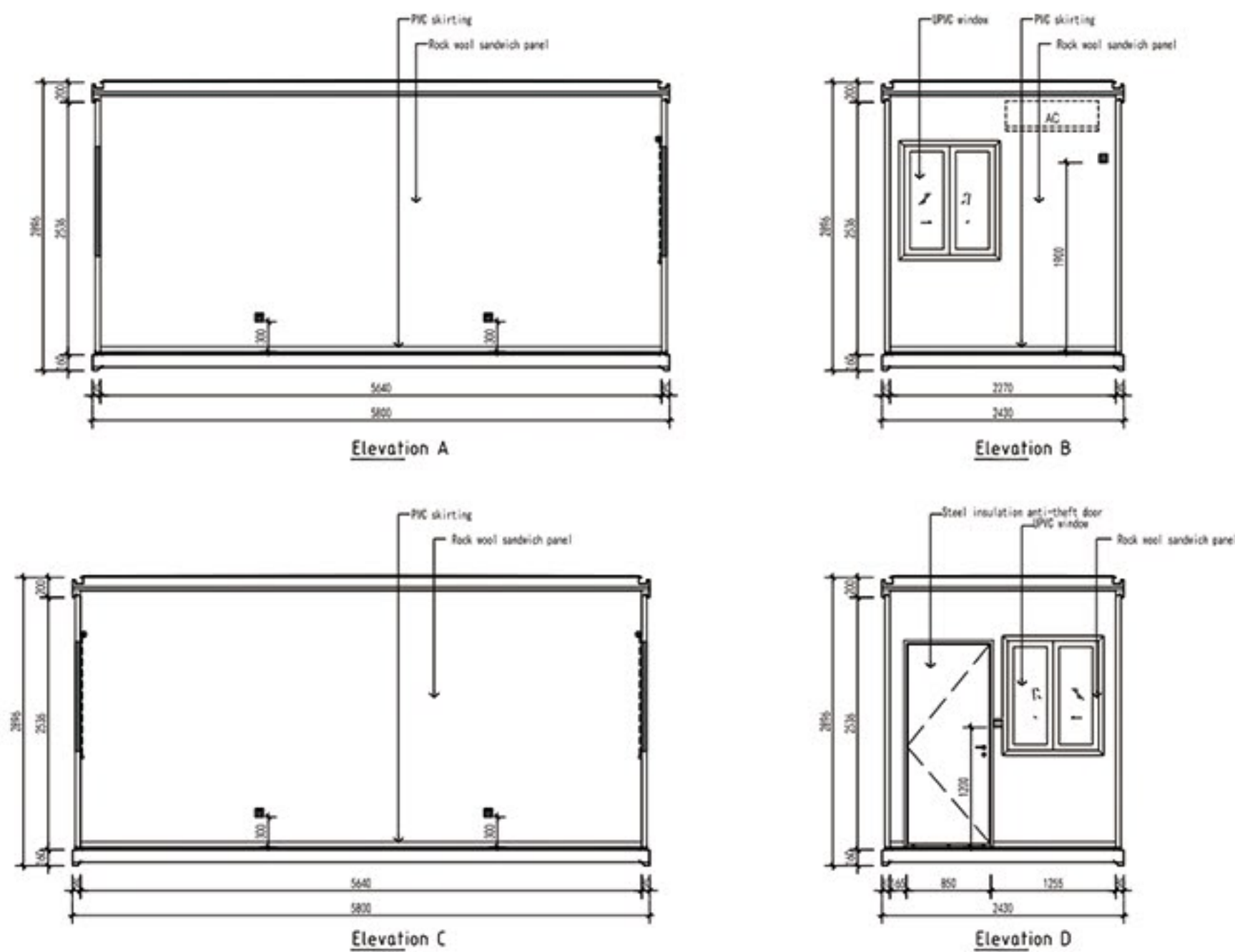
Brazil,
laundry room

Flat Pack Container

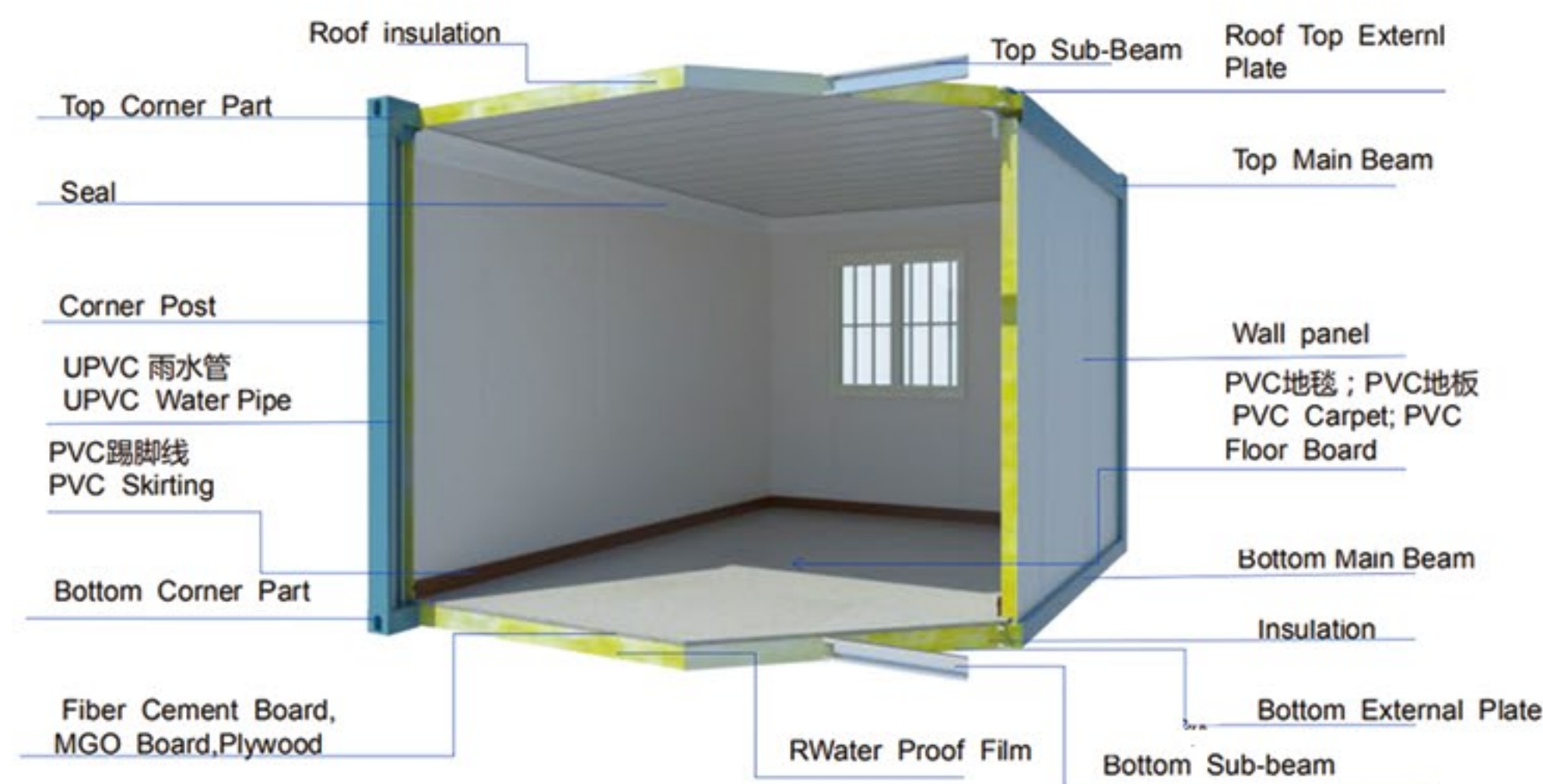


Portable Detachable Container is a new generation of prefab house. It is a whole unit itself, which can be used as a single portable house, or combined laterally or stacked into two or three floors. Detachable Container house can be connected by bolts, with easy installation and fast transportation. Life span is about 15 years.

More details



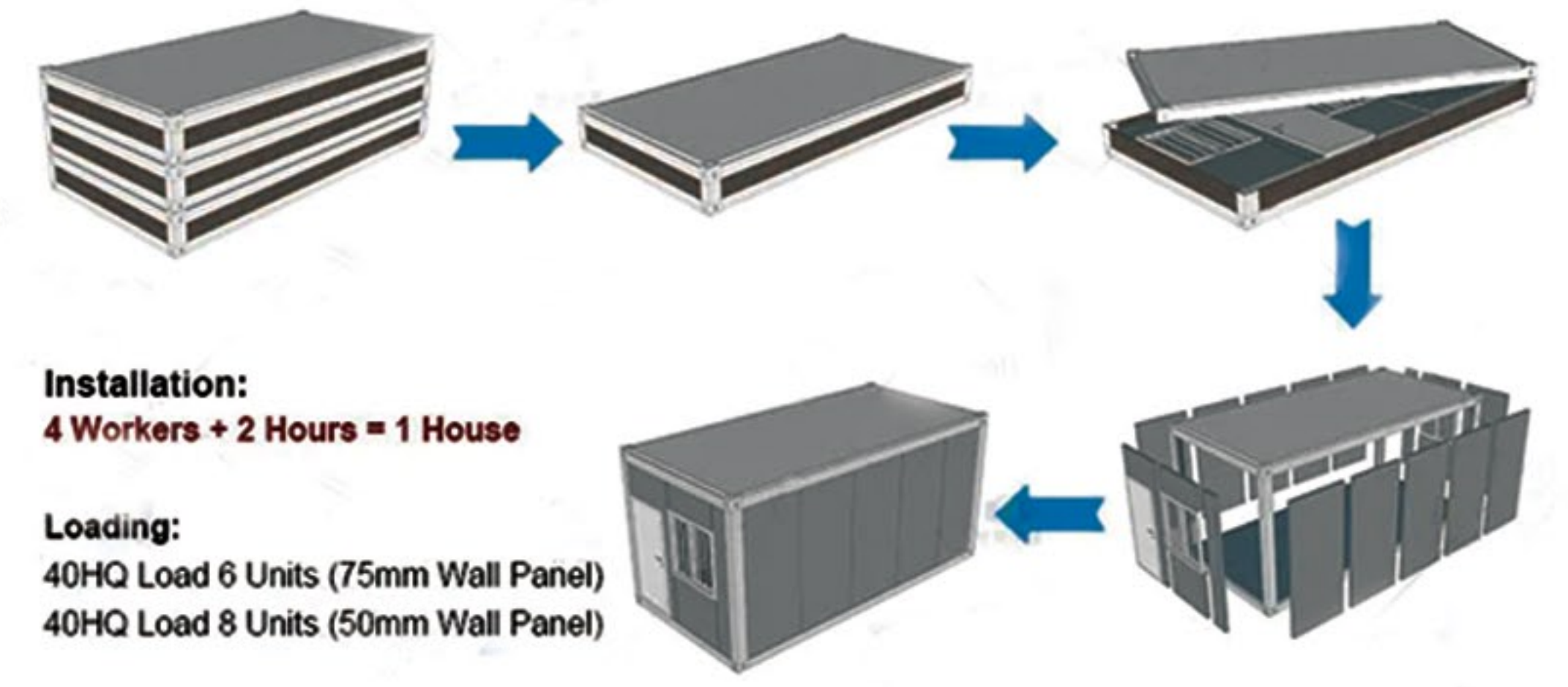
Section



More details



Step



Types of electical optional



Doors and Windows



Frame structure of materials

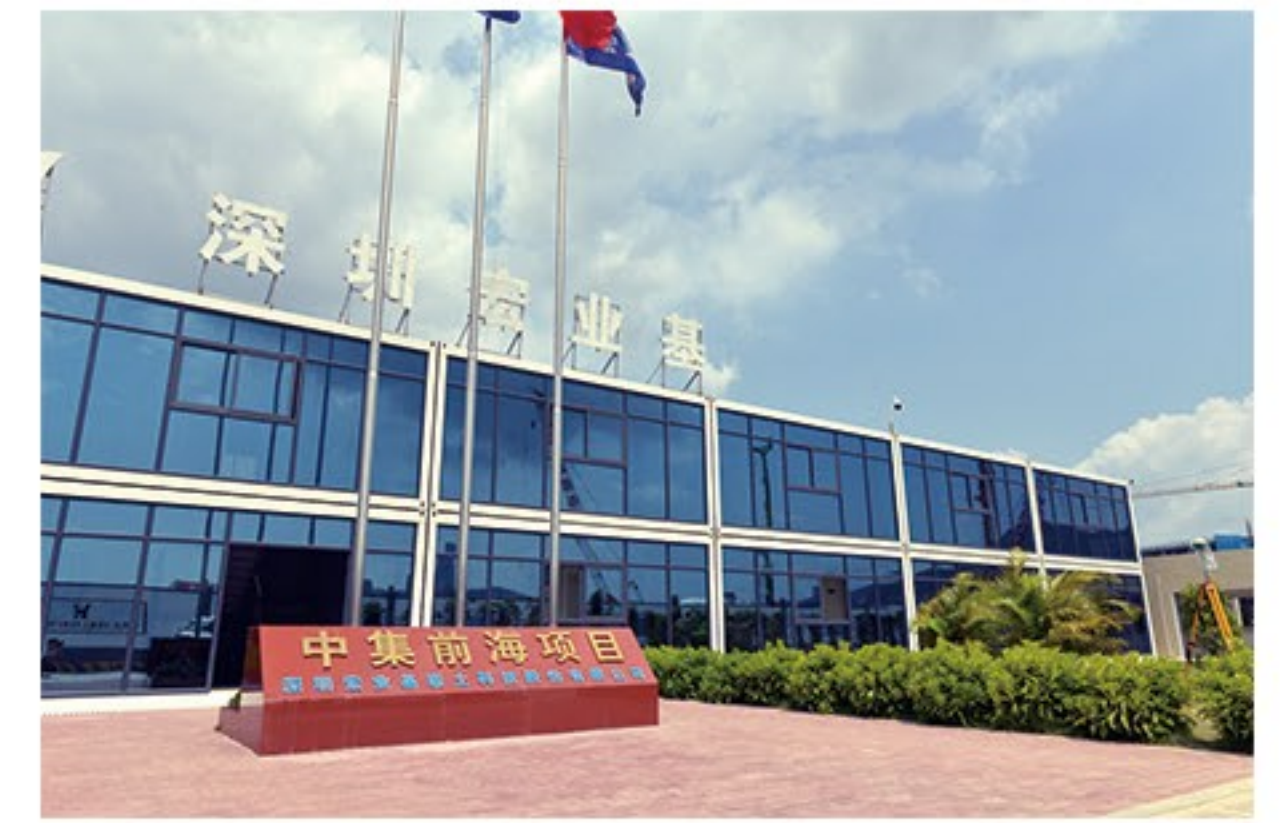


A-22

The case set

The case set

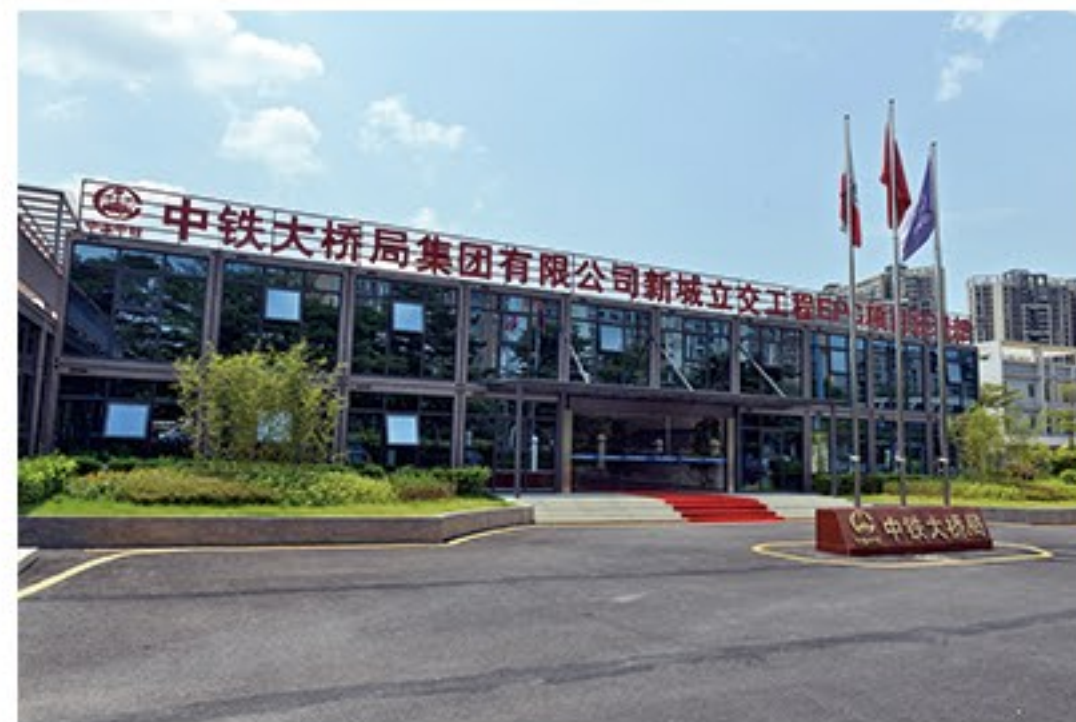
FIFA 2022 World Cup project in Qatar



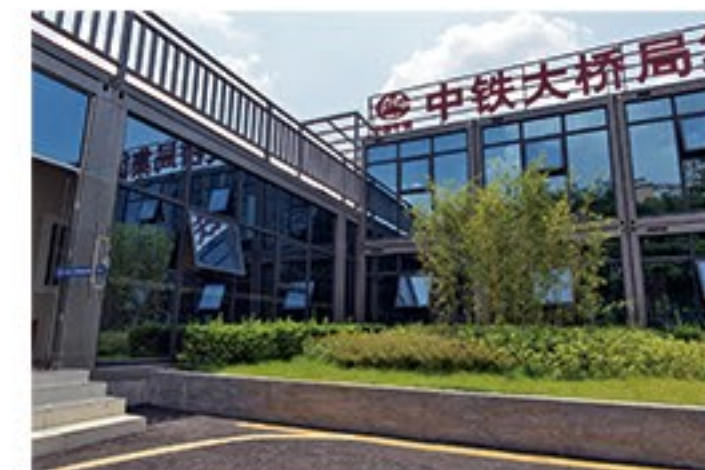
Shenzhen Hongye Base Project



China Construction Group Project



China Railway Bridge Administration project





Restaurant



Commercial Street



Hotel



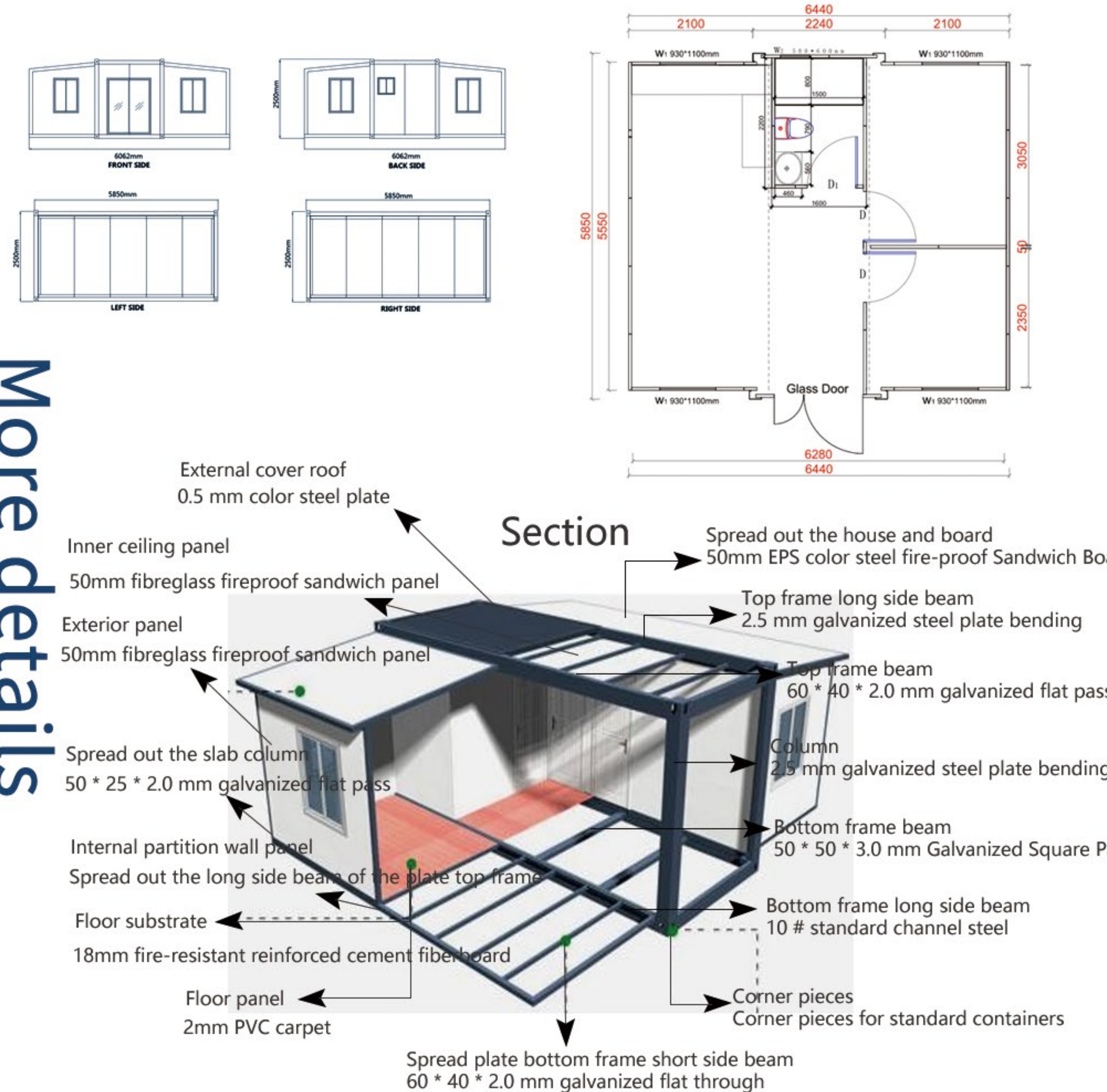
Coffee shop

Expandable Container



Portable detachable containers are a new generation of prefabricated houses that are themselves a whole and can be used as a single portable house that can be assembled horizontally. The utility model adopts the bolt connection, has convenient installation and fast transportation. Life expectancy is about 15 years.

More details



More details



840x2040mm
steel door



800x1100mm
plastic steel window



50mm EPS
sandwich panel
Modular housing



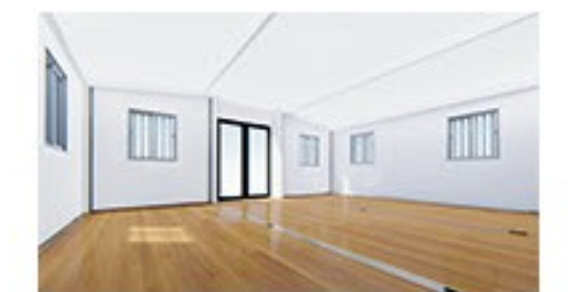


The case set

The case set



At home



Hotel



A small hotel



Office

More details



800x1100mm
plastic steel window



Modular housing



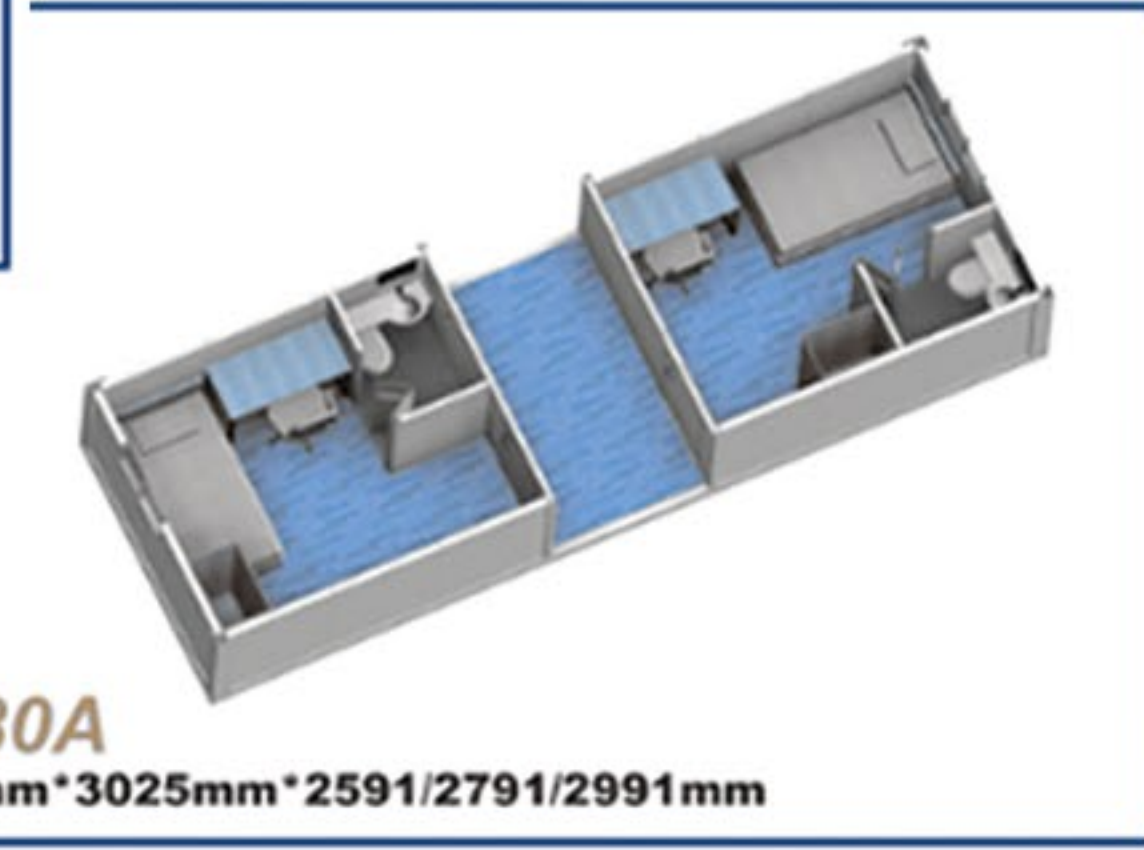
10*20A
6058mm*3025mm*2591/2791/2991mm



10*23A
7038mm*3025mm*2591/2791/2991mm



10*26A
8020mm*3025mm*2591/2791/2991mm



10*30A
9000mm*3025mm*2591/2791/2991mm

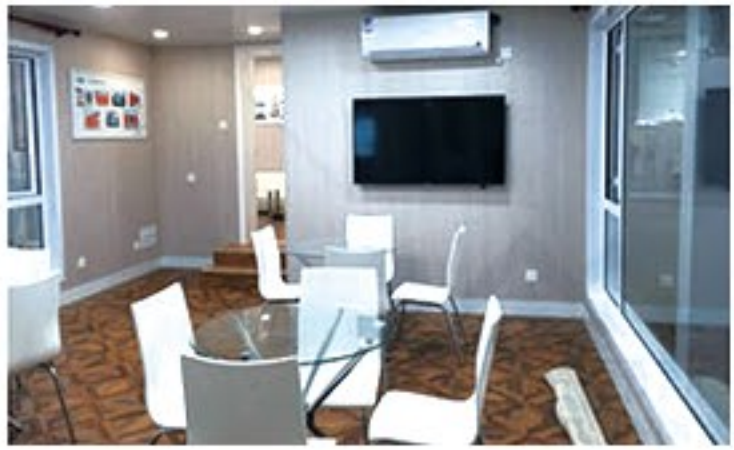
Modular housing



The case set

The case set

Commercial Street



Campsite



The gym