

90W T MAX-O

T MAX-O is composed of monocrystalline silicon cells, and contains 2\*12 modules inside, with a power level of 90w. Frameless design, easy to clean and no snow accumulation

High-efficiency crystalline silicon, 180w per square meter, double-layer 3.2mm tempered glass design, can withstand trampling during installation, and resist rain and snow,

The design combines traditional tiles and modern solar cell technology, which can provide clean energy for your home as a roofing building material.



T MAX O PHYSICAL PARAMETERS	
Product model	JS87DG-12e 1/
Dimensions	1340*420mm
Weight	15.5kg
Glass (material/thickness)	Tempered glass/3.2mm+3.2mm
Cell	182*91mm (2*12)
Junction box	≥IP67
Cable type	900mm / 4mm <sup>2</sup>
Plug connector	MC4
Life span	>30years
ELECTRICAL PARAMETERS (STC)	
Solar cells	Monocrystalline
Power output (Pmax )	90W
Module efficiency (%)	18.90%
Voltage at Pmax (V mpp)	13.7V
Current at Pmax (I mpp)	6.57A
Open-circuit current (Voc)	16.3V
Short-circuit current (Isc)	6.89A

Build in one

Ventilation and heat dissipation are easy to repair

Structural drainage

The surface flows and is easy to clean

Integral compounding

Glass has a long life without punching

New materials

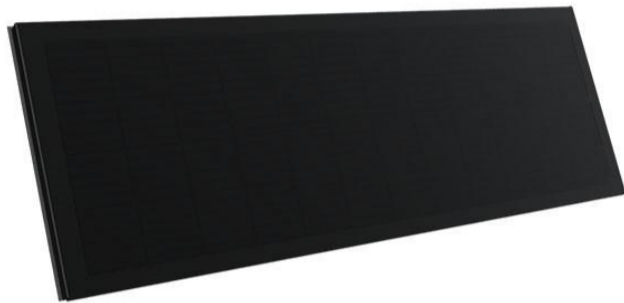
Sound insulation and heat preservation, fire resistance and aging resistance, low linear expansion coefficient

The warranty claim is for the product for 10 years and the power warranty for 25 years.

90W T MAX-A

T MAX-A is composed of monocrystalline silicon cells, containing 2\*12 modules and a power level of 90W. High-efficiency integrated roof design, more installation capacity, more power generation

Solar roof tile as a new building material to provide you with green energy one-stop solution, home roof tile and solar energy integrated design



T MAX A PHYSICAL PARAMETERS	
Product model	JS90DG-12e 1/2
Dimensions	1200*430mm
Weight	9.5kg
Glass (material/thickness)	Tempered glass/3.2mm+3.2mm
Cell	182*91mm (2*12)
Junction box	≥IP67
Cable type	500mm / 4mm <sup>2</sup>
Plug connector	MC4
Life span	>30years
ELECTRICAL PARAMETERS (STC)	
Solar cells	Monocrystalline
Power output (Pmax )	90W
Module efficiency (%)	17.40%
Voltage at Pmax (V mpp)	13.7V
Current at Pmax (I mpp)	6.57A
Open-circuit current (Voc)	16.3V
Short-circuit current (Isc)	6.89A

Modular Installation

Heat insulation

High efficiency

Eye protection and anti-glare

Fully absorb visible light

Top-end material

Strong resistance to pressure and wear

Sealing design waterproof

Leak-proof, and anti-circuit

The warranty claim is for the product for 10 years and the power warranty for 25 years.

Zhejiang San-gobuild Jiasheng New Energy Co., Ltd

E-mail: info@sgbsolar.com      Hotline: +86-4000 788 771

Address: No. 512, Chongxian Road, Gaole Industrial Park, Gaohong Town, Lin'an District, Hangzhou, Zhejiang Province, China

Web address: www.sgbsolar.com