

# T-Max Tile\_R Series

- Solar Roof Tile as the New Type of Building Materials Provide Green Energy for You
- One-Stop Solution Home Usings, Roof Tile and Solar Energy Intergrate Design



## Innovative

Cloud shape | High compression resistance | Same life span as the building



## Widely Used

Cloud shape | High compression resistance | Same life span as the building



## Waterproof Structure

Triple waterproof structure | GB/T 36584-2018 5.1



## Fashion & Beauty

Integrated design | Beautiful

# T-Max Tile\_R Series

## PRODUCT PICTURE

Product model	JS55DG-8e 1/2
Dimensions	700*700mm
Weight	10.5kg
Glass (material/thickness)	Tempered glass/3.2mm+3.2mm
Cell	182*91mm
Junction box	≥IP67
Cable type	500mm / 4mm <sup>2</sup>
Plug connector	MC4
Life span	>30years

## ELECTRICAL PARAMETERS(STC)

Solar cells	Monocrystalline
Power output (P <sub>max</sub> )	55W
Module efficiency (%)	15.4%
Voltage at Pmax (V <sub>mpp</sub> )	8.90V
Current at Pmax (I <sub>mpp</sub> )	6.18A
Open-circuit current (V <sub>oc</sub> )	10.59V
Short-circuit current (I <sub>sc</sub> )	6.54A

STC: 1000W/m<sup>2</sup> irradiance, 25 degree cell temperature, AM1.5g.

## PERFORMANCE GRADE

Color	Black
Load grade	2400Pa
Fireproofing grade	ClassA
Anti-hail grade	Φ25mm/23m/s
Operating temperature	-40°C~+85°C
Operating humidity	0-80%

## OPERATING CONDITIONS

Max. system voltage	1500V <sub>DC</sub>
Max. series fuse rating	20A
Operating temperature range	-40°C~+85°C
Max. static load, front (e.g., snow)	5400Pa
Max. static load, back (e.g., wind)	2400Pa
Max. hailstone impact (diameter / velocity)	25mm / 23m/s

## THERMAL CHARACTERISTICS

Nominal operating cell temperature	NOCT	°C	45 ± 2
Temperature coefficient of P <sub>max</sub>	γ	%/°C	-0.36
Temperature coefficient of V <sub>oc</sub>	β <sub>Voc</sub>	%/°C	-0.30
Temperature coefficient of I <sub>sc</sub>	α <sub>Isc</sub>	%/°C	0.05

Due to continuous innovation, research and product improvement, the specifications in this product information sheet are subject to change without prior notice. The specifications may deviate slightly and are not guaranteed.

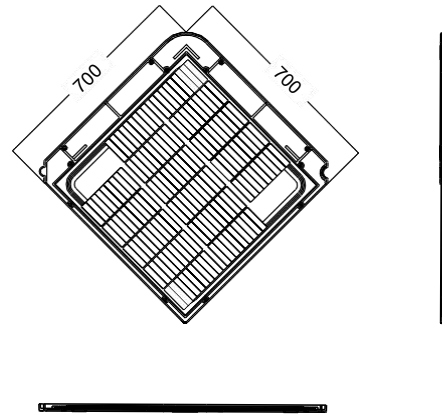
The data do not refer to a single module and they are not part of the offer, they only serve for comparison to different module types.

## QUALIFICATIONS AND CERTIFICATIONS

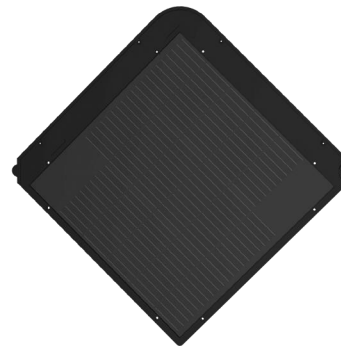
IEC 61215, IEC 61730, 3C, ISO 9001:2015, ISO 14001:2015, ISO 45001: 2018.

## DIMENSIONS

Unit : mm



## PRODUCT PICTURE



## INSTALL



Zhejiang San-gobuild Jiasheng New Energy Co., Ltd.

E-mail: [info@sgbsolar.com](mailto:info@sgbsolar.com)

Hotline: +86-4000 788 771

Address: No. 512, Chongxian Road, Gaole Industrial Park, Gaohong Town, Lin'an District, Hangzhou, Zhejiang Province, China

Web address: [www.sgbsolar.com](http://www.sgbsolar.com)

