

T-Max Tile_S Series

Flexible crystalline silicon solar cells, packaged in curved glass and polymer composite materials, perfectly integrated with the shape of traditional roof tiles, creating a new green building material.



Cost-Effective

Replace traditional tiles get power generation benefits



System Match

Stable power generation system | System real-time monitoring | Ensure electricity safety



Super Waterproof

Double waterproof design



Fashion and Beauty

Exclusive patented technology | Bent shape | Perfect integration with building



Installation Convenience

Humanized installation | Installation is same with traditional tiles



T-Max Tile S Series

PHYSICAL PARAMETERS

Product model	JS30DG-6b1/2
Color	Black
Dimensions	586*400mm
Weight	5kg
Glass (material/thickness)	Tempered glass/3.2mm+Tempered glass/3.2mm
Junction box	≥IP67
Cable type	300mm / 4mm ² /Customizable
Plug connector	MC4
Life span	>30years

ELECTRICAL PARAMETERS(STC)

Solar cells	Monocrystalline
Power output (P_{max})	30W
Module efficiency (%)	12.9%
Voltage at Pmax (V_{mpp})	6.36V
Current at Pmax (I_{mpp})	4.72A
Open-circuit current (V_{oc})	7.95V
Short-circuit current (I_{sc})	4.95A

STC: 1000W/m² irradiance , 25 degree cell temperature , AM1.5g.

PERFORMANCE GRADE

Load grade	2400Pa
Fireproofing grade	ClassA
Anti-hail grade	Φ25mm/23m/s
Operating temperature	-40°C~+85°C
Operating humidity	0-80%

OPERATING CONDITIONS

Max. system voltage	1500V _{dc}
Max. series fuse rating	16A
Operating temperature range	-40°C~+85°C
Max. static load, front (e.g., snow)	5400Pa
Max. static load, back (e.g., wind)	2400Pa
Max. hailstone impact (diameter / velocity)	25mm / 23m/s

THERMAL CHARACTERISTICS

Nominal operating cell temperature	NOCT	°C	45 ± 2
Temperature coefficient of P_{max}	γ	%/°C	-0.36
Temperature coefficient of V_{oc}	β_{Voc}	%/°C	-0.30
Temperature coefficient of I_{sc}	α_{Isc}	%/°C	0.05

Due to continuous innovation, research and product improvement, the specifications in this product information sheet are subject to change without prior notice. The specifications may deviate slightly and are not guaranteed.

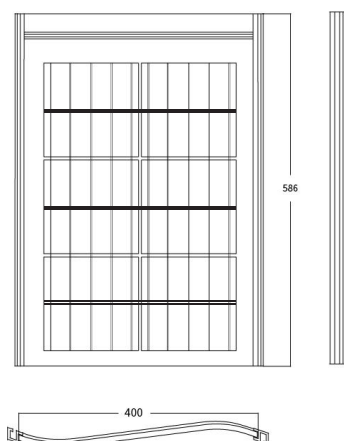
The data do not refer to a single module and they are not part of the offer, they only serve for comparison to different module types.

QUALIFICATIONS AND CERTIFICATIONS

IEC 61215, IEC 61730, 3C, ISO 9001:2015, ISO 14001:2015, ISO 45001: 2018.

DIMENSIONS

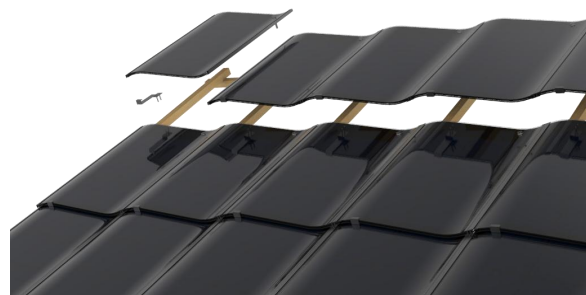
Unit : mm



PRODUCT PICTURE



CONSTRUCTION



Zhejiang San-gobuild Jiasheng New Energy Co., Ltd.

E-mail: info@sgbsolar.com

Hotline: +86-4000 788 771

Address: No. 512, Chongxian Road, Gaole Industrial Park, Gaohong Town, Lin'an District, Hangzhou, Zhejiang Province, China

Web address: www.sgbsolar.com

