



## MATTEO

睿 诺 艺 术

SINUO Art is an artistic enterprise involving installation art chandeliers, installation art, subareas screens and sculpture. We have our own team and standard technological process on research and development, production, installation and after-sales service. We participate in various art exhibitions for communication with open mind actively. MATTEO is a sub-brand of SINUO, he emphasizes on the combination of shape, color, light, shadow and motivation to reach its artistry and marketization.

NAME:

WHATS APP:

WE CHAT:

EMAIL:

MOB:

Factory office





Factory showroom

CONSTRUCTA  
TADTEFUL LIFE  
FOR  
RESIDENTS

LESSO Group office building headquarters!





## LESSO Group office building headquarters!



Size: H15000 \* 23000 \* 10000MM  
Main materials: resin, stainless steel  
Process: Printing/Electroplating  
Light source: LED

## Baoli Time Zone In Chongqing

[Click to play Video](#)



## Baoli Time Zone In Chongqing



Size: H4500 \* 18000 \* 15600MM  
Main material: acrylic  
Process: Hot bending, manual bonding  
Light source: LED programming



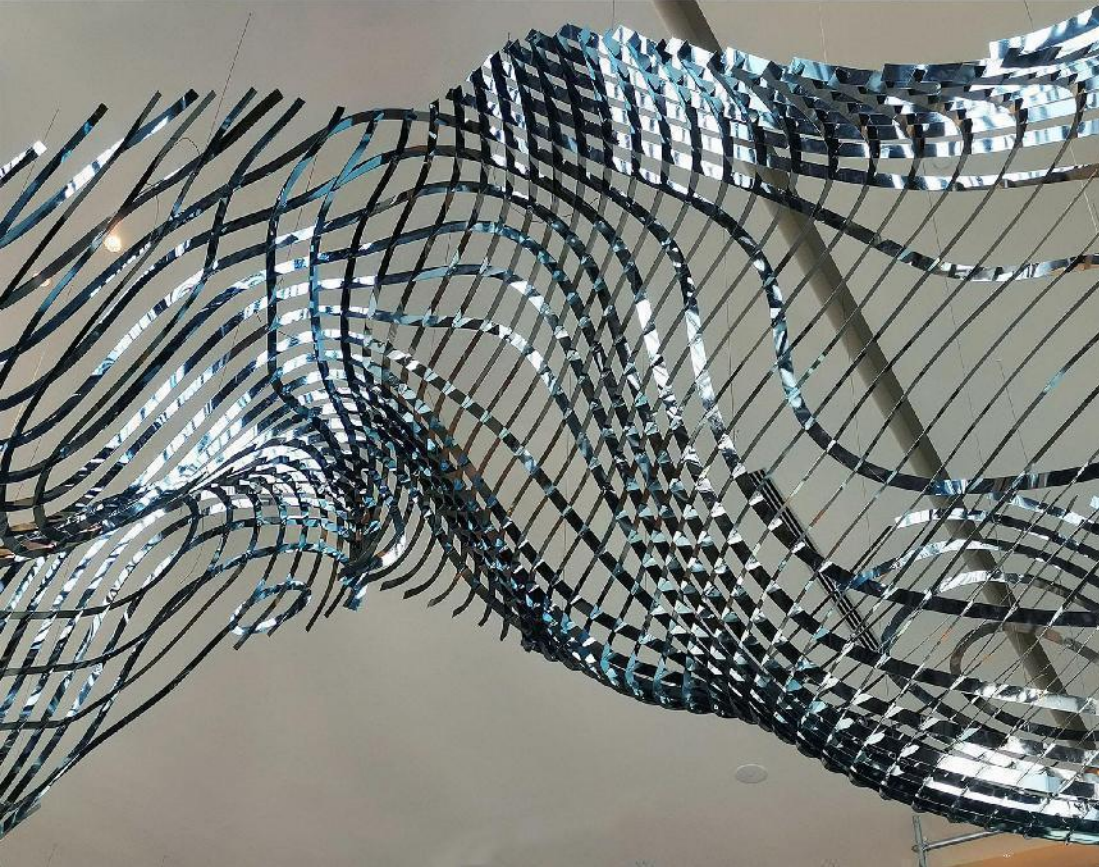
Hiltion hotel In Chongqing





# Hiltion hotel In Chongqing

[Click to play Video](#)



Size: H2800 \* 58000 \* 7000MM

Main material: 2.0 double mirror stainless steel plate

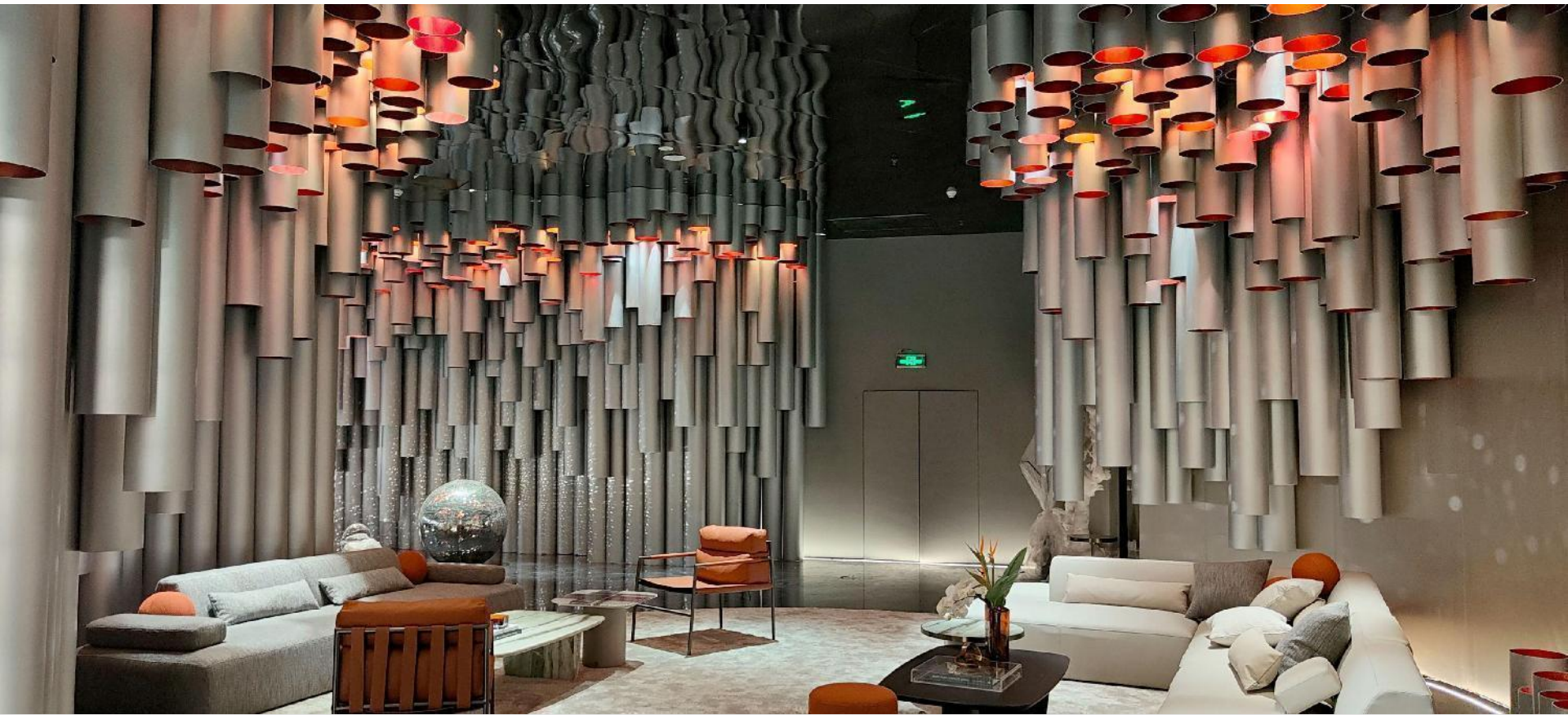
Process: laser cutting, welding, electroplating

Light source: None



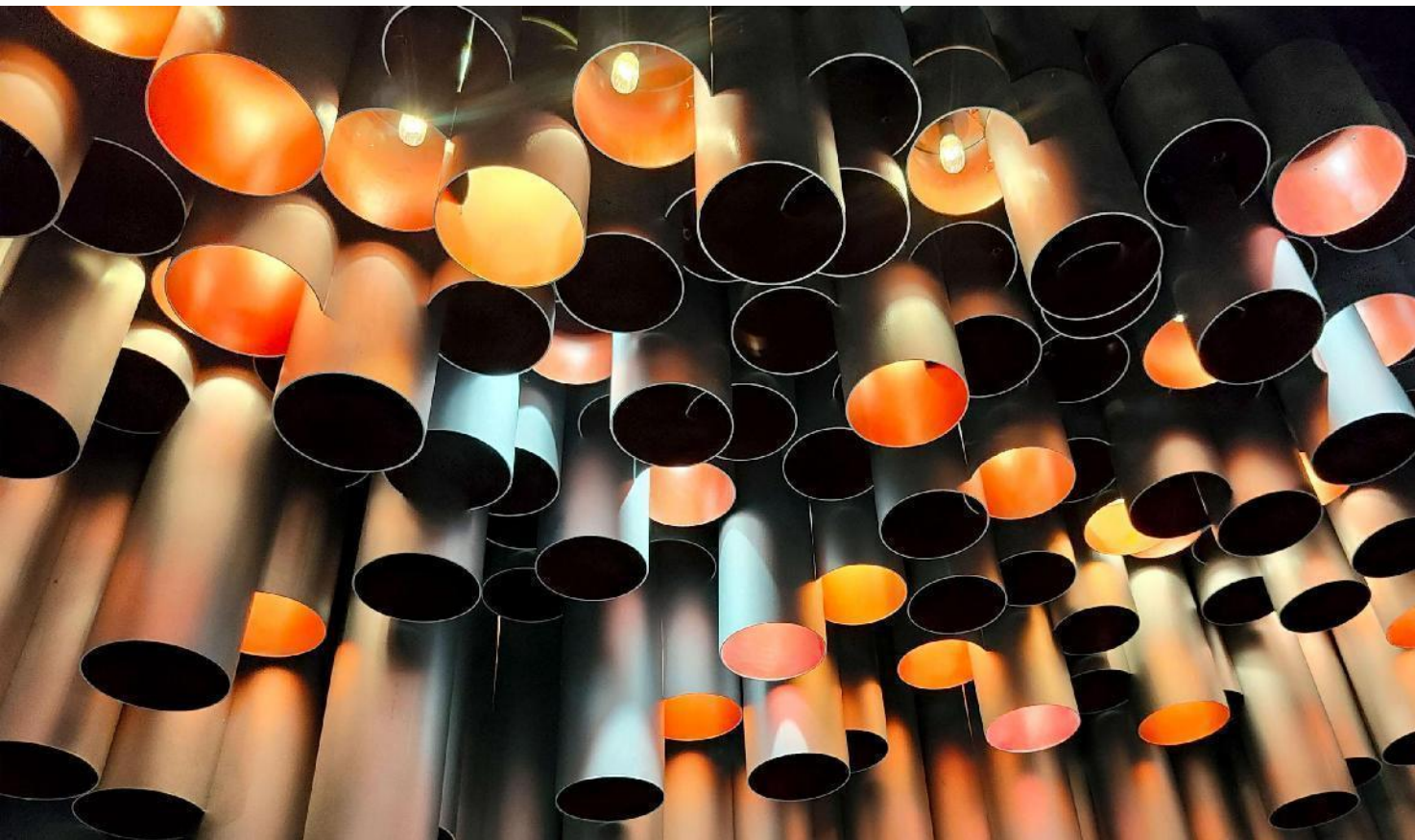
## Furniture Expo Center In Dongguan

[Click to play Video](#)



## Furniture Expo Center In Dongguan

[Click to play Video](#)



Size: H3900 \* 16700 \* 17600MM

Main materials: PVC pipes, wallpaper

Process: Cutting

Light source: LED spotlights



## Convention and Exhibition Center Htel In Xiamen

[Click to play Video](#)





## Convention and Exhibition Center Htel In Xiamen



Size: H4000 \* 3500 \* 3500MM

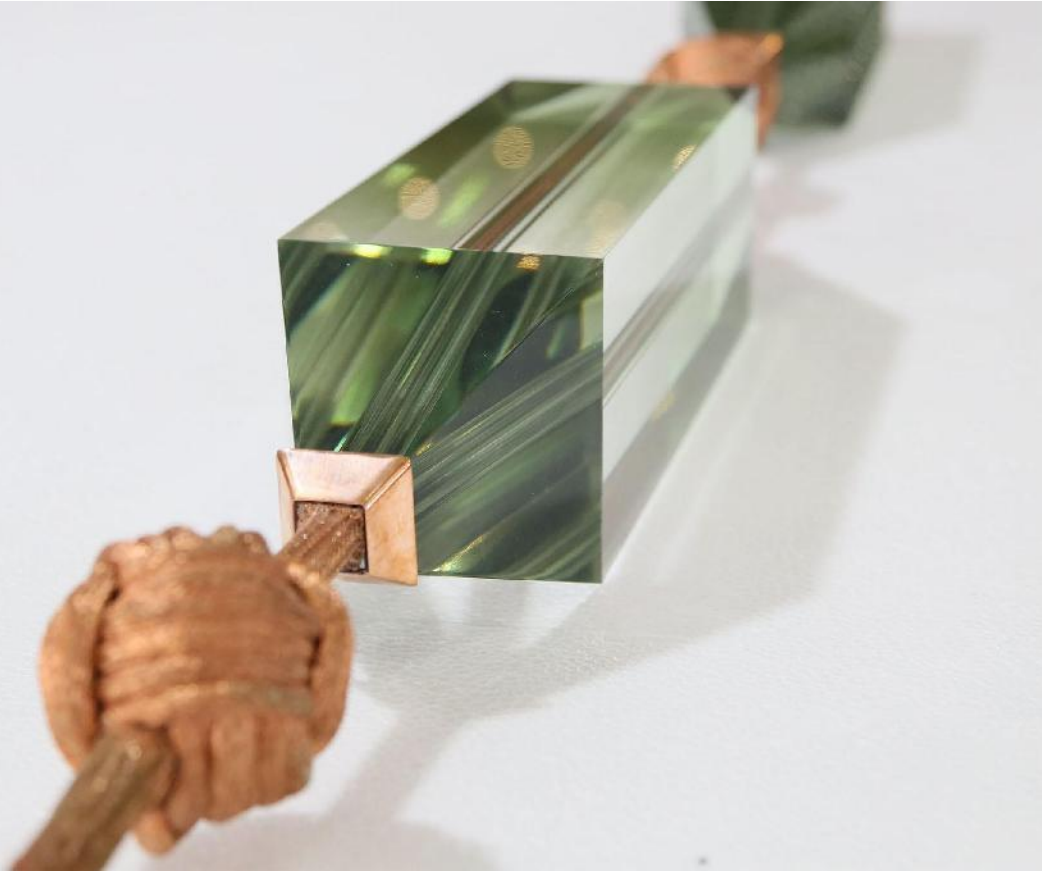
Main materials: stainless steel plate, textured acrylic

Process: Welding, cutting and polishing, silent motor rotation

Light source: None

## Conghua Museum In Guangzhou

[Click to play Video](#)





## Conghua Museum In Guangzhou



Size: H7600 \* 2680 \* 1500MM

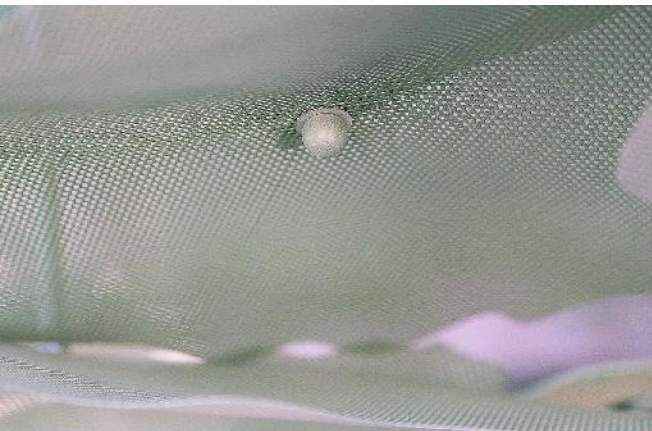
Main material: transparent resin

Auxiliary materials: copper, stainless steel

Light source: LED spotlights



## Oulebao Sales Center In dezhou



Size: H5000 \* 12500 \* 8000MM  
Main material: punched iron plate  
Process: Roast Qi  
Light source: LED spotlights



Oulebao Sales Center In dezhou





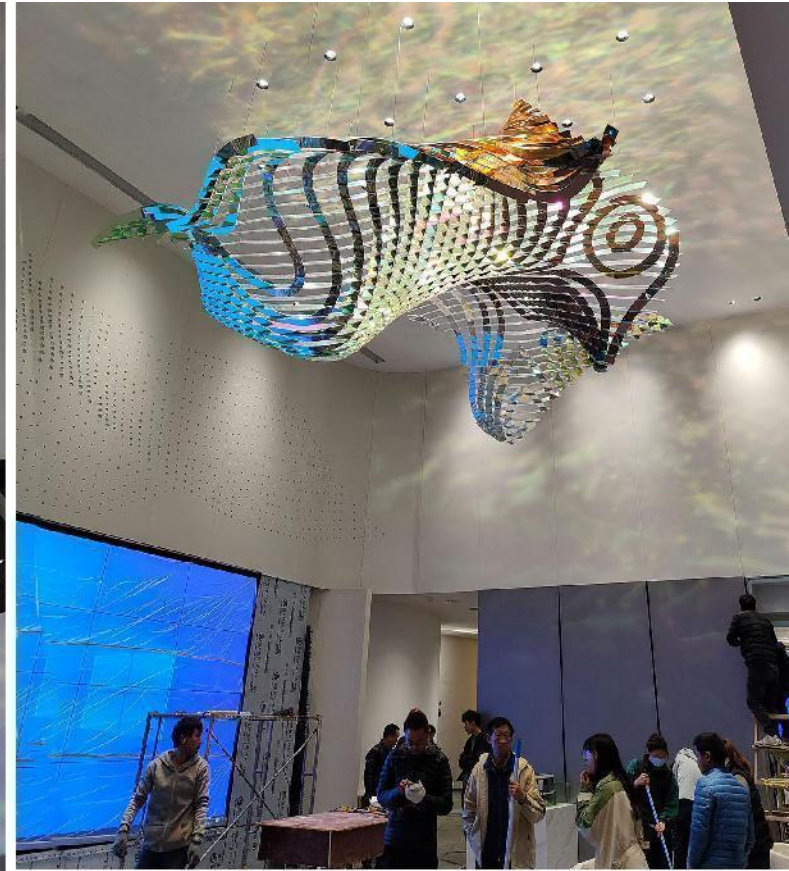
## Xilnhaitiancheng In Yuzhou Hefei



Size: H800 \* 6500 \* 4200MM  
Main material: Colorful acrylic  
Process: cutting, hot bending  
Light source: LED spotlights



## XuHui Sales Department In Pingjiang Suzhou



Size: H2600 \* 4600 \* 5800MM

Main materials: Colorful acrylic,  
double mirror stainless steel

Process: cutting, welding

Light source: LED spotlights



Fashion Home Design Week In Shenzhen





## Fashion Home Design Week In Shenzhen



Size: H2400 \* 6000 \* 3200MM  
Main material: aluminum plate  
Process: Cutting and baking  
Light source: LED spotlights



## Yunxigu In Enshi



Size: H4500 \* 2300 \* 2200MM

Main material: glass

Craftsmanship: hot bending,  
handmade textile

Light source: LED spotlights



## Times of city inChongqing



Size: H2800 \* 12800 \* 3500MM

Main material: acrylic ball

Process: Cutting, electroplating, and dazzling colors

Light source: LED spotlights



## Times of city inChongqing



## Baoli tangyue Sales Department In Yantai



Size: H3800 \* 6000 \* 4100MM

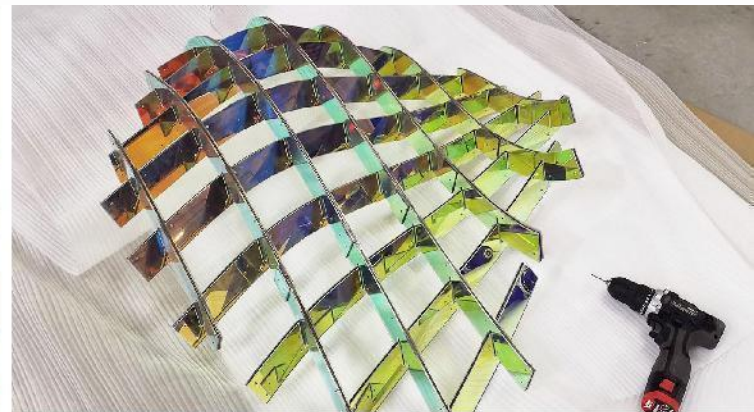
Main material: Murano glass

Craftsmanship: Blown, handmade textile

Light source: LED spotlights



## A sales center in Shanghai



Size: H4300 \* 3900 \* 4200MM

Main materials: Colorful acrylic, stainless steel

Process: cutting, welding

Light source: LED spotlights



## Fenghuang town In Liupanshui Guizhou



Size: H3800 \* 5000 \* 5000MM

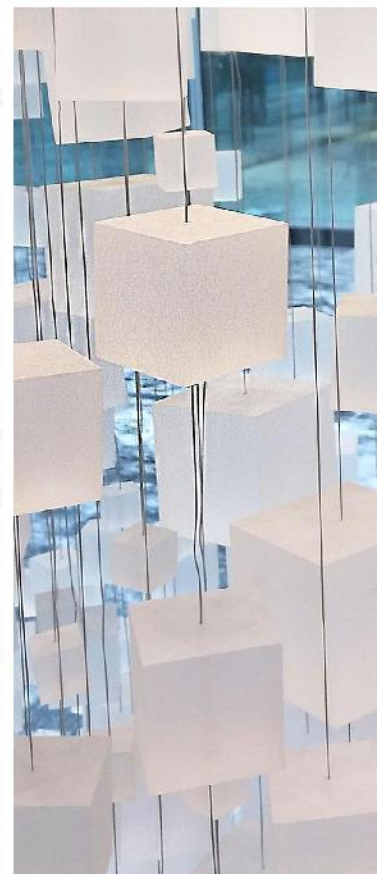
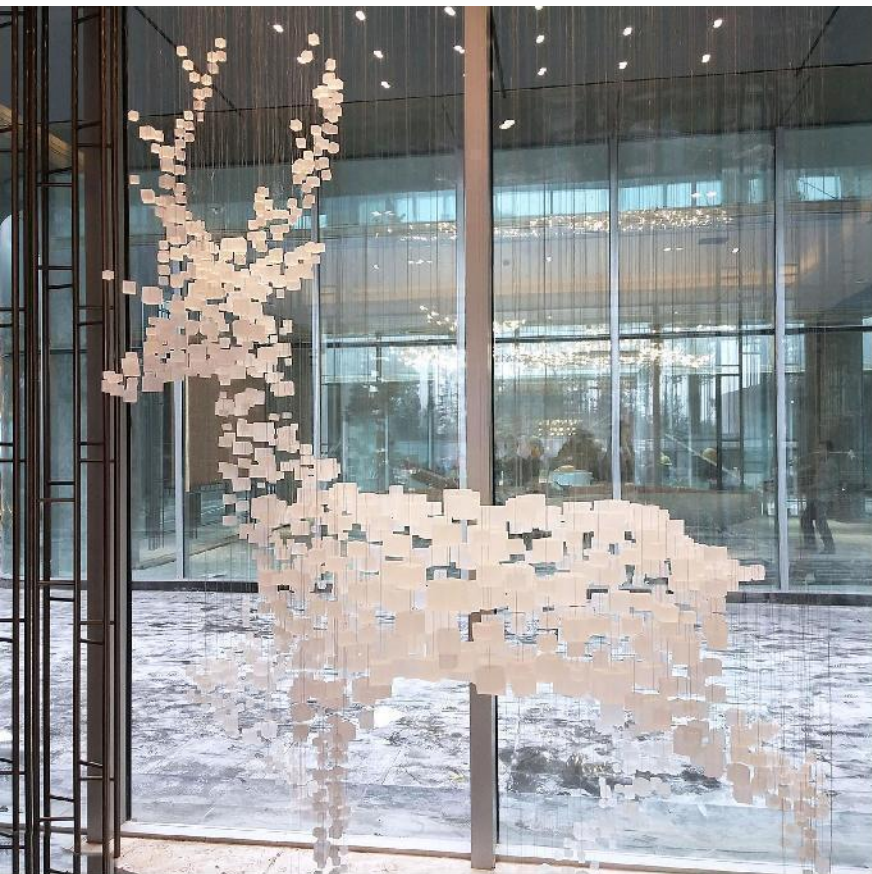
Main material: acrylic

Auxiliary material: stainless steel

Light source: LED



## Zhuoyuexilujiuli In Chongqing



Size: H2400 \* 3500 \* 1200MM

Main material: acrylic

Auxiliary material: stainless steel

Light source: LED spotlights



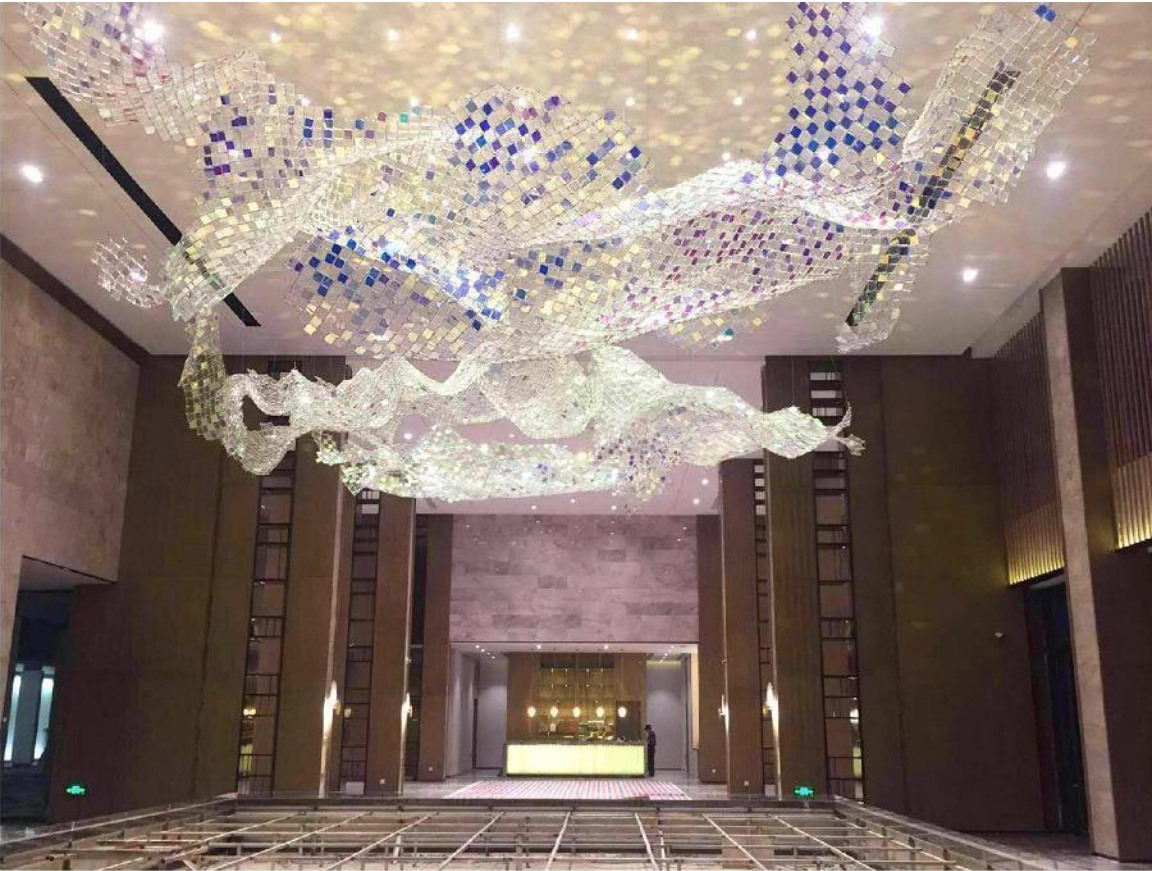
## Dadukou Sales Department In Chongqing



Size: H4000 \* 13700 \* 5600MM  
Main material: Murano glass  
Auxiliary material: steel wire rope  
Light source: LED spotlights



## Jiaxing Asia Pacific Road Sales Center



Size: H2800 \* 12500 \* 8000MM

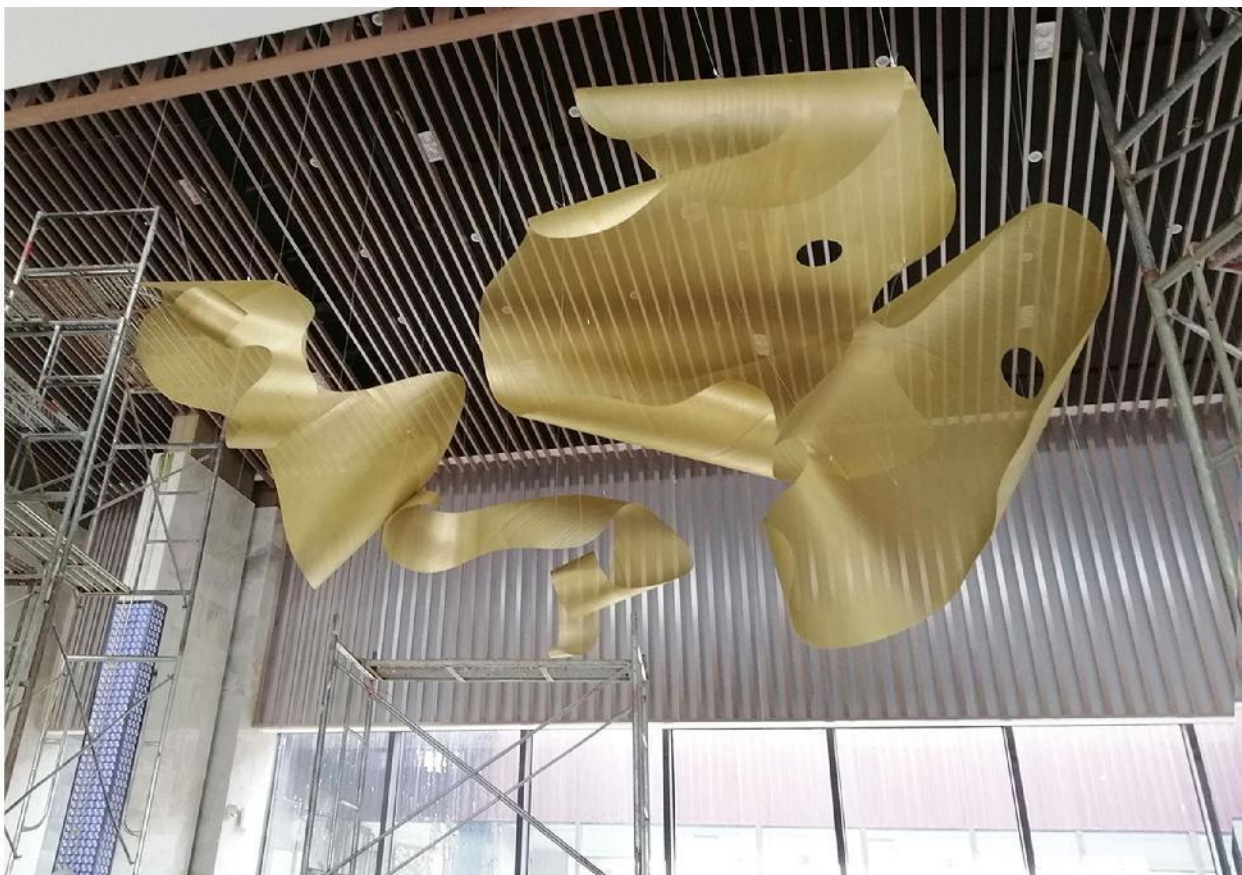
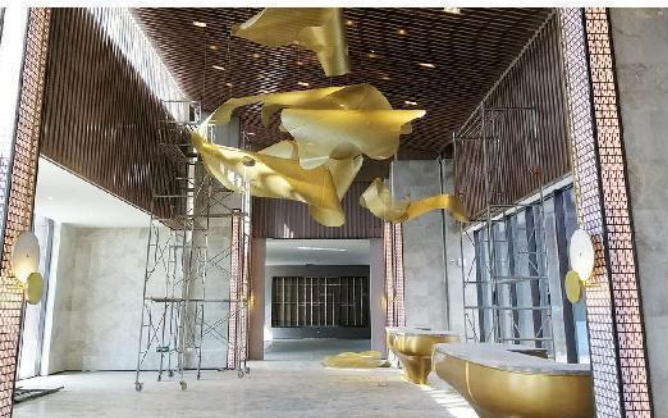
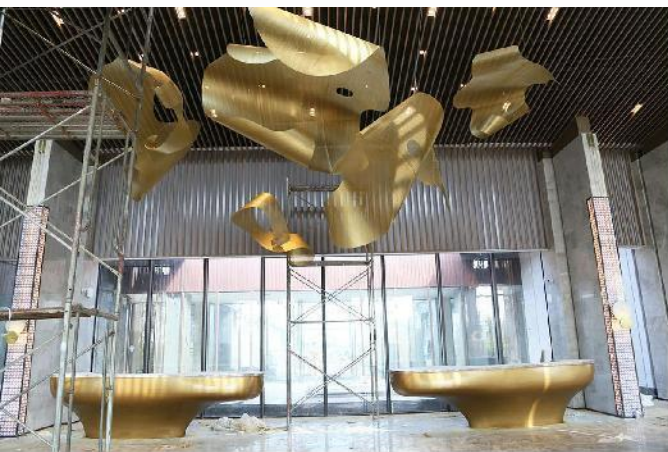
Main material: glass

Auxiliary material: stainless steel mesh

Light source: LED spotlights



## Jiaxing Asia Pacific Road Sales Center



Size: H2800 \* 12400 \* 8300MM

Main material: metal plate

Process: punching and rolling

Light source: LED spotlights



## Greenland Sales Center In Shangrao



Size: H4000 \* 22500 \* 7300MM

Main material: stainless steel

Process: Laser cutting

Light source: LED spotlights



## IFC Shangpin Center In xiamen



Size: H1900 \* 10500 \* 1600mm

Main material: acrylic

Process: frosted cutting

Light source: LED strip



## Shenzhen furniture development and shown



Size: H1200 \* 5000 \* 1300MM

Main material: acrylic

Process: Hot bending

Light source: LED strip

Jingpin Sales Center In ChengDu





## Jingpin Sales Center In ChengDu



Size: H6000 \* 2300 \* 2300MM  
Main material: Murano glass  
Auxiliary material: stainless steel  
Light source: LED



## Jiufang Shopping Center In Shenzhen



Size: H5000 \* 17500 \* 7100MM  
Main material: Murano glass  
Auxiliary material: stainless steel  
Light source: LED





Thank you for your attention! If you need to learn more, please contact our business manager, who will provide you with professional explanations on the details and process of high-end customization.

Building 1, No 27 Huanzhen North Road, Henglan Town, Zhongshan City, Guangdong Province  
Website: [www.matteochandelier.com](http://www.matteochandelier.com)