

2022

# 数控 刀具车 / 工具柜

Tool management vehicle Tool management cabinet



行业领先品牌产品

新品热卖 全国包邮

**LYREIGN**<sup>®</sup>  
CNC TOOL STORAGE SYSTEMS



# 刀具车/工具柜

LYREIGN BRAND TOOL CAR, TOOLS CABINET

## 瑞格品牌刀具车

LYREIGN BRAND TOOL CAR, TOOLS CABINET

瑞格刀具车，规格齐全、款式众多，可满足不同场合的不种需求。从研发到生产，每一个细节都力争完美，只为每一件产品都能不同凡响。我们将带着追求极致的精神和独具匠心的创造力，为机械制造类企业呈现高品质的钣金类产品而努力！

LYREIGN tool cart has complete specifications and many styles, which can meet different needs on different occasions. From R & D to production, every detail strives for perfection, only for each product to be extraordinary. We will bring the pursuit of the ultimate spirit and originality of creativity for machinery manufacturing Class enterprises strive to present high-quality sheet metal products!



工厂



仓库



展会

# Contents

## 目录

### **01 Tools partner( 刀具伴侣 )**

- 小型机床 /For Small CNC machine tools
- 中型机床 /For Medium CNC machine tools
- 大型机床 /For Large CNC machine tools

### **02 Tools Keeper( 刀具管理员 )**

- 刀具架 /Shelf of management tools
- 刀具柜 /Cabinet of management tools

### **03 Tools Station( 工作站 )**

- 工作台 /Work table

### **04 Tools cart( 转运刀具车 )**

- 转运刀具车 /Transfer tools cart

### **05 Machine tool accessories( 机床附件 )**





- 脚踏板 /Pedal of CNC machine tool
- 锁刀座 /CNC Holder Tightening Fixture

**01 // 刀具伴侣** Tools partner

**小型机床 / For Small CNC machine tools**

<p><b>01. 刀具车</b> Tools partner</p> <p>产品型号 / Product name: RGT-ZG02</p> <p>产品规格 / Product size: W573*D470*H920+390MM</p> <p>详情参考第11页 Details are on page 11</p>		<p><b>02. 刀具车</b> Tools partner</p> <p>产品型号 / Product name: RGT-ZG01</p> <p>产品规格 / Product size: W573*D470*H920+390MM</p> <p>详情参考第11页 Details are on page 11</p>	
<p><b>03. 工具车</b> Tools partner</p> <p>产品型号 / Product name: RGW-G08ZG</p> <p>产品规格 / Product size: W573*D470*H920+390MM</p> <p>详情参考第23页 Details are on page 23</p>		<p><b>04. 工具车</b> Tools partner</p> <p>产品型号 / Product name: RGW-G07ZG</p> <p>产品规格 / Product size: W573*D470*H920+390MM</p> <p>详情参考第23页 Details are on page 23</p>	
<p><b>05. 刀具车</b> Tools partner</p> <p>产品型号 / Product name: RGW-SYC-刀具车</p> <p>产品规格 / Product size: W600*D400*H900+360MM</p> <p>详情参考第15页 Details are on page 15</p>		<p><b>06. 工具车</b> Tools partner</p> <p>产品型号 / Product name: RGW-SYC-工具车</p> <p>产品规格 / Product size: W600*D400*H900+360MM</p> <p>详情参考第15页 Details are on page 15</p>	

**中型机床 / For Medium sized CNC machine tools**

<p><b>07. 刀具车</b> Tools partner</p> <p>产品型号 / Product name: PIE-P01C</p> <p>产品规格 / Product size: W720*D445*H1366MM</p> <p>详情参考第8页 Details are on page 8</p>					
			<p><b>冷轧钢板+木板拼接设计</b>   桌面可放刀柄，台面采用木板拼接，外观豪华现代，非常实用！</p>	<p><b>双层抽屉设计</b>   双层抽屉设计，上层抽屉带分隔，下层抽屉为整体式抽屉。</p>	<p><b>可加装锁刀座 (需另购)</b>   侧面可加装原装锁刀座，方便拆卸刀柄，拉钉。</p>

\* SK/JT/NT/DIN69871/69872 系列与 BT 系列存储通用，如有需要请选择！



**08. 刀具车**  
Tools partner



产品型号 / Product name:  
PIE-P06C

产品规格 / Product size:  
W720\*D445\*H980+390MM

详情参考第9页  
Details are on page 9



**09. 工具车**  
Tools partner



产品型号 / Product name:  
PIE-P06C

产品规格 / Product size:  
W720\*D445\*H980+390MM

详情参考第9页  
Details are on page 9



**10. 刀具车**  
Tools partner



产品型号 / Product name:  
PIE-P02C

产品规格 / Product size:  
W720\*D456\*H1137MM

详情参考第8页  
Details are on page 8



**11. 刀具车**  
Tools partner



产品型号 / Product name:  
RGT-J06C

产品规格 / Product size:  
W720\*D420\*H975+420MM

详情参考第7页  
Details are on page 7



**12. 刀具车**  
Tools partner

产品型号 / Product name:  
RGT-J04C

产品规格 / Product size:  
W720\*D420\*H980+220MM

详情参考第10页  
Details are on page 10



**13. 刀具车**  
Tools partner

产品型号 / Product name:  
RGT-J03C

产品规格 / Product size:  
W720\*D420\*H980+220MM

详情参考第10页  
Details are on page 10



**14. 工具车**  
Tools Partner

产品型号 / Product name:  
RGW-G06

产品规格 / Product size:  
W720\*D420\*H980+390MM

详情参考第23页  
Details are on page 23



**15. 工具车**  
Tools Partner

产品型号 / Product name:  
RGW-G05

产品规格 / Product size:  
W720\*D420\*H980+390MM

详情参考第23页  
Details are on page 23



\* SK/JT/NT/DIN69871/69872 系列与 BT 系列存储通用，如有需要请选择！

## 16. 刀具车

Tools partner

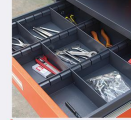
产品型号 / Product name:  
RGT-M01C

产品规格 / Product size:  
W720\*D500\*H1020+500MM

详情参考第9页  
Details are on page 9



**方形加强筋设计**  
承重强，可轻松支撑300公斤重量！



**双层抽屉设计**  
双层抽屉设计，上层抽屉带分隔，下层抽屉为整体式抽屉。



**可加装锁刀座 (需另购)**  
侧面可加装原装锁刀座，方便拆卸刀柄、拉钉。

## 02 // 刀具管理系列 Tools Keeper

### 17. 刀具管理架 / Shelf of management tools

#### 17. A型刀具架

Tools keeper

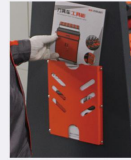
产品型号 / Product name:  
RGT-DJ103C-B

产品规格 / Product size:  
W880\*D660\*H1540MM

详情参考第16页  
Details are on page 16



**免装螺丝刀套**  
免装螺丝刀套，组装快捷，节省工人安装时间。



**两侧图纸兜**  
两侧有图纸兜，可存放图纸。



**可调节防滑脚**  
可调节高度，应对不平整地面。使用方便！

#### 18. L型刀具架

Tools keeper

产品型号 / Product name:  
RGT-DJ103C-A

产品规格 / Product size:  
W880\*D500\*H1540MM

详情参考第16页  
Details are on page 16



#### 19. L型刀具架

Tools keeper

产品型号 / Product name:  
RGT-DJ104C

产品规格 / Product size:  
W865\*D495\*H1015MM

详情参考第20页  
Details are on page 20



### 18. 刀具存储柜系列 / Cabinet of management tools

#### 20. 刀具柜

Tools keeper

产品型号 / Product name:  
RGT-DJGX04A/B/C/D/E/工具柜

产品规格 / Product size:  
W850\*D550\*H1830MM

详情参考第21页  
Details are on page 21



**03 // 工作站** Tools Station

**工作台 / Work bench**

**21. 工作台C1款**  
Tools station

产品型号 / Product name:  
RGT-SDTC1C

产品规格 / Product size:  
W700\*D450\*H800+220MM

详情参考第19页  
Details are on page 19



**22. 工作台C2款**  
Tools station

产品型号 / Product name:  
RGT-SDTC2C

产品规格 / Product size:  
W700\*D450\*H800+220MM

详情参考第19页  
Details are on page 19



**23. 工作台B1款**  
Tools station

产品型号 / Product name:  
RGT-SDTB1C

产品规格 / Product size:  
W880\*D555\*H800+615MM

详情参考第18页  
Details are on page 18



**24. 工作台B2款**  
Tools station

产品型号 / Product name:  
RGT-SDTB2C

产品规格 / Product size:  
W880\*D555\*H800+500MM

详情参考第18页  
Details are on page 18



**25. 锁刀工作台D款**  
Tools station

产品型号 / Product name:  
RGT-SDTD1C

产品规格 / Product size:  
W1280\*D685\*H800+615MM

详情参考第20页  
Details are on page 20



**26. 攻丝机工作台**  
Tools station

产品型号 / Product name:  
RGT-GSJ02

产品规格 / Product size:  
W900\*D600\*H730MM

详情参考第13页  
Details are on page 13



**04 // 转运刀具车** Tools Cart

**转运刀具车 / Transfer tools cart**

**27. 转运刀具车**  
Tools cart

产品型号 / Product name:  
RGT-ZYCA1

产品规格 / Product size:  
W650\*D500\*H800MM

详情参考第14页  
Details are on page 14



**28. 转运刀具车-加长款**  
Tools cart

产品型号 / Product name:  
RGT-ZYCA2

产品规格 / Product size:  
W850\*D500\*H800MM

详情参考第14页  
Details are on page 14



\* SK/JT/NT/DIN69871/69872 系列与 BT 系列存储通用，如有需要请选择！

**29. 简易刀具车E款**  
Tools cart

产品型号 / Product name:  
RGT-JYCEC

产品规格 / Product size:  
W575\*D470\*H810+400MM

详情参考第22页  
Details are on page 22



**30. 简易刀具车F款**  
Tools cart

产品型号 / Product name:  
RGT-JYFC

产品规格 / Product size:  
W575\*D470\*H810+400MM

详情参考第22页  
Details are on page 22



**05** // 机床附件 Machine tool accessories

**I 脚踏板系列 / Pedal of CNC machine tool**

**31. 机床脚踏板-接油盘**  
Pedal of CNC machine tool

产品型号 / Product name:  
CW-1260/1680-O

产品规格 / Product size:  
W1260\*D660\*H150MM  
W1600\*D800\*H150MM

详情参考第24页  
Details are on page 24





**镀锌钢板接油盘**  
底部配置一张镀锌钢板接油盘，不易生锈。

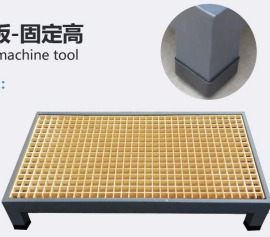
**加强方形站脚**  
方形站脚，承重力强！

**32. 机床脚踏板-固定高**  
Pedal of CNC machine tool

产品型号 / Product name:  
CW-1260/1680-B

产品规格 / Product size:  
W1260\*D660\*H150MM  
W1600\*D800\*H150MM

详情参考第24页  
Details are on page 24


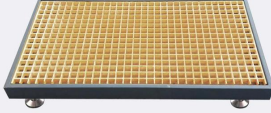


**33. 机床脚踏板-可调站脚**  
Pedal of CNC machine tool

产品型号 / Product name:  
CW-1260/1680-A

产品规格 / Product size:  
W1260\*D660\*H130-180MM  
W1600\*D800\*H130-180MM

详情参考第24页  
Details are on page 24

**I 机床附件 / CNC Holder Tightening Fixture**

**34. U型锁刀座**  
CNC Holder Tightening Fixture

产品型号 / Product name:  
Utype

U-type (table type)  
tool holder

详情参考第23页  
Details are on page 23



**35. L型锁刀座**  
CNC Holder Tightening Fixture

产品型号 / Product name:  
Ltype

L-type (table type)  
tool holder

详情参考第23页  
Details are on page 23



**36. C型锁刀座**  
CNC Holder Tightening Fixture

产品型号 / Product name:  
Ctype

C-type (table type)  
tool holder

详情参考第23页  
Details are on page 23



\* SK/JT/NT/DIN69871/69872 系列与 BT 系列存储通用，如有需要请选择！





新品上市



■ 双层抽屉，首层抽屉带分隔  
Double drawer, upper drawer with partition



■ 柜子内部有一层平板，可放工具  
There is a layer of light board in the cabinet



■ 柜子侧面可加装锁刀座（需另购）  
Tool lock seat can be installed on the side



■ 侧面图纸兜，可放文件  
It can be used with hook bag

### 刀具车 Tools partner

产品型号 Product name : PIE-P01C	产品尺寸 Product size : W720*D445*H1366MM		
钢板厚度：根据不同位置承重要求不同，采用 1.0-1.5MM 厚冷轧钢板。 Thickness: According to different load bearing of each position 1.0-1.5 thick steel plate is used.			
产品规格 Model Number	BT30	BT40	HSK63
存储数量 (个) Capacity (number)	11	9	9



新品上市



■ 加厚木质台面，保护刀柄、工具  
Thick wooden countertop



■ 双层抽屉，首层抽屉带分隔  
Double drawer, upper drawer with partition



■ 柜内一层刀套板，可放刀柄  
Double drawer with partition on top



■ 侧面图纸兜，可放文件  
It can be used with hook bag

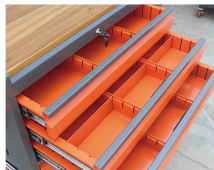
### 刀具车 Tools partner

产品型号 Product name : PIE-P02C	产品尺寸 Product size : W720*D456*H1137MM		
钢板厚度：根据不同位置承重要求不同，采用 1.0-1.5MM 厚冷轧钢板。 Thickness: According to different load bearing of each position 1.0-1.5 thick steel plate is used.			
产品规格 Model Number	BT30	BT40	HSK63
存储数量 (个) Capacity (number)	28 ( 11+17 )	26 ( 9+17 )	26 ( 9+17 )

\* SK/JT/NT/DIN69871/69872 系列与 BT 系列存储通用，如有需要请选择！



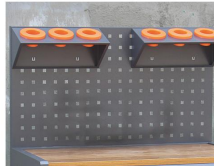
**刀具车 Tools partner**



■ 上三层抽屉带分隔，可调节大小  
Upper three drawers with compartments



■ 下三层抽屉无分隔，一体式  
The bottom three drawers are not separated



■ 两个小刀柄架，可根据需求摆放  
Two small tool holders can be adjusted

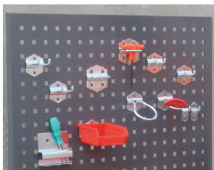


■ 柜体侧面可加装锁刀座（需另购）  
Tool lock seat can be installed on the side

产品型号 Product name : PIE-P06C	产品尺寸 Product size : W720*D445*H980+390MM		
钢板厚度：根据不同位置承重要求不同，采用 1.0-1.5MM 厚冷轧钢板。 Thickness: According to different load bearing of each position 1.0-1.5thick steel plate is used.			
产品规格 Model Number	BT30	BT40	HSK63
存储数量 (个) Capacity (number)	6	6	6



**刀具车 Tools partner**



■ 方孔挂板，可配挂钩（需另购）  
Square hole hanging board with hook



■ 加厚木质台面，保护刀柄、工具  
Thick wooden countertop



■ 侧面图纸兜，可放文件  
It can be used with hook bag



■ 上三层抽屉有分隔，下三层抽屉一体式  
The upper three drawers are divided

产品型号 Product name : PIE-P06C	产品尺寸 Product size : W720*D445*H980+390MM		
钢板厚度：根据不同位置承重要求不同，采用 1.0-1.5MM 厚冷轧钢板。 Thickness: According to different load bearing of each position 1.0-1.5thick steel plate is used.			



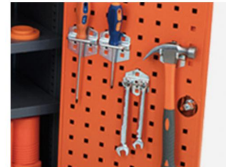
■侧面可加装锁刀座 (需另购)  
Tool lock seat can be installed on the side



■双层抽屉设计, 上层有分隔  
Double drawer with partition on top



■柜子内部一层可调刀具板  
One layer adjustable cutter board inside the cabinet



■可搭配挂钩包使用 (需另购)  
It can be used with hook bag

**刀具车 Tools partner**

产品型号 Product name:	RGT-J04C		产品尺寸 Product size:	W720*D420*H980+220MM			
钢板厚度: 根据不同位置承重要求不同, 采用 1.0-1.5MM 厚冷轧钢板。 Thickness: According to different load bearing of each position 1.0-1.5 thick steel plate is used.							
产品规格 Model Number	BT30	BT40	BT50	HSK40	HSK50	HSK63	HSK100
存储数量 (个) Capacity (number)	31 (14+17)	29 (12+17)	24 (10+14)	31 (14+17)	31 (14+17)	29 (12+17)	15 (5+10)



■ABS 原料加厚刀套, 结实耐用  
ABS raw material thickened tool sleeve



■抽屉带分隔, 分类明确  
Drawer with partition, clear classification



■一层放刀柄, 一层放工具  
Put the handle on the top and tools on the bottom



■加宽加大把手, 推拉更省力  
Widen the handle to push and pull conveniently

**刀具车 Tools partner**

产品型号 Product name:	RGT-J03C		产品尺寸 Product size:	W720*D420*H980+220MM			
钢板厚度: 根据不同位置承重要求不同, 采用 1.0-1.5MM 厚冷轧钢板。 Thickness: According to different load bearing of each position 1.0-1.5 thick steel plate is used.							
产品规格 Model Number	BT30	BT40	BT50	HSK40	HSK50	HSK63	HSK100
存储数量 (个) Capacity (number)	31 (14+17)	29 (12+17)	24 (10+14)	31 (14+17)	31 (14+17)	29 (12+17)	15 (5+10)

\* SK/JT/NT/DIN69871/69872 系列与 BT 系列存储通用, 如有需要请选择!



**刀具车 Tools partner** ▾



■ 三层抽屉，首层抽屉带分隔  
Tool lock seat can be installed on the side



■ 柜子内部有一层刀套板，可放刀柄  
Double drawer with partition on top



■ 柜子侧面可加装锁刀座 (需另购)  
One layer adjustable cutter board inside the cabinet



■ 侧面图纸兜，可放文件  
It can be used with hook bag

产品型号 Product name : RGT-ZG04	产品尺寸 Product size : W573*D470*H920+390MM			
钢板厚度：根据不同位置承重要求不同，采用 1.0-1.5MM 厚冷轧钢板。 Thickness: According to different load bearing of each position 1.0-1.5 thick steel plate is used.				
产品规格 Model Number	BT30	BT40	HSK50	HSK63
存储数量 (个) Capacity (number)	27 ( 9+18 )	24 ( 9+15 )	27 ( 9+18 )	24 ( 9+15 )



**刀具车 Tools partner** ▾



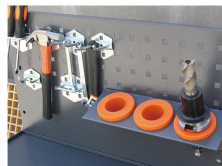
■ 双层抽屉，上层抽屉带分隔片  
Double drawer, upper drawer with partition



■ 柜子内部有一层刀套板，可调高度  
One layer adjustable knife sleeve plate



■ 三个小刀柄架，可放挂板和侧面  
Three small toolholders



■ 方孔挂板，搭配挂钩 (需另购)  
Square hole hanging board with hook

产品型号 Product name : RGT-ZG03	产品尺寸 Product size : W573*D470*H920+390MM			
钢板厚度：根据不同位置承重要求不同，采用 1.0-1.5MM 厚冷轧钢板。 Thickness: According to different load bearing of each position 1.0-1.5 thick steel plate is used.				
产品规格 Model Number	BT30	BT40	HSK50	HSK63
存储数量 (个) Capacity (number)	27 ( 9+18 )	24 ( 9+15 )	27 ( 9+18 )	24 ( 9+15 )

\* SK/JT/NT/DIN69871/69872 系列与 BT 系列存储通用，如有需要请选择！





**刀具车 Tools partner**



■平面上全部放满刀套，刀柄数多  
The platform is full of knife covers



■双层抽屉，上层抽屉带分隔片  
Double drawer, upper drawer with partition



■下层加大储物空间  
The lower layer increases the storage space

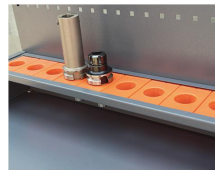


■加宽加大把手，推拉更省力  
Lengthening and widening handle

产品型号 Product name: RGT-M01C	产品尺寸 Product size: W720*D500*H1020+500MM		
钢板厚度: 根据不同位置承重要求不同, 采用 1.0-1.5MM 厚冷轧钢板。 Thickness: According to different load bearing of each position 1.0-1.5thick steel plate is used.			
产品规格 Model Number	BT40	BT50	HSK63
存储数量 (个) Capacity (number)	25	15	20



**刀具车 Tools partner**



■桌面刀套可放置刀柄 / 可装夹头  
The platform is full of knife covers



■双层抽屉，上层抽屉带分隔片  
Double drawer, upper drawer with partition



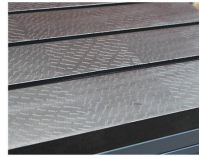
■柜子内部有一层刀套板，可调高度  
Double drawer with partition on top



■柜子侧面可加装锁刀座 (需另购)  
Tool lock seat can be installed on the side

产品型号 Product name: RGT-J06C	产品尺寸 Product size: W720*D420*H975+420MM					
钢板厚度: 根据不同位置承重要求不同, 采用 1.0-1.5 厚冷轧钢板。 Thickness: According to different load bearing of each position 1.0-1.5 thick steel plate is used.						
产品规格 Model Number	BT30	BT40	BT50	HSK40	HSK50	HSK63
存储数量 (个) Capacity (number)	30 ( 13+17 )	26 ( 9+17 )	16 ( 6+10 )	32 ( 13+19 )	32 ( 13+19 )	26 ( 9+17 )

\* SK/JT/NT/DIN69871/69872 系列与 BT 系列存储通用，如有需要请选择！



■ 铸铁平台，T型槽设计  
Cast iron platform with T-groove



■ 单层抽屉设计，放工具刀片等  
Single layer drawer design



■ 下层加大储物空间，可放工具等  
Increase storage space on the lower level



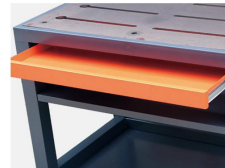
■ 聚氨酯方向脚轮，推动更平稳  
Polyurethane caster for smooth driving

### 攻丝机工作台 Tools station

产品型号 Product name : RGT-GSJ01	产品尺寸 Product size : W900*D600*H850MM				
	长度 length	宽度 width	高度 high	T型槽 T-slot	T槽宽 T slot width
	900	600	900	3	130
<p>钢板厚度：根据不同位置承重要求不同，采用 1.2MM 厚冷轧钢板。 Thickness : According to different load bearing of each position 1.2mm thick steel plate is used.</p>					



■ 铸铁平台，平整耐磨  
Cast iron platform with T-groove



■ 单层抽屉设计，放工具刀片等  
Single layer drawer design



■ 两侧有方孔挂板，可加装挂钩  
Square hole hanging plate on both sides



■ 配置螺栓，四角可固定地面  
The four corners can be fixed on the ground

### 攻丝机工作台 Tools station

产品型号 Product name : RGT-GSJ02	产品尺寸 Product size : W900*D600*H730MM
<p>钢板厚度：根据不同位置承重要求不同，采用 1.2MM 厚冷轧钢板。 Thickness : According to different load bearing of each position 1.2mm thick steel plate is used.</p>	



■加厚原料刀套，免安装螺丝  
ABS raw material loading free tool sleeve



■刀套板可根据需求调节高低  
One layer adjustable cutter board inside the cabinet



■加宽加大把手，推拉更省力  
Widen the handle to push and pull conveniently



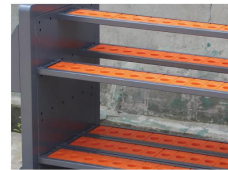
■侧面图纸兜，可放文件  
It can be used with hook bag

**转运刀具车 Tools keeper**

产品型号 Product name : RGT-ZYCA1	产品尺寸 Product size: W650*D500*H800MM					
钢板厚度：根据不同位置承重要求不同，采用 1.0-1.5MM 厚冷轧钢板。 Thickness : According to different load bearing of each position 1.0-1.5thick steel plate is used.						
产品规格 Model Number	BT30	BT40	BT50	HSK40	HSK50	HSK63
存储数量 (个) Capacity (number)	60	42	30	48	48	42



■两个零件盒，方便分类整理  
Two parts boxes for easy sorting



■刀套板可根据需求调节高低  
One layer adjustable cutter board inside the cabinet



■底部可储物，承重强，空间大  
The lower layer increases the storage space



■聚氨酯万向脚轮，推动更平稳  
Polyurethane caster for smooth driving

**转运刀具车 Tools keeper**

产品型号 Product name : RGT-ZYCA2	产品尺寸 Product size: W850*D500*H800MM			
钢板厚度：根据不同位置承重要求不同，采用 1.0-1.5MM 厚冷轧钢板。 Thickness : According to different load bearing of each position 1.0-1.5 thick steel plate is used.				
产品规格 Model Number	BT40	BT50	HSK63	HSK100
存储数量 (个) Capacity (number)	60	42	60	42

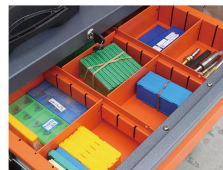
\* SK/JT/NT/DIN69871/69872 系列与 BT 系列存储通用，如有需要请选择！



**刀具车 Tools Partner** ▾



■ 方孔挂板, 可配挂钩 (需另购)  
Square hole hanging board with hook



■ 单层抽屉设计, 放工具刀片等  
Single layer drawer design



■ 加厚原料刀套, 免安装螺丝  
ABS raw material loading free tool sleeve



■ 加宽加大把手, 推拉更省力  
Widen the handle to push and pull conveniently

产品型号 Product name : RGT-SYC	产品尺寸 Product size : W575*D470*H910+400MM						
钢板厚度 : 根据不同位置承重要求不同, 采用 1.0-1.5MM 厚冷轧钢板。 Thickness : According to different load bearing of each position 1.0-1.5thick steel plate is used.							
产品规格 Model Number	BT30	BT40	BT50	HSK40	HSK50	HSK63	HSK100
存储刀柄数量 (个) Capacity (number)	60	42	30	48	48	42	30



**工具车 Tools cart** ▾



■ 单层抽屉设计, 放工具刀片等  
Single layer drawer design



■ 三层工具板, 大储物空间  
Three-layer tool board, large storage space



■ 侧面图纸兜, 可放文件  
It can be used with hook bag



■ 聚氨酯万向脚轮, 推动更平稳  
Polyurethane castor for smooth driving

产品型号 Product name : RGW-SYC	产品尺寸 Product size : W575*D470*H910+400MM						
钢板厚度 : 根据不同位置承重要求不同, 采用 1.0-1.5MM 厚冷轧钢板。 Thickness : According to different load bearing of each position 1.0-1.5 thick steel plate is used.							

\* SK/JT/NT/DIN69871/69872 系列与 BT 系列存储通用, 如有需要请选择!





**A 型刀具架 Tools keeper**



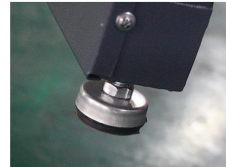
■ 免安装刀套，共 16 排刀架板  
There are 16 rows of tool carrier plates



■ 两侧全封闭式支撑设计  
Fully enclosed support on both sides



■ 两侧图纸兜，可存放资料  
There are drawing pockets on both sides



■ 可调节防滑站脚  
Adjustable antiskid foot

产品型号 Product name : RGT-DJ103C-B	产品尺寸 Product size: W880*D660*H1540MM					
钢板厚度：根据不同位置承重要求不同，采用 2.0MM 厚冷轧钢板。 Thickness: According to different load bearing of each position 2.0thick steel plate is used.						
产品规格 Model Number	BT30	BT40	BT50	HSK50	HSK63	HSK100
存储数量 (个) Capacity (number)	224	160	112	192	160	112



**L 型刀具架 Tools keeper**



■ 新型免装刀套，共 8 排刀架板  
There are 8 rows of tool carrier plates



■ 专利产品，品质保障  
Patented products, quality assurance



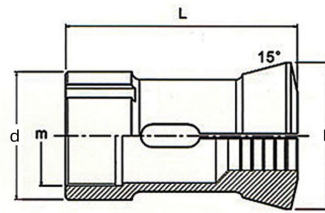
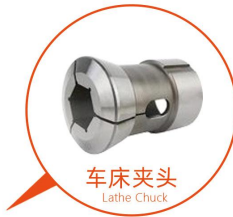
■ 两侧图纸兜，可存放资料  
There are drawing pockets on both sides



■ 两边刀套卡紧无缝隙，平整美观  
Clamping of knife sleeves on both sides

产品型号 Product name : RGT-DJ103C-A	产品尺寸 Product size: W880*D500*H1540MM						
钢板厚度：根据不同位置承重要求不同，采用 2.0MM 厚冷轧钢板。 Thickness: According to different load bearing of each position 2.0 thick steel plate is used.							
产品规格 Model Number	BT30	BT40	BT50	HSK50	HSK50	HSK63	HSK100
存储数量 (个) Capacity (number)	112	80	56	96	96	80	56

\* SK/JT/NT/DIN69871/69872 系列与 BT 系列存储通用，如有需要请选择！



**款式 1**

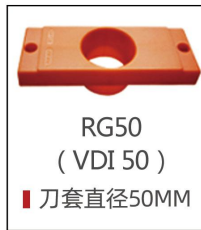
RGT-DJ103C/ 夹头款

**款式 2**

RGT-SYC/ 夹头款

**款式 3**

RGT-ZYCA2/ 夹头款

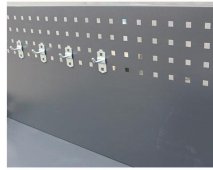


**产品参数 Product parameters**

产品型号 Product name : RGT-DJ103C	产品尺寸 Product size : W880*D660*H1540MM
产品型号 Product name : RGT-SYC	产品尺寸 Product size : W575*D490*H910+390MM
产品型号 Product name : RGT-ZYCA2	产品尺寸 Product size : W850*D500*H800MM

钢板厚度：根据不同位置承重要求不同，采用 1.8-2.0MM 厚冷轧钢板。  
Thickness : According to different load bearing of each position 1.8-2.0 thick steel plate is used.

产品型号 Product name	RG41/ VDI40	RG50/ VDI50	RG57/ VDI60	RG71
RGT-DJ103C	224	160	160	112
RGT-SYC	60	42	42	30
RGT-ZYCA2	84	60	60	42



■ 加大方孔背板，可挂工具及图纸等  
Enlarge square hole back plate



■ 单层抽屉设计，放卡尺、刀片等  
Single layer drawer design



■ 三排免安装刀套设计，可放刀柄  
There are three rows of knife sleeves below



■ 配置螺栓，四角可固定地面  
The four corners can be fixed on the ground

**工作台 Tools station** ▼

产品型号 Product name: RGT-SDTB2C	产品尺寸 Product size: W880*D555*H800+500MM					
钢板厚度: 根据不同位置承重要求不同, 采用 2.5-3.0MM 厚冷轧钢板。 Thickness: According to different load bearing of each position 2.5-3.0 thick steel plate is used.						
产品规格 Model Number	BT30	BT40	BT50	HSK50	HSK63	HSK100
存储数量 (个) Capacity (number)	39	30	21	36	30	21



■ 工作平台可加锁刀座 (需另购)  
Installing tool lock seat on the table



■ 单层抽屉设计，放工具刀片等  
Single layer drawer design



■ 两侧方孔挂板，可加装挂钩  
Square hole hanging plate on both sides



■ 双层储物工具板，承重强，空间大  
Double-layer storage tool board

**工作台 Tools station** ▼

产品型号 Product name: RGT-SDTB1C	产品尺寸 Product size: W880*D555*H800+610MM					
钢板厚度: 根据不同位置承重要求不同, 采用 2.5-3.0MM 厚冷轧钢板。 Thickness: According to different load bearing of each position 2.5-3.0 thick steel plate is used.						
产品规格 Model Number	BT30	BT40	BT50	HSK50	HSK63	HSK100
存储数量 (个) Capacity (number)	39	30	21	36	30	21

\* SK/JT/NT/DIN69871/69872 系列与 BT 系列存储通用，如有需要请选择！



**工作台 Tools station** ▾



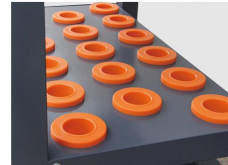
■ 上部采用一体折弯工艺，无焊接  
Integrated bending process, no welding



■ 三分隔抽屉设计，放工具刀片等  
Three compartment drawer design, put tool blades



■ 工作平台可加锁刀座（需另购）  
Installing tool lock seat on the table



■ 下方一层刀套板，放不常用刀柄  
There is a layer of knife sleeve plate below

产品型号 Product name: RGT-SDTC1C	产品尺寸 Product size: W700*D450*H800+220MM		
钢板厚度：根据不同位置承重要求不同，采用 1.8-2.0MM 厚冷轧钢板。 Thickness: According to different load bearing of each position 1.8-2.0 thick steel plate is used.			
产品规格 Model Number	BT30	BT40	BT50
存储数量 (个) Capacity (number)	31	29	24



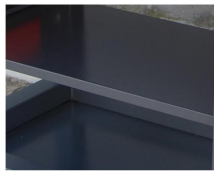
**工作台 Tools station** ▾



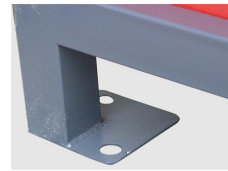
■ 三分隔抽屉设计，放工具刀片等  
Three compartment drawer design, put tool blades



■ 两侧有方孔挂板，可加装挂钩  
Square hole hanging plate on both sides



■ 下方两层工具板，放大件物品  
Double-layer storage tool board



■ 配置螺栓，四角可固定地面  
The four corners can be fixed on the ground

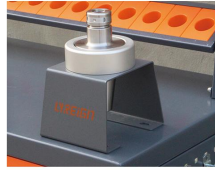
产品型号 Product name: RGT-SDTC2C	产品尺寸 Product size: W700*D450*H800+220MM		
钢板厚度：根据不同位置承重要求不同，采用 1.8-2.0MM 厚冷轧钢板。 Thickness: According to different load bearing of each position 1.8-2.0 thick steel plate is used.			
产品规格 Model Number	BT30	BT40	BT50
存储数量 (个) Capacity (number)	14	12	10

\* SK/JT/NT/DIN69871/69872 系列与 BT 系列存储通用，如有需要请选择！





**工作台 Tools station**



■ 工作平台可加锁刀座 (需另购)  
Installing tool lock seat on the table



■ 上层六排刀架, 存取方便  
Upper six rows of tool holder, easy to use



■ 两侧加装挂钩, 可挂工具  
Hooks can be installed on both sides



■ 两个独立抽屉, 可放小件物品  
Two independent drawers for small items

产品型号 Product name: RGT-SDTD1C	产品尺寸 Product size: W1280*D685*H800+610MM					
钢板厚度: 根据不同位置承重要求不同, 采用 2.5-3.0MM 厚冷轧钢板。 Thickness: According to different load bearing of each position 2.5-3.0 thick steel plate is used.						
产品规格 Model Number	BT30	BT40	BT50	HSK50	HSK63	HSK100
存储数量 (个) Capacity (number)	120	84	60	120	84	60



**L 型刀具架 Tools keeper**



■ 新型加厚原料刀套, 免安装螺丝  
ABS raw material loading free tool sleeve



■ 顶部三个分隔托盘, 分类收纳  
Three separate trays on the top, sorted storage



■ 两侧图纸兜, 可存放资料  
It can be used with hook bag

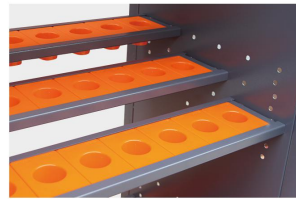


■ 侧面可加装锁刀座 (需另购)  
Tool lock seat can be installed on the side

产品型号 Product name: RGT-DJ104C	产品尺寸 Product size: W865*D495*H1015MM						
钢板厚度: 根据不同位置承重要求不同, 采用 2.0MM 厚冷轧钢板。 Thickness: According to different load bearing of each position 2.0 thick steel plate is used.							
产品规格 Model Number	BT30	BT40	BT50	HSK40	HSK50	HSK63	HSK100
存储数量 (个) Capacity (number)	70	50	35	60	60	50	35

\* SK/JT/NT/DIN69871/69872 系列与 BT 系列存储通用, 如有需要请选择!

**刀柄存储柜 / 工具柜**   
**Tools keeprt**



刀套板可调节高度和层数，方便取用  
Adjustable height of knife sleeve plate



侧面加装图纸兜，方便存放图纸！  
Add a drawing pocket for easy storage!



铝合金把手，带锁柜门，安全保管  
Aluminum alloy handle with locking door



■ A 款 有前门有后档    ■ B 款 无前门有后档    ■ C 款 无前门无后档    ■ D 款 前后双门    ■ E 款 无前门无后档无侧板    ■ F 款 工具柜

**产品参数 Product parameters**

产品型号 Product name : RGT-DJGX04A/B/C/D/E	产品尺寸 Product size : W850*D550*H1830MM					
钢板厚度：根据不同位置承重要求不同，采用 1.0-1.2MM 厚冷轧钢板。 Thickness : According to different load bearing of each position 1.8-2.0 thick steel plate is used.						
产品规格 Model Number	BT30	BT40	BT50	HSK50	HSK63	HSK100
存储数量 (个) Capacity (number)	168	120	84	144	120	84

\* SK/JT/NT/DIN69871/69872 系列与 BT 系列存储通用，如有需要请选择！



**刀具车 Tools cart**



平台配置加厚原料刀套  
Thickened raw material knife sleeve



侧面配置可拆卸的插槽托盘  
Removable slot tray on side



下面配置两条外倾式刀柄架  
There are two extroverted toolholders



聚氨酯万向脚轮，推动更平稳  
Polyurethane castor for smooth driving

产品型号 Product name:	RGT-JYCEC							产品尺寸 Product size:	W575*D470*H810+400MM						
钢板厚度：根据不同位置承重要求不同，采用 1.0-1.5MM 厚冷轧钢板。 Thickness: According to different load bearing of each position 1.0-1.5 thick steel plate is used.															
产品规格 Model Number	BT30	BT40	BT50	HSK40	HSK50	HSK63	HSK100	产品规格 Model Number	BT30	BT40	BT50	HSK40	HSK50	HSK63	HSK100
存储数量 (个) Capacity (number)	36	30	25	36	36	30	19	存储数量 (个) Capacity (number)	36	30	25	36	36	30	19



**刀具车 Tools cart**



加大方孔背板，可挂工具扳手等  
Enlarge square hole back plate



下面配置一层平板，可放工具等  
A layer of light board is configured below



侧面有图纸兜，可存放资料  
There is a file pocket on the side



加宽加大把手，推拉更省力  
Widen the handle

产品型号 Product name:	RGT-JYFC							产品尺寸 Product size:	W575*D470*H810+400MM						
钢板厚度：根据不同位置承重要求不同，采用 1.0-1.5MM 厚冷轧钢板。 Thickness: According to different load bearing of each position 1.0-1.5 thick steel plate is used.															
产品规格 Model Number	BT30	BT40	BT50	HSK40	HSK50	HSK63	HSK100	产品规格 Model Number	BT30	BT40	BT50	HSK40	HSK50	HSK63	HSK100
存储数量 (个) Capacity (number)	24	20	15	24	24	20	11	存储数量 (个) Capacity (number)	24	20	15	24	24	20	11

\* SK/JT/NT/DIN69871/69872 系列与 BT 系列存储通用，如有需要请选择！



**工具车 Tools partner**

**产品参数 Product parameters**

产品型号 Product name:	RGW-G06 (双抽) /RGW-G05 (单抽)
产品尺寸 Product size:	W720*D420*H980+390MM
钢板厚度: 根据承重要求不同, 采用 1.0-1.5MM 厚冷轧钢板。 Thickness: According to different load bearing of each position 1.0-1.5 thick steel plate is used.	



**工具车 Tools partner**

**产品参数 Product parameters**

产品型号 Product name:	RGW-G08ZG (三抽) /RGW-G07ZG (双抽)
产品尺寸 Product size:	W573*D470*H920+390MM
钢板厚度: 根据承重要求不同, 采用 1.0-1.5MM 厚冷轧钢板。 Thickness: According to different load bearing of each position 1.0-1.5 thick steel plate is used.	

**L 型**



**L型 (侧固式) 锁刀座**  
L-type (side fixed) tool holder

产品型号: BT30、BT40、BT50、  
HSK32、HSK40、HSK50、  
HSK63、HSK80、HSK100

**U 型**



**U型 (台面式) 锁刀座**  
U-type (table type) tool holder

产品型号: BT30、BT40、  
BT50、HSK50、HSK63、  
HSK80、HSK100

**C 型**



**C型 (台面式) 锁刀座**  
C-type (table type) tool holder

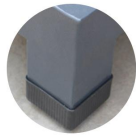
产品型号: BT30、BT40、BT50、  
HSK63、BT40-BT30、  
BT40-HSK63A、BT40-BT50

\* SK/JT/NT/DIN69871/69872 系列与 BT 系列存储通用, 如有需要请选择!

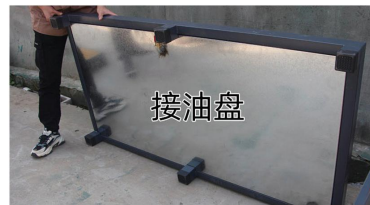


**车间接油盘** 

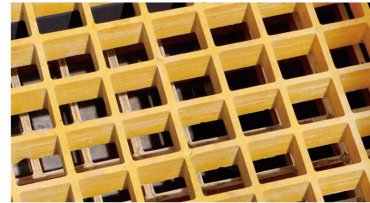
Machine tool accessories Tools cart



**固定高度**  
Fixed height



**车间接油盘，防滑耐磨。底部镀锌钢板方便存储油污。**  
The oil pan used in the workshop is anti-skid and wear-resistant. The oil pan used in the workshop is anti-skid and wear-resistant.



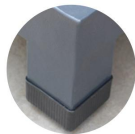
**玻璃钢网格，强度高，排污效果好，无需清洗。**  
FRP grid, high strength, good sewage discharge effect, no cleaning.

产品型号 Product name: CW-1680/1260-O1	产品高度 Height : 150MM 固定高 (Fixed height)
产品特点: 车间接油盘, 防滑耐磨, 方便存储油污, 保持车间环境清洁。 Thickness: The oil receiving plate is convenient for storing oil stains and keeping the workshop environment clean.	
产品尺寸 Product size: W1640*D840*H150MM	W1260*D640*H150MM

**机床脚踏板 - 固定高** 

Machine tool accessories Tools cart

产品型号 Product name:  
CW-1680-B  
CW-1260-B



**固定高度**  
Fixed height



**机床脚踏板 - 可调节脚** 

Machine tool accessories Tools cart

产品型号 Product name:  
CW-1680-A  
CW-1260-A



**可调节高度**  
Adjustable height



产品规格 / Product size:		产品规格 / Product size:	
W1640*D840*H150MM	W1260*D640*H150MM	W1640*D840*H130-180MM	W1260*D640*H130-180MM

\* SK/JT/NT/DIN69871/69872 系列与 BT 系列存储通用，如有需要请选择！



# 刀具车/工具柜

REIGN BRAND TOOL CAR, TOOLS CABINET

## 01. 刀具车

Tools partner

产品型号 / Product name:  
RGT-J03L

产品规格 / Product size:  
W720\*D420\*H980+220MM

可装刀柄 / Number of toolholders:

BT30: 31个 / BT40: 31个  
BT50: 24个 / HSK50: 31个  
HSK63: 31个 / HSK100: 15个



## 02. 刀具车

Tools partner

产品型号 / Product name:  
RGT-J02L

产品规格 / Product size:  
W720\*D420\*H980+220MM

可装刀柄 / Number of toolholders:

BT30: 31个 / BT40: 31个  
BT50: 24个 / HSK50: 31个  
HSK63: 31个 / HSK100: 15个



## 03. 刀具车

Tools cart

产品型号 / Product name:  
RGT-J2C

产品规格 / Product size:  
W830\*D440\*H800MM

可装刀柄 / Number of toolholders:

BT30: 27个 / BT40: 21个  
BT50: 15个 / HSK50: 24个  
HSK63: 18个 / HSK100: 12个



## 04. 刀具车

Tools cart

产品型号 / Product name:  
RGT-JXC

产品规格 / Product size:  
W830\*D440\*H800MM

可装刀柄 / Number of toolholders:

BT30: 45个 / BT40: 35个  
BT50: 25个 / HSK50: 40个  
HSK63: 35个 / HSK100: 25个



## 05. A型刀具架

Tools keeper

产品型号 / Product name:  
RGT-DJ101

产品规格 / Product size:  
W860\*D650\*H1630MM

可装刀柄 / Number of toolholders:

BT30: 196个 / BT40: 140个  
BT50: 98个 / HSK50: 168个  
HSK63: 140个 / HSK100: 98个



## 06. L型刀具架

Tools keeper

产品型号 / Product name:  
RGT-DJ101

产品规格 / Product size:  
W860\*D500\*H1630MM

可装刀柄 / Number of toolholders:

BT30: 98个 / BT40: 70个  
BT50: 49个 / HSK50: 84个  
HSK63: 70个 / HSK100: 49个



## 07. 双抽工具柜

Tools Partner

产品型号 / Product name:  
RGT-J03L

产品规格 / Product size:  
W720\*D420\*H980+400MM

产品特点 / Product features

双层抽屉设计, 上层抽屉带分隔。  
Double drawer, upper drawer with partition.



## 08. 单抽工具柜

Tools Partner

产品型号 / Product name:  
RGT-J02L

产品规格 / Product size:  
W720\*D420\*H980+400MM

产品特点 / Product features

单层抽屉, 抽屉内部带分隔。  
Single layer drawer with partition inside.



## 09. 单门刀具柜

Tools keeper

产品型号 / Product name:  
RGT-DJGX05

产品规格 / Product size:  
W620\*D460\*H1800MM

可装刀柄 / Number of toolholders:

BT30: 108个 / BT40: 84个  
BT50: 60个 / HSK50: 96个  
HSK63: 84个 / HSK100: 60个



## 10. 双开门刀具柜

Tools keeper

产品型号 / Product name:  
RGT-DJGX03

产品规格 / Product size:  
W820\*D460\*H1800MM

可装刀柄 / Number of toolholders:

BT30: 168个 / BT40: 120个  
BT50: 84个 / HSK50: 144个  
HSK63: 120个 / HSK100: 84个



## 11. 储物刀具柜

Tools keeper

产品型号 / Product name:  
RGT-DJGX02

产品规格 / Product size:  
W1000\*D460\*H1800MM

可装刀柄 / Number of toolholders:

BT30: 120个 / BT40: 84个  
BT50: 60个 / HSK50: 96个  
HSK63: 84个 / HSK100: 60个



## 12. 双开门工具柜

Tools keeper

产品型号 / Product name:  
RGT-DJGX03

产品规格 / Product size:  
W820\*D460\*H1800MM

产品特点 / Product features

柜子内部4层层板, 存储方便。  
4 layers of boards inside the cabinet.



\* SK/JT/NT/DIN69871/69872 系列与 BT 系列存储通用, 如有需要请选择!



## 瑞格智能科技

LYREIGN INTELLIGENT TECHNOLOGY

### 特别声明

本资料所有内容均经过认真核对，如有任何印刷错漏或内容上的误解，本公司保留最终解释权。  
另：产品若有技术改进，会编进新版样册中，恕不另行通知。产品外观、颜色如有改动，以实物为准。