

THE FACTORY PROFILE – 公司简介



VIETNAM HECHENG ENTERPRISE CO.,LTD

越南和成企业有限公司

TABLE OF CONTENTS 目录

- I. COMPANY PROFILE 公司简介
- II. ORGANIZATION CHART 组织结构图
- III. SCALE PRODUCTION 生产规模
- IV. EQUIPMENT LIST 设备名称统计表
- IV. THE COMPANY'S PRODUCTS 公司产品
- IIV. FACTORY VIEWS 工厂景观



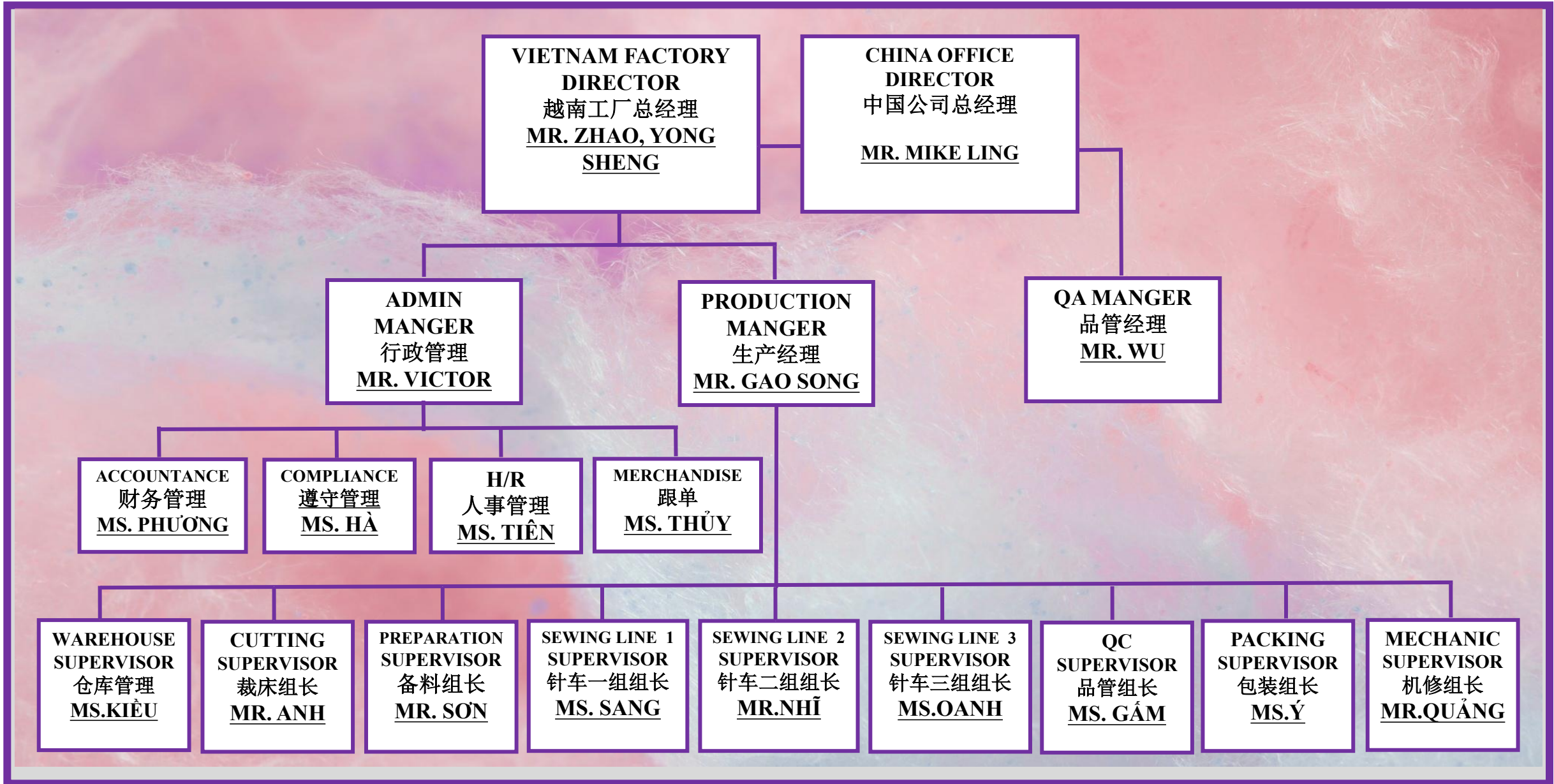


COMPANY PROFILE 公司简介

1	COMPANY NAME 公司名称	CÔNG TY TNHH HECHENG ENTERPRISE VIỆT NAM VIETNAM HECHENG ENTERPRISE COMPANY LIMITED 越南和成企业有限公司
2	ADDRESS 地址	THE 2ND BUILDING, LOT T5A-T6, STREET NO 12, HAI SON EXPANDED INDUSTRIAL PARK (PHASE 3+4), DUC HOA HA COMMUNE, DUC HOA DISTRICT, LONG AN PROVINCE, VIET NAM
3	COMPANY LEGAL REPRESENTATIVE 公司法人	MR. ZHAO, YONG SHENG - HP +84 938614309 MR. MIKE LING - ling@hcbags.com
4	TAX CODE 税码	1102037836
5	TEL 电话	84 272 3765586
6	ESTABLISHMENT YEAR 公司建立	2023
7	POST CODE 邮局编号	853950
8	WAGE ZONE 薪资地区	ZONE 2 第二区



ORGANIZATION CHART 组织结构图





SCALE PRODUCTION 生产规模

1	NUMBER OF EMPLOYEES 员工总数	120 人
2	PRODUCTION SCALE 生产规模	3 PRODUCTION LINES 3 条生产流水线
3	MAIN PRODUCTS 主要产品	BAGS, PACK BAG, HAND BAG 包袋, 背包, 手袋
4	PRODUCTION LEAD TIME 生产提前期	4->5 WEEKS 4 至 5 周
5	CAPACITY 产能	500,000 PCS / MONTH 50万个产品/月
6	MAJOR MARKET 主要市场	100% US 100% 走美线
7	PRODUCT BRAND 商品	DRI-DUCK, K9 SPORT, GATOR CASES, BILT, NAUTICA



EQUIPMENT LIST 设备名称统计表

NO 次序	EQUIPMENT NAME 设备名称	QTY 数量	
1	Twin Needle Machine	双针车	4
2	Single Needle Machine	单针车	5
3	DY Machine	DY 车	50
4	Cylinder machine	高车	12
5	Button Machine	钉钮机	1
6	Bartack	打枣机	1
7	Peeling Machine	削边机	1
8	Computer Automatic Setting Machine 60X40CM	电脑车 60X40CM	9
9	Hydraulic punch machine 60 tons	液压冲床 60 吨	1
10	Hydraulic punch machine 80 tons	液压冲床 80 吨	1
11	Cutting table 8 metters length	裁床	2
Total 合计			87



THE COMPANY'S PRODUCTS 公司产品



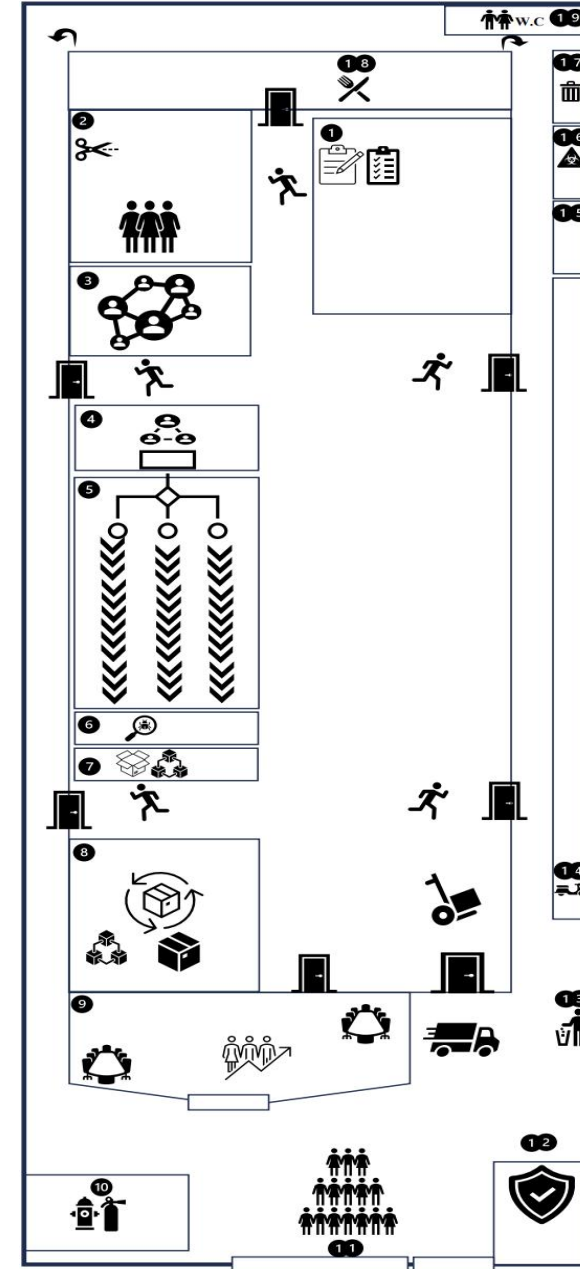


FACTORY VIEWS 工厂景观



Main gate

Factory Main Gate & Map 公司大门口 & 设置图



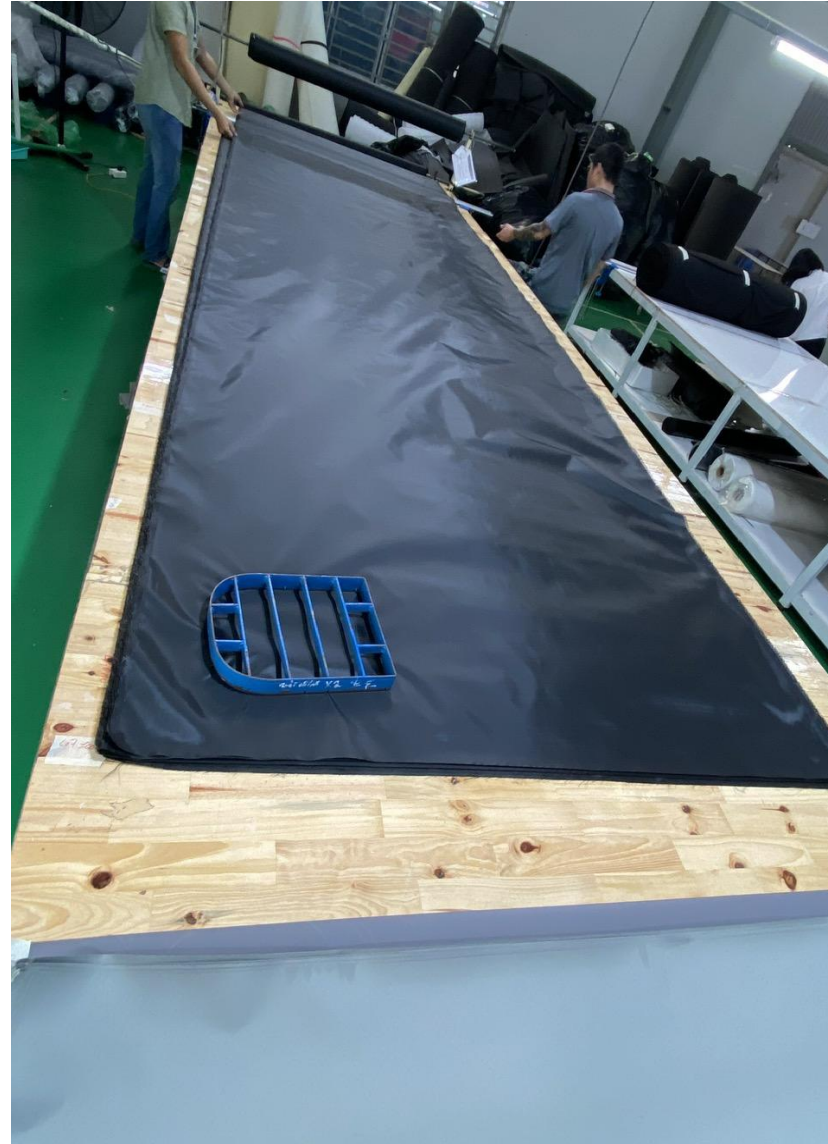
- 1: Kho Nguyên phụ liệu
Material warehouses
物料仓库
- 2: Tổ cắt
Cutting
裁剪
- 3: Khẩu chuẩn bị
Input Preparation
备料组
- 4: Tổ máy may lập trình
Automatic-Sewing
电脑车组
- 5: Chuyên may
Sewing Line
针车组
- 6: Kiểm phẩm
Endline Inspection
品控
- 7: Đóng gói
Packing
包装
- 8: Kho thành phẩm
Finishing Warehouse
成品仓库
- 9: Khu văn phòng
Admin Office
行政办公区
- 10: Trụ bơm PCCC
Fire Fighting Water Pump System
消防水泵系统
- 11: Cổng chính
Main gate
大门口
- 12: Phòng bảo vệ
Security Station
保卫室
- 13: Thùng rác sinh hoạt
Household Waste Area
垃圾存放区
- 14: Nhà xe
Bike Parking
车库
- 15: Phòng bảo trì
Mechanist Room
保养零件存放区
- 16: Kho rác thải nguy hại
Hazardous waste warehouse
危害垃圾存放区
- 17: Kho rác thải sản xuất
Production waste warehouse
生产垃圾存放区
- 18: Canteen
饭堂
- 19: Nhà vệ sinh
Washroom
洗手间



FACTORY VIEWS 工厂景观

Raw Material & Accessories Warehouse 物料仓库







FACTORY VIEWS 工厂景观

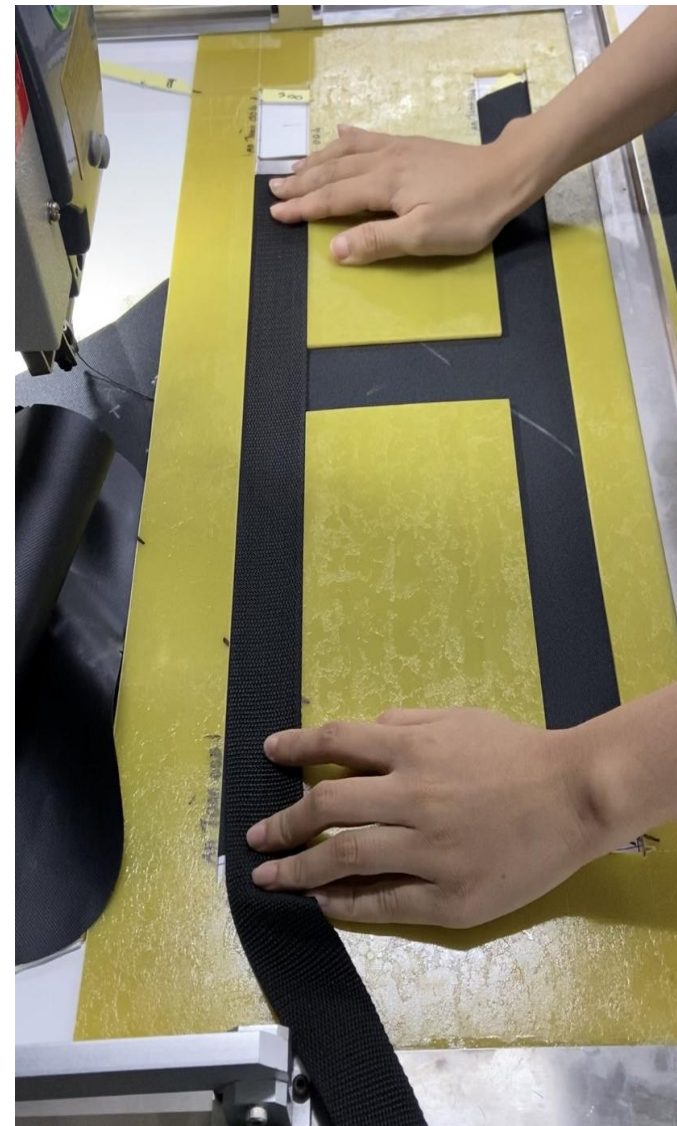
Input Preparation Department 备料组





FACTORY VIEWS 工厂景观

Computer Automatic Setting Sewing 电脑车组





FACTORY VIEWS 工厂景观

Production Sewing Floor 生产针车组





FACTORY VIEWS 工厂景观

Production Sewing Floor 生产针车组





FACTORY VIEWS 工厂景观

Quality Control Station 品管





FACTORY VIEWS 工厂景观

Packing Department 包装组





FACTORY VIEWS 工厂景观

Finshing Product Warehouse 成品仓





FACTORY VIEWS 工厂景观

Shipping Cargoes 成品装柜

