

# LEADER OF PRESCHOOL EDUCATION EQUIPMENT

Pure solid wood & Green space



Escort children to grow up happily



# CONTENT

## Kindergarten product series

- 01 Classroom layout
- 09 Reading area
- 11 Art District
- 13 puzzle area
- 15 Science Zone
- 17 build area
- 19 Doll's house
- 21 reading room products
- 22 tent / carpet
- 23 Sleeping area bed/disinfection cabinet
- 24 Music cabinet/sofa

## BRAND INTRODUCTION

### Jiansheng Group, a leader in mid- to high-end preschool education equipment

As an enterprise that pursues original design leadership, Jiansheng Group uses its unique innovation model to keep its feet on the ground and forge ahead. It has become a collection of product research and development, design, manufacturing, high-end personalized customization, space design and overall life planning of kindergartens. An integrated preschool education equipment provider and service provider. It extracts advanced Western preschool education concepts and high-end life elements, integrated into the profound cultural heritage of the East, introducing a new design trend to China's preschool education equipment industry. With strict standards, excellent materials, high-end design, excellent production, and high standards of green environmental protection, we protect children grow up healthily, so that every product conveys a rich noble temperament, so that more children can enjoy unique, Exquisite, green and natural garden life.

With a global perspective, a scientific attitude, the craftsmanship of excellence and continuous innovation, Jiansheng Group ability, adhere to the path of the world's high-quality enterprises, follow the nature of children, ensure safety, and put quality first, and its professional production Children's outdoor development equipment, professional kindergarten furniture, etc., the product quality has been certified by authoritative institutions at home and abroad, and has passed It has passed various environmental protection system certifications at home and abroad, and its products are distributed all over the country and exported to more than 60 countries and regions around the world.

# KINDERGARTEN FURNITURE SERIES

...



100%  
Green

100%  
Pure solid wood

100%  
Original design

“玩中学,学中玩”



Create a better growth environment for children

Each product series is designed through careful planning and layout. design to provide diverse and practical spaces for the garden Planning inspiration and solutions to provide great A learning space with sensory experience and cultural connotation.



...







## LOOKING FOR PLACES CLOSE TO WOOD

Wood is the product of the exchange between heaven and earth.



## NEIGHBORS WITH WOOD FRIENDS WITH WOOD

**Strive to have close contact with nature,  
Create a low-carbon, environmentally  
friendly and natural growth environment  
for the park.**

---





## Classroom layout

### Full coverage of three major activity types

- Class life activity area
- regional activities
- group activities

## Toddler study tables and chairs

### Provides core educational equipment for classroom environment settings

The four-leaf clover children's study table provides three different shapes and sizes: round, square, and rectangular. It can be applied to any classroom to meet the needs of children's learning, learning and gaming needs.

100% natural and environmentally friendly pure solid wood is used as raw material. The pure solid wood desktop and table legs make the study table more sturdy and durable. The unique painted decorative surface makes the table more durable. The surface of the chair is easy to clean, and the design with four-leaf clover and castle elements creates a lively and culturally connotative learning atmosphere for young children.



round table

Small class:  $\varnothing \times 48$  cm  
Middle class:  $\varnothing 80 \times 52$  cm  
Big class:  $\varnothing 80 \times 56$  cm



square table

Small class: L60  $\times$  W60  $\times$  H48 cm  
Middle class: L60  $\times$  W60  $\times$  H52 cm  
Big class: L60  $\times$  W60  $\times$  H56 cm

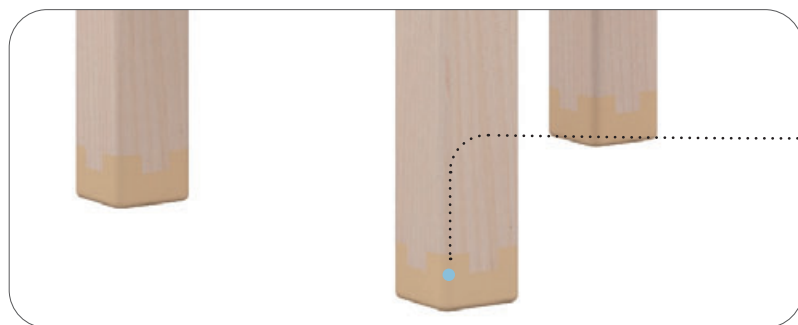


long table

Small class: L120  $\times$  W60  $\times$  48 cm  
Middle class: L120  $\times$  W60  $\times$  52 cm  
Big class: L120  $\times$  W60  $\times$  56 cm



The four-leaf clover element represents the health of young children. Grow up healthily, happily and joyfully.



Castle in the fairy tale town of Boppard, Germany elements to add educational culture to the product Steady and solid.

## Extremely detailed design Ingenuity

Jiansheng Group focuses on taking the lead in original design, and every product has the designer's unique thoughts. Transform into diverse spiritualities. Simple and stylish design techniques and unique wood craftsmanship The iconic fairy tale elements, milled lines and patterns make the product richer in content.

Toddler learning chair, made of pure solid wood, with added support on the side legs. Make the chair more stable and safer.

Reinforced side leg supports



Seat height

Small class: 26 cm  
Middle class: 28 cm  
Senior class: 30 cm



## Classroom layout

The natural and simple Nordic life is represented by the five countries of "Norway, Finland, Denmark, Sweden and Iceland". Lillard class classroom furniture and overall space layout, Integrating the customs and cultural characteristics of the five Nordic countries: the four continents around the classroom represent the four blue ice fields of "Norway, Finland, Denmark, and Sweden" respectively. The classroom is empty. The floating white ice field design in the room represents Iceland, the "Land of Ice and Fire". It enriches children's knowledge by creating interesting story scenes of the five Nordic countries. Broaden children's horizons.

## Diverse functional area corner settings

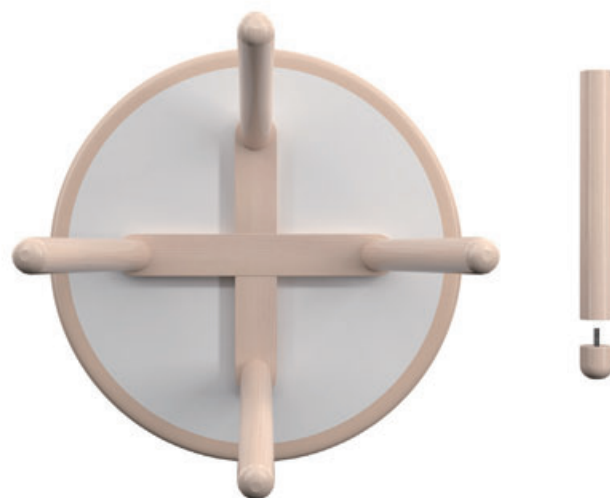
- 1、Reading Area
- 2、Science Area
- 3、Art Area
- 4、Playing Area
- 5、Construction Area
- 6、Puzzle Area





## Classic conical angled foot design

Nordic classic conical sloping feet are used throughout the Lerad series, which is simple and stable, making it more stable and safe.



## Double insurance reinforcement design

The Lirad series was designed from the beginning to ensure product quality. The quality is excellent, and double guarantees are used in many places in the manufacturing of furniture. Risk-reinforced design to prevent deformation and cracking.

The height of the table legs can be adjusted more freely

## 4 table types to choose from

Easily match diverse classroom spaces



Classic round table with sloping legs



Straight leg round table



Small square table



Long table

## Ant chair

This toddler learning chair is based on the Danish national chair "Ant Chair". Designed, available in dark and light colors. Dark silence Comfortable, cool and comfortable, makes life interesting; light color, The light texture is clean and refreshing, the surface is shiny and elegant Charming, simple life free from all unnecessary things. Pure solid wood Toddler learning chair, equipped with ergonomics that fit the child The curved high backrest, the rounded and smooth chamfering, the comfortable and comfortable Total comfort.





# Reading Area

Chinese people have had a deep affection for "wood" since ancient times, with souls The solid wood also gives life to solid wood preschool furniture. 5,000 years ago, the most primitive and simple wooden furniture was related to human beings and cherished it. Being close to nature is an everlasting theme that warms people's hearts. The interesting and natural corner door shape is combined with soft colors to create a childlike atmosphere. The interesting reading atmosphere seems to take children to nature, suitable for a variety of reading form, enriching the reading experience, allowing children to wander in the ocean of knowledge and open up The door of wisdom.



## Vertical bookcase

Adding storage space to the limited reading area corner allows multiple children to choose their favorite books at the same time.

- The triangular three-dimensional design, small at the top and large at the bottom, makes the bookcase structure moe stable and safer.
- The four-layer stratified design facilitates the classification and organization of books and cultivates children's awareness of classification.



## Spectrum teaching mat

Help children understand basic circles and shape divisions, and learn Learn the color discrimination and correspondence of gradients, and learn the science of spectrum Knowledge, stimulate children's imagination of abstract knowledge.



## Various toy cabinet types



Pure solid wood backboard cabinet



Transparent multi-compartment cabinet



Transparent open cabinet



Right angle corner cabinet



Sector curved cabinet



corner cabinet



High cabinets and low cabinets



## Art District



Long table with straight legs



Chania toddler learning chair

## Multifunctional toy cabinet



- **Safety rounded corners**  
Storage box with rounded corners, safer
- **Storage tank anti-slip design**  
Intimate anti-slip design, the storage box will not suddenly slide out
- **Refined with environmentally friendly materials**  
Made of high-quality environmentally friendly PP particles, no formaldehyde, no odor, healthy and environmentally friendly
- **Drawer-type stretch design**  
Specially designed for children aged 3-6 years old, drawer-type stretching and exercise  
Making it easier to pick up and place materials



Twelve compartment storage cabinet



90 ° inner corner cabinet



Art Materials Cabinet (Activity)

## Double-sided drawing board cabinet

In a corner environment, the double-sided picture board cabinet is used in conjunction with the picture board wall and can be flexibly placed in the corner or any space in the corner. The straight drawing board on the upper level allows children to focus on creating. The activity storage box on the lower level makes it easy for children to store painting materials.





## Puzzle Area



### Randomly combined functional design

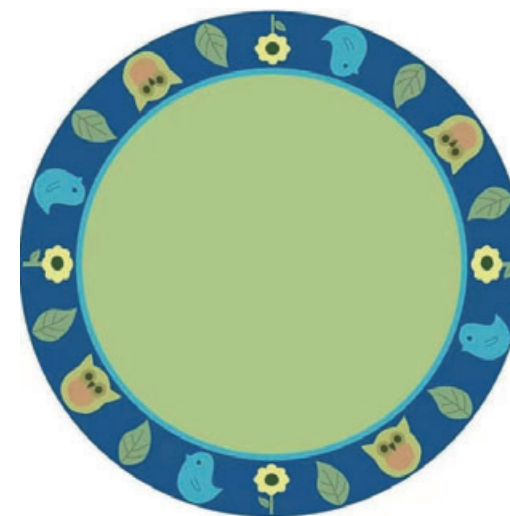
Diverse storage cabinets can be freely combined and flexibly matched with different products, making the space versatile.



Hollow five-compartment storage cabinet (transverse partition)



Nine-compartment storage cabinet



### Ground construction

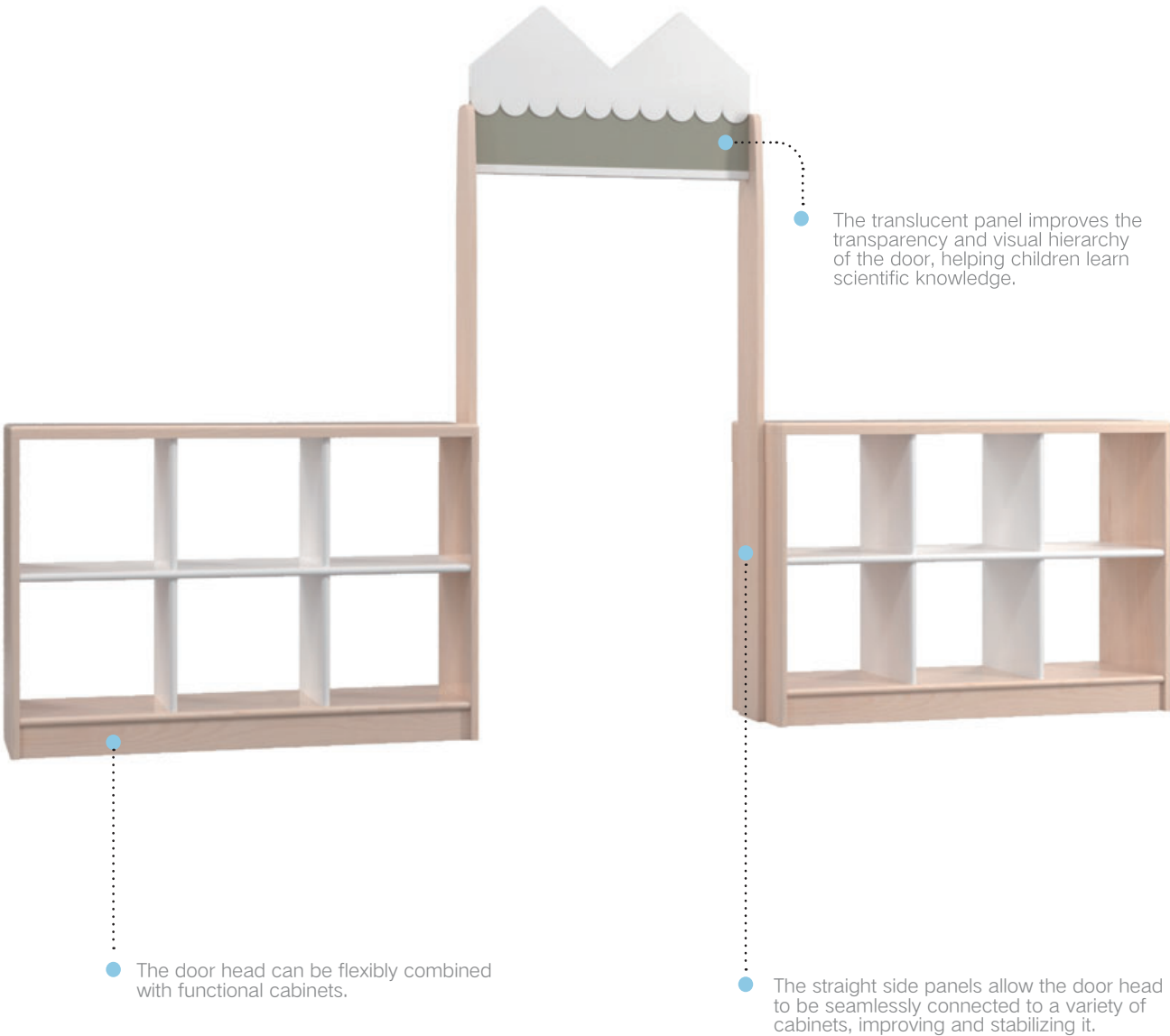
Make full use of the ground space to meet the space requirements for large-scale construction and combined construction in terms of functionality and aesthetics. Customized construction teaching carpets with rich and cute animal patterns can help children learn about a variety of animals.



# Science Zone

## Bingshan Jiaomen

The two-color design and the translucent material design of the door head take into account the strong curiosity in childhood. By providing an interesting observation environment, children can explore independently, raise questions and guide meaningful learning from the perspectives of color, perspective, light, etc.



## Multifunctional toy cabinet

There are many materials in the science area, and the Duobao cabinet with large storage space can keep this area organized. The two-color design of the panel and cabinet, the layered changes in circular and semicircular handles, and the gradual changes in drawer size allow children to understand shapes, colors, and order during use.





## Build Area



### Colorful wooden house storage cabinet

The Norwegian-style colorful wooden house-shaped storage cabinets create an interesting and distinctive learning space for the kindergarten. The multi-functional floor cabinets provide a spacious space for the classroom, which can meet the requirements of stacking, inserting, arranging, combining and constructing materials. More Collect and organize needs to help children actively carry out various cognitive constructions and gain perceptual experience and psychological satisfaction.



The simple solid wood high-leg design increases the transparency of the space and makes it tall and slender.

### Sparkling area corner door

The door is shaped like a colorful house among the Norwegian fjords, shining in the reflection of the waves on the sea. The straight lines of the side panels allow the door head and various cabinets to be easily connected seamlessly, and the milling process presents the beauty of details.



Milling process, careful polishing, details witness the ingenuity



The straight-line design of the door pillar side panels can be perfectly combined with the size of the cabinet, and can be installed seamlessly and can be easily combined and matched to create a variety of teaching scenes.





## Doll's House



## White Swan Toddler Integral High Cabinet

The white swan in Andersen's fairy tale comes among the children, creating a very attractive, durable and safe life experience area for the children within the limited physical space of the classroom. The height of the overall cabinet is designed according to the height characteristics of children, making it convenient for children to play around the kitchen and cook their favorite foods.



Straight leg round table

Material: White maple pure solid wood  
Specification: 800\*800\*550mm



Ant chair (white)

Material: White maple pure solid wood  
Grid Specification: 308\*478\*562mm



Double-layer curved storage cabinet

Material: Pure solid wood  
Specification: 700\*364\*625mm



90 ° inner corner cabinet

Material: pure solid wood  
Specification: 600\*600\*625mm



Hollow double layer storage cabinet

Material: White maple pure solid wood  
Specification: 898\*298\*625mm



Alto single sofa

Material: White maple pure solid wood/cotton and linen  
Specification: 451\*593\*492mm



Reading Room Products



Reading Rubik's Cube  
Material: 15cm maple grain birch multi-layer board  
Specifications: L60xW60xH60cm



Little turtle bookcase  
Material: rubber wood  
Specifications: L60x W60xH60cm



Animal farm bookcase  
Material: rubber wood  
Specifications: L60 × W60 × H60 cm



Reading Sofa Seat Cabinet  
Material: rubber wood  
Specifications: L90 × W48 × H60 cm



Attica reading sofa cabinet  
Material: rubber wood  
Specifications: L200 × W80 × H150 cm



Circular reading sofa cabinet  
Material: rubber wood  
Specifications: Seat height: L180\*W180\*H28 cm  
Total height: L180\*W180\*H120 cm



Solid wood system bookcase  
Material: rubber wood  
Specifications: L90 × W30 × H84 cm



Wicked Bear Bookcase  
Material: rubber wood  
Specifications: L60 × W30 × H65 cm



Weikedi deer bookcase  
Material: rubber wood  
Specifications: L60 × W30 × H65 cm

Tent

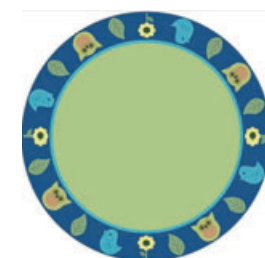


Paros tent  
Material: wood/fabric  
Specifications: L100 × W100 × H160 cm (excluding accessories)



Felkas tent  
Material: PVC pipe/fabric  
Specifications: L130 × W130 × H145 cm (excluding accessories)

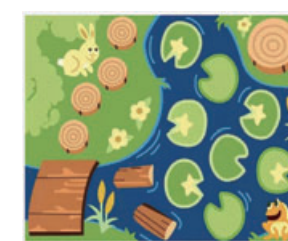
Carpet



Animal round rug  
Material: 1100g nylon, hemmed and bottomed  
Specifications: φ 200 cm



Animal square rug  
Material: 1100g nylon, hemmed and bottomed  
Specifications: L220 × W180 cm



Forest carpet  
Material: 1100g nylon, hemmed and bottomed  
Specifications: L220 × W180 cm



Teaching digital carpet  
Material: 1100g nylon, hemmed and bottomed  
Specifications: L220 × W180 cm



Teaching Leaf Rug  
Material: 1100g nylon, hemmed and bottomed  
Specifications: L220 × W180 cm



## TentSleeping Area Bed



Children's sliding bed

Material: rubber wood pure solid wood  
Specifications: L153 × W65 × H106 cm  
L146 × W65 × H89 cm  
L139 × W65 × H72 cm  
L132 × W65 × H55 cm  
L125 × W65 × H38 cm



Solid wood toddler bed

Material: rubber wood pure solid wood  
Specifications: L135.6 × W65.6 × H17 cm



Solid wood bunk bed

Material: rubber wood pure solid wood  
Specifications: L135.6 × W65.6 × H17 cm

## Disinfection Cabinet



Double layer sterilized tea cup cabinet

Material: Thickened 201 stainless steel non-magnetic box, tempered glass door, marble countertop  
Specifications: 720\*310\*1220mm



Towel disinfection cabinet

Material: All stainless steel, non-magnetic  
Specifications: 520\*390\*1620mm



Comprehensive disinfection cabinet

Material: Thickened 201 stainless steel non-magnetic box, tempered glass door, marble countertop  
Specifications: 1090\*310\*1220mm

## Music Cabinet



Music cabinet

Material: High-density MDF water-based paint  
Specifications: L80\*W30\*H62 cm



Music high cabinet

Material: High-density MDF water-based paint  
Specifications: L105\*W30\*H90 cm



Saas style music cabinet

Material: rubber wood  
Specifications: L80\*W60\*H72 cm

## Sofa



Snake upholstered sofa (orange)

Material: high density sponge  
Specifications: L50 × W50 × H16 cm  
8 pieces/set



Snake upholstered sofa (blue)

Material: high density sponge  
Specifications: L50 × W50 × H16 cm  
8 pieces/set



Leisure round stool (2 pieces/group)

Material: solid wood frame + environmentally friendly cloth + high-density sponge  
Specifications: φ41 × H28.5 cm



Single pull button sofa

Material: solid wood frame + environmentally friendly cloth + high-density sponge  
Specifications: L46 × W45 × H50.5 cm



Blue single pull button sofa

Material: solid wood frame + environmentally friendly cloth + high-density sponge  
Specifications: L46 × W45 × H50.5 cm



Gray double pull button sofa

Material: solid wood frame + environmentally friendly cloth + high-density sponge  
Specifications: L76 × W51 × H53.5 cm