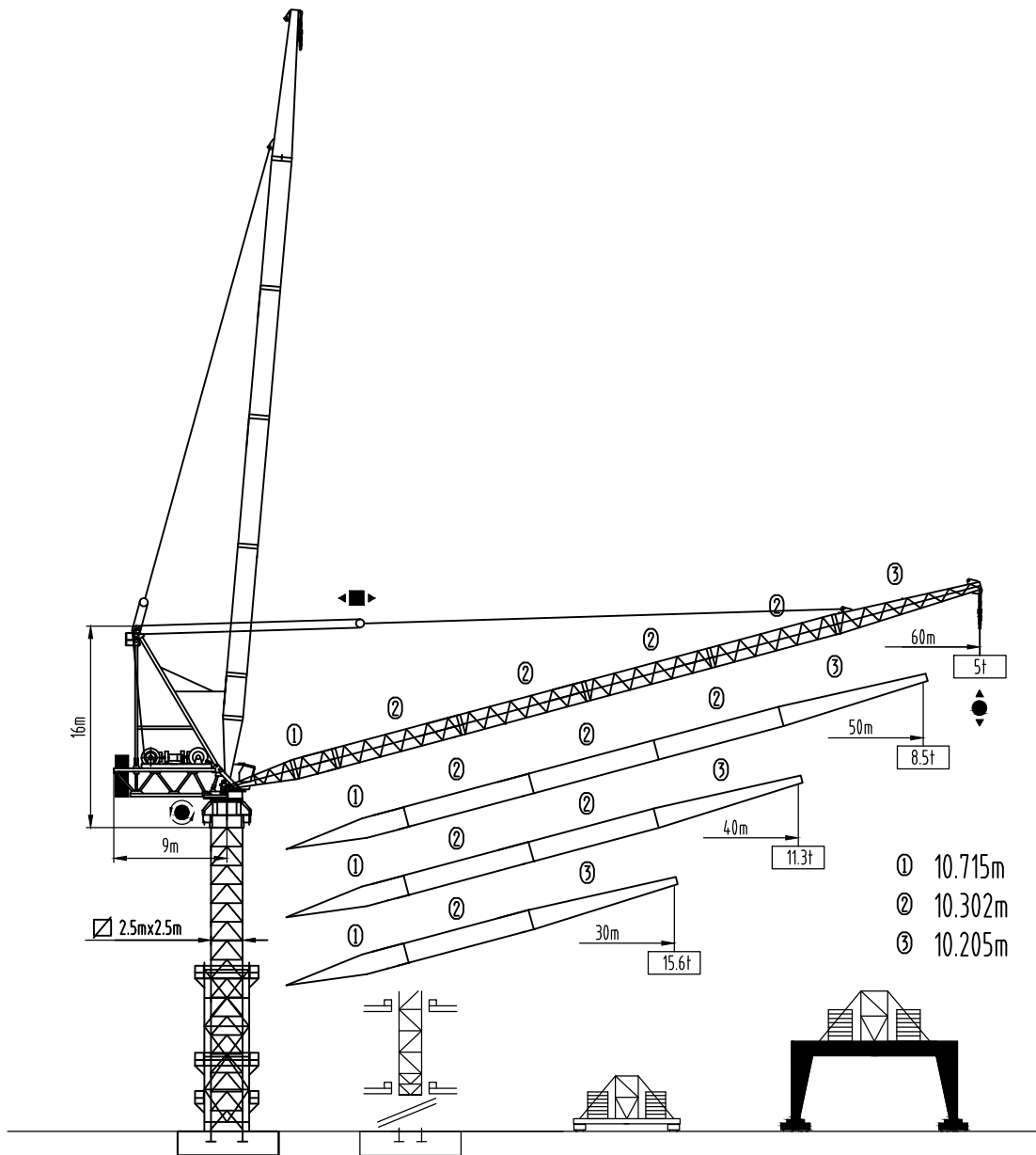




沈阳三洋建筑机械有限公司
SHENYANG SANYO BUILDING MACHINERY CO., LTD

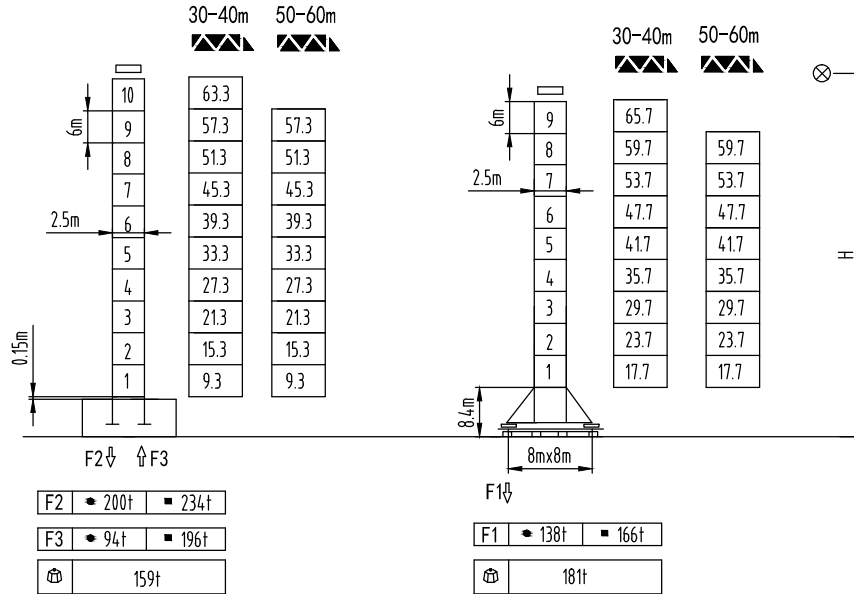
Max Load: 24Ton
Jib: 60M
Tip Load: 5Ton
Free Standing: 63.3M

TOWER CRANE QTD 400t · m
(S480LH24)





塔身截面 Mast 2.5m x 2.5m

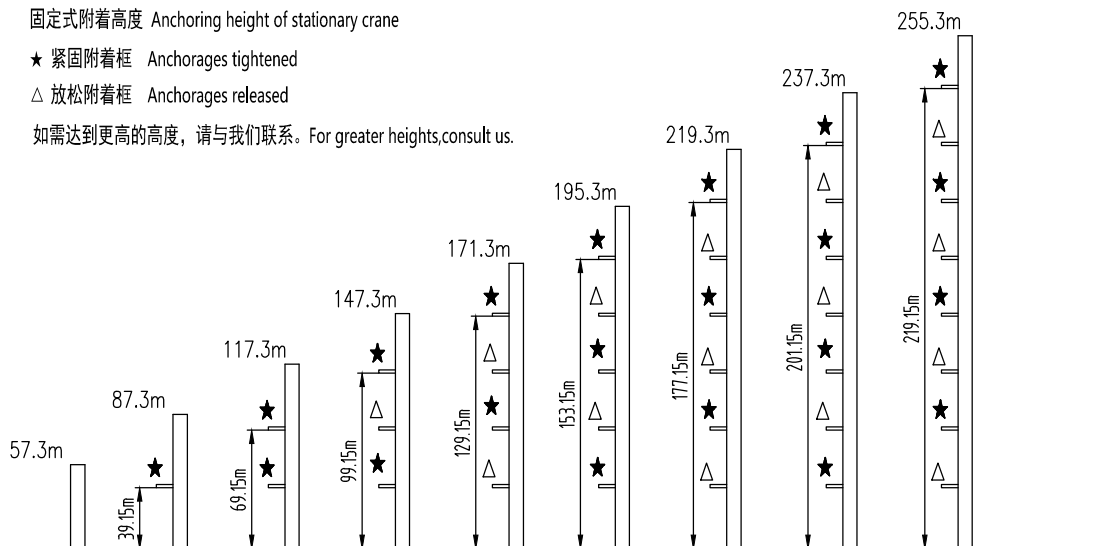


固定式附着高度 Anchoring height of stationary crane

★ 紧固附着框 Anchorages tightened

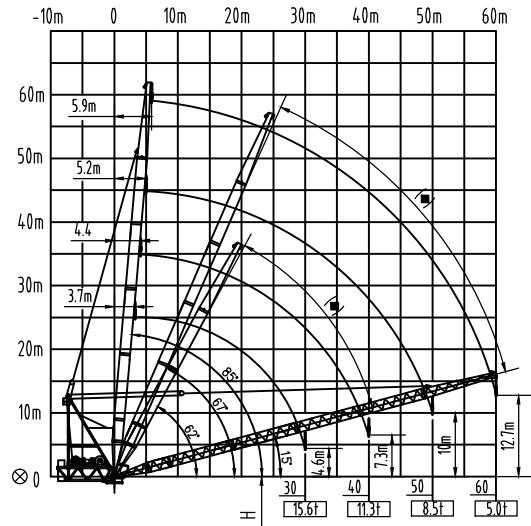
△ 放松附着框 Anchorages released

如需达到更高的高度, 请与我们联系。For greater heights, consult us.

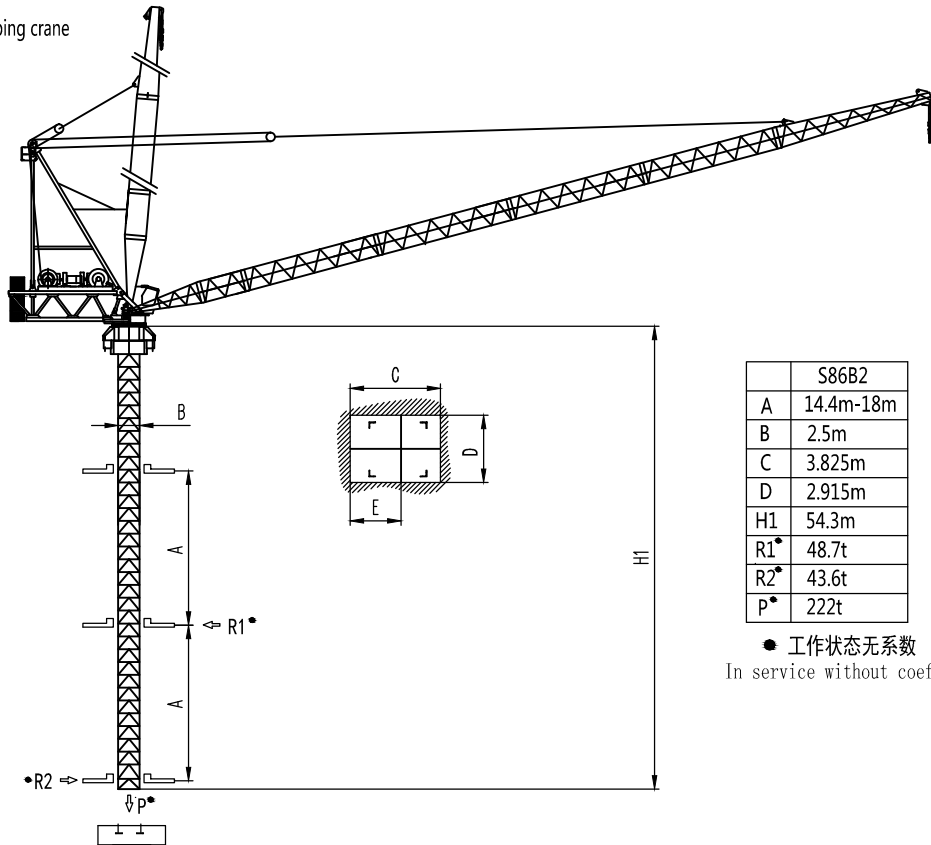


载荷特性 Load diagrams

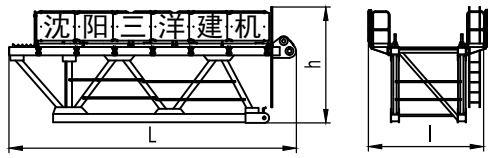
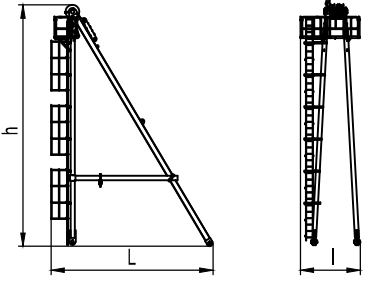
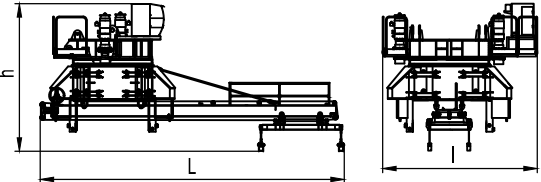
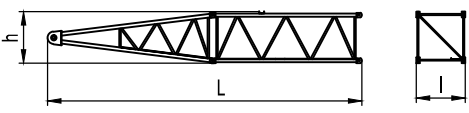
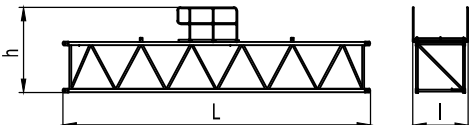
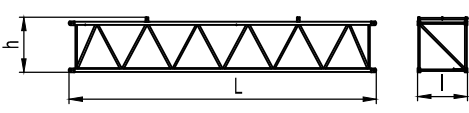
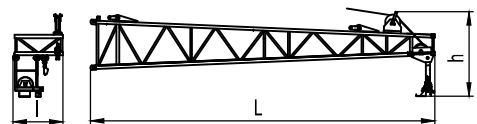
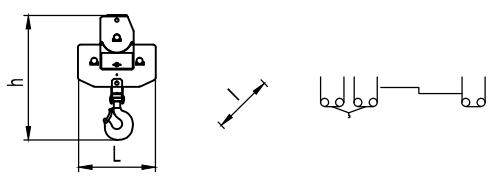
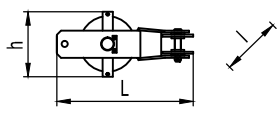
60m	5.9	26	28	30	35	40	45	50	55	60	m				
	↓	12	11.4	10.6	9	7.8	6.9	6.1	5.5	5	t				
50m	5.2	16.7	20	23.6	24	25	26	28	30	35	36.1	40	45	50	m
	↓	24	20	18	17.7	17	16.3	15	13.9	11.8	11.4	10.2	8.9	7.9	t
40m											12	10.8	9.5	8.5	t
40m	4.4	18.8	20	22	24	25	26	28	30	35	37.8	40	m		
	↓	24	22.6	20.4	18.6	17.8	17.1	15.8	14.7	12.4	11.4	10.7	t		
30m	3.7	20	22	24	25	26	28	30	m						
	↓	24	21.7	19.8	19	18.2	16.8	15.6	t						
	↓								12	t					

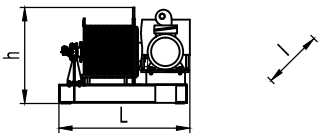
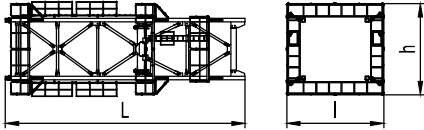
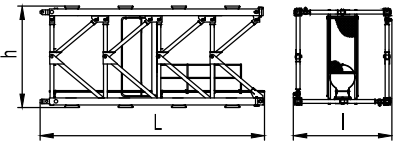
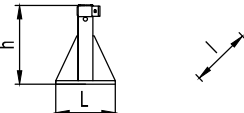

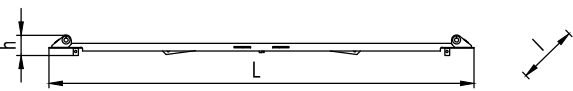
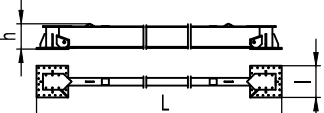
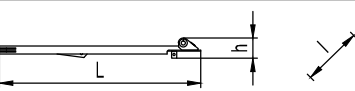
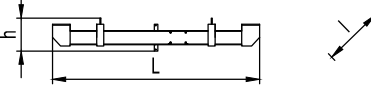
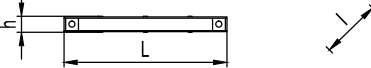
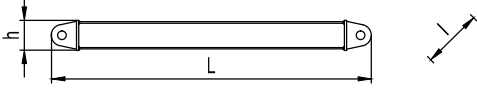


内爬塔机 Climbing crane



外形尺寸重量表 Dimensions weights

塔机回转部分 Slewing		L(m)	l(m)	h(m)	Kg
平衡臂 Counter-jib		8.61	3.6	3.47	7802
塔头 Cat-head		7.6	2.8	11.3	5990
回转机构 Slewing mechanism		9.51	4.85	5.87	25650
起重臂节 Jib section	 1	11.05	1.9	1.82	3223
起重臂节 Jib section	 2	10.5	1.9	2.88	2614
起重臂节 Jib section	 3 4 5	10.5	1.73	1.87	2556
起重臂节 Jib section	 6	12.1	1.8	2.9	3883
吊钩滑轮组 Hook assembly		1.37	0.55	2.19	997
变幅滑轮组 Luffing pulley block		1.6	1.05	0.76	997

塔机回转部分 Slewing		L(m)	l(m)	h(m)	Kg
起升机构 Hoisting mechanism		2.58	3.56	1.7	7826
顶升装置 Telescoping equipment		L(m)	l(m)	h(m)	Kg
顶升套架 Telescopic cage		13.46	5.45	5.13	18370
塔身部分 Mast		L(m)	l(m)	h(m)	Kg
标准节 Standard mast		6.31	2.77	2.85	3790
底部 Base		L(m)	l(m)	h(m)	Kg
固定支脚 Fixing angles		0.8	0.8	1.325	600
底架塔节 Chassis mast		6.285	3.36	3.36	8110
底架整梁 Total beam		11.924	1.12	0.565	2165
底架横梁 Traverse		8.89	0.89	0.71	1767
底架半梁 Semi-beam		6.38	1.12	0.565	1043
底架扁担梁 Carring-pole beam		4.65	0.36	0.75	620
底架力腿 Strut bar		2.834	0.17	0.18	115
底架撑杆 Brace rod		5.52	0.44	0.37	835

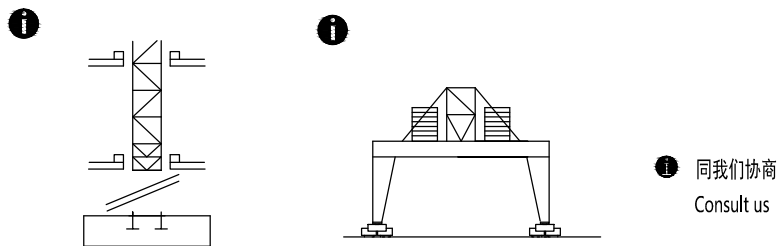
机构特性 Mechanisms specification														Kw	
起升 Hoisting		110LVF*	m/min	0-4.56	0-19	0-38	0-57	0-76	0-2.28	0-9.5	0-19	0-28.5	0-38	500	110
		90LVF	m/min	0-4.32	0-18	0-36	0-54	0-72	0-2.16	0-9	0-18	0-27	0-36	800	90
			t	12	12	12	6	3	24	24	24	12	6	>800*	
变幅 Luffing		75DVF	min	0-4									75		
回转 Slewing		9SVF	r/min	0-0.53									9x3		
		145SVT		145Nm x 3											
行走 Travelling		5.2TRVF	m/min	0-18									5.2x8		
电源		Power Supply		380V 50Hz / 440V 60Hz											
KVA 供电容量		Necessary Electric Power		315KVA											

- * 同我们协商, Consult us
- * 标准配置, Standard configuration

平衡臂配重
Counter-jib ballast

60m	8.6m	40
50m	8.6m	37.5
40m	8.6m	32.5
30m	8.6m	25

可变换的其它安装方式
Mounting possibilities



F 反力 ● 工作状态 In service ⊕ 自重 不带载荷及配重, 最大臂长及标准高度时的自重。
Reactions ■ 非工作状态 Out of service Self-load Without load and counter-weight with longest jib and standard height