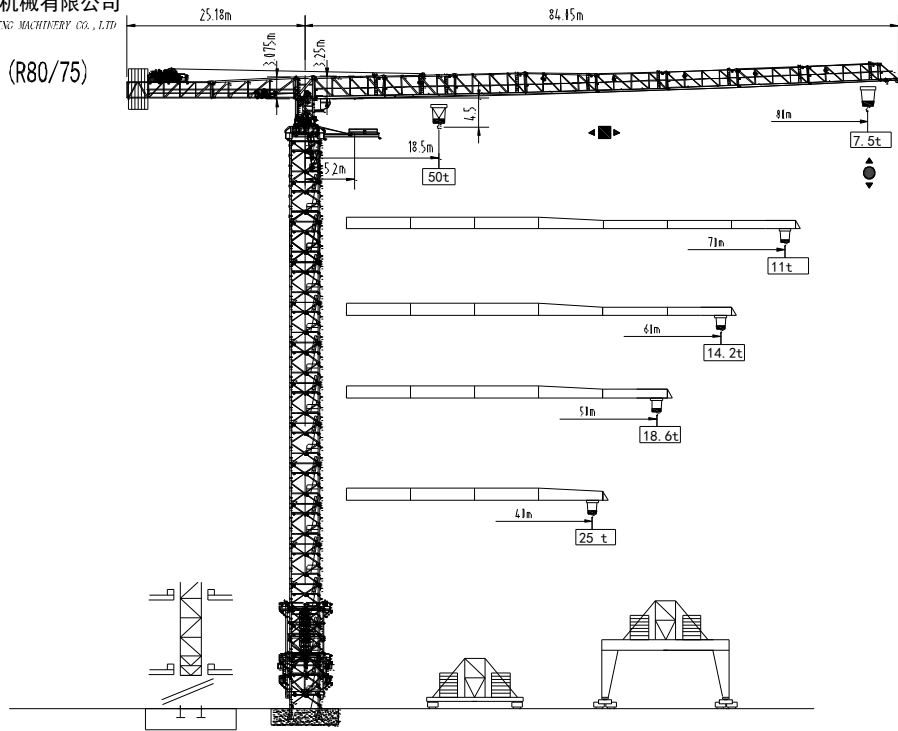

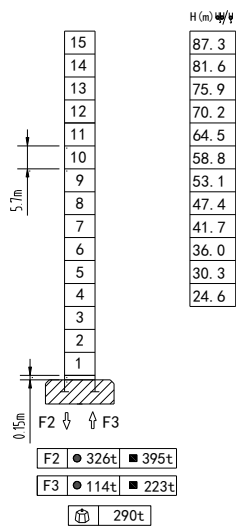


TOWER CRANE QTP型1000tm (R80/75)

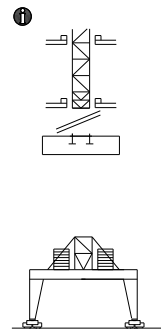


TOWER CRANE R80/75

塔身截面 Mast  $\square 4m \times 4m$   80m



可变换的其它安装方式  
Mounting possibilities



**!** 同我们协商  
Consult us

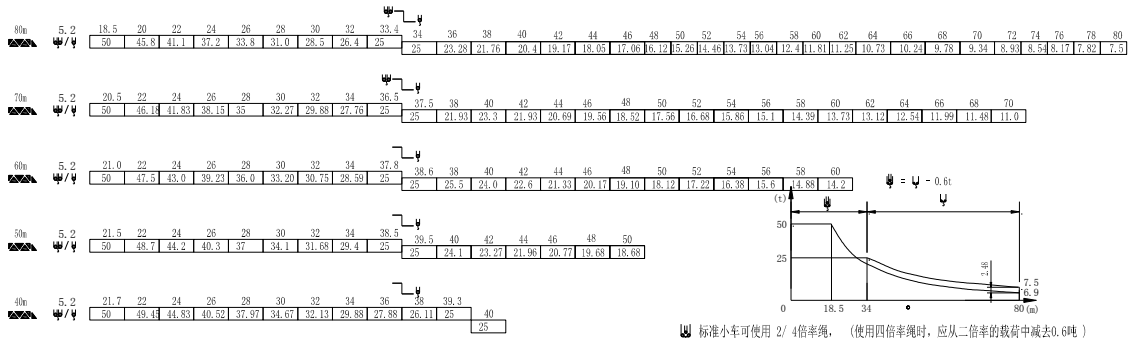
F 反力 Reactions   
 

- $\bullet$  工作状态 In service
- $\blacksquare$  非工作状态 Out of service

 自重 不带载荷及配重, 最大臂长及标准高度时的自重   
 Without load and counter-weight with longest jib and standard height



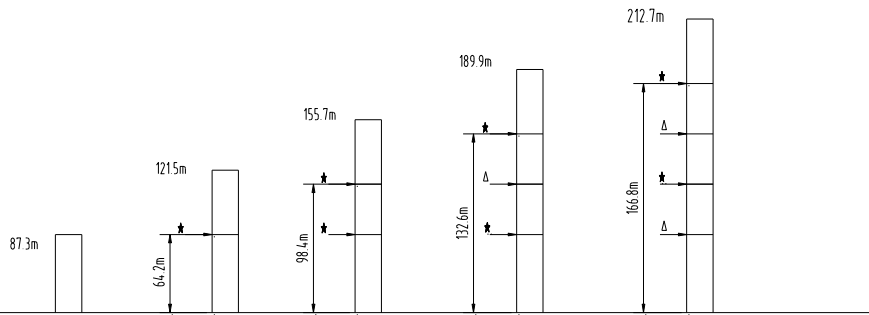
载荷特性 Load diagrams



标准小车可使用 2/4 倍率绳, (使用四倍率绳时, 应从二倍率的载荷中减去 0.6 吨)  
standard trolley 2/4 fall. (When using  $\psi$  subtract 0.6t from the  $\psi$  loads).

固定式附着高度

- ★ 紧固附着框
- △ 放松附着框



机构特性 Mechanisms specification		$\psi$			$\psi$			$\psi$	kw		
起升 Hoisting	$\updownarrow$	139LVF	m/min	0-24	0-36	0-48	0-12	0-18	0-24	750	132
			t	25	12.5	6.25	50	25	12.5		
变幅 Trollying	$\leftarrow \rightarrow$	22TVF	m/min	0-50						22	
回转 Slewing	$\odot$	11SVF	r/min	0-0.45						11x4	
电源 Power Supply		380V 50Hz /440V 60Hz									
KVA 供电容量 Necessary Electric Power		250KVA									