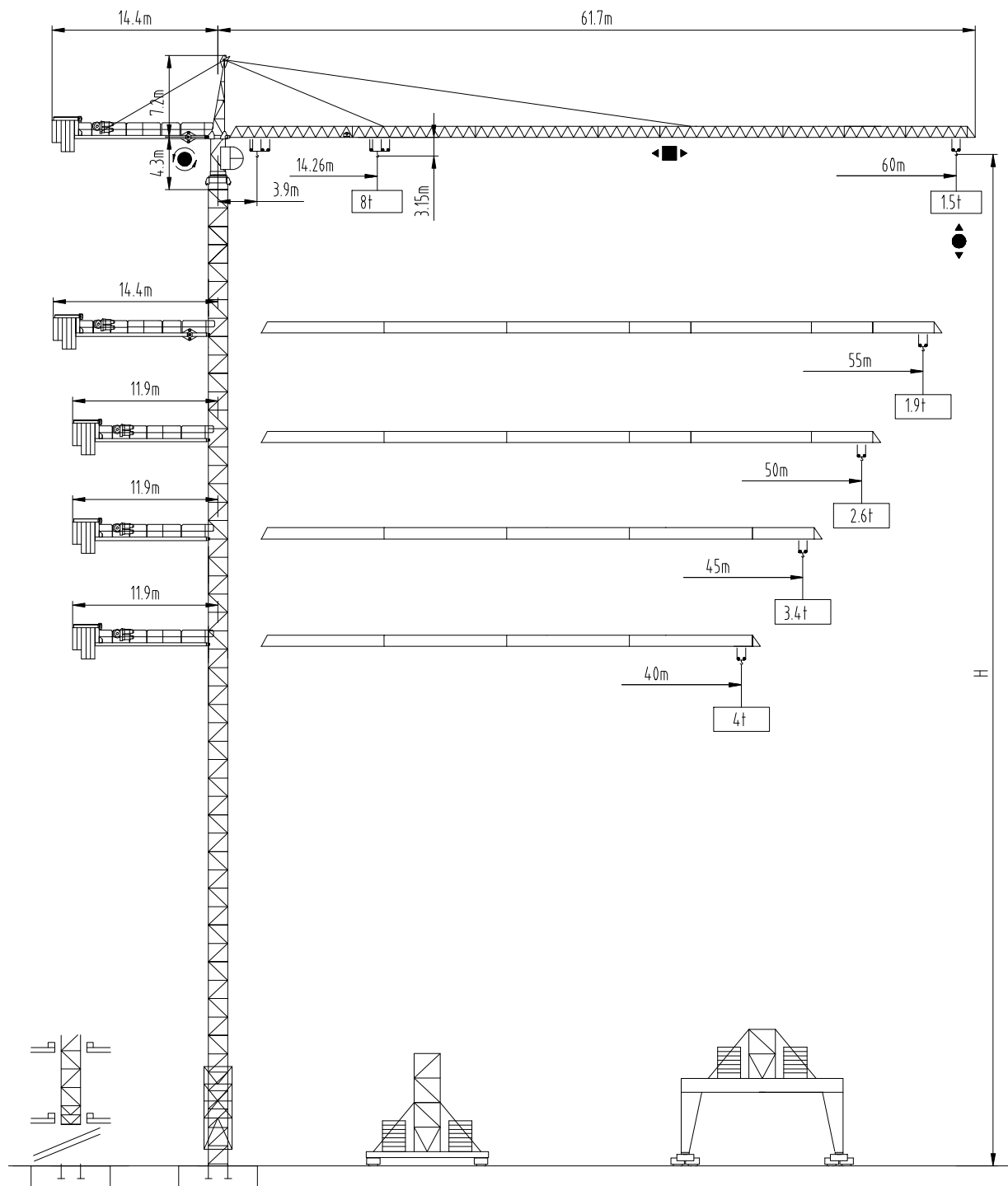




沈阳三洋建筑机械有限公司  
SHENYANG SANYO BUILDING MACHINERY CO., LTD

TOWER CRANE QTZ型115tm  
(H20/15)



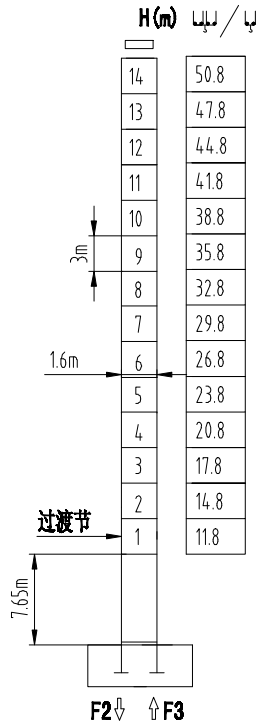


塔身截面 Mast □ 2mx2m

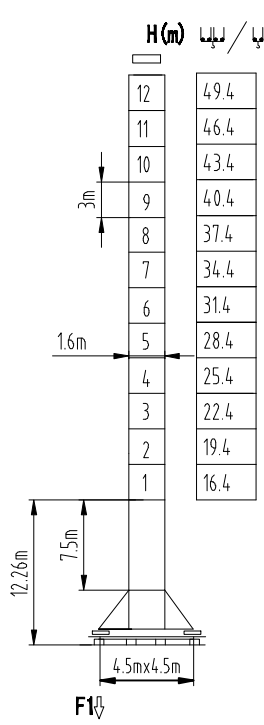
40-60m

PA452

SA452



F2	• 110t	▪ 172t
F3	• 65t	▪ 141t
	⊕ 47.6t	



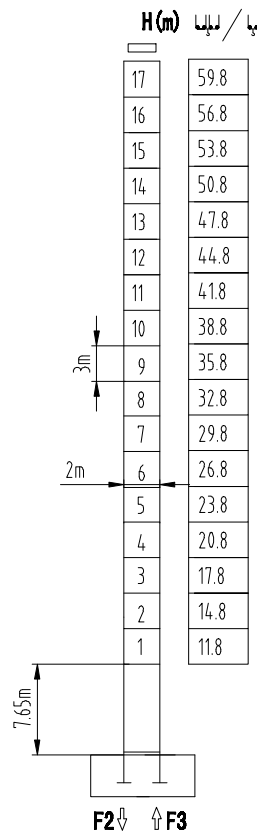
F1	• 70t	▪ 89t
	⊕ 50t	

塔身截面 Mast □ 2mx2m

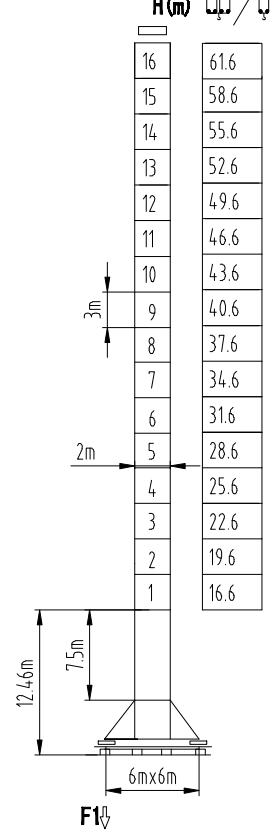
40-60m

PA664

VA650



F2	• 100t	▪ 199t
F3	• 58t	▪ 161t
	⊕ 60t	

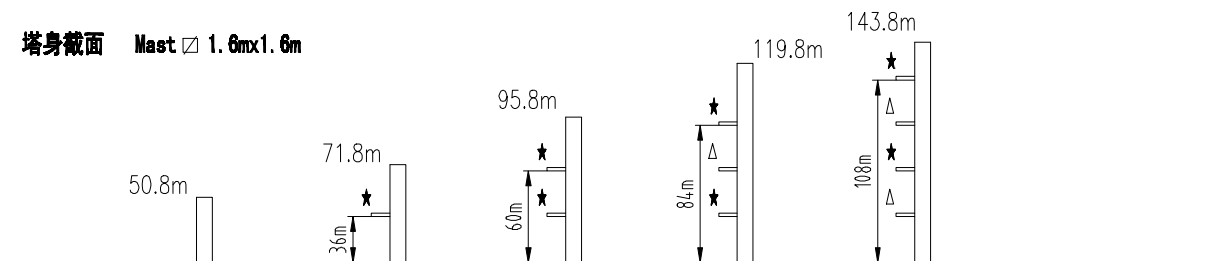


F1	• 86t	▪ 115t
	⊕ 71t	

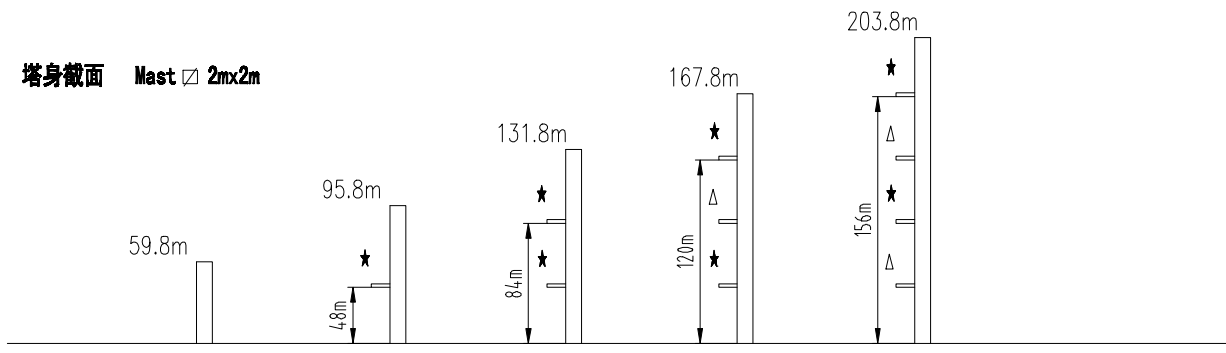
固定式附着高度 Anchoring height of stationary crane

★ 紧固附着框 Anchorages tightened    Δ 放松附着框 Anchorages released    如需达到更高的高度, 请与我们联系。For greater heights, consult us.

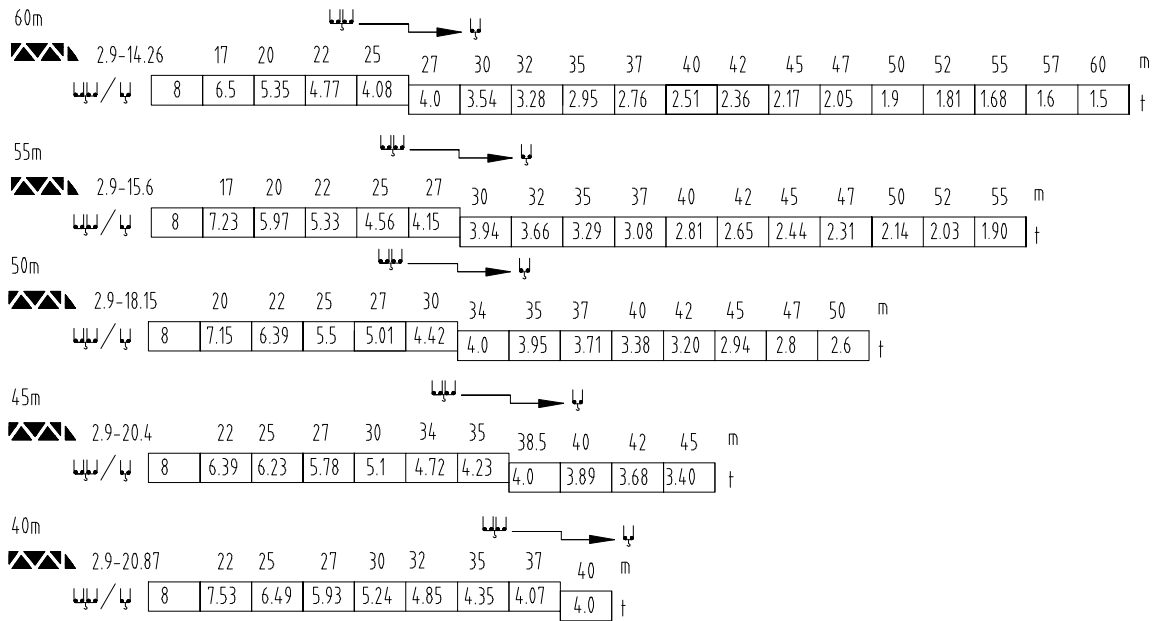
塔身截面 Mast □ 1.6mx1.6m



塔身截面 Mast □ 2mx2m



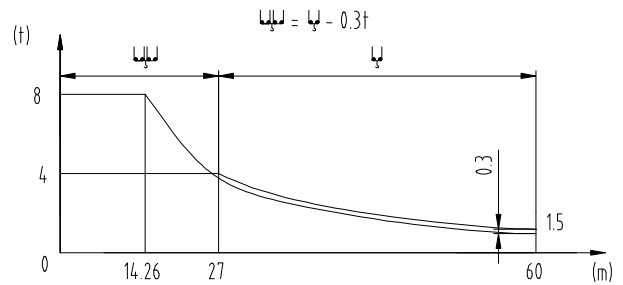
### 载荷特性 Load diagrams



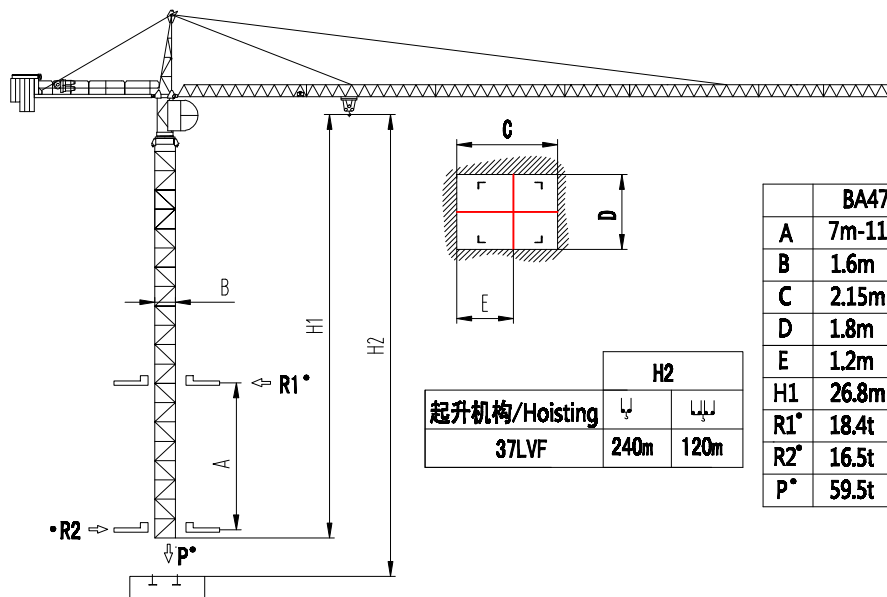
标准小车可使用 2/4 倍率绳 standard trolley 2/4 fall.

使用四倍率时, 应从二倍率的载荷中减去 0.3 吨

When using 4x fall, subtract 0.25t from the loads



### 内爬塔机 Climbing crane

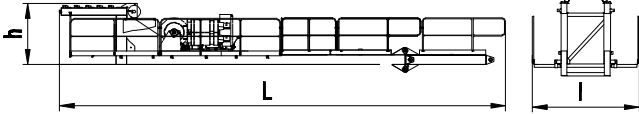
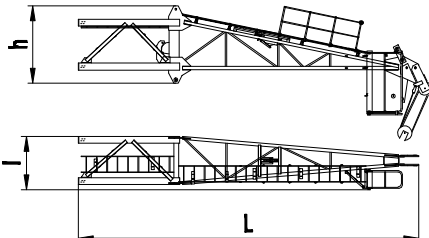
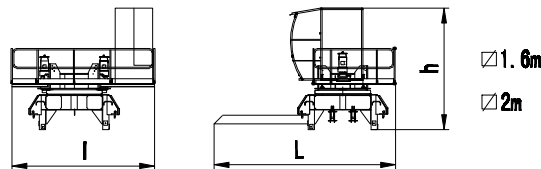
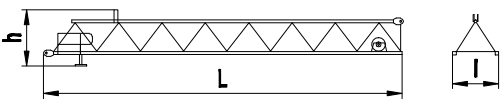
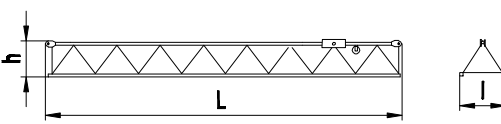
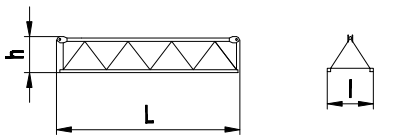
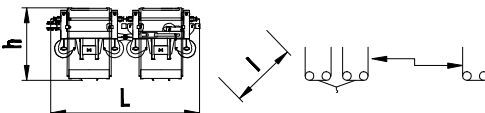
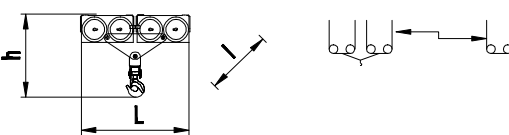
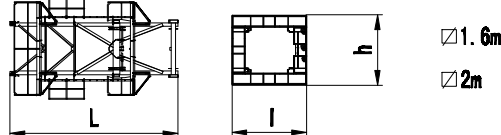


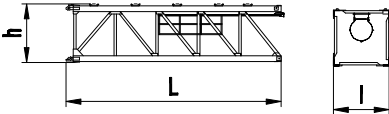
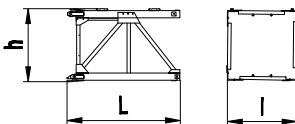
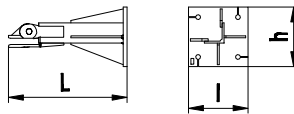
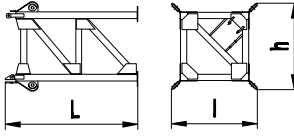
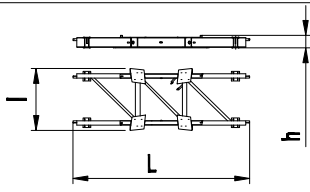
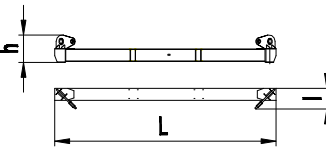
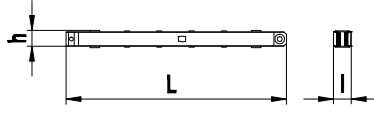
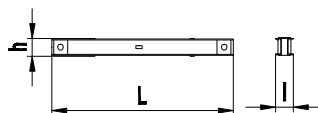
	H2	
起升机构/Hoisting	240m	120m
37LVF		

	BA476	BA479	BA675
A	7m-11m	12m-14m	16m-21m
B	1.6m	1.6m	2m
C	2.15m	2.31m	2.58m
D	1.8m	1.77m	2.17m
E	1.2m	1.36m	1.495m
H1	26.8m	43.3m	53.6m
R1°	18.4t	21.8t	27.9t-21t
R2°	16.5t	18.9t	14.7t-10.4t
P°	59.5t	72.5t	82.5t

● 工作状态无系数  
In service without coefficient

外形尺寸重量表 Dimensions weights

塔机回转部分 Slewing		L(m)	l(m)	h(m)	Kg	
平衡臂 Counter-jib		13.90	2.61	1.90	5445	
塔头 Cat-head		9.45	1.32	2.08	4080	
回转机构 Slewing mechanism		∇1.6m	6.08	3.78	3.46	4150
		∇2m	6.18	3.78	3.46	3932
起重臂节 Jib section		1	10.15	1.19	1.26	1576
起重臂节 Jib section		2	10.12	1.19	0.96	1112
		3	10.23	1.19	0.96	946
		5	10.25	1.19	0.95	825
起重臂节 Jib section		4	5.23	1.19	0.95	470
		6	5.25	1.19	0.95	430
		7	5.25	1.19	0.95	668
		8	5.25	1.19	0.95	668
变幅小车 Trolley		2.41	1.36	1.12	425	
吊钩滑轮组 Hook assembly		1.74	0.195	1.12	257	
顶升装置 Telescoping equipment		L(m)	l(m)	h(m)	Kg	
顶升套架 Telescopic cage		∇1.6m	6.785	3.436	3.436	3495
		∇2m	7.26	4.3	4.05	4288

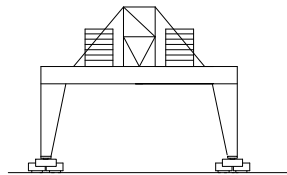
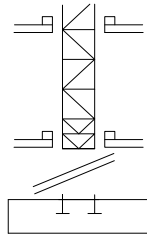
塔身部分 Mast		L(m)	l(m)	h(m)	Kg	
基础节 Basic mast		□1.6m	7.76	1.70	1.76	2625
		□2m	7.76	2.0	2.1	3790
标准节 Standard mast		□1.6m	3.28	1.70	1.76	1188
		□2m	3.28	2.0	2.1	1577
底部 Base						
固定支脚 Fixing angles		□1.6m	1.195	0.49	0.49	181.5
		□2m	1.2	0.6	0.6	295
底架塔节 Chassis mast		□1.6m	3.69	2.00	2.00	2240
		□2m	3.80	2.50	2.50	3780
底架纵梁 Side member		□1.6m	6.32	2.08	0.54	1200
		□2m	7.14	2.484	0.54	2140
底架横梁 Traverse		□1.6m	4.88	0.467	0.705	1110
		□2m	6.38	0.58	0.808	1500
底架撑杆 Brace rod		□1.6m	3.86	0.27	0.28	350
		□2m	4.45	0.34	0.37	620
底架水平杆 Horizontal member		□1.6m	1.66	0.17	0.12	65
		□2m	2.44	0.22	0.24	205

机构特性 Mechanisms specification														Kw	
起升 Hoisting		37LVF	m/min	0-5	0-20	0-40	0-61	0-82	0-2.5	0-10	0-20	0-30.5	0-41	490	37
			t	4	4	4	2	1	8	8	8	4	2		
变幅 Trolleying		4TVF	m/min	0-55										4	
回转 Slewing		5.5SVF	r/min	0-0.7										5.5x2	
		95SVT												95Nm x 2	
行走 Travelling		4TRVF	m/min	0-12										4x4	
电源 Power Supply			380V 50Hz / 440V 60Hz												
KVA 供电容量 Necessary Electric Power			75KVA												

平衡臂配置  
Counter-jib ballast

60m	14.4m	16.2
55m	14.4m	15.4
50m	11.9m	18.03
45m	11.9m	17.42
40m	11.9m	16.2

可变换的其它安装方式  
Mounting possibilities



同我们协商  
Consult us

F 反力 Reactions	<ul style="list-style-type: none"> <li>• 工作状态 In service</li> <li>▪ 非工作状态 Out of service</li> </ul>	Ⓜ 自重 Self-load	不带载荷及配重, 最大臂长及标准高度时的自重. Without load and counter-weight with longest jib and standard height
-------------------	---	-------------------	---

起升机构

图号/代号

37LVF

37YFL20久和整体外购