

# 定量高压单泵

## DVQ25系列



Specifications

**01**

### 商品规格 品质有保证

Commodity specifications and quality guaranteed

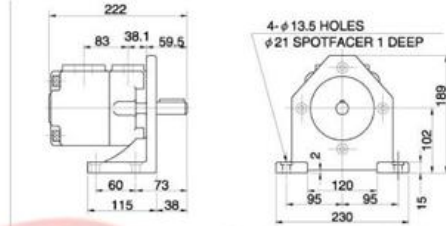
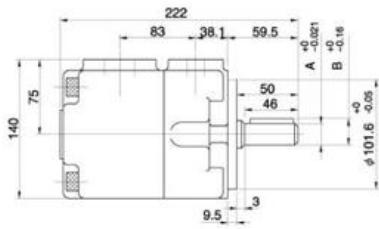
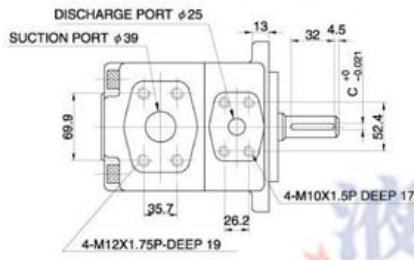
Model number 型號	-26 Displacement c.c/rev 吐油量	-F Mounting Type 安裝方式	-R Rotation 轉向	A Discharge Position 出口位置	A Sution Position 進口位置	01 Shaf Type 心軸種類
DVQ20	6,8,11,14 17,19,23 26,32,34 38	F: Flange Type 法蘭型 L: Foot Type 腳座型	View from Shaft End 從心軸方向看 R: Clockwise 順時針 L: Anti- Clockwise 反時針	A: Upward (Normal) 向上 B: Downward 向下 R: On Right Hand 右邊 L: On Left Hand 左邊	A: Upward (Normal) 向上 B: Downward 向下 R: On Right Hand 右邊 L: On Left Hand 左邊	01 Normal
DVQ25	18,22,26 32,38,43 47,52,60 65,75		R: Clockwise 順時針 L: Anti- Clockwise 反時針	R: On Right Hand 右邊 L: On Left Hand 左邊	R: On Right Hand 右邊 L: On Left Hand 左邊	

Model 型號	Deliver Flow (ℓ/min) at no-load pressure 無負壓的傳輸流量					Running Speed (rpm) 轉速		Max Pressure (Kgf/cm <sup>2</sup> ) 最高壓力	
	Running Speed (rpm) 轉速					Max 最大	Min 最小	Cont.	Peak.
	1000	1200	1500	1800					
DVQ20	06	6.2	7.4	9.3	11.2	1800	800	210	260
	08	8.1	9.7	12.1	14.6	1800	800	210	260
	11	11.2	13.4	13.4	20.1	1800	800	210	260
	14	14.3	17.1	21.5	25.7	1800	800	210	260
	17	17.1	20.5	25.6	30.7	1800	800	210	260
	19	19.2	23.0	28.8	34.5	1800	800	210	260
	23	23.3	27.9	34.9	41.9	1800	800	210	260
	26	26.1	31.3	39.1	46.9	1800	800	210	260
	32	32.1	38.3	47.6	—	1500	800	175	240
	34	34.1	40.8	50.4	—	1500	800	175	240
38	38.1	45.9	—	—	1200	800	175	240	
DVQ25	18	18.1	21.7	27.2	32.6	1800	800	210	260
	22	22.1	26.5	33.3	39.8	1800	800	210	260
	26	26.2	31.4	39.3	47.1	1800	800	210	260
	32	32.1	38.5	48.1	57.7	1800	800	210	260
	38	38.2	45.8	57.3	68.7	1800	800	210	260
	43	43.2	51.8	64.8	77.7	1800	800	210	260
	47	47.1	56.5	70.0	85.0	1800	800	210	260
	52	52.3	62.7	78.4	94.1	1800	800	210	260
	60	60.2	72.7	90.3	108.3	1800	800	210	260
	65	65.3	78.3	97.9	117.5	1800	800	210	230
75	75.0	90.0	112.5	—	1500	800	210	230	

# 安装尺寸图 让安装更省心

Installation size figure let more worry

**DVQ25** Max. Pressure: 260 Kg/cm<sup>2</sup> (Peak)  
Max. Speed: 1800 rpm



Foot Type (脚座型)

No.4 Shaft  
16/32 d.p. -13  
teeth 30°  
pressure angle  
Flat root side  
fit.

	A	B	C
NO.01-Shaft	φ22.23	24.5	6.35
NO.02-Shaft	φ25.4	28.18	6.35
NO.03-Shaft	φ30.0	33.0	7.0
NO.04-Shaft	Spline shaft		

