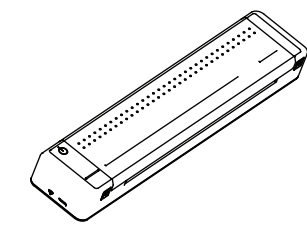


Quick Start Guide

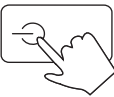
MT800



Manufacturer:
Xiamen Hanin Electronic Technology Co.,Ltd.
Address: No.96, Rongyuan Road, Tong'an District,
Xiamen, China 361100
E-mail: support@hpert.com
Web: www.hpert.com

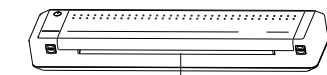
Operation Procedures
(From Mobile Phone)

1. Power on: Hold down the power button for 3 seconds, and then release it when the printer is turned on. (Power button is touch button)

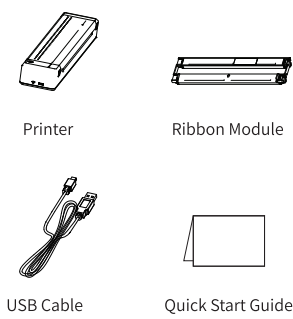


Note: In power-on status, hold down the power button for 3 seconds to turn off the printer.

2. Loading paper: Put the paper into the paper inlet in parallel. Printer will feed a distance automatically after it detects the paper. If the buzzer sounds once when paper feeding stops, it shows that the paper is loaded successfully and the printer is ready.



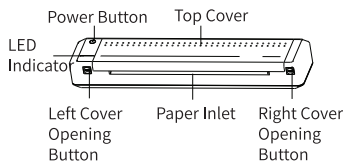
Packing List



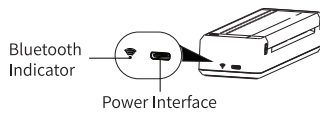
Note:
1) The packing items are actually based on the order.
2) The ribbon module is embedded in the printer when leaving the factory.

Appearance and Components

■ Front

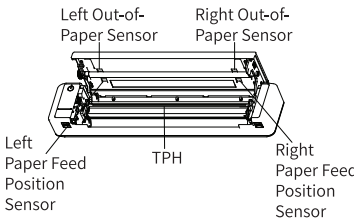


■ Left



Note: indicates Bluetooth Function.

■ Inner



LED Indicator

White LED indicator is lighting:
Printer is in standby status

Green LED indicator is lighting:
Printer is in charging mode, and green LED indicator will be off when fully charged

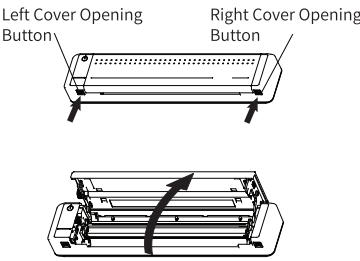
Red LED indicator is flashing:
Printer is out of ribbon, please replace it

Print Self-test Page

In the sate of power on, continuously press the power button for 3 times, the printer will print the self-test page.

Loading Ribbon

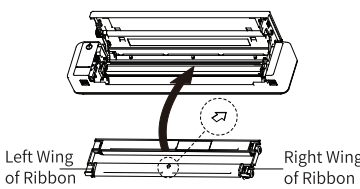
1. Press the [PUSH] button on both sides of the printer at the same time, then lift the printer cover upward.



NOTE:

The environmental condition of the ribbon is as below:
Operating Temperature: 5°C~35°C
Operating Humidity: 20%~85%RH
Storage Temperature: -5°C~45°C
Storage Humidity: 20%~85%RH

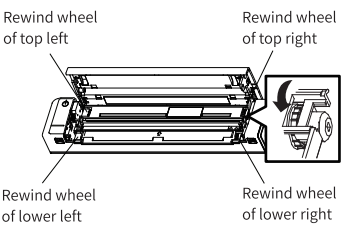
2. Hold the left and right wings of the ribbon by your hands, then align it to the printer per the arrow direction and press it down.



NOTE:

To avoid errors when loading the ribbon, please make sure that the arrow direction marked on the ribbon module align to the printer.

3. Rotate the ribbon rewind wheels of both top left and lower right (or top right and lower left) towards the center simultaneously to make it smooth.



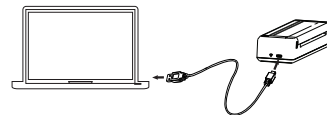
4. Press down the cover by hands until it clicks into place.



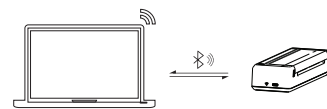
Operation Procedures
(From Computer)

1. Connect the printer to the computer:
Connect the printer to the computer via Bluetooth/USB, and then install the printer driver on the computer.
Driver can be downloaded from the website:
<http://mt.hpert.com/en>

USB connection



Bluetooth connection

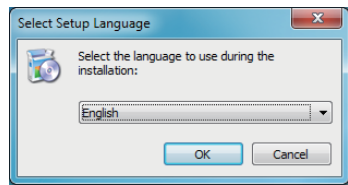


NOTE:

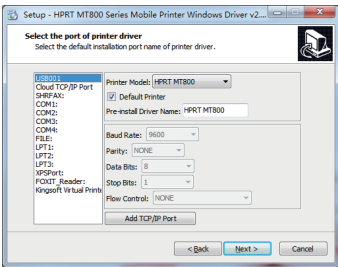
1) MT800 can be charged via computer USB port or AC adapter. Please note that the AC adapter is not supplied.
2) PC Bluetooth connection only support with Windows system currently.
3) Under different operating system and different type of driver, the screen has slight differences. Please operate it according to the tips. Take HPRT MT800 (Windows 7) as example.

2. Install Driver:

1) Double click the driver program.
2) Choose the setup language “English” and click “OK”.



3) Choose the matched type and port, and click “Next”.



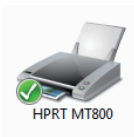
Note:

If the printer is turned on and has connected to the computer, the driver will be installed automatically, and this step can be ignored.

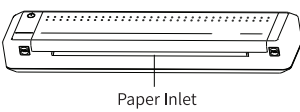
4) Click “Finish”.



5) After installation, the icon can be found in “Start” → “Devices and Printers”.



3. Loading paper: Put the paper into the paper inlet in parallel. Printer will feed a distance automatically after it detects the paper. If the buzzer sounds once when paper feeding stops, it shows that the paper is loaded successfully and the printer is ready.

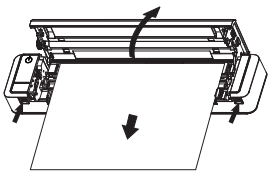


4. Print: Open the file to print, choose “MT800” for printer device, click “print”.

NOTE:

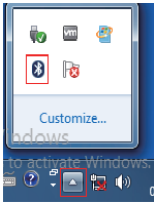
Don’ t pull the paper out forcefully while the printer cover is closed, or it may damage the printer. Please remove the paper as follows.

1. Press the [PUSH] button on both sides of the printer at the same time, then lift the printer cover upward.
2. Remove the paper.

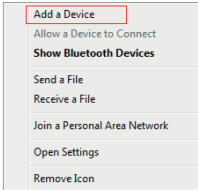


Using Driver via Bluetooth
(Only for Windows System)

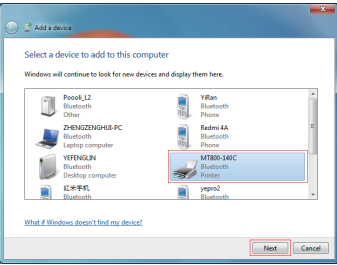
1. Turn on the printer.
2. Turn on the computer. The Bluetooth icon will show at the lower right of the screen. If the computer is not configured with Bluetooth function, you need to insert a Bluetooth Dongle into its USB connector.



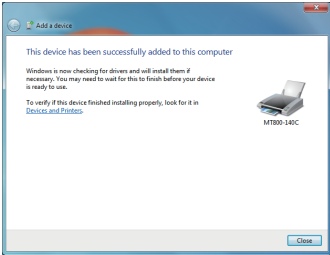
3. Right click the icon, choose “Add a Device”.



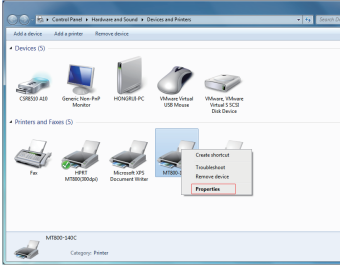
4. Find the corresponding printer, click “Next”.



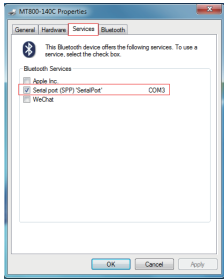
5. Add a printer successfully as shown in the figure. The printer takes MT800-140C for an example.



6. Click “Start” → “Devices and Printers”. Right click “MT800-140C” and choose “Properties”.

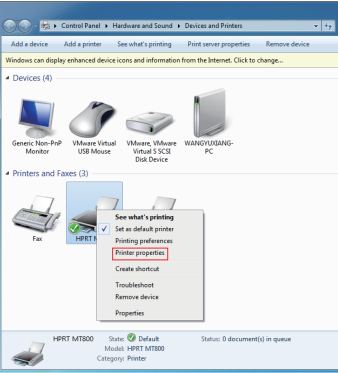


7. In “MT800-140C Properties”, choose “Services” and find the corresponding port. As shown in the figure, the port of MT800-140C is COM3.

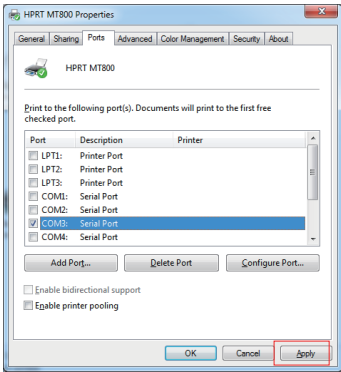


8. Install MT800 Windows driver program on the computer, please refer to Step 2 in “Operation Procedures (From Computer)”.

9. After installing the driver, find the icon of “HPRT MT800” in “Devices and Printers”, right click “Printer properties”.

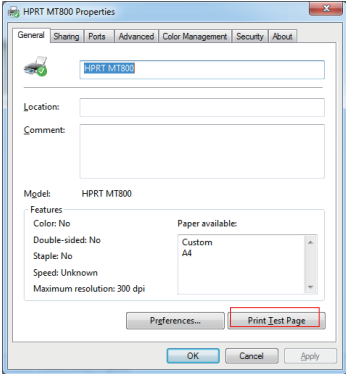


10. Click “Ports” , choose “COM3” as driver port, click “Apply”.

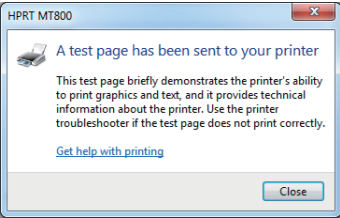


Note: If “COM3” has been selected as printer driver port during the driver installation, ignore this step.

11. Click “Print Test Page”.



12. If the printer can print the test page, it will pop up the dialog box below. If it failed to print, please check if Bluetooth is connected or Bluetooth connection port is occupied.



Consumables Precautions

In order to have better print quality, please follow the suggestions below.

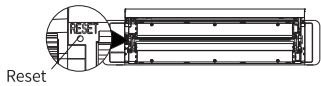
- 1. Please choose the paper as smooth as possible.
- 2. Please keep the ribbon under the temperature of -5°C~45°C and humidity of 20%~85%RH.
- 3. Make sure the paper is even when feeding.
- 4. Remove dust on the surface of the ribbon before use.

Note: Under different operating systems and different types of driver, the screen has slight differences. The above screenshot is based on Windows 7 system.

General Q&A

1. When the button is abnormal and can't respond, how to deal with it?

Please remove the ribbon, lightly hold down the [Reset] button with toothpick or pin for 2 seconds, then turn off the printer and restart it.



2. Does the printer require thermal paper?

No, it doesn't require thermal paper when the ribbon is loaded. Just use the A4 paper, which can be preserved permanently by thermal transfer printing of ribbon.

3. Does the printer require ink cartridge?

No, but it requires ribbon.

4. Is there any supplies for the printer?

There is one ribbon for the printer, but A4 paper should be purchased by yourself.

5. Will the Bluetooth indicator be on when the App has been connected to the printer?

Yes, it will. If the App has been connected to the printer, the Bluetooth indicator will be on; if not, it will be off.

6. How many copies can one ribbon print?

It can print about 45 copies. However, If it is double-sided printing, the number of copies will be reduced accordingly.

7. Does the printer have a battery?

The printer has a built-in lithium battery, which can print 70 copies for A4 paper when fully charged (it takes about 3 to 4 hours for fully charging).

Troubleshooting - Troubles Occur During Printing

Problem Description	Problem Reason	Solution
Printing process stops printing	Battery power is too low	Please use the exclusive charging cable to charge
Paper jam occurs during printing	When the paper is automatically fed, there is a deviation, resulting in paper jam	Please open the cover, remove the jammed paper, and place the paper in parallel into the paper inlet
The ribbon is taken out when printing	The ribbon is loose before printing	Please roll the ribbon to a flat state by rewind wheel
Print font missing, with white lines	Ribbon with folds, damaged	Please roll the ribbon to a flat state and print with a good ribbon
	Uneven paper	Please print with flat paper
The printer cannot automatically absorb paper	The cover is not properly closed	Please check that both sides of the cover are in place

FCC WARNING

This device complies with part 15 of the FCC Rules. Operation is subject to the following two conditions: (1) this device may not cause harmful interference, and (2) this device must accept any interference received, including interference that may cause undesired operation.

Any changes or modifications not expressly approved by the party responsible for compliance could void the user's authority to operate the equipment.

NOTE: This equipment has been tested and found to comply with the limits for a Class B digital device, pursuant to Part 15 of the FCC Rules. These limits are designed to provide reasonable protection against harmful interference in a residential installation. This equipment generates, uses and can radiate radio frequency energy and, if not installed and used in accordance with the instructions, may cause harmful interference to radio communications. However, there is no guarantee that interference will not occur in a particular installation.

If this equipment does cause harmful interference to radio or television reception, which can be determined by turning the equipment off and on, the user is encouraged to try to correct the interference by one or more of the following measures:

- Reorient or relocate the receiving antenna.
- Increase the separation between the equipment and receiver.
- Connect the equipment into an outlet on a circuit different from that to which the receiver is connected.
- Consult the dealer or an experienced radio/TV technician for help.

To maintain compliance with FCC's RF Exposure guidelines, This equipment should be installed and operated with minimum distance between 20cm the radiator your body: Use only the supplied antenna.