

## 活塞式压缩机

### Reciprocating Compressor Unit

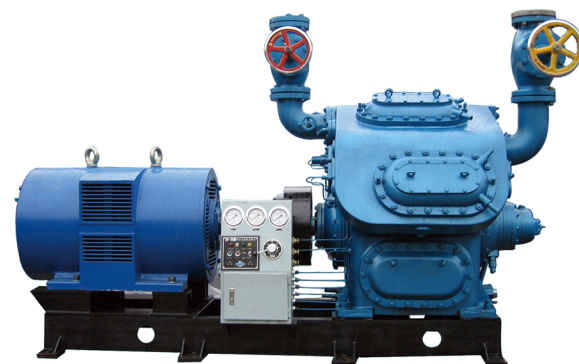
#### 能力范围 Scope

制冷量 | Refrigeration Capacity 26.7-512 kW (-15°C/30°C)

#### 应用领域 Application

广泛应用于国民经济各部门需要实现人工制冷的场合，如石油、化工、制药等工业产品的生产，国防、科研方面的低温试验，食品的低温加工贮藏和运输，工厂、医院及公共场所等大型建筑的空气调节等。

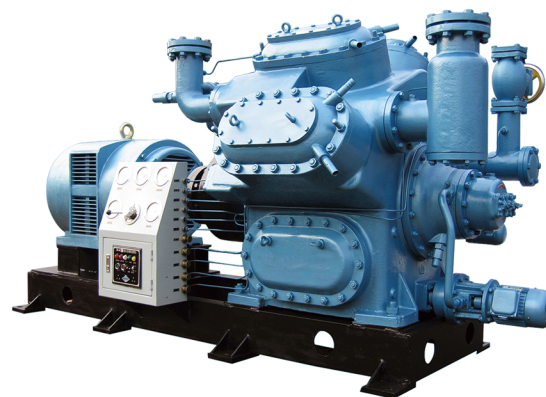
Widely used in various fields need to achieve artificial refrigeration, such as petroleum, chemical industry, pharmaceutical, cryogenic laboratory of national defense and scientific research, food low temp processing, storage and transportation, and low temperature test, low temperature processing of food storage and transportation, air conditioning in factories, hospitals and other large public places building.



#### 产品特性 Features

- 采用Y系列高效节能型电动机，防护等级为 IP23/IP54/IP55
- 机组转速高、体积小、零部件互换性强
- 压缩机轴封为进口轴封，密封垫为进口原材料
- 设有能量调节装置，可实现无负荷启动
- 装有放油三通阀，可在正常运转中加油
- 运行安全可靠

- \* Adopt Y series of high efficiency energy-saving motors, protection class IP23/IP54/IP55
- \* Unit is with high speed, small size and interchangeable parts
- \* Compressor shaft seal and gasket are import brand.
- \* Provided energy adjustment device to realize unit start without load
- \* Equipped with three-way oil drainage valve. Oil can be charged during normal operation
- \* Safe and reliable operation



#### 100系列活塞式压缩机技术参数表

Series 100 Reciprocating Compressor Unit Technology Parameter Table

型号 Model			2AZ10	4AV10	6AW10	8AS10	4ASJ10	8ASJ10	
机组 Unit	制冷量 Refrigeration Capacity	标准工况 Standard Condition	kW	26.7	54	81.4	108	17.5 工况-35°C/+35°C	37.2 工况-35°C/+35°C
		空调工况 Air Conditioning Condition	kW	54	116	174.4	232.6		
	轴功率 Shaft Power	标准工况 Standard Condition	kW	8.12	16	23.8	31.6	10.1 工况-35°C/+35°C	20.4 工况-35°C/+35°C
		空调工况 Air Conditioning Condition	kW	12	24	36	48		
压缩机 Compressor	活塞行程容积 Theoretical Displacement	m <sup>3</sup> /h	63.3	126.6	190	253.3	31.65 (94.95)	63.3 (190)	
	能量调节范围 Capacity Regulating Range			0,1/2,1	0,1/3,2/3,1	0,1/4 1/2,3/4,1	0,1/3,2/3,1	0,1/3,2/3,1	
	进气管径 Suction Pipe Dia.	mm	50	50	65	80	32 (50)	40 (65)	
	排气管径 Discharge Pipe Dia.	mm	40	50	65	80	32 (50)	40 (65)	
	冷却水耗量 Cooling Water Consumption	kg/h	300	500	750	1000	500	1000	
电机 Motor	功率 Power	标准工况 Standard Condition	kW	13	22	37	45	15	30
		空调工况 Air Conditioning Condition	kW	15	30	45	55		
	电压 Voltage	标准工况 Standard Condition	V	380				380	
		空调工况 Air Conditioning Condition	V	380					
	转数 Revolution	标准工况 Standard Condition	r/min	960				960	
		空调工况 Air Conditioning Condition	r/min	960					
外形尺寸(长x宽x高) Outline (LxWxH)	标准工况 Standard Condition	mm	1495x747x850	1917x845x1320	2046x841x1153	2142x855x1167	1750x1135x1310	2663x1025x1978	
	空调工况 Air Conditioning Condition	mm	1495x747x850	1989x845x1320	2115x841x1147	2191x855x1167			
机组重量 Unit Weight	标准工况 Standard Condition	kg	575	1066	1330	1520	1300	1700	
	空调工况 Air Conditioning Condition	kg	603	1100	1480	1600			

注：  
1. 适用条件：单级：最高排气压力 ≤ 1.5MPa，最高排气温度 ≤ 150°C。最大压差 ≤ 1.4MPa；双级：低压级，最高排气压力 ≤ 0.7MPa，最高排气温度 ≤ 120°C。最大压差 ≤ 0.8MPa；高压级，最高排气压力 ≤ 1.5MPa，最高排气温度 ≤ 150°C，最大压差 ≤ 1.4MPa  
2. 括号内数据为低压机参数  
3. 标准工况：-15°C/+30°C，空调工况：+5°C/+40°C

Note:  
1. Conditions: Single-stage: the maximum discharge pressure ≤ 1.5MPa, the maximum discharge temperature ≤ 150 °C, the maximum pressure ≤ 1.4MPa; two-stage: Low stage, the maximum discharge pressure ≤ 0.7MPa, Maximum discharge temperature ≤ 120 °C, the maximum pressure ≤ 0.8MPa; High stage, the maximum discharge pressure ≤ 1.5MPa, the maximum discharge temperature ≤ 150 °C, the maximum pressure ≤ 1.4MPa  
2. Data in parentheses are the low stage parameters  
3. Standard condition: -15°C/+30°C, Air conditioning condition: +5°C/+40°C