

Small portable crusher



Model Specifications

type	CF80	CF120	CF200
Dimensions (mm)	L 8000×W1800 × H2400	L 11000×W2100 × H2700	L 1200×W2400 × H2900
Hammer(pcs)	16	20	24
Hopper size (mm)	3600×1600	4100×1750	4600×1800
Inlet size (mm)	400*500	500*700	530*900
Motor (Kw)	37	55	75~90
Output (ton/h)	40	80	130~150
Diesel engine (optional)	4105	6105	6110

Small portable crusher



WIDELY USED

Crushed materials such as stones, cinder, shale, coal gangue, construction waste, etc.



Highway construction



Railway construction



Construction site



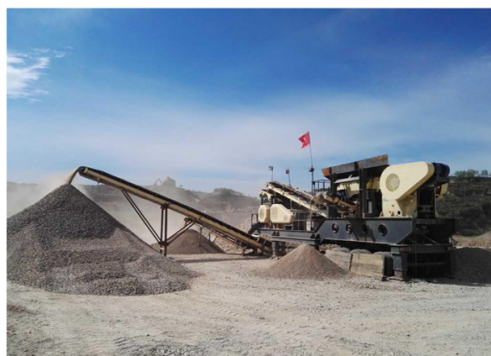
Urban Construction



Agent sales Various crushing products



Agent sales Various crushing products





CAFU MACHINERY



E-mail:sales@xmcafu.com
WhatSapp:+86-18120740098