

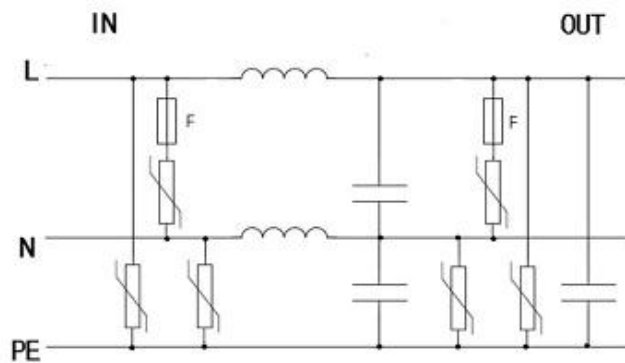
POWER SUPPLY

Single phase 10A~16A Surge Filter Class II+III/Type 2+3

■Type 2+3 ■2-Port SPD ■10~16A filter ■ I_{max} 40kA

BSF Series, BSF40-1/...-16A-3P

- Multi-stage protection circuit with LC Filter design to protect sensitive electronics.
- Provides extensive high frequency & RF filtering
- Application for 220~277V (L-N) TT/TN, or any single phase system with a grounded neutral
- Protection capability 40 kA 8/20us
- Load current rating 16A, 10A is available
- Built in backup fuse for fault current protection
- IEC socket for easy wiring
- LED failure indication
- All mode protection
- Comply with UL1449 4th,IEEE C62.41, CSA C22.2,IEC/EN 61643-11



Model		BSF40-1/320-10A-3P	BSF40-1/320-16A-3P
According to		IEC61643-11; UL1449-4th; IEC610006; ANSI/IEEE C62.41; AS1768-1991;AS3100	
Category IEC/EN/UL		Class II+III/ Type 2+3 / Type 2	
Protection Mode		All mode protecton	
Protection technology		MOV tech, Thermal protection LC filter, Built-in backup fuse	
Power system	U _n	220-277V single phase	220-277V single phase
Max. continuous operating voltage (AC/DC)	U _c	320/420	320/420
Rated load Current	I _l	10A	16A
Nominal discharge current(8/20)	I _n	L-N 20kA, N-E 5kA, L-E 5kA	
Max. discharge current(8/20)	I _{max}	L-N 40kA, N-E 10kA, L-E 10kA	
Voltage impulse (1.2/50us)	U _{oc}	20kV	
Total surge capacity per Line	I _{total}	100kA (8/20us)	
Voltage protection level	L-N @6kV/3kA	VPR	<1.0kV
	L/N-PE@6kV/3kA	VPR	<1.2kV
	L-N @I _n	U _p	<1.2kV
	L/N-PE@I _n	I _p	<1.4kV
Residual Current	I _{PE}	<1mA	
Voltage drop:		< 2V at rated load current	
Temporary overvoltage TOV —Withstand mode	U _{tov}	400V/5s	

POWER SUPPLY

Response time	Ta	<5ns	
Filter attenuation	dB	>40dB @ 1MHz	
Recommended external over current protection in series		10A Fuse or CB	16A Fuse or CB
Protect Status Indication		2 part display, Power OK, Protection fault	
Connecting cable		IEC320 10A input x 1, IEC320 10A output x 1.	IEC320 16A input x 1, IEC320 16A output x 1.
Environment		Temperature Range: - 10°C ~ +60°C Humidity: ≤95% Altitude: ≤2000m	
Mounting		Portable	
Location Category		Indoor	
Degree of protection		IP20	
Dimension		152mm (L) x 133mm (W) x 48mm (H) approx	
Weight		0.8kg approx	
Approvals, Certification		CE	