

XX Pol Panel Stadium Antenna 3300-3800MHz 50° 10dBi 0° FET**Electrical Specifications**

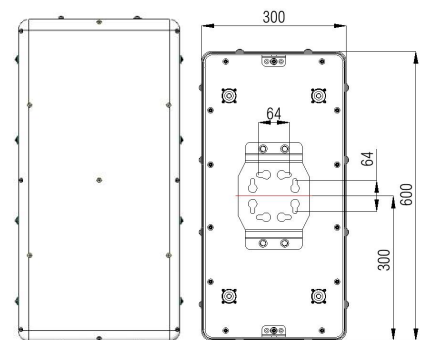
| | |
|--|-------------------|
| Frequency Range (MHz): | 3300-3800 |
| Gain (dBi): | 9.5±0.5 |
| Return Loss (dB): | >14 (VSWR<1.5) |
| Polarization: | ±45° |
| 3dB($\varphi=0^\circ$)Horizontal Beamwidth (°): | 45±5 |
| 20dB($\varphi=0^\circ$)Horizontal Beamwidth (°): | 80±12 |
| 3dB($\varphi=90^\circ$)Vertical Beamwidth (°): | 45±5 |
| 20dB($\varphi=90^\circ$)Vertical Beamwidth (°): | 80±12 |
| Horizontal Sidelobe Suppression (dB): | 18 (Typ.) |
| Vertical Sidelobe Suppression (dB): | 18 (Typ.) |
| Electrical Downtilt (°): | 0 Fixed |
| Front to Back Ratio at 180±30° (dB): | 25 |
| CPR at Boresight(dB): | 18 |
| Isolation Port to Port (dB): | 25 |
| Intermodulation IM3 (dBc): | <-150 (2×43 dBm) |
| Max. Power Per Port (W): | 100 |
| Impedance (ohm): | 50 |
| Lightning Protection: | DC Grounded |
| Connector Type: | 4×7/16 DIN Female |

BASTA Electrical Specifications

| | |
|---|-----------|
| Frequency Range(MHz): | 3300-3800 |
| Average Gain by all Beam Tilts (dBi): | 9.25 |
| Gain by all Beam Tilts Tolerance(dB): | ±0.27 |
| Average Gain by Beam Tilt (dBi): | 0° 9.25 |
| Horizontal Beamwidth Tolerance(°): | ±6 |
| Vertical Beamwidth Tolerance(°): | ±6 |
| USLS beampeak to 20° above beampeak(dB): | 22.18 |
| Front to back Total Power at 180° ± 30°(dB) | 34.89 |
| CPR at Boresight(dB): | 22.21 |

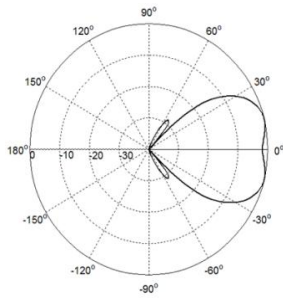
Mechanical Data

| | |
|----------------------------------|---|
| Antenna Dimensions (mm): | 600×300×110 |
| Packing Dimensions (mm): | 902×367×175 |
| Antenna Net Weight/Bracket (kg): | 8/4 |
| Antenna Gross Weight (kg): | 13 |
| Radome Material: | ASA (Pantone cool gray 5C) , UV Resistant |
| Pipe OD (mm): | 70-114 |
| Mounting Kits (Included): | BA.K.04.00069041, Horizontal adjustable ±40° Vertical adjustable ±25° |

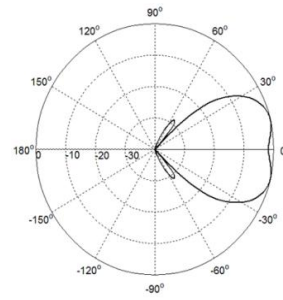
**Environmental Ratings**

| | |
|---------------------------|-------------------------------------|
| Humidity: | 95%RH@+30°C |
| Temperature (°C): | -40~+60 |
| Wind Load @150 km/h (N): | Frontal/Lateral/Rearside:176/65/220 |
| Max. Wind velocity(km/h): | 200 |

Typical Patterns



Azimuth



Elevation

Correlation Table

| Frequency range | Array | Connector |
|-----------------|-------|-----------|
| 3300-3800MHz | P1 | 1-2 |
| 3300-3800MHz | P2 | 3-4 |

