

**X Pol Panel Antenna 698-960MHz 90° 15.5dBi 0-10°Replaceable RET****Electrical Specifications**

Frequency Range (MHz):	698-960(R1)		
	698-862	862-894	894-960
Gain (dBi):	14.4±0.5	15.0±0.5	15.3±0.5
Return Loss (dB):	>14(VSWR<1.5)		
Polarization:	±45°		
Horizontal 3dB Beamwidth (°):	88	85	83
Vertical 3dB Beamwidth (°):	8.5	7.5	7.0
Electrical Downtilt (°):	0-10 Independently Continuously Adjustable		
RET Type:	Cascade SRET, AISG 2.0, Upgradeable		
1 <sup>st</sup> Upper Sidelobe Suppression (dB):	15	15	15
Front to Back Ratio (dB):	22	23	24
Isolation Port to Port (dB):	>28		
Max. Power Per Port (W):	250		
Intermodulation IM3 (dBC):	<-150 (2×43 dBm)		
Impedance (ohm):	50		
Lightning Protection:	DC Grounded		
Connector Type:	2×4.3-10 Female		

**BASTA Electrical Specification**

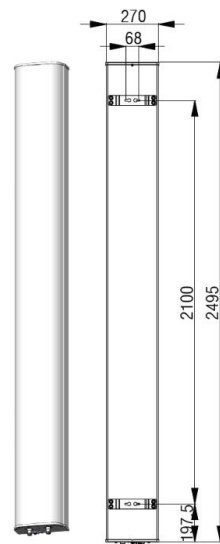
Frequency Range(MHz):	698-960(R1)		
	698-806	806-880	880-960
Average Gain by all Beam Tilts (dBi):	14.8	15	15.2
Gain by all Beam Tilts Tolerance(dB):	±0.4	±0.3	±0.3
Average Gain by Beam Tilt (dBi):	0°   14.8	0°   15.0	0°   15.3
	5°   14.9	5°   15.0	5°   15.4
	10°   14.7	10°   14.9	10°   15.0
Horizontal Beamwidth Tolerance(°):	±1.2	±0.8	±1
Vertical Beamwidth Tolerance(°):	±0.7	±0.5	±0.6
USLS to 20° above beampeak(dB):	17.7	15.3	16.6
Front to back Ratio at 180° ± 30°(dB)	22.2	23.8	24.3
CPR at Boresight(dB):	20.6	18.3	16.4

**Mechanical Data**

Antenna Dimensions (mm):	2495×270×149
Packing Dimensions (mm):	2765×355×240
Antenna Net Weight/Bracket (kg):	19/5.9
Antenna Gross Weight (kg):	29
Radome Material:	Fiberglass
Pipe OD (mm):	50-115
Mounting Kits (Included):	BA.K.04.00069091, Adjustable Downtilt 0-10°

**Environmental Ratings**

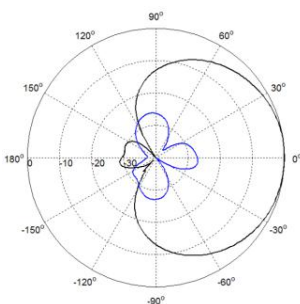
Humidity:	95%RH@+30°C
Temperature (°C):	-40~+70
Wind Load @150 km/h (N):	Frontal/Lateral/Rearside: 589/261/1096
Max. Wind velocity(km/h):	150



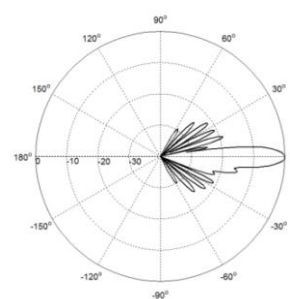
**Internal RET Specifications**

RET Type:	Replaceable RET
RET protocol:	AISG2.0 /3GPP
Input voltage range(V):	10-30 DC
Power consumption(W):	< 5 (motor activated, single RET) < 1 (stand by, single RET), < 1.5 (stand by, 12V)
Adjustment time (full range) (s):	< 120 (typically, depending on antenna type)
RET connector:	1 pair of AISG 5 pin male & female
Pin assignment according AISG:	8 pin circular connector conforming to IEC 60130-9 - Ed. 3.0
Lightning protection (kA):	5 (8/20 μs Differential mode), 8 (8/20 μs Common mode)

**Typical Patterns**

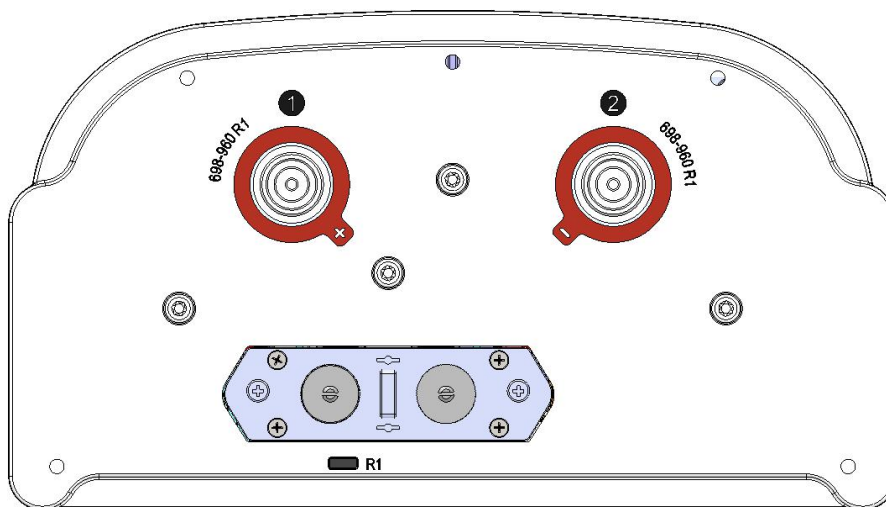


Azimuth(Low Band)



Elevation(Low Band)

**Bottom View**



**Correlation Table**

Frequency range	Array	Connector	RET S/N
698– 960 MHz	R1	1-2	BRxxx.....1R1

