

**XXXX Pol Panel Antenna 698-960/3×1710-2690MHz 65°/65° 16.5/18dBi 2°-12°/0°-10° Replaceable RET****Electrical Specifications**

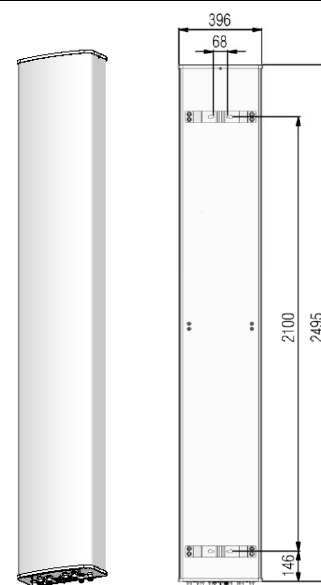
Frequency Range (MHz):	698-960(R1)			1710-2690(Y1,Y2,Y3)		
	698-806	806-880	880-960	1710-2170	2300-2490	2490-2690
Gain (dBi):	15.5±0.5	16.0±0.5	16.5±0.5	16.8±0.5	17.5±0.5	17.8±0.5
Return Loss (dB):	>14 (VSWR<1.5)					
Polarization:	±45°					
Horizontal 3dB Beamwidth (°):	65	62	60	67	60	58
Vertical 3dB Beamwidth (°):	9.5	8.5	7.5	6.0	4.8	4.3
Electrical Downtilt (°):	2-12 Independently Continuously Adjustable			0-10 Independently Continuously Adjustable		
RET Type:	Cascade SRET, AISG 2.0, Upgradeable					
1 <sup>st</sup> Upper Sidelobe Suppression (dB):	15	15	15	15	15	15
Front to Back Ratio 180±30°(dB):	22	24	24	25	25	25
Cross Polar Ratio 0° (dB):	15	15	15	15	15	15
Intraband Isolation (dB):	>25			>25		
Interband Isolation (dB):	>28					
Max. Power Per Port (W):	250			200		
Intermodulation IM3 (dBc):	<-150 (2×43dBm)					
Impedance (ohm):	50					
Lightning Protection:	DC Grounded					
Connector Type:	8×4.3-10 Female					

**BASTA Electrical Specification**

Frequency Range(MHz):	698-960(R1)			1710-2690(Y1,Y3)			1710-2690(Y2)		
	698-806	806-880	880-960	1710-2170	2300-2490	2490-2690	1710-2170	2300-2490	2490-2690
Average Gain by all Beam Tilts (dBi):	15.4	16.2	16.5	16.8	17.2	17.3	16.9	17.2	17.2
Gain by all Beam Tilts Tolerance(dB):	±0.7	±0.3	±0.5	±0.6	±0.5	±0.5	±0.6	±0.5	±0.6
Average Gain by Beam Tilt (dBi):	15.5	16.3	16.7	16.7	17.2	17.3	17.1	17.3	17.0
	15.4	16.3	16.7	17.1	17.4	17.6	17.1	17.4	17.5
	15.3	16.0	16.2	16.6	16.9	17.0	16.6	16.8	17.1
Horizontal Beamwidth Tolerance(°):	±2.9	±1.5	±1.9	±5.0	±4.2	±4.9	±4.0	±5.6	±4.2
Vertical Beamwidth Tolerance(°):	±0.8	±0.3	±0.7	±0.7	±0.3	±0.3	±0.7	±0.3	±0.3
USLS to 20° above beampeak(dB):	14.5	13.7	15.0	15.5	16.2	16.3	15.2	17.5	17.4
Front to back Ratio at 180° ± 30°(dB)	21.2	24.1	25.0	24.5	25.6	25.0	25.8	29.1	28.0
CPR at Boresight(dB):	19.2	26.2	24.1	15.6	15.8	16.0	17.2	20.8	19.3

### Mechanical Data

Antenna Dimensions (mm):	2495×396×190
Packing Dimensions (mm):	2765×485×285
Antenna Net Weight/Bracket (kg):	34 / 5.9
Antenna Gross Weight (kg):	47
Radome Material:	Fiberglass
Pipe OD (mm):	50-115
Mounting Kits (Included):	BA.K.04.00069091, Adjustable Downtilt 0°-10°



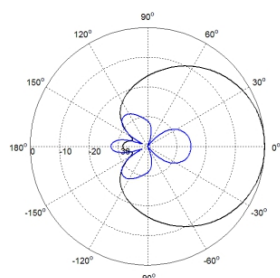
### Environmental Ratings

Humidity:	95%RH@+30°C
Temperature (°C):	-40~+70
Wind Load @150 km/h (N):	Frontal/Lateral/Rearside: 1125/327/1480
Max. Wind velocity(km/h):	200

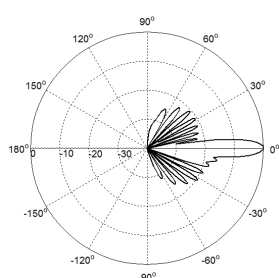
### Internal RET Specifications

RET type:	Replaceable RET
RET protocol:	AISG2.0 /3GPP
Input voltage range(V):	10-30 DC
Power consumption(W):	< 5 (motor activated, single RET) < 1 (stand by, single RET), < 1.5 (stand by, 12V)
Adjustment time (full range) (s):	< 120 (typically, depending on antenna type)
RET connector:	1 pair of AISG 5 pin male & female
Pin assignment according AISG:	8 pin circular connector conforming to IEC 60130-9 - Ed. 3.0
Lightning protection (kA):	5 (8/20 μs Differential mode), 8 (8/20 μs Common mode)

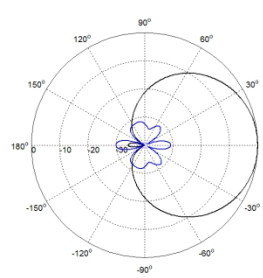
### Typical Patterns



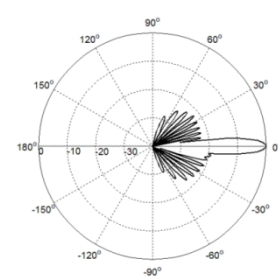
Azimuth(Low band)



Elevation(Low band)

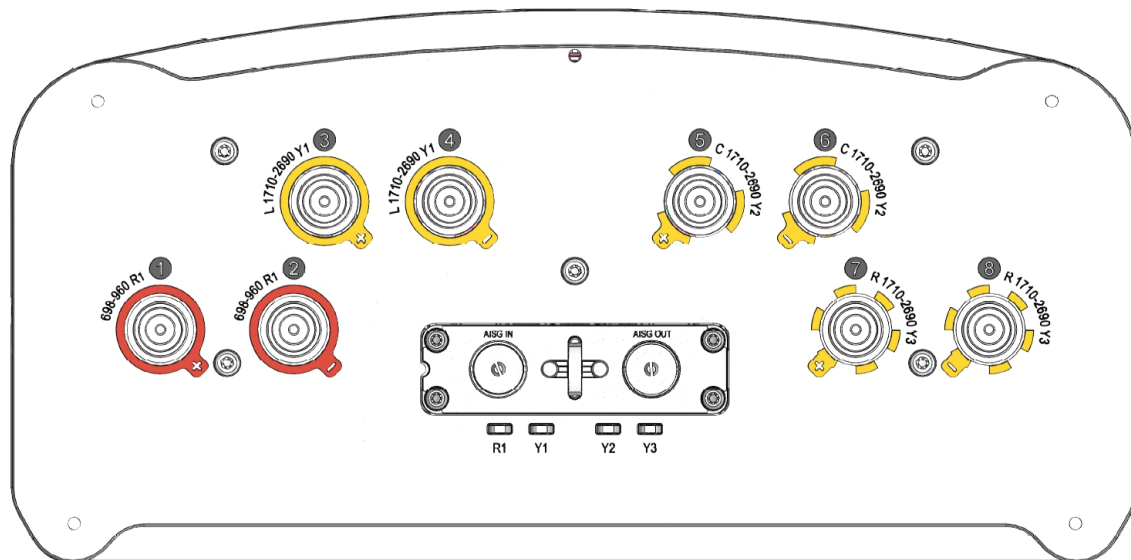


Azimuth(High band)



Elevation(High band)

Bottom View



Correlation Table

Frequency range	Array	Connector	RET S/N
698-960MHz	R1	1-2	BRxxx.....1R1
1710-2690MHz	Y1	3-4	BRxxx.....2Y1
1710-2690MHz	Y2	5-6	BRxxx.....3Y2
1710-2690MHz	Y3	7-8	BRxxx.....4Y3

