

XXXX Pol Panel Antenna 698-960/3×1710-2690MHz 65°/65 16/18dBi 0°-10° Replaceable RET**Electrical Specifications**

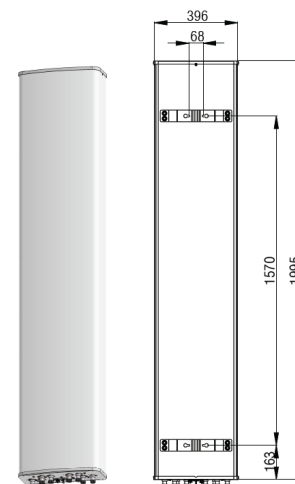
Frequency Range (MHz):	698-960(R1)			1710-2690(Y1,Y2,Y3)		
	698-806	806-880	880-960	1710-2170	2300-2490	2490-2690
Gain (dBi):	14.6±0.5	15.3±0.5	15.6±0.5	16.8±0.5	17.5±0.5	17.8±0.5
Return Loss (dB):	>14 (VSWR<1.5)					
Polarization:	±45°					
Horizontal 3dB Beamwidth (°):	65	62	60	67	60	58
Vertical 3dB Beamwidth (°):	11.0	10.0	9.3	6.0	4.8	4.3
Electrical Downtilt (°):	0-10 Independently Continuously Adjustable					
RET Type:	Cascade SRET, AISG 2.0, Upgradeable					
1 st Upper Sidelobe Suppression (dB):	15	15	15	15	15	15
Front to Back Ratio 180±30°(dB):	22	23	24	25	25	25
Cross Polar Ratio 0° (dB):	15	15	15	15	15	15
Intraband Isolation (dB):	>25			>25		
Interband Isolation (dB):	>28					
Max. Power Per Port (W):	250			200		
Intermodulation IM3 (dBc):	<-150 (2×43dBm)					
Impedance (ohm):	50					
Lightning Protection:	DC Grounded					
Connector Type:	8×4.3-10 Female					

BASTA Electrical Specification

Frequency Range(MHz):	698-960(R1)			1710-2690(Y1,Y3)			1710-2690(Y2)		
	698 -806	806 -880	880 -960	1710 -2170	2300 -2490	2490 -2690	1710 -2170	2300 -2490	2490 -2690
Average Gain by all Beam Tilts (dBi):	14.4	15.2	15.4	16.8	17.2	17.4	16.7	17.1	17.3
Gain by all Beam Tilts Tolerance(dB):	±0.5	±0.6	±0.6	±0.7	±0.7	±0.6	±0.5	±0.5	±0.4
Average Gain by Beam Tilt (dBi):	14.6	15.3	15.5	16.9	17.3	17.5	16.8	17.2	17.2
	14.4	15.3	15.6	17.0	17.4	17.6	16.8	17.3	17.6
	14.2	15.0	15.2	16.5	16.8	17.0	16.6	16.8	17.0
Horizontal Beamwidth Tolerance(°):	±1.5	±1.8	±1.4	±5.0	±4.2	±4.9	±2.8	±6.7	±5.1
Vertical Beamwidth Tolerance(°):	±1.2	±0.9	±1.0	±0.7	±0.4	±0.4	±0.4	±0.3	±0.4
USLS to 20° above beampeak(dB):	14.3	14.8	15.0	15.3	16.2	16.0	15.4	17.1	16.7
Front to back Ratio at 180° ± 30°(dB)	21.5	23.7	25.2	24.7	24.9	25.1	26.8	28.1	28.0
CPR at Boresight(dB):	28.4	23.4	26.3	15.3	16.0	16.3	17.2	20.8	19.3

Mechanical Data

Antenna Dimensions (mm):	1995×396×190
Packing Dimensions (mm):	2265×485×285
Antenna Net Weight/Bracket (kg):	28/5.9
Antenna Gross Weight (kg):	40
Radome Material:	Fiberglass
Pipe OD (mm):	50-115
Mounting Kits (Included):	BA.K.04.00069121, Adjustable Downtilt 0°-14°



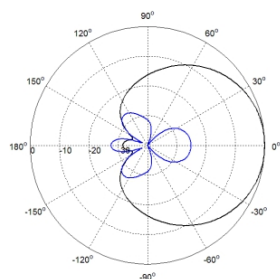
Environmental Ratings

Humidity:	95%RH@+30°C
Temperature (°C):	-40~+70
Wind Load @150 km/h (N):	Frontal/Lateral/Rearside: 891/252/1172
Max. Wind velocity(km/h):	200

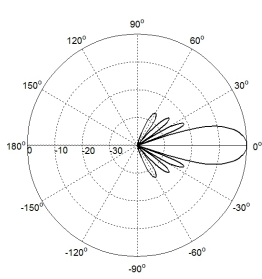
Internal RET Specifications

RET type:	Replaceable RET
RET protocol:	AISG2.0 /3GPP
Input voltage range(V):	10-30 DC
Power consumption(W):	< 5 (motor activated, single RET) < 1 (stand by, single RET), < 1.5 (stand by, 12V)
Adjustment time (full range) (s):	< 120 (typically, depending on antenna type)
RET connector:	1 pair of AISG 5 pin male & female
Pin assignment according AISG:	8 pin circular connector conforming to IEC 60130-9 - Ed. 3.0
Lightning protection (kA):	5 (8/20 μs Differential mode), 8 (8/20 μs Common mode)

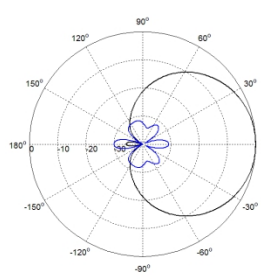
Typical Patterns



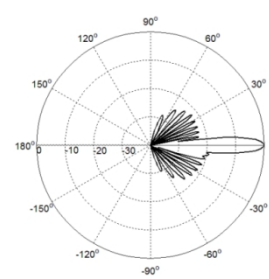
Azimuth(Low band)



Elevation(Low band)

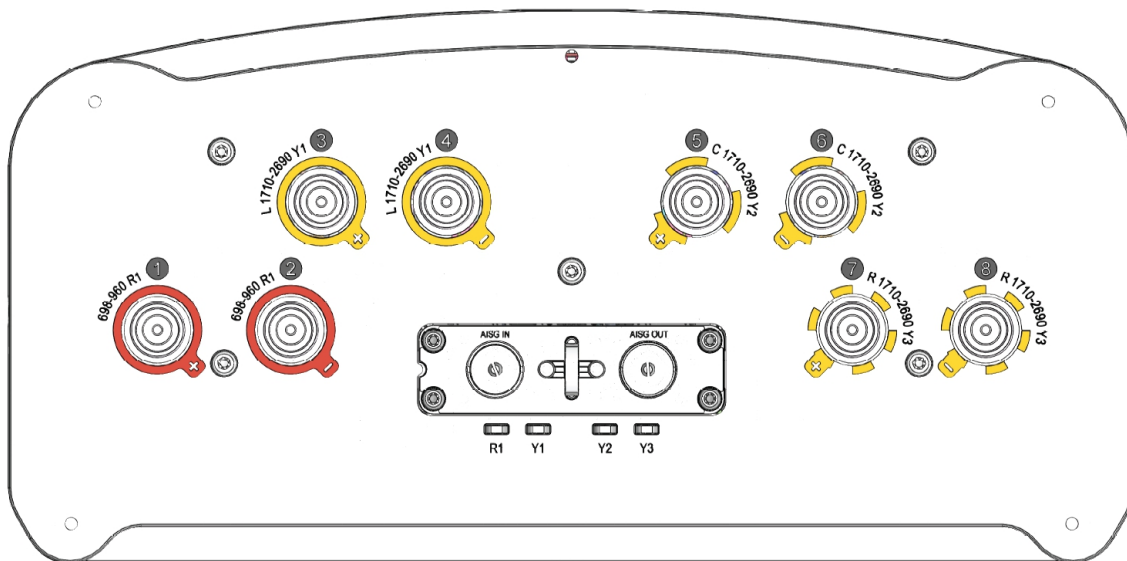


Azimuth(High band)



Elevation(High band)

Bottom View



Correlation Table

Frequency range	Array	Connector	RET S/N
698-960MHz	R1	1-2	BRxxx.....1R1
1710-2690MHz	Y1	3-4	BRxxx.....2Y1
1710-2690MHz	Y2	5-6	BRxxx.....3Y2
1710-2690MHz	Y3	7-8	BRxxx.....4Y3

