

XXX Pol Panel Antenna 694-960/2×1710-2690MHz 33°/33° 16/20dBi 2°-12°/2°-12° Replaceable RET**Electrical Specifications**

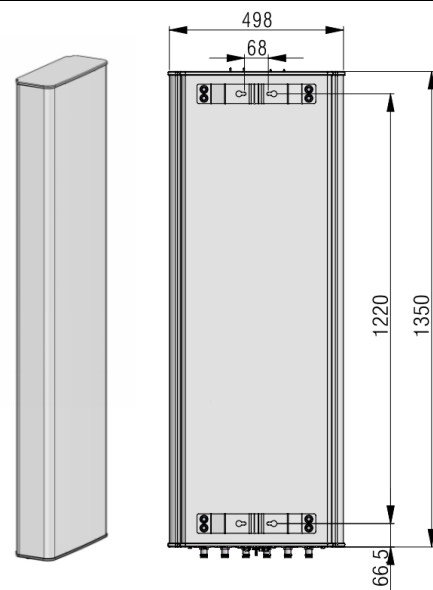
Frequency Range (MHz):	694-960(R1)			2×1710-2690(Y1,Y2)		
	694-806	806-880	880-960	1710-2170	2300-2490	2490-2690
Gain (dBi):	15.3±0.5	15.8±0.5	16.2±0.5	19.0±0.5	19.5±0.5	20.0±0.5
Return Loss (dB):	>14 (VSWR<1.5)					
Polarization:	±45°					
Horizontal 3dB Beamwidth (°):	39±5	34±4	30±3	38±5	33±4	28±3
Vertical 3dB Beamwidth (°):	17.0	15.3	13.0	6.7	5.5	5
1 st Upper Sidelobe Suppression(dB):	15	15	15	15	15	15
Electrical Downtilt (°):	2-12			2-12		
RET Type:	Cascade SRET, AISG 2.0, Upgradeable					
Front to Back Ratio (dB):	23	23	23	25	25	25
Cross Polar Ratio 0° (dB):	15	15	15	15	15	15
Cross Polar Ratio ±15° (dB):	>10			>10		
Intraband Isolation (dB):	>25			25		
Interband Isolation (dB):	>28					
Max. Power Per Port (W):	250			200		
Intermodulation IM3 (dBc):	<-150 (2×43 dBm)					
Impedance (ohm):	50					
Lightning Protection:	DC Grounded					
Connector Type:	6×4.3-10 Female					

BASTA Electrical Specification

Frequency Range(MHz):	694-960(R1)			2×1710-2690(Y1,Y2)		
	694-806	806-880	880-960	1710-2170	2300-2490	2490-269
Average Gain by all Beam Tilts (dBi):	15.3	15.8	16.2	19.0	19.5	20.0
Gain by all Beam Tilts Tolerance(dB):	±0.6	±0.5	±0.5	±0.5	±0.5	±0.5
Average Gain by Beam Tilt (dBi):	2° 15.4	2° 15.9	2° 16.4	2° 19.1	2° 19.6	2° 20.2
	7° 15.3	7° 15.8	7° 16.2	7° 19.0	7° 19.4	7° 20.0
	12° 15.1	12° 15.7	12° 16.0	12° 18.8	12° 19.2	12° 19.8
Horizontal Beamwidth Tolerance(°):	±4	±3	±3	±3.5	±2.8	±2.5
Vertical Beamwidth Tolerance(°):	±2.0	±1.8	±1.5	±1.5	±1.3	±1.2
USLS to 20° above beampeak(dB):	15.7	16.7	15.8	16.2	16.0	15.7
Front to back Ratio at 180° ± 30°(dB)	23.8	25.2	25.8	25.3	25.6	26.5
CPR at Boresight(dB):	15.8	16.2	15.6	16.2	16.5	15.8
CPR at Sector(dB):	11.6	11.5	11.2	11.9	11.2	10.5

Mechanical Data

Antenna Dimensions (mm):	1350×498×197
Packing Dimensions (mm):	1670×580×290
Antenna Net Weight /Bracket (kg):	26/5.7
Antenna Gross Weight (kg):	36
Radome Material:	Fiberglass
Pipe OD (mm):	70-114
Mounting Kits (Included):	BA.K.04.00011, Adjustable Downtilt 0°-14°



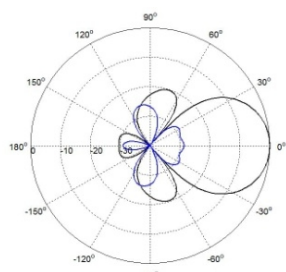
Environmental Ratings

Humidity:	95%RH@+30°C
Temperature (°C):	-40~+70
Wind Load @150 km/h (N):	Frontal/Lateral/Rearside:1160/226/1224
Max. Wind velocity(km/h):	200

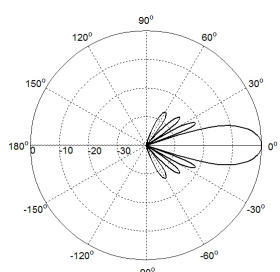
RET Specifications

RET Type:	Replaceable RET
RET protocol:	AISG 2.0 /3 GPP
Input voltage range(V):	10-30 DC
Power consumption(W):	< 5 (motor activated, single RET) < 1 (stand by, single RET), < 1.5 (stand by, 12V)
Adjustment time (full range) (s):	< 120 (typically, depending on antenna type)
RET connector:	1 pair of AISG 5 pin male & female
Pin assignment according AISG:	8 pin circular connector conforming to IEC 60130-9 - Ed. 3.0
Lightning protection (kA):	5 (8/20 μs Differential mode), 8 (8/20 μs Common mode)

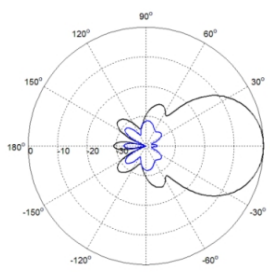
Typical Patterns



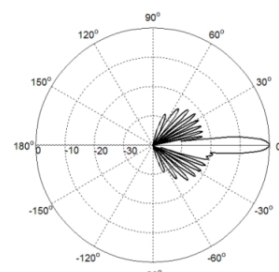
Azimuth(Low Band)



Elevation(Low Band)

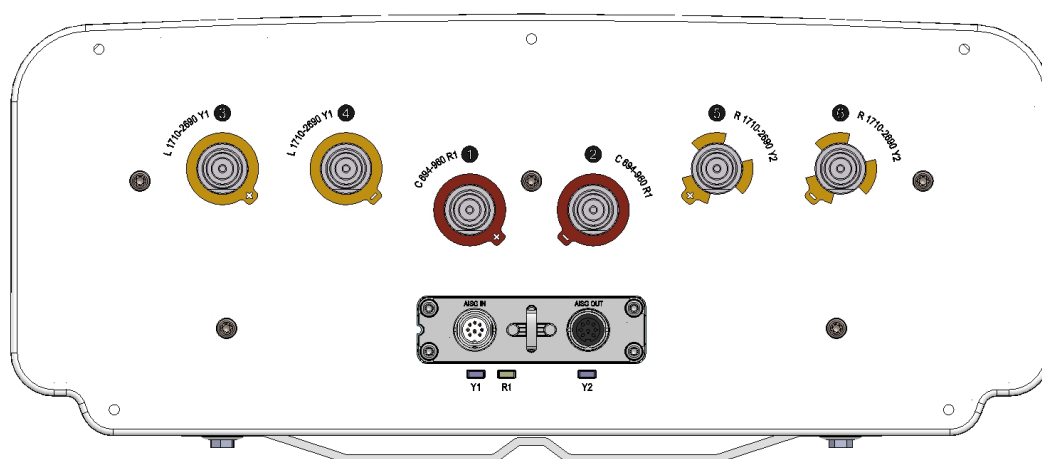


Azimuth(High Band)



Elevation(High Band)

Bottom View



Correlation Table

Frequency range	Array	Connector	RET S/N
694-960 MHz	R1	1-2	BRxxx.....1R1
1710-2690 MHz	Y1	3-4	BRxxx.....2Y1
1710-2690 MHz	Y2	5-6	BRxxx.....3Y2

